



IHO Stakeholders Forum
Session 4: GIS and WMS applications
for hydrographic data

Taunton, UK. Sep. 27, 2012

Hydrographic Data Beyond Charting

Rafael Ponce

Director Maritime Business Development



An interconnected world



Sharing

The end of an era...



...And the beginning of another



GIS and its relevance



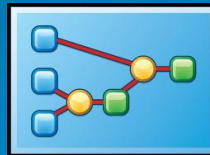
Today: how to share data?



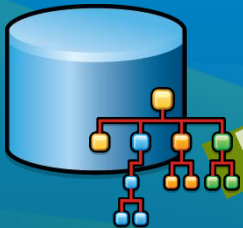
Facebook



Twitter



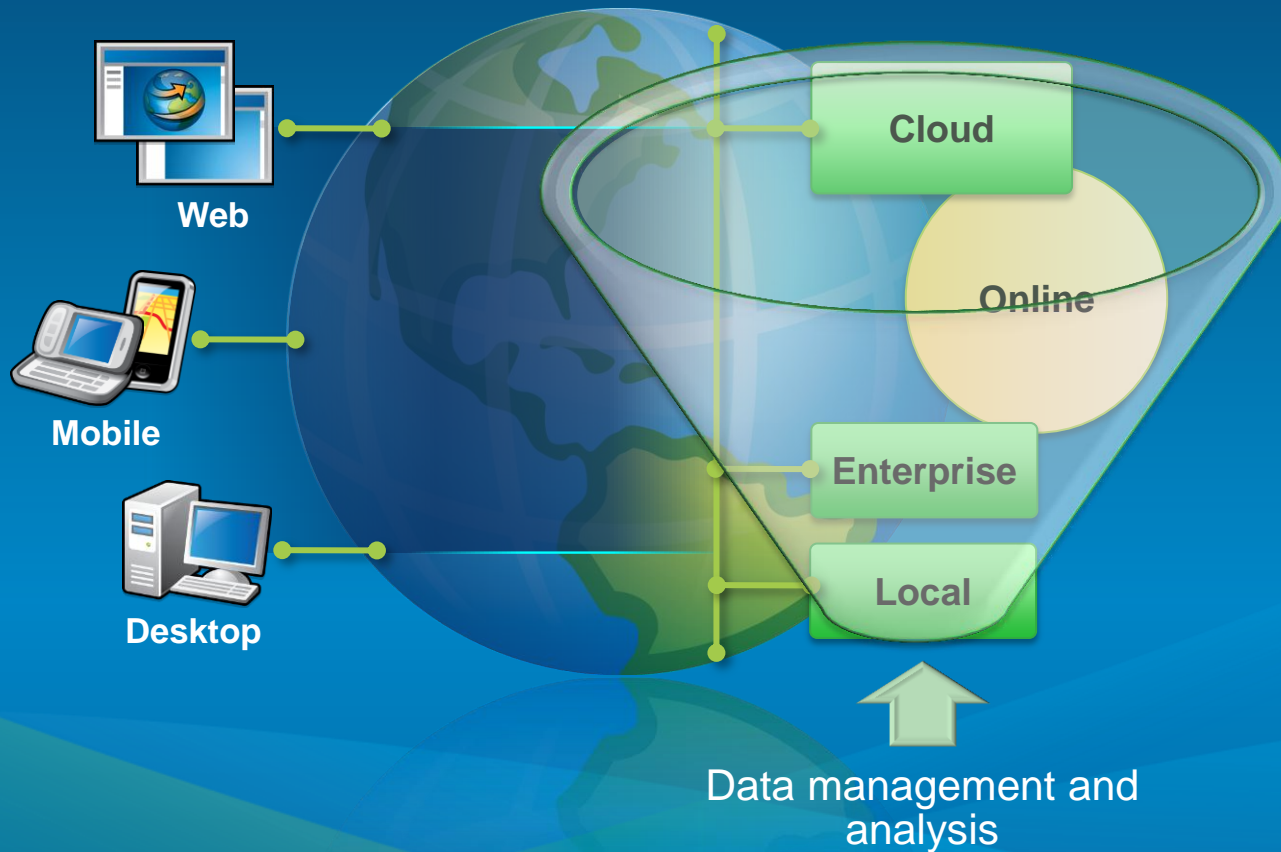
20 years ago: how to do geoprocessing?



30 years ago: how to model and store data?

GIS and its relevance

- Three main levels in a System for Geographic Information



Geospatial data usage

Common people

Decision and
Policy Makers

GIS
geeks



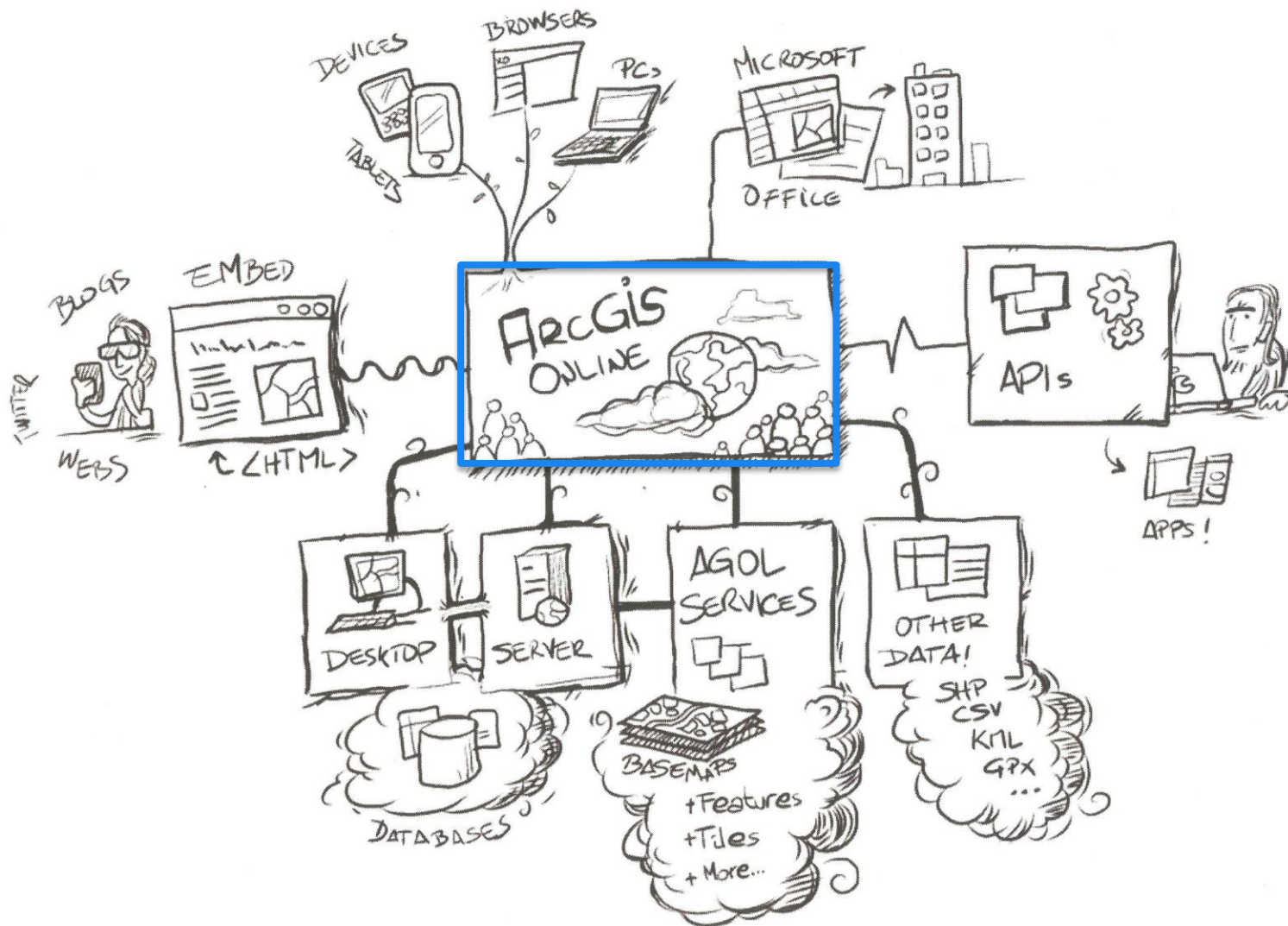
...Make accessible information to everybody.

Democratizing Geospatial information

- Making GIS Accessible to Everyone



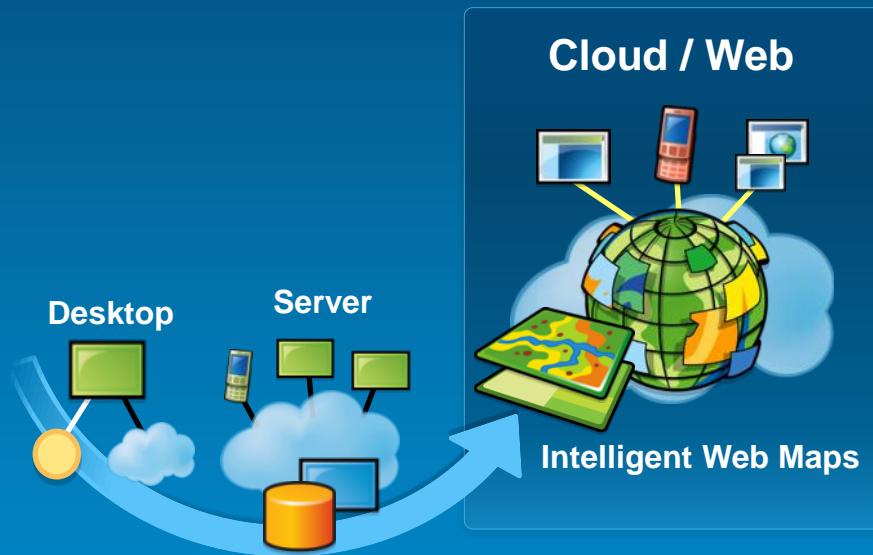
... Virtually Anywhere and on Any Device



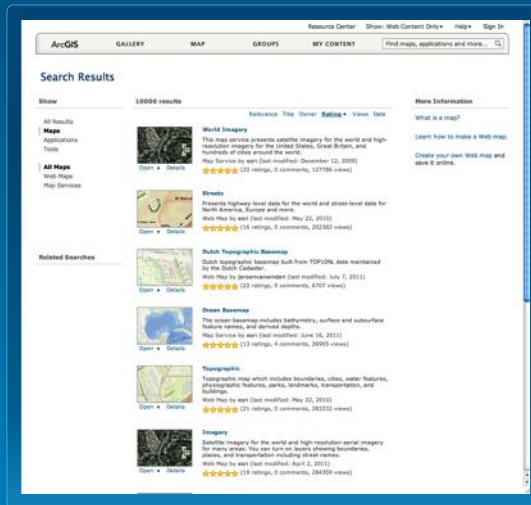
emphasizing the complete system - showing both geo-centric workflows and geo-enabled uses for everyone

ArcGIS Online is a New GIS Pattern

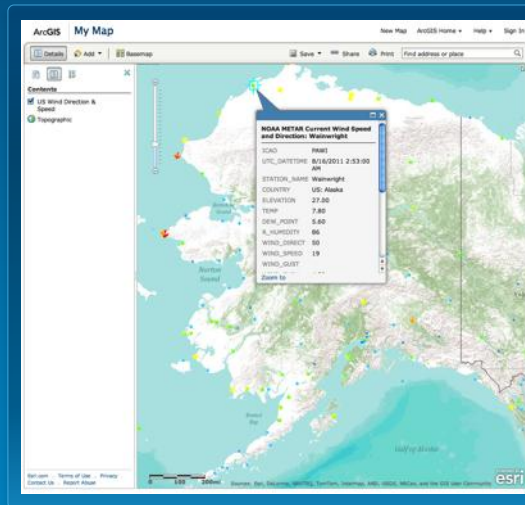
An open platform for maps and geographic information



ArcGIS Online Provides the Capabilities to . . .



**Organize and share
authoritative content**



**Make it easy for anyone
to make and use maps**

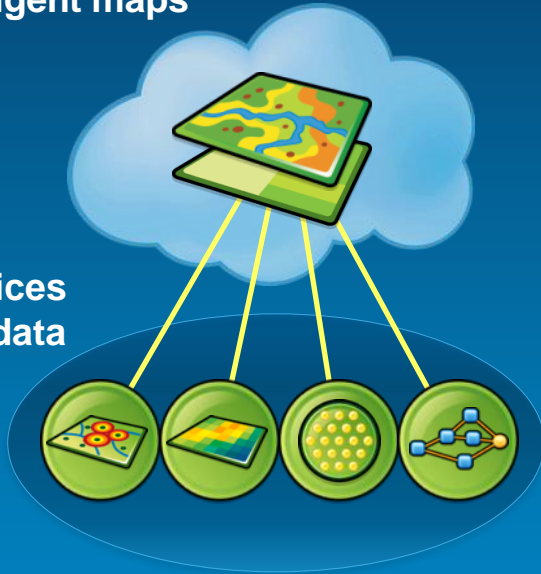


**Leverage enterprise
cloud computing
(hosted & on-premises)**

Easy to Create and Share Intelligent Web Maps

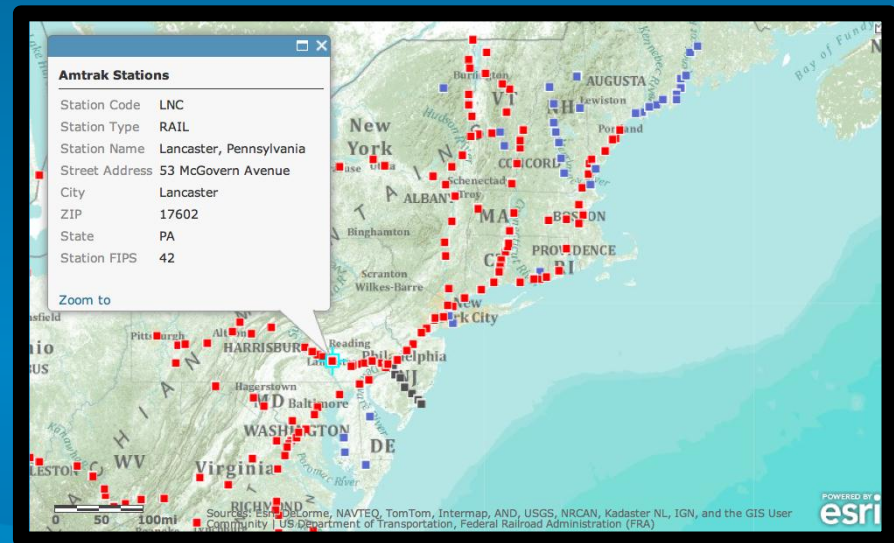
Intelligent maps

Services
and data



Supporting

- Display
- Feature Editing
- Pop-ups
- Time

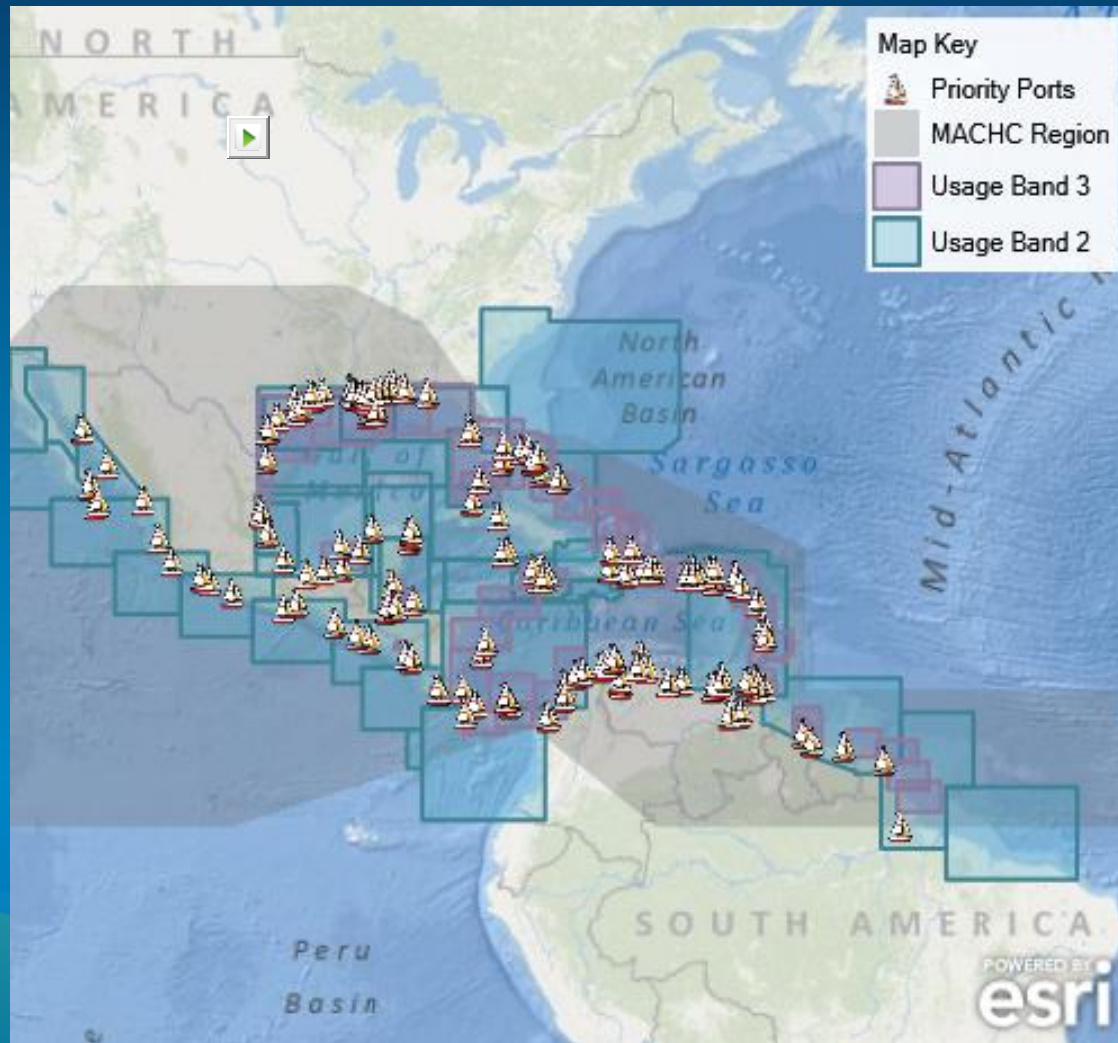


Intelligent Web Maps Can Be Used Everywhere

Enhancing access and collaboration



And everywhere

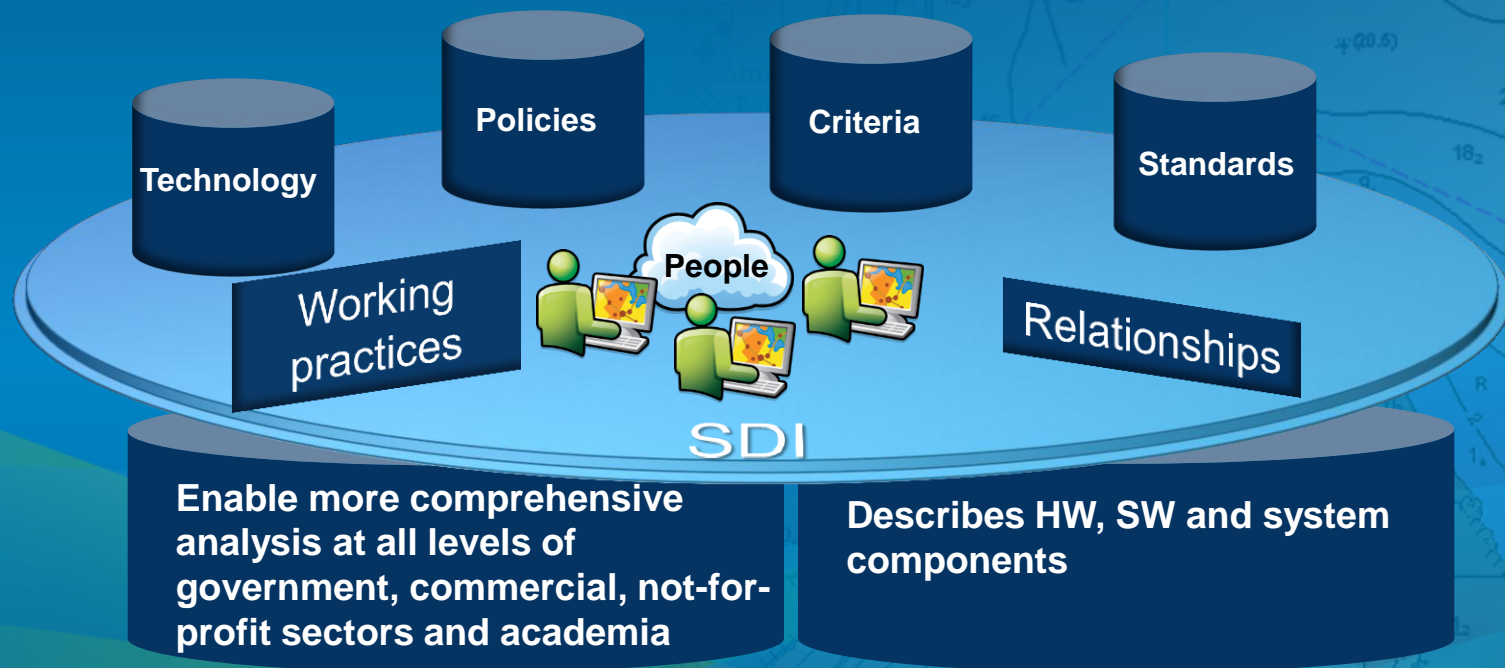


ArcGIS Online Demo



How to efficiently enable data sharing: SDI+Cloud

- SDI is “the relevant base collection of technologies, policies and institutional arrangements that facilitate the availability of and access to spatial data.” (Ref: Global Spatial Data Infrastructure Cookbook).



Some challenges for the Hydrographic community

- **Data sharing**
 - Traditional navigational data being demanded by “non-traditional” users
 - Re-define what is an ENC and what would be just S-57 data
 - S-63 is a huge obstacle
- **Identifying user groups’ needs**
 - Prioritization from the bottom up
 - Supporting sustainable economic development
 - Thinking beyond navigation
- **Integrating into National and Regional SDIs**
 - Adapting to existing standards and exchange formats
 - OGC compliant



esri

Thank you

rponce@esri.com