



Hydrographic Services and Standards Committee

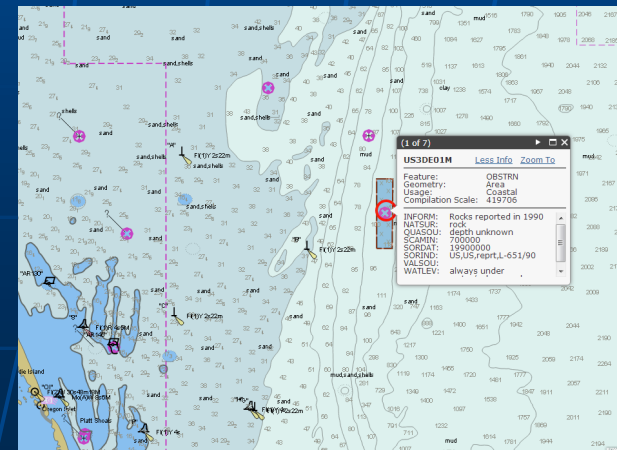
National Report of the United States (NOAA) on
Technical Matters

HSSC-5 Shanghai

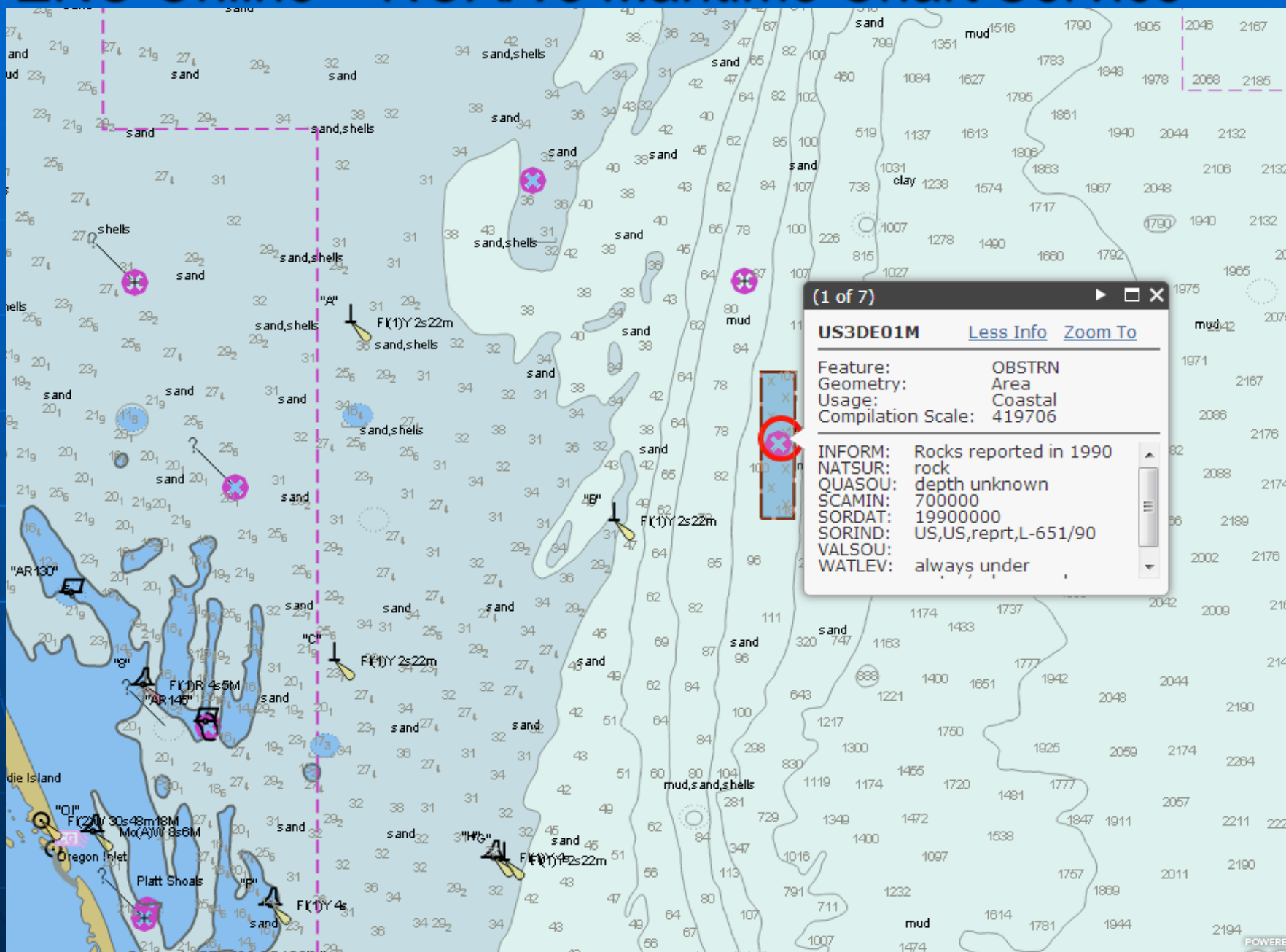
5-8 November 2013

ENC Online – NOAA's Maritime Chart Service

- ✦ Web-based visualization tool for NOAA ENC's
 - Uses S-52 ECDIS symbology
 - Applies SCAMIN
 - Query attribution
- ✦ Enables better quality control of NOAA ENC's
- ✦ Developed by ESRI

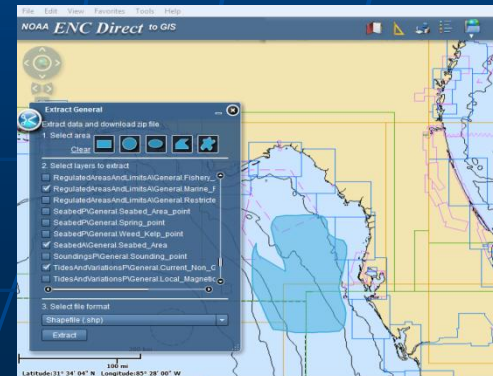


ENC Online – NOAA's Maritime Chart Service



ENC Direct to GIS

- ✦ November 2012 – NOAA launched an upgraded ENC Direct for user review
- ✦ Allows users to extract ENC data into formats suitable for GIS applications
- ✦ New features include:
 - Additional scale bands (4 to 6) keep each scale band seamless
 - Improved search functionality
 - Improved visualization to reduce clutter



ENC Direct to GIS

The screenshot displays the NOAA ENC Direct to GIS application. The main window shows a map of the Atlantic coast of the United States with various navigational data layers overlaid. A dialog box titled "Extract General" is open, allowing users to select data for extraction. The dialog box includes a "1. Select area" section with icons for different selection shapes (rectangle, circle, ellipse, polygon, and freehand), a "2. Select layers to extract" section with a list of layers and checkboxes, and a "3. Select file format" section with a dropdown menu set to "Shapefile (.shp)". An "Extract" button is located at the bottom of the dialog box. The map background shows a coastline with various colored overlays representing navigational data. A scale bar at the bottom indicates 100 miles, and the coordinates are Latitude: 31° 34' 04" N and Longitude: 85° 28' 00" W.

File Edit View Favorites Tools Help

NOAA *ENC Direct to GIS*

Extract General

Extract data and download zip file

1. Select area

Clear

2. Select layers to extract

- RegulatedAreasAndLimitsA\General.Fishery_
- RegulatedAreasAndLimitsA\General.Marine_F
- RegulatedAreasAndLimitsA\General.Restricte
- SeabedP\General.Seabed_Area_point
- SeabedP\General.Spring_point
- SeabedP\General.Weed_Kelp_point
- SeabedA\General.Seabed_Area
- SoundingsP\General.Sounding_point
- TidesAndVariationsP\General.Current_Non_C
- TidesAndVariationsP\General.Local_Magnetic

3. Select file format

Shapefile (.shp)

Extract

100 mi

Latitude: 31° 34' 04" N Longitude: 85° 28' 00" W

NOAA Privatizes Printing of Paper Charts

- ✦ As of April 13, 2014 the federal government will no longer print lithographic nautical charts
 - Declining demand for lithographic products
 - Increasing use of digital and electronic charts
- ✦ NOAA continues to support commercial paper Print on Demand charts to satisfy charting regulations
- ✦ Introduced full scale PDF nautical charts
 - Currently as a trial basis (22 Oct 2013 – 22 Jan 2014)

