



Hydrographic Services and Standards Committee

HSSC6 INF1

Australian experiences deriving paper charts from ENC

HSSC 6

11-14 November 2014, Viña del Mar, Chile

Background:

- ✦ Limited and shrinking resources
 - Pre-2012: 150 positions across SOLAS, military charting, METOC and administrative roles (excluding ships)
 - 2014: Currently 124 staff, shrinking further to under 100?
- ✦ Centralised database
 - Designed for parallel production of ENC and paper from common source data, but
 - obsolete, very slow using embedded software,
 - most production done using modern 'stand-alone' software using data extracted from the database to individual desktops until 2014,
 - very difficult to maintain alignment between ENC and paper charts.
- ✦ Bright idea: make one from the other !



External drivers:

✦ Pilotage

- Electronic pilotage works much better with larger scale ENC than equivalent paper chart (Cross-track monitoring on screen)

✦ Outsourced chart production

- Preparing packs of source data for outsourced work was difficult, but sending a complete S-57 dataset is easy

✦ Efficiency

- Forecast reductions are dramatic, need to act while there are still enough staff left to undertake development



System solution:

- ✦ Modernising via modular replacement
 - Customised Notices to Mariners / ENC update tracking tool (2013)
 - Caris HPD (installed 2014),
 - Caris BDB, Base Editor, Paper Chart Composer (all pilot programs for implementation in 2015)
- ✦ Which chart type comes first?
 - Paper first? Can only make one ENC from one paper chart (resulting does not suit optimum electronic pilotage)
 - ENC first? Can make several paper charts from one ENC (ENC can be optimised to suit electronic pilotage)



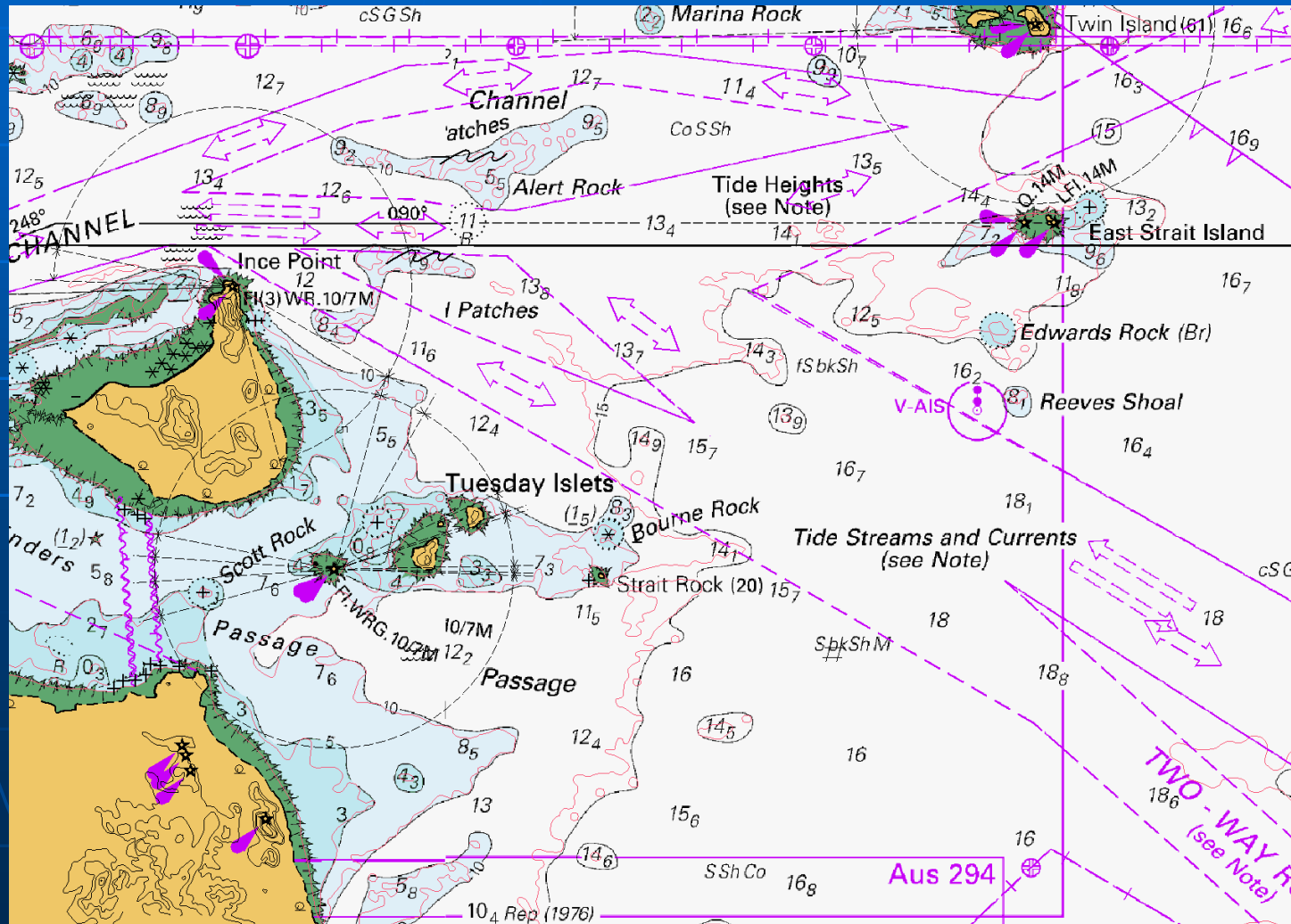
Challenges:

- ✦ Generalisation of contours and soundings
- ✦ ENC vs paper extent → Stitching together multiple ENC
- ✦ Existing methods of editing ENC within the AHS
 - we used to pass around the paper chart first for people to comment upon
 - highlighting errors was easy (draw an arrow on the paper chart)
 - How do you pass around an ENC for comment and mark up the features of concern?
- ✦ Gapping of linework?
- ✦ Chart notes?
- ✦ Geographic Names?
- ✦ Cultural !



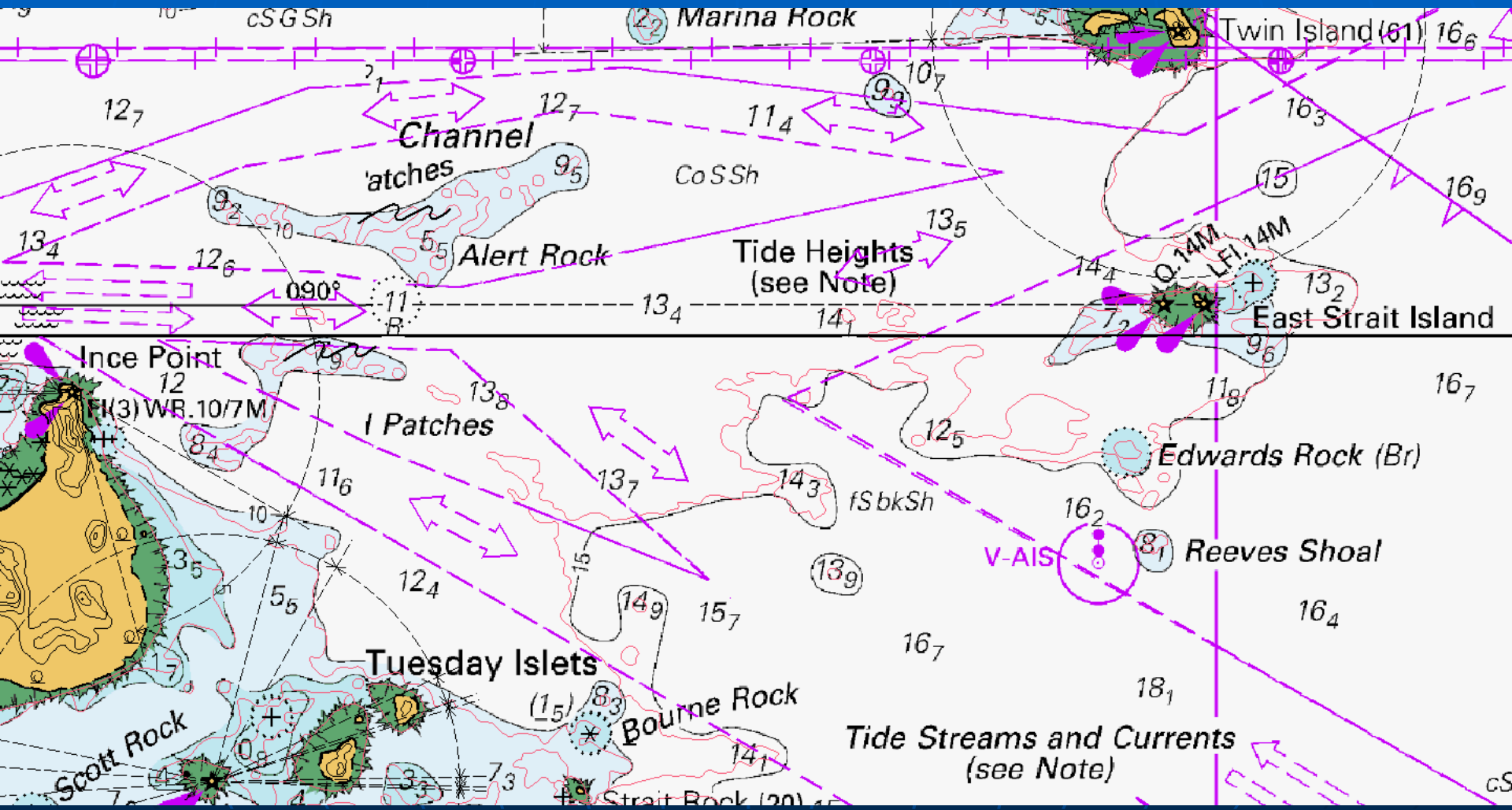
Contours:

- ✦ (Red = chart derived from ENC, black = existing paper edition)



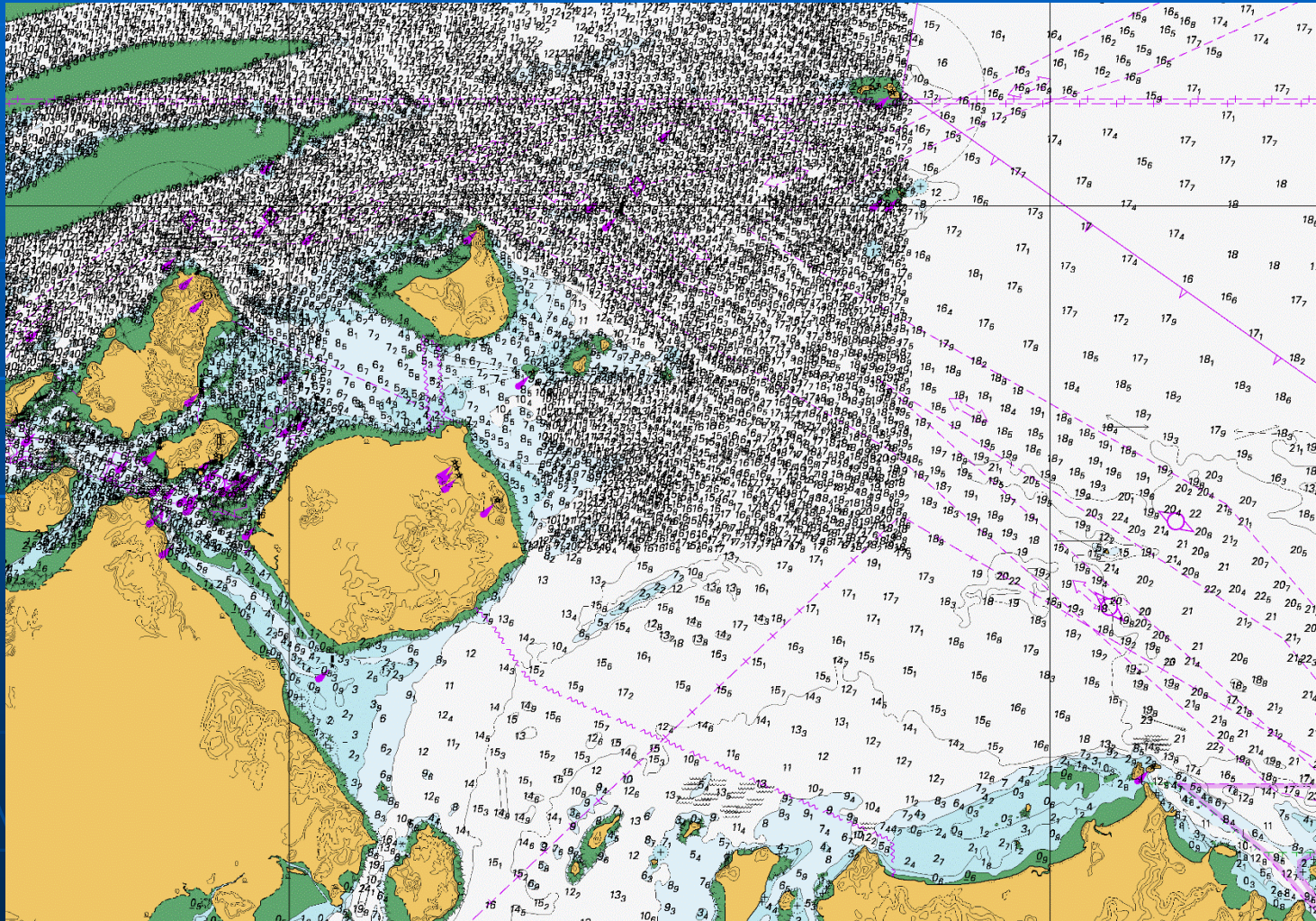
Contours:

- ✦ (Red = chart derived from ENC, black = existing paper edition)



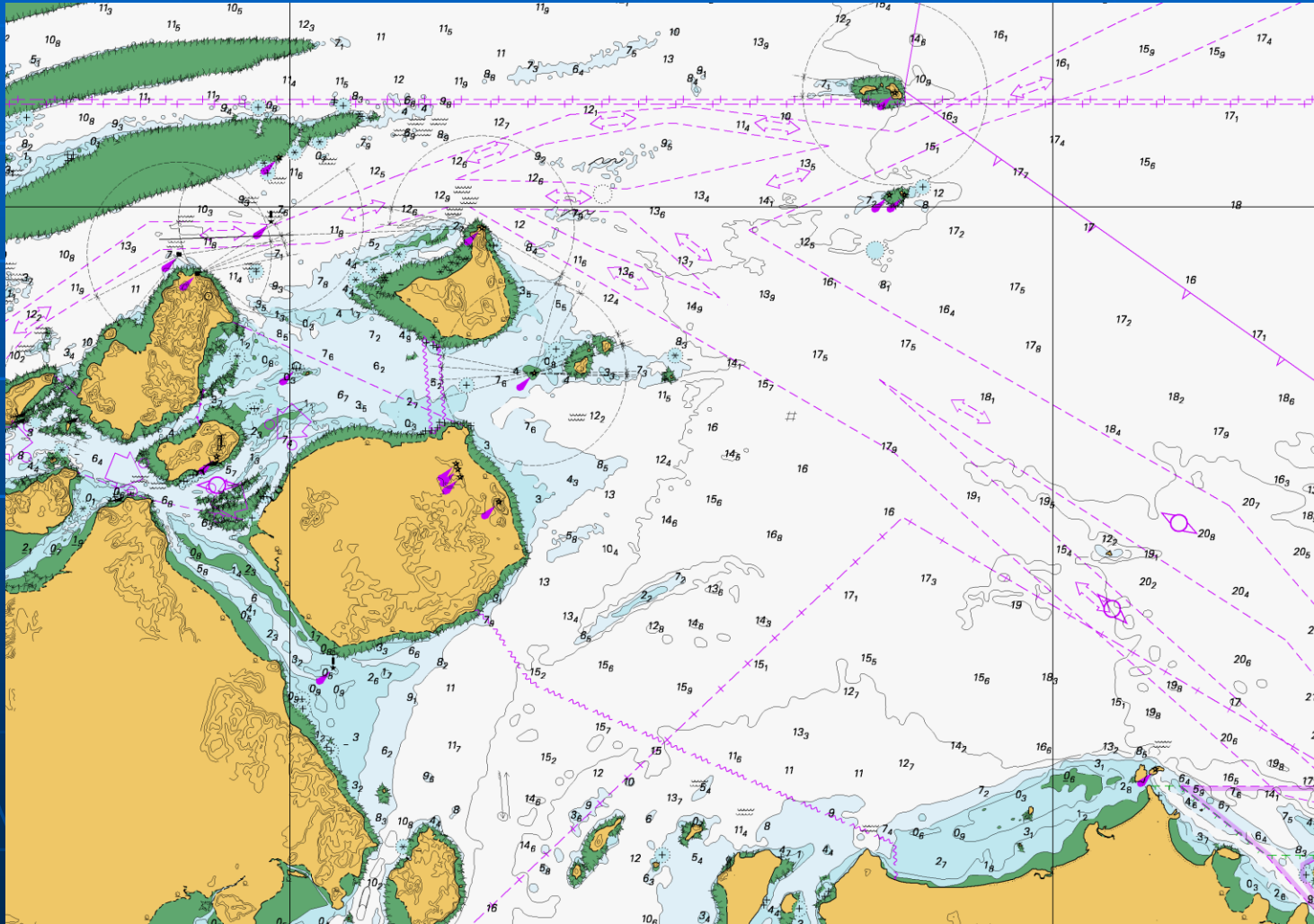
Soundings:

- ✦ Soundings from differing ENC compilation scales



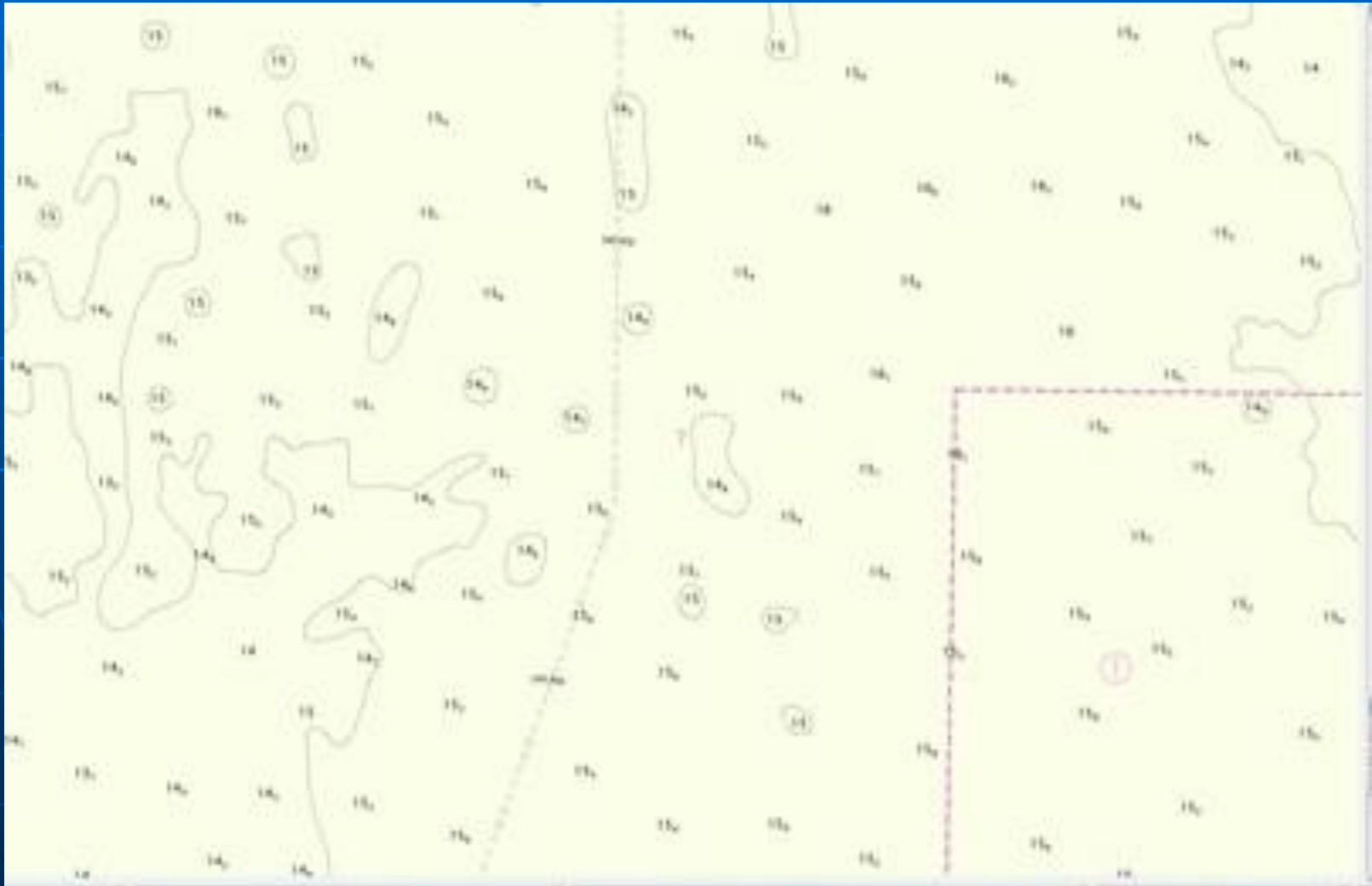
Soundings:

✦ Soundings selection → SCAMIN



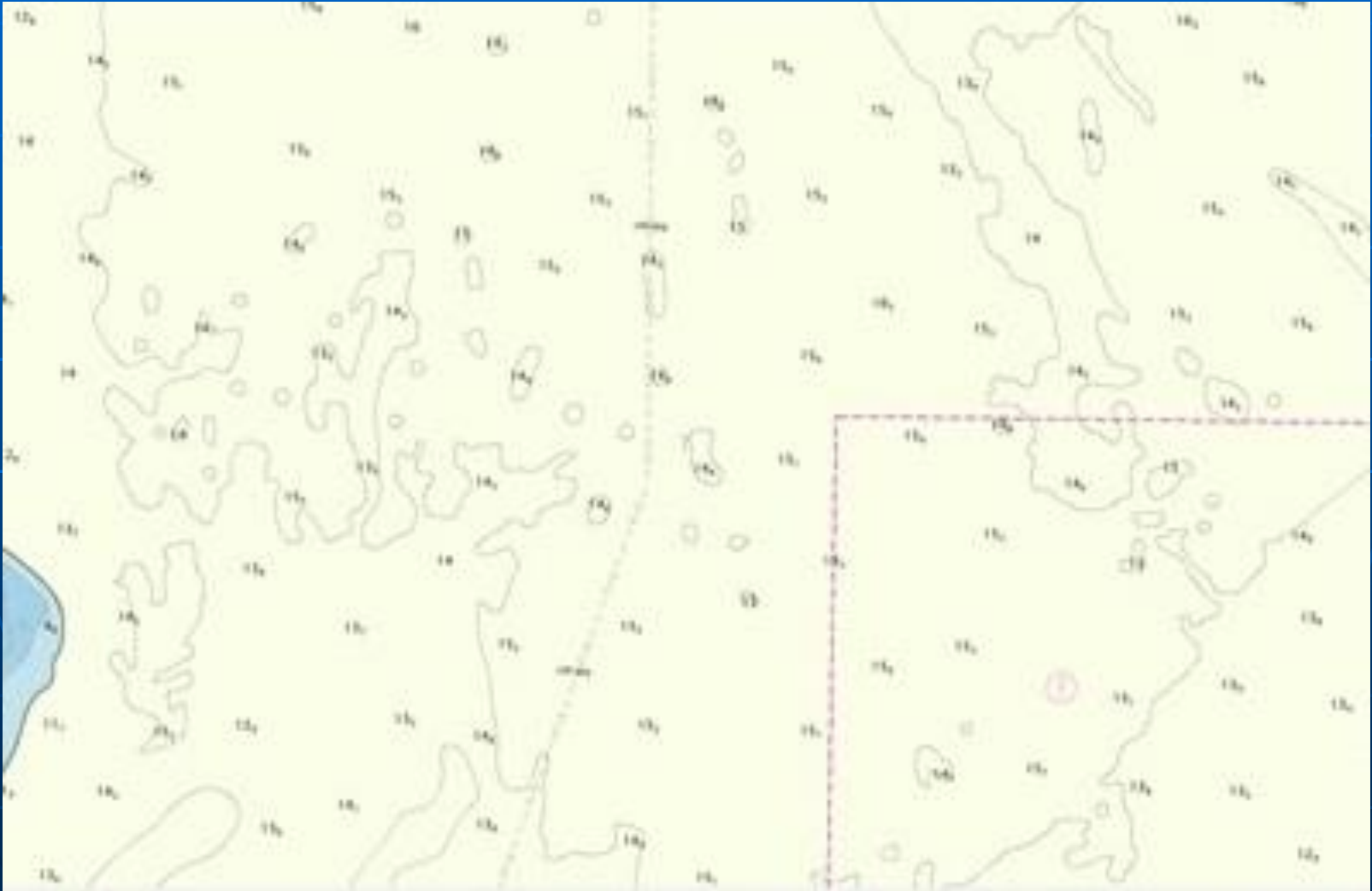
How far can this go?

✦ 1:12 000



How far can this go?

✦ 1:22 000 + SCAMIN



How far can this go?

✦ 1:45 000 + SCAMIN



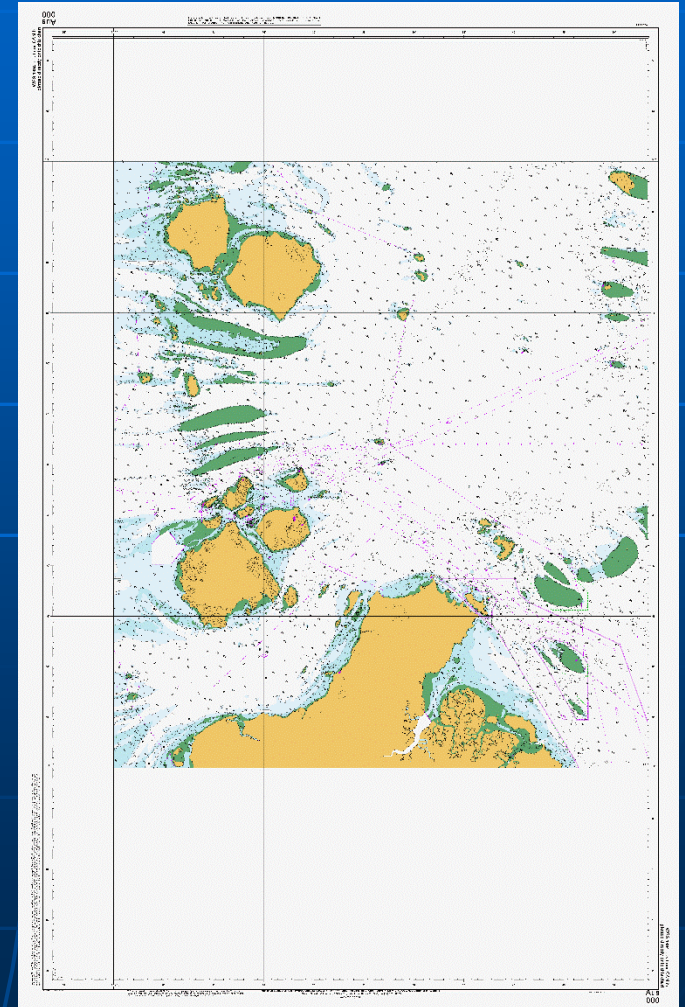
How far can this go?

✦ 1:90 000 + SCAMIN



Other Challenges:

- ✦ ENC vs paper extent → Stitching together multiple ENC
- ✦ Visualising the result



Action requested of HSSC

- ✦ **Note** the Information Paper and presentation

