



Hydrographic Services and Standards Committee

S-11 INT Chart Web-service and Management

(INToGIS Project)

ROK-IHB Joint Project

10-13 November 2015, Busan

Contents

- ✦ Introduction
- ✦ Status report & Timeline
- ✦ INT Chart Data Model
- ✦ INT Chart Catalogue Service
- ✦ INT Chart Web Manager
- ✦ Supporting Documentations
- ✦ Impacts



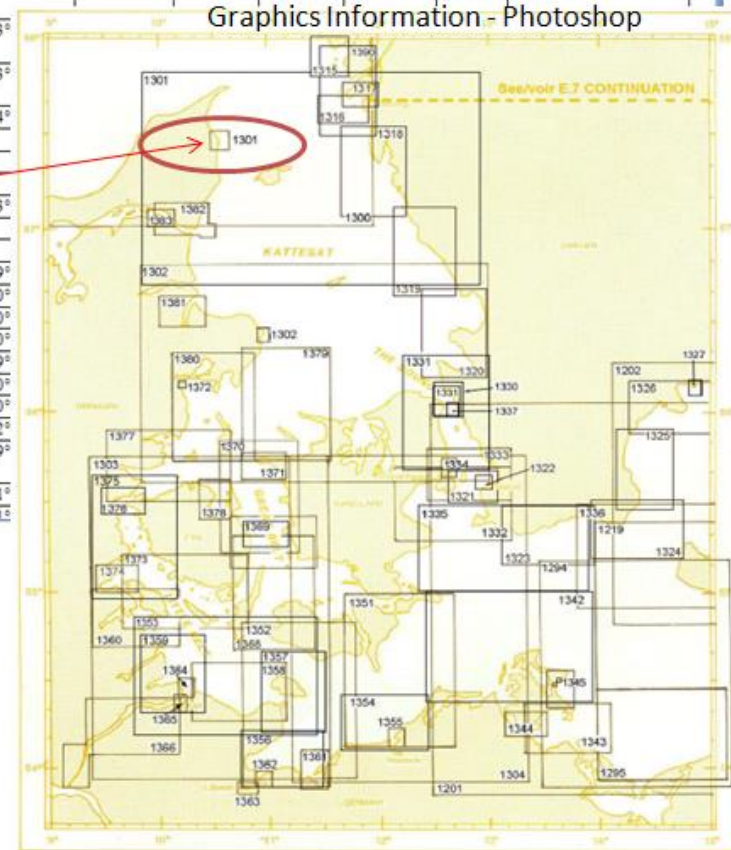
Introduction

KATTEGAT AND BALTIC ENTRANCES

KATTEGAT ET ENTREES DE LA BALTIQUE

INT No.	Prod.	National No.	TITLE / TITRE	CHART LIMITS / LIMITES DE LA CARTE				Scale / Echelle		Date	Format	Printer (Nat. No. - Date NE)
				South/Sud	North/Nord	West/Ouest	1st Ed/NE	1 :	Lat			
1201	DE	40	Sund, Hanöbukten Bis Pommersche Bucht (The Sound, Hanöbukten to Pomeranian Bay)	53°50.00'N	56°02.20'N	12°25.00'E	14°57.40'E	250 000	55°00'	98/10		
			Plan A - Ansteuerung von Trelleborg (Trelleborg Approaches)	55°20.48'N	52°22.63'N	13°						
			Plan B - Ansteuerung von Ystad (Ystad Approaches)	55°24.45'N	55°25.80'N	13°						
			Plan C - Hafen von Svinshamn (Svinshamn)	55°33.32'N	55°33.67'N	14°						
1202	See	Voir E.21										
1219	See	Voir E.21										
1293	See	Voir E.21										
1294	PL	154	Akrona to Niechorze	53°50.00'N	55°10.00'N	13°						
1295	See	Voir E.25										
1300	See	Voir D.25										
1301	DK	101	Kattegat - Lige Del, Northern Part	56°42.00'N	57°49.50'N	09°						
			Plan A - Approaches to Frederikshavn	57°24.50'N	57°30.70'N	10°						
			Plan B - Skagen	57°25.70'N	57°26.68'N	10°						
			Plan C - Frederikshavn	57°42.77'N	57°43.37'N	10°						
1302	DK	102	Kattegat - Lige Del, Southern Part	55°38.00'N	56°47.50'N	09°						
			Plan A - Indsejling Til Grenaa	56°24.10'N	56°25.70'N	10°						
			Plan B - Grenaa	56°24.46'N	56°25.48'N	10°						
			Plan C - Kobenhavn	55°08.00'N	55°55'50'N	12°						
1303	DK	103	Beltshavn	53°57.50'N	55°44.00'N	09°						
1304	DE	64	Fehmarn Belt - The Sound	53°56.00'N	55°44.50'N	11°						
1315	SE	0371	Marstrand	57°18.80'N	58°07.80'N	11°						

Tabular information MS Word



Graphics Information - Photoshop



Introduction

- ✦ Transfer of the S-11 Part B (all INT Charting Regions) into the IHO GIS Environment and provision of associated web services to IHO MS
 - From PDF versions.. To web services (maintenance tools, search functions, possibility of queries and statistical analysis, uploading/downloading functions, track history..)



Introduction

- ✦ For who? IHO MS, International Charting Coordination WGs/INT Chart Coordinators, IHB
- ✦ More dynamic and straightforward updating process... but iaw S-11 Part A “policy” and rights management
- ✦ Foundation: Version-controlled of Regional Databases, all become Ed. 3.0.0 in January 2016, S-100 compliant model.



Status Report & Timelines(1/2)

- ✦ 2014: initial development by KHOA and Project Definition
- ✦ Jan. ~ Oct. 2015: Video conference project meeting
- ✦ Mar.2015: Delivery of S-11 Part B GIS DB version 0.0
QC/QA by IHB
- ✦ Apr.~ Oct.: Develop management system by KHOA
- ✦ Oct-Nov: Experimentation by FI (Region E, BSHC),
US/CA (Regions A&B, USCHC&MACHC,), FR
(Regions F&G, MBSHC&EAtHC), UK (Region M,
HCA), IHB ...

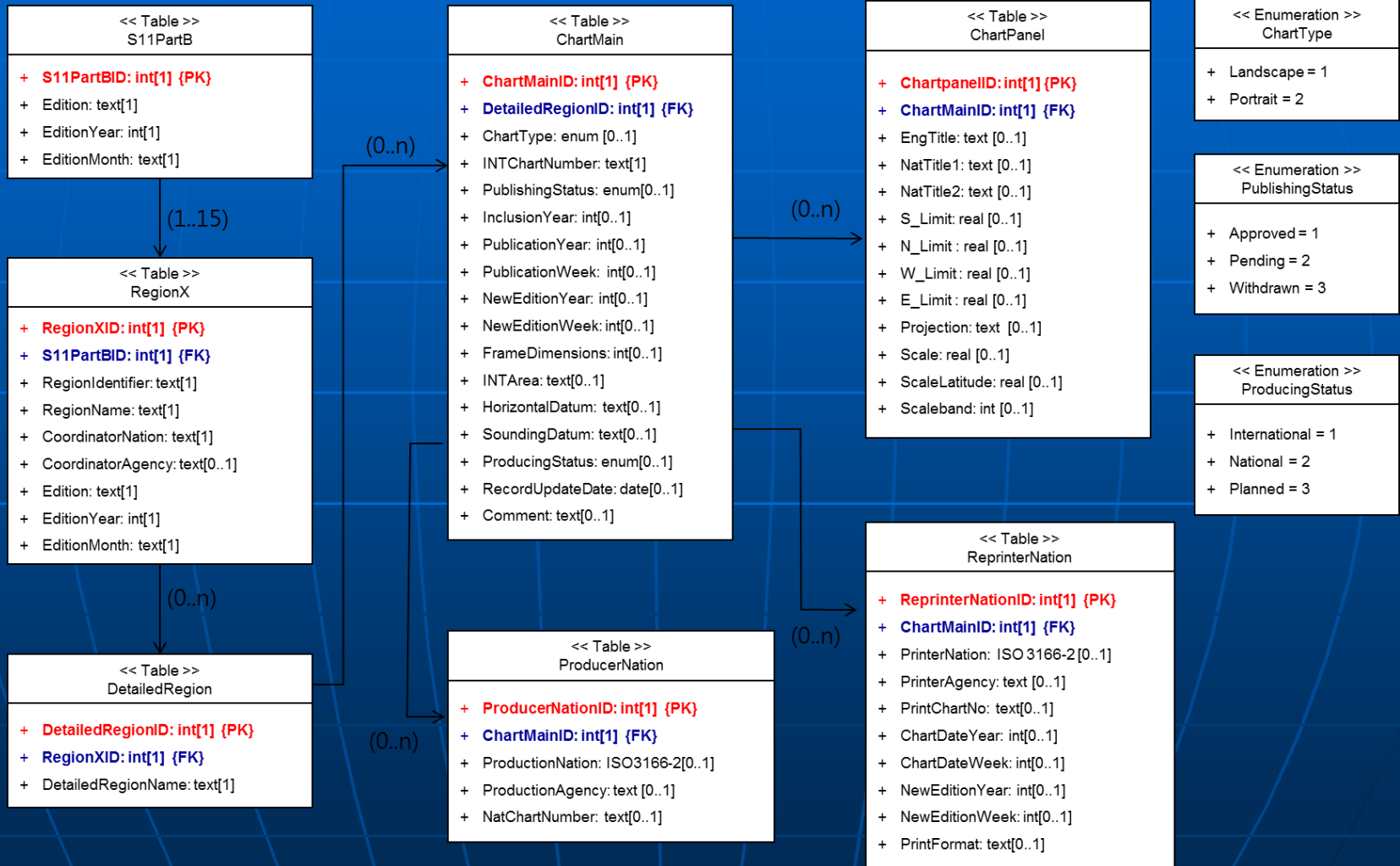


Status Report & Timelines(2/2)

- ✦ 24-26 Nov.2015: Database and ownership transfer from KHOA to IHB
- ✦ **Early 2016: S-11 Part B GIS commissioning**



INT Chart Database Model



INT Chart Web System

- ★ INT Chart Web Catalogue
 - Includes functions to search and download etc ...



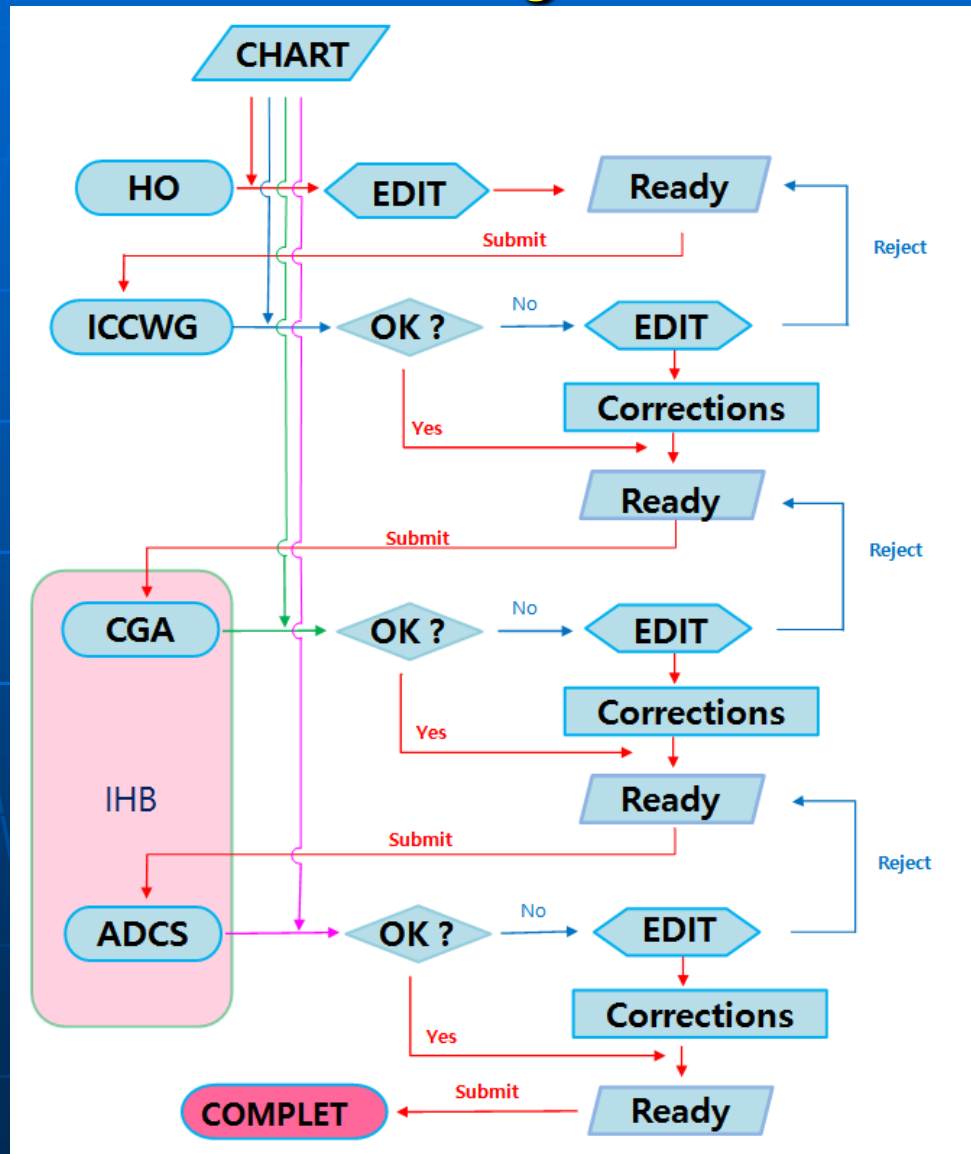
INT Chart Web System

- ★ INT Chart Web Manager

- Includes functions to apply management procedures and updating INT chart and to check progress and check history .

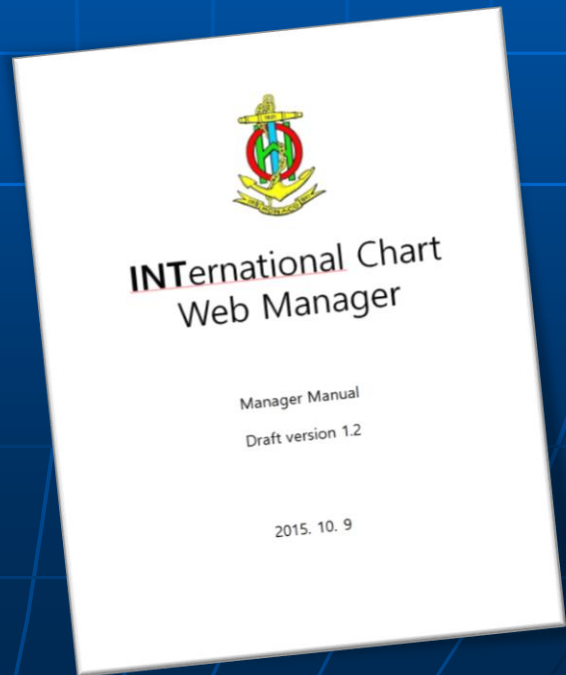


INT Chart Web Manager



Supporting Documentations

- ✦ General users' handbook
- ✦ Management users' handbook
- ✦ Technical documentation for Administrator
- ✦ Database model description



Justification and Impacts

- ✦ IHO MSs will be invited to update the S-11 Part B Region XX (INT chart) data using the web manager system running from 2016.

The HSSC is invited to

- ✦ Note this report

