



BUNDESAMT FÜR  
SEESCHIFFFAHRT  
UND  
HYDROGRAPHIE

# Oceanographic BSH data for ECDIS / ENC's

## Meeting of TWCWG 2, Victoria, 8 - 12 May 2017

Stephan Dick,  
Federal Maritime and Hydrographic Agency (BSH)



TWCWG 2 Meeting, Victoria, 8 - 12 May 2017

# Federal Maritime and Hydrographic Agency (BSH)

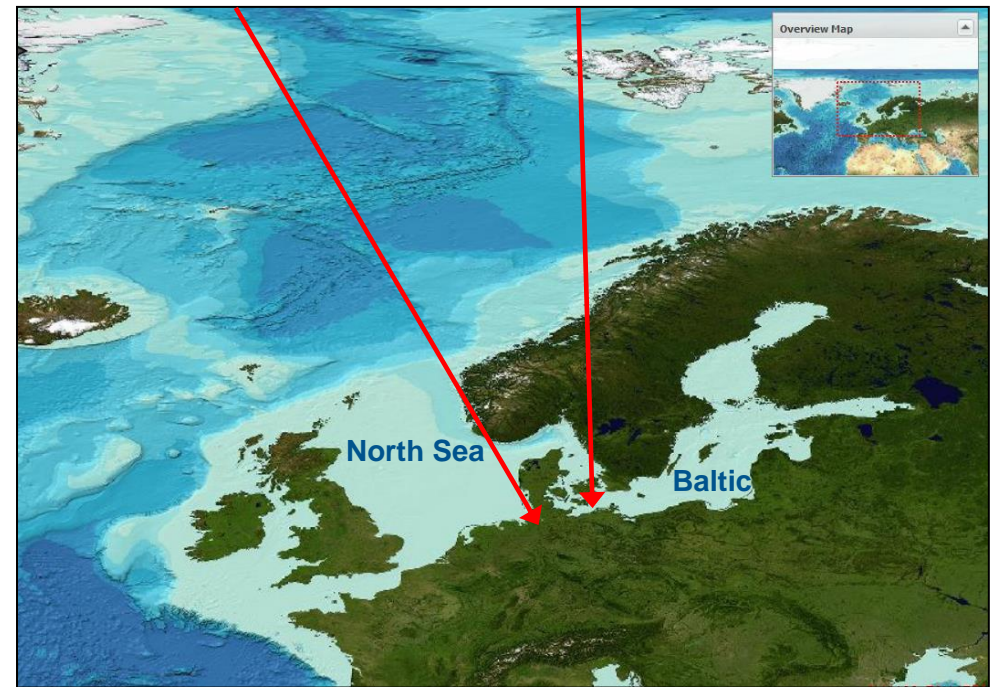
- Maritime authority of the Federal Republic of Germany
- Located in Hamburg in Rostock
- Maritime government research agency in the Federal Ministry of Transport and Digital Infrastructure
- Four departments:
  - Maritime security and general services to shipping
  - Nautical and hydrographic information services
  - Marine Science and Services
  - Central department



BSH Hamburg



BSH Rostock

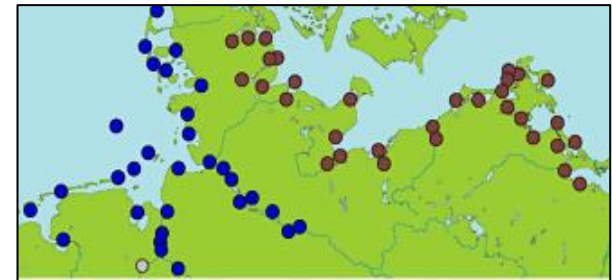


# Oceanographic data at BSH (I)

## Available observations (Real Time):

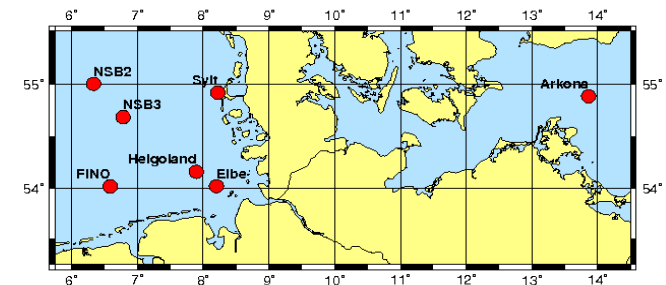
### 1. Water level

Measured water levels and tidal prediction for up to 64 positions in the German Bight and western Baltic (Federal Waterways and Shipping Administration)



### 2. Wave data

Measurements of up to 7 stations in the German Bight and western Baltic



### 3. Water temperature, salinity and currents

Measurements of the Marine Environmental Monitoring Network in the North Sea and Baltic Sea (MARNET)



# Oceanographic data at BSH (II)

## Available model forecasts:

### 1. Water level

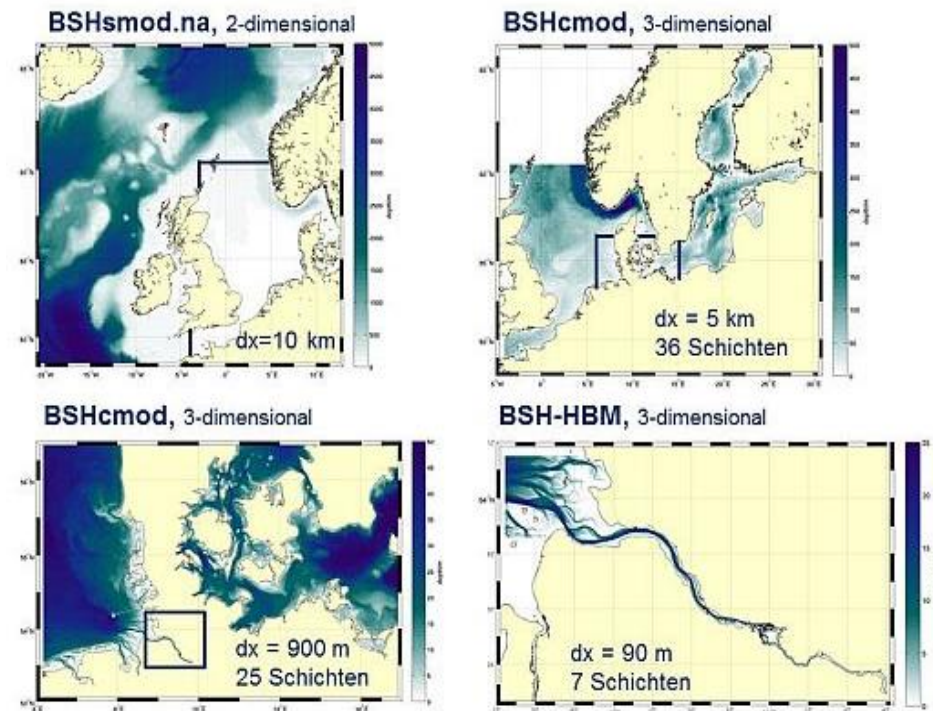
Forecasts of waterlevels and surges for North Sea, Baltic Sea and German coastal waters (up to 7 days)

### 2. Wave data

Forecasts of German Weather Service for Global Ocean, North Sea and Baltic Sea

### 3. Water temperature, salinity, currents and sea ice

Forecasts for North Sea, Baltic Sea and German coastal waters (up to 3 days)



BSH model grids and nesting

# Oceanographic data at BSH (III)

## Additional predictions and services:

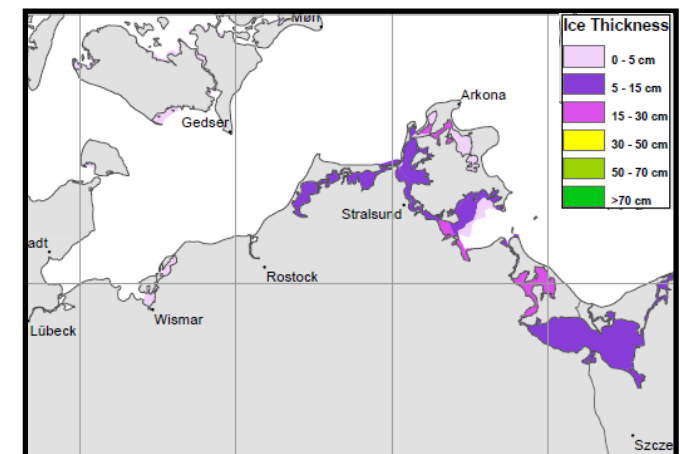
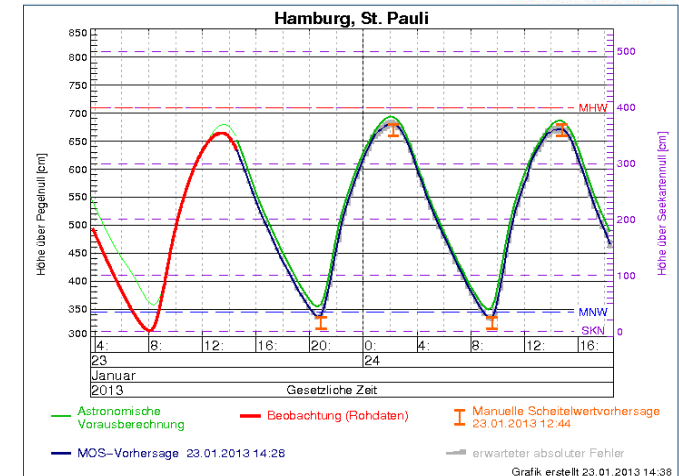
### 1. Water level predictions

MOS prognoses (MOS: Model Output Statistics) for up to 64 positions in the German Bight and western Baltic (ASCII)

### 2. Ice information

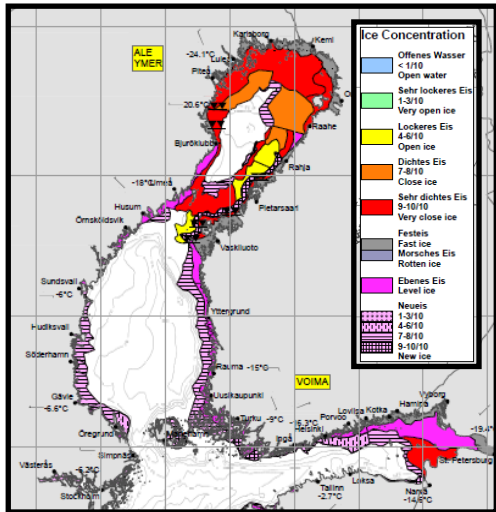
Ice charts of Baltic Sea, western Baltic and North Sea

(also available: S-411 Ice Information Product)

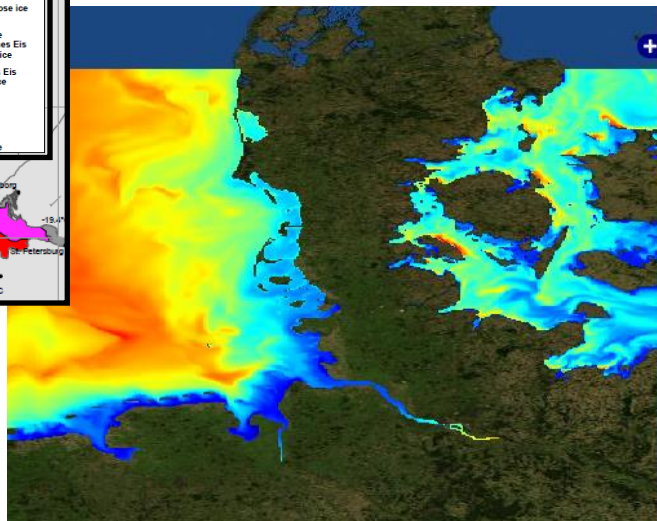


# Examples:

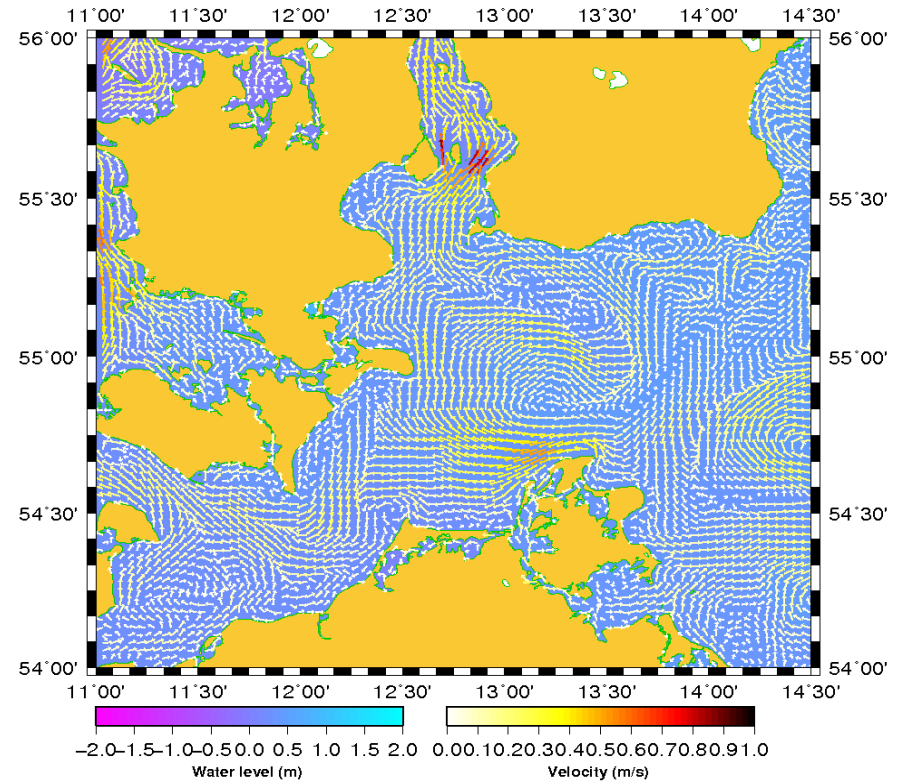
1. Sea ice concentration (Baltic)
2. Surface water temperatures in North Sea and Baltic
3. Currents (model forecasts )



1



2



3

## Other sources for oceanographic data

### BSH contributes to a European Marine Service: Copernicus Marine Environment Monitoring Service (CMEMS)

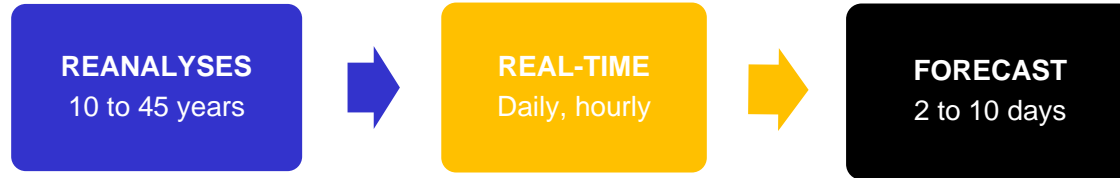


CMEMS provides continuous information on the state of the global ocean and regional European sea areas

Central service desk for all products and data:

**<http://marine.copernicus.eu/>**

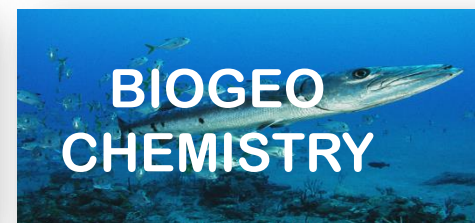
# Copernicus Marine Environmental Monitoring Service



- 1 Global
- 2 Arctic
- 3 Baltic
- 4 NWS
- 5 IBI
- 6 Med Sea
- 7 Black Sea

- DISCOVER
- VIEW
- DOWNLOAD
- Open & Free

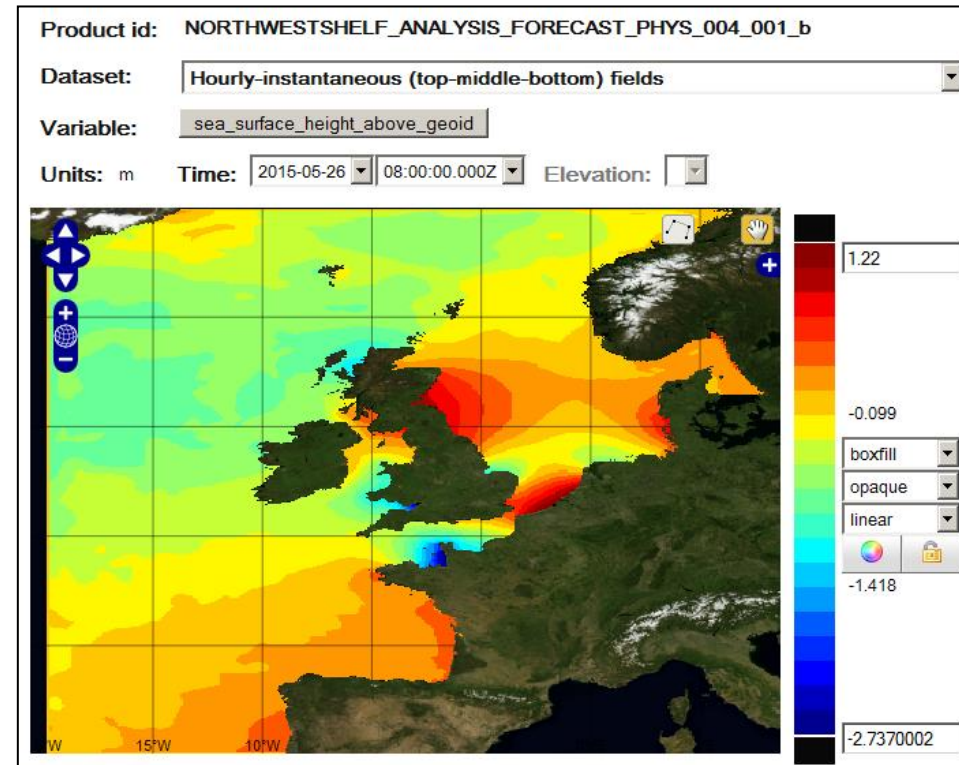
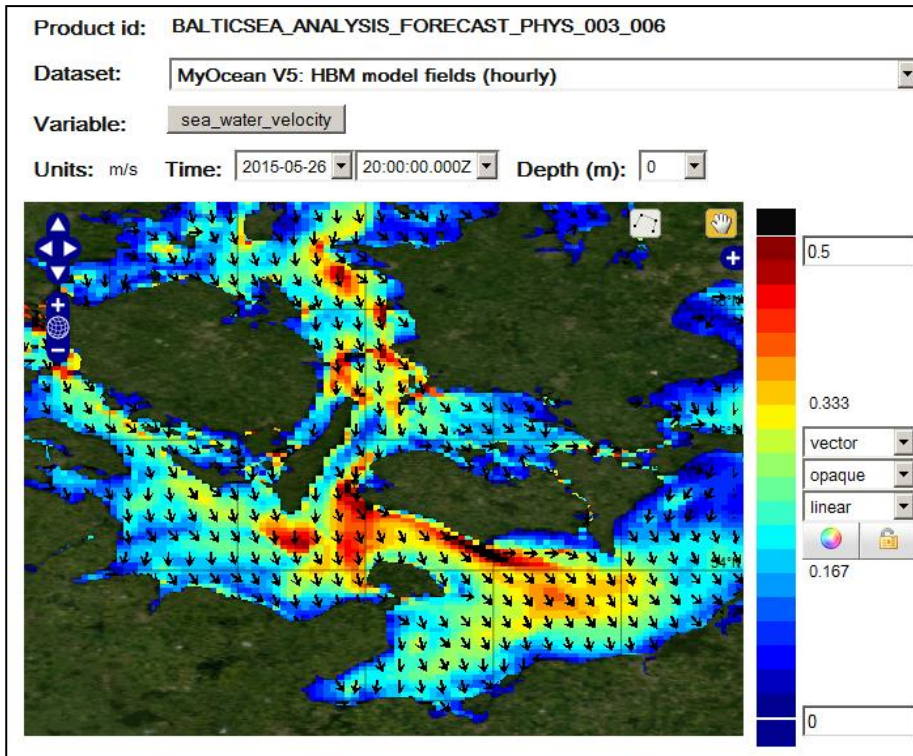
## ESSENTIAL OCEAN VARIABLES





## Examples of products:

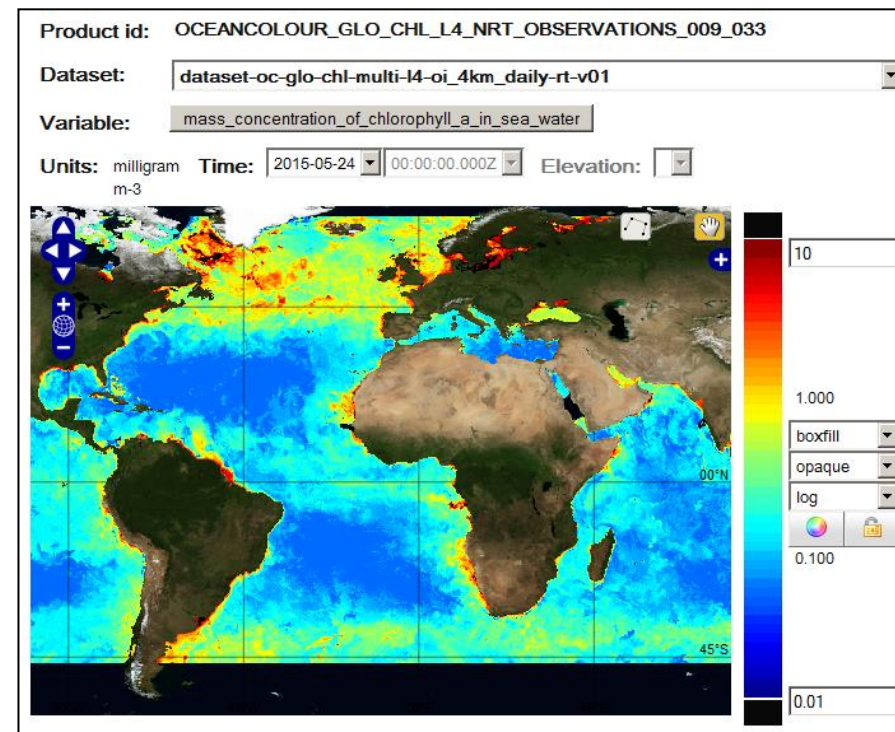
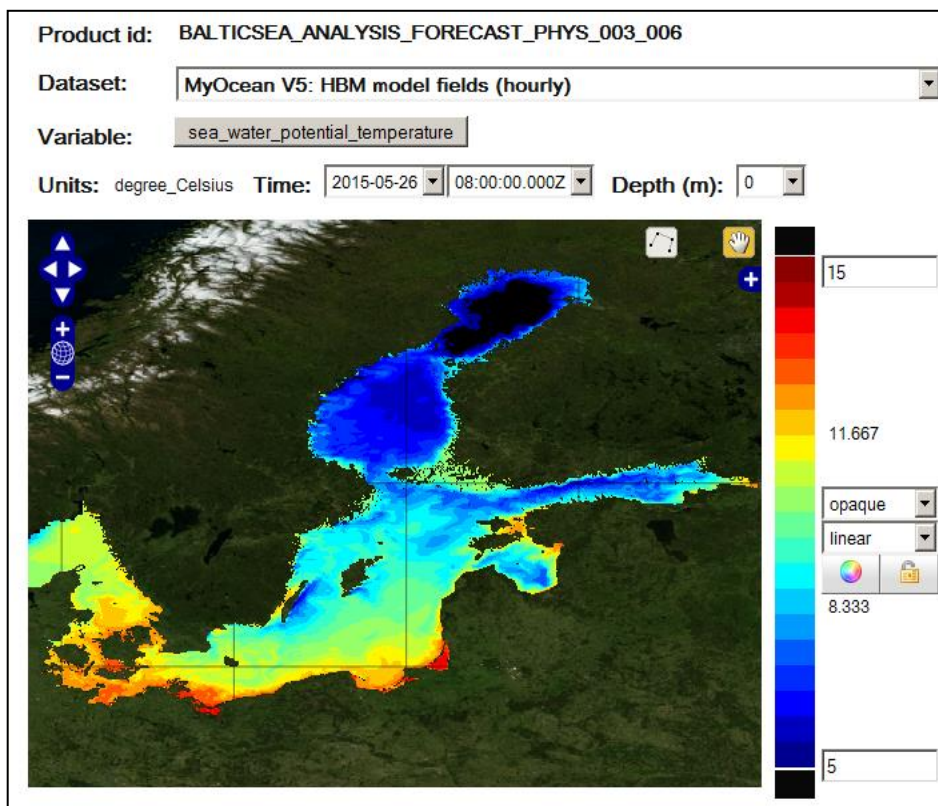
Baltic Sea: Predicted surface currents



NW Shelf Area: Predicted water levels

## Examples of products:

Baltic Sea: Predicted water temperatures (SST)



Measured chlorophyll concentration (satellite)

# New project ImoNav

- ImoNav - Integration of high resolution marine geodata into electronic navigation systems
- National project to develop a new navigation service for (German) marine water ways
- Partner: BSH and two companies (smile consult and SevenCs)
- Coordinator: BSH
- Duration: 3 years
- Start: 01.06.2017



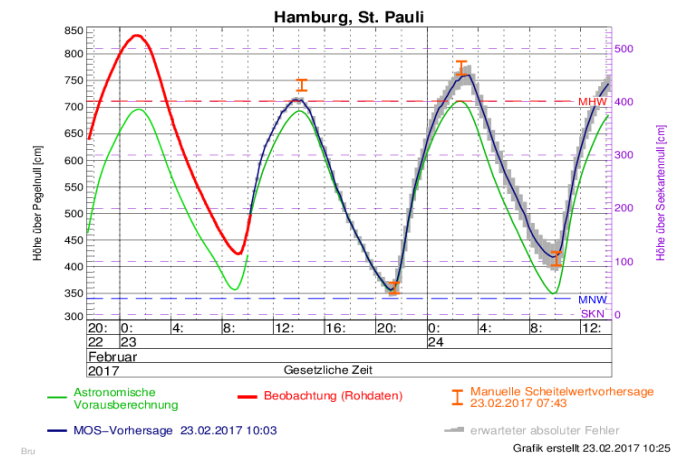
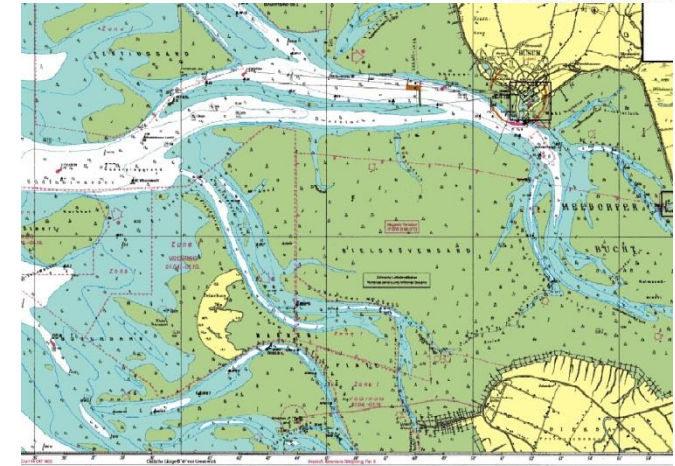
# New project ImoNav



BUNDESAMT FÜR  
SEESCHIFFFAHRT  
UND  
HYDROGRAPHIE

## Project aims:

- Provision of oceanographic data (water levels, currents, temperature...) and high resolution bathymetries for navigation and ship traffic management
- Combination of bathymetry data with water level measurements and forecasts
- Presentation and demonstration of new pilot products in ECDIS/ENC systems
- Development of concepts for communication methods and transfer of data on board of ships
- Pre-operational service and test

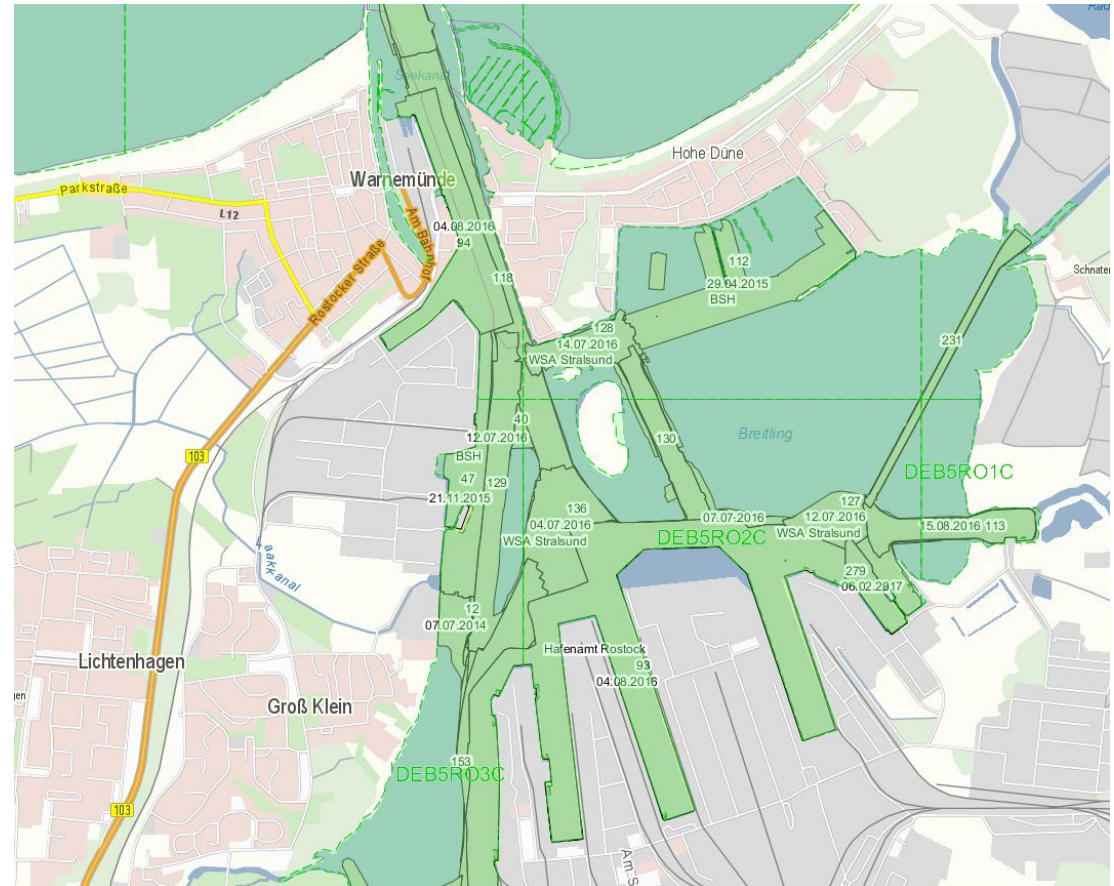


# Tasks of BSH: Hydrographic data I



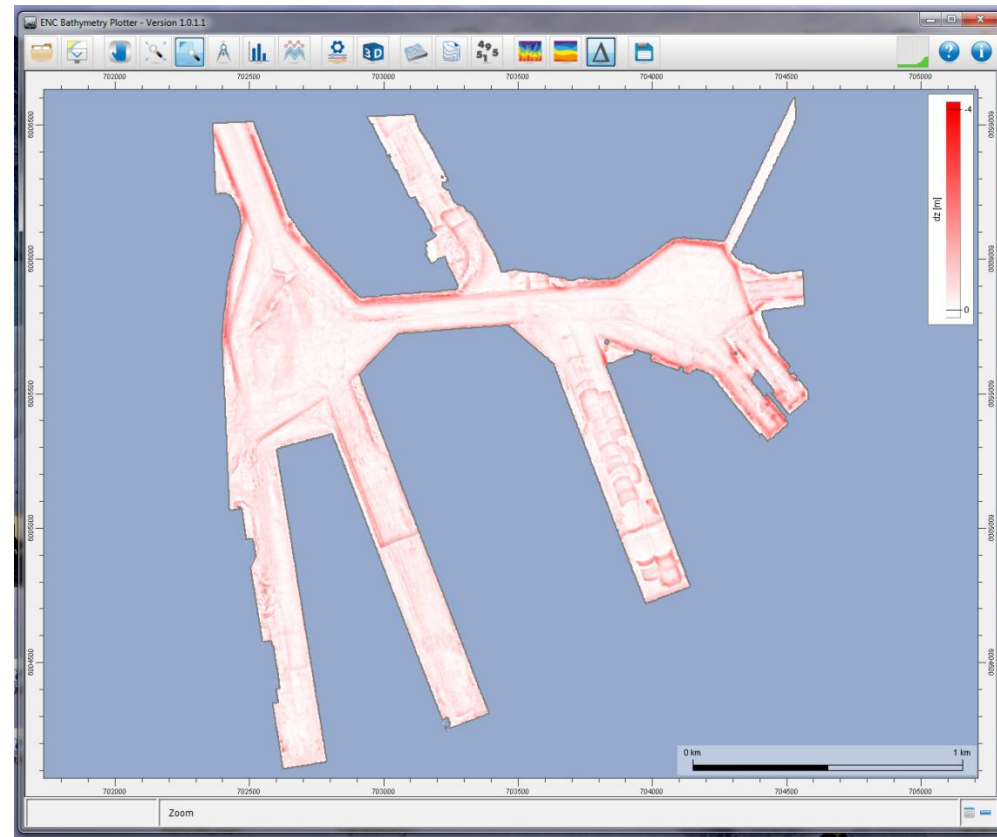
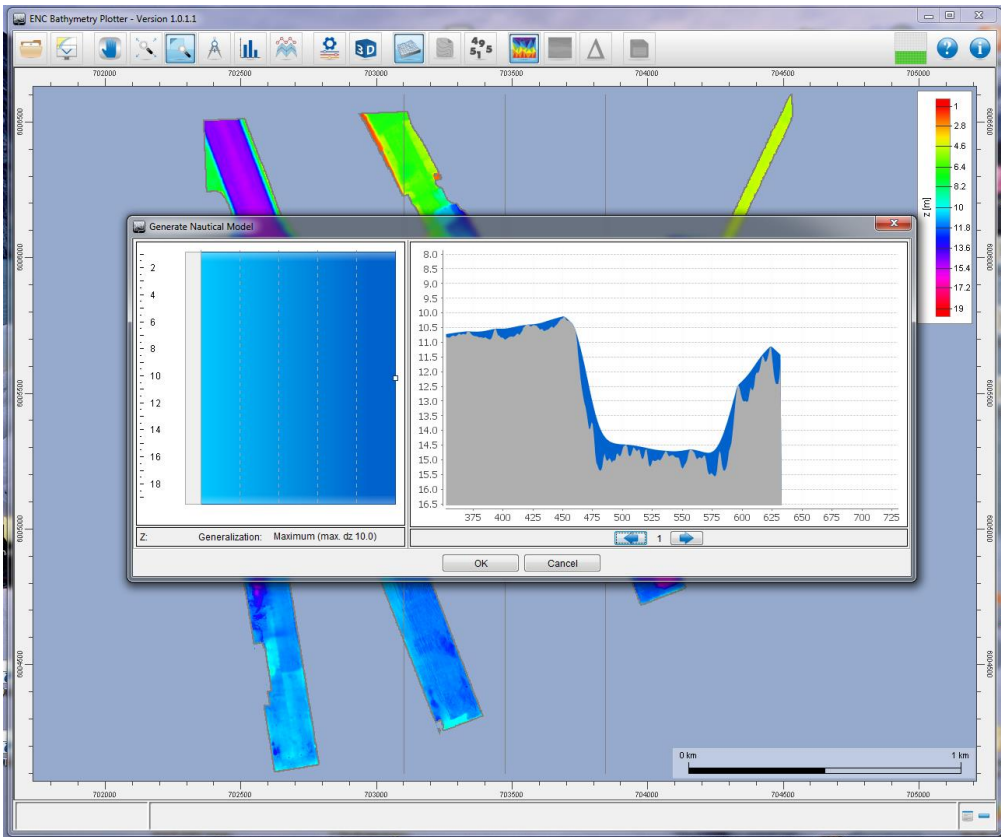
BUNDESAMT FÜR  
SEESCHIFFFAHRT  
UND  
HYDROGRAPHIE

- Automatic collection of hydrographic data from different institutions
- Merging and combining of different hydrographic data
- Creation of high resolution gridded bathymetry
- Automatic processing of new bathymetry data within 1-2 days



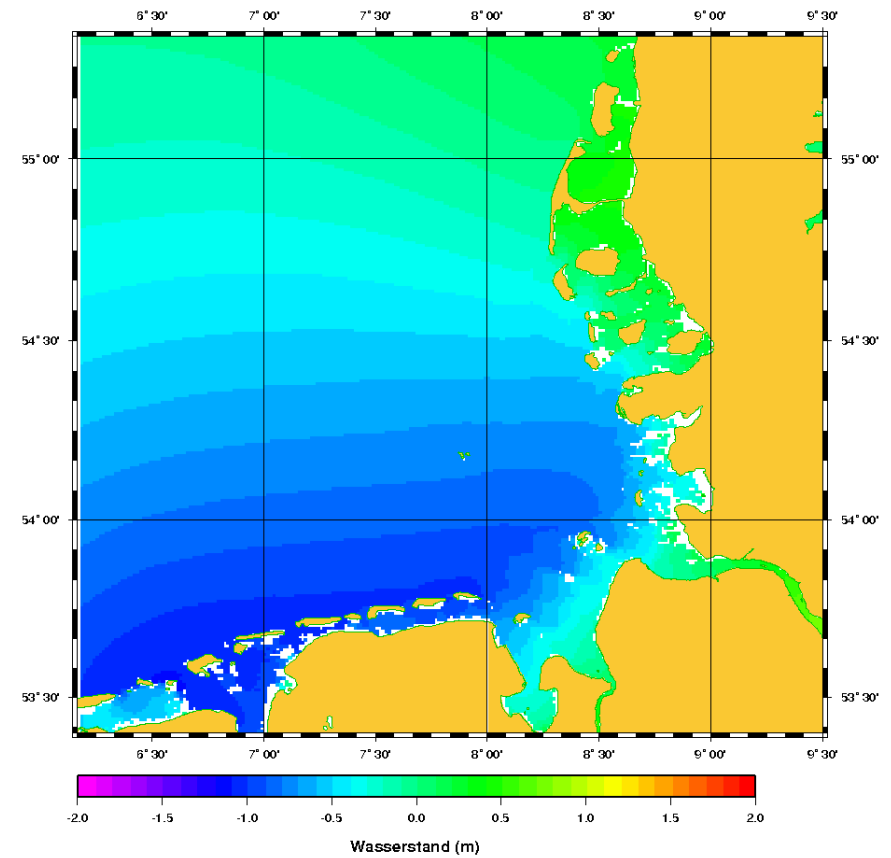
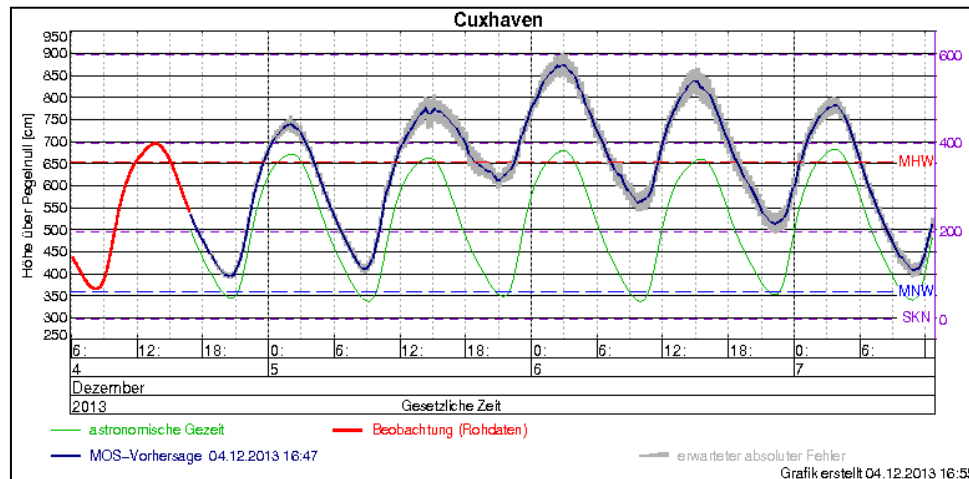
# Hydrographic data II

Main task: Production of a smooth digital ground model



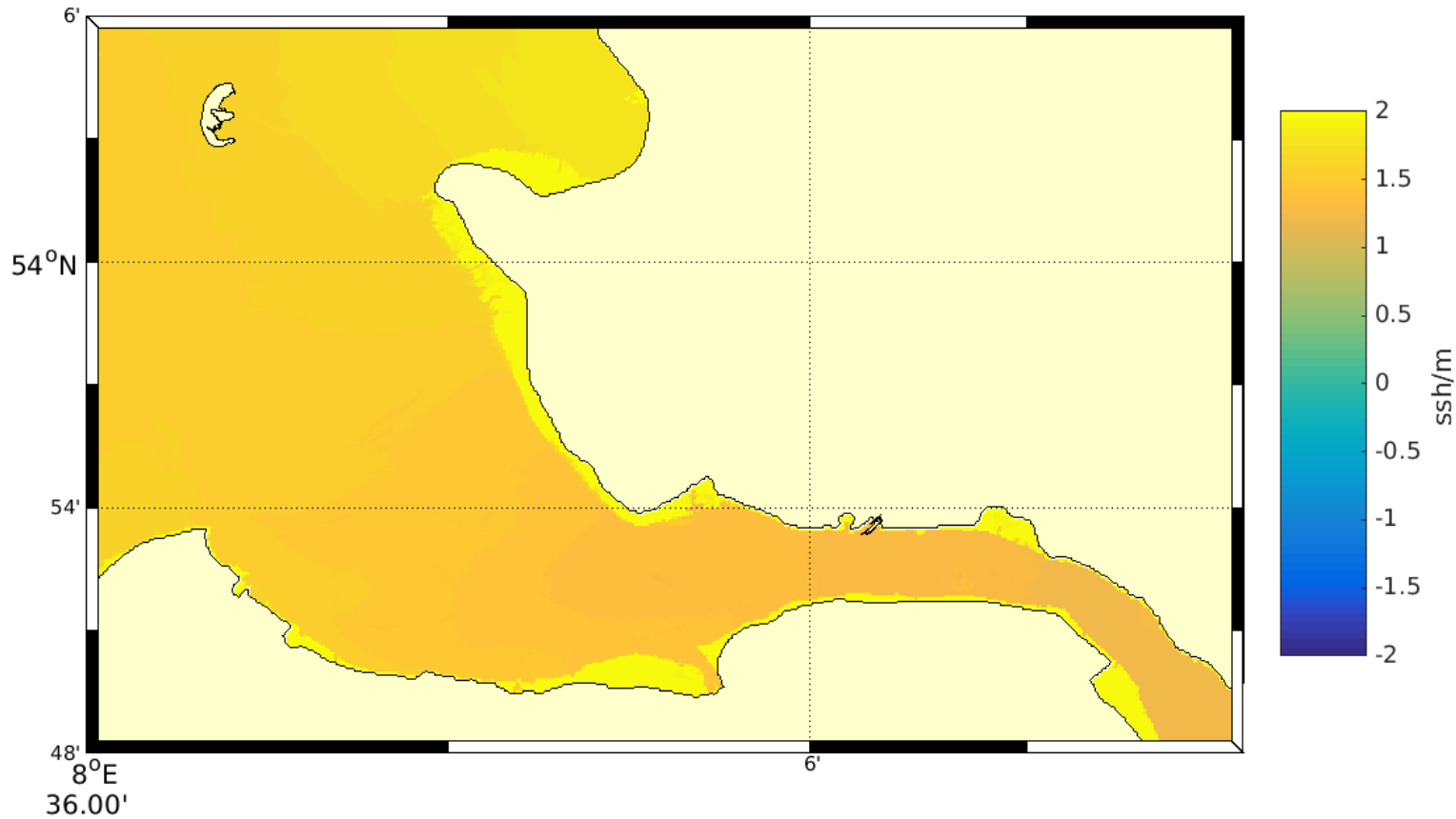
# Tasks of BSH: Oceanographic data

1. Horizontal distribution of total water levels in German Bight (forecasts of operational BSH models)
2. Time series of measured water levels, astronomical tidal prediction and MOS forecasts at station Cuxhaven
3. Task: Combination of data sets
4. Provision of other oceanographic data



# Water levels

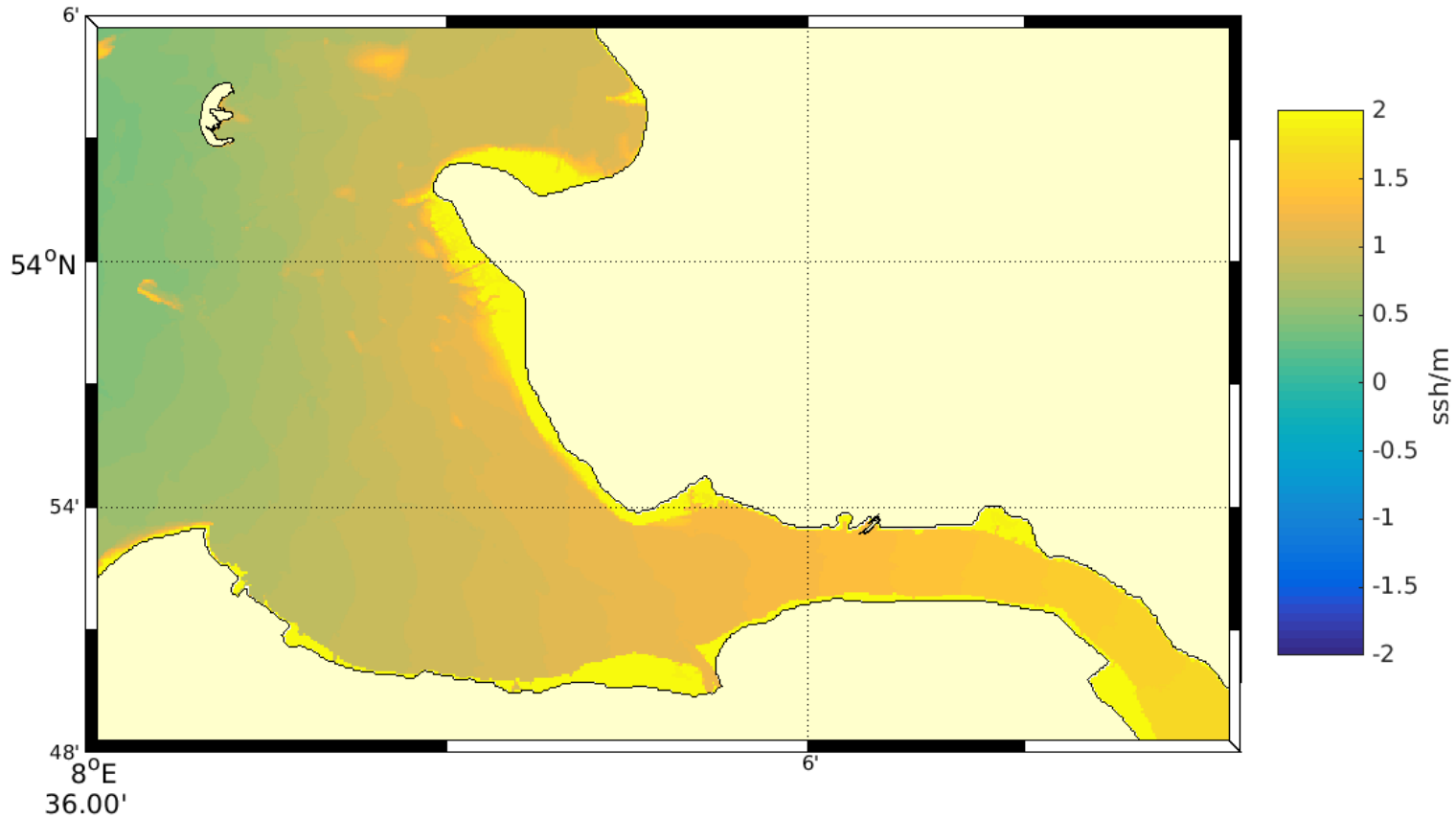
30-Dec-2016 00:15:00 UTC





# Water levels

30-Dec-2016 02:30:00 UTC

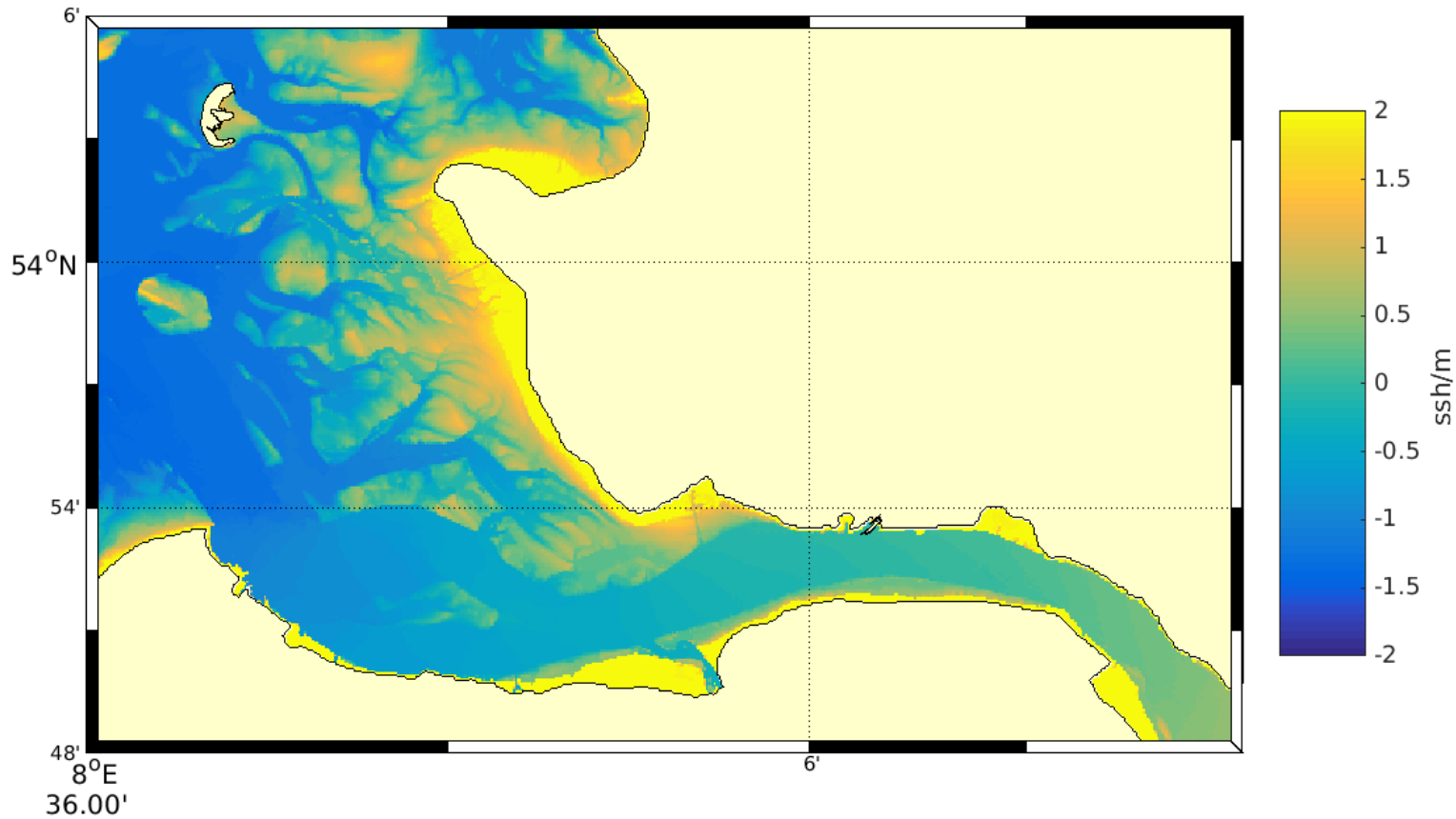


# Water levels



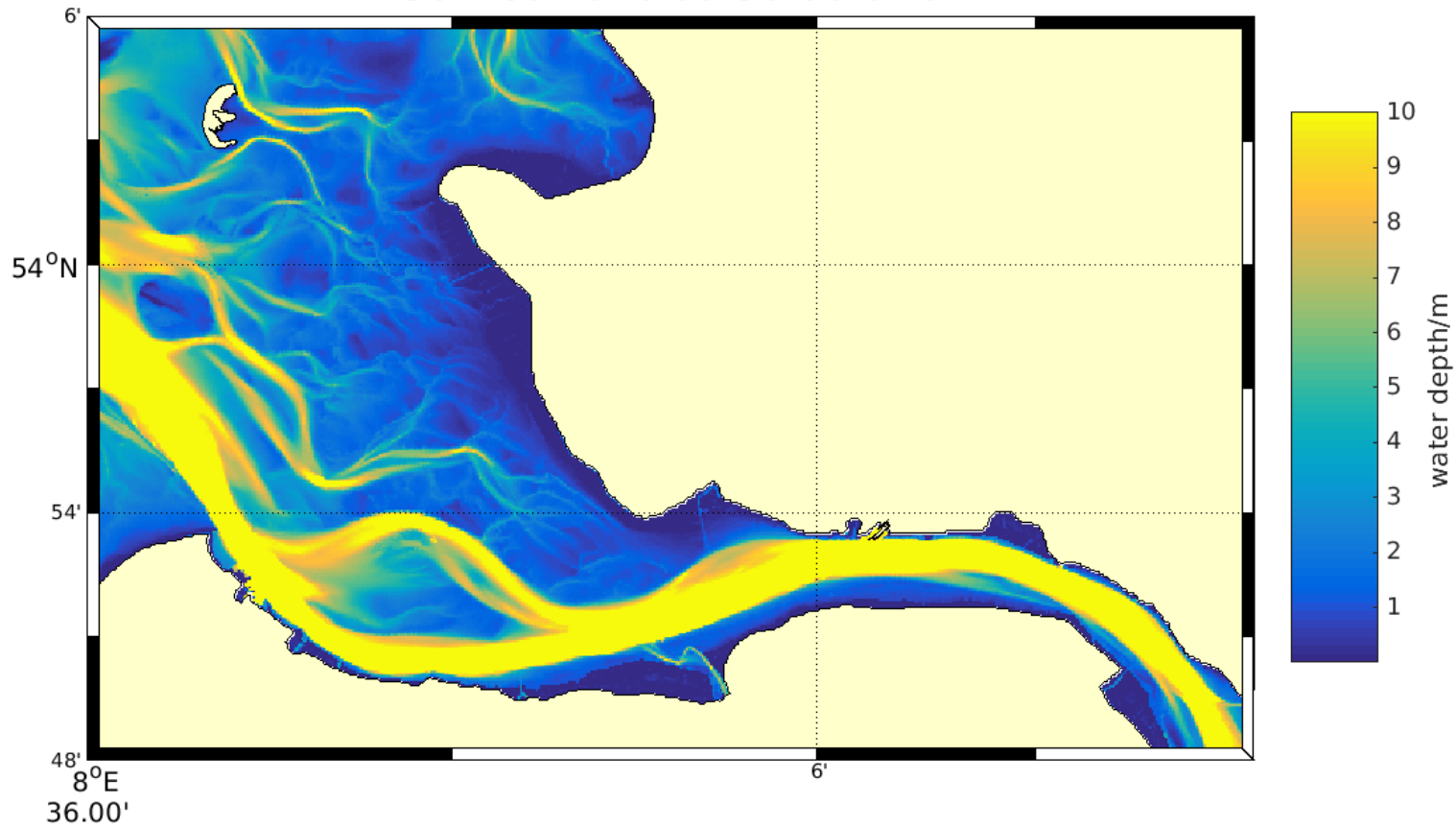
BUNDESAMT FÜR  
SEESCHIFFFAHRT  
UND  
HYDROGRAPHIE

30-Dec-2016 05:00:00 UTC



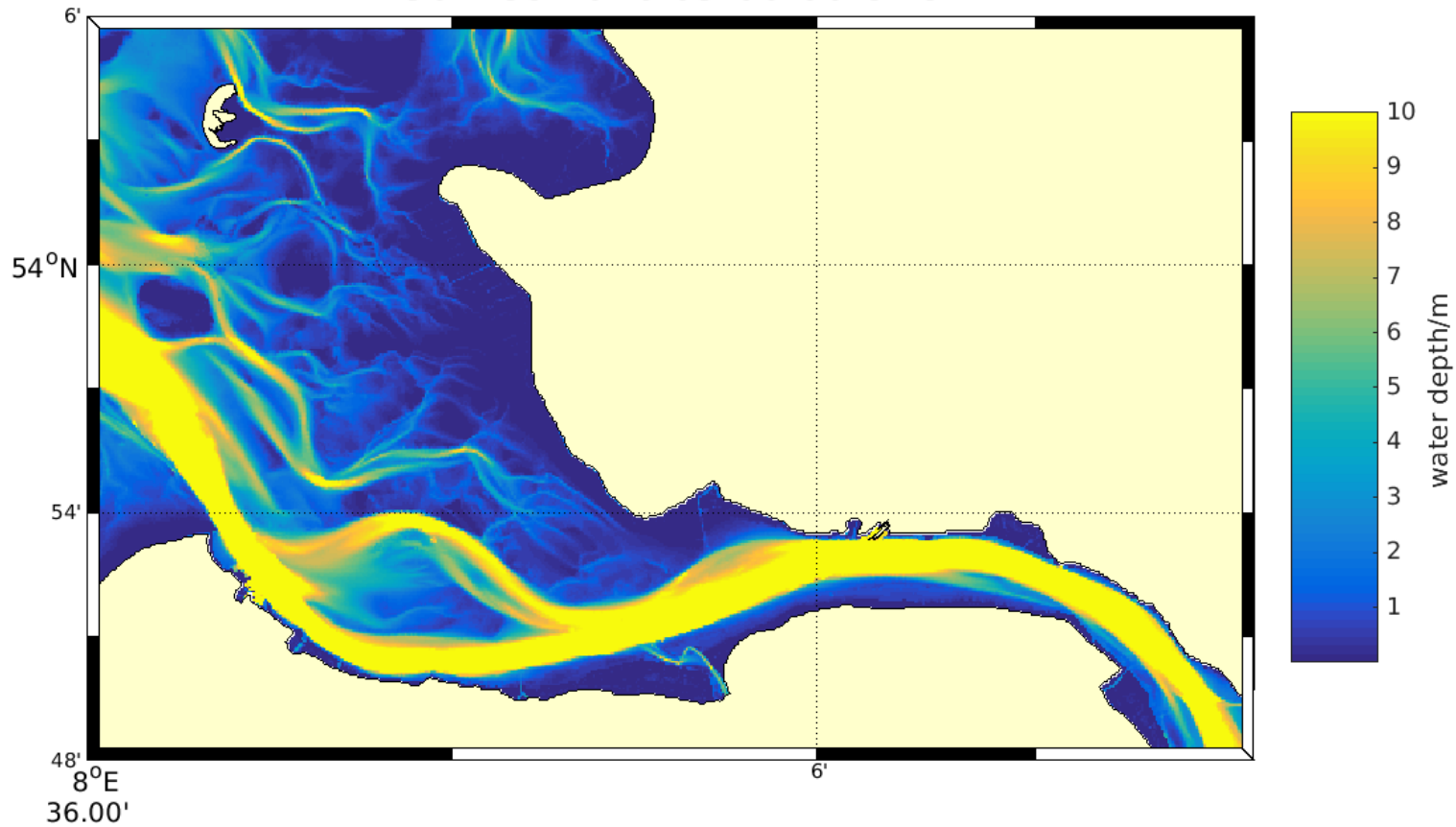
# Water levels + depth = dynamic water depth

30-Dec-2016 00:30:00 UTC



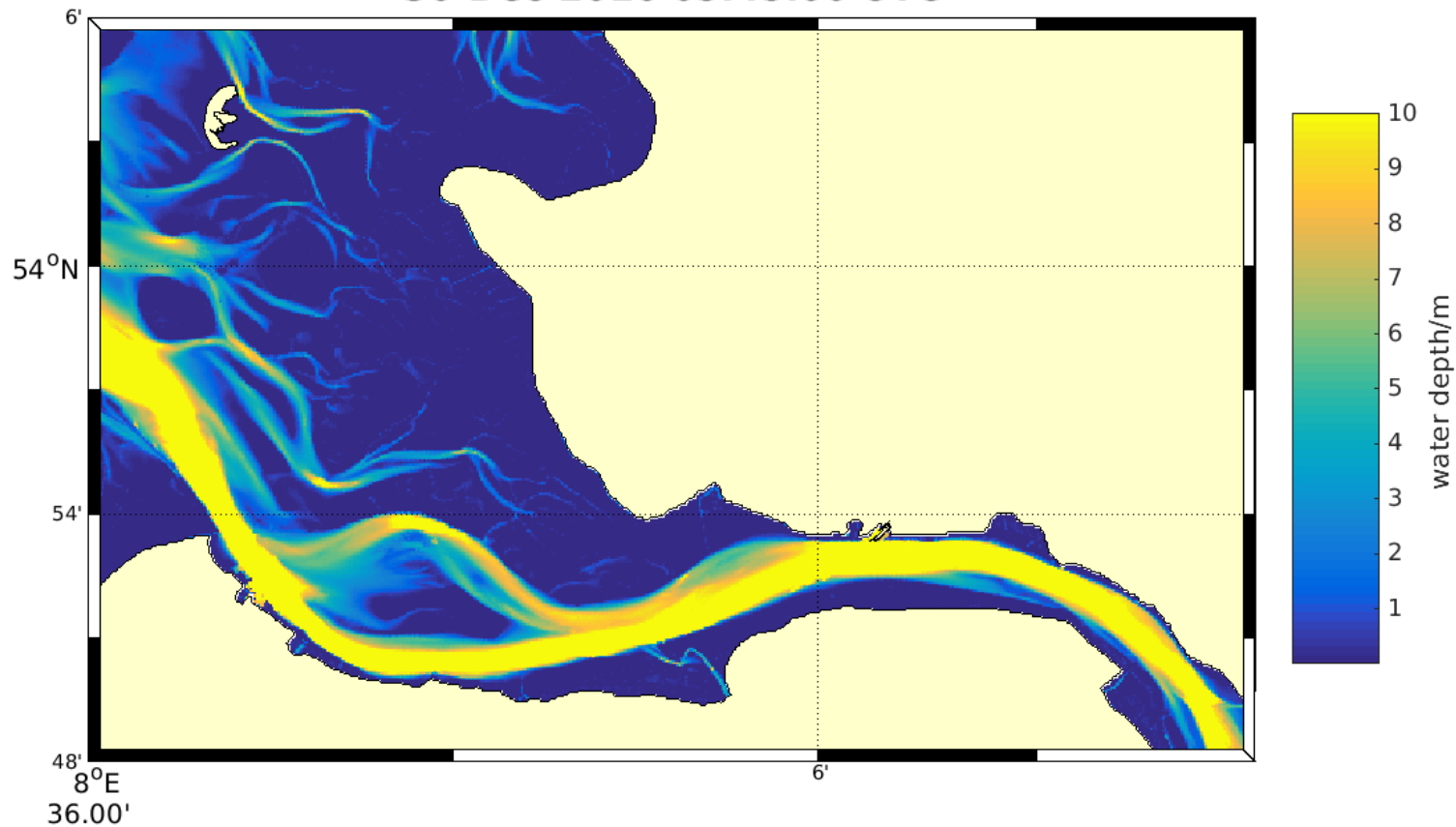
# Water levels + depth = dynamic water depth

30-Dec-2016 03:00:00 UTC

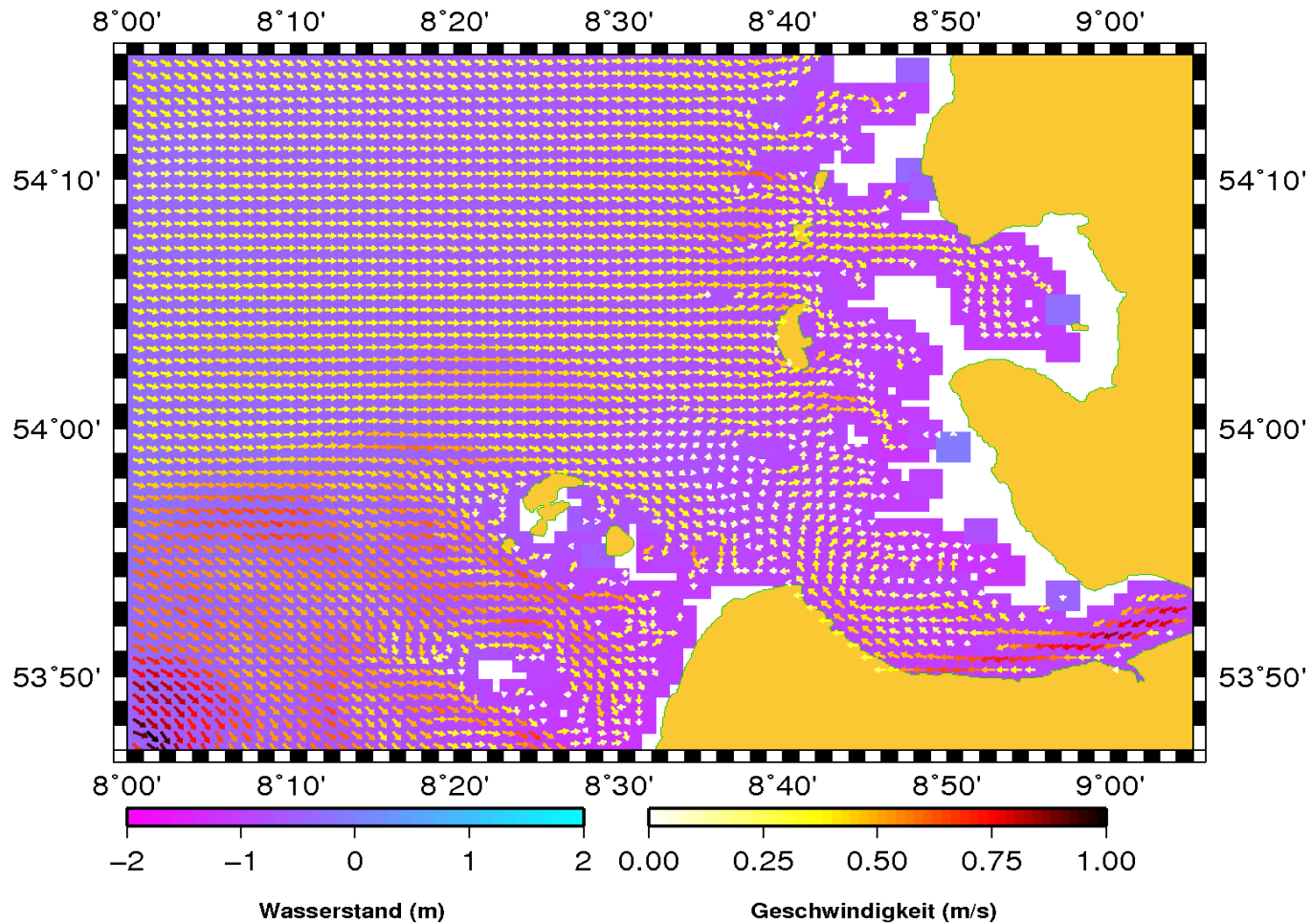


# Water levels + depth = dynamic water depth

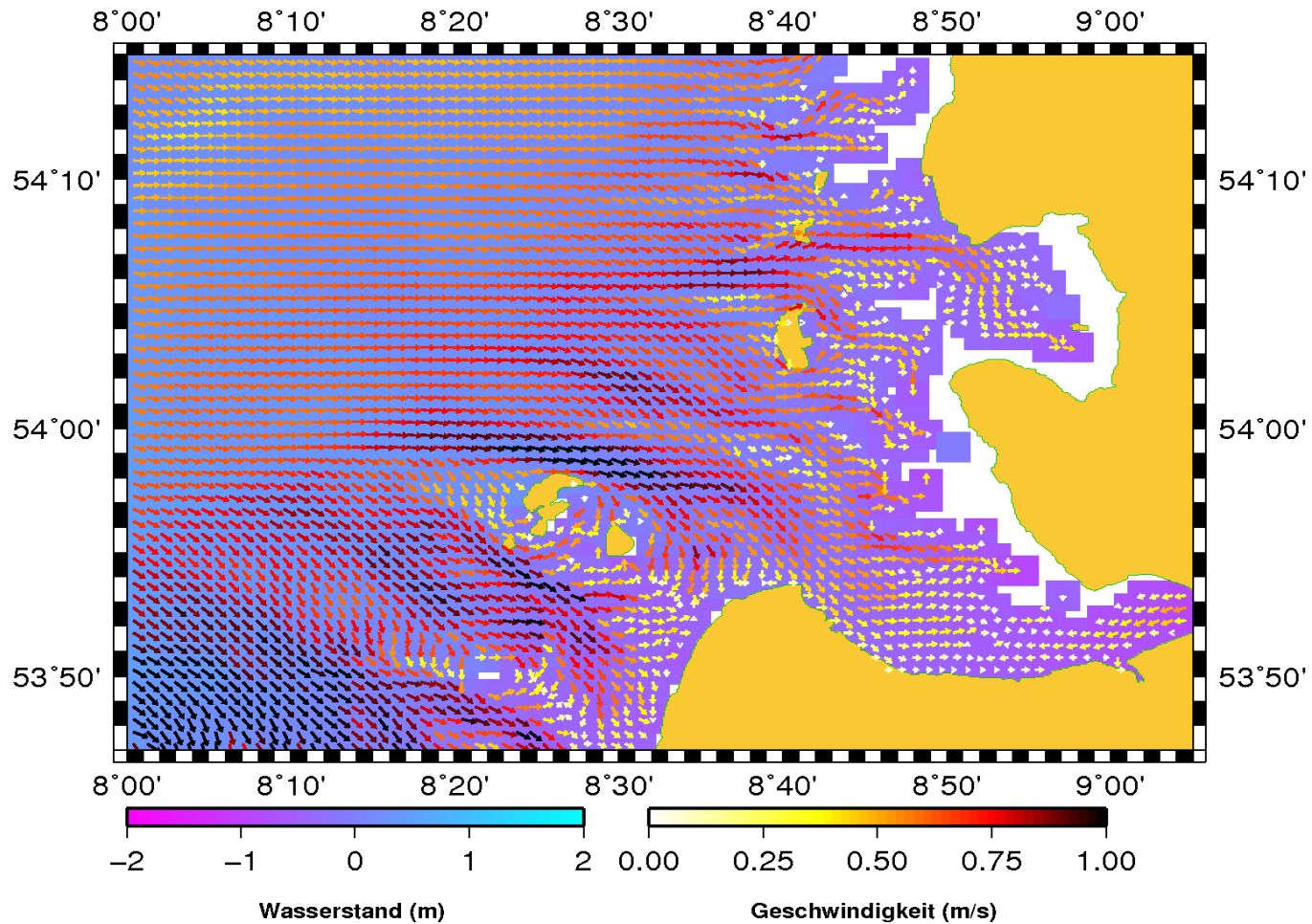
30-Dec-2016 05:45:00 UTC



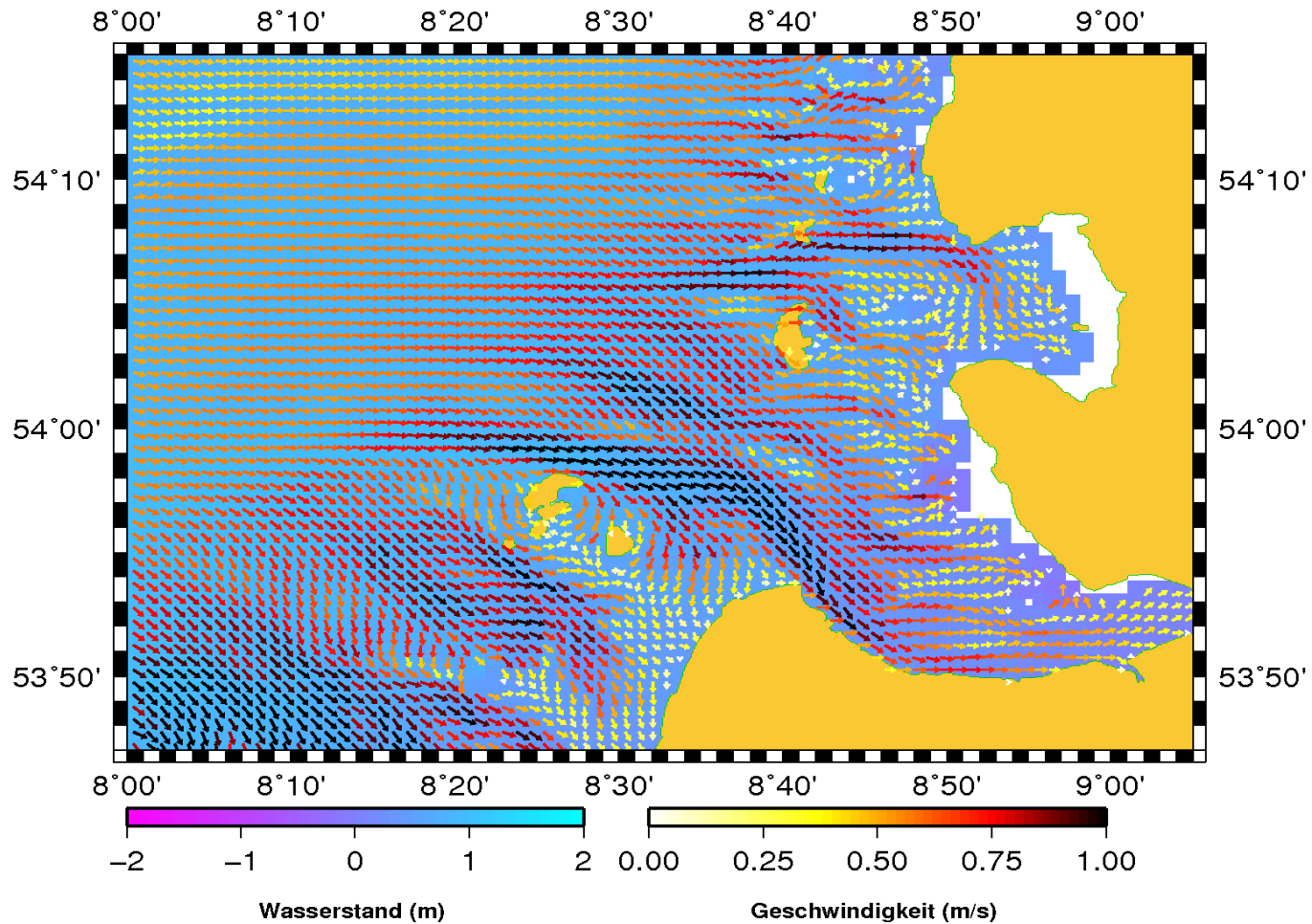
# Oceanographic data - currents



# Oceanographic data - currents

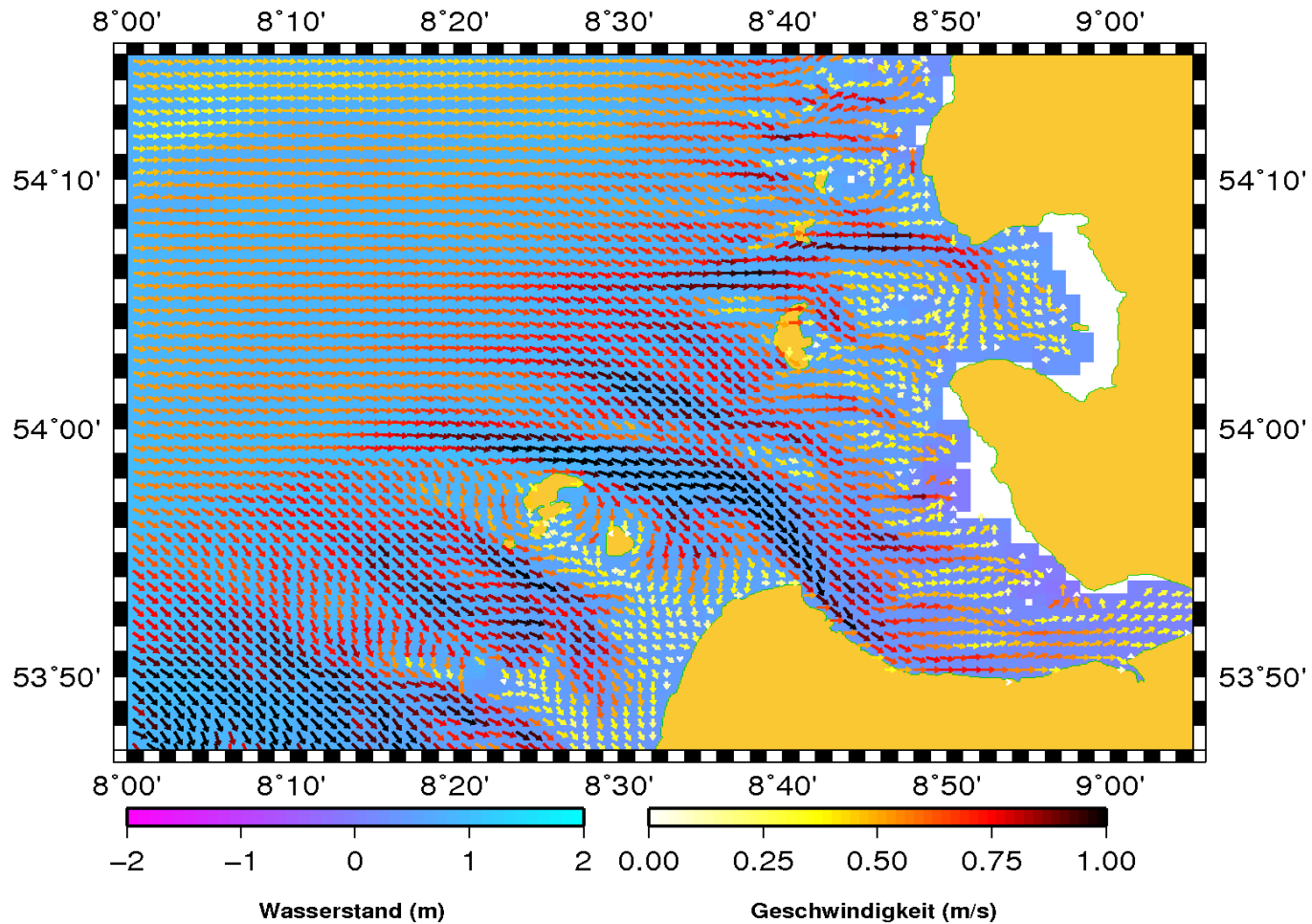


# Oceanographic data - currents

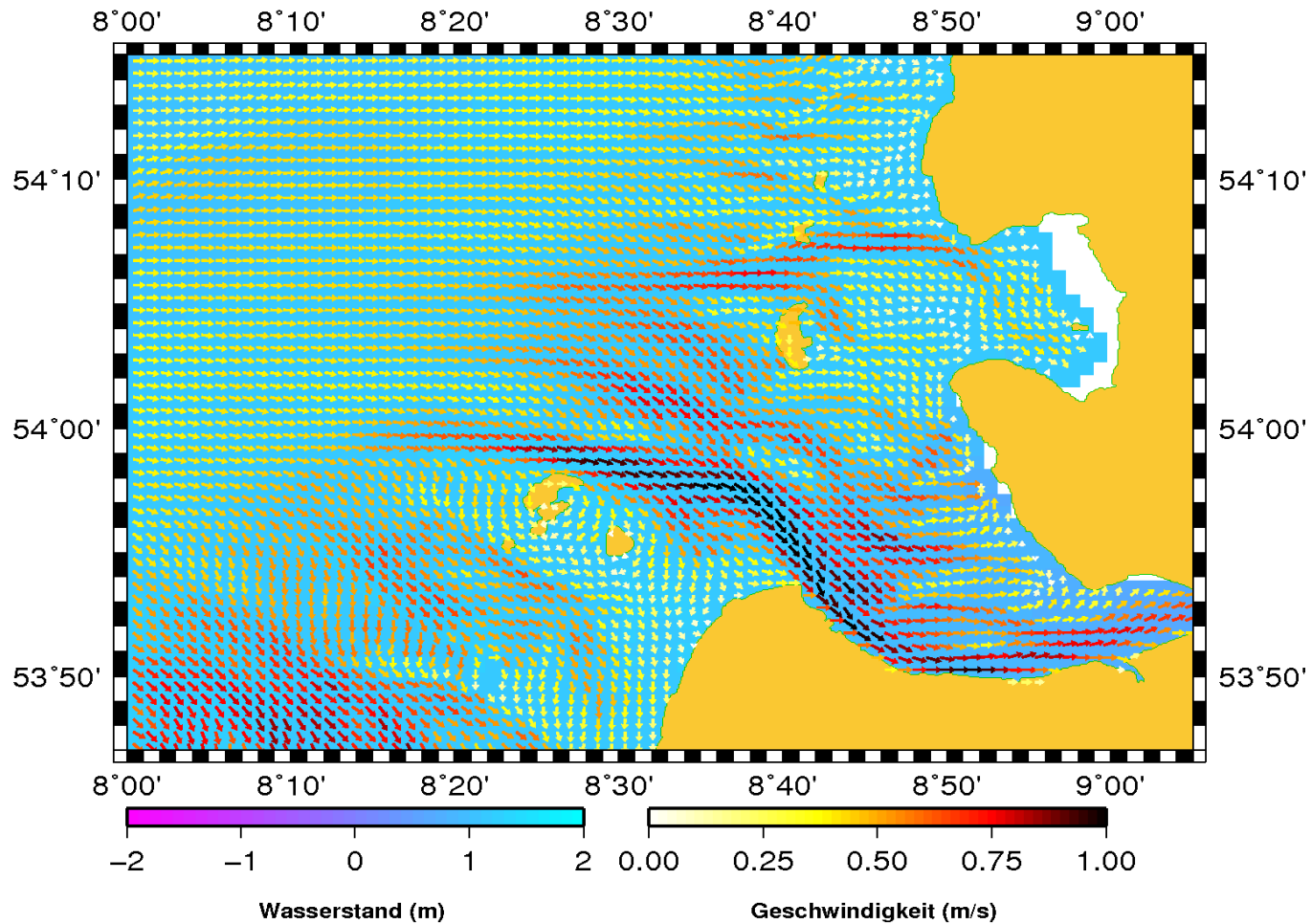




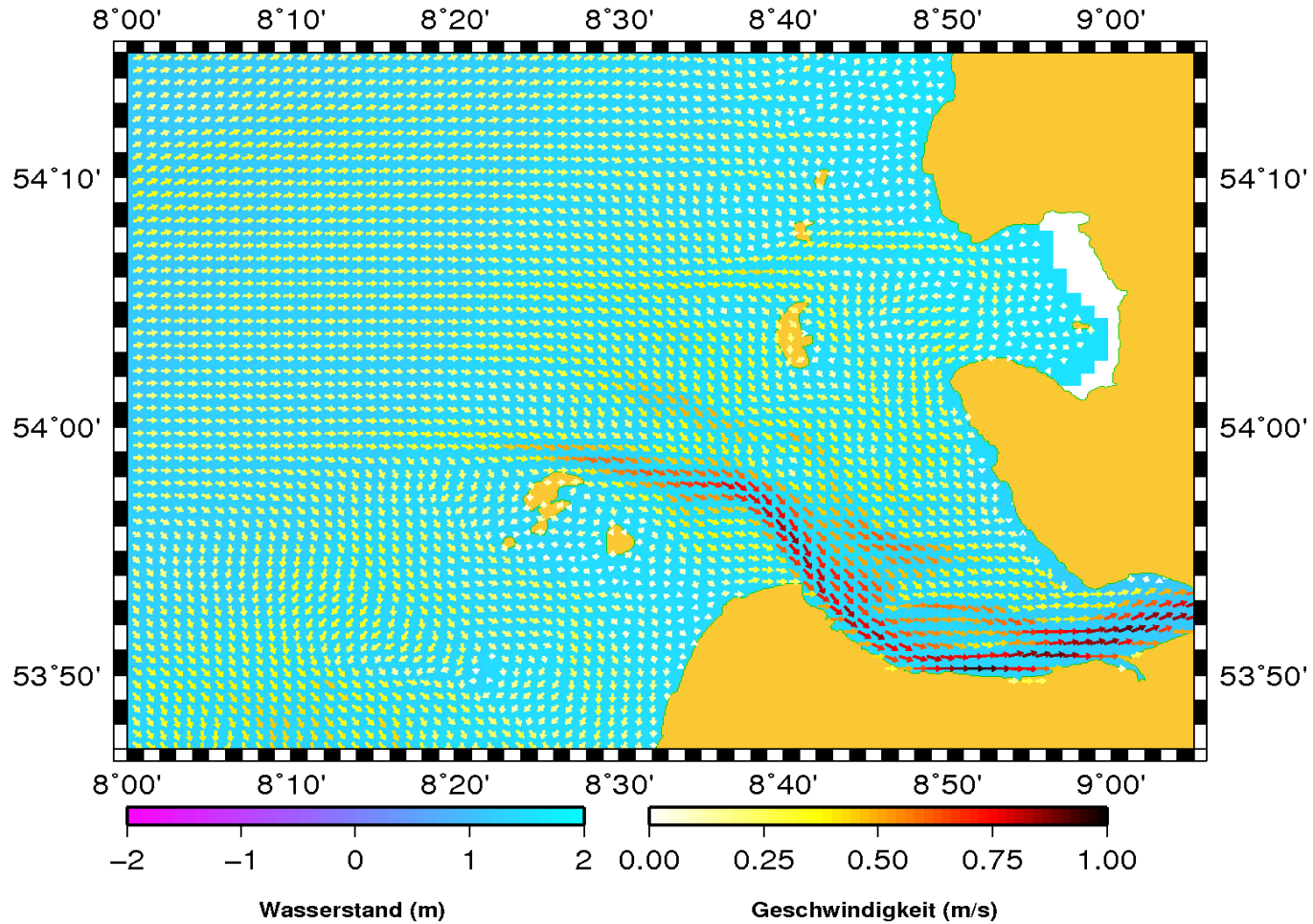
# Oceanographic data - currents



# Oceanographic data - currents



# Oceanographic data - currents



# Conclusions

- At BSH, many oceanographic data (observations and model forecasts) are available
- The European Marine Copernicus Service (CMEMS) provides information for the global ocean and European sea areas
- In the German project ImoNav a new service for navigation and ship traffic management will be developed
  - Combination of high resolution bathymetry with water level measurements and forecasts
  - Presentation and demonstration of new pilot products (water levels, depths, currents...) in ENC systems
  - ImoNav shall support work of TWCWG and provide S-104 and S-111 test datasets

Thank you!



BUNDESAMT FÜR  
SEESCHIFFFAHRT  
UND  
HYDROGRAPHIE

