

Joint European Coastal Mapping Programme Update February 2014

5th IHO EC meeting, Joint European Programme of Coastal Mapping Oostende 19 February 2014

Report on action taken

3rd IHO EC meeting, in Saint-Mandé, on **26 June 2013**
tasked Germany, France and Sweden

DG Mare meeting in Brussels on **10 September 2013**
on the future of European coastal mapping.

Meeting in Brest on **2-3 October 2013**
HOs from Germany, France and Sweden, GSI Ireland and ISPRA Italy,

Submission paper **18 October 2013**
Sent towards DG Mare

4th IHO EC meeting, in Brussels, on **24 October 2013**,
positive feedback DG Mare

3 February 2014 more precise feedback
Specially include geology



5th IHO EC meeting, Joint European Programme of Coastal Mapping Oostende 19 February 2014

Updates to the submission paper to DG Mare

(Submission paper 19 February 2014, to be endorsed by the WG)

- Adequate coordination between seaside surveys, landside surveys (and institutes in charge)
- Cost efficiency of different surveying methods depending on the conditions
- Analysis of available datasets
- Cost assessment for building seamless products

5th IHO EC meeting, Joint European Programme of Coastal Mapping Oostende 19 February 2014

More precise feedback from DG Mare

- 1-evaluate the economic benefits of a joint programme compared to programmes by individual Member States in your WP5.
- 2-look at geology of coastal area as well as topography
- 3-compare relative costs of shallow-water LIDAR, terrestrial LIDAR and hydroacoustic surveying
- 4-determine the most appropriate technique for each stretch of coast (I am not sure we can identify "priority" areas for mapping)
- 5-provide a web-site showing examples of good practice
- 6-See how we can join up with land-based efforts.

5th IHO EC meeting, Joint European Programme of Coastal Mapping Oostende 19 February 2014

Bathymetry and sedimentology

It seems sensible to deal with sedimentology as with bathymetry

As it is needed for

- evaluation of erosion,
- modélisation and prediction of wave storm surges
- evaluate needs of periodical resurveys

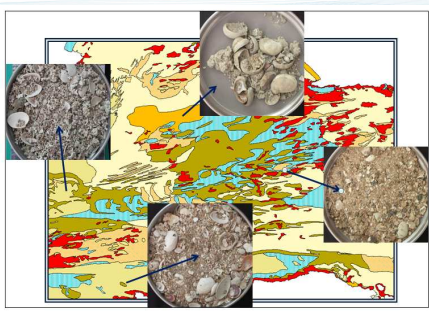
...

As there are already lots of datasets

In numerous universities, research centres...

5th IHO EC meeting, Joint European Programme of Coastal Mapping Oostende 19 February 2014

High variability in coastal areas

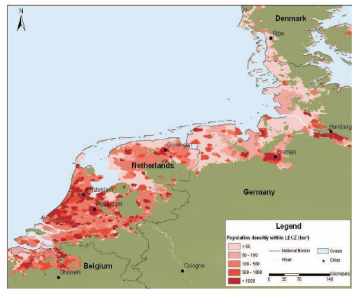


5th IHO EC meeting, Joint European Programme of Coastal Mapping Oostende 19 February 2014

Area to be prioritized ?

Within the seven years
Of the 2014-2020 period
about 10 000 km of a coastline
could be surveyed.

Which area should
be surveyed first ?



Add geology to the relevant work packages

WP1: management and reporting.

WP2: analysis of previous experiences;

WP3: determine the areas in which data are most needed

WP4: write down the specifications for the data:

WP5: analyse the costs and benefits of the options for procurement of Lidar/hyperspectral surveys

WP6: analyse several scenarios for operating management scheme and for high level management scheme.

WP 7: write down a proposal for a subsequent Joint European Coastal Mapping Programme.

Next steps ?

-remarks from HOs to additions regarding
geology JECMaP submission paper

-amended submission paper (taking into account
feedback 3 February) to be sent to DG Mare

- ?