

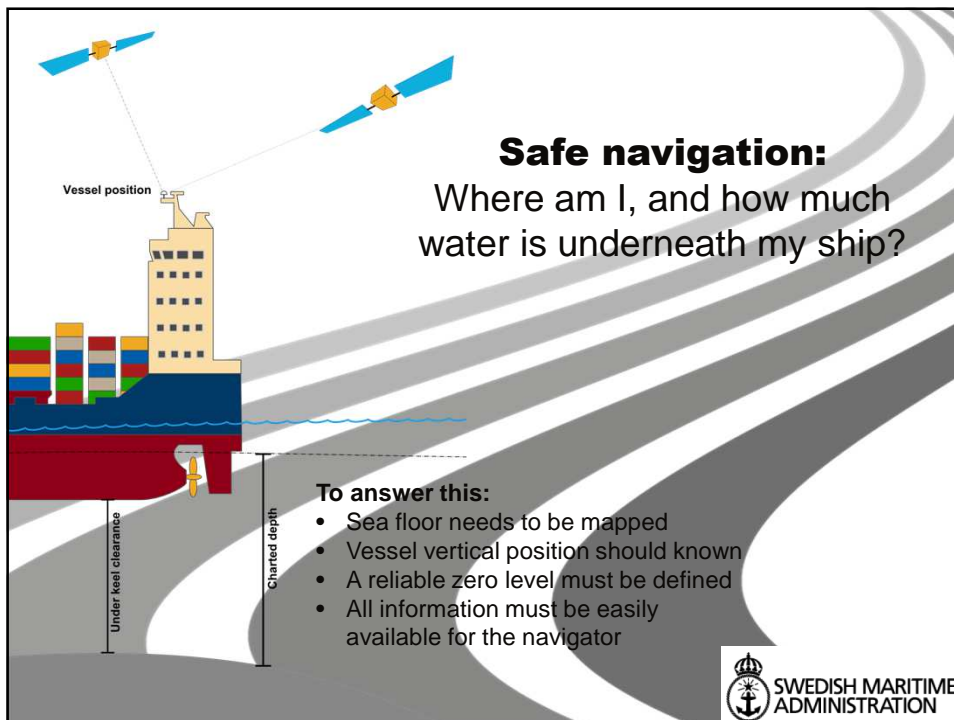


Finalising Surveys for the Baltic Motorways of the Sea

Magnus Wallhagen & Benjamin Hell
Hydrographic Office, Swedish Maritime Administration




SWEDISH MARITIME ADMINISTRATION



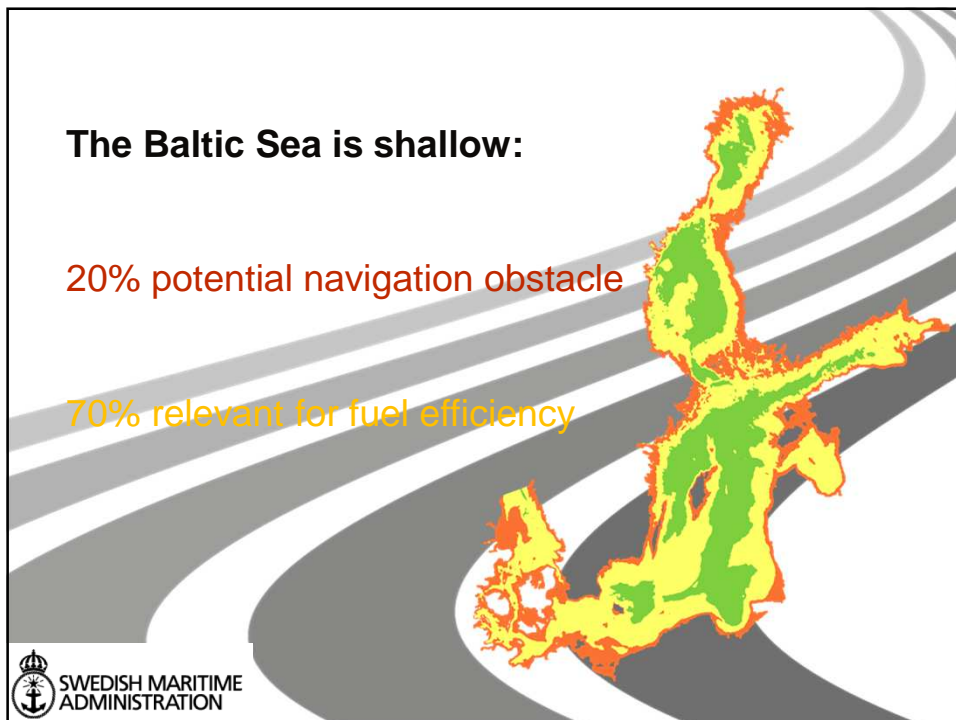
Safe navigation:
Where am I, and how much water is underneath my ship?

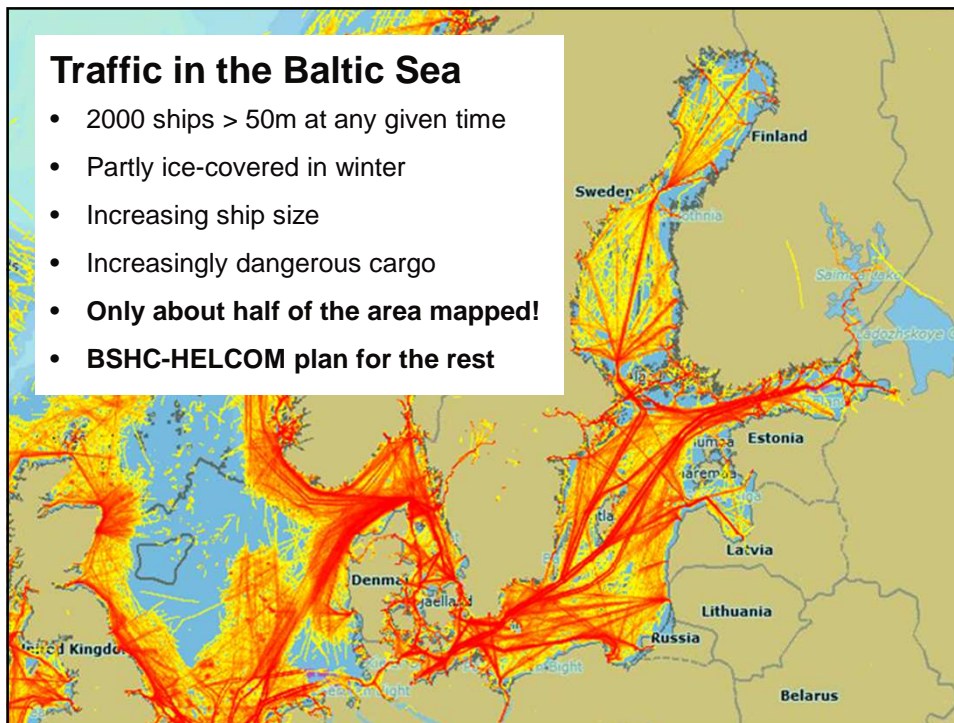
To answer this:

- Sea floor needs to be mapped
- Vessel vertical position should be known
- A reliable zero level must be defined
- All information must be easily available for the navigator




SWEDISH MARITIME ADMINISTRATION





Helsinki Commission



HELCOM Copenhagen Ministerial Declaration


Taking Further Action to Implement the Baltic Sea Action Plan
 - Reaching Good Environmental Status for a healthy Baltic Sea

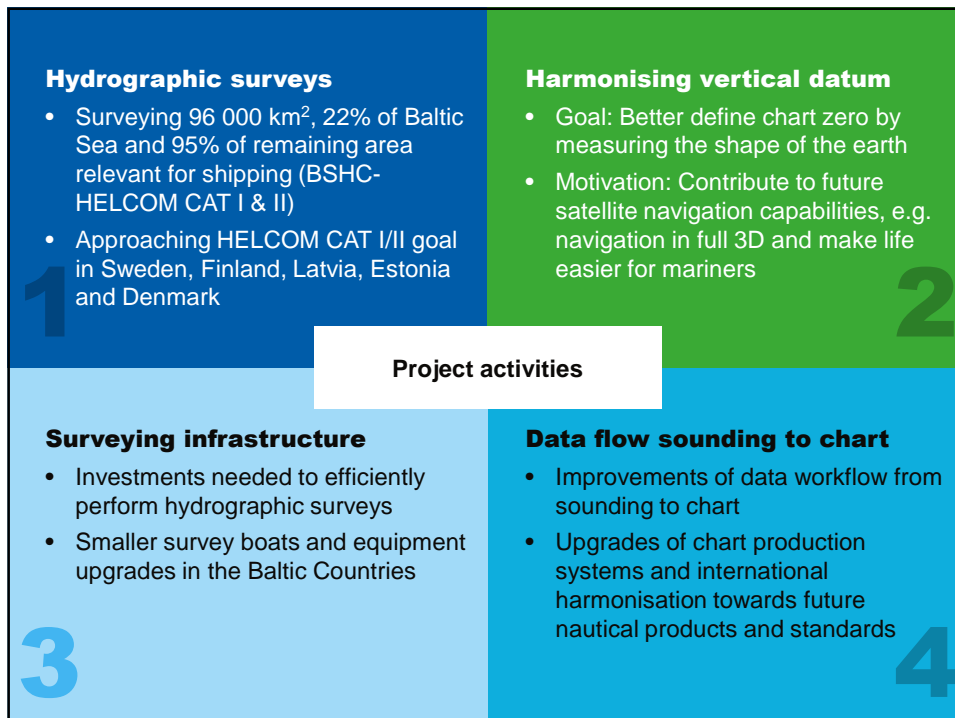
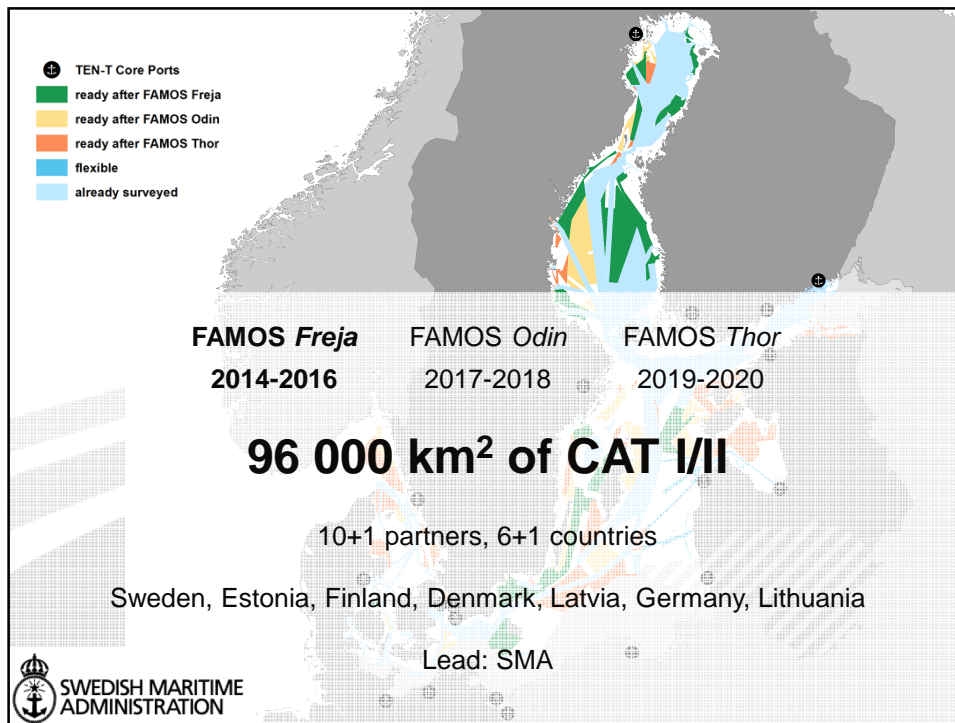
14 (M).RECALLING the HELCOM Copenhagen 2001, Krakow 2007 and Moscow 2010 commitments on hydrographic re-survey and COMMENDING WITH APPRECIATION the substantial progress made in systematic re-surveying of major shipping routes and ports in the region according to the HELCOM-BSHC Re-survey Scheme aimed at ensuring that safety of navigation in the Baltic Sea region is not endangered by inadequate source information;

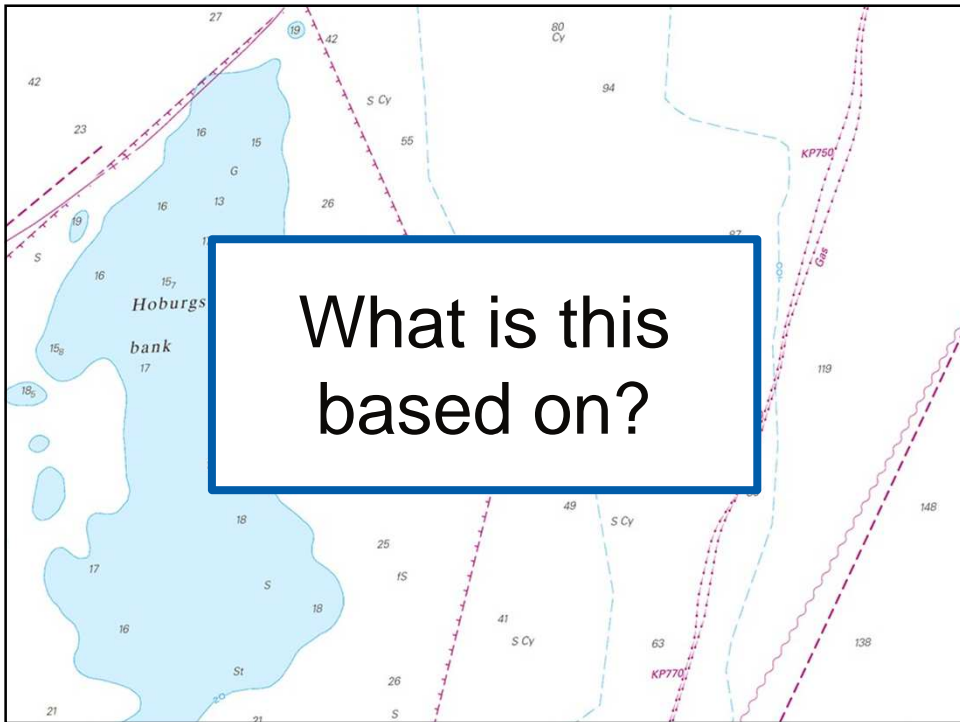
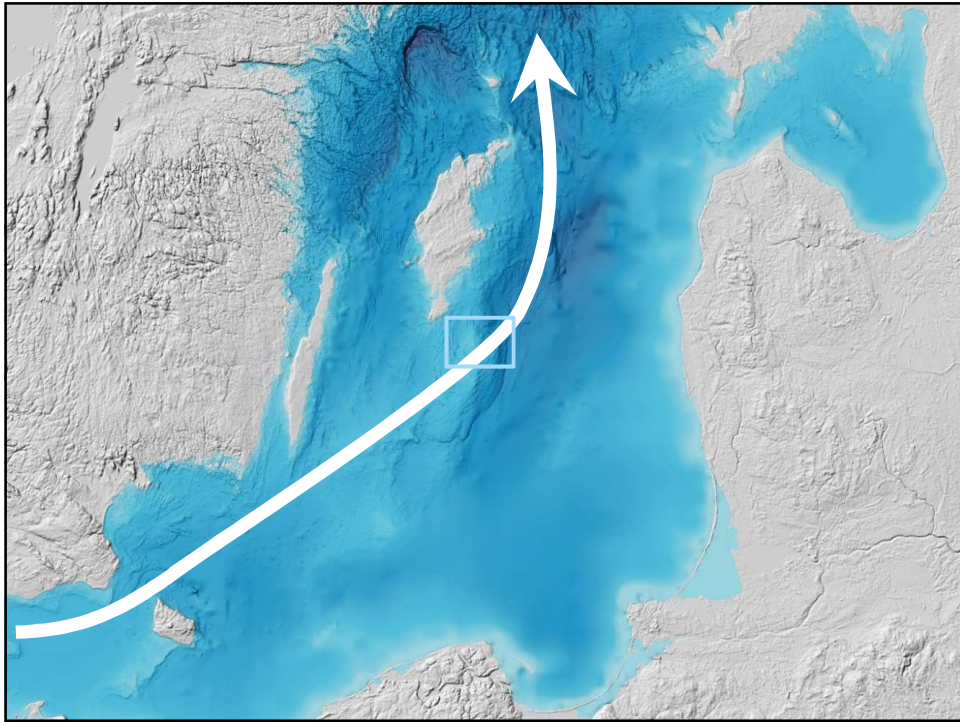
take actions to ensure the completion of the re-surveys for areas used by navigation (CAT I and II) within the time schedules estimated

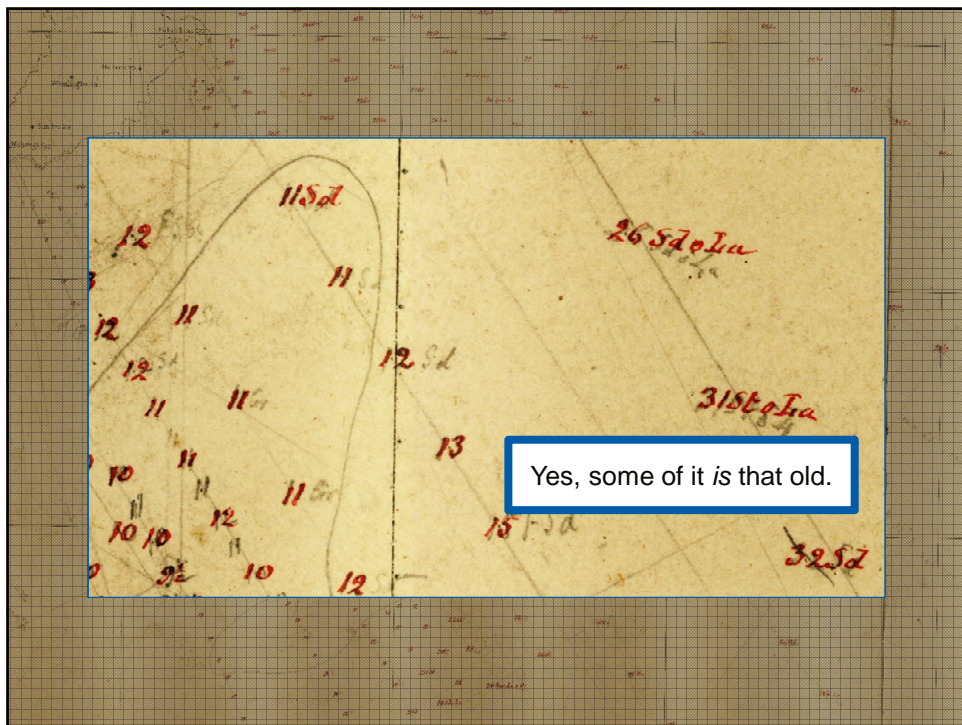
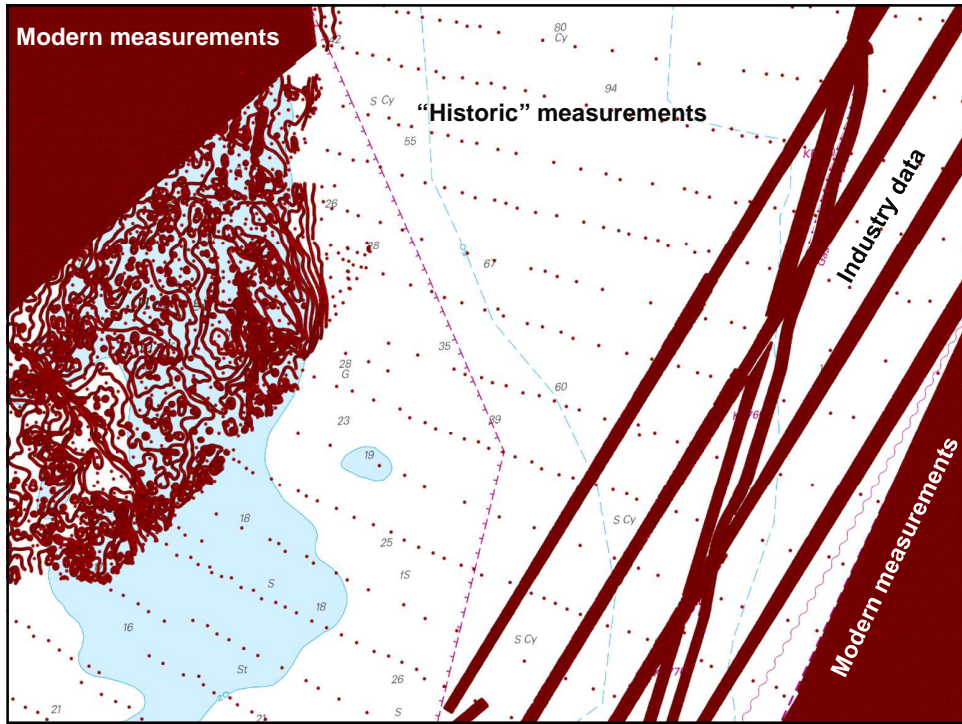
Re-survey Scheme, to promote wider use of accurate and reliable depth information by e.g. developing existing and/or new products including an enhanced and freely accessible Baltic Sea Depth Model, and to foster CAT III re-surveys of other areas not primarily for safety of navigation purposes, e.g. for environmental protection;

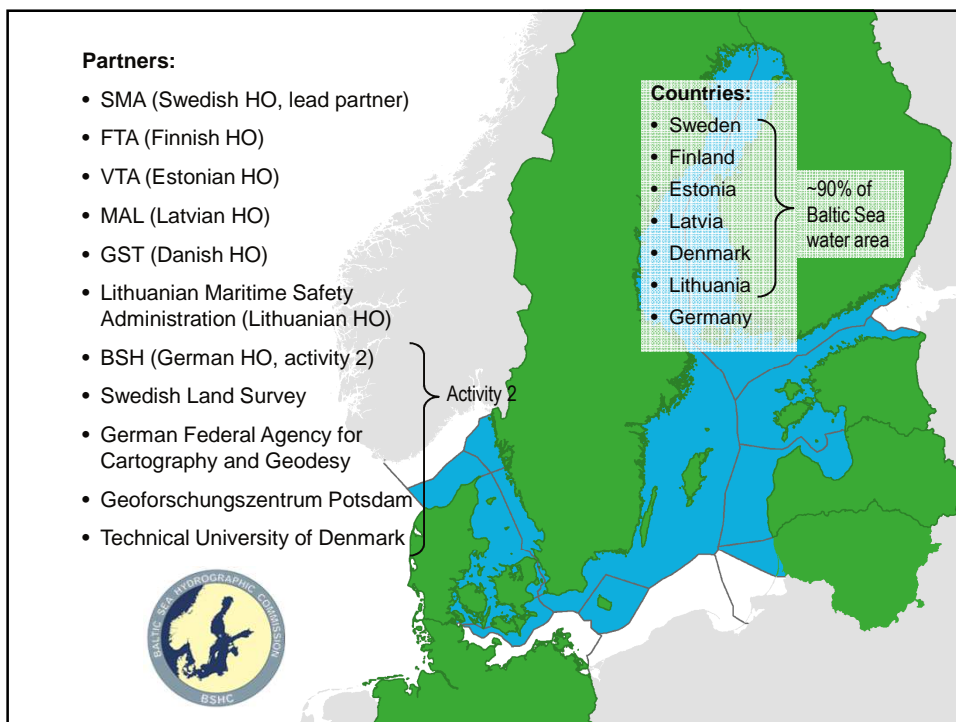
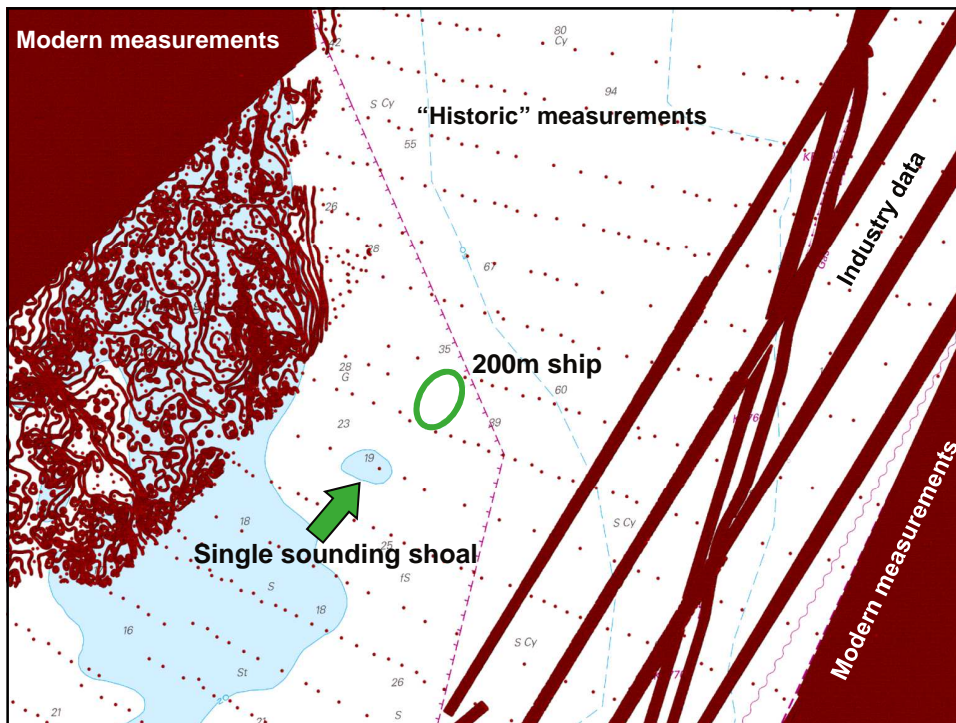
– Baltic Sea environmental ministers, Oct 2013





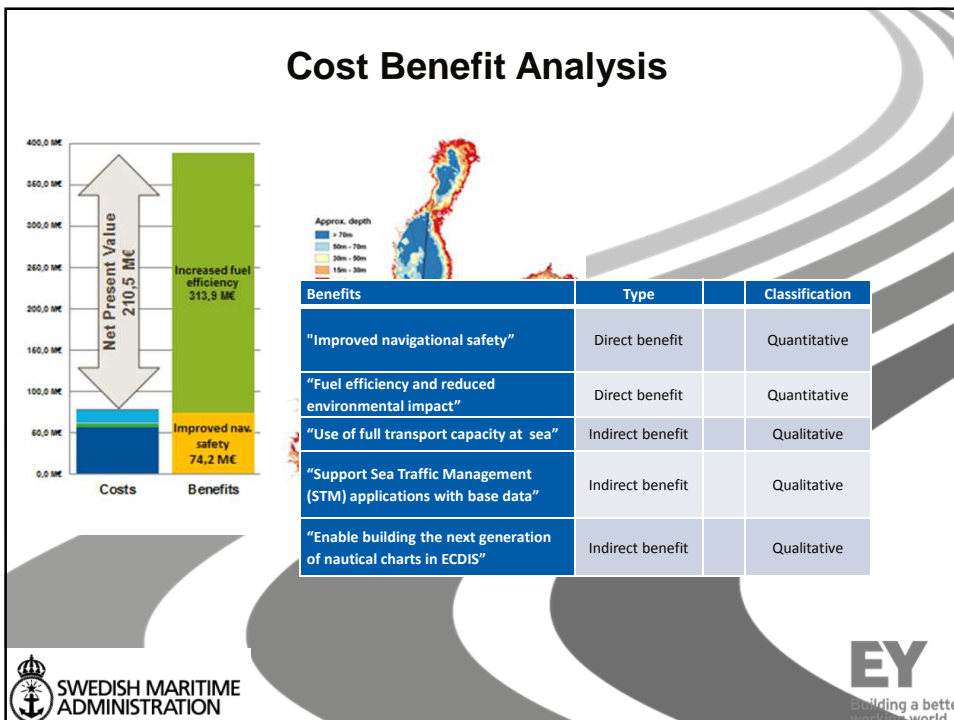






Connecting Europe Facility - Transport

- EU transport infrastructure programme
- Former TEN-T programme
- Total volume 2014-2020: € 26.25 billion (including Cohesion Fund)
- 2014 call for multiannual Motorways of the Sea projects (250+100 M€)
- More calls expected 2015 and 2016





Baltic Sea Bathymetry Database

Deliveries to EMODNET2:

SMA (SE) produced a bathymetry data set from the Baltic Sea Bathymetry Database for the entire* Baltic Sea in co-operation with BSH (DE).

Metadata for the above mentioned dataset.

** BSH made their own delivery over German waters.*

