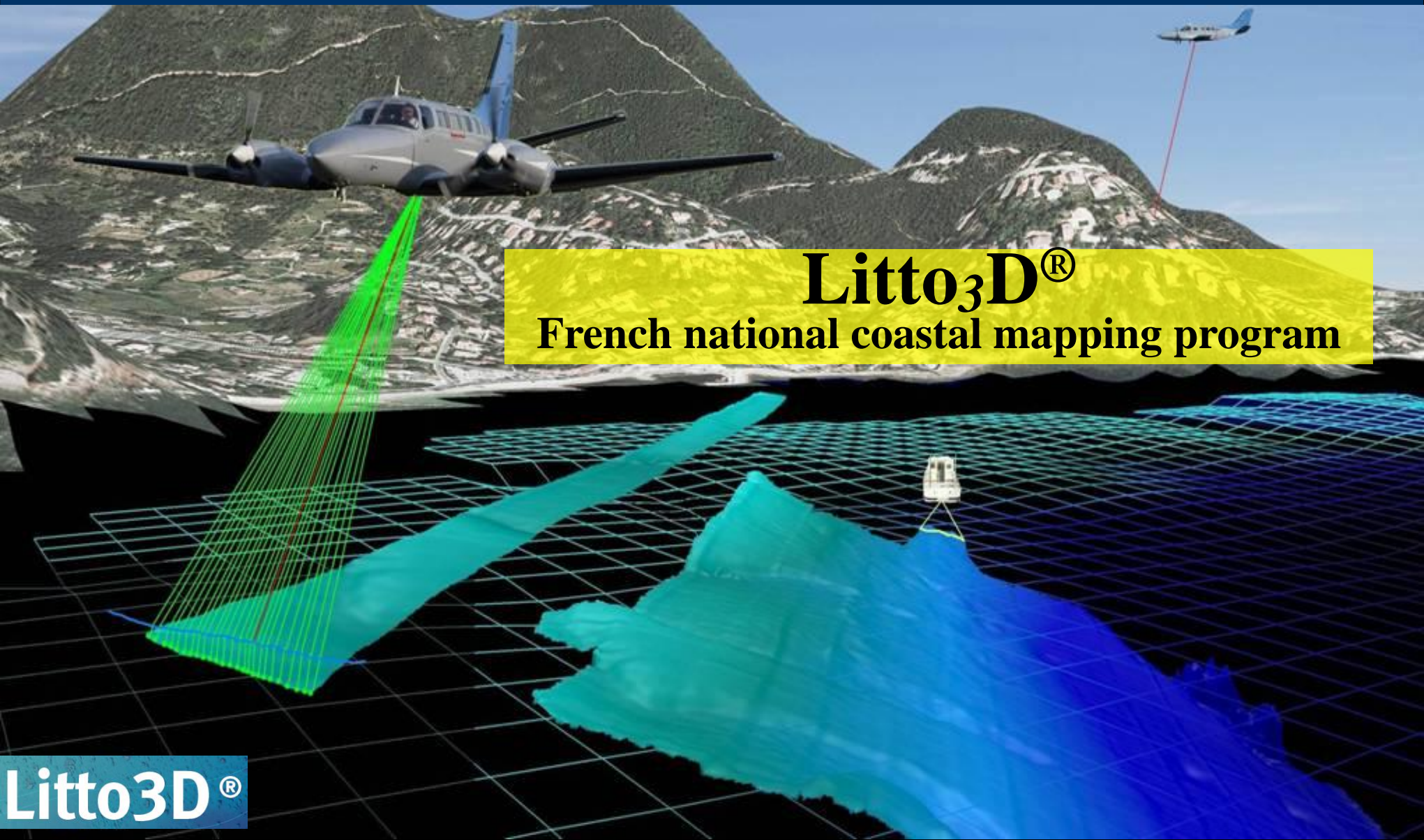




IGN
INSTITUT NATIONAL
DE L'INFORMATION
GÉOGRAPHIQUE
ET FORESTIÈRE



Litto3D[®]
French national coastal mapping program

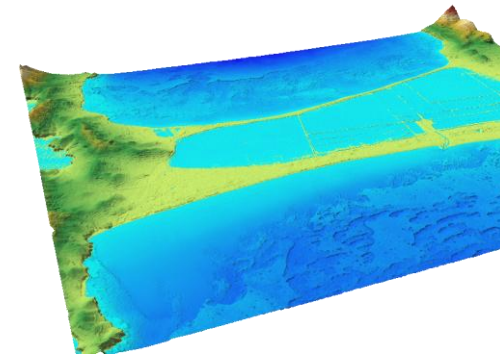
Litto3D[®]

Litto₃D® project

Goal

High-resolution seamless elevation model along French shorelines (metropolitan France & overseas) for coastal zone management, risk prevention, habitat mapping...

Co produced by IGN and SHOM



Area of interest

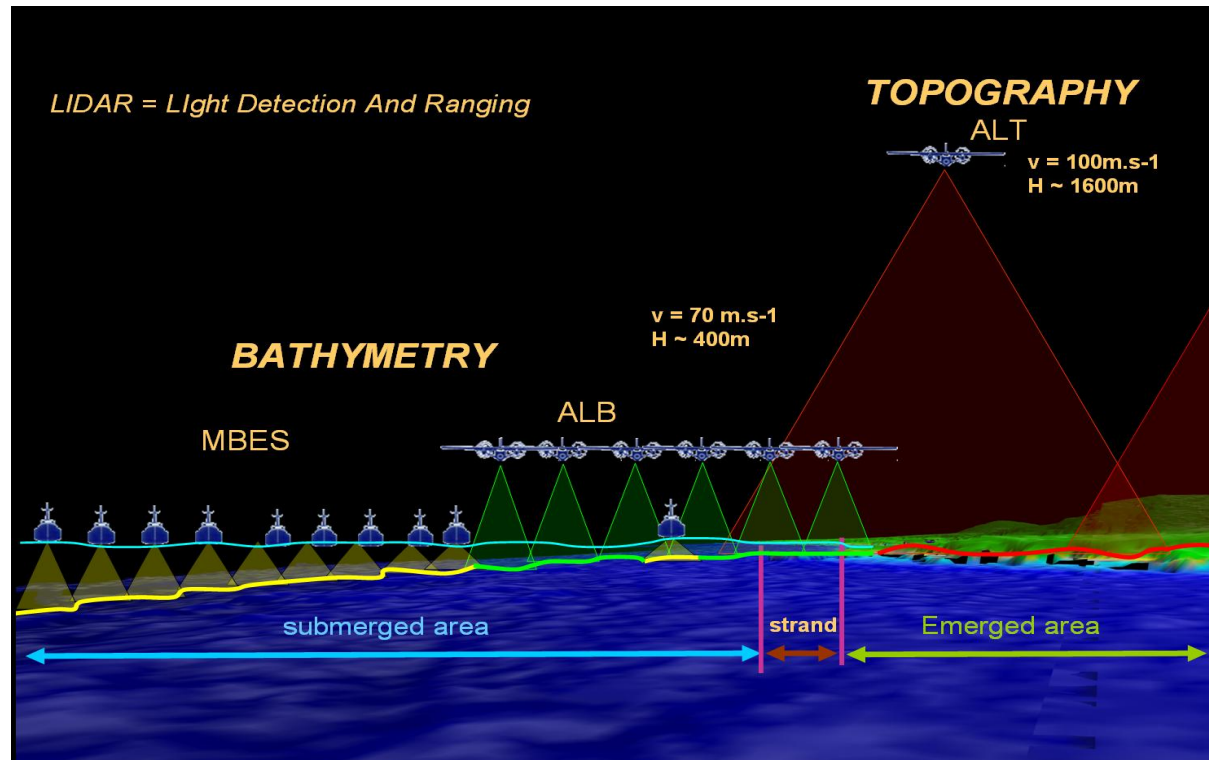
Landwards : up to +10m height and at least 2km inland

Seawards : to the 10m isobaths (or more depending on water clarity)

Litto₃D® project

Historical data irrelevant to build this model

→ Large scale surveys conducted along French coasts using state of the art technologies



Litto₃D® project

SHOM and IGN were appointed to elaborate this seamless altimetric model

Need to establish upstream financing with the Government, local authorities and European Development Fund for each territories

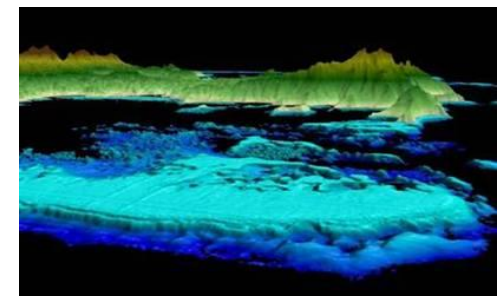
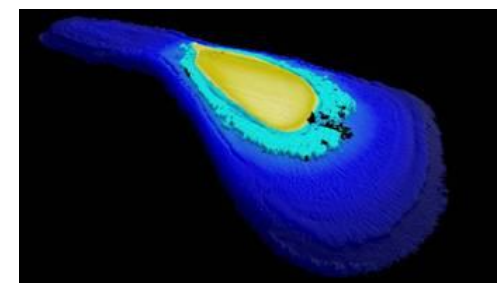
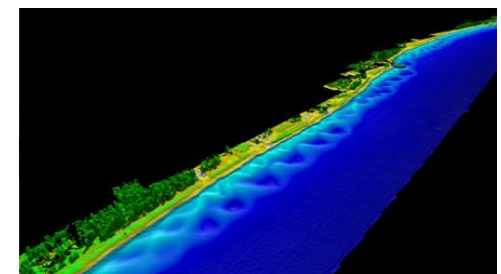
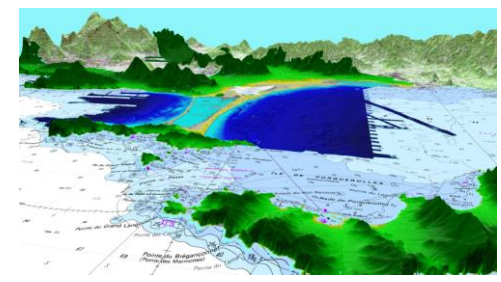
Step by step project, territories by territories

→ SHOM does not own his own LiDAR capability
Surveys subcontracted for each partnership

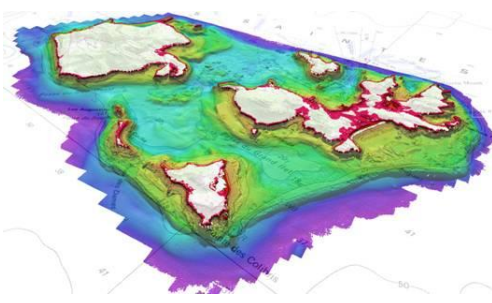
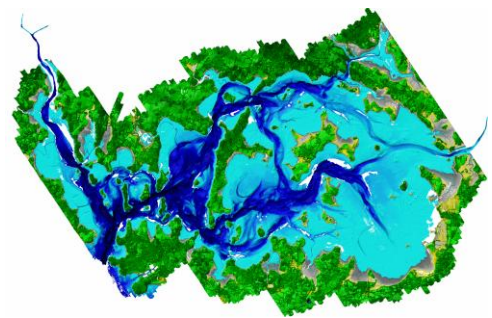
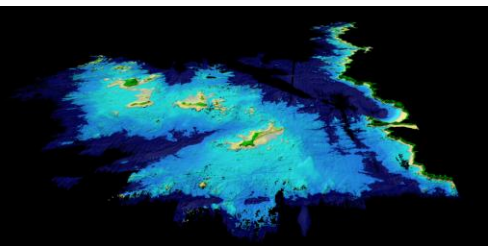


Surveys to meet IHO Order 1B

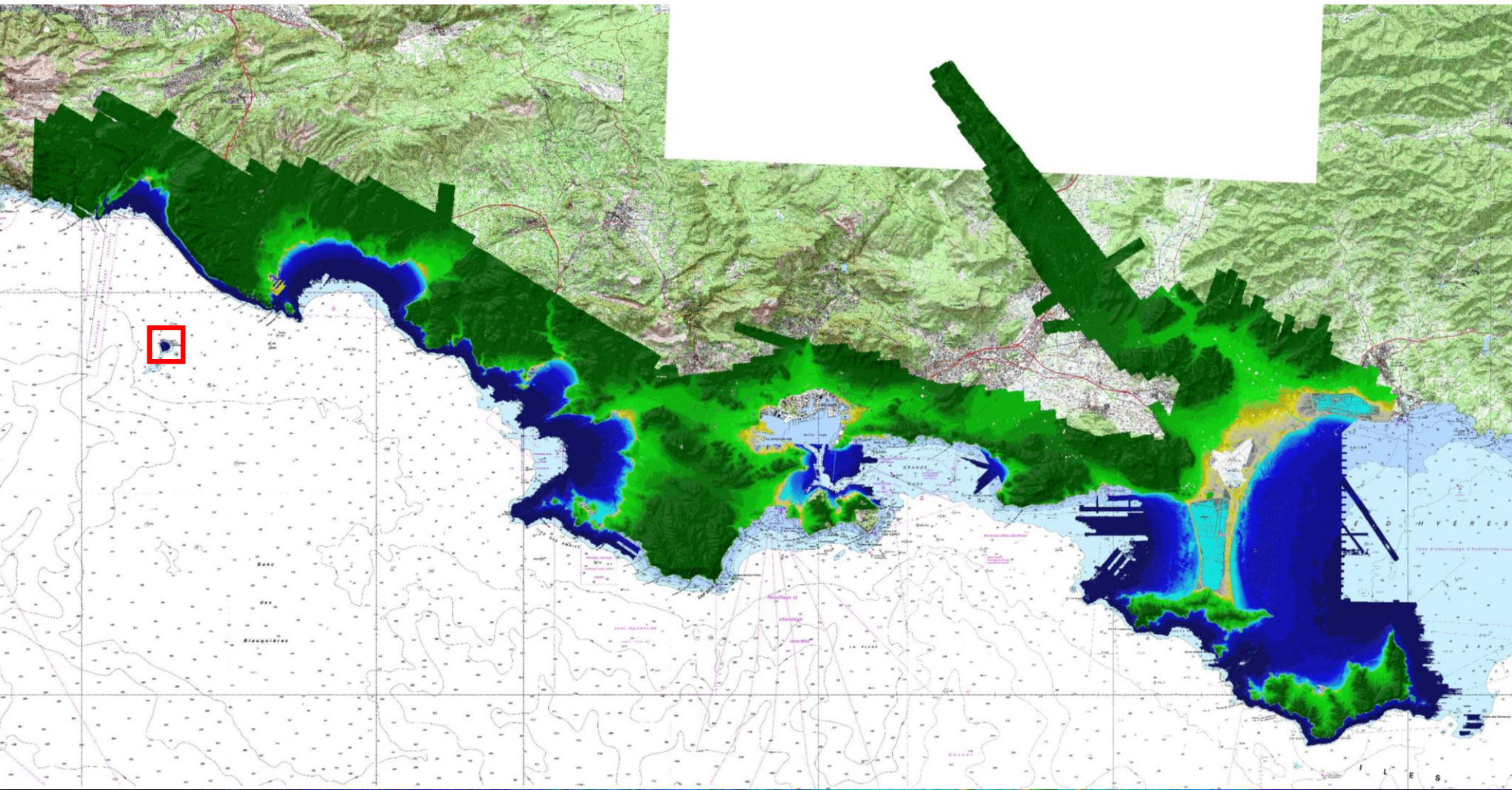
Litto3D®



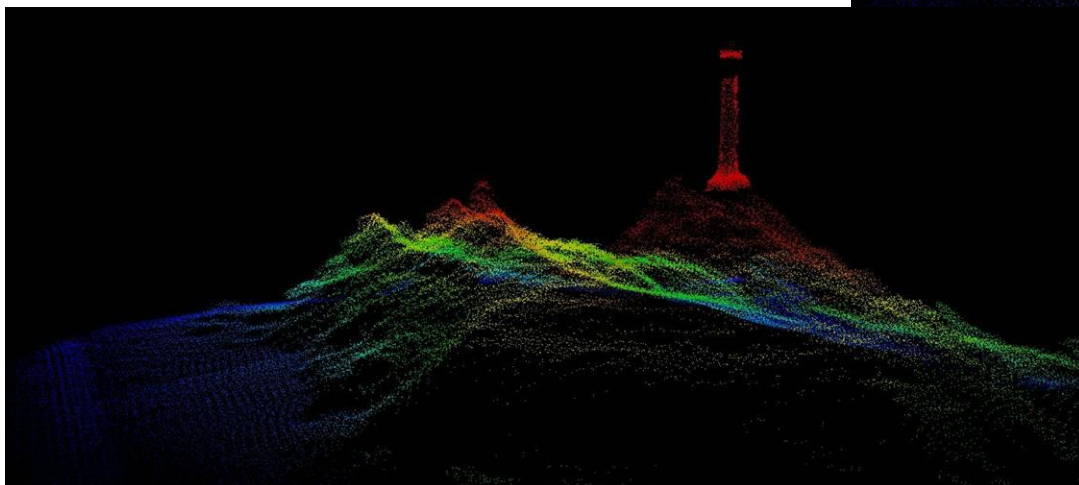
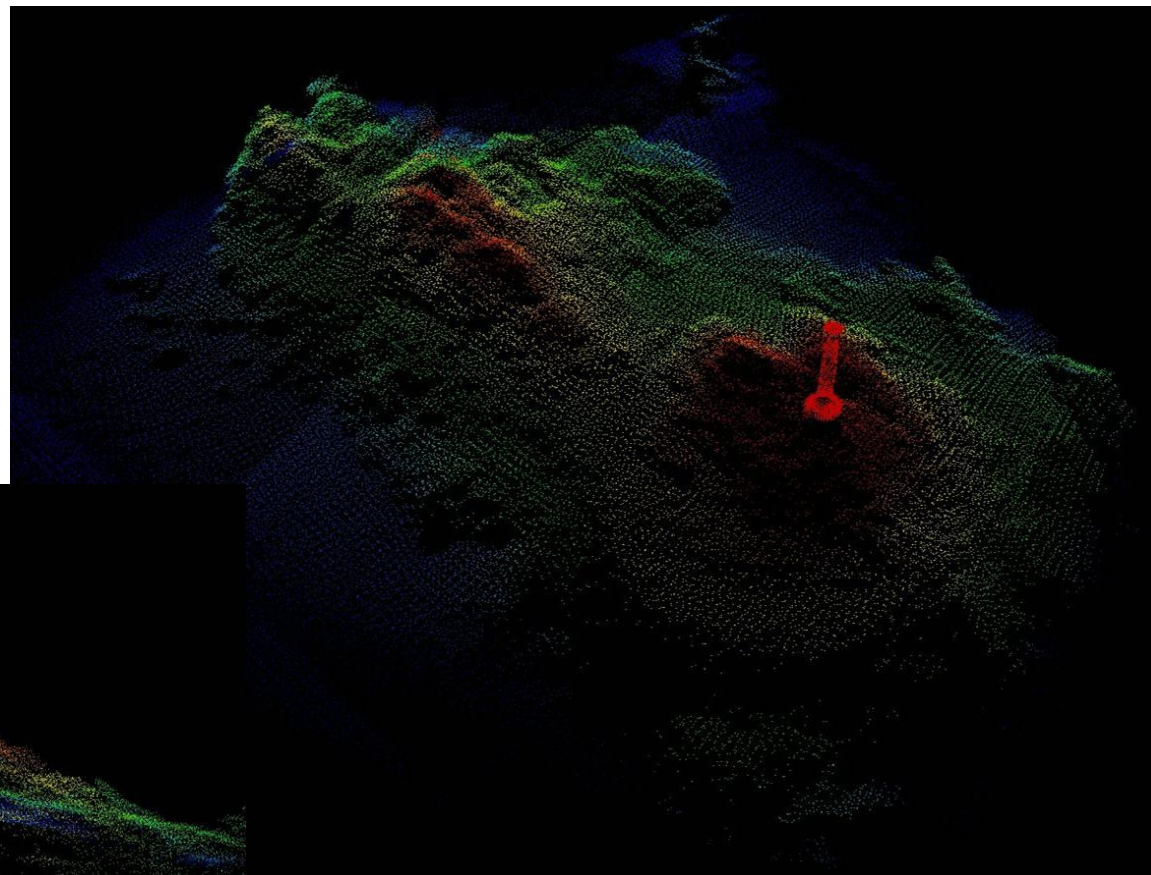
14 surveys since 2005...



Litto3D® - Mediterranean dataset



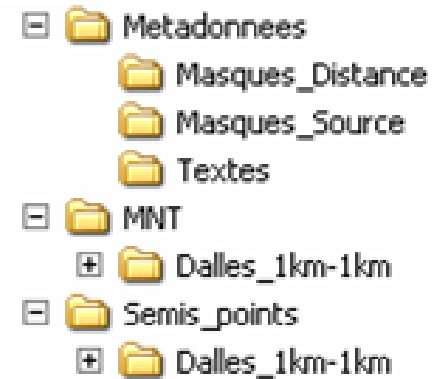
Litto₃D® - Mediterranean dataset



Litto₃D[®] - Products

Products specification :

- *1 * 1 km tiles*
- *6 files available for each tile :*
 - *Full resolution point cloud (.las)*
 - *1m and 5m meshed bare earth DTM and quality masks (source & distance)*
 - *Metadata*
- *Projected coordinates and legal altimetric system (IGN69 in France mainland)*



Litto3D[®] products freely available : free user rights and free distribution of Litto3D[®] data (Open licence Etalab www.etalab.gouv.fr)



Thank you

Questions ?

litto3d@shom.fr