




BUNDESAMT FÜR
SEESCHIFFFAHRT
UND
HYDROGRAPHIE

NSHC Bathymetry Database

09 June 2015

Thomas Dehling

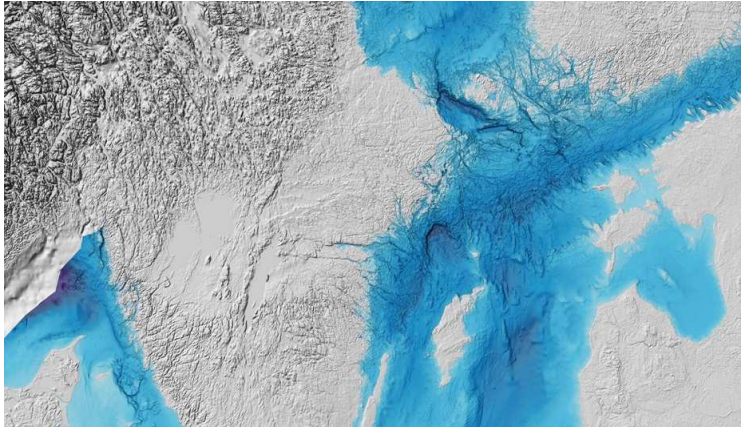


BUNDESAMT FÜR
SEESCHIFFFAHRT
UND
HYDROGRAPHIE

NSHC Resurvey Database


Setup of an internet service comparable to the BSHC realization of the current bathymetric data of NSHC MS.

- Data inquiry
- Visualization
- Download



12.06.2015

NSHC Bathymetric Database

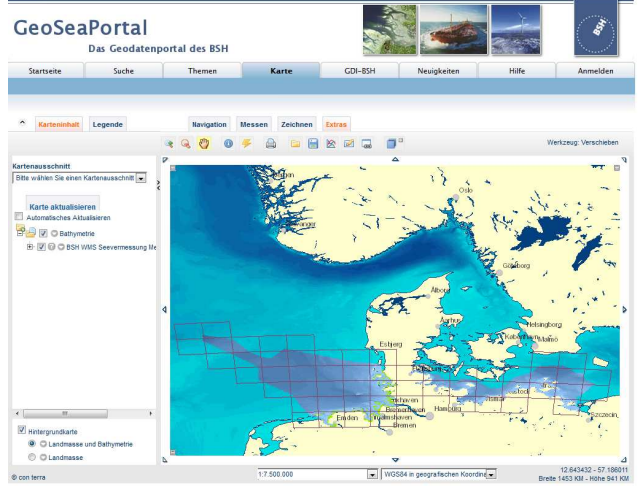


NSHC Resurvey Database



Realization is planned in 2015 in a preliminary version (visualization).

It is intended to use the internal BSH Geoportal (SDI) based on ESRI software. This will allow BSH to host the service easily. External solution would need more resources and a programming environment.



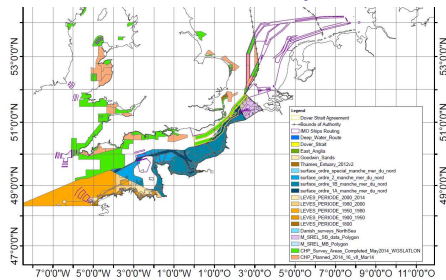
12.06.2015

NSHC Bathymetric Database

Planned developments



- Analysis of the BSBD Service, scope of services, layout and complexity;
- Transfer into BSH SDI technology
 - either using the BSHC software (if permitted and feasible)
 - or assessment of programming needs
- Definition of simple formats for geodata and metadata to be delivered by NSHC MS. Alternatively use of the formats in BSBD;



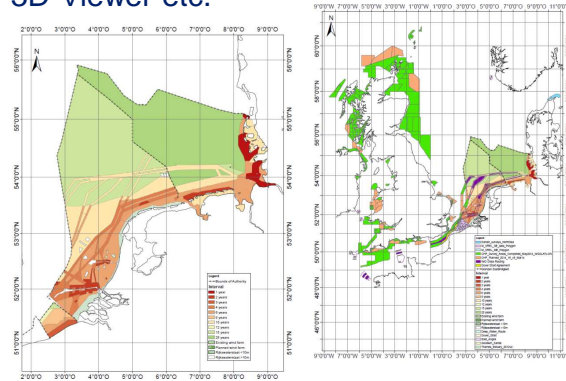
12.06.2015

NSHC Bathymetric Database

Planned developments



- Transformation of the existing NSHC Resurvey WG shapes into a WMS service;
- adapt „look and feel“, amend new functions and presentations according to the EMODNet bathymetry service, integration of automatic update services, 3D-Viewer etc.



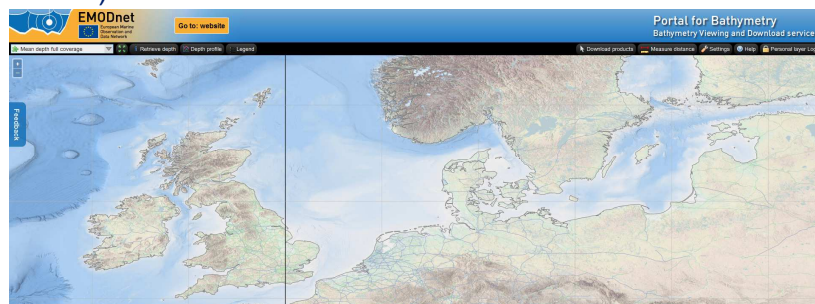
12.06.2015

NSHC Bathymetric Database

Planned data format



- geodetic reference system: ETRS 89 geogr. or UTM 31 , height: LAT
- geodata in raster format, possibly between 50 and 500 m
- metadata: date of survey, ownership, resolution, surveying technique, enfolded polygon
- adjustment to other projects if necessary (Coastal Mapping, Emodnet)



12.06.2015

NSHC Bathymetric Database