

# EU Funding Opportunities Coastal Bathymetric Acquisition



**Magnus Wallhagen**  
**Head of Production,**  
**Hydrographic Office**



# SMA Projects with Bathymetric Acquisition



*Surveying for 2nd WW  
dumping site*



*Surveying for safe and efficient routes  
for seagoing public transport in  
Stockholm and Åland archipelago*

## ***The Iron Ore Port – Luleå Malmporten***

*Increased depth to Baltic Sea max in Bay of Bothnia - Luleå*



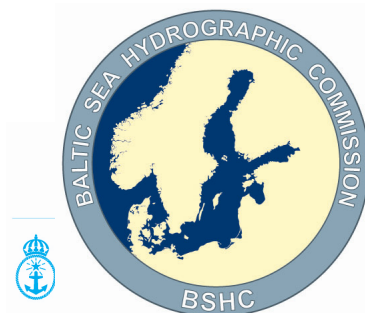
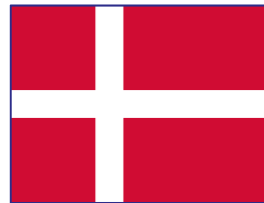
*Surveying for future navigation – Safety, Efficiency and Accuracy*



# A Historical Mapping of the Baltic Sea

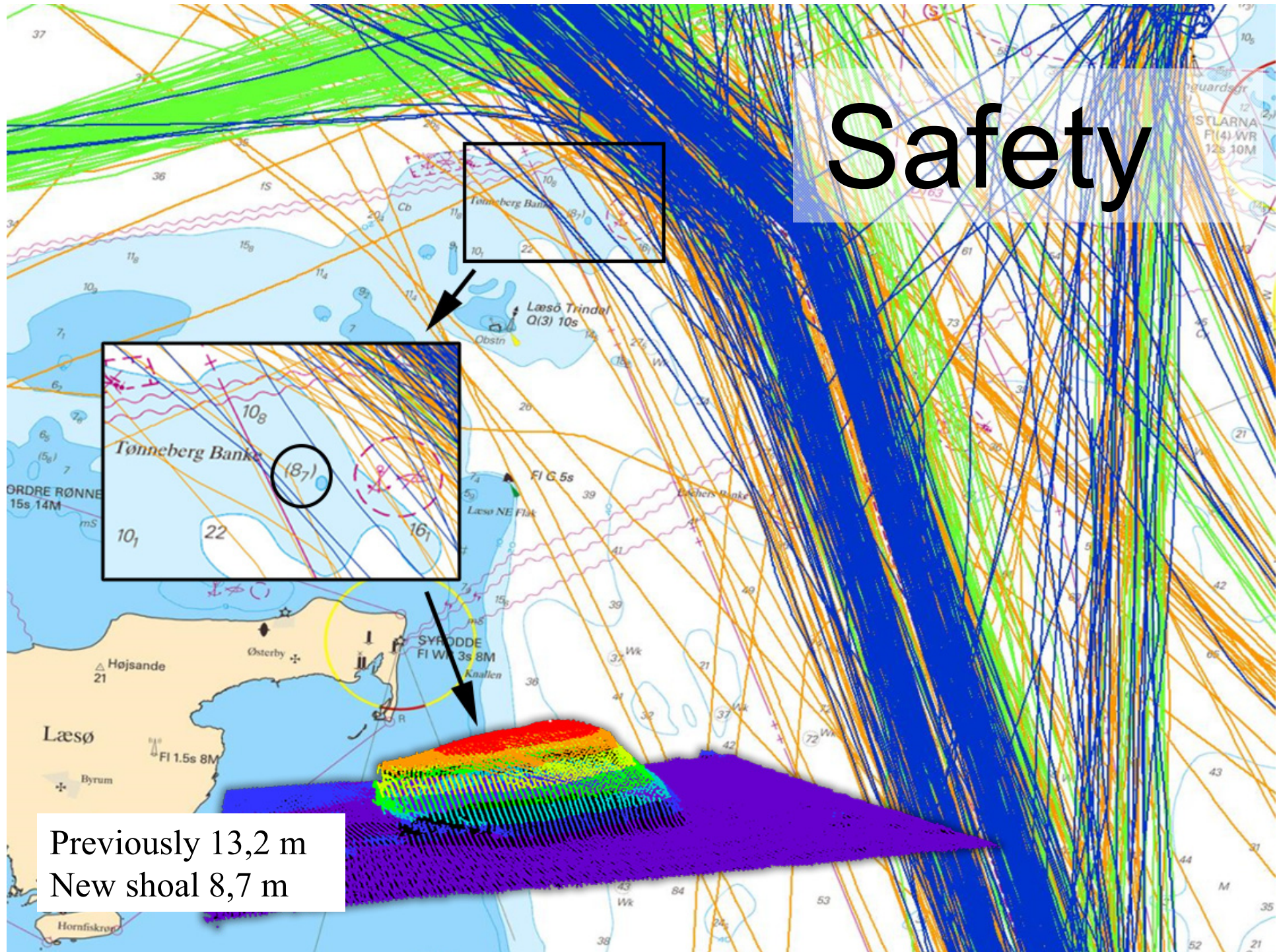


Co-financed by the European Union  
Connecting Europe Facility



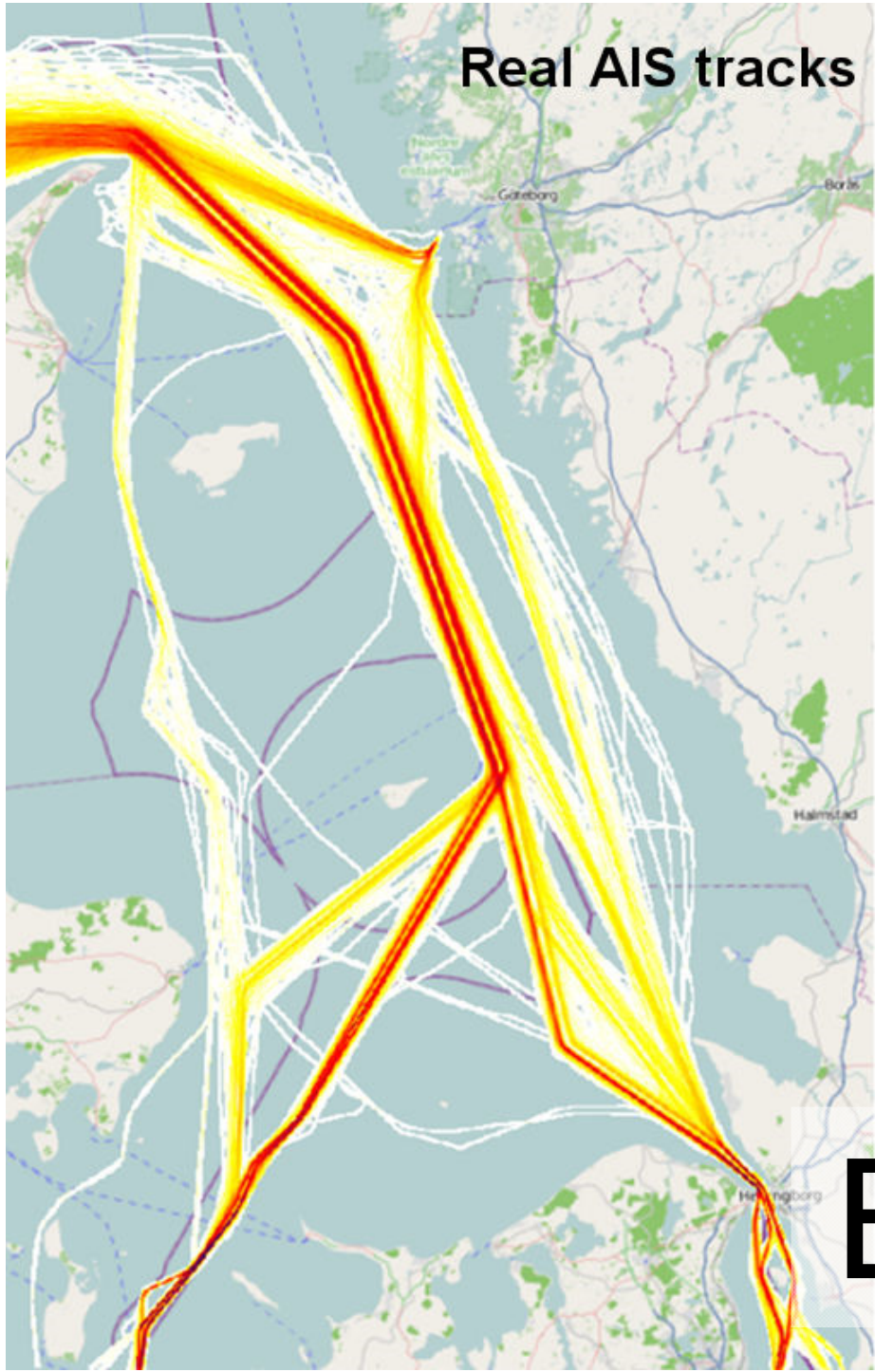


# Safety

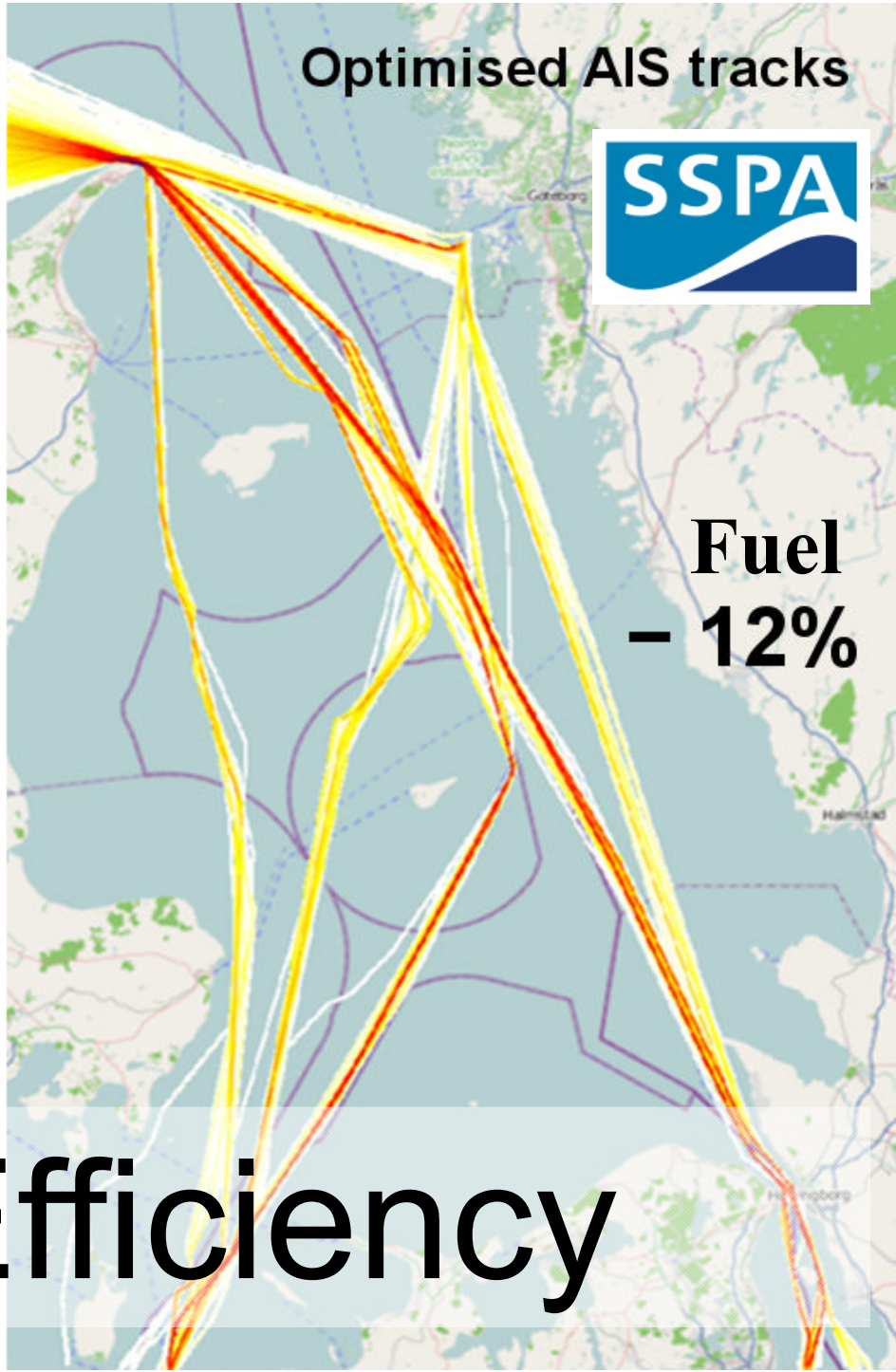




**Real AIS tracks**



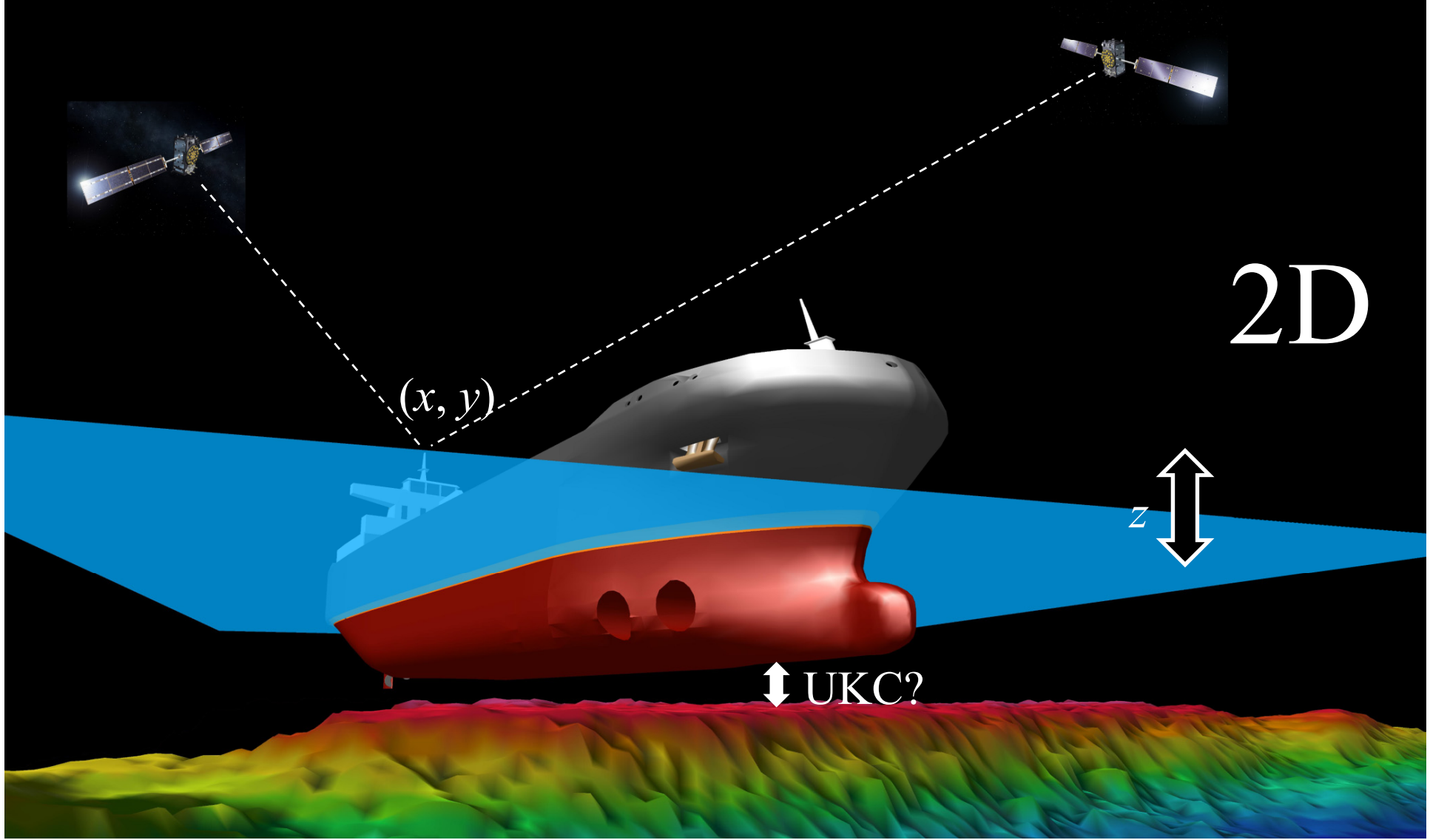
**Optimised AIS tracks**



**Fuel  
- 12%**

**Efficiency**

# Accuracy



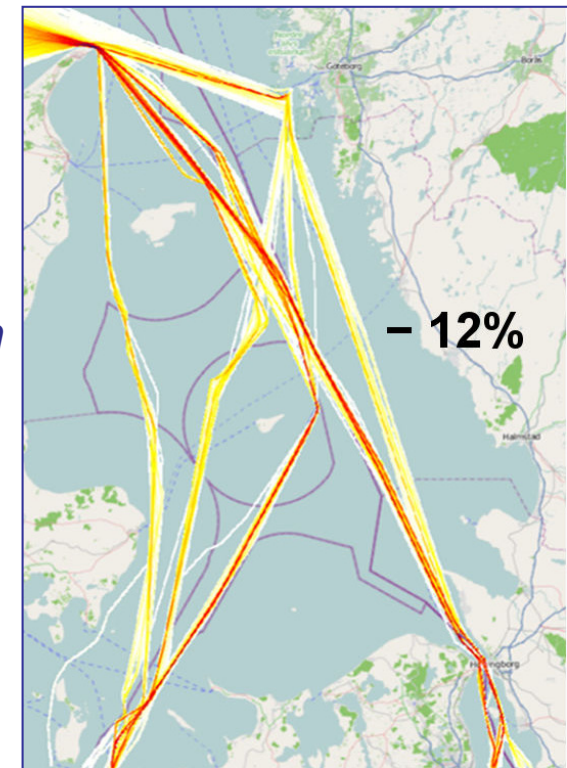


# Bathymetric Acquisition – not just for shipping

*Reliable bathymetry provides  
basic knowledge for  
Blue Growth:*

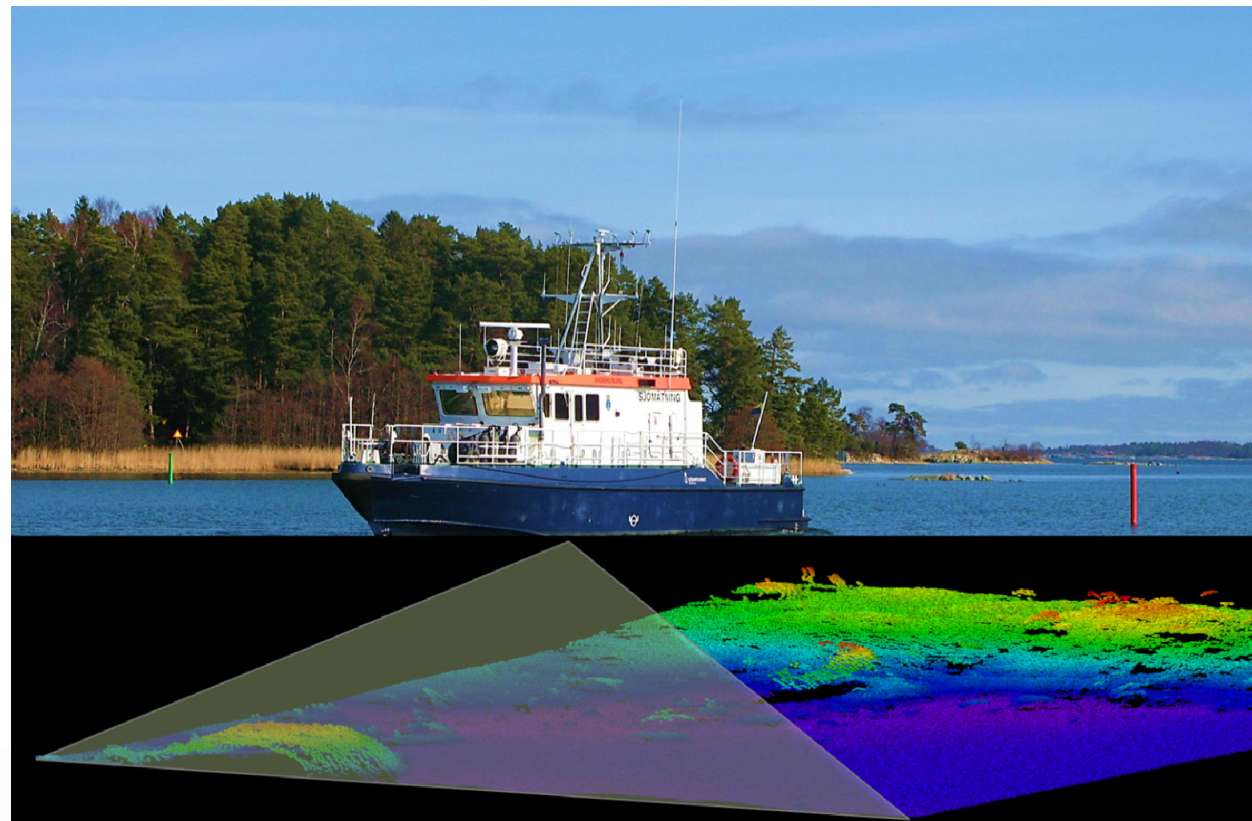


- *Environmental mapping*
- *Environmental protection*
- *Marine spatial planning*
- *Climate change actions;  
protection, flooding prediction*
- *Efficient shipping*
- *Tourism*
- *Cultural heritage*
- *Energy at sea;  
wind and wave*
- *Fishing*
- *Marine farms*
- *Exploitation*
- *Services developed by  
SMEs – job creation*



# ADAPT

Assuring Depth of fairways for  
Archipelago Public Transportation





## Partners:

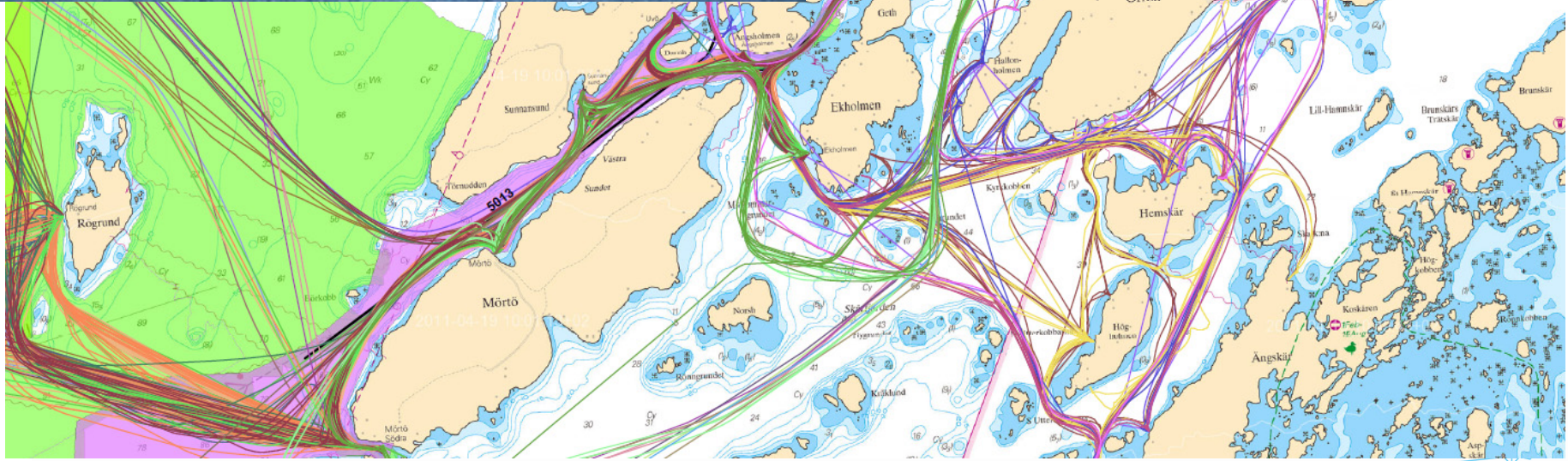
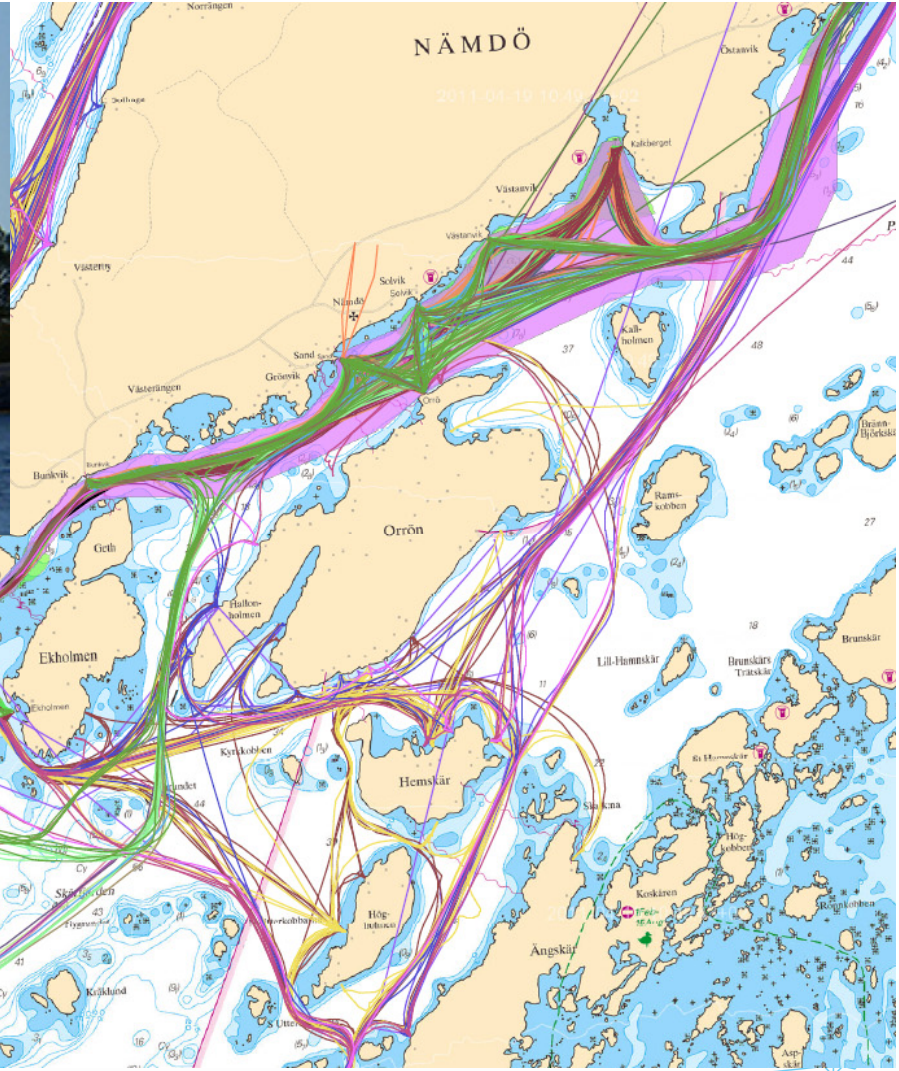
## *Maritime partnership*

- SMA (lead partner)
- Stockholm County Council
- Government of Åland

The objective is to improve the safety of navigation for the regular public transportation sector in the archipelagos of Stockholm and Åland by surveys and improved charts. Another objective is improvement in regards to route planning and find possibilities for reduced fuel consumption.



# Public transportation routes - example





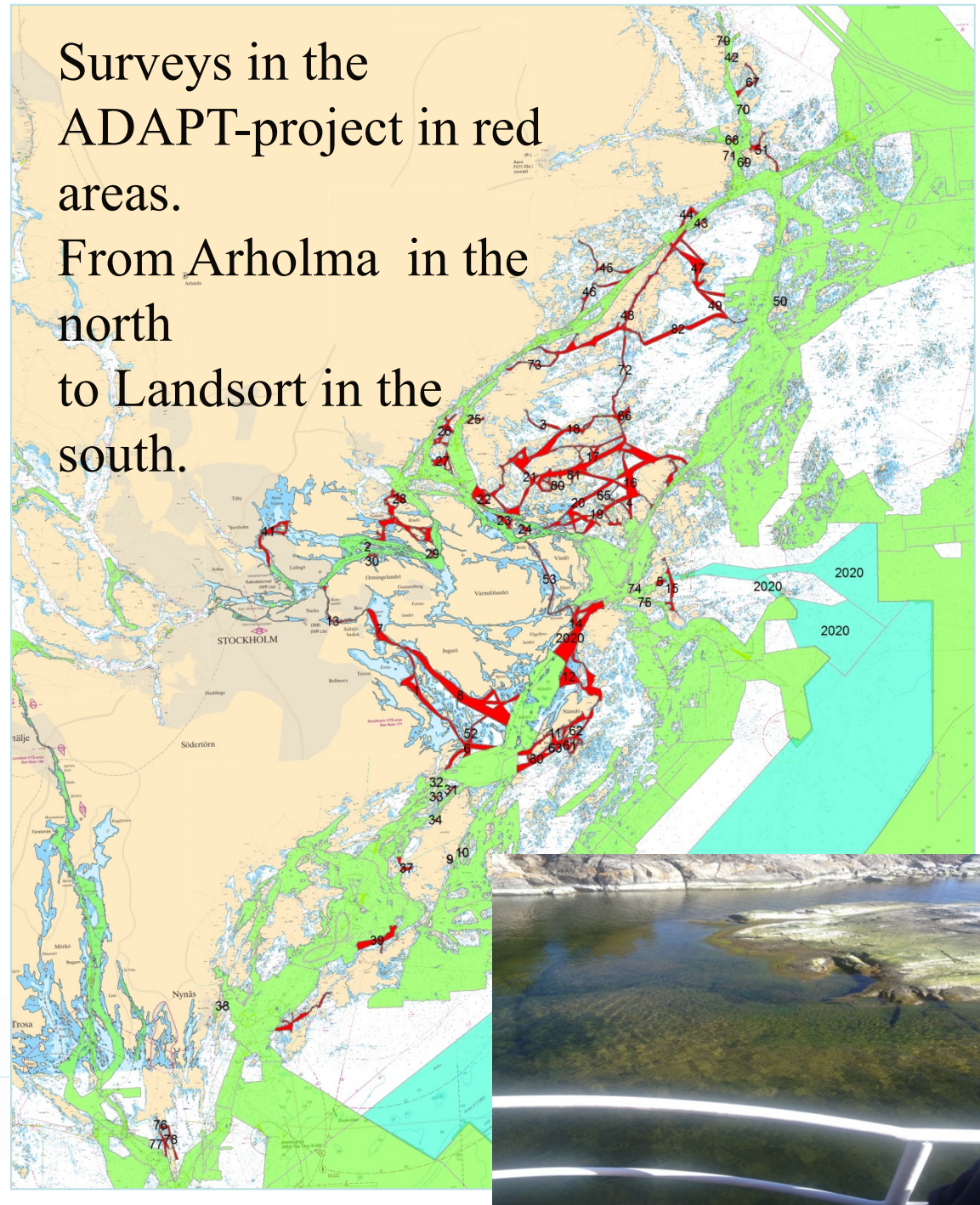
# Survey, data processing and chart production

Cost: 1,2 M Euro  
75 % co-finance from Interreg  
25 % financed by Stockholm County Council  
Area: 176 km<sup>2</sup>  
Surveying: 2016 – 2017  
Chart update: 2018



Surveys in the ADAPT-project in red areas.

From Arholma in the north to Landsort in the south.



# Obstacles in existing Funding Programmes

- **Hydrographic Surveying (improved seabed surveys) is only mentioned in the CEF Motorways of the Seas programme.**
- **You need to be very innovative in order to get a hydrographic surveying project approved**
- **Hydrographic Surveying is needed for many different stakeholders – There is no overall funding programme for mapping**

*EU is spending for funds on space projects then mapping its own coastal waters?*

