

EU Funding Opportunities Coastal Bathymetric Acquisition



Magnus Wallhagen
Head of Production,
Hydrographic Office



SMA Projects with Bathymetric Acquisition



*Surveying for 2nd WW
dumping site*



*Surveying for safe and efficient routes
for seagoing public transport in
Stockholm and Åland archipelago*

The Iron Ore Port – Luleå Malmporten

Increased depth to Baltic Sea max in Bay of Bothnia - Luleå



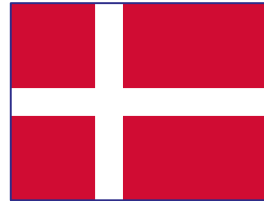
Surveying for future navigation – Safety, Efficiency and Accuracy



A Historical Mapping of the Baltic Sea



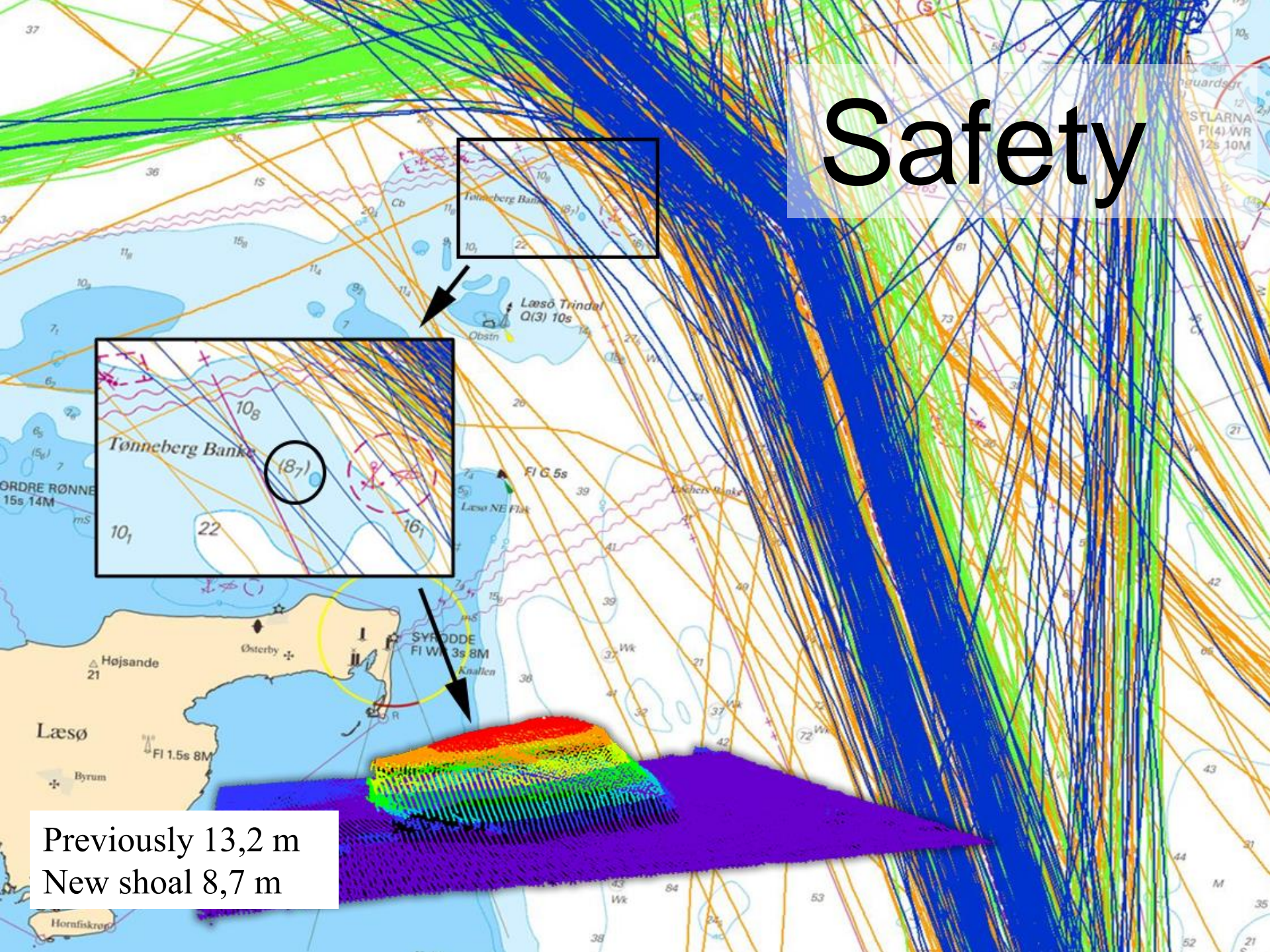
Co-financed by the European Union
Connecting Europe Facility



EUSBSR
EU STRATEGY
FOR THE BALTIC
SEA REGION



Safety

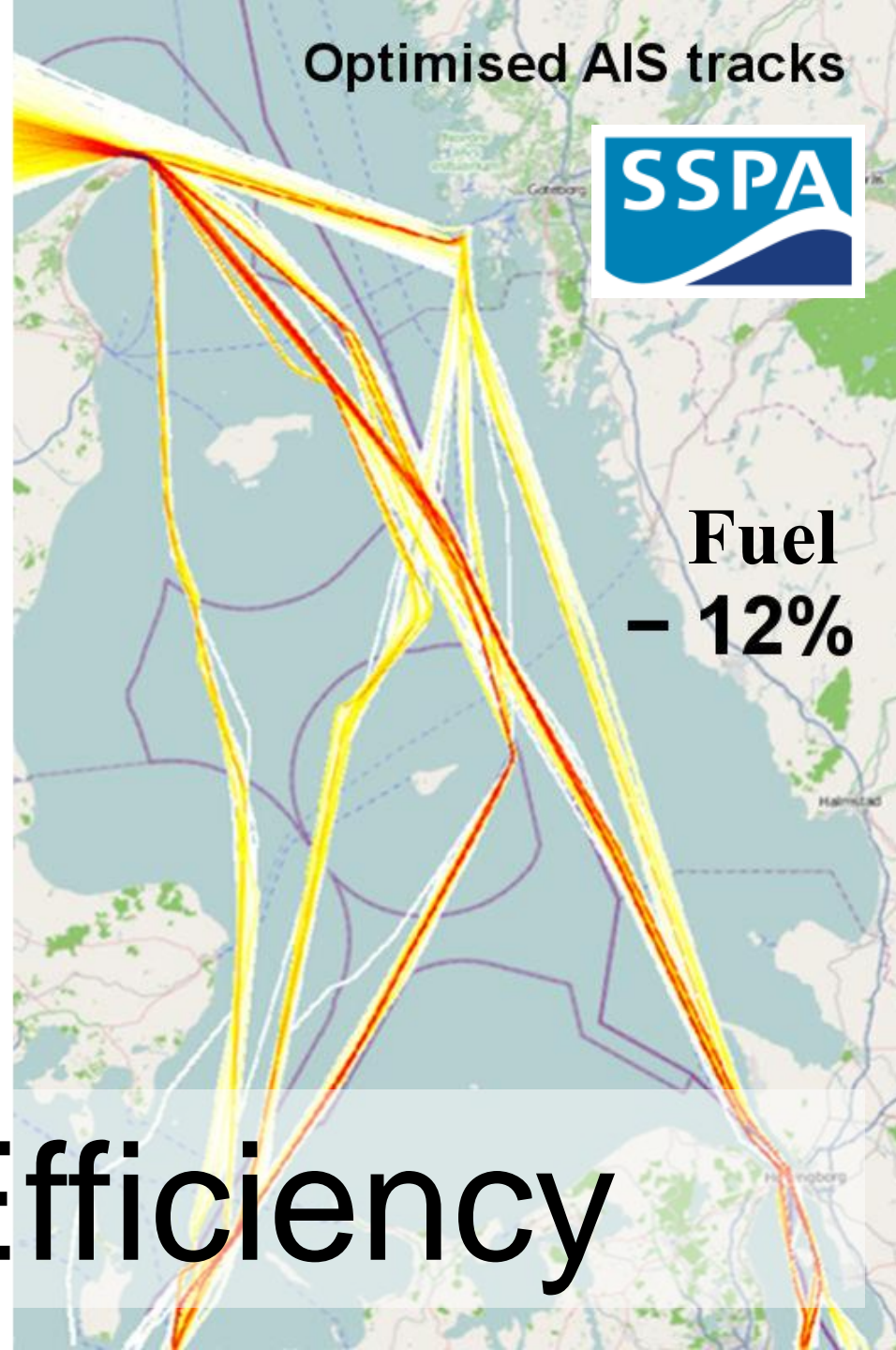


Previously 13,2 m
New shoal 8,7 m

Real AIS tracks



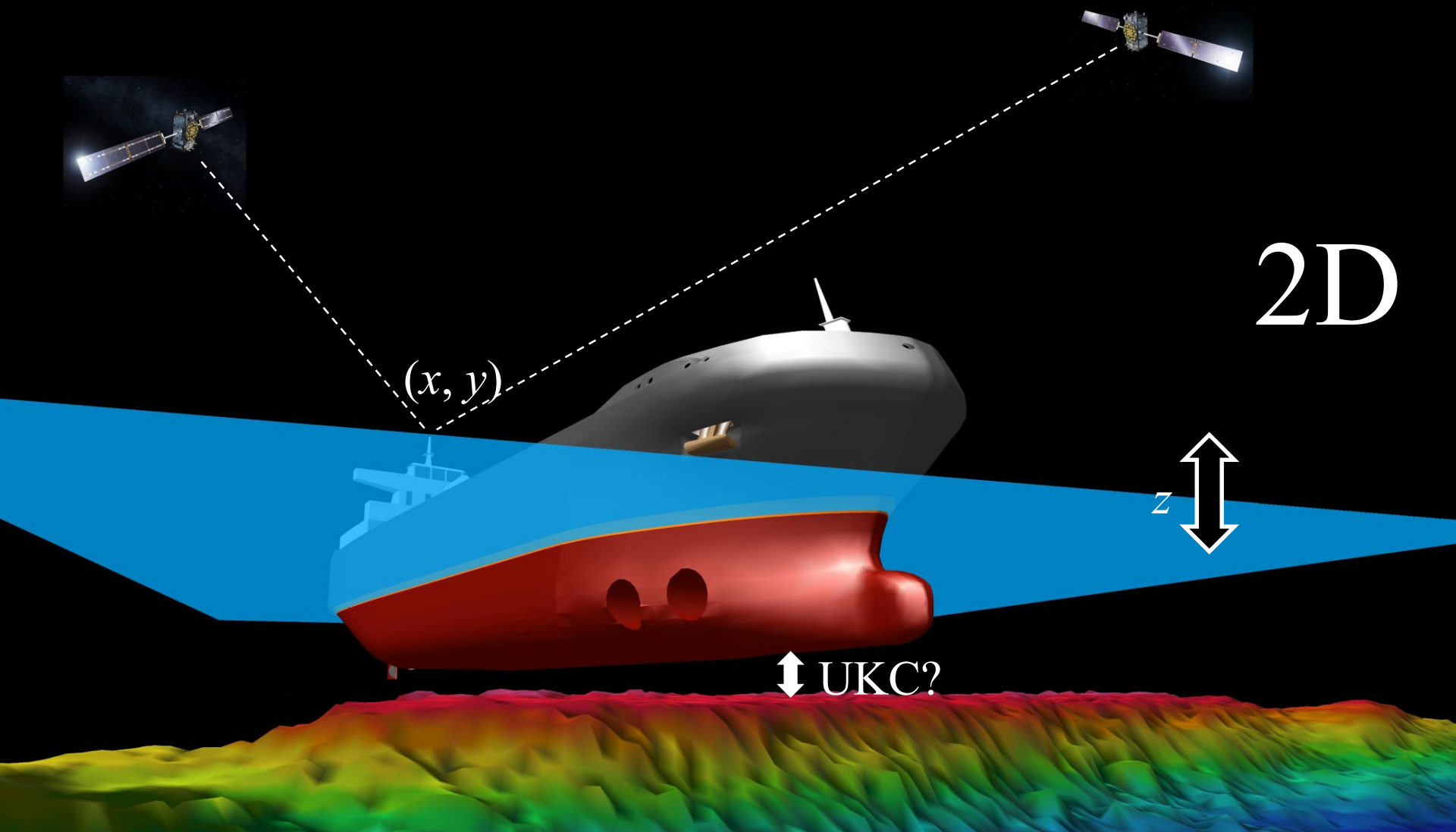
Optimised AIS tracks



**Fuel
- 12%**

Efficiency

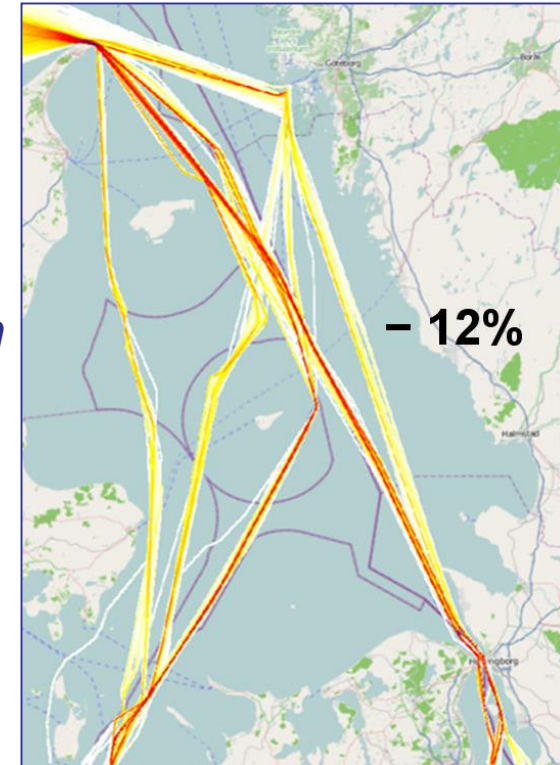
Accuracy



Bathymetric Acquisition – not just for shipping

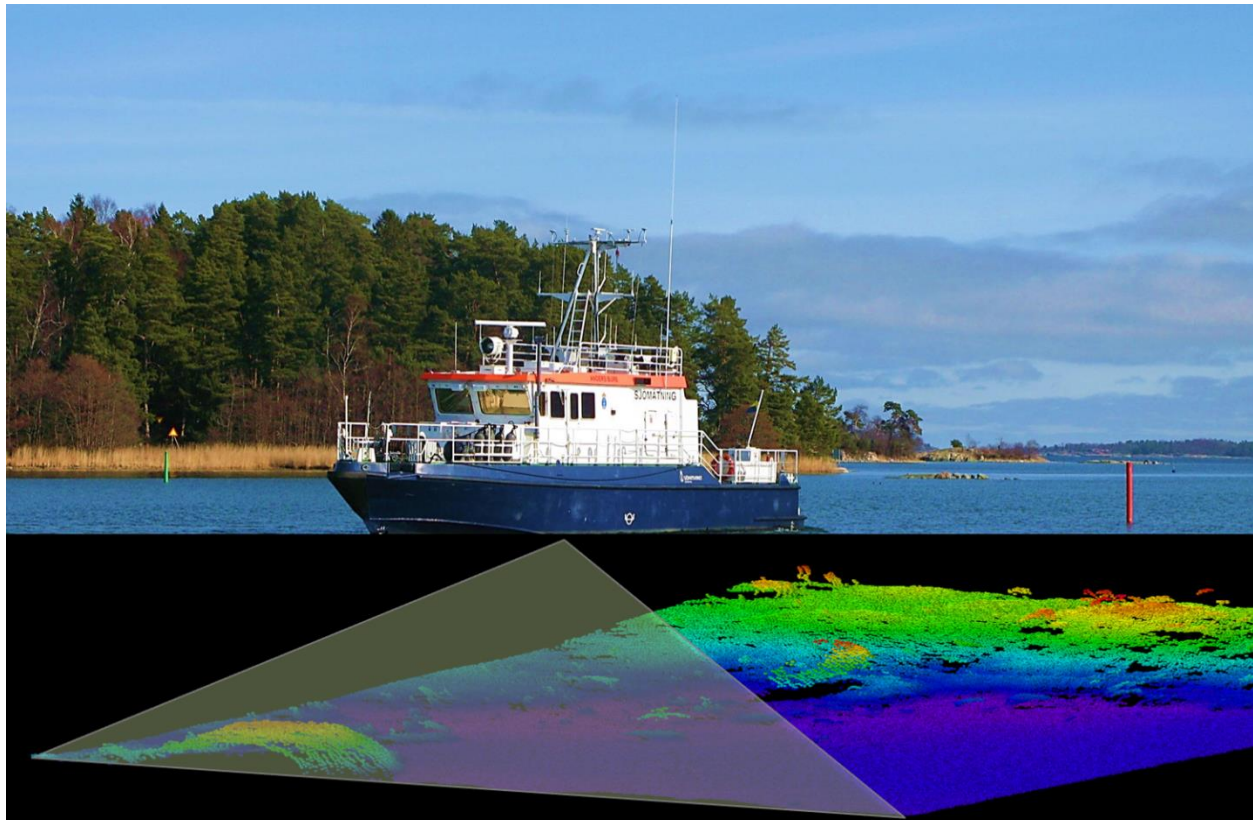
*Reliable bathymetry provides
basic knowledge for
Blue Growth:*

- *Environmental mapping*
- *Environmental protection*
- *Marine spatial planning*
- *Climate change actions;
protection, flooding prediction*
- *Efficient shipping*
- *Tourism*
- *Cultural heritage*
- *Energy at sea;
wind and wave*
- *Fishing*
- *Marine farms*
- *Exploitation*
- *Services developed by
SMEs – job creation*



ADAPT

Assuring Depth of fairways for
Archipelago Public Transportation



Partners:

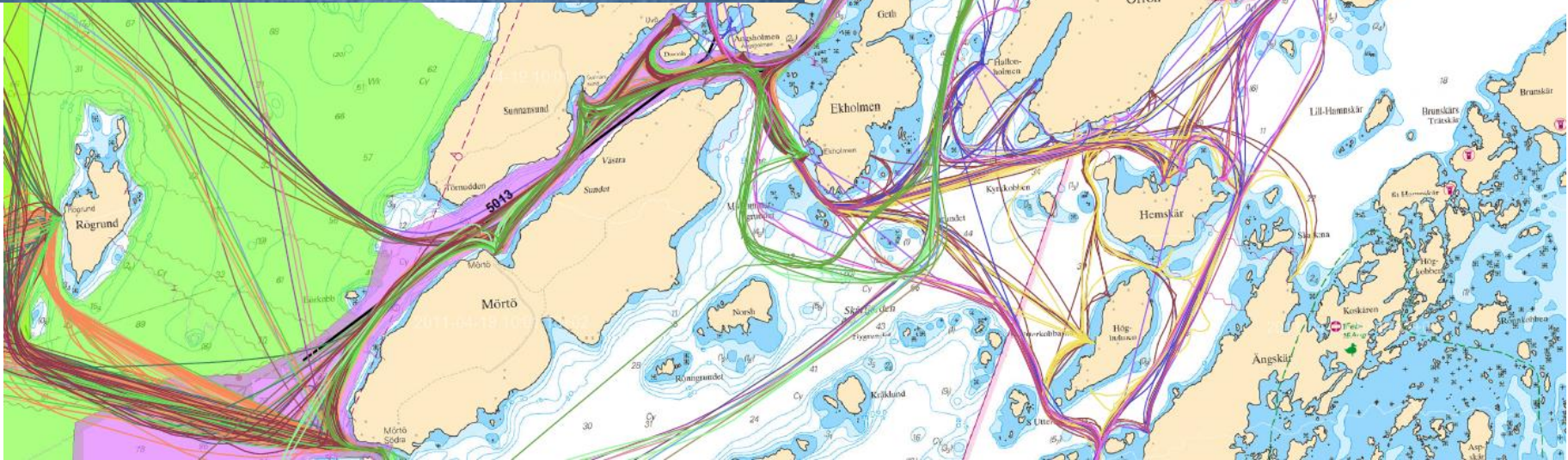
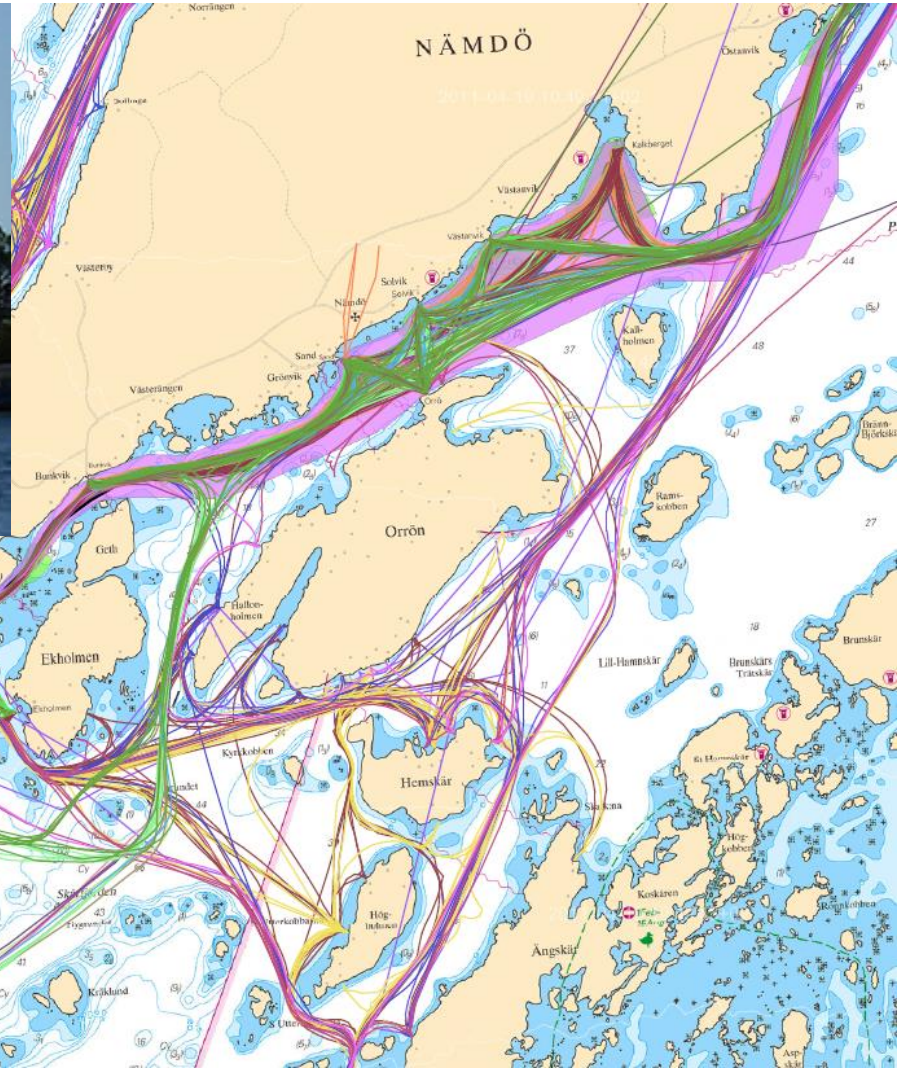
Maritime partnership

- SMA (lead partner)
- Stockholm County Council
- Government of Åland

The objective is to improve the safety of navigation for the regular public transportation sector in the archipelagos of Stockholm and Åland by surveys and improved charts. Another objective is improvement in regards to route planning and find possibilities for reduced fuel consumption.



Public transportation routes - example



Survey, data processing and chart production

Cost: 1,2 M Euro

75 % co-finance from Interreg

25 % financed by Stockholm

County Council

Area: 176 km²

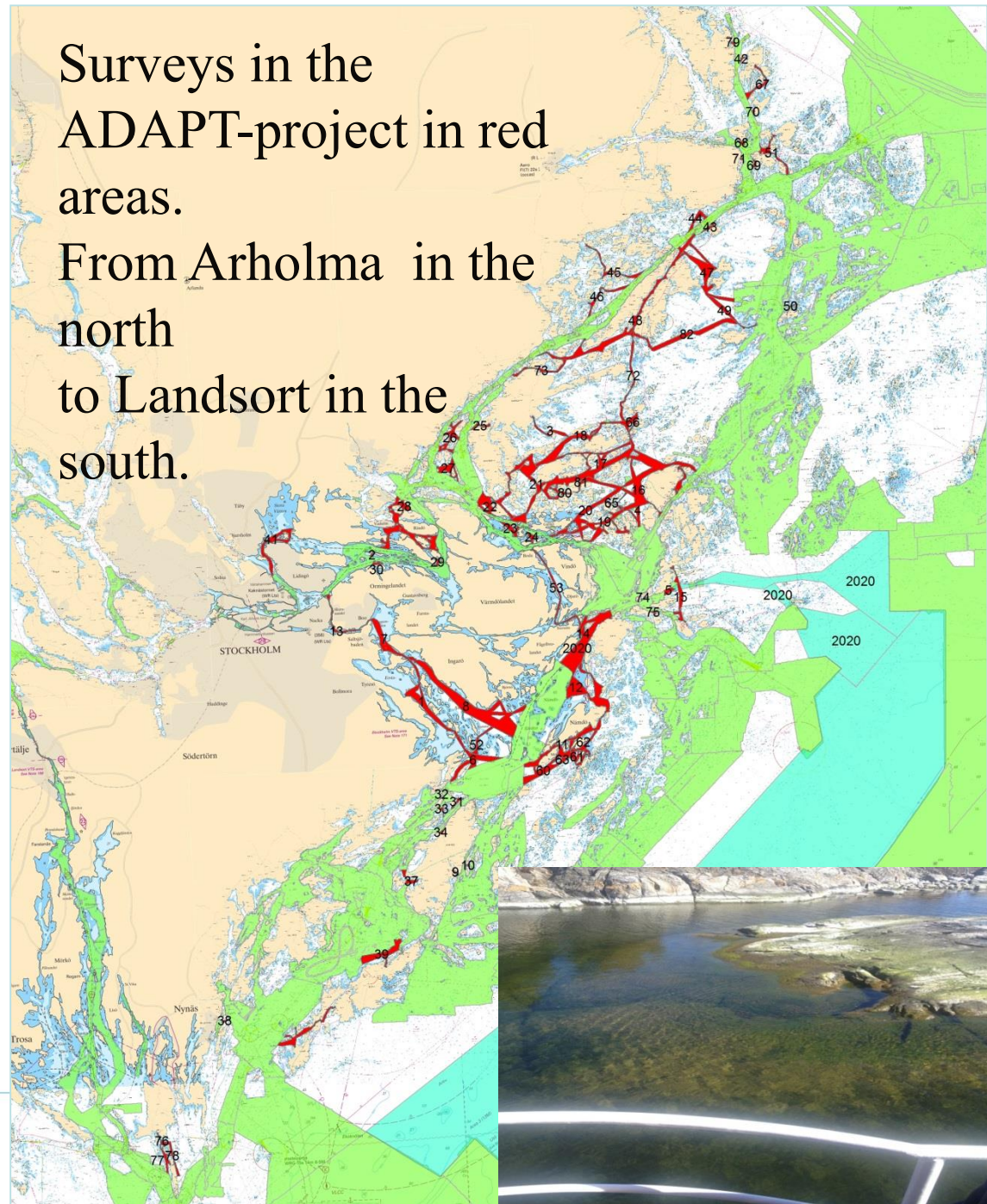
Surveying: 2016 – 2017

Chart update: 2018



Surveys in the ADAPT-project in red areas.

From Arholma in the north to Landsort in the south.



Obstacles in existing Funding Programmes

- **Hydrographic Surveying (improved seabed surveys) is only mentioned in the CEF Motorways of the Seas programme.**
- **You need to be very innovative in order to get a hydrographic surveying project approved**
- **Hydrographic Surveying is needed for many different stakeholders – There is no overall funding programme for mapping**

EU is spending for funds on space projects then mapping its own coastal waters?

