

# BALTIC SEA HYDROGRAPHIC COMMISSION

## BSHC report to IRCC04

Singapore, 7-8 June 2012

### 1. Chairman

**Chairperson:**

Patrik Wiberg (SE) from September 2011  
Henryk Nitner (PL) from September 2010  
Charlotte Wiin Havsteen (DK) from September 2009  
Mathias Jonas (DE) from August 2008  
Viktoras Liulys (LI) from June 2007

**Vice-Chairperson:**

Jukka Varonen (FI) from September 2011  
Åke Magnusson (SE) from September 2010  
Piotr Pernaczynski (PL) from September 2009  
Jens-Peter Hartmann (DK) from August 2008  
Peter Ehlers (DE) from June 2007

### 2. Membership

Denmark, Estonia, Finland, Germany, Latvia, Poland, Russian Federation, Sweden

Associate member: Lithuania

Observers: Captain Robert Ward – IHB, Mr. Nigel Sutton – UKHO

### 3. Meetings:

Following BSHC meetings have taken place:

- 16<sup>th</sup> Meeting - Norrköping, Sweden (20-21 September 2011)
- 15<sup>th</sup> Meeting - Gdynia, Poland (21-23 September 2010)
- 14<sup>th</sup> Meeting - Copenhagen, Denmark (15 - 17 September 2009)
- 13<sup>th</sup> Meeting - Rostock, Germany (19 - 21 August 2008)
- 12<sup>th</sup> Meeting - Klaipeda, Lithuania (12 - 14 June 2007)

Next meeting 17<sup>th</sup> BSHC will take place 18-20 September 2012 in Helsinki, Finland.

### 4. Current BSHC Working Groups (WG):

- Chart Datum WG (CDWG)

- Baltic Sea INT Charting Coordination WG (BSICCWG)
- BSHC Re-Survey Monitoring WG (MWG)
- Baltic Sea Bathymetry Database WG (BSBDWG)
- Baltic Sea Maritime Spatial Data Infrastructure WG (BSMSDIWG)

## 5. Status of IRCC actions (relevant for the BSHC)

- *IRCC03/01: Implement actions to accelerate the process of ratification of the Protocol of Amendments to the IHO Convention in order to meet the end of 2011 deadline. RHCs Permanent.*

In the BSHC only one country (Russia) has not yet approved the amendments to the IHO Convention. In December 2011 the chairman of the BSHC sent a friendly letter to offer his assistance in order to help to speed up the process.

- *IRCC03/02: Encourage the approval of pending applications for IHO membership. RHCs Permanent.*

Not relevant for this Commission.

- *IRCC03/09: UK to lead the design of a framework for C-55 development by correspondence. 31 July 2011*

BSHC has taken part in this task.

- *IRCC03/12 Ensure the timely provision of the appropriate documentation that justify expenses associated to CB projects, and to demand refund, if needed, not later than one month after the event has finalized. RHCs Permanent.*

Not relevant for this Commission.

- *IRCC03/13 Report to the WENDWG Chair on the implementation of each item of the WEND Principles and on the validity of coverage and overlap analysis submitted by the WENDWG. RHCs 30 June 2011*

Completed

- *IRCC03/15 Provide to the WENDWG Chair and IRCC Chair comments on the draft report on implementation of the WEND Principles. RHCs 15 October 2011.*

Completed

- *IRCC03/17 Invite GEBCO Guiding Committee / Bathymetric Regional Project Chairs to attend corresponding RHCs meetings, aiming at strengthening collaboration with a priority on improving high resolution shallow water bathymetry at the regional level. RHCs/GEBCO Permanent.*

BSHC have invited a representative from GEBCO (Dr. Martin Jakobsson) to take part in the Baltic Sea Bathymetry Database Working Group (BSBDWG). The GEBCO representative participated partly at the 16<sup>th</sup> BSHC meeting in 2011 and shall also be invited to the next

BSHC 17th meeting.

- *IRCC03/18 Update the report to IRCC Chair on the implementation of the guidance for the preparation and maintenance of International chart schemes (CL 23/2010 of 3 March 2010).*

Completed

- *IRCC03/19 Report to IRCC4 on:  
a. their experience in dealing with marine disasters in relation with IHO guidelines (TR 1/2005),*

Nothing to report for BSHC.

*b. strategies to involve non-IHO MSs in RHC's activities.*

Lithuania is involved in the BSHC as an associate member.

## **6. Agenda Items:**

### Baltic Sea INT Chart Coordination Working Group (BSICCWG)

One of many important tasks for BSHC is to coordinate the publication of international (INT) charts in the Baltic Sea Region, which is made through the sub-working group BSICCWG. A new responsibility for this working group is also to coordinate the small and medium scale ENC scheme for the region. There is total ENC coverage of the Baltic Sea, in appropriate scale bands, apart from a minor area in the south eastern Baltic Sea. See also image below.

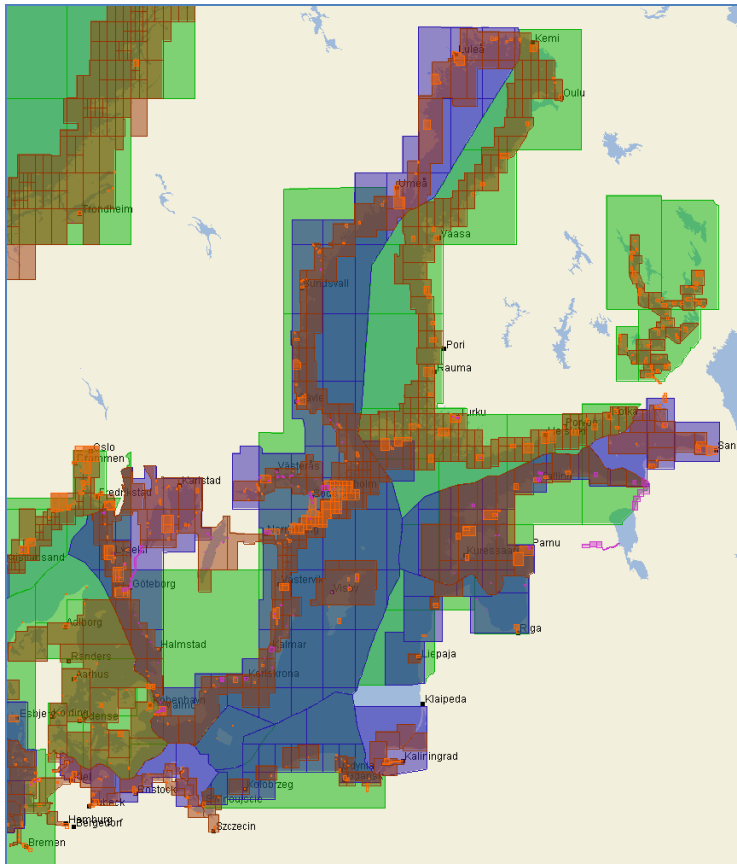


Image ENC coverage (Berthing, Harbour, Approach, Coastal and General) in the Baltic Sea Region.

The BSICCWG has also been working on modification to the current 2002 draft Edition 4 of the IHO S-23 Part 2 (Baltic Sea). Many of the existing geographical names in the S-23 publication may cause confusion to the users and this may be a critical safety issue.

Within the Nordic Hydrographic Commission a method of using neighbouring countries ENCs for paper chart production, where the paper chart covers a neighbouring country's geographical area, has been established since 2010. These principles have been presented also within BSHC and respective MS have been invited to consider participating.

#### Chart Datum Working Group (CDWG)

The main tasks for the Chart Datum Working Group are to prepare the implementation of the European Vertical Reference System (EVRS) in the Baltic Sea, to forward to the IHO Tidal and Water Levelling Working Group (TWLWG) more specific Mean Sea Level definitions and recommendations (especially for non-tidal areas), to study the validation, interpolation, prediction and distribution of water level information, and to cooperate with relevant other international bodies.

The WG has forwarded to the TWLWG proposals to amend IHO resolutions related to vertical datum.

#### Working Group for Monitoring the Implementation of the Harmonised Re-survey Scheme (MWG)

All countries surrounding the Baltic Sea have, through intergovernmental co-operation, agreed upon the Helsinki Convention (HELCOM). The main target of HELCOM is to co-operate in achieving an improved environment within the Baltic Sea. One of the objectives is a re-survey scheme where all

countries commit themselves to establishing a plan for re-surveying the fairway areas. The Working Group for Monitoring the Implementation of the Harmonised Re-survey Scheme has therefore been established.

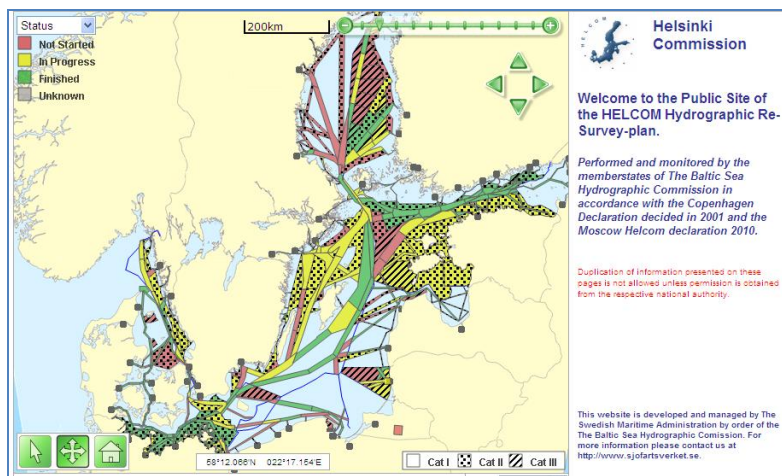


Image 1 Screen dump from the public site of the HELCOM re-survey plan <http://www.sjofartsverket.se/helcom>

#### Baltic Sea Bathymetry Database Working Group (BSBDWG)

The establishment of BSBDWG was a result of discussions and decision at BSHC 14. Initially, the Swedish Maritime Administration (SMA) has a task funded by the Swedish government, in cooperation with authorities concerned and within the IHO framework, to deliver an action plan aiming at the creation of a harmonised bathymetry model for the Baltic Sea.

The planned activities of BSBDWG (with some extensions) were then included in the application for an EU TEN-T project named MonaLisa (Motorways & Electronic Navigation by Intelligence at Sea). This application has been successful and has resulted in a considerably improved situation regarding funding of the activities. The project period for MonaLisa extends until the end of 2013.

#### Baltic Sea Maritime Spatial Data Infrastructure Working Group (BSMSDIWG)

At its 15th meeting, the BSHC recognised the need to initiate a study of MSDI in the Baltic Sea in order to identify areas where maritime SDI implementation is underway. This includes identification of problems that can be foreseen and how the Baltic member states regard the future development of MSDI in the region. Therefore, the BSHC 15th Conference established the BSMSDIWG with the task of studying MSDI in the Baltic Sea.

#### Baltic Sea ENC Harmonization Working Group (BSEHWG)

The working group was established in order to propose guidelines for harmonisation rules for ENCs. Since the guidelines were agreed upon, the implementation in respective BSHC country has been monitored by BSICCWG. An example of a harmonisation rule is that attribute values for Compilation Scale in each ENC scale band have been agreed upon.

### **7. Conclusions:**

Since 2007 the Baltic Sea Maritime Spatial Data Infrastructure Working Group and the Baltic Sea Bathymetry Database Working Group have been established. The HELCOM re-survey plan is now monitored through the Working Group for Monitoring the Implementation of the Harmonised Re-survey Scheme.

Harmonisation rules for ENCs within the region have been established and the implementation is monitored.

It is important that the IHO takes the lead in addressing MSDI matters through its MS for the maritime sphere. In view of IHO's definition of hydrography in place, MSDI delivers the instruments for the enhanced scope of hydrographic information users. MSDI is to create the framework for the future provision of this information beyond the classic field of surface navigation. The MSDI WG would be an appropriate WG to deal with these challenges.

The BSICCWG has also been working on modification to the current 2002 draft Edition 4 of the IHO S-23 Part 2 (Baltic Sea). Many of the existing geographical names in the S-23 publication may cause confusion to the users and this may be a safety critical issue. This will be on the agenda at the next BSHC meeting in Helsinki 2012.

#### **8. BSHC cooperation with other organizations:**

BSHC cooperates with the Helsinki Commission (HELCOM) and EU, in particular, with the European Commission in working out the EU Baltic Sea Strategy;

Finland and Sweden are actively participating in the TEN-T project "Mona Lisa", but other BSHC Member States also contribute to achieve the project goals;

Other area where BSHC cooperates with EU is the BaltSeaPlan Maritime Spatial Planning, with Germany being a Lead Partner;

By establishing BSMSDIWG, BSHC has initiated its coordinated cooperation with IHO in studying MSDI in the Baltic Sea.

#### **9. Actions required from the IRCC3:**

The IRCC is invited to note this report.

For the Chair of BSHC

Patrik Wiberg