



*PUSAT HIDROGRAFI DAN OSEANOGRAFI
TNI ANGKATAN LAUT*

**HYDROGRAPHY AND OCEANOGRAPHY CENTRE
INDONESIA NAVY (PUSHIDROSAL)**

INDONESIA NATIONAL REPORT

PROGRESS OF INDONESIA MARINE SPATIAL DATA INFRASTRUCTURE

<https://hdc.pushidrosal.id/home/>

THE 10th IHO MARINE SPATIAL DATA INFRASTRUCTURE WORKING GROUP- (MSDIWG-10) MEETING

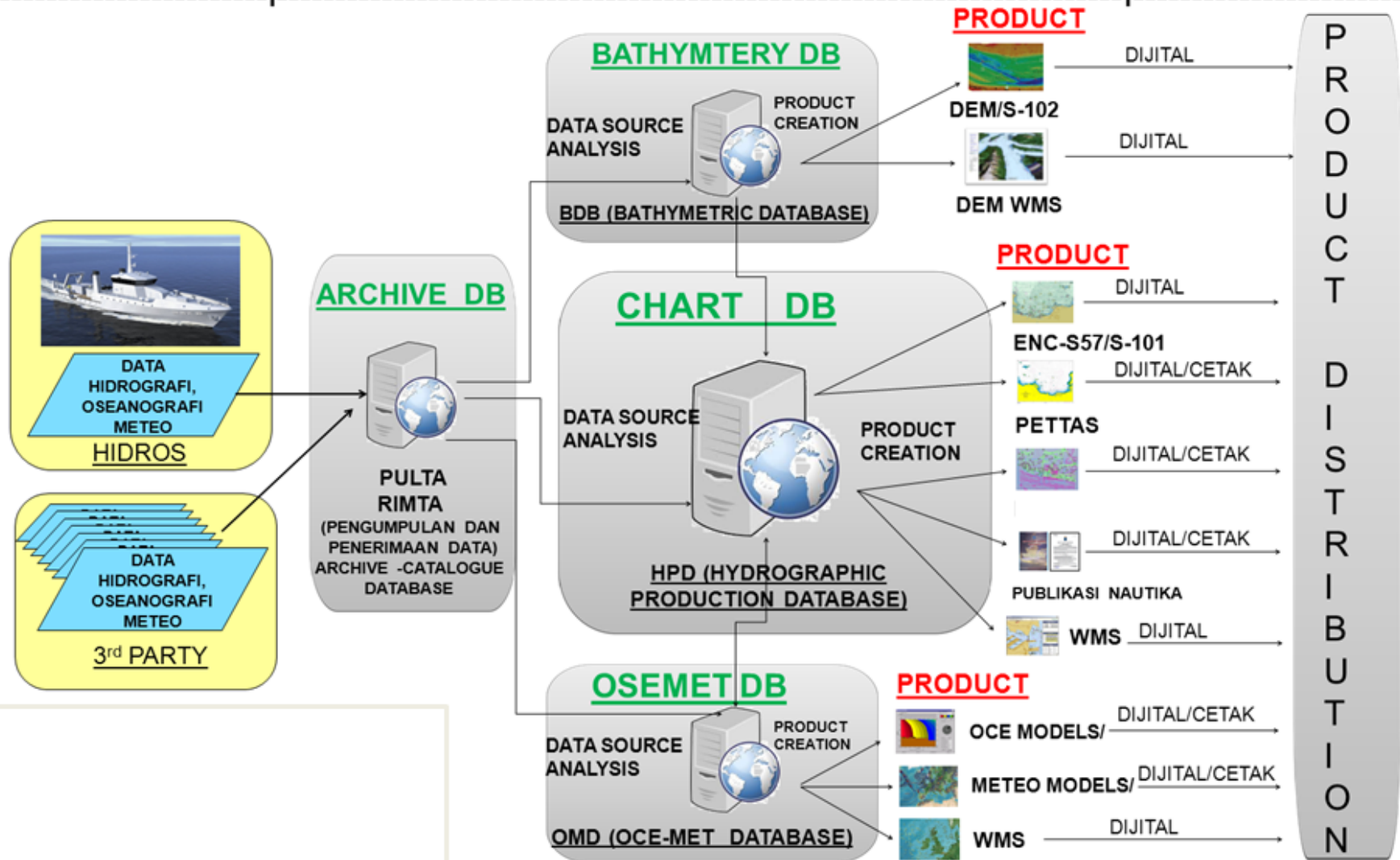
BUSAN-REPUBLIC OF KOREA, March 4th - 6th 2019



INCOMING

PROCESSING

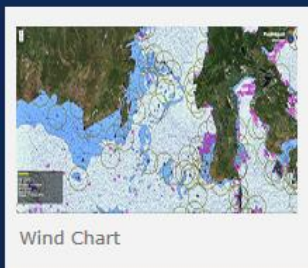
PUBLISHING





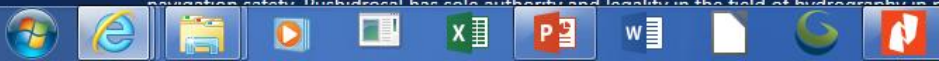
NEW ON HDC CONTENT

<https://hdc.pushidrosal.id/home/>



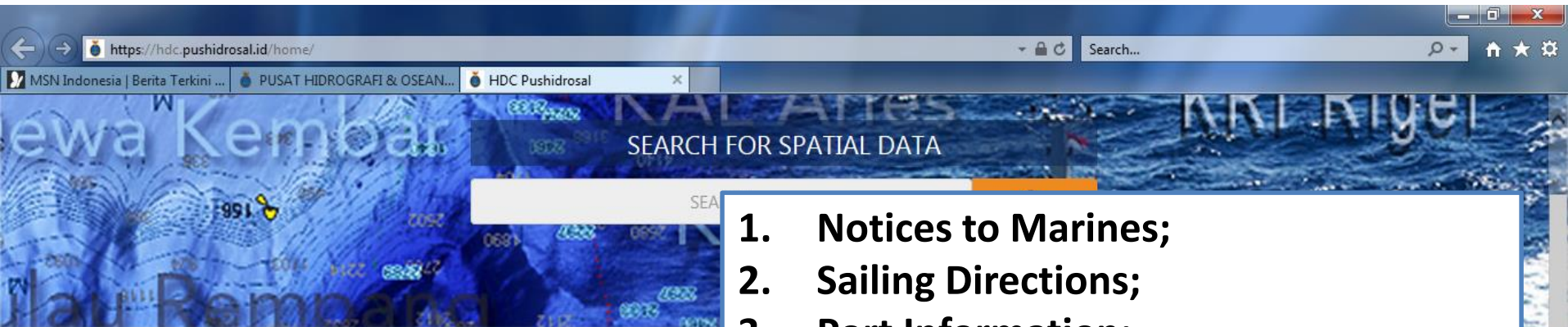
INDONESIAN NAVY HYDROGRAPHY AND OCEANOGRAPHY CENTER INDONESIAN MARINE GEOSPATIAL INFORMATION CENTER

This application is the entrance to the GIS applications. As a portal, this application can be used to display important and actual information related to the hydro-oceanographic data in Indonesia, such as survey data, research, marine mapping, publication, marine environment implementation and navigation safety of both TNI and public. For the purpose of marine navigation safety, Pushidrosal has sole authority and legality in the field of hydrography in preparing and providing data and Hydro-oceanography information in the form of marine chart.





NEW ON HDC CONTENT



1. Notices to Marines;
2. Sailing Directions;
3. Port Information;
4. List of Wreck;
5. Indonesian List of Lights;
6. List of Unlighted Buoys and Beacons;
7. Navigation Warning; and
8. Archieve



INDONESIAN NAVY HYDROGRAPHY AND OCEANOGRAPHY CENTER
INDONESIAN MARINE GEOSPATIAL INFORMATION CENTER

This application is the entrance to the GIS applications. As a portal, this application can be used to display important and actual information related to the hydro-oceanographic data in Indonesia, such as survey data, research, marine mapping, publication, marine environment implementation and navigation safety of both TNI and public. For the purpose of marine navigation safety, Pushidrosal has sole authority and legality in the field of hydrography in preparing and providing data and Hydro-oceanography information in the form of marine chart.



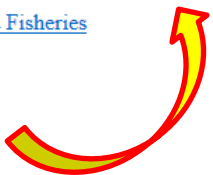


ON GOING FUTURE PLANNING

https://nodc.id

Pencarian
Jumat, 1 Maret 2019

- **BIG**
- **BMKG**
- **LIPI**
- **PUSHIDROSAL**
- **LAPAN**
- **KKP**



**WORKING TOGETHER WITH
OTHER STAKE HOLDERS**



**INDONESIA
NATIONAL OCEAN DATA CENTER
(NODC)**

*PUSAT HIDROGRAFI DAN OSEANOGRAFI
TNI ANGKATAN LAUT*



**MARITIME COORDINATING
MINISTRY**



**MARINE AND FISHERIES
MINISTRY**



**GEOSPATIAL INFORMATION
AGENCY**



**CLIMATOLOGY AND
GEOPHYSICS METEOROLOGY
AGENCY**



**PUSHIDROSAL
(HO)**



**NATIONAL INSTITUTE OF
AERONAUTICS AND SPACE**



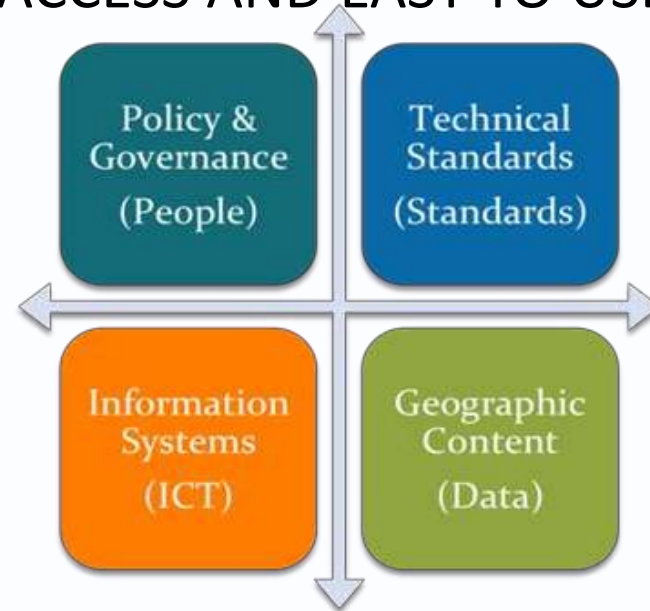
**OCEANOGRAPHIC RESEARCH CENTER
OF THE
INDONESIAN INSTITUTE OF SCIENCES**



REMARKS

- ❑ INDONESIA MSDI STILL ON PROGRESS TO BUILD MORE EFFECTIVE, EFFISIENCE, EASY TO ACCESS AND EASY TO USE FOR BETTER SERVICE

BASE ON 4 PILLARS OF MSDI



- ❑ MSP ISSUE ALSO BECOME OUR PRIORITY AND INDONESIA GOVERNMENT SUPPORT IT



**THANK YOU FOR YOUR ATTENTION
AND SUPPORT**