

MSDI and the need for a governance model

Ulla Kronborg Mazzoli
Danish Ministry for the Environment
Danish Geodata Agency



Outline

Governance – what is it?

Governance in an SDI context

Why do we need it?

How can we get started?



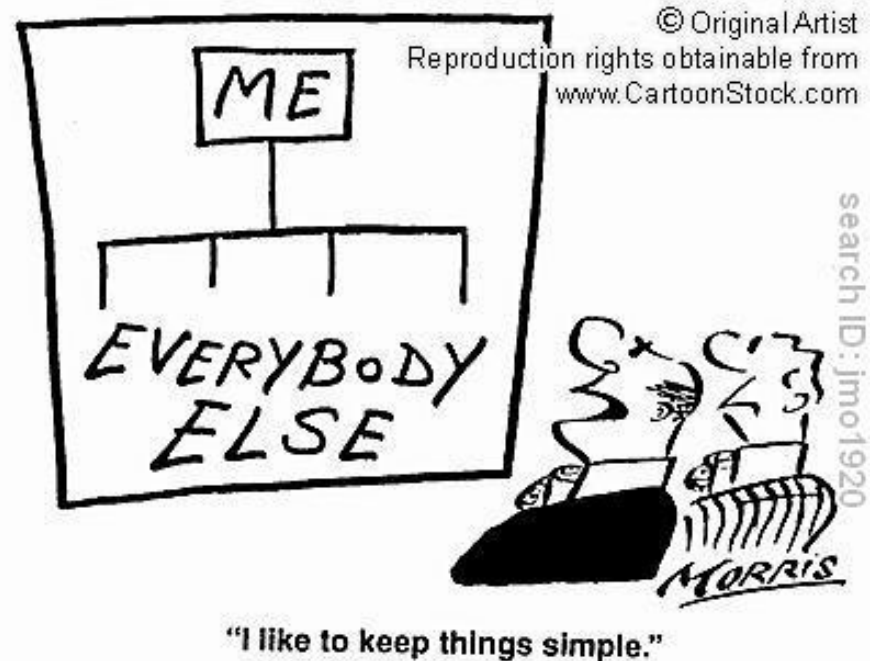
But.....

Governance is just a fancy word encompassing all the things we do to organize ourselves, make plans and decisions together, get things done, and resolve conflicts.

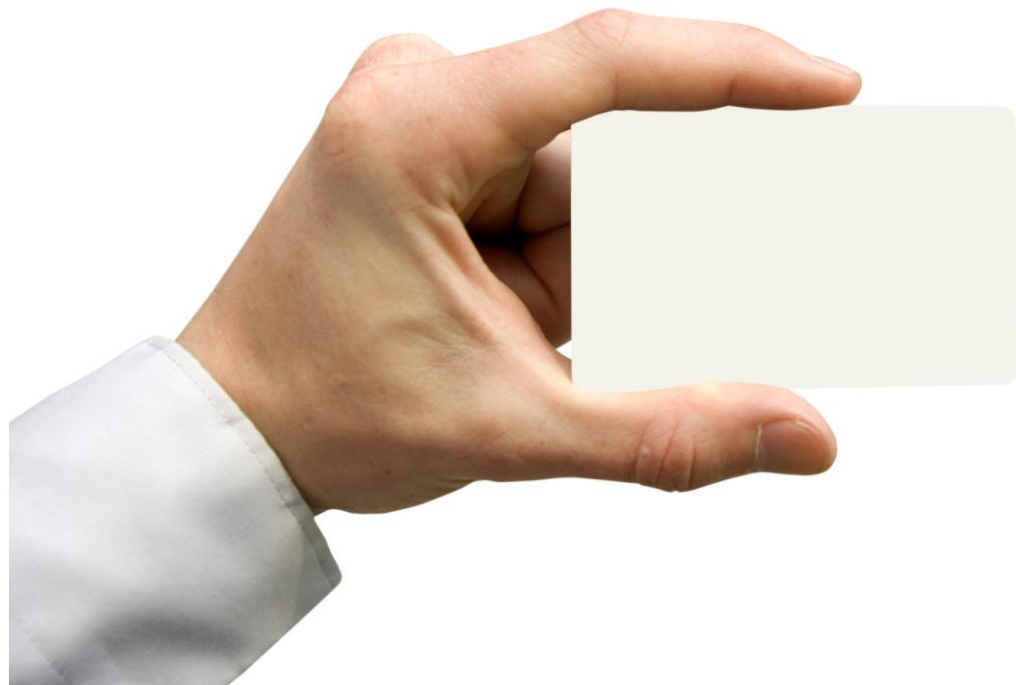


So governance comprises

- Authority structures
- Roles and relationships
- Rules and policies
- Processes and mechanisms

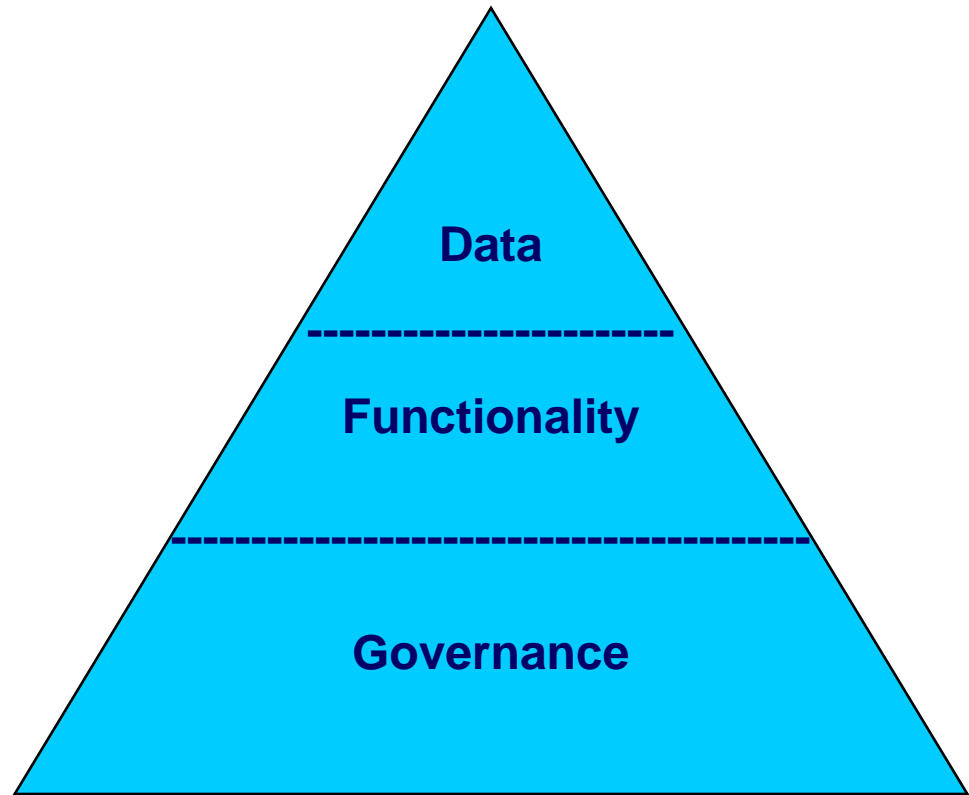


We need to scope

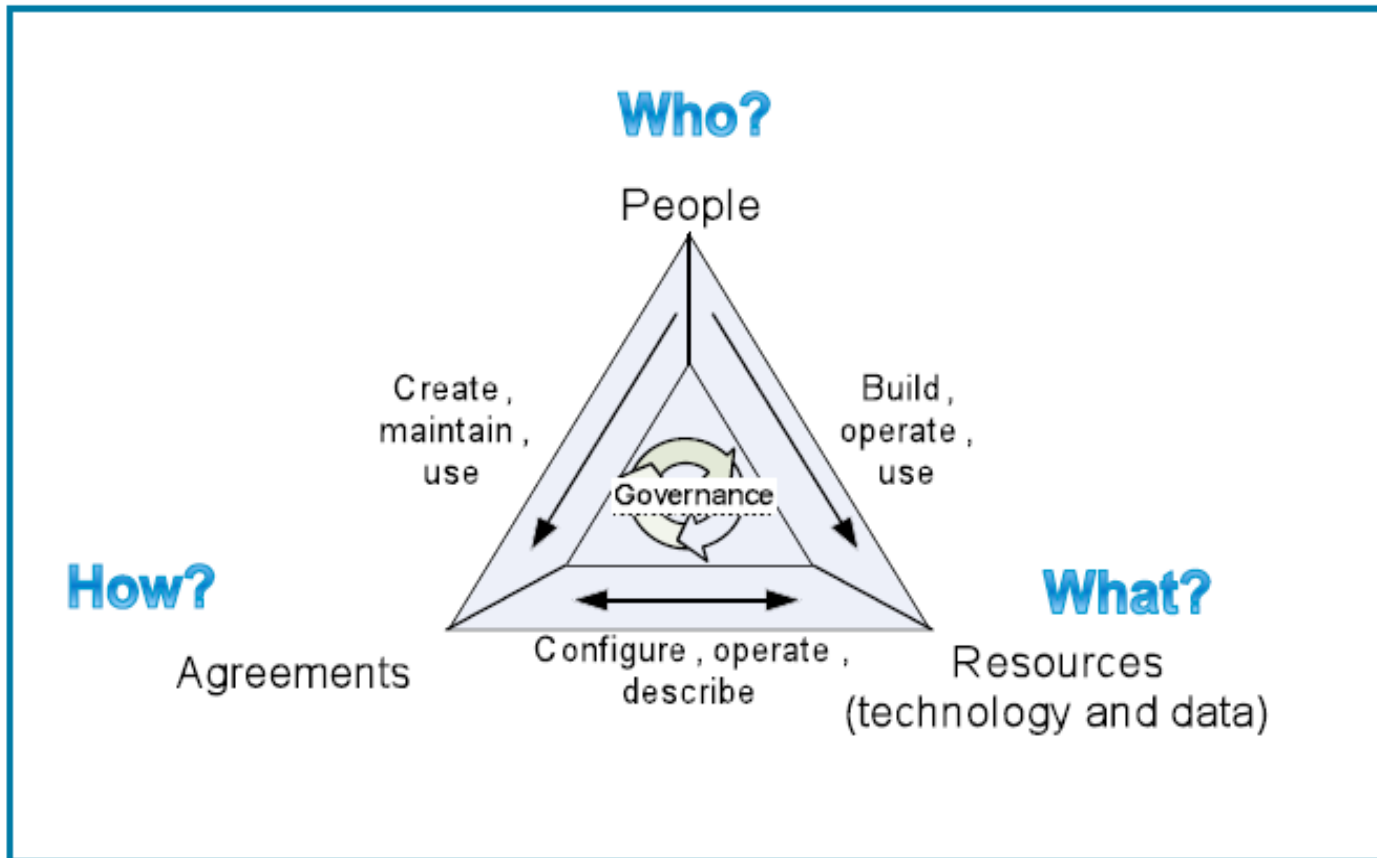


Components of the SDI

- DATA - metadata, datasets
- FUNCTIONALITY – spatial data services, web services and other technology
- Agreements and organization – rights and access - *Governance!*



SDI governance dimensions



When?

Lifecycle and status of resources and agreements under constant change

The role of SDI governance

Framework for managing the SDI

WHY?

Ensure the most efficient management of geospatial resource in meeting user needs

WHY?

Ensure that user needs are met in the most efficient and value-creating way



Closer look at SDI and governance



Three domains

1. Socio-governance domain
2. Business-governance domain (conceptual level)
3. Technical-governance domain



SDI Governance framework

Socio-governance domain

- **agreements** about cohesion and direction
- **decision** structure and responsibilities
- **strategy, policy**
- **financing!!**

Business-governance domain (conceptual level)

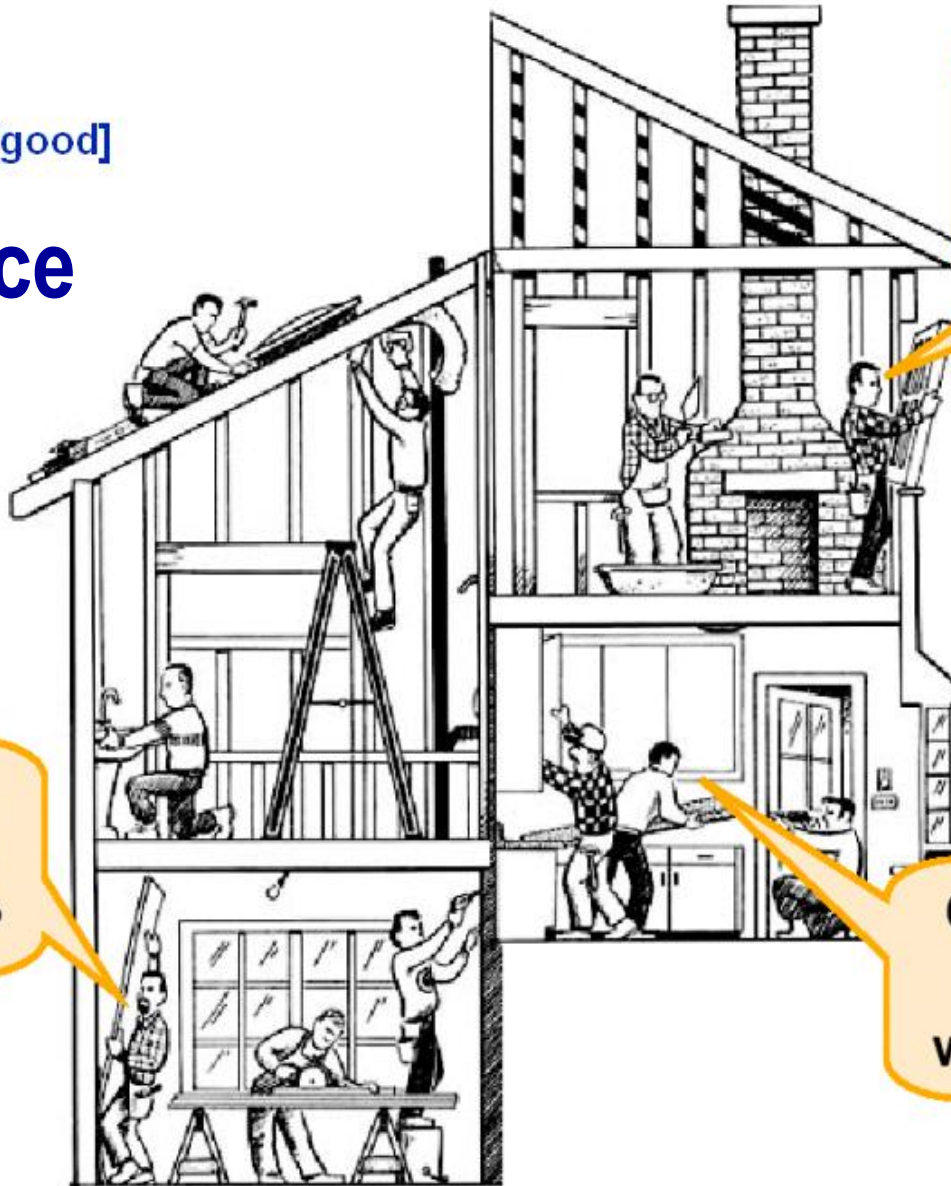
- **business models**
- use and access
- common data models
- common components
- **business cases**
- payment, restrictions

Technical-governance domain

- **use cases**
- **design** (architecture)
- standards (implementation)
- use of technical components



Oops! No [good] Governance



Oops! What does this connect?

Oops! Who is this supposed to hand off to?

Oops! Where does the water flow to?

The need for SDI governance



Drivers for requirements and expectations

- Politics
 - what is “hot”
- Economy
 - crisis
- Democracy
 - Open Government
- Environmental change
 - adaptation and reduction
- Technology
 - interoperability and mash ups
 - multiple platforms
- Time!
 - we have to make decisions fast
 - we want information NOW
- It is complex and expensive....(if we don't do it right)



Governance is the critical SDI enabler

The 'social' nature of SDI

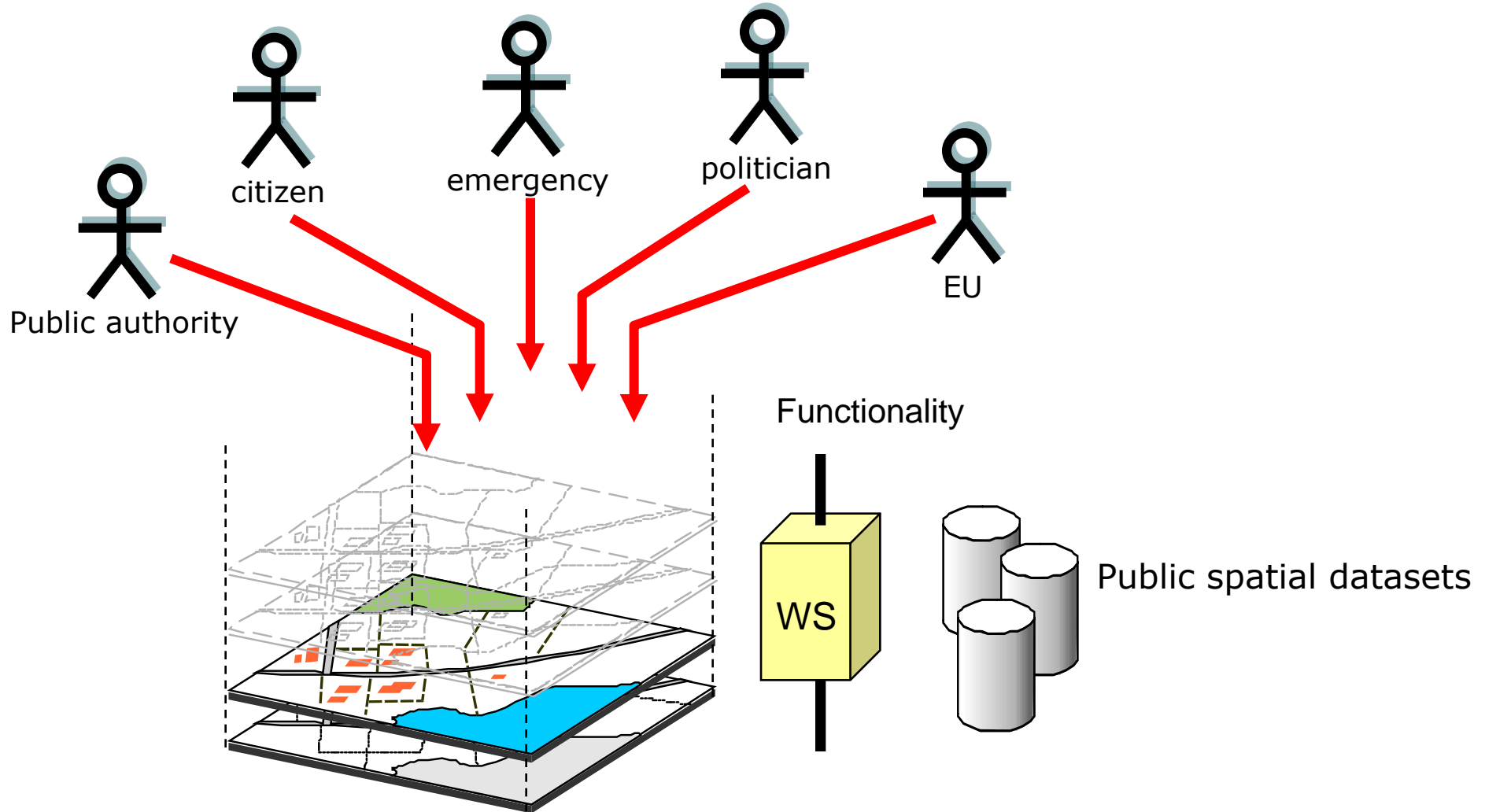
- Multiple stakeholders
- Cross-enterprise and cross-border
- Fragmented control/ownership of components
- Sow / Harvest schism
- Fragmented control/ownership of components
- Tensions between flexibility & standardization

Requires **agreement** within communities

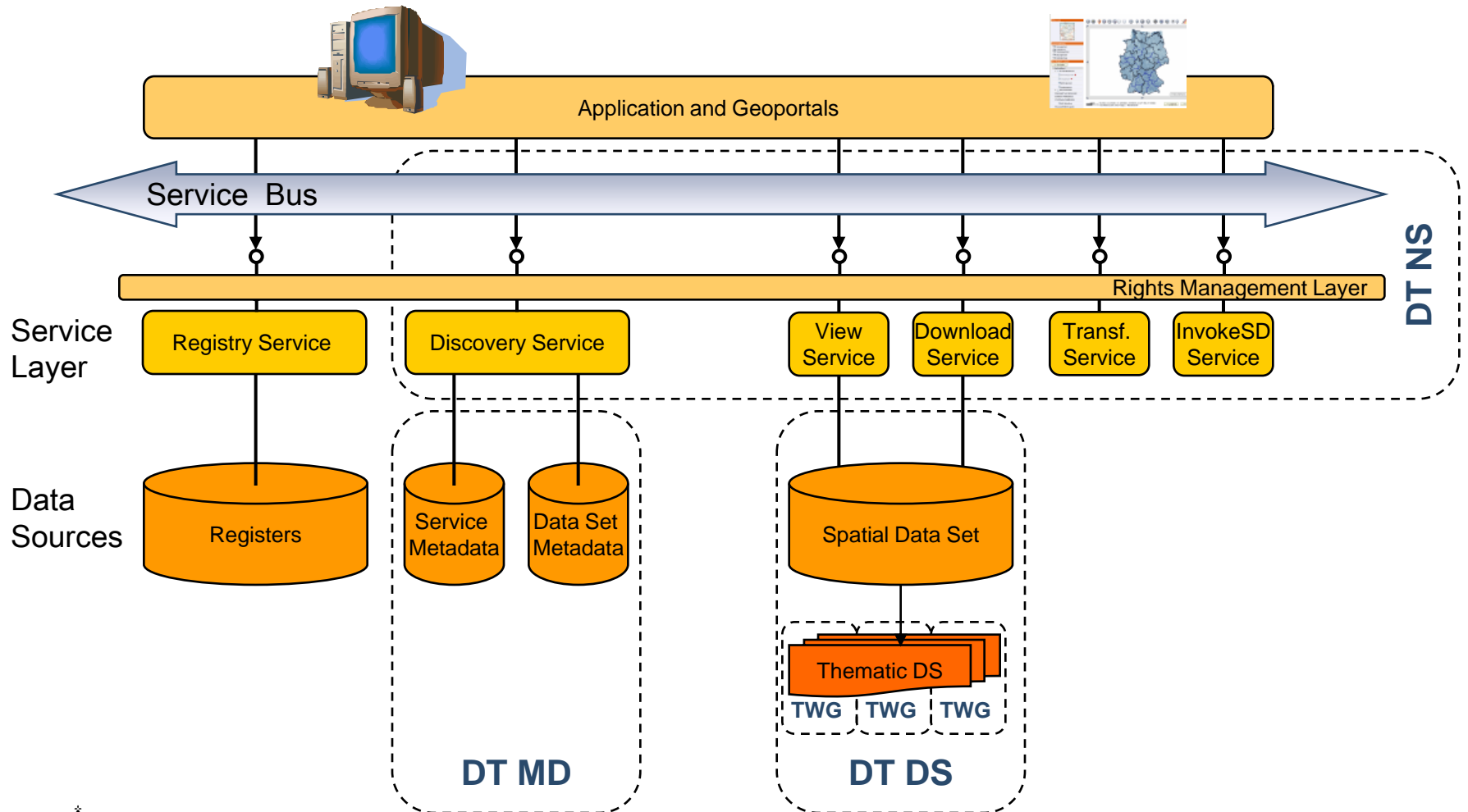
Requires joint **decisions**



Who decides what?

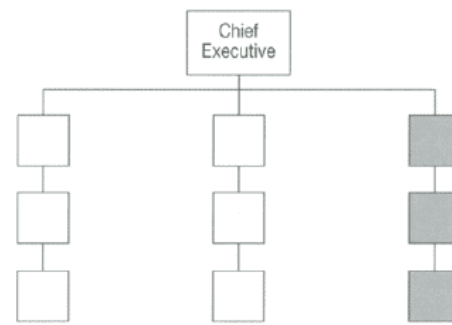


Who decides what?

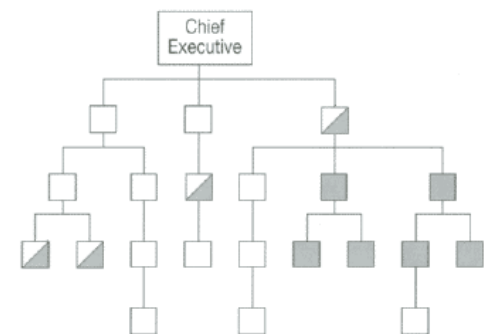


Governance is about decisions

- Structure must be clear and agreed upon
- Transparent
- Operational
- Can be organized in many ways



The traditional vertical structure



A more horizontal directorate-style structure





Step by step
and wearing
the right
harness

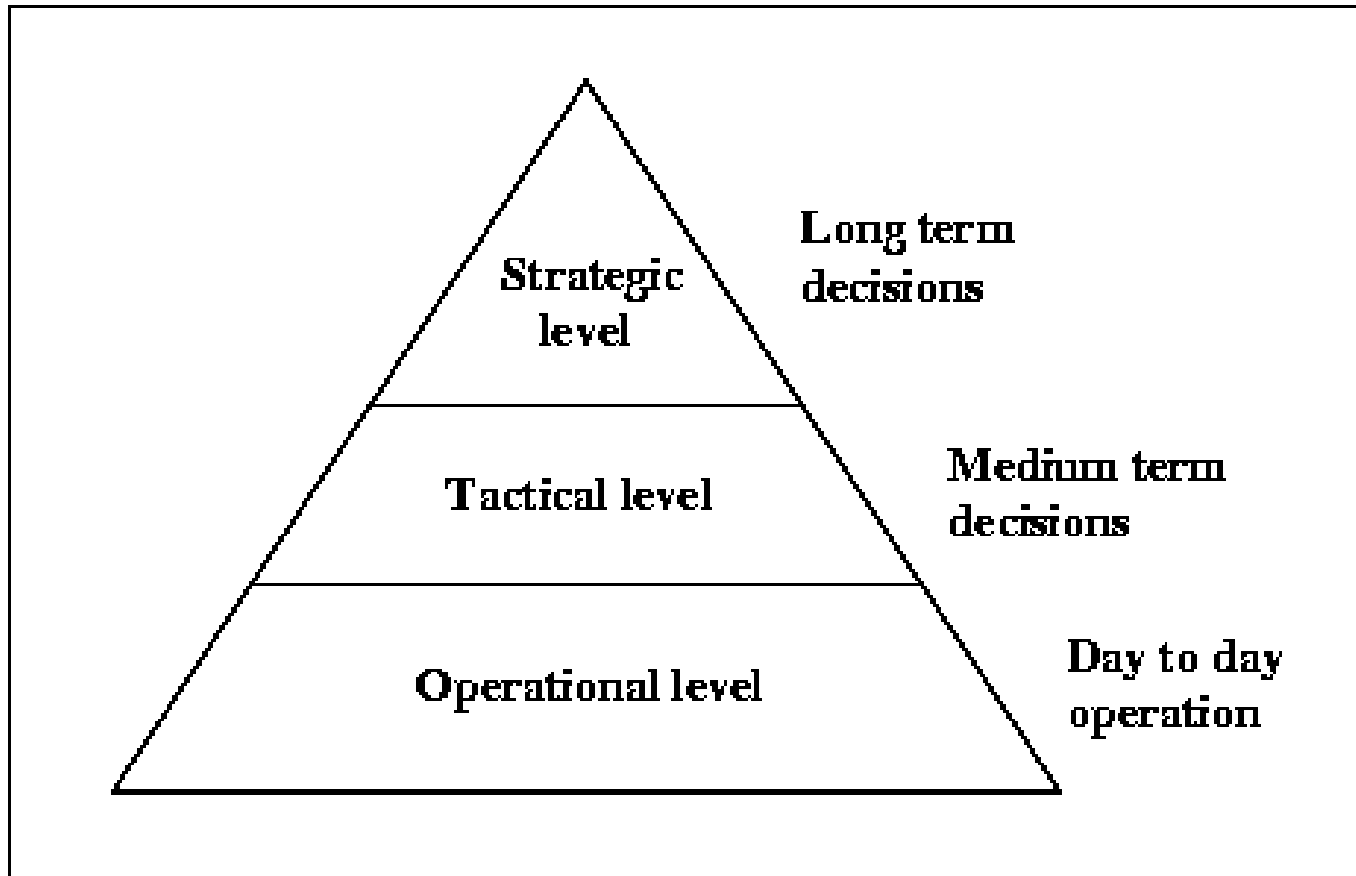
How do we
get started?



Slice the Elephant

- Authority structures
- Roles and relationships
- Rules and policies
- Processes and mechanisms





Roles and responsibilities

- Who is doing what when?
- Who can make decisions at a given level?
- At what level are which decisions made?
- Define scope and decision space

AND

- Look at other frameworks – reuse



Intensions



Reality?

Thank you for your attention.





Danish Ministry of the Environment
Danish Geodata Agency

Ulla Kronborg Mazzoli
Deputy Head of Department
National INSPIRE Contact Point

Rentemestervej 8
DK-2400 Copenhagen NV
Denmark
Phone: +45 72 54 50 00
E-mail: kms@kms.dk
www.kms.dk

