

2nd NCWG MEETING
Monaco, 26-29 April, 2016

Paper for Consideration by NCWG
Presentation of chart boundaries

Submitted by:	Sweden (SE)
Executive Summary:	Information regarding the use of yellow chart boundaries to adjoining charts.
Related Documents:	None
Related Projects:	None

Introduction / Background

In the late 90' SMA started to produce new Coastal Charts (250') and we saw a problem in presenting the adjoining chart boundaries. All the charts have INT-symbolization. According to S4 the limits to a better scale chart should be depicted in red.

Within our coastal chart we had a large amount of adjoining chart boundaries. A lot of information in the chart is already red. So we realized that showing the better-scale limits in red was not a good idea. To care for this issue we saw the need for another color. Therefore we chose to present the adjoining chart boundaries with yellow.

Analysis / Discussion

We have seen that the yellow color does not disturb the picture of the chart. It is clear enough to find the information in the chart if you need it.

Conclusions

As you see in the example below the picture of the chart is clear and the chart boundaries do not disturb the picture. As we see it this information is not information to priorities within the chart. In charts with many adjoining charts we see that this helps the mariner to focus on the important information without disturbing the picture.

We choose the yellow (100Y 5M) because it does not disturb the more important information. But when you need the information about the limits - you find it.

Recommendations

None.

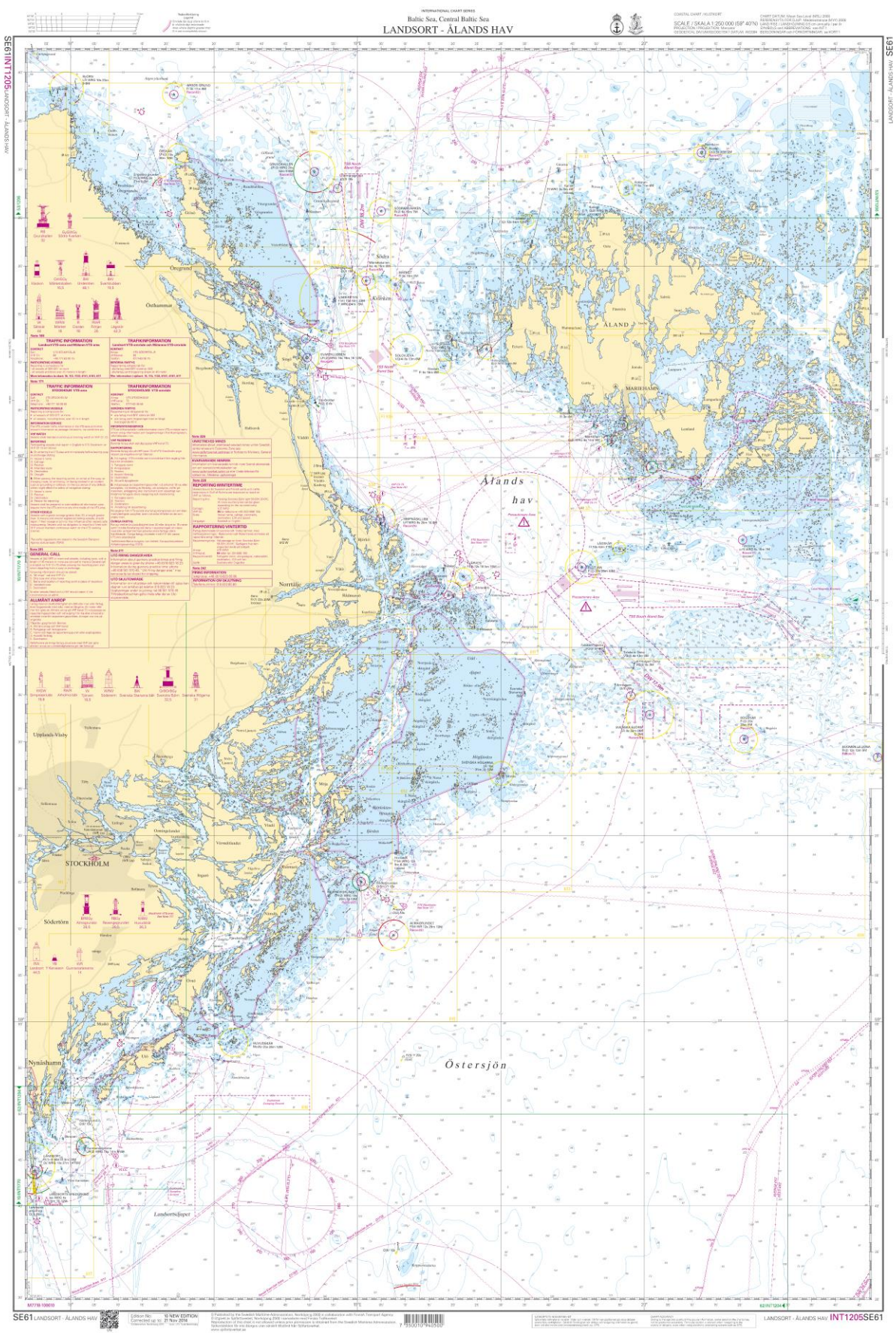
Justification and Impacts

None.

Action required of NCWG

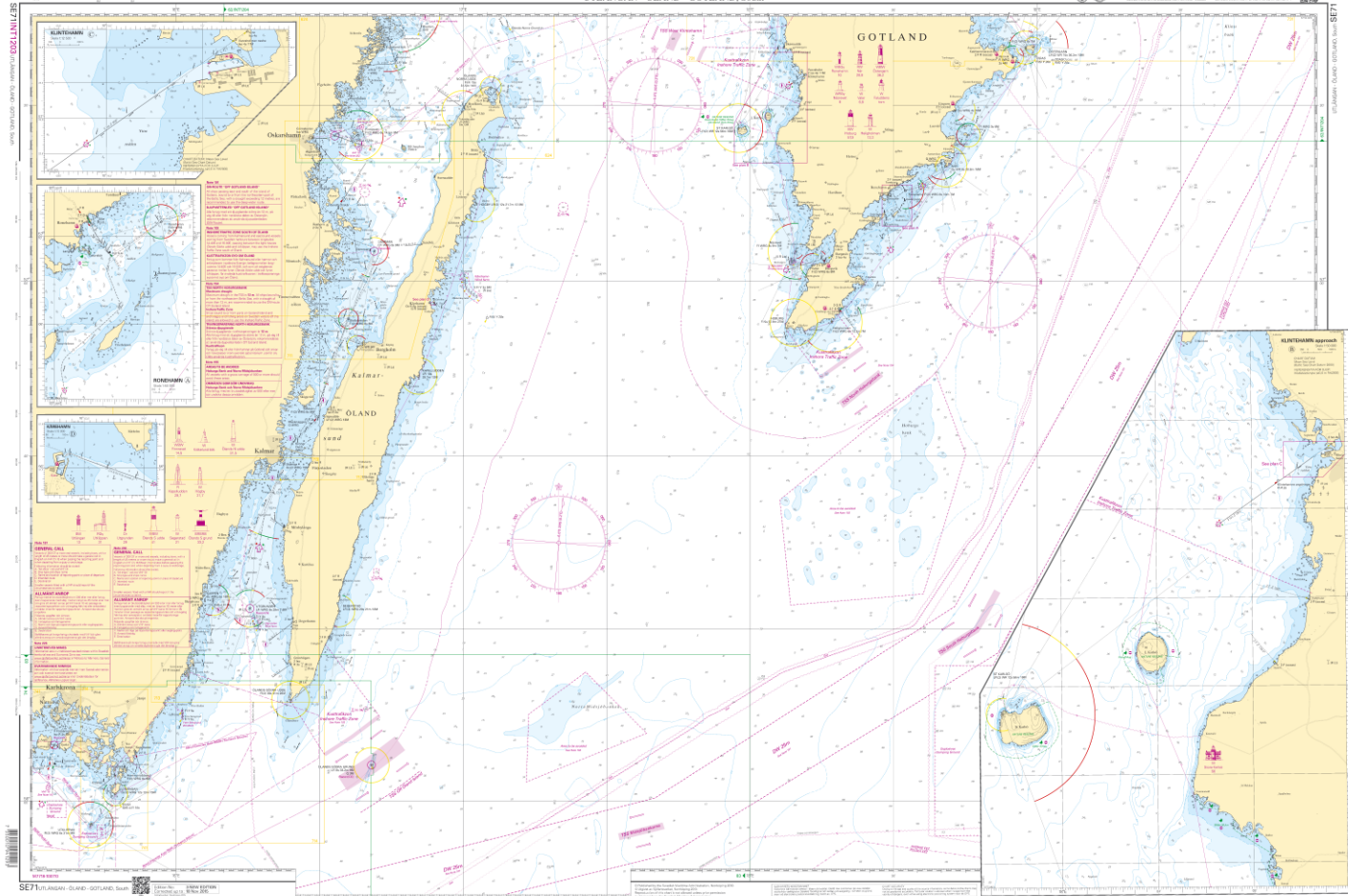
The NCWG is invited to:

- a. review the paper and provide comment.



UTLANGAN - ÖLAND - GOTLAND, South

NO. 1203 SE71
UTLANGAN - ÖLAND - GOTLAND, South



SE71 UTLANGAN - ÖLAND - GOTLAND, South

UTLANGAN - ÖLAND - GOTLAND, South INT1203SE71