

## Paper for Consideration by NCWG

## References to other charts

<b>Submitted by:</b>	Netherlands Hydrographic Office / Ben Timmerman
<b>Executive Summary:</b>	References to other charts
<b>Related Documents:</b>	INT1-S4
<b>Related Projects:</b>	B-254 (S4) and part A19 (INT1)

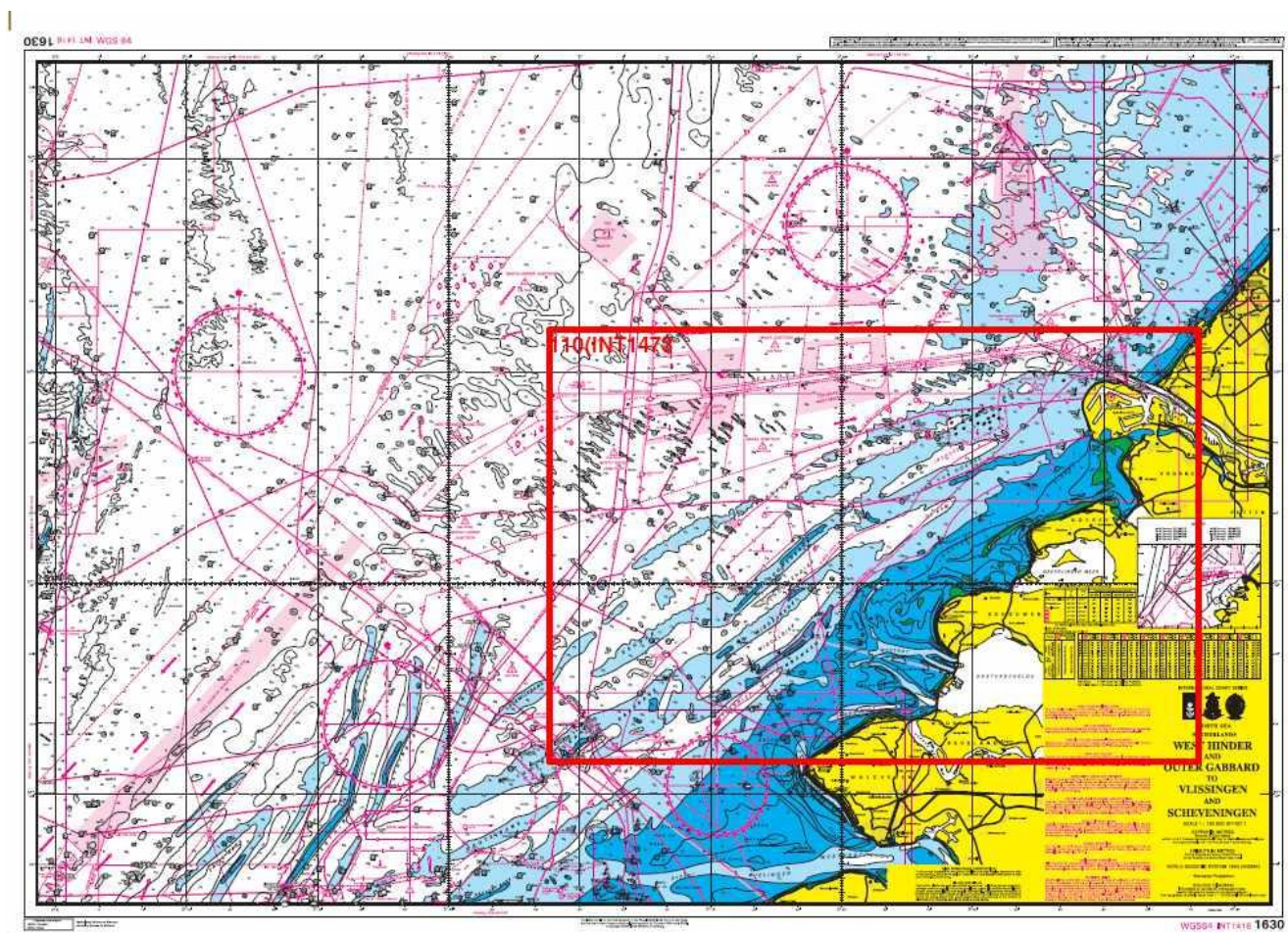
## Introduction / Background

During the production of the new edition of INT1 there was some confusion about the guidelines for reference to adjoining charts.

## Analysis / Discussion

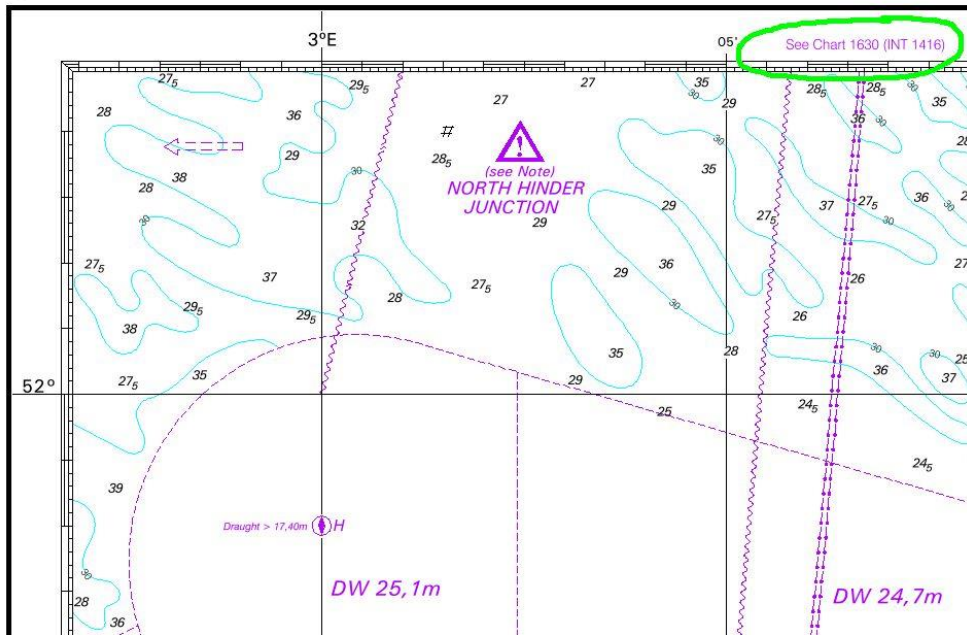
B-254 states that Hydrographic offices should include references to similar or larger scale charts.

However there are numerous occasions that where a larger scale chart ends reference is made to the adjoining smaller scale chart. This gives the user an indication which chart to use in the next appropriate (smaller) scale. An example is chart 110, which is part of the coverage of chart 1630.

[Chart 1630 \(1:150000\) with outlines 110 \(1:75000\)](#)


On the outer edge of chart 110 reference is made to the smaller scale chart 1630.

110 1473 INT 84 SGM



This guideline cannot be found in B-254, but is valuable information for the user. The user can see the next necessary chart immediately.

### Conclusions

Guidelines for references to other charts are not complete in my opinion and should include references to relevant smaller scale charts.

### Recommendations

1. Change the wording in 254(a) to include reference to relevant smaller scale charts
2. Extend B-254.1 as follows: Where reference to relevant smaller scale charts is made the wording "See chart..." should be used.

### Justification and Impacts

This will give the producer some more guidance on referencing to other charts.

### Action required of NCWG

The NCWG is invited to:

- a. consider this paper
- b. agree on the outcome
- c. adjust documentation in S4 and INT1 where necessary