



Workshop for Regional INT Charts / ENC Coordinators

25 April 2016 (IHB, Monaco)

Agenda item 4: Self-assessment Reports by INT  
Charts/ENC Coordinators

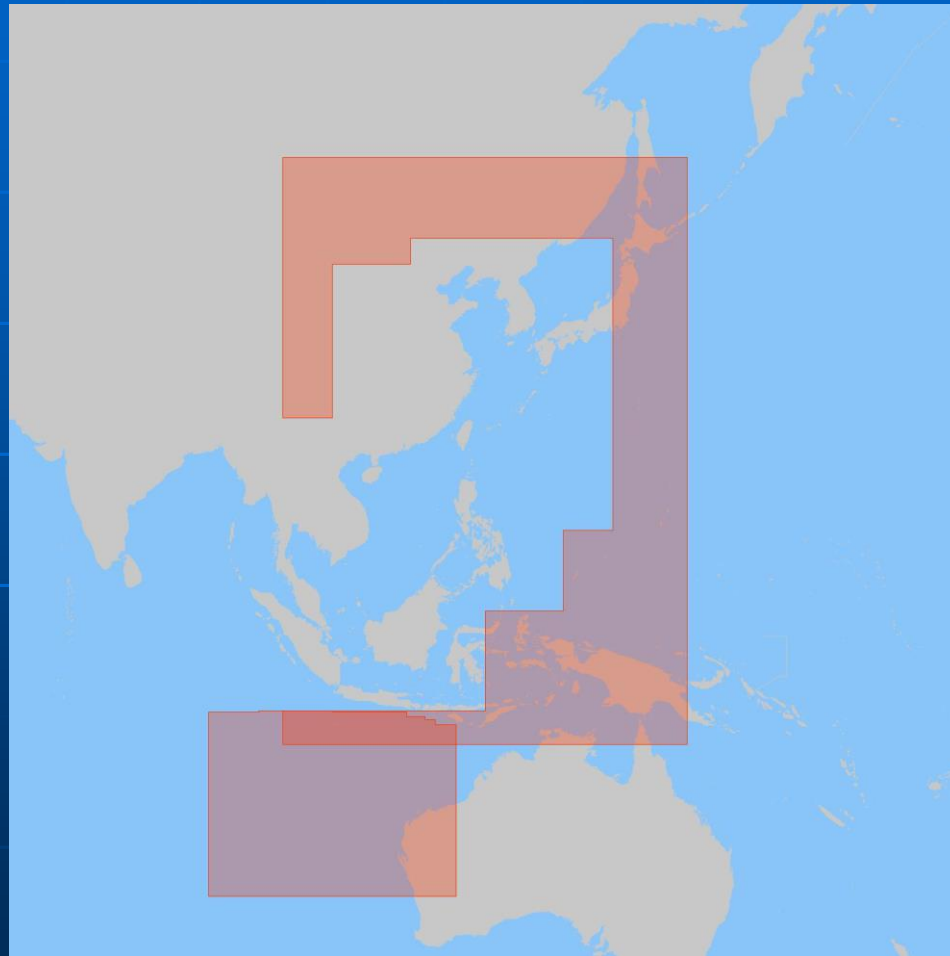
Region L (Mr Jeff Wootton)

# Development and Maintenance of Integrated INT Chart / ENC Schemes

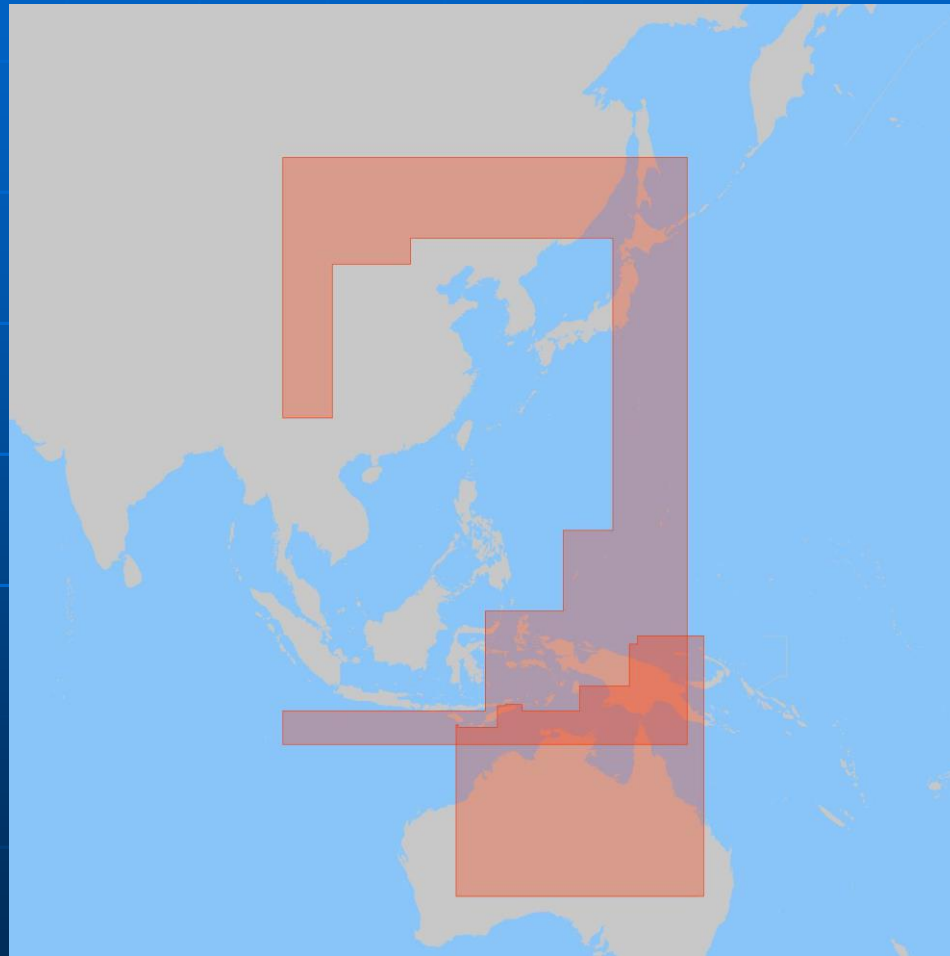
- ✦ The SWPHC has a published ENC scheme for Nav Usage 1 and 2. These schemes can be seen at:  
[http://www.iho.int/mtg\\_docs/rhc/SWPHC/SWPHC\\_Misc/SWPHC-ICCWG/SWPHC-ICCWG.htm](http://www.iho.int/mtg_docs/rhc/SWPHC/SWPHC_Misc/SWPHC-ICCWG/SWPHC-ICCWG.htm)
- ✦ AU1 ENC has some known overlaps with RU1 and C1 ENC. Russia and China are not part of the SWPHC and therefore resolving these issues is ongoing. The following slides showing overlaps are from the Chart Overlap checker tool.
- ✦ There are no overlaps in the SWPHC area for Nav usage 2
- ✦ There are no gaps in Nav Usage 1 coverage in SWPHC area
- ✦



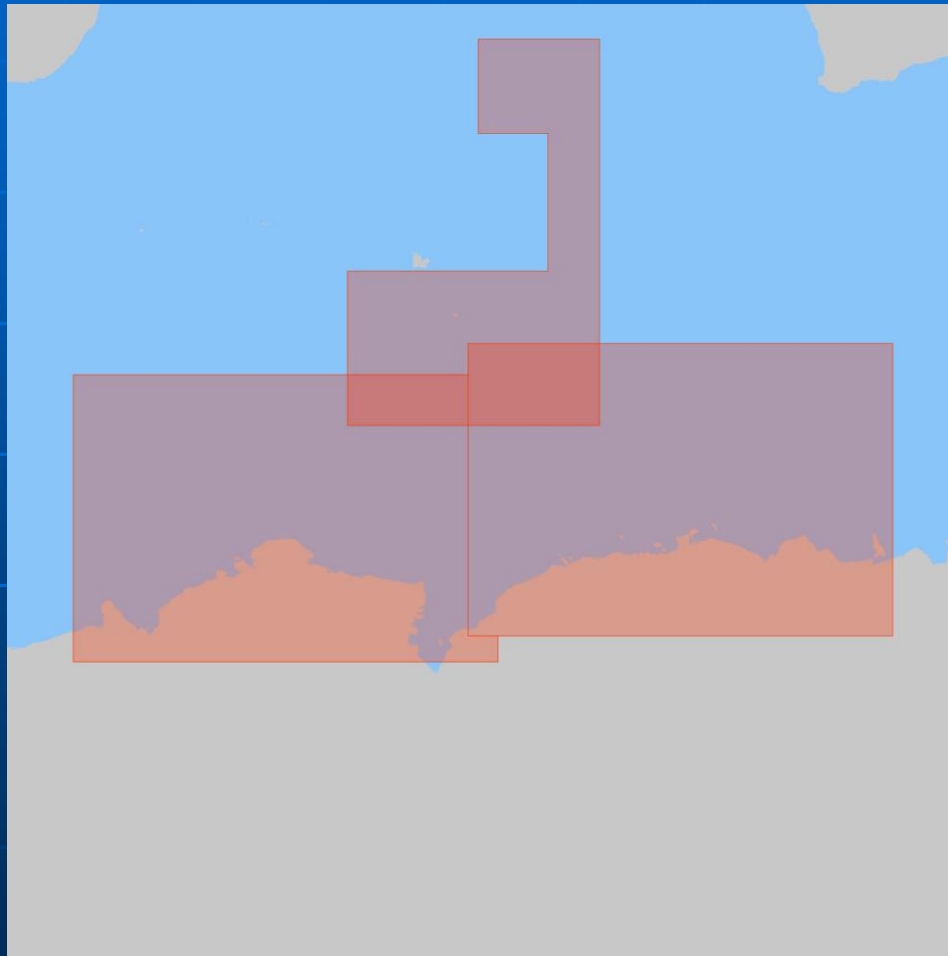
# Overlap between AU130090 and C1100101



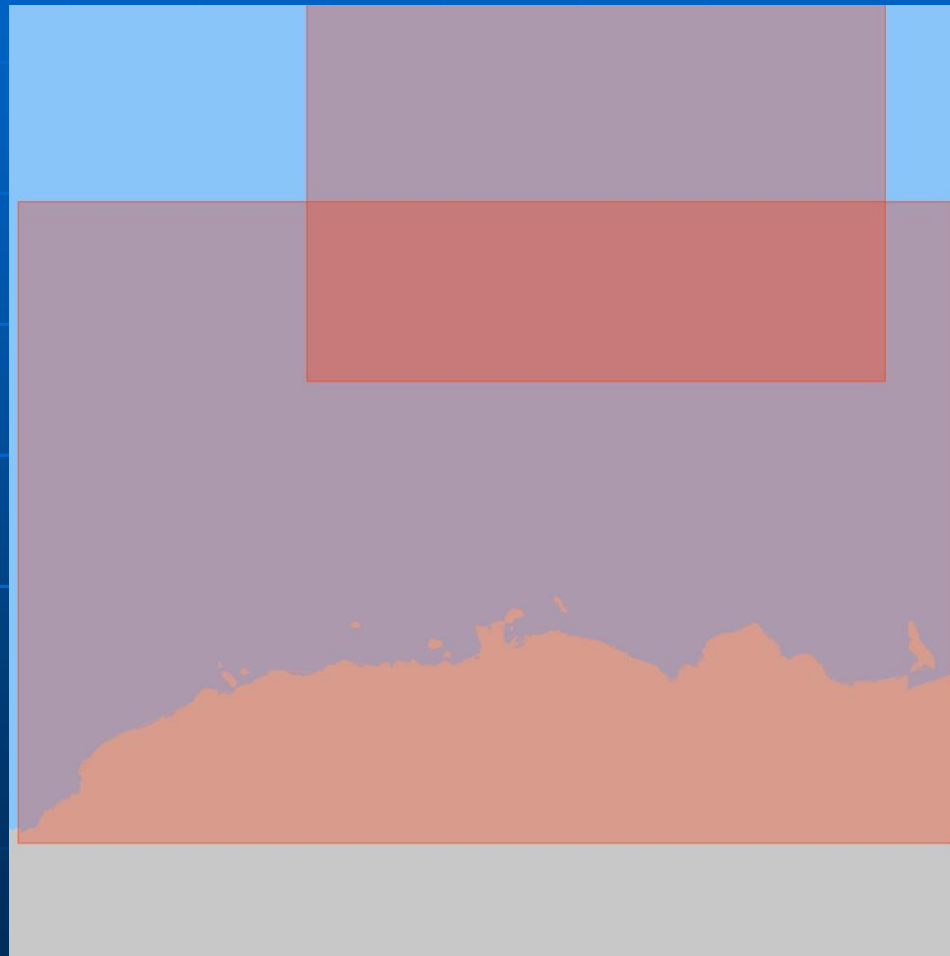
# Overlap between AU130120 and C1100101



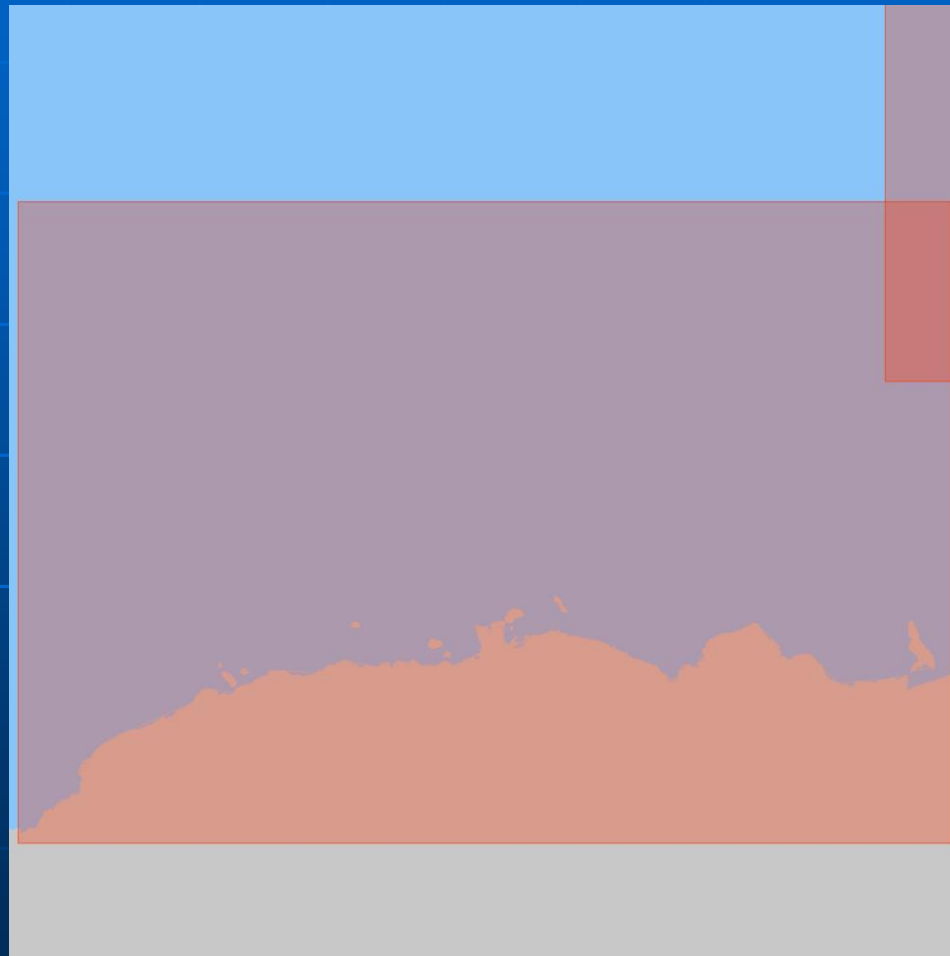
# Overlap between AU160060 and RU1A2K00



# Overlap between AU160090 and RU1B0PF0



# Overlap between AU160120 and RU1B0PF0



# Allocation of Production Responsibilities, Coordination

Collectivity	Primary Charting Authority	Collectivity	Primary Charting Authority
<b>SWPHC Members:</b>			
Australia	Australia	<b>Intergovernmental Observer Organization:</b>	
Fiji	UK	Secretariat of the Pacific Community (SPC)	
France	France		
New Zealand	New Zealand	Fed States of Micronesia	USA (NGA)
Papua New Guinea	Australia	Marshall Islands	USA (NGA)
Tonga	New Zealand	American Samoa	USA (NOS)
UK	UK	Pitcairn Islands	UK
USA	USA	Guam	USA (NOS)
<b>SWPHC Associate Members:</b>			
Cook Islands	New Zealand	French Polynesia	France
Kiribati	UK	Nauru	UK
Niue	New Zealand	Northern Mariana Islands	USA (NOS)
Palau	USA (NGA)	Samoa	New Zealand
Solomon Islands	UK (transferring to Australia)	Tokelau	New Zealand
Republic of Vanuatu	UK	Tuvalu	UK
		Wallis and Futuna	France
<b>SWPHC Observer:</b>			
New Calendoncia	France		





# Risk Assessment & Nautical Studies, Support and Advice provided in the Region

- ✦ SWPHC meetings held every 18 months, try to coincide with a technical workshop to encourage attendance and justify travel costs (which can be expensive and long between remote islands)
- ✦ SWPHC PCAs provide expertise and support to develop in country Hydrographic Services within the region, this is often supported by Capacity Building projects for risk assessments and in region training.



# Existence of a Region L ICCWG, Work by Correspondence, Workload

SWPHC ICCWG established in 2012.

Current SWPHC ICCWG Members

- Australia (chair) Hilary Thompson – [hilary.thompson@defence.gov.au](mailto:hilary.thompson@defence.gov.au)
- France Serge Lannuzel - [serge.lannuzel@shom.fr](mailto:serge.lannuzel@shom.fr)
- New Zealand Jennifer Abbott - [jabbott@linz.govt.nz](mailto:jabbott@linz.govt.nz)
- UK Andy Willett - [andy.willett@ukho.gov.uk](mailto:andy.willett@ukho.gov.uk)
- USA Shepard Smith - [shep.smith@noaa.gov](mailto:shep.smith@noaa.gov)

All work by correspondence, fairly stable INT schemes so not much work at present.



# Initial Feedback on Experimental Procedure (IHO CL 64/2015: *Revised Management, Review and Monitoring of new INT Charts*)

- ✦ to date we haven't had any situations relating to CL64/2015 5 a,b,c,d.
- ✦ SWPHC coordinator yet to master the INTernational Chart Web Manager and successfully follow the Manager manual. No SWPHC charts appear at the General layer which is the only place we have had recent change of edition dates.
- ✦ Next SWPHC meeting is planned for Dec 2016 so expect to update the scheme around Sep 2016 ( 3 months prior)



# Lessons Identified, Main Issues, Relevance of Current IHO Standards and Procedures, Recommendations

- ✦ SWPHC is a fairly stable region in terms of INT Chart scheming.
- ✦ Current standards and procedures work for the countries involved
- ✦ A training course/ webinar for the INTernational Chart Web Manager would be useful.

