



Workshop for Regional INT Charts / ENC Coordinators

25 April 2016 (IHB, Monaco)

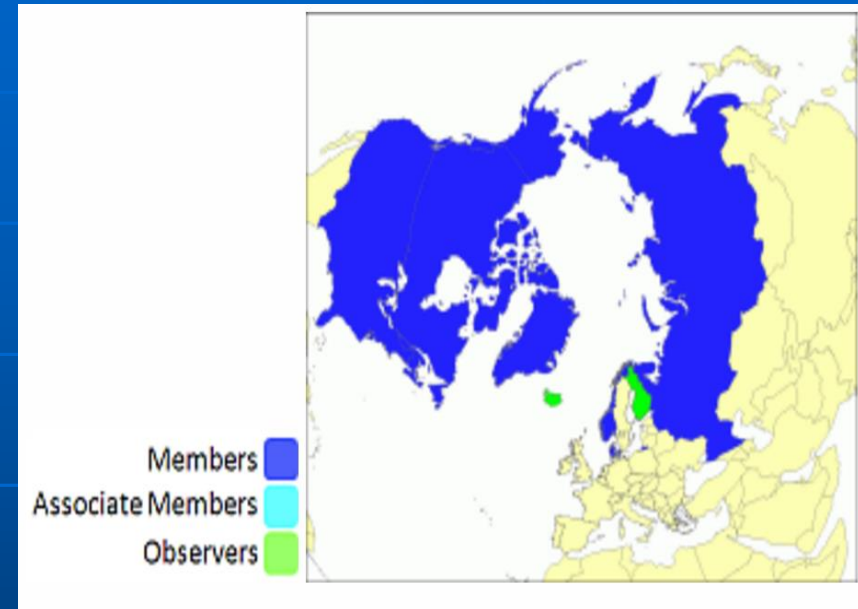
Agenda item 4: Self-assessment Reports by INT  
Charts/ENC Coordinators

Region N (Mr Kjetil Wirak)

# Region N, Arctic (ARHC)

## 1. Development and Maintenance of Integrated INT Chart / ENC Schemes

- Region N: the youngest Region.
- Established 2010.
- Number of INT charts are 8. All Norwegian and transferred from Region D.
- 4 new Norwegian coastal charts are planned issued as INT-charts.



**Chair:** Denis HAINS (Canada)  
**Vice-Chair:** Denmark (Name to be supplied)

**Members:** Canada, Denmark, Norway, Russian Federation, United States

**Observers:** Finland, Iceland



## Region N, Arctic (ARHC)

### 2. Allocation of Production Responsibilities, Coordination

- Production of INT charts, up to each country.
- Different approaches. Slow progress. Little response.

### 3. Risk Assessment & Nautical Studies, Support and Advice provided in the Region

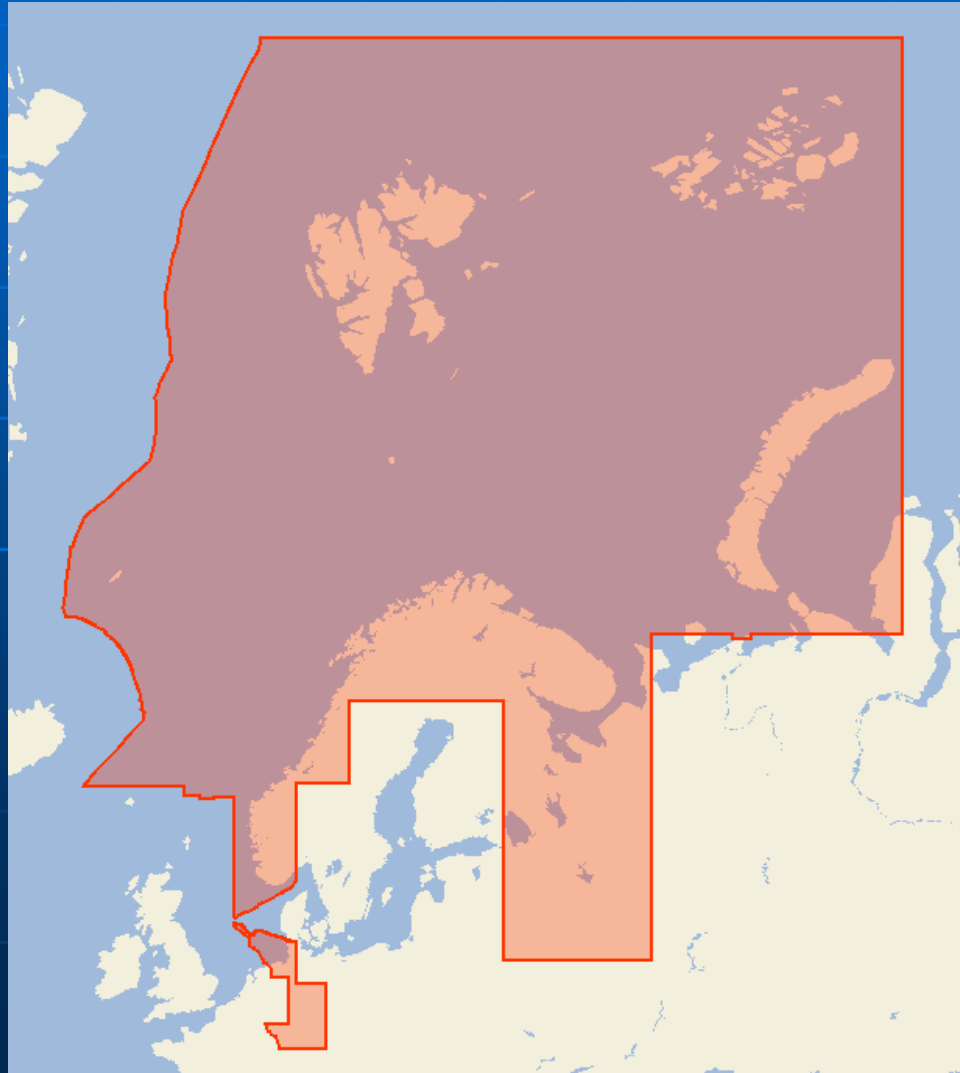
- No comments



## Region N, Arctic (ARHC)

### 4. Existence of a Region **N** ICCWG, Work by Correspondence, Workload

- Concerned of overview ENCs covering other nations EEZ.
- Challenges of maintain / update ENCs outside our Waters (source data, monitor NtMs).
- Difficult to ensure consistency between user bands in foreign areas.



## Region N, Arctic (ARHC)

### 5. Initial Feedback on Experimental Procedure (IHO CL 64/2015: Revised Management, Review and Monitoring of new INT Charts)

- We agree on the proposed procedure.

### 6. Lessons Identified, Main Issues, Relevance of Current IHO Standards and Procedures, Recommendations

- Not much experience.
- Hard do get things going...
- Need guidelines on how to organize ENC coverage between nations.

