

Paper for Consideration by NCWG

Proposal to update limit between Charting Region D and Charting Region E to S-4, A-204.8

Submitted by:	BSICCWG
Executive Summary:	Baltic Sea Hydrographic Commission have refined limit between Charting Region D and Charting Region E
Related Documents:	Minutes of BSHC24- Actions and Decisions (on preparation)
Related Projects:	

Introduction / Background

The limit between the Charting Region D (North Sea) and the Charting Region E (Baltic Sea) has been defined very imprecisely. Unlike other boundaries, it is defined in S-4 only graphically (S-4,A-204.8). In the other IHO publications, definition varies, depending on the publication (S-4, S-11, ENC catalog). In addition, the specified accuracy does not meet the requirements of today's GIS-systems.

BSHC (Baltic Sea Hydrographic Commission) had tasked BSICCWG (Baltic Sea International Charting Coordination WG) to refine the limit between Charting Region D and Charting Region E and to define more accurate coordinates. Baltic Sea Hydrographic Commission approved BSICCWG proposal in the BSHC24 meeting (11-12 September 2019).

BSHC 24 Decision: *To approve proposal to refine the definition of the existing limit between Charting Region D (North Sea) and Charting Region E (Baltic Sea) in accordance with S-23 by defining coordinates for GIS-purposes.*

Analysis / Discussion

There are various arguments to adjust a limit between Kattegat and Skagerrak:

1. The new proposed limit will follow the weather forecast areas in the region. See <https://www.smhi.se/en/weather/sweden-weather/sea-weather-forecast#ws=wpt-a,proxy=wpt-a,lang=en,area=none>
2. The new proposed limit will follow the Notice to Mariners and Navigational warnings areas. See <http://www.sjofartsverket.se/en/Maritime-services/Hydrographic-Information/NtM---Notices-to-mariners/>
3. The new proposed limit will follow the limit defined in the existing IHO version of S-23.

2.—Kattegat, Sound and Belts.

On the North.

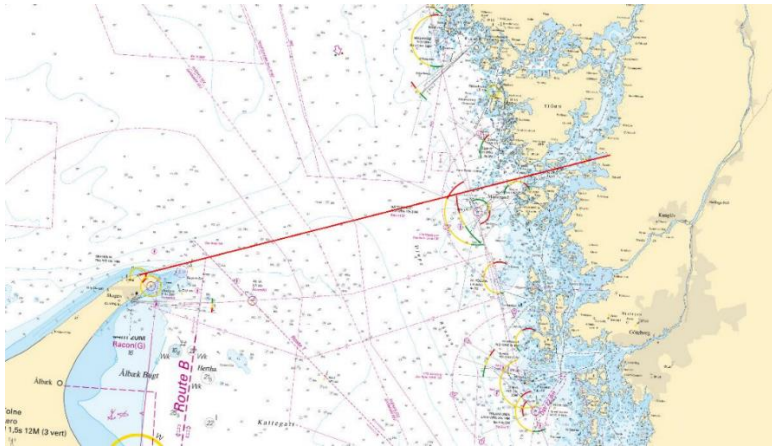
A line Joining Skagen (The Skaw, North Point of Denmark) and Paternoster Skær (57°54' N, 11°27' E) and thence Northeastward through the shoals to Tjörn Island.

4. The new proposed limit follows the existing definition which INT-chart belongs to the Charting Region D or to the Charting Region E in the IHO INT chart regime.

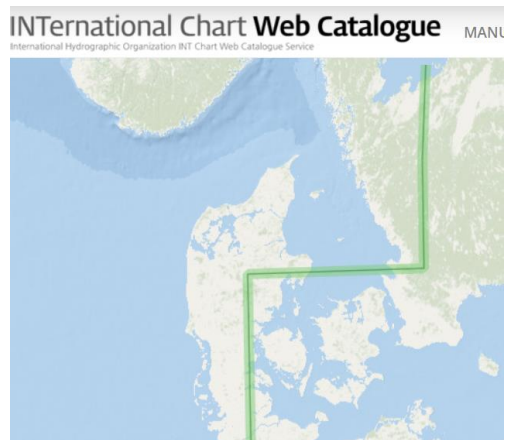
Coordinates proposed are N57° 45.0' and E10° 36.0' to N57° 57.0' and E11° 47.5'.

Feedback from NSICCWG (North Sea International Charting Coordination WG) did not include any objections.

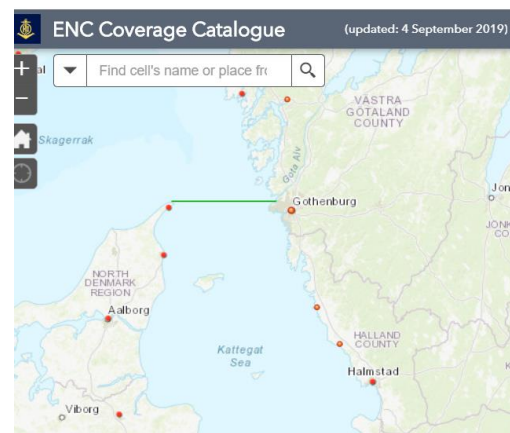
Refined limit between Charting Region E and D



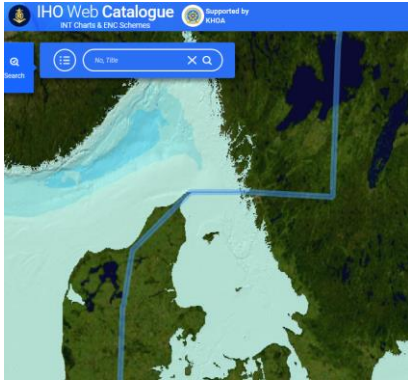
Existing status of limit between Charting Region D and Charting Region E



S-11 INT Chart Web Catalogue

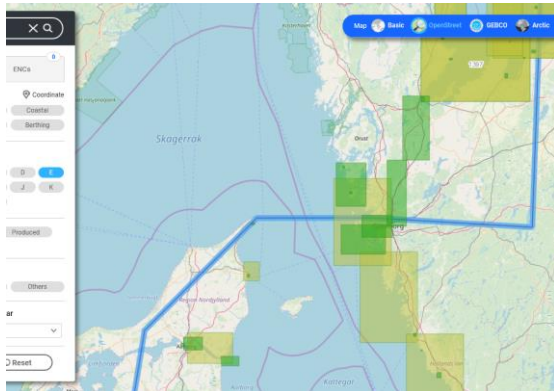


IHO ENC Catalogue

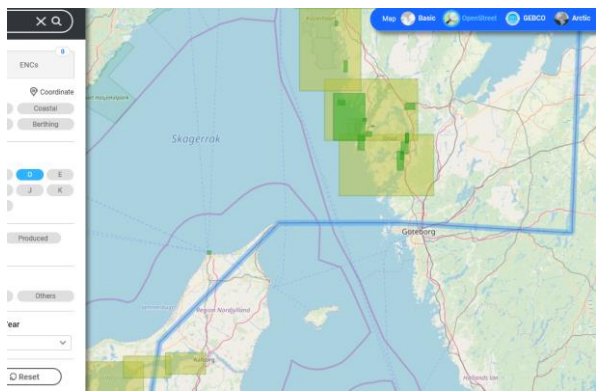


INToGIS Project II

IHO INT chart regime



INT charts (harbour, approach) Region E



INT charts (harbour, approach) Region D