



Office of Navigation Systems Future of Navigation



Future of Navigation

R. David Lewald

**Navigation Technology & Risk
Management Division**

Office of Navigation Systems



Office of Navigation Systems Future of Navigation



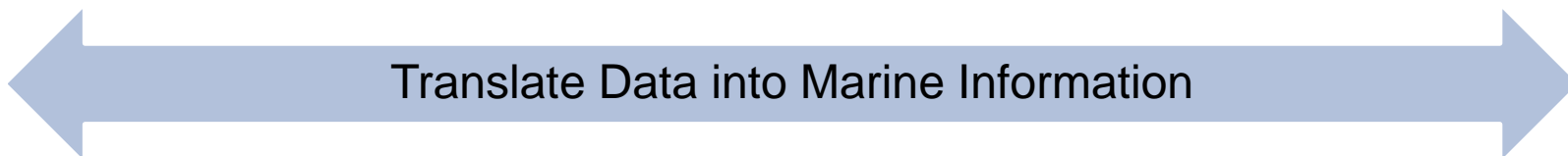
Hydro
ENC
Weather



Hydro
IENC
Notice to Marine Interest



ATON
Local Notice to Mariners
Broadcast Notice to Mariners





Office of Navigation Systems Future of Navigation



Outdated Delivery Method

Future Delivery Method

Office of Coast Survey

Chart: 14500, Current Edition: 27, Print Date: Oct./2002
Great Lakes, Lake Champlain to Lake of the Woods

US Army Corps of Engineers
PITTSBURGH DISTRICT

U.S. Department of Homeland Security
United States Coast Guard

LOCAL NOTICE TO MARINERS
District: 5 Week: 39/14

Coastal Waters from Shreveport River, New Jersey to Little River, South Carolina

LOCAL NOTICE TO MARINERS

COMMANDER, FIFTH COAST GUARD DISTRICT (dsw)
431 Crawford Street, Portsmouth, Virginia 23704
Telephone (Day): (757) 398-6552 or CGCWATERWAYS@uscg.mil

TO REPORT ANY Aids to Navigation DISCREPANCY REPORTING:

1. For PA, NJ, DE waters, coastal and tributaries contact COGARD SECTOR DELAWARE BAY (215) 271-4940.
2. For MD, DE in the Upper Chesapeake Bay and tributaries contact COGARD SECTOR BALTIMORE at (410) 576-2525.
3. For VA in Lower Chesapeake Bay below Smith Hook Light and tributaries and VA, MD Eastern Shore Bay and coastal contact COGARD SECTOR HAMPTON ROADS at (757) 483-8567.
4. For NC waters, coastal and tributaries contact COGARD SECTOR NORTH CAROLINA at (910) 343-3882.

REFERENCES

Light List: ATLANTIC COAST, VOLUME II, COMPTON P16902.2, 2014 Edition.
U.S. Coast Pilot 3, Atlantic Coast: Sandy Hook, NJ to Cape Henry, VA, 2013 (46th) Edition.
U.S. Coast Pilot 4, Atlantic Coast: Cape Henry, VA to Key West, FL, 2014 (46th) Edition.
All bearings are in degrees TRUE - All times are in Local Time unless otherwise noted.

NAVIGATIONAL INTERNET SITES

Fifth Coast Guard District Prevention Division BLDGPOT
<http://indiantribe.coastguard.dodhiv.navy.mil/>

2014 Light List Summary of Corrections
<http://www.navion.uscg.gov/index.php?pageName=lightListCorrections>

Bridges Public Notice Website
<http://www.navion.uscg.gov/?pageName=prBridges>

NOAA Chart Corrections and Chart Viewer
<http://www.nauticarts.noaa.gov/>

Coast Pilots, along with corrections are available at
<http://www.nauticarts.noaa.gov/md/pdownload.htm>

NOAA Chart Corrections applicable to any particular NOAA chart:
[http://ocdata.nrd.noaa.gov/mv/results/Lat.asp?Chart= \(apply specific chart number i.e. Chart 11548\)](http://ocdata.nrd.noaa.gov/mv/results/Lat.asp?Chart= (apply specific chart number i.e. Chart 11548))

DS LHM on Internet/Archived Back Issues for 2013/2014
<http://www.navion.uscg.gov/?pageName=dsIndexDistrictRegion=5>

Chesapeake Bay Weather Buoy
<http://www.cbos.org/>

Eds on Line
<http://www.tbsonline.noaa.gov/>

Tides, Currents, PORTS
<http://www.tbsonline.noaa.gov/>

Coast Guard District 5
<http://www.weather.gov/>

PORTS: t01010 Sunshine Skyway Bridge

- Light List
- Green Buoys
- Red Buoys
- Bridges
- Locks and Dams
- Docks
- Notices to Navigation Interests

Water Levels at St. Petersburg

Valid Time: 1154 (EDT) 05/04/2015
Observed Height: 2.32 ft
Predicted Height: 1.93 ft

Currents at Sunshine Skyway Bridge Along-Channel (60° T)

Valid Time: 1202 (EDT) 05/04/2015
Observed Current: 1.38 Knots
Predicted Current: 1.35 Knots

US5WA14M Puget Sound-Seattle to Bremerton (1:25,000)

WSP SEALTH (WAK7089)
116°M 1.43 NM from boat
CPA: 491 yd in 4 mins 31 secs
SOG: 17.8 kn COG: 286°M
Underway with engine
Passenger Ship
WSP TERMINAL

WENATCHEE WSP (WIC7337)
207°M 2.59 NM from boat
SOG: 0.10 kn COG: 250°M

WSP KITSAP (WVR3421)
204°M 4.29 NM from boat
SOG: 17.3 kn COG: 043°M

BHITTON (NBZ)
222°M 3.59 NM from boat

MATTHEW PERRY (NPR)
204°M 4.29 NM from boat

RAVEN'S DANCE (WDF7289)
217°M 4.52 NM from boat

MM53-636014217
028°M 5.62 NM from boat
SOG: 16.8 kn COG: 369°M

MM53-366993910
220°M 5.91 NM from boat
SOG: 0.40 kn COG: 231°M



Office of Navigation Systems Future of Navigation



Local Notice to Mariners (PDF) via USCG NAVCEN Web Page

MD – WILLIAM PRESTON LANE JR MEMORIAL BRIDGE – BRIDGE INSPECTIONS AND PAINTING

Mariners are advised that Blastech Enterprises, Inc., is planning to conduct painting on the Westbound span of the William P. Lane, Jr. Memorial (Chesapeake Bay Bridges) Bridges (US-50/301), across the Chesapeake Bay, between Sandy Point, Maryland and Kent Island, Maryland, from May 28, 2014, through December 31, 2014. Work is expected to occur seven days per week, from 7 a.m. to 7 p.m. The contractor will use a 238' x 52' x 12' barge which will be moored immediately east of the East Tower (Pier #39, position 38-59-27.30 N Lat, 076-59-02.3" W Lon) and will be held in place by four 10,000 pound anchors placed approximately 500' and 30 degrees from each corner of the barge. Interested mariners can contact Mr. Theo Mamouzelos via telephone at 727-744-8866, or can contact the U.S. Coast Guard Sector Baltimore Command Center at 410-576-2693. Chart 12270

Broadcast Notice to Mariners
via VHF Radio Marine Band
Broadcast

“The Navigation Lights on
William P. Lane Bridge have been
reported to be extinguished.”



**MSI
via Web
Service**

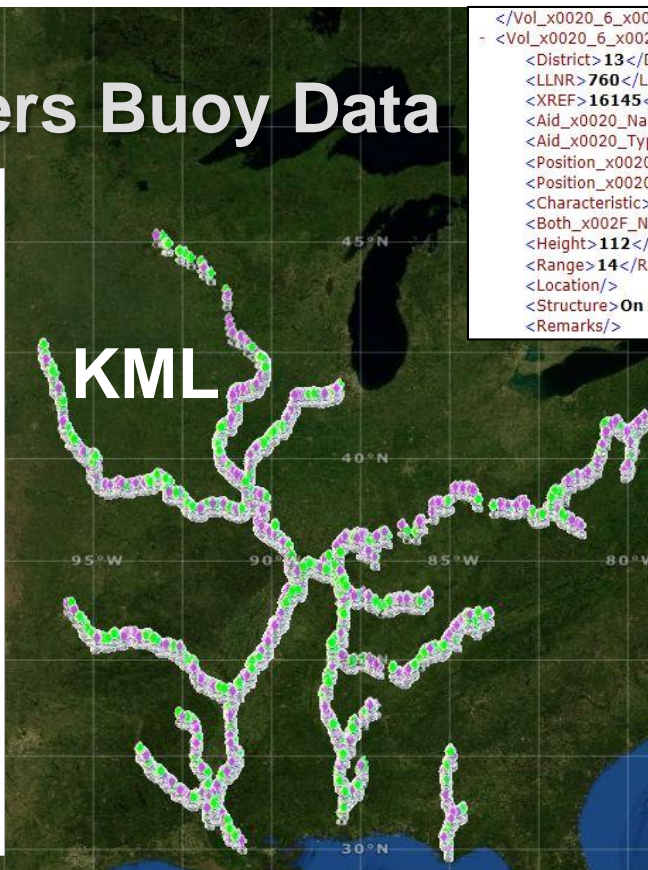
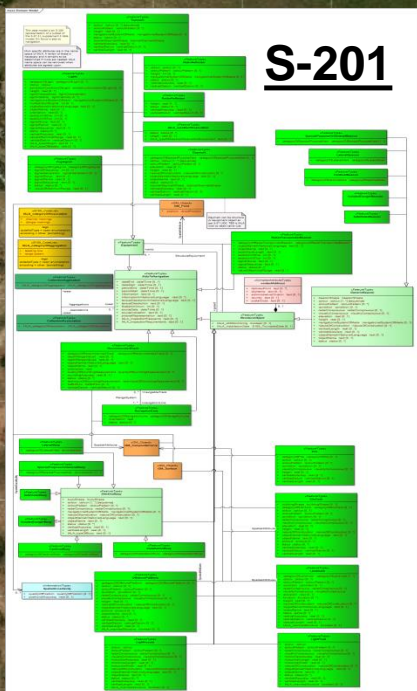
**MSI
via NAIS**



Office of Navigation Systems Future of Navigation



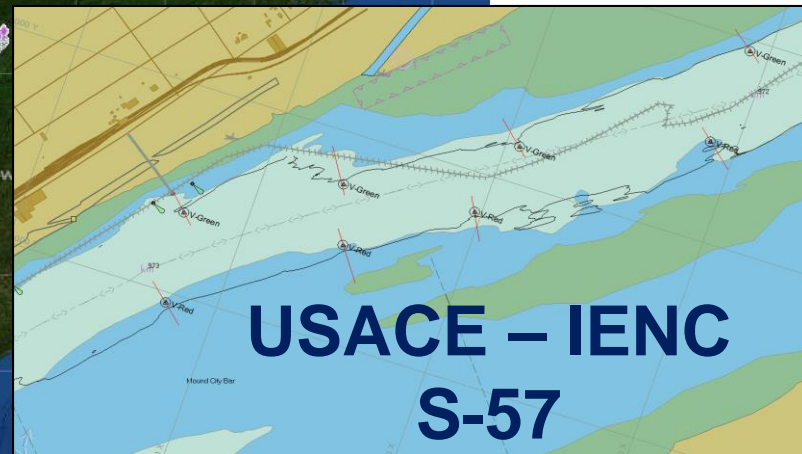
Western Rivers Buoy Data



```

</Vol_x0020_6_x0020_D13_x0020_LL_x0020_corr_x0020_thru>
- <Vol_x0020_6_x0020_D13_x0020_LL_x0020_corr_x0020_thru>
  <District>13</District>
  <LLNR>760</LLNR>
  <XREF>16145</XREF>
  <Aid_x0020_Name>Cape Flattery Light</Aid_x0020_Name>
  <Aid_x0020_Type>FD</Aid_x0020_Type>
  <Position_x0020_x0028_Latitude_x0029_>48-23-31.169N</Position_x0020_x0028_Latitude_x0029_>
  <Position_x0020_x0028_Longitude_x0029_>124-44-12.950W</Position_x0020_x0028_Longitude_x0029_>
  <Characteristic>FI (2)W 20s</Characteristic>
  <Both_x002F_Night_x002F_Day>Night</Both_x002F_Night_x002F_Day>
  <Height>112</Height>
  <Range>14</Range>
  <Location/>
  <Structure>On skeleton tower. 9</Structure>
  <Remarks/>
  
```

XML



River No.	Name and Location	Mile	Bank	Characteristic				Structure (Up/Down)		Remarks	Mile	Latitude	Longitude
				LITCHR	SIGGRP	COLOUR	SIGPER	INFOR M (1)	INFOR M (2)				
XLS	SORIND OBJNAM (1)	OBJNAM (2)		LITCHR	SIGGRP	COLOUR	SIGPER	INFOR M (1)	INFOR M (2)	STATUS			



Office of Navigation Systems Future of Navigation



Default Docking Environment Route Sea & P

45°00.000' S Man U37LM520 - ft Feet Center N UP TM Limits Off T Vect 6.0 min Profiles CID AIS Communication Failed
 000°00.000' E UE 1:20,000 STD Max No Route Loaded Synth 01 Dec 2017 16:25:54 Z ECDIS

HDG 000.0°T Man
 Man 000.0 °T
 COG --- °T
 Man
 STW 0.0 kn
 Man
 SOG 0.0 kn
 Man
 DBK 0.0 ft
 Man
 Ordered CSE --- °
 SPD --- kn
 Comp Set 090.0 °T
 Drift 0.0 kn
 Wind --- °R --- kn
 Route River
 Not in River
 Trip: 0.0 mi
 Depth Below Surface: 16.4 ft
 Draft: 5.0 m
 Surveying Dashboard

POS 45°00.000' S Man
 000°00.000' E DeadReckoning

COG --- Man
 SOG
 Bow P/S --- Source
 CCRP P/S 0.0 kn Man
 CCRP F/A 0.0 kn
 Stern P/S ---

ERBL1 ERBL2
 Curs ---°---' N
 ---°---' E
 --- NM ---° T
 TTG: ---:---:---
 FLW TRK
 VEGA 9.0 Rev B iHelp 1

Dashboard
 Surveying Trip Management
 Depth and Trip Data
 Depth Below Surface: 16.4 ft
 Miles Traveled: 0.0
 Mile Marker at Ownship: Unknown
 Draft: 5.0 m
 Buoy Work Mode
 Tend Buoys Drop Buoys
 Buoy Dropping
 Port Click for Mooring Details
 Port Click for Mooring Details
 Port Click for Mooring Details
 Port Click for Mooring Details
 Configure Quick-Drop Buttons
 Close Dashboard

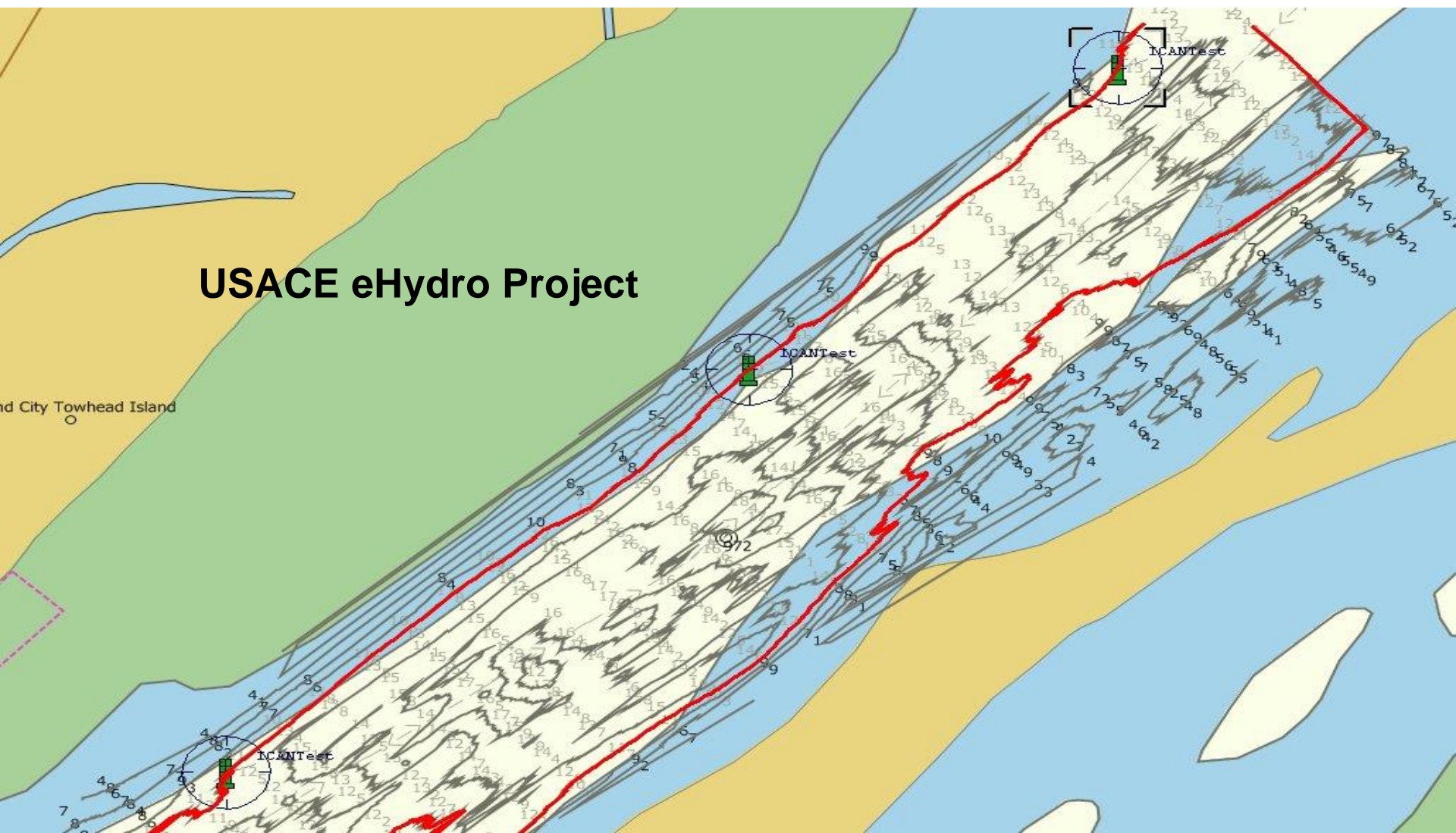
01 Dec 2017
 16:25:54 Z +0



Office of Navigation Systems Future of Navigation

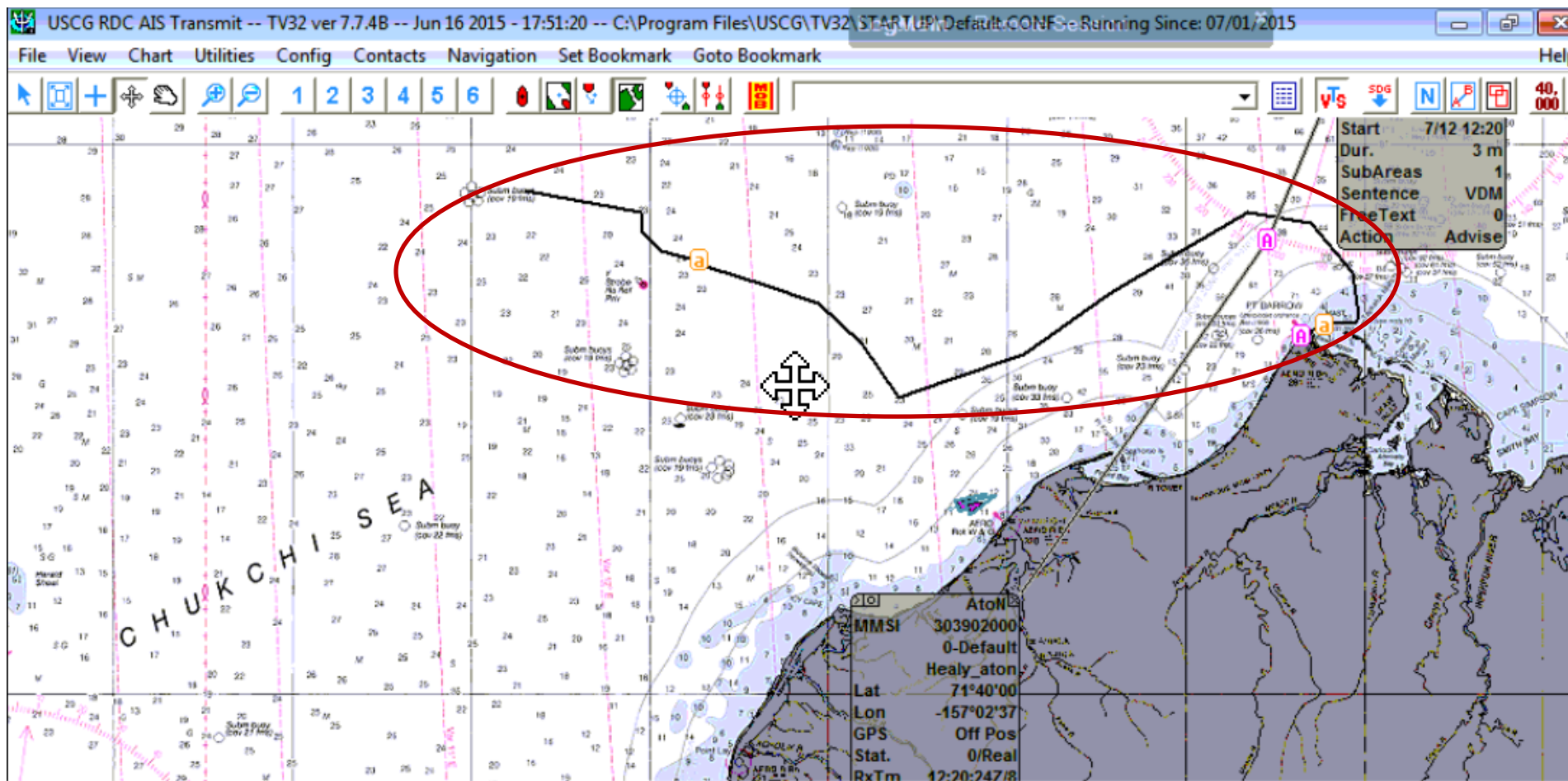


USACE eHydro Project



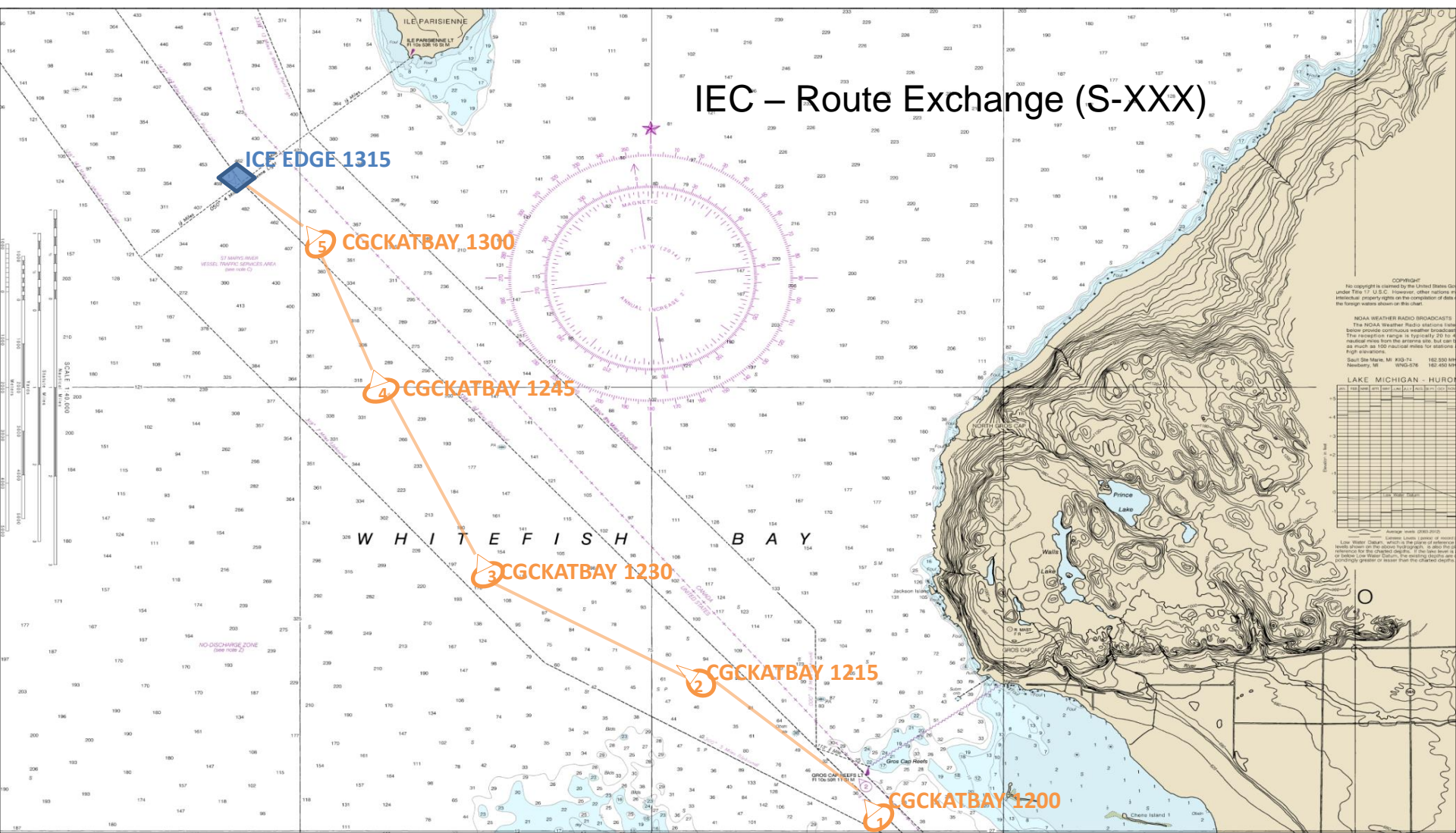


Office of Navigation Systems Future of Navigation





Office of Navigation Systems Future of Navigation





Office of Navigation Systems Future of Navigation



Questions?



Robert.D.Lewald@uscg.mil