



BUNDESAMT FÜR
SEESCHIFFFAHRT
UND
HYDROGRAPHIE

Provision of Nautical Information

Tuesday, 29 January 2019

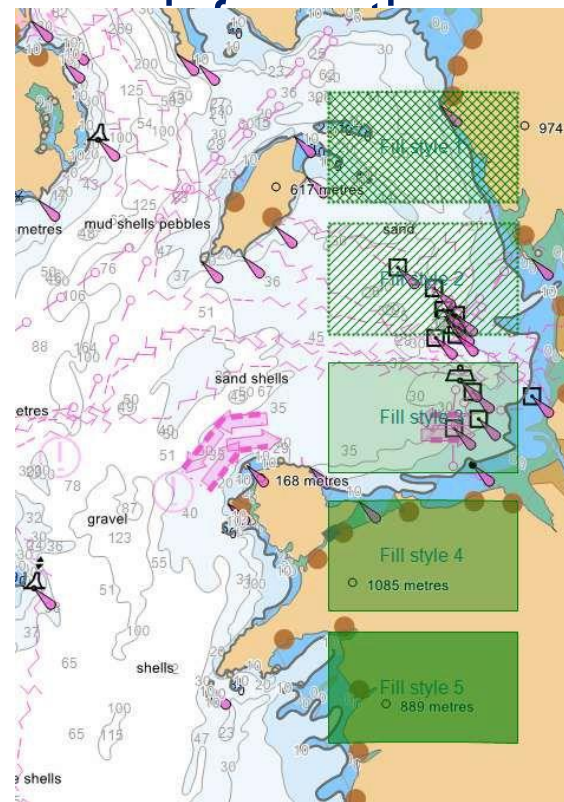


Customer

- Mariners
 - Professional mariners
 - Endless list of different interests
 - Leisure mariners
- Maritime Administrations
 - Endless list of stakeholders
- Private Industries
- Research facilities
- ...

Portrayal specification

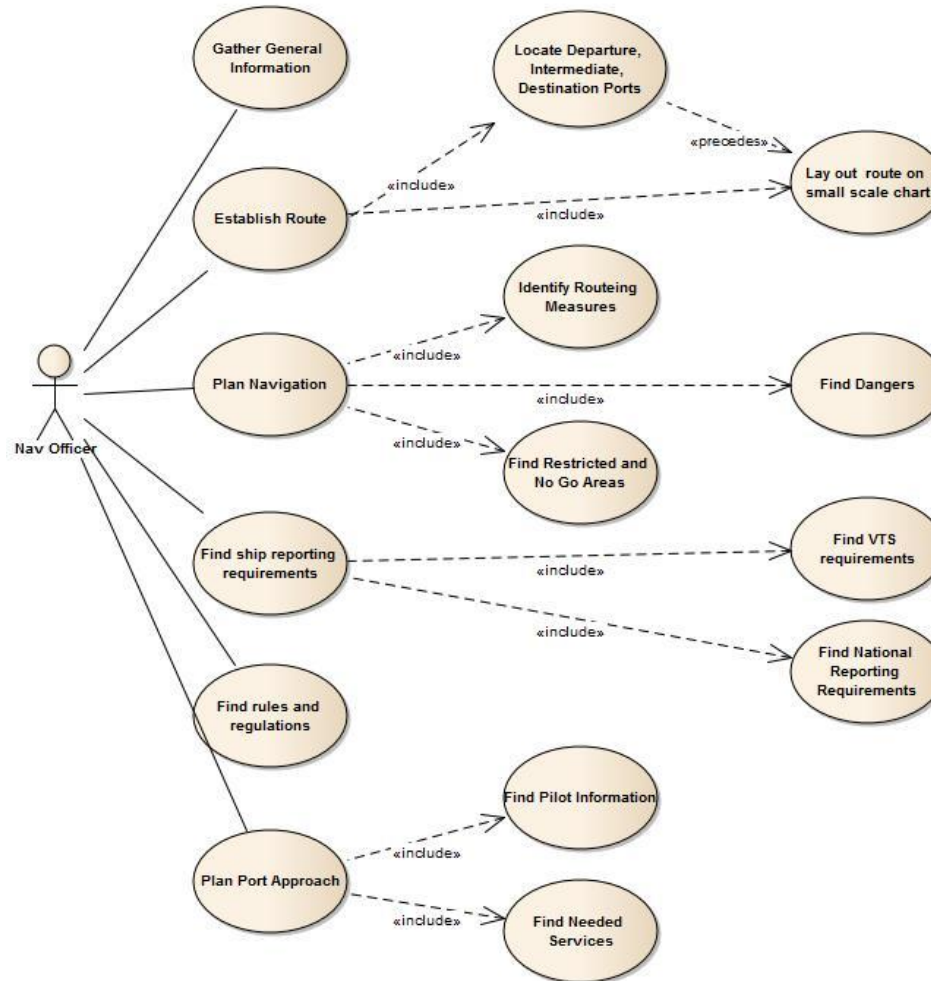
IHO –provides portrayal
specification for charted



ECDIS manufacturers should write software
providing access to nautical information for the
mariner

Other data user might require other ways of data
presentation

Determine customer's interests



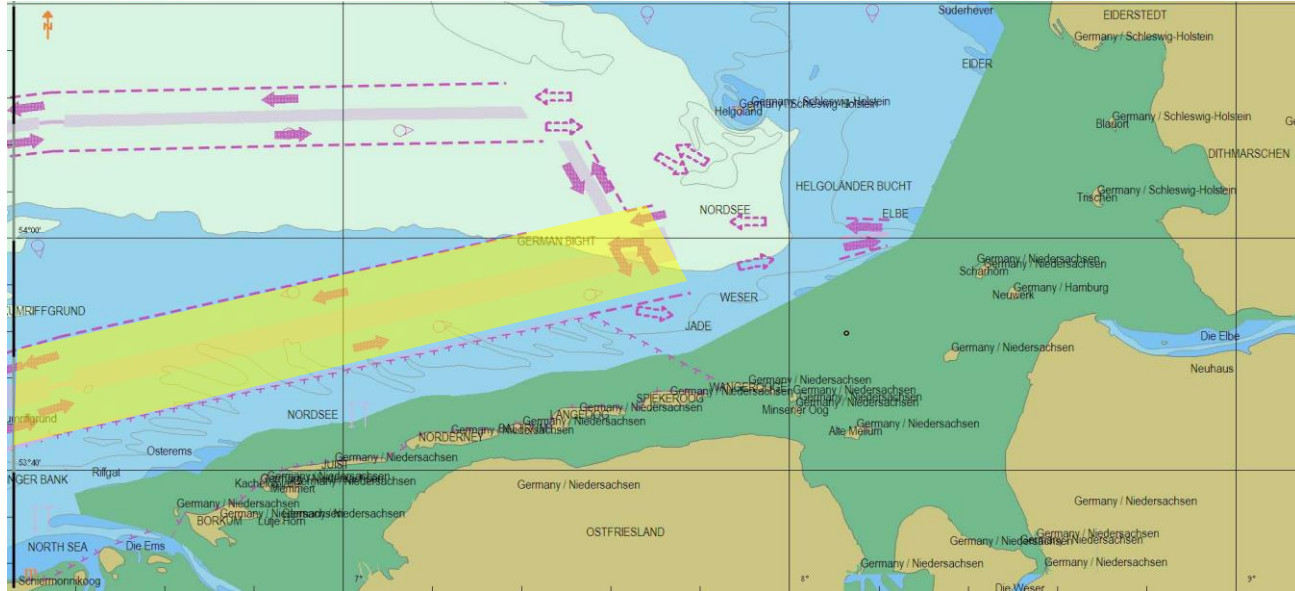
Provision of information



BUNDESAMT FÜR SEESCHIFFFAHRT UND HYDROGRAPHIE

NAVIGATION		NATURAL CONDITIONS		COMMUNICATIONS		LAWS AND REGULATIONS		GENERAL INFORMATION
Routeing	Ports	VTS	Reporting	Pilots	Areas	Berthing	HELP	

- Routes ▶
- Ports ▶
- Port facilities ▶
- Navigation aids ▶
- Reporting systems ▶
- VTS ▶
- Protected areas ▶
- Natural conditions ▶
- Special areas ▶
- National jurisdictions ▶
- Dangers ▶
- Work areas ▶
- Radio services ▶



Search Results

Routes	Ports
Port facilities	Navigation Aids
Reporting systems	VTS
Protected areas	Natural conditions
Special areas	Countries
Dangers	Work areas
Radio services	none

TSS German Bight

- Tanker route
- Tangarhaug-Tormodsvården
- Nordskot - Ullanhaugtårnet
- Kjerten - Brønnesskjæra
- Course for Stora Snøde

Settings

Search radius: NM

Provision of information



BUNDESAMT FÜR SEESCHIFFFAHRT UND HYDROGRAPHIE

Find Rules and Regulations

NAVIGATION		NATURAL CONDITIONS		COMMUNICATIONS		LAWS AND REGULATIONS		GENERAL INFORMATION
Routeing	Ports	VTS	Reporting	Pilots	Areas	Berthing	HELP	

- Routes ▶
- Ports ▶
- Port facilities ▶
- Navigation aids ▶
- Reporting systems ▶
- VTS ▶
- Protected areas ▶
- Natural conditions ▶
- Special areas ▶
- National jurisdictions ▶
- Dangers ▶
- Work areas ▶
- Radio services ▶

Search Results

REGULATIONS, RESTRICTIONS, RECOMMENDATIONS		
Regulations	Category of Authority	Maritime
	Vessels Included	Tanker, unspecified dangerous or hazardous cargo, Gross Tonnage >= 10000 GT
	Vessels Included	Tanker, unspecified dangerous or hazardous cargo, Gross Tonnage >= 5000 GT
	Information	The route should be joined or left at the point closest to the port of destination or departure which permits safe passage between the route and the port.
Regulations	Category of Authority	Maritime
	Information	navigating according to Rule 10 of COLREGS

AREAS		
Sea area	Name	TSS German Bight
	More information	==>

REGULATIONS, RESTRICTIONS, RECOMMENDATIONS		
Regulations	Category of Authority	Maritime
	Vessels Included	Tanker, unspecified dangerous or hazardous cargo, Gross Tonnage >= 10000 GT
	Vessels Included	Tanker, unspecified dangerous or hazardous cargo, Gross Tonnage >= 5000 GT
	Information	The route should be joined or left at the point closest to the port of destination or departure which permits safe passage between the route and the port.
Regulations	Category of Authority	Maritime
	Information	navigating according to Rule 10 of COLREGS

Nordköt - Ullanflugtårnet

Kjerten - Brønnesskjæra

Course for Stora Snøde

Settings

Search radius: NM

Provision of information



BUNDESAMT FÜR
SEESCHIFFFAHRT
UND
HYDROGRAPHIE

NAVIGATION		NATURAL CONDITIONS		COMMUNICATIONS		LAWS AND REGULATIONS		GENERAL INFORMATION	
Routing	Ports	VTS	Reporting	Pilots	Areas	Berthing	HELP		

- Routes >
- Ports >
- Port facilities >
- Navigation aids >
- Reporting systems >
- VTS >
- Protected areas >
- Natural conditions >
- Special areas >
- National jurisdictions >
- Dangers >
- Work areas >
- Radio services >

Search Results

Routes	Ports
Port facilities	Navigation Aids
Reporting systems	VTS
Protected areas	Natural conditions
Special areas	Countries
Dangers	Work areas
Radio services	none

Berths

Waste disposal

Settings

Search radius: NM

Search by...

- Point
- Route
- Area

Provision of information



BUNDESAMT FÜR
SEESCHIFFFAHRT
UND
HYDROGRAPHIE




Figure C 2.1.1: Lighthouse Dahmeshöved from SE

Shipping Restrictions

Military Exercises

See [Section A 1.6](#)

Fishing

See also [Section A 1.4](#)

Trawling operations: outside the 20 m. depth contour up to 1.5 nm distance from the coast; from 01 November to 30 April

Natural Conditions

Currents

Strong steady E winds

[C2.1.1 Fehmarn to Neustädter Bucht](#)
[C2.1.2 Neustädter Bucht](#)
C2.1.2* Grossenbroder Binnensee

[C2.2.1 Travemünde and Trave](#)
[C2.2.2 Lübeck](#)

BALTIC HANDBOOK III
SEE [SECTION C2.1](#)
Fehmarn to Travemünde

SEE [SECTION C2.2](#)
Travemünde and Lübeck

Click topics or map objects



Provision of information



BUNDESAMT FÜR
SEESCHIFFFAHRT
UND
HYDROGRAPHIE

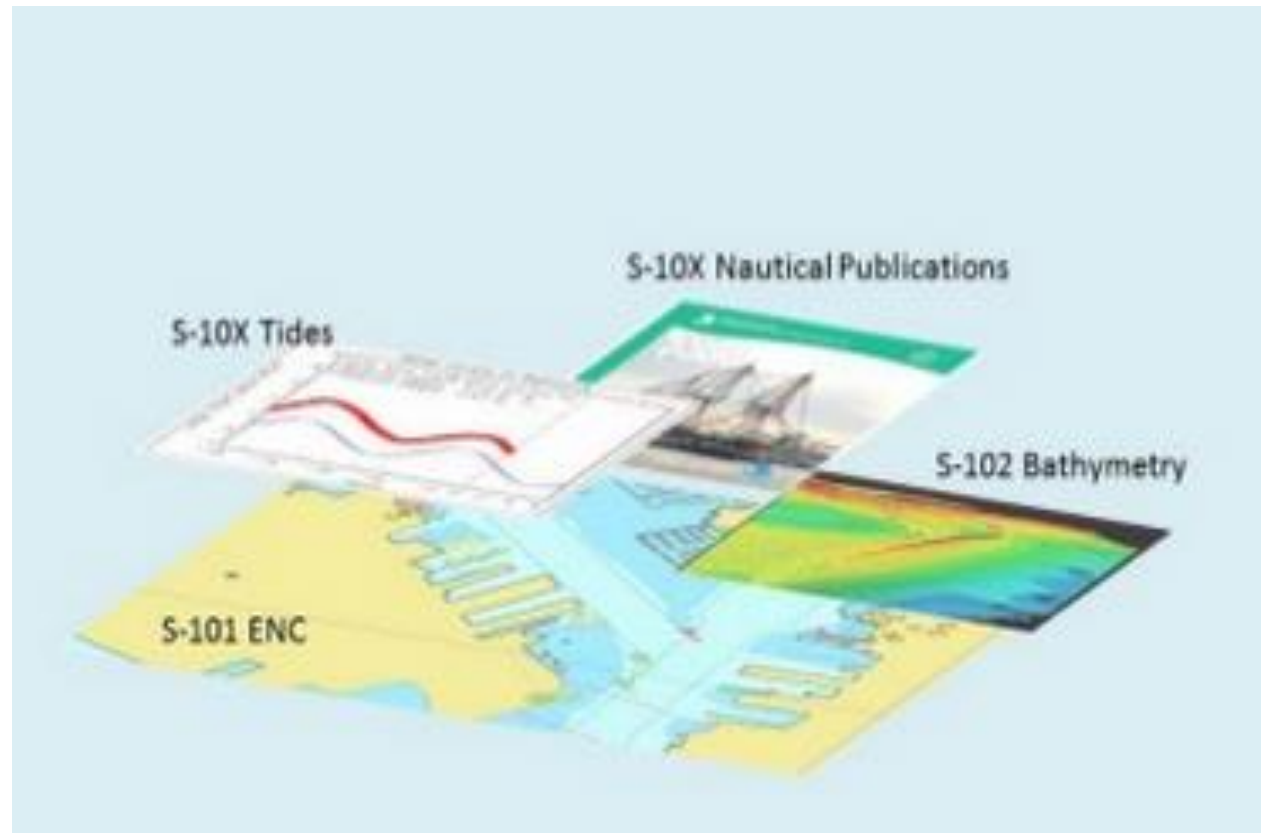
Back-of-bridge

Front-of-bridge

Interoperability

Overlay

Autonomous shipping



Summary



BUNDESAMT FÜR
SEESCHIFFFAHRT
UND
HYDROGRAPHIE

Data quantity

Data access

Connection between data

Interaction between data

