

Summary of Change Proposals

Presented by SPAWAR

for S100WG4

Feb 2019

4.7 - Palette Support for Symbols

- A stylesheet (CSS file) is used to provide colour lookups for SVG symbols
- Desired functionality
 - When the user changes the colour palette, re-render symbols using the appropriate stylesheet
- Issue
 - A unique stylesheet is needed for each colour palette
 - The CSS files can only reference a single stylesheet (svgStyle.css)
 - The schemas provide no relationship between a colour palette and a stylesheet

4.7 - Palette Support for Symbols

- Prior Work
 - S-100WG2-8.9, items 6-7
 - Several mechanisms were proposed at and following TSM6
- Proposal
 - Provide a “css” attribute to each colour palette, identifying the related stylesheet
- Implementation details
 - Simple update to portrayal_catalogue.xml
 - HTML viewers (e.g. portrayal registry): use JavaScript to replace *xml-stylesheet href* with appropriate filename
 - ECDIS: replace *href*, swap css file, or use custom code
- Supported in S100Viewer v1.6

4.7 – Palette Support for Symbols

Before

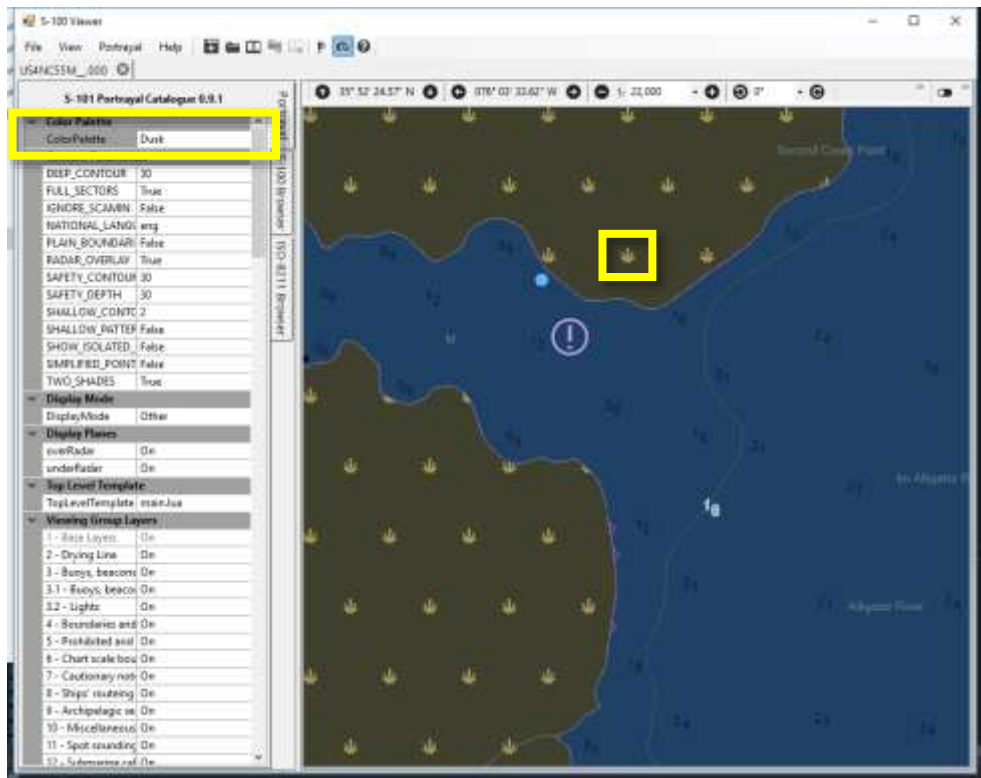
```
<?xml version="1.0" encoding="ISO-8859-1"?>
- <colorProfile xsi:noNamespaceSchemaLocation="s100ColorProfile.xsd" xmlns
  + <colors>
  + <palette name="Day">
  + <palette name="Dusk">
  + <palette name="Night">
</colorProfile>
```

After

```
<?xml version="1.0" encoding="ISO-8859-1"?>
- <colorProfile xsi:noNamespaceSchemaLocation="s100ColorProfile.xsd" xmlns
  + <colors>
  + <palette name="Day" css="daySvgStyle.css">
  + <palette name="Dusk" css="duskSvgStyle.css">
  + <palette name="Night" css="nightSvgStyle.css">
</colorProfile>
```

4.7 - Palette Support for Symbols

S100Viewer 1.5
(symbols always use Day palette)



S100Viewer 1.6
(symbols use correct palette)

