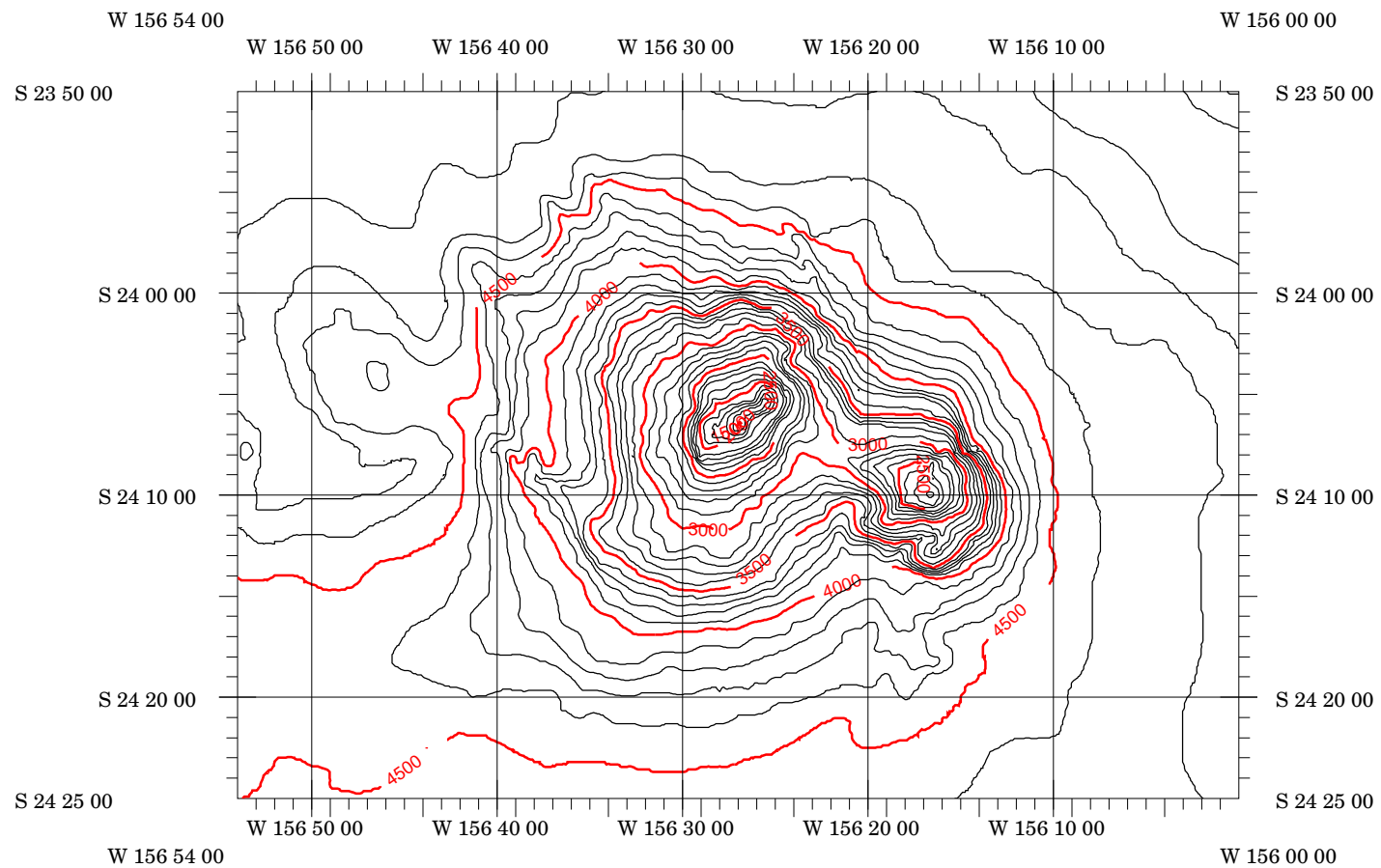


# Undersea Feature

CI = 100 meter



Mon Mar 19 12:55:59 2007  
Merc. Projection - PS 6.000000  
Scale 1:667014 at Lat. -24.12

## LEGEND

Depths in meters at 1500 meters per second

CONTOUR INTERVAL: 100.000  
Grid Size: 0.100 min./ 250.306 mtrs.

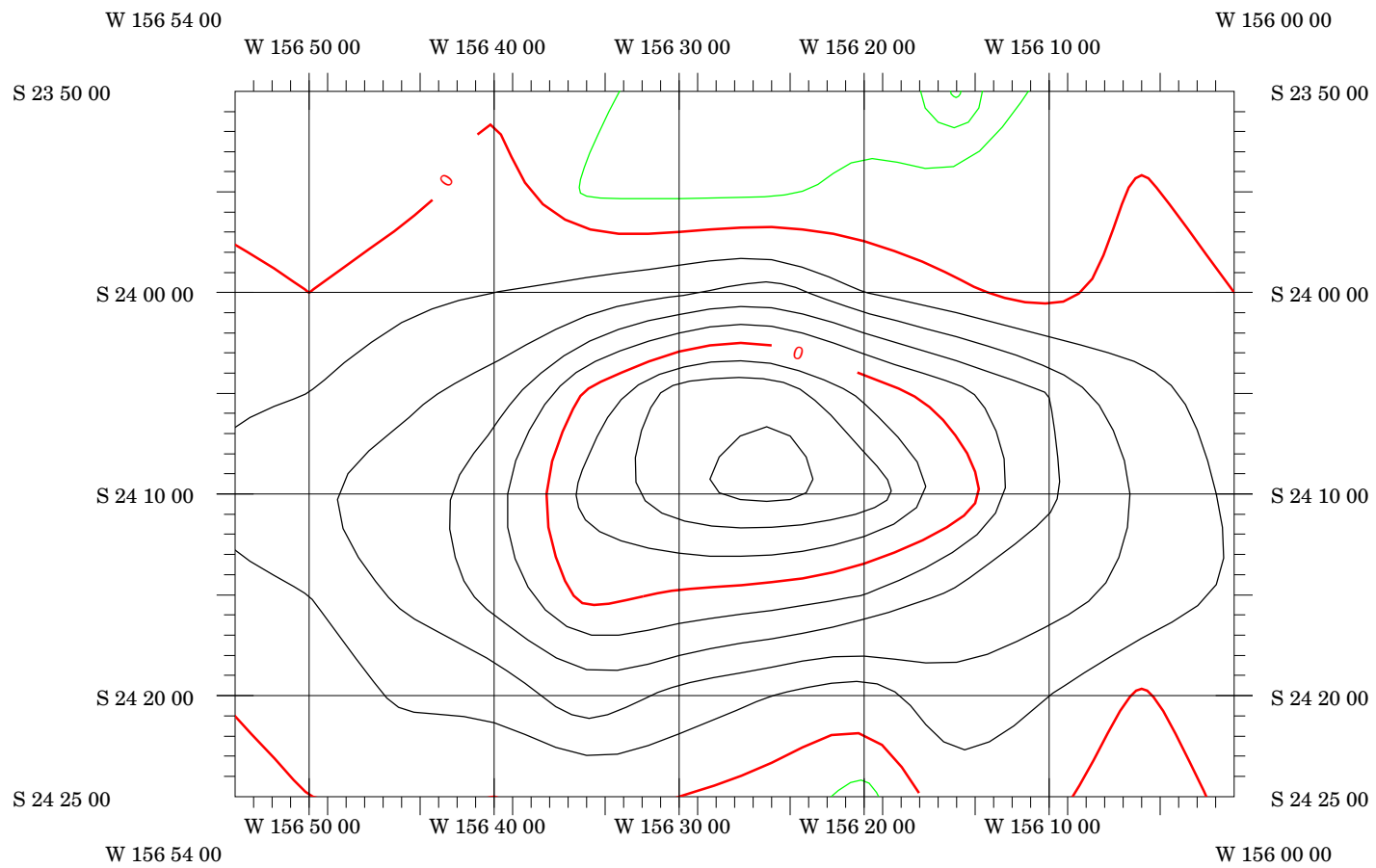
**UNCLASSIFIED**

APPROVED FOR PUBLIC RELEASE  
DISTRIBUTION UNLIMITED

**DO NOT USE FOR NAVIGATION**

# 5 Minute GeoSat

CI = 0.05cm



Mon Mar 19 12:57:47 2007  
Merc. Projection - PS 6.000000  
Scale 1:667014 at Lat. -24.12

## LEGEND

Depths in meters at 1500 meters per second

CONTOUR INTERVAL: 0.050  
Grid Size: 5.000 min./ 12517.114 mtrs.

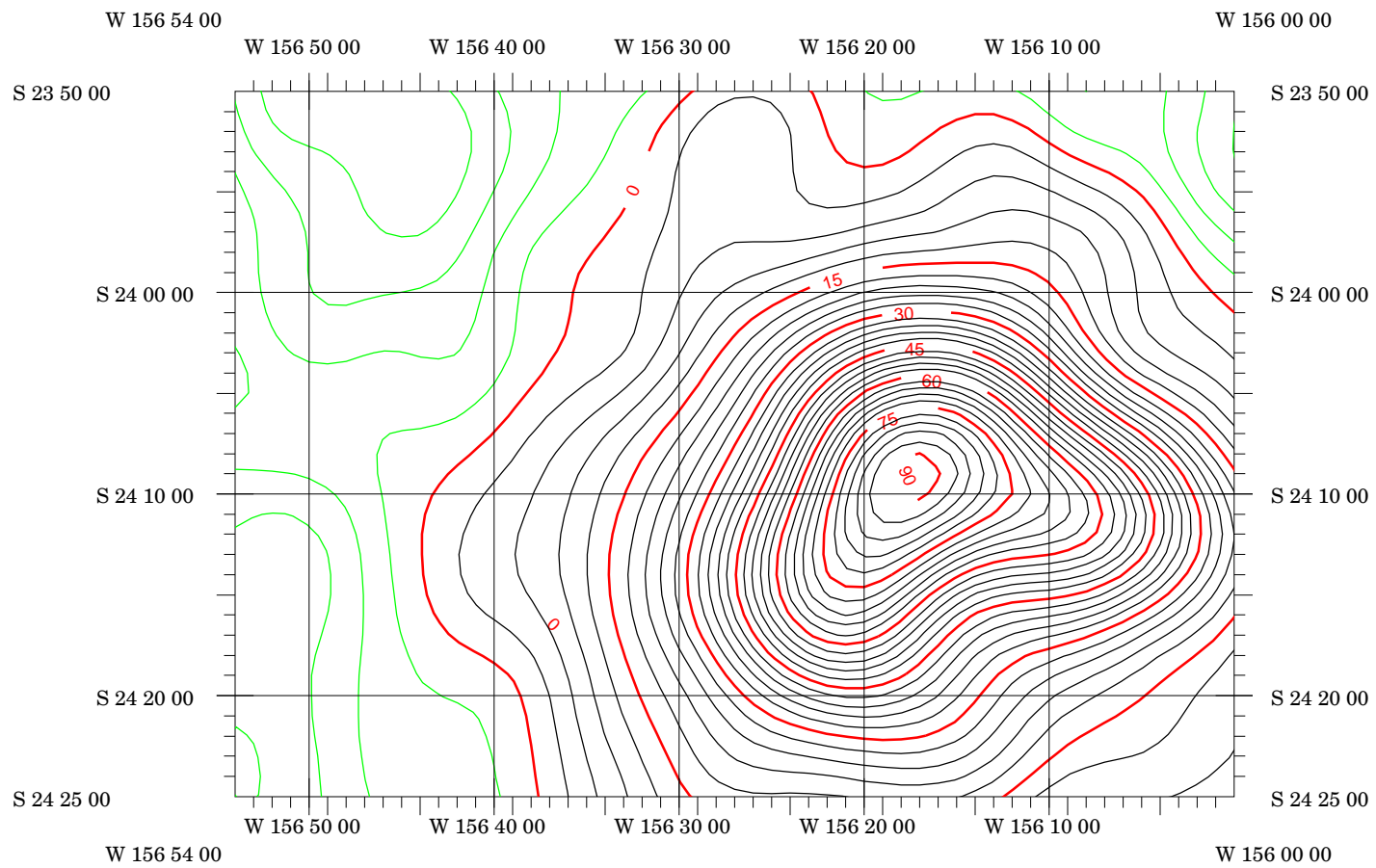
# UNCLASSIFIED

APPROVED FOR PUBLIC RELEASE  
DISTRIBUTION UNLIMITED

## DO NOT USE FOR NAVIGATION

# 1 Minute Gravity

CI = 3 mGal



Mon Mar 19 12:58:59 2007  
Merc. Projection - PS 6.000000  
Scale 1:667014 at Lat. -24.12

## LEGEND

Depths in meters at 1500 meters per second

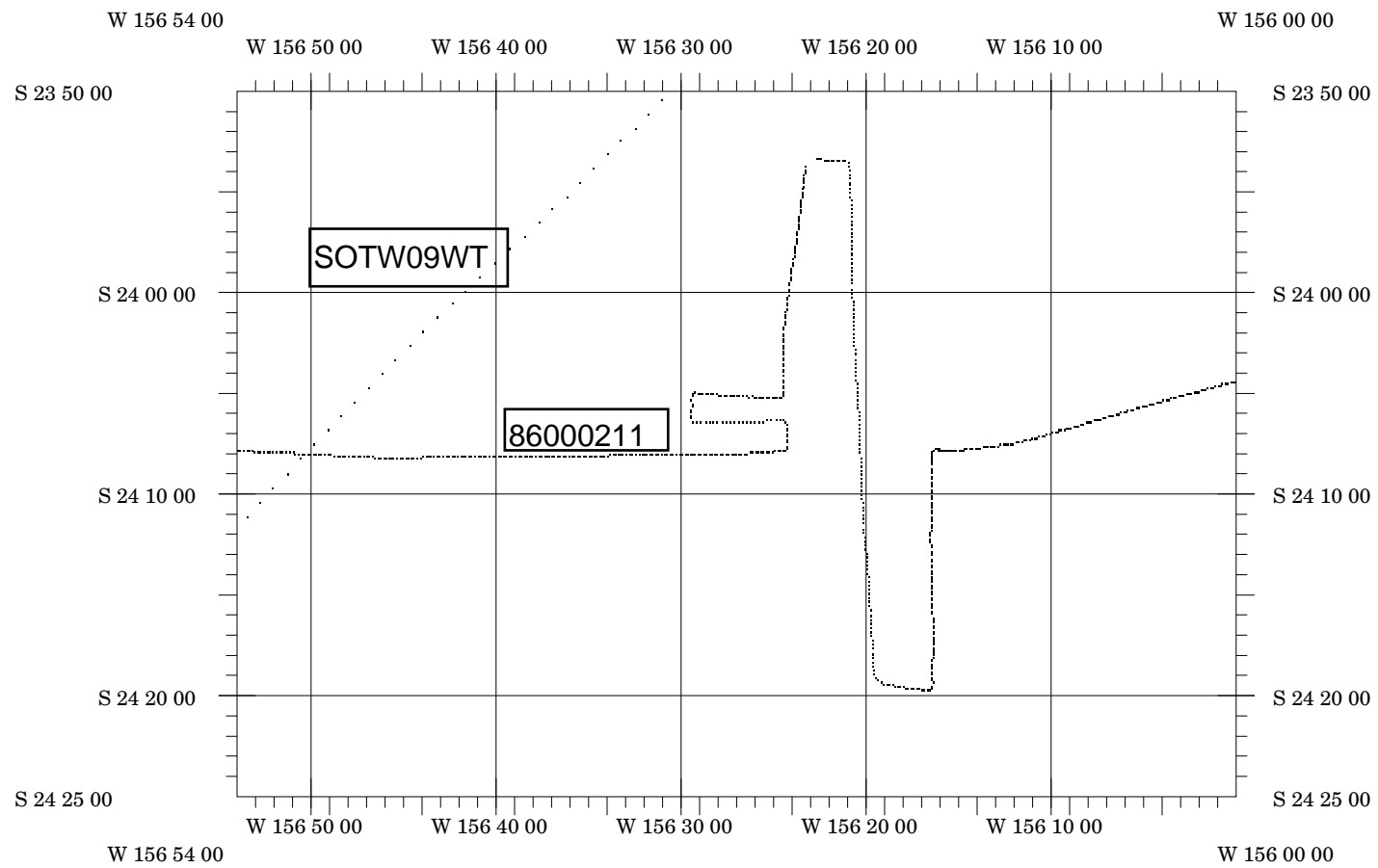
CONTOUR INTERVAL: 3.000  
Grid Size: 1.000 min./ 2503.129 mtrs.

**UNCLASSIFIED**

APPROVED FOR PUBLIC RELEASE  
DISTRIBUTION UNLIMITED

**DO NOT USE FOR NAVIGATION**

# Ship Tracks



Fri Mar 23 07:15:52 2007  
Merc. Projection - PS 6.000000  
Scale 1:667014 at Lat. -24.12

**UNCLASSIFIED**

APPROVED FOR PUBLIC RELEASE  
DISTRIBUTION UNLIMITED

**DO NOT USE FOR NAVIGATION**