

UNDERSEA FEATURE NAME PROPOSAL

Ocean or Sea: [Yellow Sea](#)

Name Proposed: [Gageo Reef](#)

Coordinates: A – of midpoint or summit: Lat. [33° 56′ 20″N](#) Long. [124° 35′ 44″E](#)
[48 kilometres in W direction from Soheuksan Do \(‘Do’ means island\)](#)

B – extremities (if linear feature):

Lat.	to	Lat.
Long.		Long.

Description (kind of feature): [Reef](#)

Identifying or categorizing characteristics (shape, dimensions, total relief, least depth, steepness, etc.):

[Gageo Reef is a typical reef with a minimum depth of 7.8m. The feature is located west of Soheuksan Do. A recognized variant name of the island is “Gageo Do.”](#)

Associated features:

Chart reference:

Shown with name on chart No. [849\(scale 1:2.5 mln\)](#), [836\(1:1 mln\)](#), [101\(1:1.5 mln\)](#),
[808\(1:1.1 mln\)](#) and [802\(1:1 mln\)](#) Published by Korea

Shown but not named on chart No. _____

Not shown but within area covered by chart No. _____

Reason for choice of name (if a person, state how associated with the feature to be named):

[Gageo originates from the name of a nearby island, Gageo Do \(where “Do” means “island.”\) Although the official name of the island is “Soheuksan Do,” the island has been commonly been called “Gageo Do” for more than 100 years. In view of the common usage, Gageo Reef is the proposed name of the feature.](#)

Discovery facts:

Date: [Apr. - Sep. 1991](#) by (ship): [Busan 805](#)

By means of (equipment): [Single-Beam Echosounder \(DESO-20, Krupp Atlas\)](#)

Navigation used: [Hyper-Fix \(Racal\)](#)

Estimated positional accuracy in nautical miles: [± 0.0027 miles](#)

Date: [Mar. 2008](#) by (ship): [Hwanghaero](#)

By means of (equipment): [Multi-Beam Echosounder \(EM-3002, Kongsberg\)](#)

Navigation used: [DGPS \(Seatex Seapath, Kongsberg\)](#)

Estimated positional accuracy in nautical miles: [± 0.001 miles](#)

Description of survey (track spacing, line crossings, grid network, etc.):

[The line spacing of survey tracks was less than 30m with single-beam echosounder system and less than 125m in order to ensure 100 % coverage of the multi-beam system.](#)

Nature and repository of other survey activities (dredge samples, cores, magnetics, gravity, photographs, etc.):

[Dredge samples.](#)

Supporting material (enclose, if possible, a sketch map of the survey area, profiles of the features, etc., with reference to prior publication, if any):

[See attached bathymetric maps, 3-D image maps, and survey track chart.](#)

Submitted by: [The Korea Committee on Marine Geographical Names, Republic of Korea](#)

Date: [April 25, 2008](#)

Address: [1-17, 7-ga Hang-dong, Jung-gu, Incheon, 400-800, Republic of Korea](#)

[Tel : +82 32 885 3825](#)

[Fax : +82 32 885 3088](#)

Concurred in by (if applicable):

National Authority (if any): [National Oceanographic Research Institute](#)

Address: [1-17, 7-ga Hang-dong, Jung-gu, Incheon, 400-800, Republic of Korea](#)

[Tel : +82 32 885 3825](#)

[Fax : +82 32 885 3088](#)

Note: this form should be forwarded, when completed:

a) If the undersea feature is located in territorial waters :-

to your "National Authority of Undersea Feature Names" or, if this does not exist or is not known, either to the International Hydrographic Bureau or to the Intergovernmental Oceanographic Commission (see addresses below) ;

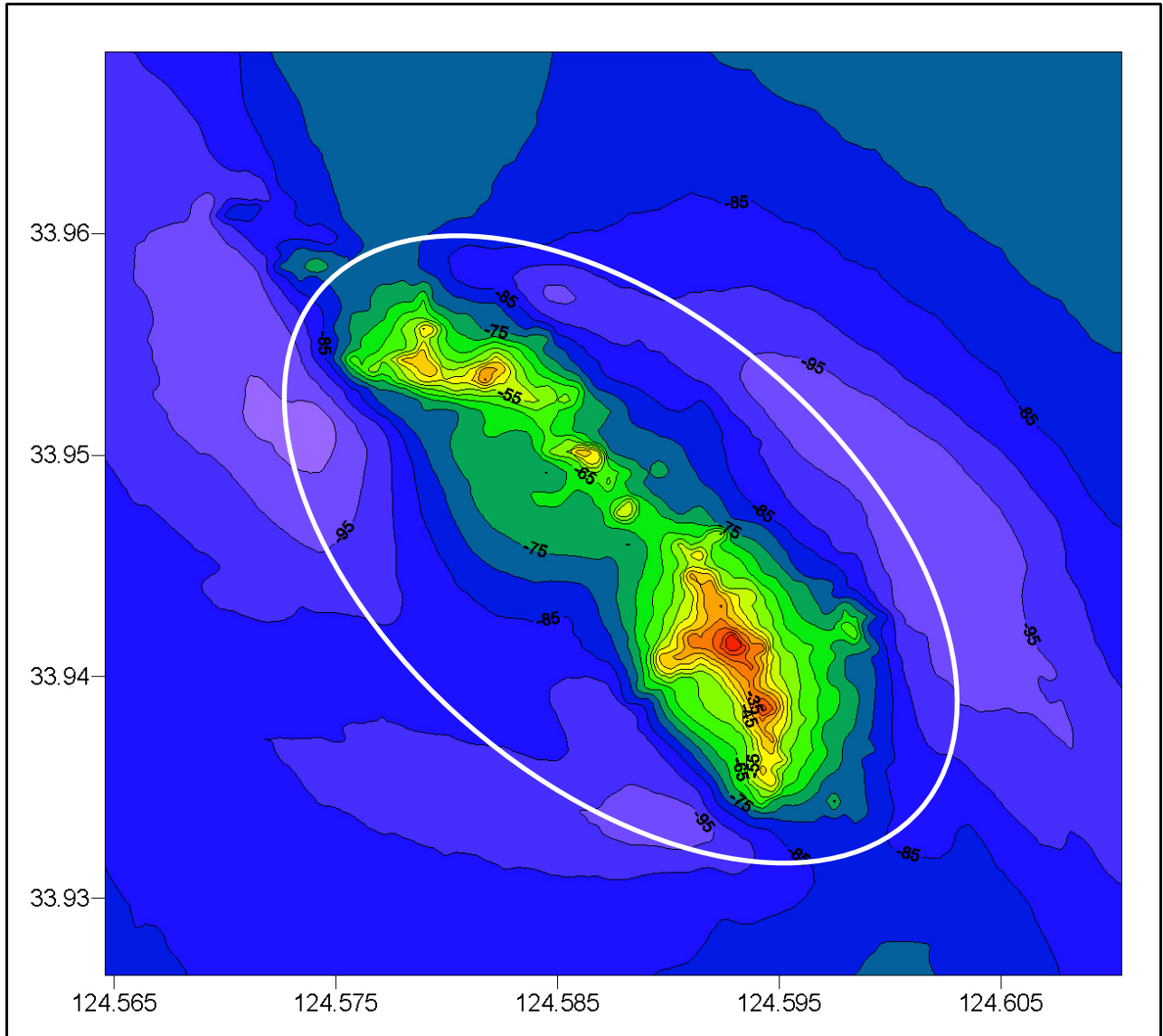
b) If the undersea feature is located in international waters :-

to the International Hydrographic Bureau or to the Intergovernmental Oceanographic Commission, at the following addresses :

International Hydrographic Bureau
4, quai Antoine 1er
B.P. 445
MC 98011 MONACO CEDEX
Principality of MONACO
Fax: +377 93 10 81 40
E-mail: info@ihb.mc

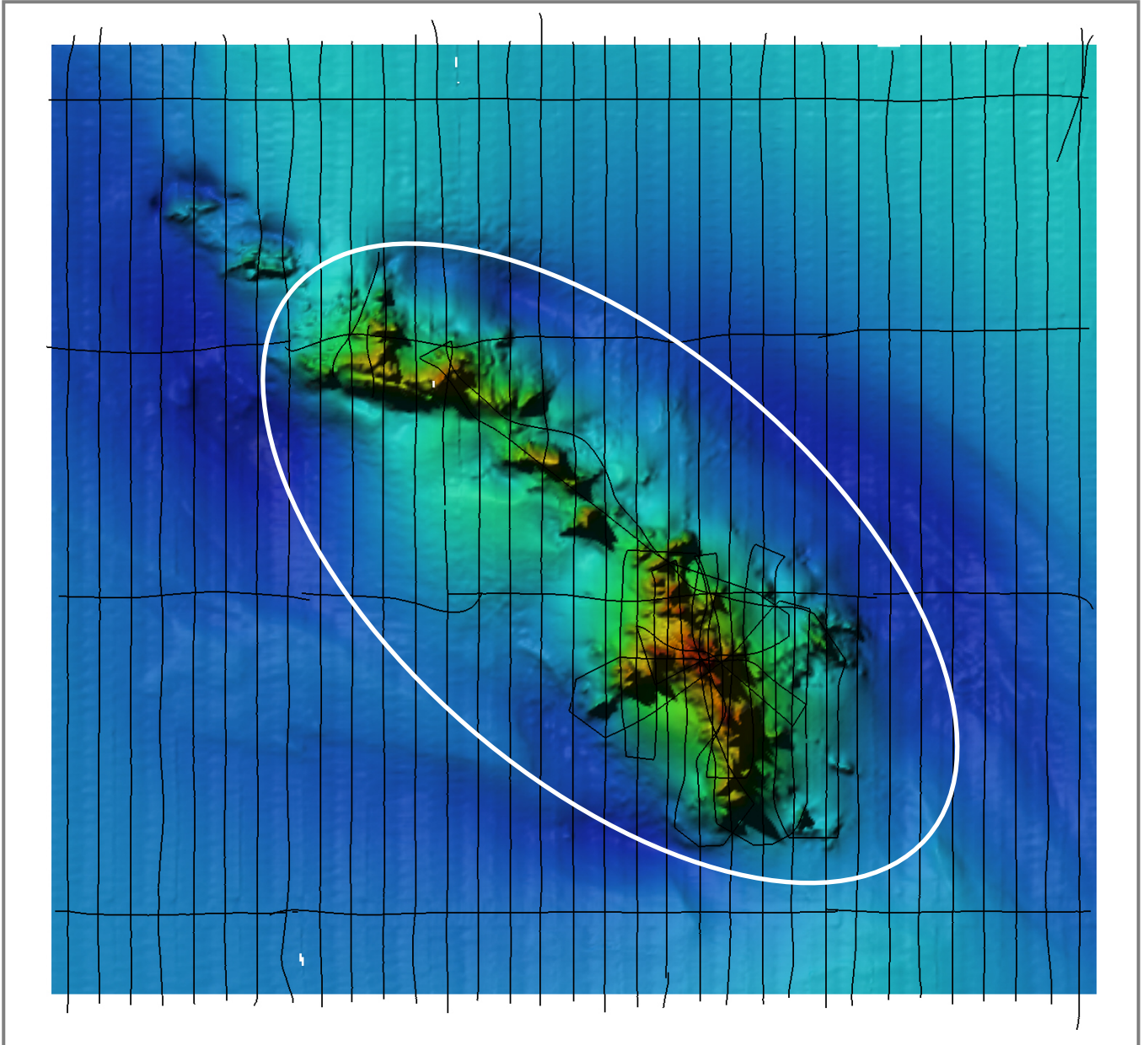
Intergovernmental Oceanographic Commission
UNESCO
Place de Fontenoy
75700 PARIS
FRANCE
Fax: +33 1 45 68 58 12
E-mail: info@unesco.org

Gageo Reef



Bathymetric contour map of Gageo Reef(Contour interval : 5 m)

Gageo Reef



The track lines in survey area

Gageo Reef

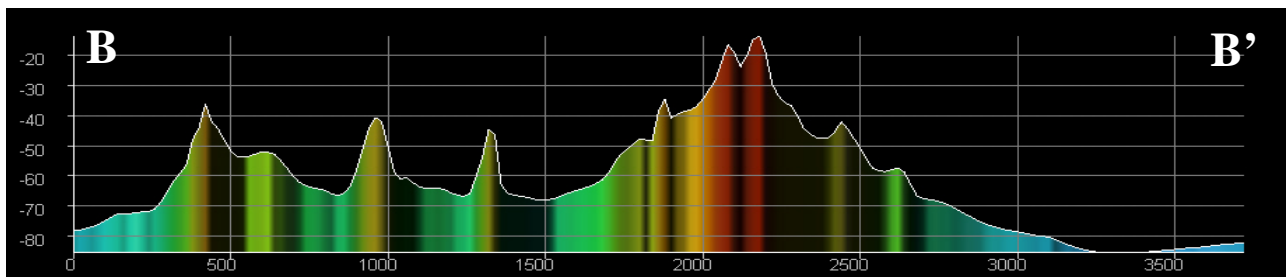
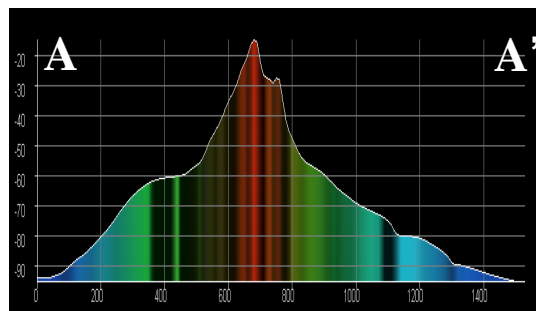
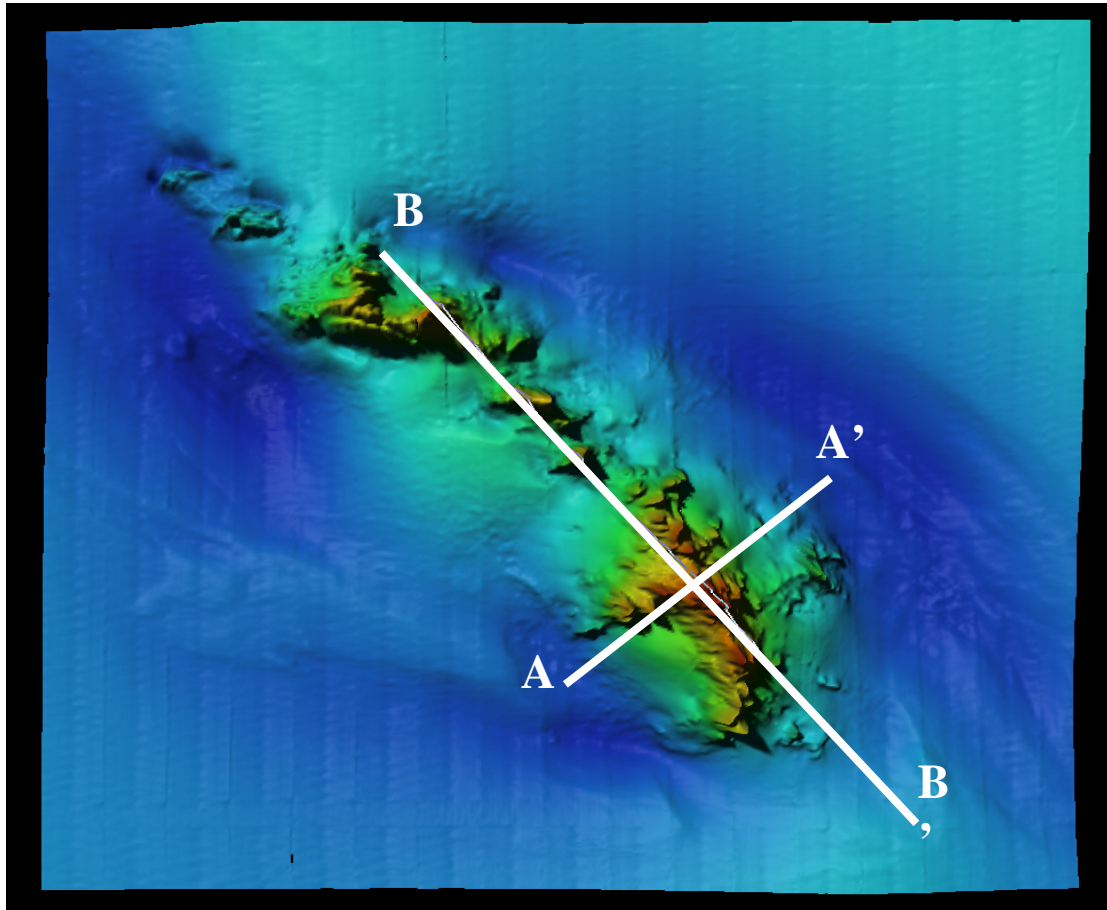


Image map and profile across Gageo Reef