

UNDERSEA FEATURE NAME PROPOSAL

Ocean or Sea: [Yellow Sea](#)

Name Proposed: [Sae Hills](#)

Coordinates: A – of midpoint or summit: ① Lat. [37° 38'33"N](#) Long. [124° 28'39"E](#)

② Lat. [37° 39'28"N](#) Long. [124° 28'17"E](#) ③ Lat. [37° 39'50"N](#) Long. [124° 29'11"E](#)

[25](#) kilometres in [W](#) direction from [Socheong Do \('Do' means island\)](#)

B – extremities (if linear feature):

Lat		Lat.
Long	to	Long.

Description (kind of feature): [Hills](#)

Identifying or categorizing characteristics (shape, dimensions, total relief, least depth, steepness, etc.):

[Sae Hills](#) consist of a cluster of three isolated peaks in the [Yellow Sea](#), west of the [Korean peninsula](#). Water depths at the summits of [Sae Hills](#) are 61m, 61m and 59m respectively, with overall reliefs of 15m, 15m and 17m. The hills, no matter how small, are important fishing places in the yellow sea and fishermen refer to them often.

Associated features:

Chart reference:

Shown with name on chart No. _____

Shown but not named on chart No. [323 \(scale 1:0.25 mln\) Published by Korea](#) _____

Not shown but within area covered by chart No. _____

Reason for choice of name (if a person, state how associated with the feature to be named):

[The name, "Sae Hills," refers to the fact that these hills have been newly found by local fisherman. Sae is the Korean word for "new."](#)

Discovery facts:

Date: [Sep. 2006](#) **by** (ship): [Hwanghaero](#)

By means of (equipment): [Multi-Beam Echosounder \(EM-3002, Kongsberg\)](#)

Navigation used: [DGPS \(Seatex Seapath, Kongsberg\)](#)

Estimated positional accuracy in nautical miles: [± 0.001 miles](#)

Description of survey (track spacing, line crossings, grid network, etc.):

[The line spacing of survey tracks was less than 125m in order to ensure 100 % coverage of the multi-beam system.](#)

Nature and repository of other survey activities (dredge samples, cores, magnetics, gravity, photographs, etc.):

[Dredge samples.](#)

Supporting material (enclose, if possible, a sketch map of the survey area, profiles of the features, etc., with reference to prior publication, if any):

[See attached bathymetric maps, 3-D image maps, and survey track chart.](#)

Submitted by: [The Korea Committee on Marine Geographical Names, Republic of Korea](#)

Date: [April 25, 2008](#)

Address: [1-17, 7-ga Hang-dong, Jung-gu, Incheon, 400-800, Republic of Korea](#)

[Tel : +82 32 885 3825](#)

[Fax : +82 32 885 3088](#)

Concurred in by (if applicable):

National Authority (if any): [National Oceanographic Research Institute](#)

Address: [1-17, 7-ga Hang-dong, Jung-gu, Incheon, 400-800, Republic of KOREA](#)

[Tel : +82 32 885 3825](#)

[Fax : +82 32 885 3088](#)

Note: this form should be forwarded, when completed:

a) **If the undersea feature is located in territorial waters :-**

to your "National Authority of Undersea Feature Names" or, if this does not exist or is not known, either to the International Hydrographic Bureau or to the Intergovernmental Oceanographic Commission (see addresses below) ;

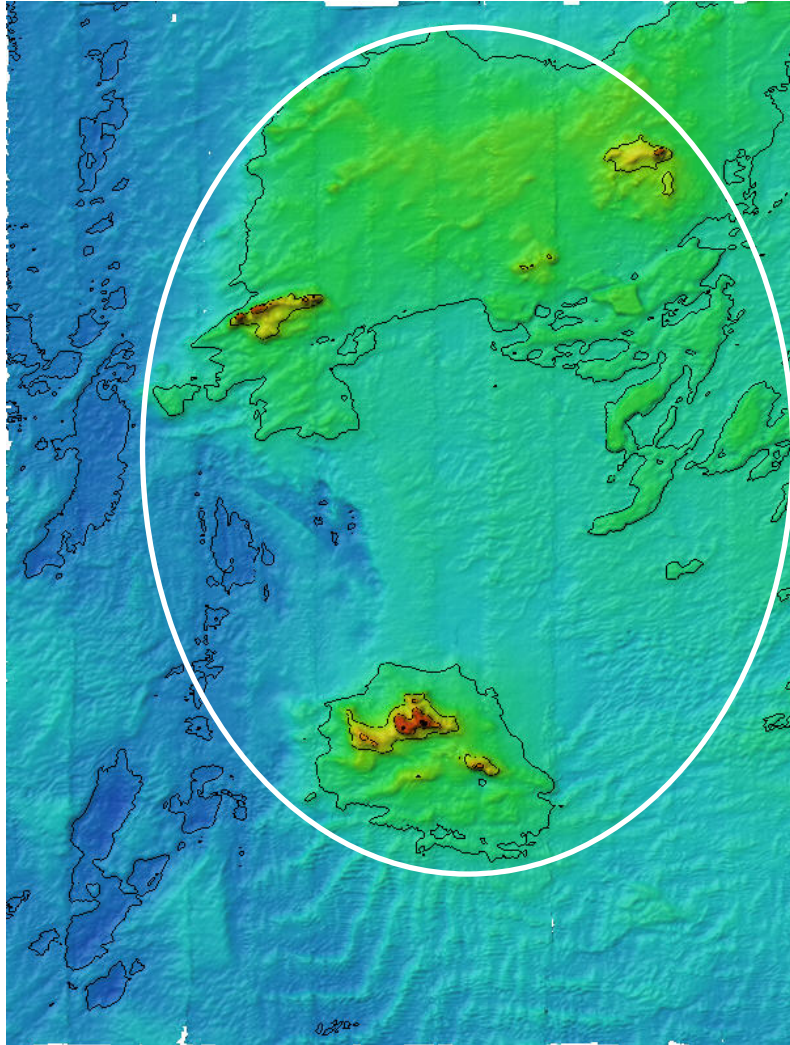
b) If the undersea feature is located in international waters :-

to the International Hydrographic Bureau or to the Intergovernmental Oceanographic Commission, at the following addresses :

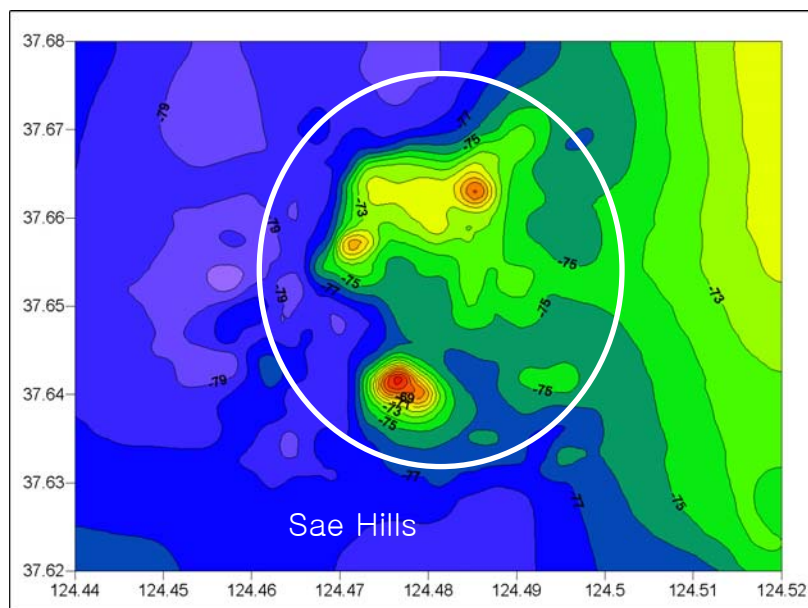
International Hydrographic Bureau
4, quai Antoine 1er
B.P. 445
MC 98011 MONACO CEDEX
Principality of MONACO
Fax: +377 93 10 81 40
E-mail: info@ihb.mc

Intergovernmental Oceanographic Commission
UNESCO
Place de Fontenoy
75700 PARIS
FRANCE
Fax: +33 1 45 68 58 12
E-mail: info@unesco.org

Sae Hills

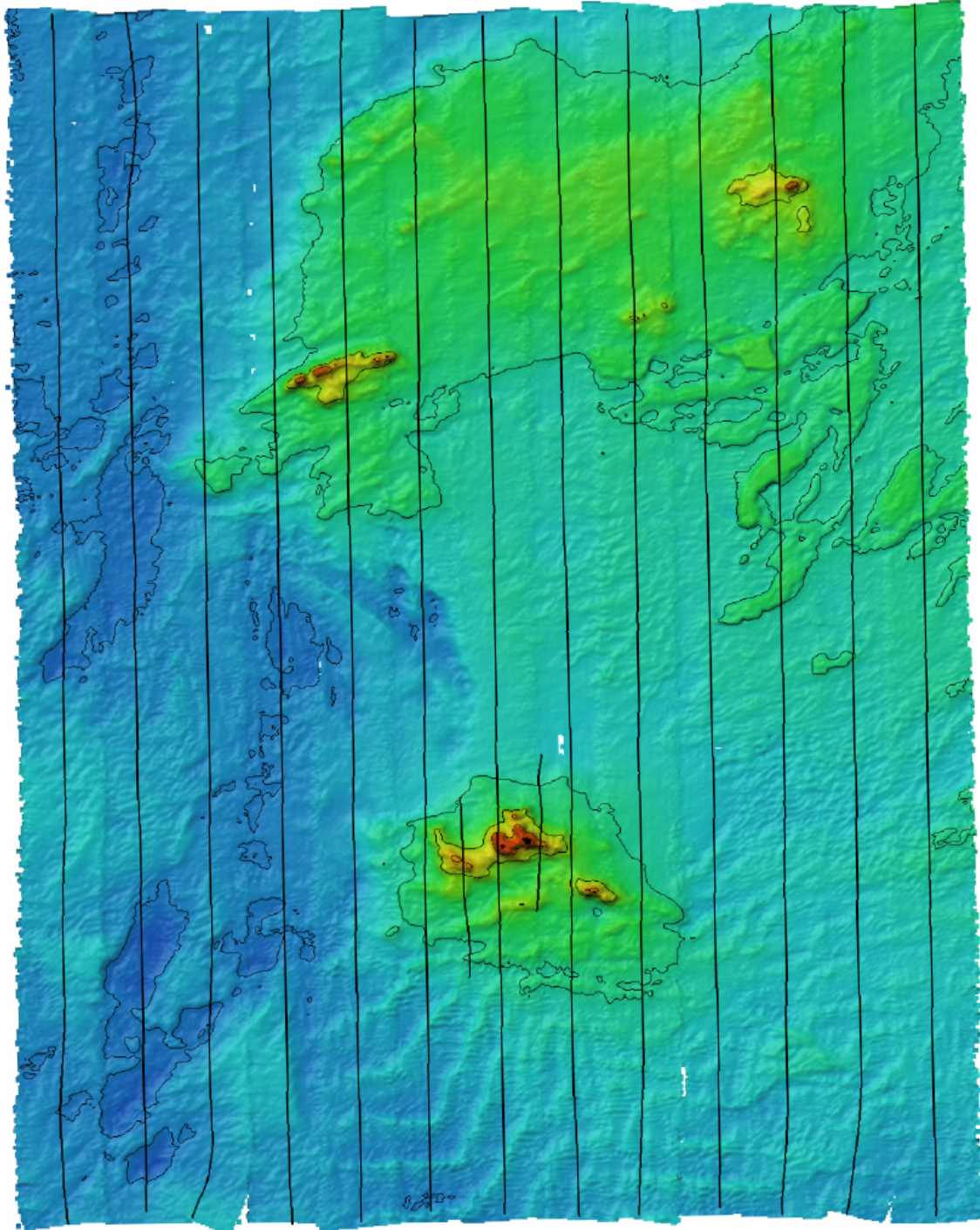


Bathymetric contour map of Sae Hills (Contour interval : 5m)



Bathymetric contour map (Contour interval : 1 m)

Sae Hills



The track lines in survey area

Sae Hills

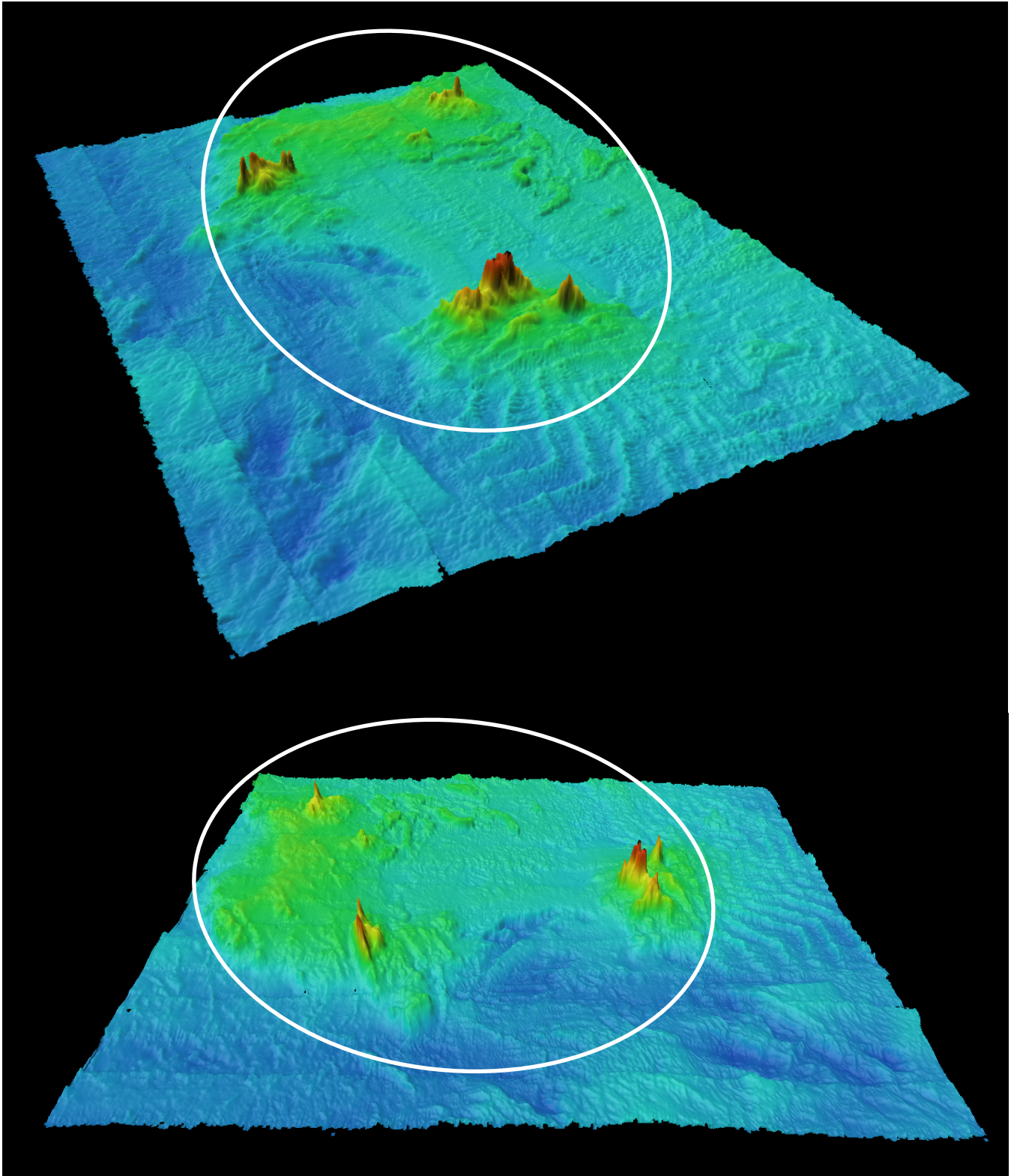


Image map of Sae Hills

Sae Hills

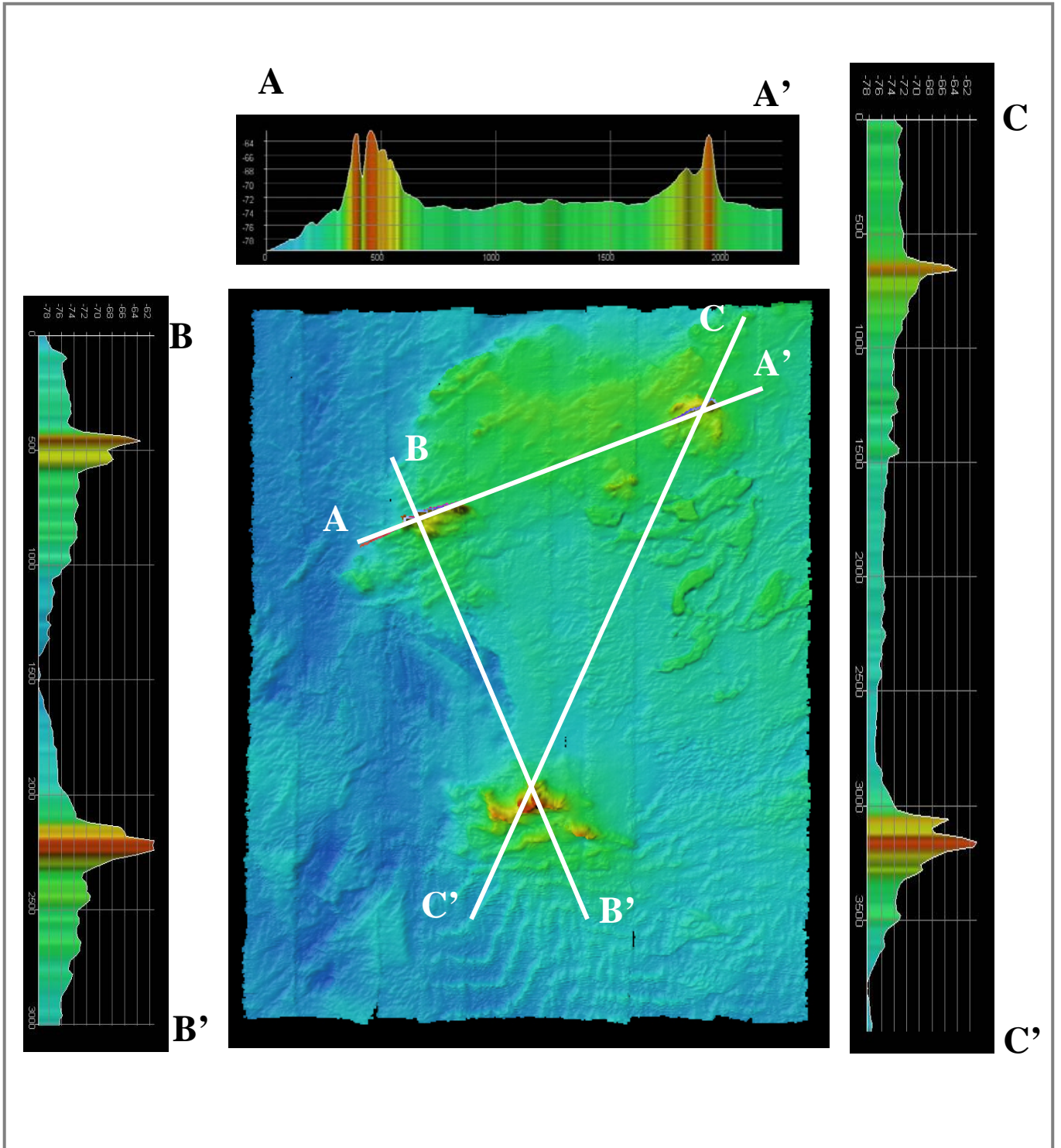


Image map and profile across Sae Hills