

GEBCO SUB-COMMITTEE ON UNDERSEA FEATURE NAMES (SCUFN)
21st Meeting, Jeju Island, Rep of Korea, 19-22 May 2008

Comparison between the GEBCO Gazetteer and the SCAR Composite Gazetteer on
Antarctica (CGA) – Proposals for changes to the GEBCO Gazetteer (Part 1)

CGA Features of different sources (including GEBCO)
which have differences in specific name, generic term or
coordinate

= CGA feature key

#70; *Proposal (23)*

Adare Seamounts	USA	70°00'S	171°30'E
Adare Seamounts	GBC	70°10'S	171°50'E

#71; *Proposal (23)*

Adare Trough	NZL	70°07'S	172°30'E
Adare Trough	USA	70°02'S	172°30'E
Adare Trough	GBC	70°07'S	172°30'E

#144; *Proposal (09)*

Akademik Federov Canyon	USA	72°45'S	32°00'W
Akademik Fedorov Canyon	GBC	72°45'S	31°30'W

#294; *Proposal (18)*

Amery Depression	AUS	68°00'S	74°00'E
Amery Basin	USA	68°15'S	74°30'E
Amery Basin	GBC	68°15'S	74°30'E

#314; *Proposal (04)*

Amundsen Plain	USA	65°00'S	125°00'W
Amundsen Abyssal Plain	GBC	65°00'S	125°00'W

#343; *Proposal (10)*

Andenes Knoll	USA	72°26'S	22°50'W
Andenes Knoll	GBC	72°24'S	23°00'W

#16641; *Proposal (31)*

Antipodes Fracture Zone	USA	60°00'S	151°00'W
Antipodes Fracture Zone	GBC	60°00'S	150°30'W

#581; *Proposal (16)*

Astrid Ridge	USA	68°00'S	12°00'E
Astrid Ridge	GBC	68°00'S	11°30'E

#647; *Proposal (11)*

Auståsen	NOR	70°59'S	9°58'W
Austaasen Bank	GBC	70°48'S	10°30'W
#844; <i>Proposal (21)</i>			
Balleny Seamounts	USA	61°00'S	161°30'E
Balleny Seamounts	GBC	65°40'S	161°45'E
#952; <i>Proposal (29)</i>			
Barsukov Seamount	USA	61°03'S	29°12'W
Barsukov Seamount	GBC	61°03'30"S	29°12'30"W
#163; <i>Proposal (04)</i>			
Bellingshausen Plain	USA	64°00'S	90°00'W
Bellingshausen Abyssal Plain	GBC	64°00'S	95°00'W
#1225; <i>Proposal (07)</i>			
Berkner Bank	USA	75°00'S	48°00'W
Berkner Bank	GBC	75°39'S	44°30'W
#1599; <i>Proposal (23)</i>			
Borchgrevink Canyon	USA	70°15'S	170°15'E
Borchgrevink Trench	GBC	70°15'S	170°15'E
#1682; <i>Proposal (23)</i>			
Bowers Canyon	USA	71°55'S	172°30'E
Bowers Canyon	GBC	71°12'S	173°30'E
#1768; <i>Proposal (05)</i>			
Brategg Banco	CHL	65°15'S	68°31'W
Brategg Bank	GBR	65°15'S	68°36'W
Brategg Bank	RUS	65°16'S	68°35'W
Brategg Bank	USA	65°16'S	68°35'W
Brategg Bank	GBC	64°50'S	68°10'W
#1938; <i>Proposal (28)</i>			
Bruce Ridge	USA	60°00'S	35°00'W
Bruce Ridge	GBC	60°37'S	36°07'W
#2152; <i>Proposal (03)</i>			
Byrd Canyon	USA	75°30'S	157°15'W
Byrd Canyon	GBC	75°25'S	157°15'W
#2533; <i>Proposal (04)</i>			
Charcot Fan	USA	66°00'S	86°00'W
Charcot Fan	GBC	65°50'S	86°15'W
#3090; <i>Proposal (24)</i>			
Crary Bank	USA	75°00'S	169°00'E
Crary Bank	GBC	74°55'S	170°00'E
#3091; <i>Proposal (09)</i>			

Crary Fan	USA	74°00'S	33°00'W
Crary Fan	GBC	74°30'S	36°00'W
#3911; <i>Proposal (18)</i>			
Dubinina zhëlob	RUS	67°00'S	81°00'E
Dubinina Trough	USA	67°10'S	80°30'E
Dubinina Trough	GBC	67°50'S	78°58'E
#4225; <i>Proposal (25)</i>			
Emerald Fracture Zone	USA	62°00'S	170°00'E
Emerald Fracture Zone	GBC	63°18'S	175°00'E
#4252; <i>Proposal (16)</i>			
Enderby Plain	USA	60°00'S	40°00'E
Enderby Abyssal Plain	GBC	60°00'S	40°00'E
#4260; <i>Proposal (27)</i>			
Endurance Ridge	USA	62°30'S	40°00'W
Endurance Ridge	GBC	63°15'S	41°40'W
#4411; <i>Proposal (11)</i>			
Explora Escarpment	GBC	70°03'S	15°00'W
Explora Escarpment	USA	70°33'S	15°00'W
#4869; <i>Proposal (18)</i>			
Four Ladies Bank	AUS	67°30'S	77°30'E
Four Ladies Bank	GBC	67°05'S	78°00'E
Four Ladies Bank	RUS	67°35'S	77°40'E
Four Ladies Bank	USA	67°30'S	77°30'E
#4892; <i>Proposal (17)</i>			
Fram Bank	AUS	67°25'S	69°40'E
Fram Bank	GBC	67°20'S	69°30'E
Fram Bank	RUS	67°20'S	70°20'E
Fram Bank	USA	67°18'S	70°00'E
#4923; <i>Proposal (24)</i>			
Franklin Shoals	USA	76°00'S	169°00'E
Franklin Shoal	GBC	75°50'S	169°00'E
#5216; <i>Proposal (07)</i>			
Belgrano Bank	USA	73°00'S	48°30'W
General Belgrano Bank	GBC	73°00'S	48°30'W
#5792; <i>Proposal (16)</i>			
Gunnerusbanken	NOR	68°30'S	33°00'E
Gunnerusbanken	RUS	67°00'S	34°00'E
Gunnerus Bank	USA	68°00'S	33°00'E
Gunnerus Bank	GBC	68°15'S	33°00'E

#16689; <i>Proposal (31)</i>			
Heitzler Fracture Zone	USA	63°30'S	162°30'E
Heitzler Fracture Zone	GBC	63°30'S	162°30'W
#6322; <i>Proposal (26)</i>			
Hespérides Trough	USA	60°21'S	50°50'W
Hespérides Trough	GBC	60°21'18"S	50°50'24"W
#6950; <i>Proposal (01)</i>			
Iselin Bank	NZL	71°45'S	177°00'W
Iselin Bank	USA	72°30'S	179°00'W
Iselin Bank	GBC	72°45'S	177°30'W
#7773; <i>Proposal (29)</i>			
Kosminskaya Fracture Zone	USA	61°32'S	30°20'W
Kosminskaya Fracture Zone	GBC	61°33'S	30°10'W
#7959; <i>Proposal (11)</i>			
Kvitkuven	NOR	72°38'S	16°18'W
Kvitkuven Bank	GBC	72°30'S	16°30'W
#8236; <i>Proposal (20)</i>			
Lazareva zhëlob (podvodnyj)	RUS	66°00'S	130°00'E
Lazarev Trough	USA	65°35'S	130°00'E
Lazarev Trough	GBC	65°30'S	131°37'E
#8439; <i>Proposal (29)</i>			
Ligeti Ridge	USA	62°00'S	28°00'W
Ligeti Ridge	GBC	61°55'S	28°15'W
#7200; <i>Proposal (24)</i>			
JOIDES Basin	USA	74°30'S	174°00'E
Joides Basin	GBC	74°30'S	174°00'E
#8526; <i>Proposal (03)</i>			
Little America Basin	USA	77°30'S	162°00'W
Little America Basin	GBC	77°35'S	162°00'W
#8637; <i>Proposal (06)</i>			
Espíritu Santo pasaje	ARG	61°20'S	55°28'W
Loper Channel	GBR	61°20'S	55°28'W
Loper Strait	RUS	61°40'S	56°30'W
Loper Seachannel	GBC	61°40'S	56°30'W
#9165; <i>Proposal (15)</i>			
Maud Rise	USA	66°00'S	3°00'E
Maud Rise	GBC	65°00'S	2°40'E
#9258; <i>Proposal (09)</i>			
McDonald Bank	USA	75°30'S	26°35'W
McDonald Bank	GBC	75°30'S	26°36'W

#10347; <i>Proposal (24)</i>			
Nordenskjold Basin	USA	76°03'S	165°00'E
Nordenskjold Basin	GBC	76°00'S	165°00'E
#10493; <i>Proposal (22)</i>			
Oates Bank	USA	70°15'S	165°00'E
Oates Bank	GBC	70°15'S	165°15'E
#10494; <i>Proposal (22)</i>			
Oates Canyon	USA	68°00'S	164°30'E
Oates Canyon	GBC	69°10'S	164°30'E
#10806; <i>Proposal (31)</i>			
Pacific-Antarctic Ridge	USA	62°00'S	157°00'W
Pacific-Antarctic Ridge	GBC	58°00'S	145°30'E
#11080; <i>Proposal (01)</i>			
Pennell Bank	NZL	74°00'S	180°00'E
Pennell Bank	RUS	74°30'S	180°00'E
Pennell Bank	USA	74°30'S	179°59'E
Pennell Bank	GBC	74°30'S	180°00'E
#11156; <i>Proposal (19)</i>			
Petersen Bank	AUS	65°45'S	109°55'E
Petersen Bank	USA	65°45'S	109°55'E
Petersen Bank	GBC	65°45'S	110°20'E
#16741; <i>Proposal (31)</i>			
Pitman Fracture Zone	USA	64°30'S	170°00'W
Pitman Fracture Zone	GBC	64°30'S	165°00'W
#11425; <i>Proposal (09)</i>			
Polarstern Canyon	USA	71°30'S	21°00'W
Polarstern Canyon	GBC	74°30'S	27°00'W
#11426; <i>Proposal (10)</i>			
Polarstern Knoll	USA	71°25'S	24°47'W
Polarstern Plateau	GBC	71°12'S	24°30'W
#11540; <i>Proposal (26)</i>			
Powell Basin	USA	62°15'S	49°30'W
Powell Basin	GBC	62°00'S	50°00'W
#11578; <i>Proposal (03)</i>			
Prestrud Bank	USA	77°30'S	159°30'W
Prestrud Bank	GBC	77°25'S	159°30'W
#12049; <i>Proposal (21)</i>			
Rennick Basin	NZL	69°50'S	161°00'E
Rennick Trough	GBC	69°25'S	162°00'E

#12378; <i>Proposal (01)</i>			
Ross Bank	USA	76°45'S	176°00' W
Ross Bank	GBC	76°45'S	175°30' E
#12379; <i>Proposal (03)</i>			
Ross Canyon	USA	75°00'S	163°00'W
Ross Canyon	GBC	75°00'S	163°10'W
#12754, <i>Proposal (03)</i>			
Saunders Basin	USA	76°50'S	155°00'W
Saunders Bank	GBC	76°50'S	155°00'W
#16767; <i>Proposal (06)</i>			
Shackleton Fracture Zone	USA	60°00'S	60°00'W
Shackleton Fracture Zone	GBC	59°50'S	58°45'W
#13731; <i>Proposal (27)</i>			
South Orkney Trough	USA	60°00'S	45°00'W
South Orkney Trough	GBC	60°45'S	40°07'W
#13738; <i>Proposal (29)</i>			
South Sandwich Fracture Zone	USA	63°00'S	20°00'W
South Sandwich Fracture Zone	GBC	60°37'S	20°45'W
#13739; <i>Proposal (26)</i>			
South Scotia Ridge	USA	60°00'S	46°30'W
South Scotia Ridge	GBC	60°45'S	47°52'W
#13741; <i>Proposal (06)</i>			
South Shetland Trough	USA	61°00'S	59°30'W
South Shetland Trough	GBC	61°37'S	64°30'W
#14081; <i>Proposal (17)</i>			
Storegg Bank	AUS	66°40'S	64°35'E
Storegg	RUS	67°24'S	65°30'E
Storegg Bank	GBC	67°10'S	64°10'E
#14555; <i>Proposal (21)</i>			
Terra Nova Canyon	USA	69°00'S	159°00'E
Terra Nova Canyon	GBC	68°40'S	159°00'E
#15180; <i>Proposal (22)</i>			
Umitaka Bank	USA	67°25'S	167°00'E
Umitaka Seamount	GBC	67°25'S	167°00'E
#15530; <i>Proposal (29)</i>			
Vinogradov Fracture Zone	USA	60°56'S	29°12'W
Vinogradov Fracture Zone	GBC	60°52'15"S	29°15'06"W
#15829; <i>Proposal (30)</i>			
Weddell Plain	USA	65°00'S	20°00'W

Weddell Abyssal Plain	GBC	64°45'S	25°00'W
#15943; <i>Proposal (02)</i>			
Whale Bay Furrows	USA	78°00'S	169°00'W
Whales Bay Deeps	GBC	77°50'S	170°00'W
#17381; <i>Proposal (06)</i>			
Wordie Caldera	USA	61°48'S	55°27'W
Wordie Caldera	GBC	61°48'S	55°27'E

CGA Features of different sources (including GEBCO) which have no differences in name, generic term or coordinate

Behm Bank	USA	76°21'S	30°00'W
Behm Bank	GBC	76°21'S	30°00'W
Belgica Guyot	USA	65°30'S	90°30'W
Belgica Guyot	GBC	65°30'S	90°30'W
Brunt Basin	USA	75°00'S	25°00'W
Brunt Basin	GBC	75°00'S	25°00'W
Colbeck Basin	USA	77°00'S	159°30'W
Colbeck Basin	GBC	77°00'S	159°30'W
Da Vinci Bank	USA	77°30'S	34°30'W
Da Vinci Bank	GBC	77°30'S	34°30'W
Dallmann Seamount	USA	67°10'S	96°53'W
Dallmann Seamount	GBC	67°10'S	96°53'W
Dawson-Lambton Trough	USA	76°00'S	26°00'W
Dawson-Lambton Trough	GBC	76°00'S	26°00'W
De Gerlache Seamounts	USA	65°00'S	90°30'W
De Gerlache Seamounts	GBC	65°00'S	90°30'W
Defant Bank	USA	76°50'S	31°40'W
Defant Bank	GBC	76°50'S	31°40'W
#3899; <i>Proposal (24)</i>			
Drygalski Basin	USA	74°50'S	166°30'E
Drygalski Basin	GBC	74°50'S	166°30'E

#4412; *Proposal (10)*

Explora Knoll	USA	72°00'S	24°00'W
Explora Knoll	GBC	72°00'S	24°00'W
Filchner Trough	USA	77°00'S	36°00'W
Filchner Trough	GBC	77°00'S	36°00'W
Freedden Bank	USA	76°20'S	28°50'W
Freedden Bank	GBC	76°20'S	28°50'W
Glomar Challenger Basin	USA	77°45'S	180°00'E
Glomar Challenger Basin	GBC	77°45'S	180°00'E

#5793; *Proposal (16)*

Gunnerus Ridge	USA	66°30'S	33°45'E
Gunnerus Ridge	GBC	66°30'S	33°45'E
Hakurei Seamount	USA	62°52'S	140°49'E
Hakurei Seamount	GBC	62°52'S	140°49'E
Hallett Ridge	USA	71°15'S	176°50'E
Hallett Ridge	GBC	71°15'S	176°50'E
Helmert Bank	USA	75°00'S	29°20'W
Helmert Bank	GBC	75°00'S	29°20'W

#3601; *Proposal (06)*

Hero Fracture Zone	USA	61°30'S	66°00'W
Hero Fracture Zone	GBC	61°30'S	66°00'W
Hofmann Trough	USA	77°00'S	32°30'W
Hofmann Trough	GBC	77°00'S	32°30'W
Lecointe Guyot	USA	65°06'S	93°00'W
Lecointe Guyot	GBC	65°06'S	93°00'W
Lichte Trough	USA	76°25'S	30°00'W
Lichte Trough	GBC	76°25'S	30°00'W
Lichtner Seamount	USA	67°33'S	0°40'W
Lichtner Seamount	GBC	67°33'S	0°40'W
Marie Byrd Seamount	USA	70°00'S	118°00'W
Marie Byrd Seamount	GBC	70°00'S	118°00'W
Mawson Bank	USA	73°30'S	174°00'E
Mawson Bank	GBC	73°30'S	174°00'E
Möller Trough	USA	76°35'S	30°40'W
Möller Trough	GBC	76°35'S	30°40'W

Orca Seamount	USA	62°26'S	58°24'W
Orca Seamount	GBC	62°26'S	58°24'W
Porpoise Canyon	USA	64°20'S	131°00'E
Porpoise Canyon	GBC	64°20'S	131°00'E
Rinner Trough	USA	77°40'S	35°00'W
Rinner Trough	GBC	77°40'S	35°00'W
Rosenthal Seamount	USA	68°38'S	97°05'W
Rosenthal Seamount	GBC	68°38'S	97°05'W
Scott Seamounts	USA	68°00'S	179°50'W
Scott Seamounts	GBC	68°00'S	179°50'W
Shirase Bank	USA	76°40'S	158°00'W
Shirase Bank	GBC	76°40'S	158°00'W
Sulzberger Basin	USA	77°00'S	152°30'W
Sulzberger Basin	GBC	77°00'S	152°30'W
Wegener Canyon	USA	70°45'S	14°00'W
Wegener Canyon	GBC	70°45'S	14°00'W
Wilson Canyon	USA	70°35'S	176°15'E
Wilson Canyon	GBC	70°35'S	176°15'E

SCUFN features which are listed in B-8 (and mostly in CGA, too) with proposals for changes

#320	Proposal (04):	Amundsen Ridges
#344	Proposal (13):	Anderle Knoll
#418	Proposal (08):	Antarctic Canyon
# -	Proposal (19):	Australian-Antarctic Basin
#708	Proposal (22):	Axthelm Seamount
#747	Proposal (14):	Baeyer Canyon
#1096	Proposal (13):	Behaim Seamount
#1952	Proposal (13):	Bruns Knoll
# -	Proposal (35):	Chile Ridge
# -	Proposal (35):	Chile Trench
#3583	Proposal (09):	Deutschland Canyon
#3900	Proposal (12):	Drygalski Canyon
# -	Proposal (29):	East Scotia Ridge
#4203	Proposal (21):	Ellsworth Bank
#4256	Proposal (08):	Endurance Canyon
# -	Proposal (31):	Erebus Fracture Zone
#4596	Proposal (14):	Fimbul Canyon

#5361	Proposal (22):	Glacier Rise
#6200	Proposal (13):	Heiskanen Knoll
#6388	Proposal (01):	Hillary Canyon
#6570	Proposal (22):	Hooker Basin
#6866	Proposal (14):	Imhof Knoll
#7305	Proposal (16):	Kainan Maru Seamounts
# -	Proposal (36):	Kerguelen Plateau
#7754	Proposal (11):	Koppe Canyon
# -	Proposal (31):	La Rose Fracture Zone
#17378	Proposal (28):	Lazarev Seamount
# -	Proposal (31):	Le Géographe Fracture Zone
# -	Proposal (31):	Le Petit Prince Fracture Zone
# -	Proposal (31):	Le Renard Fracture Zone
#8745	Proposal (22):	Lyall Basin
#10185	Proposal (12):	Neumayer Canyon
# -	Proposal (29):	North Weddell Ridge
# -	Proposal (27):	Orkney Deep
# -	Proposal (31):	Saint-Exupéry Fracture Zone
#12671	Proposal (08):	San Martin Canyon
#12679	Proposal (14):	Sanae Canyon
# -	Proposal (06):	Sars Seamount
# -	Proposal (34):	Southeast Indian Ridge
# -	Proposal (33):	Southwest Indian Ridge
# -	Proposal (29):	South Sandwich Trench
#14822	Proposal (13):	Torge Plateau
# -	Proposal (22):	Unnamed (*) Seamount
#15223	Proposal (08):	Uruguay Canyon
#15845	Proposal (11):	Wegener Canyon
#16034	Proposal (17):	Wild Canyon
#18301	Proposal (06):	Wordie Seamount
#16263	Proposal (08):	Yelcho Canyon

Ralf Krocke
Van-Ronzelen-Straße 2
27568 Bremerhaven - Germany



Bremerhaven, March 2008

Proposal (01) for changes in SCUFN


Features handled in this proposal:


708, Hillary Canyon

764, Iselin Bank

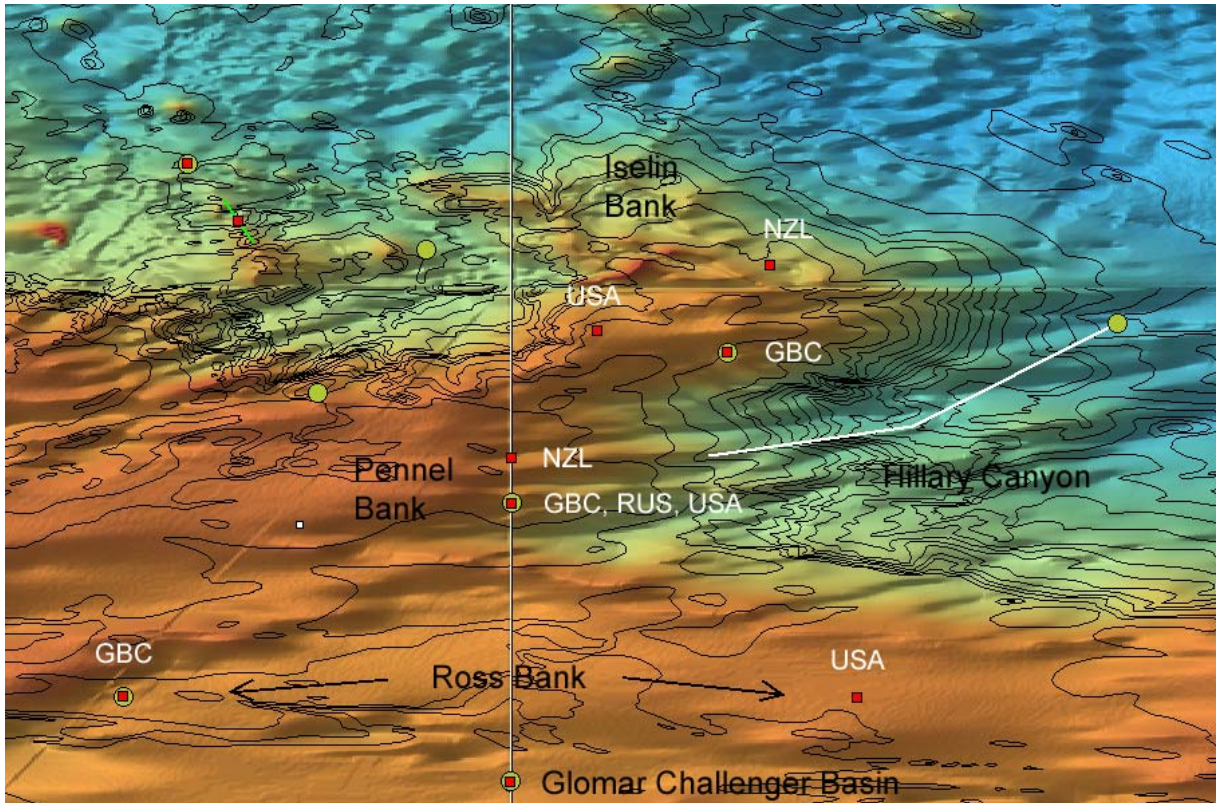
1883, Pennell Bank

1410, Ross Bank

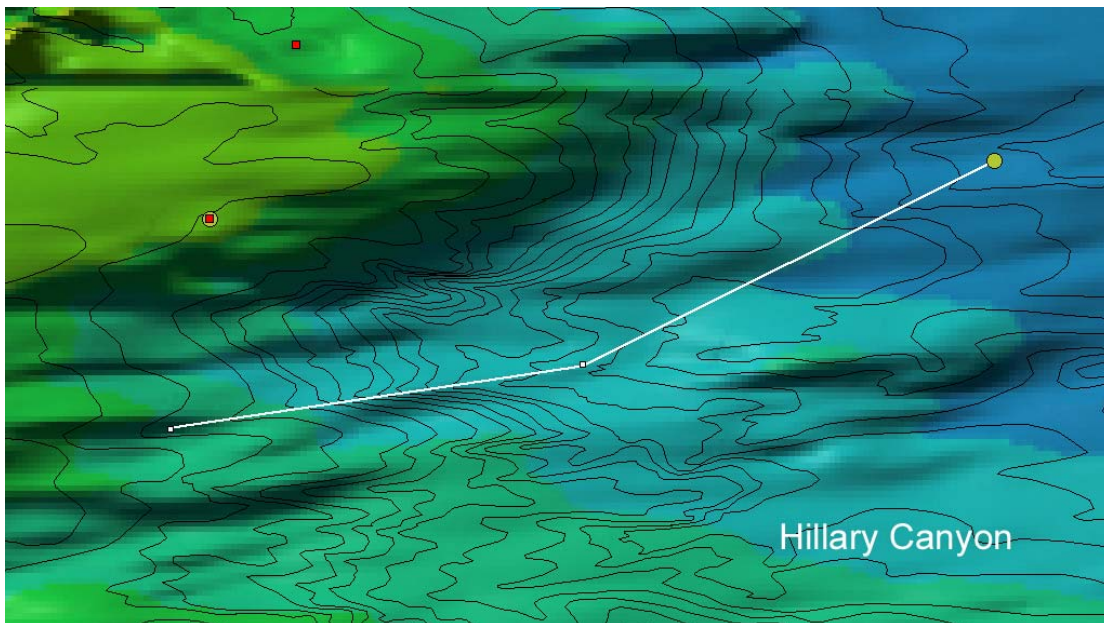
-  ■ New feature coordinates
(Points, lines, polygons)
-

-  ■ Feature in SCUFN
(Points, lines, polygons)

- Feature in CGA (only points)



Grid: ETOPO2; Isolines: GEBCO



Feature Name: Hillary
 Generic Term: Canyon
 B-8 Feature Key: 708
 Reason: Geometric description as line recommended.
 Comment: Change also CGA feature # 6388– GBC (--)

Proposal to SCUFN:

New positions in SCUFN and CGA – GBC: As line feature:

73°57' S, 177°43' W |

73°36' S, 175°22' W |
72°25' S, 173°00' W ← actual position in SCUFN

Feature Name: Iselin
Generic Term: Bank
B-8 Feature Key: 764
Reason: Adjust positions of CGA feature #6950 –
GBC: Accredited by: SCUFN (Jun. 1997)
NZL: --
USA: Name approved 4/80 (ACUF 201)
Comment: Position from NZL fits best the real situation on map.

Actual positions: NZL 71°45'S 177°00'W
USA 72°30'S 179°00'W
GBC 72°45'S 177°30'W

Proposal to SCUFN:
New position in SCUFN and CGA – GBC, USA: Adopt from NZL:
71°45'S, 177°00'W

Feature Name: Pennell
Generic Term: Bank
B-8 Feature Key: 1883
Reason: Adjust position of CGA feature # 11080 –
GBC: (“Shown on UK Chart 4065”).
NZL: („A large submarine bank about 500 miles long and 140 miles wide extending across Ross Sea from Cape Adare to King Edward VII Land”)
RUS: --
USA: Name approved 2/64 (ACUF 201)

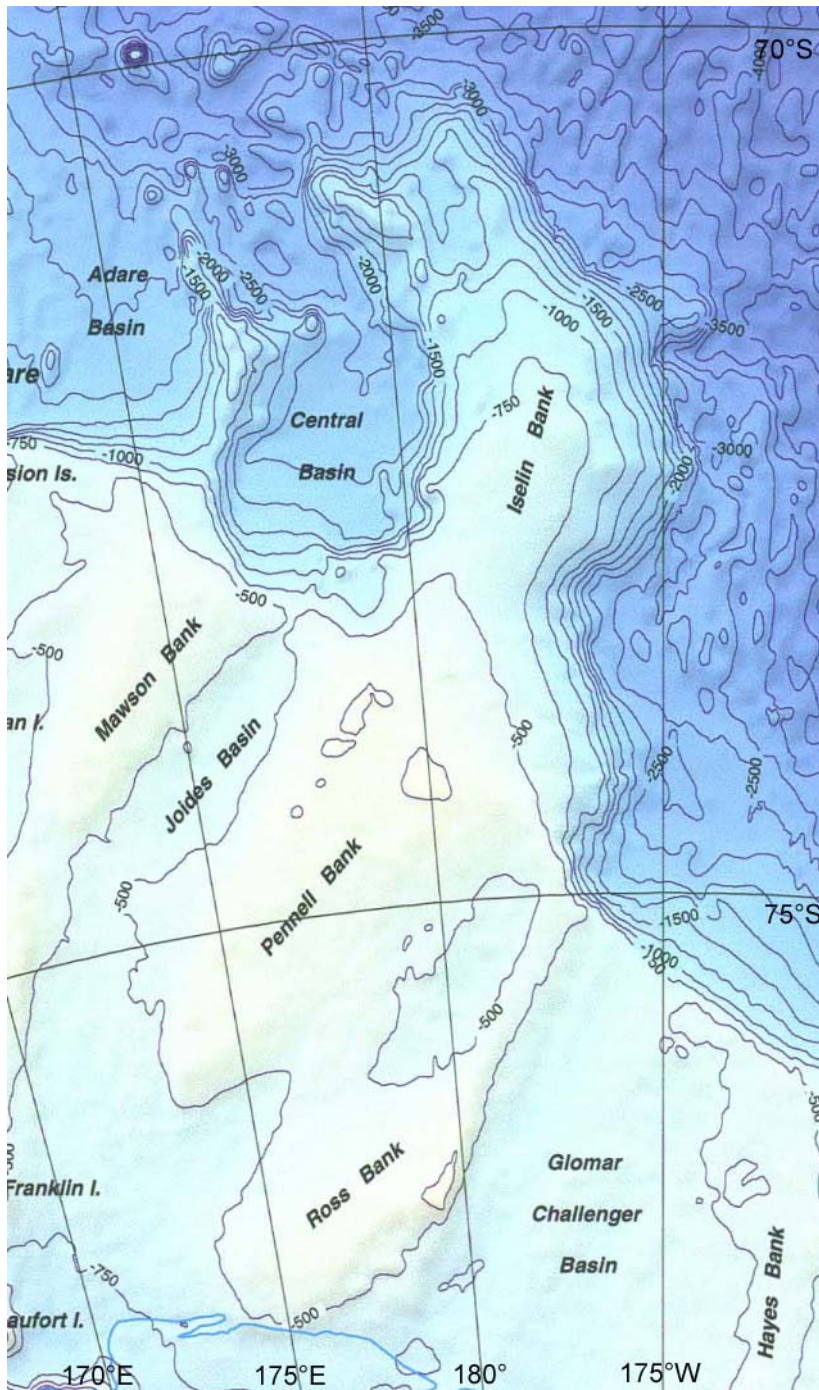
Actual positions: NZL 74°00'S 180°00'E
USA 74°30'S 179°59'E
RUS 74°30'S 180°00'E
GBC 74°30'S 180°00'E

Proposal to SCUFN and CGA:
New position in SCUFN and CGA – GBC, NZL, RUS, USA: As point feature:
74°45'S, 177°30'E

Feature Name: Ross
Generic Term: Bank

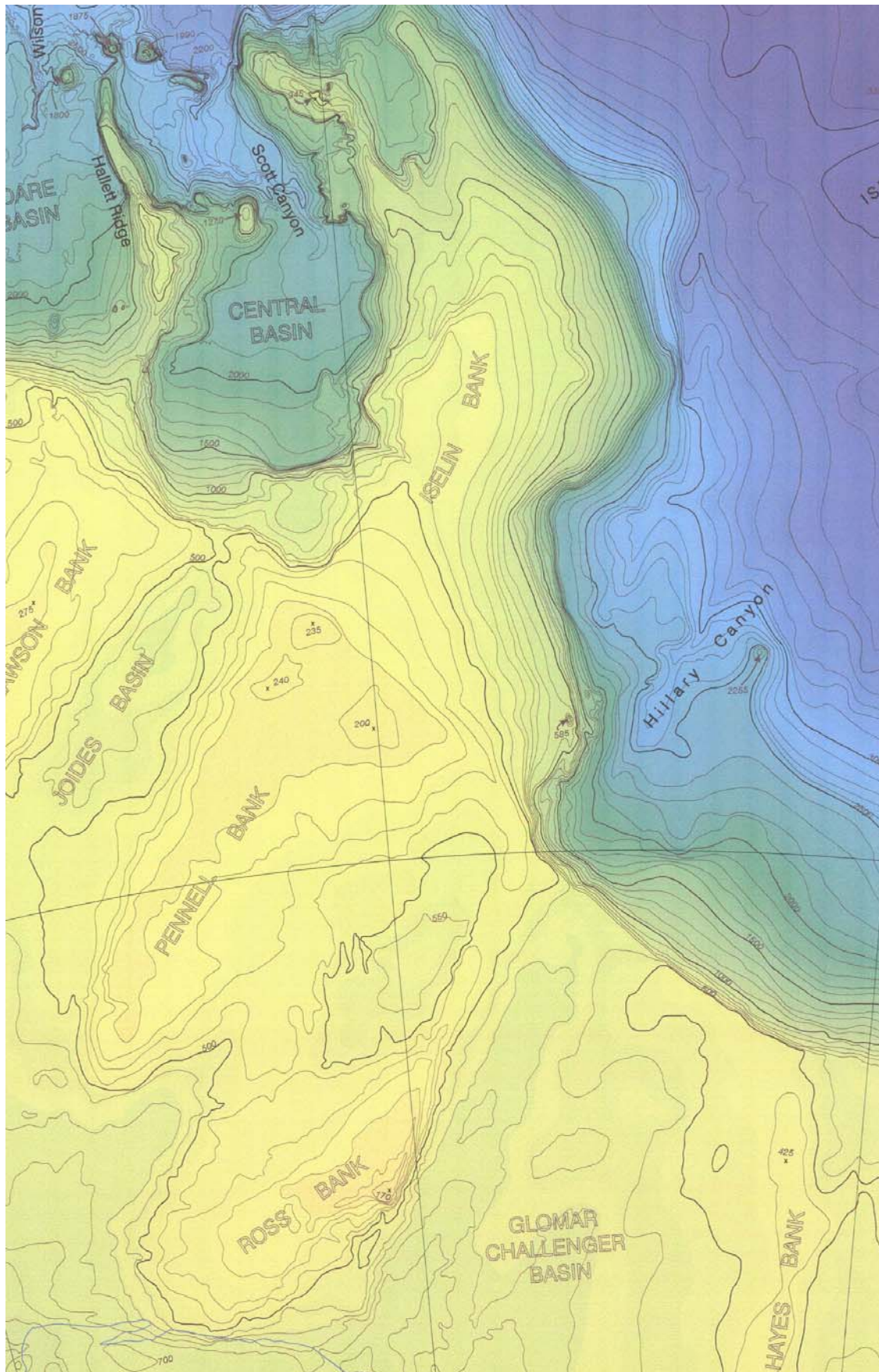
B-8 Feature Key: 1410
Reason: Adjust positions of CGA feature #12378 –
GBC: --
USA: Name approved 6/88 (ACUF 228)
Actual position: USA 76°45'S 176°00' W
GBC 76°45'S 175°30' E

Proposal to CGA:
New position in CGA - USA: Adopt from GBC:
76°45'S, 175°30'E



Bathymetry of the Ross Dependency and Adjacent Southern Ocean,


compiled by Vaughan Stagpool, Institute of Geological & Nuclear Sciences, NZL




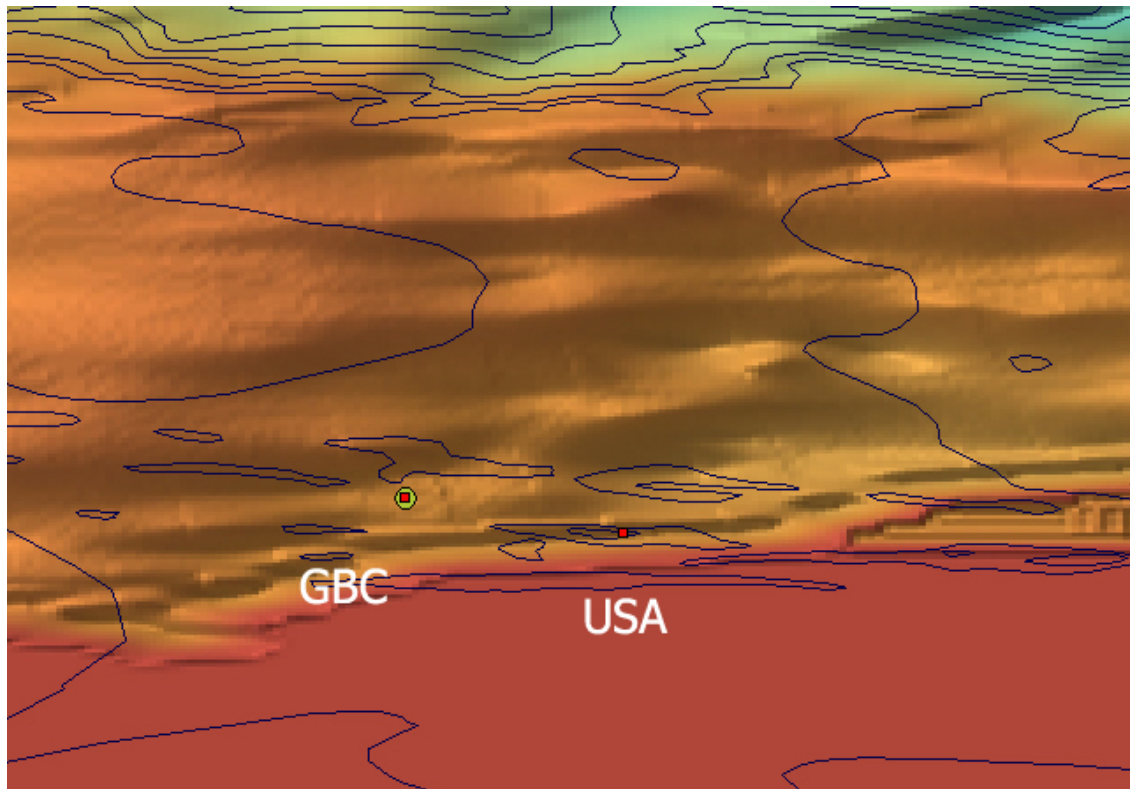
Ross Sea Bathymetry,
compiled by F. J. Davey, Institute of Geological & Nuclear Sciences, NZL

Proposal (02) for changes in SCUFN

Features handled in this proposal:
1800, Whale Bay Deeps

-  New feature coordinates
(Points, lines, polygons)

-  Feature in SCUFN
(Points, lines, polygons)
- Feature in CGA (only points)



Grid: ETOPO2; Isolines: GEBCO

Feature Name: Whales Bay
Generic Term: Deeps
B-8 Feature Key: 1800
Reason: Adjust name, generic term and position
of CGA feature #15943 –
GBC: (--)

Generic term 'deeps' is not valid following B-6
and should be changed to 'basin'.

USA: Name approved 4/80 (ACUF 201)

Actual feature name 'Whale Bay'
should be changed to 'Whales Bay'.

Generic term 'furrows' is not valid following B-6
and should be changed to 'basin'.

Comment: Position given by USA could be retained at the deepest and
centered location of the feature.

Actual positions: USA 78°00'S 169°00'W
GBC 77°50'S 170°00'W

Proposal to SCUFN:

New position in SCUFN and CGA – GBC: Adopt from USA:
78°00'S, 169°00'W

Proposal to SCUFN:

New name and generic term in SCUFN and CGA – GBC, USA:
Whales Bay Basin

Ralf Krocke
Van-Ronzelen-Straße 2
27568 Bremerhaven - Germany



Bremerhaven, March 2008

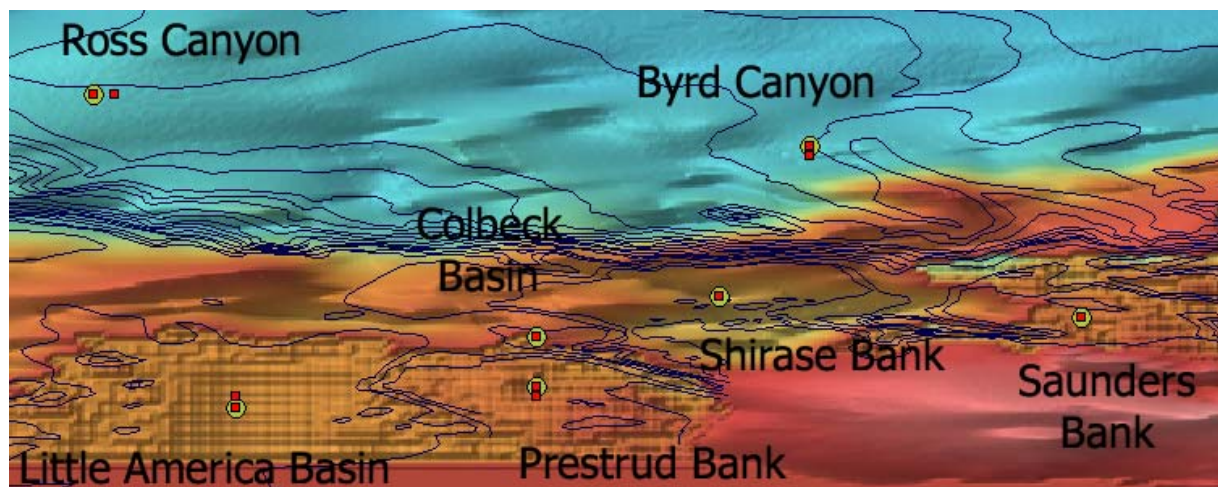
Proposal (03) for changes in SCUFN

Features handled in this proposal:

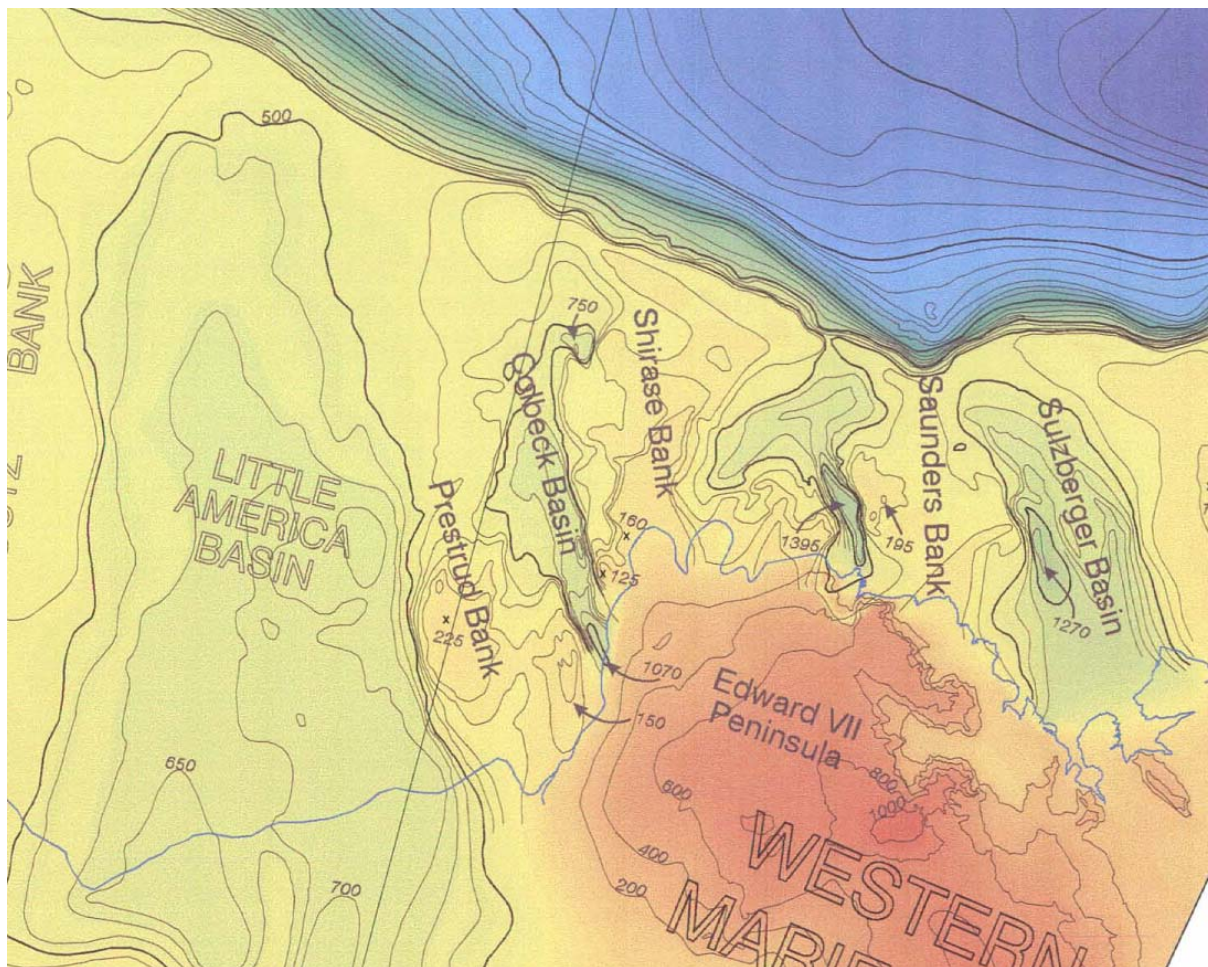
233, Byrd Canyon
904, Little America Basin
1325, Prestrud Bank
1411, Ross Canyon
1467, Saunders Bank

- ■ New feature coordinates
(Points, lines, polygons)

- ■ Feature in SCUFN
(Points, lines, polygons)
- ■ Feature in CGA (only points)



Grid: ETOPO2; Isolines: GEBCO



Ross Sea Bathymetry,
compiled by F. J. Davey, Institute of Geological & Nuclear Sciences, NZL

Feature Name: Byrd
 Generic Term: Canyon
 B-8 Feature Key: 233
 Reason: Adjust position of CGA feature #2152 –
 GBC: --
 USA: Name approved 6/88 (ACUF 228)

More detailed geometric description as line recommended.
 Actual positions: USA 75°30'S 157°15'W
 GBC 75°25'S 157°15'W

Proposal to SCUFN:

New position in SCUFN and CGA – GBC, USA:

(Available datasets unsuitable to detect significant structures and define coordinates)

Feature Name: Little America
Generic Term: Basin
B-8 Feature Key: 904
Reason: Adjust position of CGA feature #8526 –
GBC: --
USA: Name approved 6/88 (ACUF 228)
Comment: GBC position seems to be more centered.
Change position of CGA feature #8526 – USA.
Actual positions: USA 77°30'S 162°00'W
GBC 77°35'S 162°00'W

Proposal to CGA:

New position in CGA – USA: Adopt from GBC:
77°35'S, 162°00'W

Change of position in SCUFN is not necessary.

Feature Name: Prestrud
Generic Term: Bank
B-8 Feature Key: 1325
Reason: Adjust position of CGA feature #11578 –
CGA: --
USA: Name approved 6/88 (ACUF 228)
Comment: USA position seems to be more centered.
Change also position of CGA feature #11578 – GBC.
Actual positions: USA 77°30'S 159°30'W
GBC 77°25'S 159°30'W

Proposal to SCUFN:

New position in SCUFN and CGA – GBC: Adopt from USA:
77°30'S, 159°30'W

Feature Name: Ross
Generic Term: Canyon
B-8 Feature Key: 1411
Reason: Adjust position of CGA feature #12379 –
GBC: --
USA: Name approved 6/88 (ACUF 228)

Geometric description as line recommended.
Actual positions: USA 75°00'S 163°00'W
GBC 75°00'S 163°10'W

Proposal to SCUFN:

New position in SCUFN and CGA – GBC, USA:

(Available datasets unsuitable to detect significant structures)

Feature Name: Saunders
Generic Term: Bank
B-8 Feature Key: 1467
Reason: Adjust generic term of CGA feature #12754 –
CGA: Accredited by: SCGN (May 1993). “Replaces
SaundersBasin”.
USA: Name approved 6/88 (ACUF 228)
**Generic term ‘basin’ is inadequate
and should be changed to ‘bank’**
Comment: Saunders *Basin* is listed in SCUFN as feature 2411 without
coordinates or any other properties, but with hint to Saunders
Bank.

Change of position of SCUFN feature 1467 is not necessary.

Proposal to SCUFN:

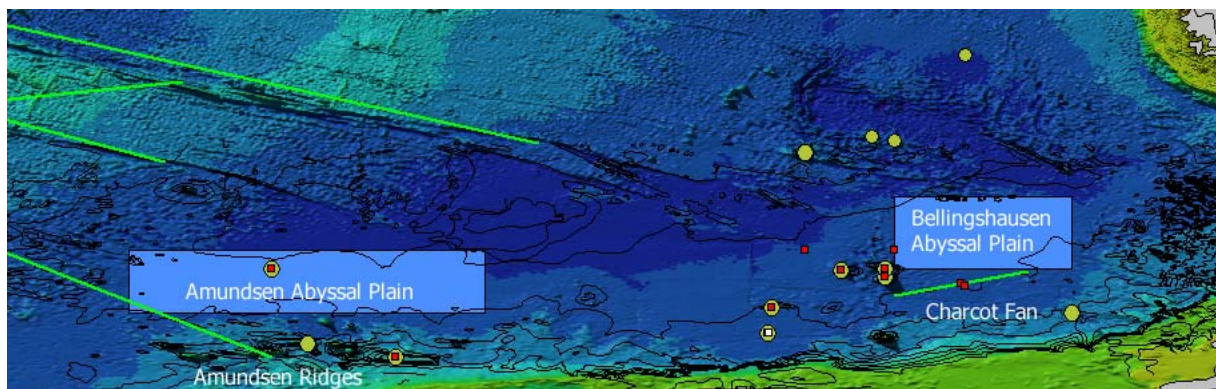
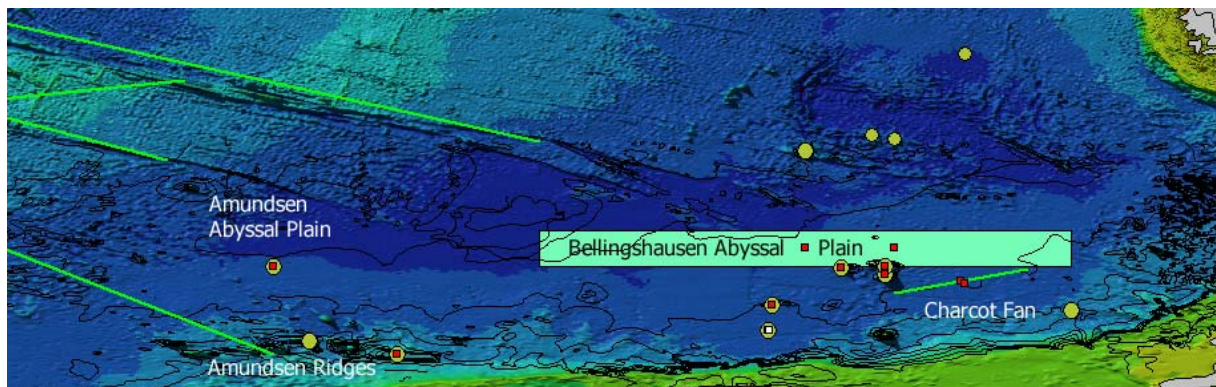
Delete SCUFN feature 2411 (Saunders Basin)

New generic term in CGA – USA: Saunders Bank


Proposal (04) for changes in SCUFN


Features handled in this proposal:

- 68, Amundsen Abyssal Plain
- 2934, Amundsen Ridges
- 163, Bellingshausen Abyssal Plain
- 300, Charcot Fan



Grid: ETOPO2; Isolines: GEBCO

-  New feature coordinates
(Points, lines, polygons)

-  Feature in SCUFN
(Points, lines, polygons)
- Feature in CGA (only points)

Feature Name: Amundsen
Generic Term: Abyssal Plain
B-8 Feature Key: 68
Reason: Adjust generic term of CGA feature #314 –
GBC: Accredited by: BGN, SCGN (Apr. 1985)
USA: Name approved 6/88 (ACUF 228)
Generic term 'plain' is not valid following B-6
and should be changed to 'abyssal plain'
More detailed geometric description as polygon recommended.

Actual positions: USA 65°00'S 125°00'W
GBC 65°00'S 125°00'W

Proposal to SCUFN:

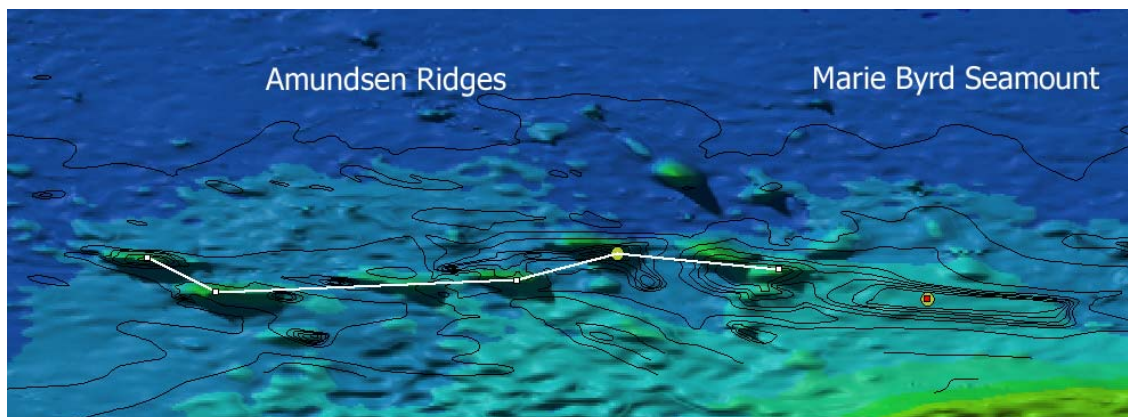
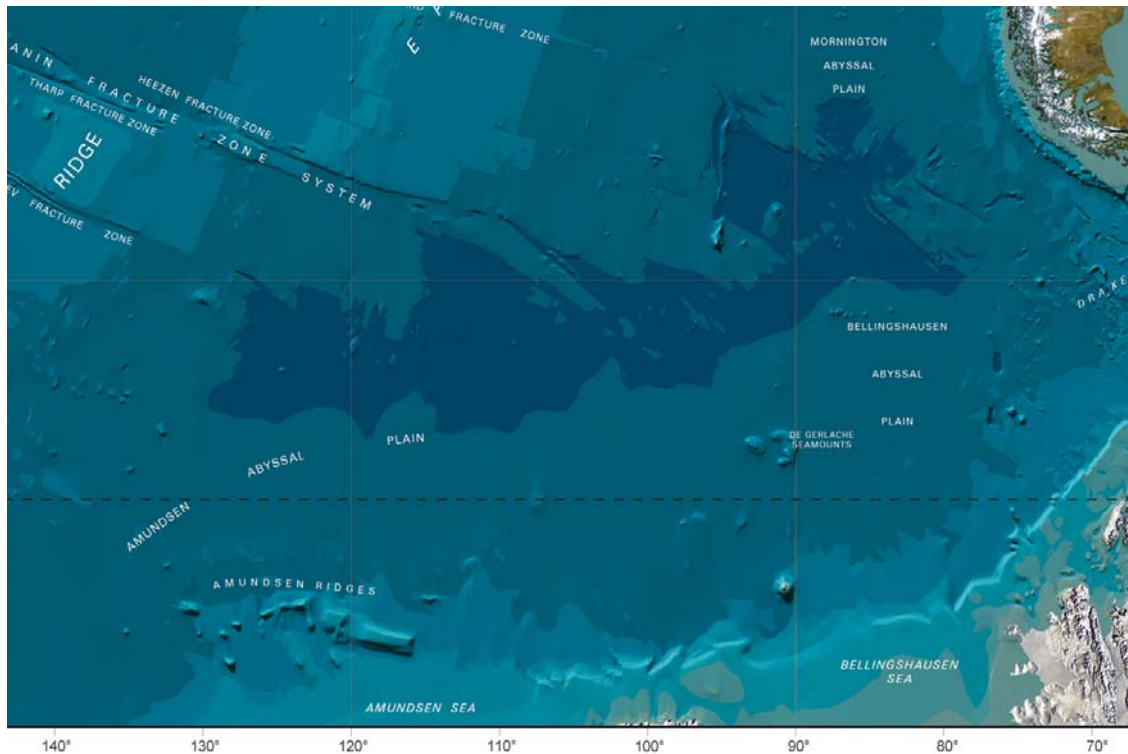
New position in SCUFN and CGA – GBC, USA: As closed polygon:
65°00' S, 125°00' W |
61°00' S, 125°00' W |
61°00' S, 100°00' W |
65°00' S, 100°00' W |
65°00' S, 125°00' W ← list 1st coordinate twice to indicate a closed polygon

Feature Name: Bellingshausen
Generic Term: Abyssal Plain
B-8 Feature Key: 163
Reason: Adjust generic term of CGA feature #1135 –
GBC: (–)
USA: Name approved 4/74 (ACUF 150)
Generic term 'plain' is not valid following B-6
and should be changed to 'abyssal plain'

Actual positions: USA 64°00'S 90°00'W
GBC 64°00'S 95°00'W

Proposal to SCUFN:

New positions in SCUFN and CGA – GBC, USA: As closed polygon:
57°00' S, 94°30' W |
60°30' S, 83°00' W |
57°30' S, 82°00' W |
54°00' S, 93°30' W |
57°00' S, 94°30' W ← list 1st coordinate twice to indicate a closed polygon



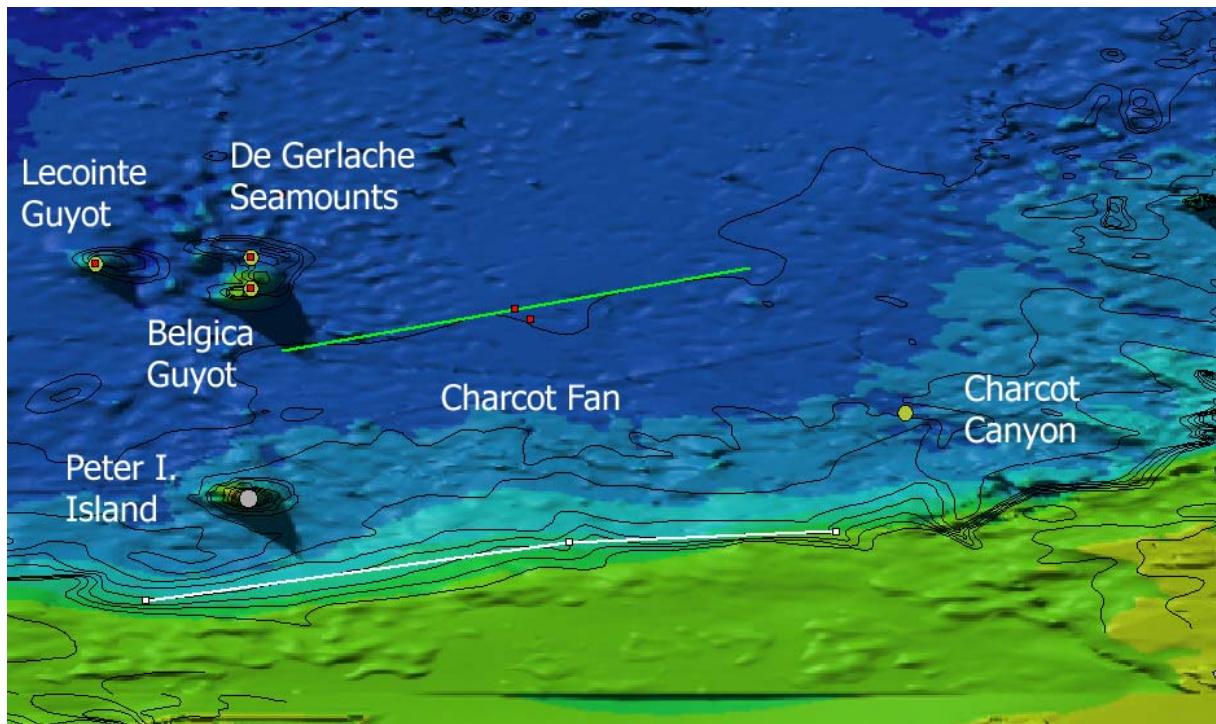
Feature Name: Amundsen
 Generic Term: Ridges
 B-8 Feature Key: 2934
 Reason: Generic term 'ridges' is not valid following B-6 and should be changed to 'seamounts' or 'seamount chain'. Geometric description as line or closed polygon recommended.
 Comment: Change also generic term of CGA feature #320 – GBC.

Proposal to SCUFN:

New positions in SCUFN and CGA – GBC: As line feature

- 69°20' S, 130°35' W |
- 69°53' S, 129°28' W |
- 69°41' S, 124°38' W |
- 69°15' S, 123°00' W | ← actual position in SCUFN
- 69°31' S, 120°25' W

Proposal to SCUFN: discuss generic term ridge or seamounts



Feature Name: Charcot
 Generic Term: Fan
 B-8 Feature Key: 300
 Reason: Adjust positions of CGA feature #2533 –
 GBC: (–)
 USA: approved 6/88 (ACUF 228).
 Actual positions: USA 66°00'S 86°00'W
 GBC 65°50'S 86°15'W
 SCUFN 66°30' S, 90°00' W | 65°10'S, 82°30'W



Proposal to SCUFN:



New positions in SCUFN and CGA – GBC, USA: As line feature:

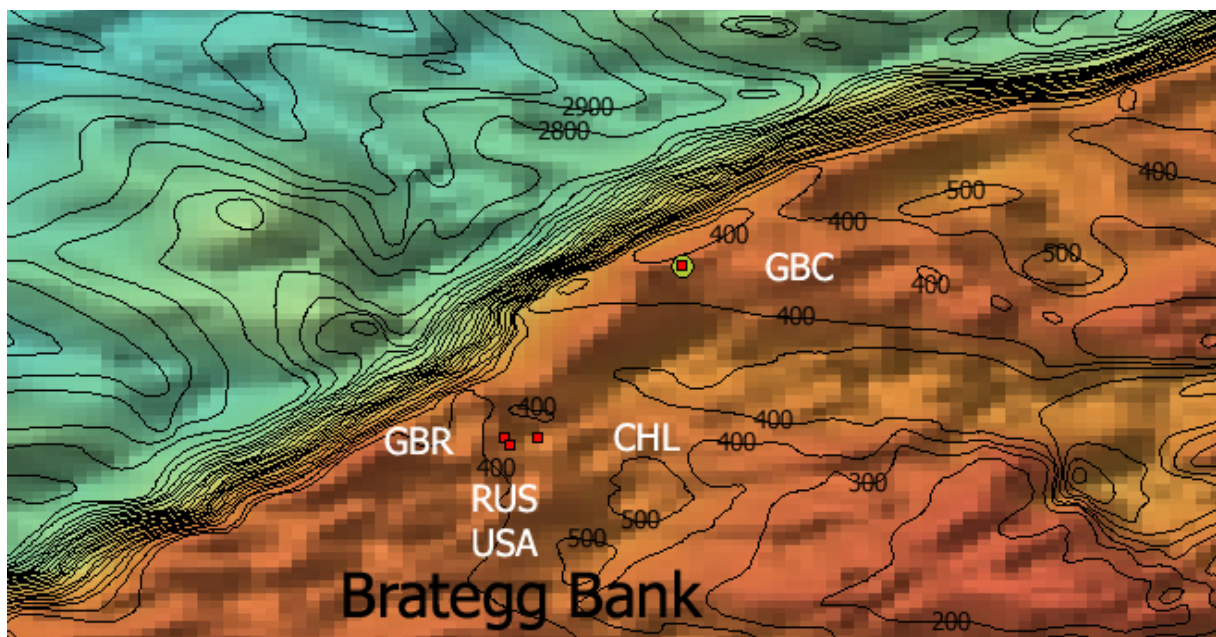
70°30' S, 92°11' W |
 69°35' S, 85°25' W |
 69°23' S, 81°07' W

Proposal (05) for changes in SCUFN

Features handled in this proposal:
211, Brategg Bank

-   New feature coordinates
(Points, lines, polygons)

-   Feature in SCUFN
(Points, lines, polygons)
- Feature in CGA (only points)



Grid: ETOPO2; Isolines: GEBCO

Feature Name: Brategg
 Generic Term: Bank
 B-8 Feature Key: 211
 Reason: Adjust position of CGA feature #1768 –
 CHL: --
 GBC: --
 GBR: („GBR chart 1950; GBR gaz.1955;
 coordinates corrected GBR gaz.1977”).
 RUS: --
 USA: Name of bank reaffirmed 7/64 (ACUF 30)
 Comment: Position of RUS, USA could retain as the centered positions of
 the feature.
 Actual positions:

CHL	65°15'S	68°31'W
GBR	65°15'S	68°36'W
RUS	65°16'S	68°35'W
USA	65°16'S	68°35'W
GBC	64°50'S	68°10'W



Proposal to SCUFN:


New position in SCUFN and CGA – CHL, GBR, GBC: Adopt from RUS and USA:
 65°13' S, 68°08' W

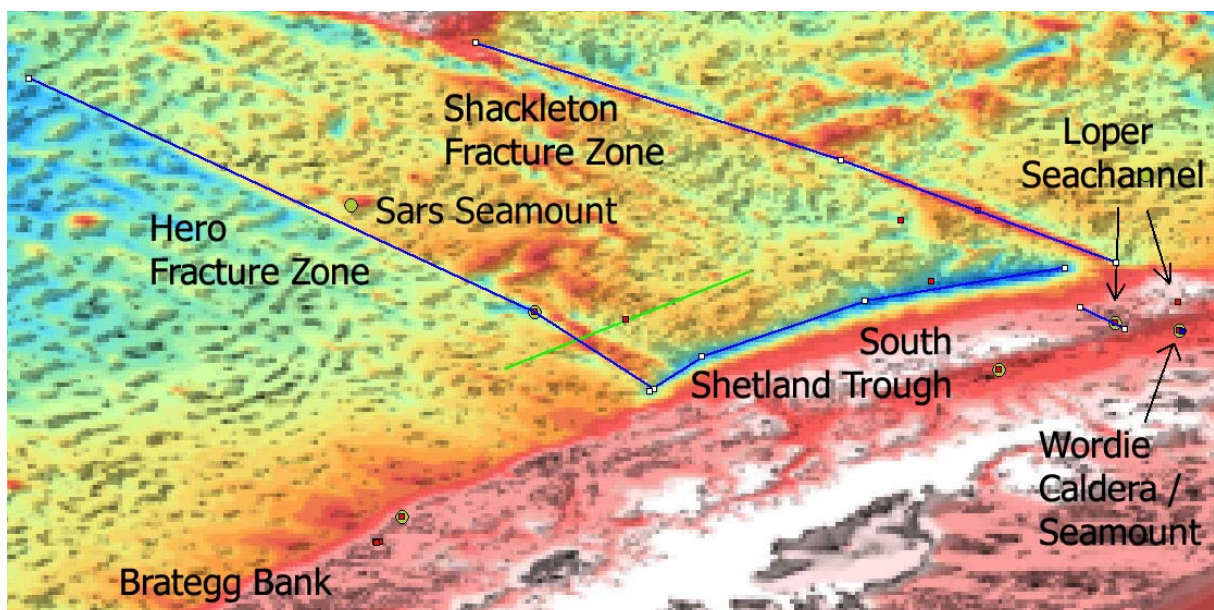
Proposal (06) for changes in SCUFN

Features handled in this proposal:

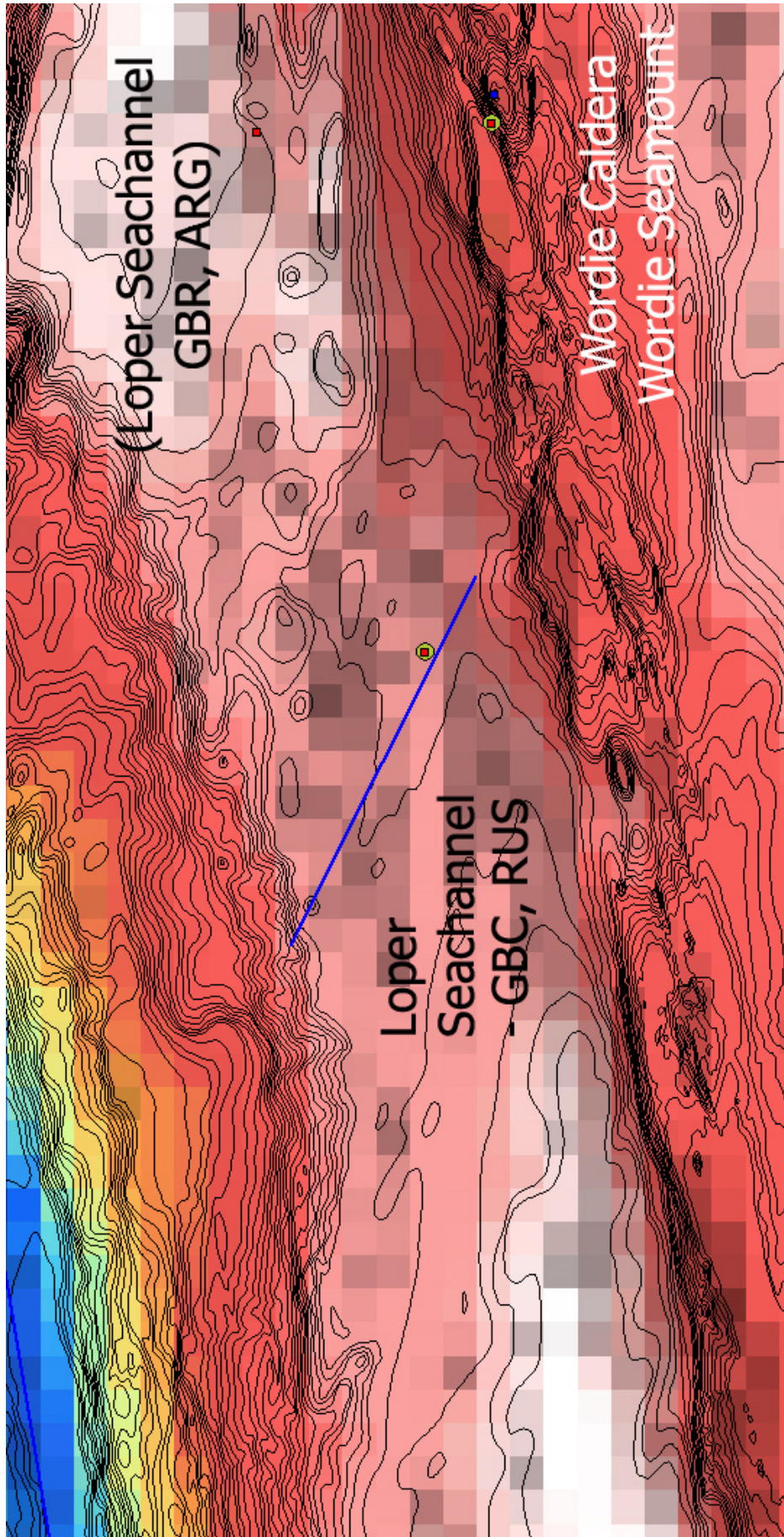
- 2422, Loper Seachannel
- 704, Hero Fracture Zone
- 1466, Sars Seamount
- 1512, Shackleton Fracture Zone
- 1586, South Shetland Trough
- 3113, Wordie Caldera / Wordie Seamount

-   New feature coordinates
(Points, lines, polygons)

-   Feature in SCUFN
(Points, lines, polygons)
- Feature in CGA (only points)



Grid: ETOPO2



Grid: ETOPO2, Isolines: AWI-BCWS 533

Feature Name: Loper
Generic Term: Seachannel
B-8 Feature Key: 2422
Reason: Adjust generic term and positions of CGA feature #8637 –
GBC: --

The actual generic term 'seachannel' is possibly inadequate and may be changed to 'passage'.

ARG: --

The actual name and generic term 'Espíritu Santo Pasaje' is possibly inadequate and should be changed to 'seachannel' (or passage')

GBR: --

The actual generic term 'channel' is not valid in B-6 and should be changed to 'seachannel' (or 'passage')

RUS: --

The actual generic term 'strait' is not valid in B-6 and should be changed to 'seachannel' (or 'passage')

Geometric description as line recommended.
Actual positions: ARG 61°20'S 55°28'W
GBR 61°20'S 55°28'W
RUS 61°40'S 56°30'W
GBC 61°40'S 56°30'W

Proposal to SCUFN:

New position in SCUFN and CGA – ARG, GBC, GBR, RUS: As line feature:
61°46' S, 56°21' W |
61°24' S, 57°05' W

It should be discussed whether Loper is a seachannel or a passage.

⇒ **Possibly new generic term in SCUFN and CGA:** Loper Passage

Feature Name: Hero
Generic Term: Fracture Zone
B-8 Feature Key: 704
Reason: Geometric description as line recommended
(up to now: single position: 61°30'S, 66°00'W)
Comment: Change also positions of CGA feature #3601–
GBC: --
USA: Name approved 6/87 (ACUF 225)

Proposal to SCUFN:

New position in SCUFN and CGA – GBC, USA: As line feature:

62°44' S, 64°04' W |

61°30' S, 66°00' W |

57°40' S, 74°16' W

← actual SCUFN / CGA position



Grid: ETOPO2; Isolines GEBCO

Feature Name: Sars

Generic Term: Seamount

B-8 Feature Key: 1466

Reason: Position of the feature is conspicuous:

Reference datasets shows ambiguity.

Comment: Feature is not listed in CGA

Adopt feature in CGA – GBC.

Feature Name: Shackleton

Generic Term: Fracture Zone

B-8 Feature Key: 1512

Reason: Adjust positions of CGA feature #16767 –

GBC: --

USA: Name approved 6/87 (ACUF 225)

Geometric description as line recommended

Actual positions: USA 60°00'S 60°00'W

GBC 59°50'S 58°45'W

Proposal to SCUFN:

New positions in SCUFN and CGA – GBC, USA: As line feature:

60°40' S, 56°30' W |
59°00' S, 61°00' W |
57°06' S, 66°58' W

Feature Name: South Shetland

Generic Term: Trough

B-8 Feature Key: 1586

Reason: Adjust positions of CGA feature #13741 –
GBC: Accredited by: SCGN (May 1993).
USA: Name approved 10/77 (ACUF 177).
Improper position; More coordinates for line feature needed.
Possibly improper generic term “Trough”.

Comment: South Shetland “Trench” exists in SCUFN as feature 2413
without coordinates or any other properties but with link to South
Shetland Trough.

Actual positions:

CGA:	USA	61°00'S	59°30'W
	GBC	61°37'S	64°30'W
SCUFN:		60°50' S, 62°30' W	
		62°25' S, 66°30' W	

Proposal to SCUFN:

New positions in SCUFN and CGA – GBC, USA: As line feature:

62°48' S, 64°09' W |
62°12' S, 63°13' W |
61°18' S, 60°32' W |
60°46' S, 57°20' W

B-8 should be adjusted; Discuss ‘trench’ or ‘trough’

⇒ if feature is a trench:

SCUFN feature properties

from SCUFN feature 1586 (South Shetland Trough)
to SCUFN feature 2413 (South Shetland Trench).

Delete SCUFN feature 1586 (South Shetland Trough).

Change generic term in CGA – GBC, USA:

South Shetland Trench.

Feature Name: Wordie
Generic Term: Caldera
B-8 Feature Key: 3113
Reason: Improper position of CGA feature #17381 –
GBC: (04/2001)
USA: --

Actual positions in CGA: USA 61°48'S 55°27'W
GBC 61°48'S 55°27'E

Comment:: Change *remark* in SCUFN gazetteer:
“Shown as Wordie Seamount in ACUF Gazetteer”.
⇒ In CGA, Wordie Seamount is a different feature with #18301
and waterdepth of ~800 m, but with identical position (see
below).
Feature has small extension ⇒ arc sec necessary

New position in SCUFN and CGA – GBC, USA: 61°48'22" S, 55°23'38" W
Change remark in SCUFN.



Feature Name: Wordie
Generic Term: Seamount
B-8 Feature Key: (not registered in SCUFN)
Reason: Improper position of CGA feature #18301 –
USA: Name approved 8/03 (ACUF 298)



New position in CGA - USA:
same as Wordie Caldera: 61°48'22" S, 55°23'38" W

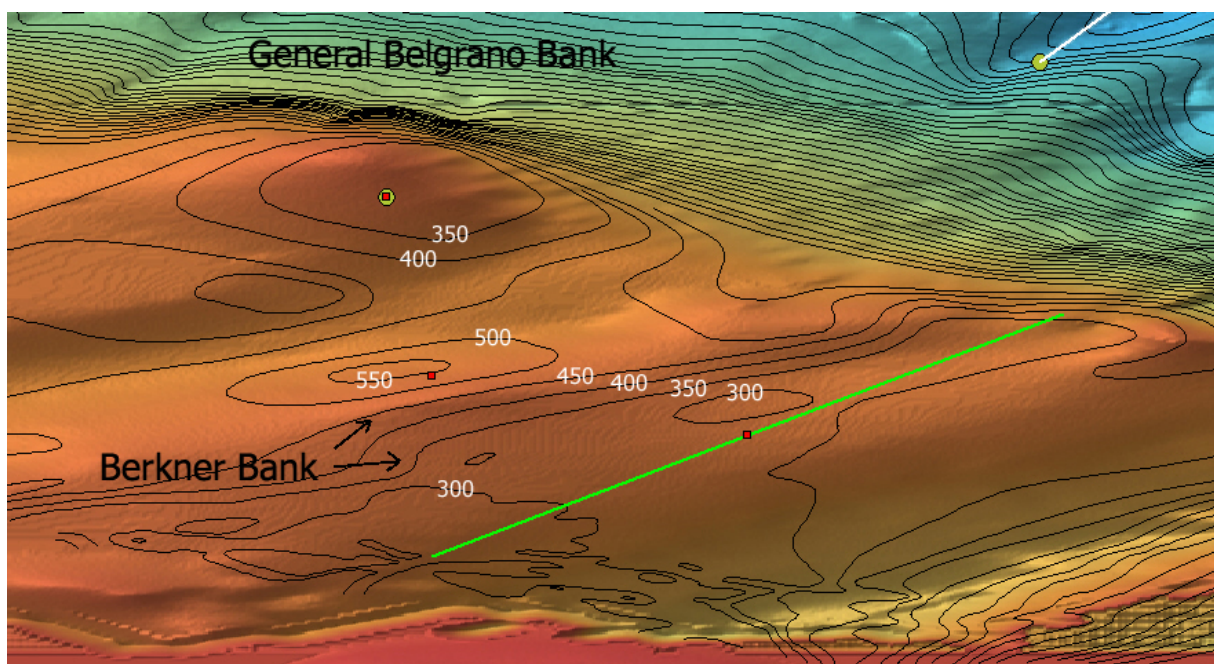
Proposal to SCUFN:
Discuss wheather or not to adopt 'Wordie Seamount' for SCUFN

Proposal (07) for changes in SCUFN

Features handled in this proposal:
2626, Berkner Bank
600, General Belgrano Bank

-   New feature coordinates
(Points, lines, polygons)

-   Feature in SCUFN
(Points, lines, polygons)
- Feature in CGA (only points)



Grid: ETOPO2; Isolines: GEBCO

Feature Name: General Belgrano
Generic Term: Bank
B-8 Feature Key: 600
Reason: Adjust name of CGA feature #5216 –
GBC: --
USA: Name approved 6/88 (ACUF 228)
Feature is named 'Belgrano Bank'
Comment: Change of position is not necessary.

Proposal to CGA:

Change name in CGA – USA: General Belgrano Bank.

Feature Name: Berkner
Generic Term: Bank
B-8 Feature Key: 2626
Reason: Adjust position of CGA feature #1225 –
GBC: Accredited by: BGN (Jun. 1973)
USA: Name approved 4/73 (ACUF 144)
Comment: Position given by USA is situated in a basin
Actual positions in CGA: USA **75°00'S, 48°00'W**
GBC **75°39'S, 44°30'W**

in SCUFN: 77°00'S, 48°00'W |
74°18'S, 41°00'W

Proposal to CGA:

New position in CGA – USA: Adopt from SCUFN as line feature:
77°00'S, 48°00'W |
74°18'S, 41°00'W

Ralf Krockner
Van-Ronzelen-Straße 2
27568 Bremerhaven - Germany








Bremerhaven, March 2008

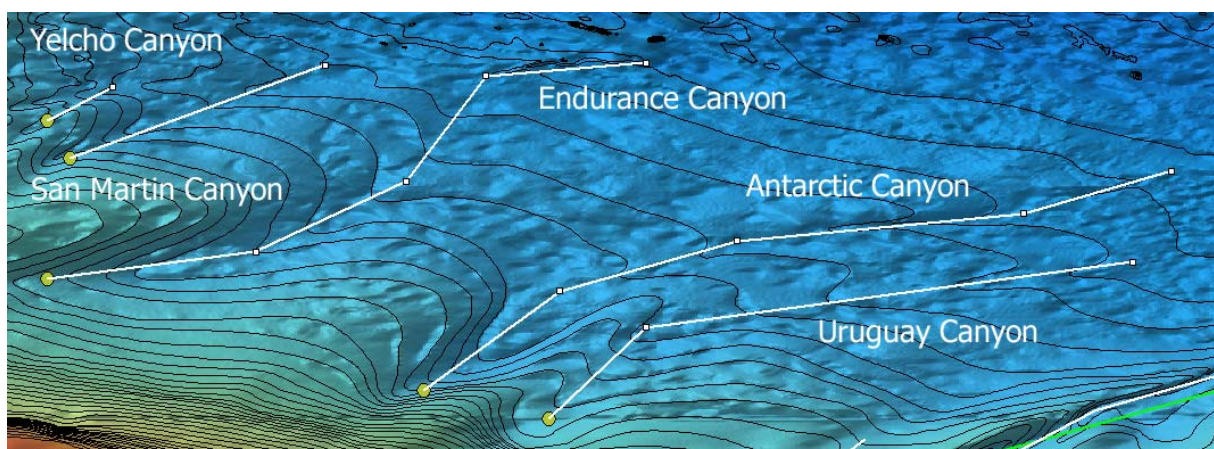
Proposal (08) for changes in SCUFN

Features handled in this proposal:

81, Antarctic Canyon
503, Endurance Canyon
1449, San Martin Canyon
1733, Uruguay Canyon
1838, Yelcho Canyon

-    New feature coordinates
(Points, lines, polygons)

-   Feature in SCUFN
(Points, lines, polygons)
- Feature in CGA (only points)



Grid: ETOPO2; Isolines: GEBCO

Feature Name: Antarctic
Generic Term: Canyon
B-8 Feature Key: 81
Reason: Geometric description as line recommended.
Comment: Change also positions of CGA – GBC feature #418

Proposal to SCUFN:

New positions in SCUFN and CGA – GBC: As line feature:
71°30' S, 41°15' W | ← actual SCUFN position
69°43' S, 38°48' W |
68°50' S, 35°38' W |
68°20' S, 30°30' W |
67°34' S, 27°50' W

Feature Name: Endurance
Generic Term: Canyon
B-8 Feature Key: 503
Reason: Geometric description as line recommended.
Comment: Change also positions of CGA – GBC feature #4256

Proposal to SCUFN:

New positions in SCUFN and CGA – GBC: As line feature:
69°30' S, 48°00' W | ← actual SCUFN position
69°01' S, 44°16' W |
67°45' S, 41°33' W |
65°52' S, 40°08' W |
65°38' S, 37°16' W

Feature Name: San Martin
Generic Term: Canyon
B-8 Feature Key: 1449
Reason: Geometric description as line recommended.
Comment: Change also positions of CGA – GBC feature #12671

Proposal to SCUFN:

New positions in SCUFN and CGA – GBC: As line feature:
67°20' S, 47°35' W | ← actual SCUFN position
65°40' S, 43°01' W

Feature Name: Uruguay
Generic Term: Canyon
B-8 Feature Key: 1733
Reason: Geometric description as line recommended.
Comment: Change also positions of CGA – GBC feature #15223

Proposal to SCUFN:

New positions in SCUFN and CGA: As line feature:
72°00' S, 39°00' W | ← actual SCUFN position
70°23' S, 37°16' W |
69°12' S, 28°33' W

Feature Name: Yelcho
Generic Term: Canyon
B-8 Feature Key: 1838
Reason: Geometric description as line recommended.
Possibly improper localisation.
Comment: Change also positions of CGA – GBC feature #16362

Proposal to SCUFN:

New positions in SCUFN and CGA: As line feature:
66°40' S, 48°00' W | ← actual SCUFN position
66°05' S, 46°50' W

Ralf Krocke
Van-Ronzelen-Straße 2
27568 Bremerhaven - Germany



Bremerhaven, March 2008

Proposal (09) for changes in SCUFN

Features handled in this proposal:

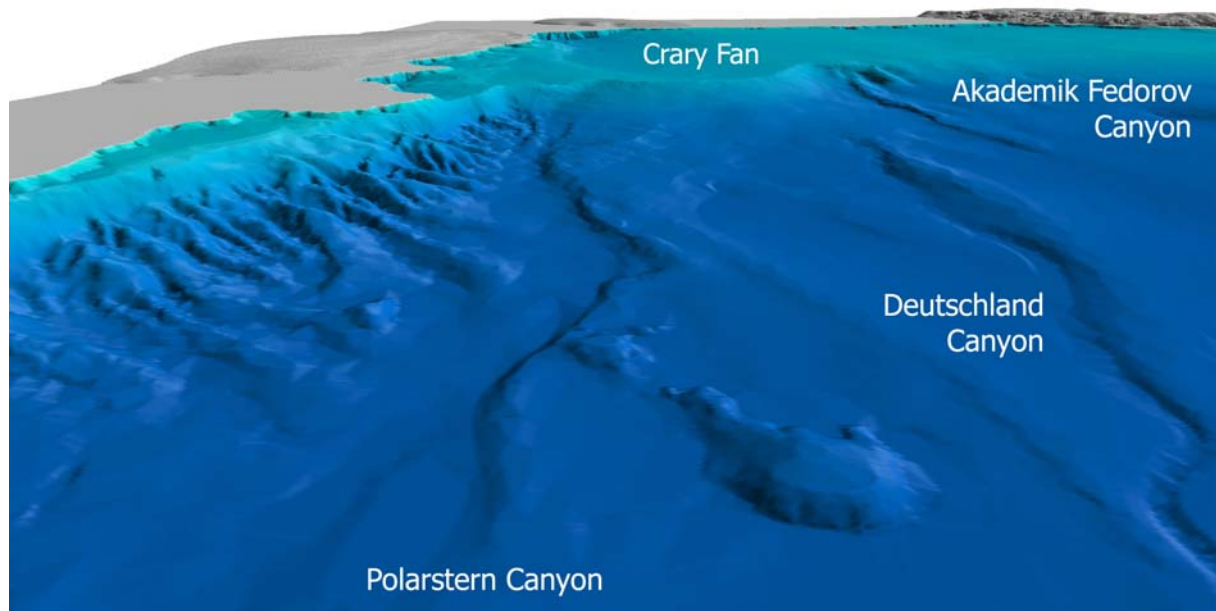
2671, Akademik Fedorov Canyon

2680, Crary Fan



426, Deutschland Canyon



2702, McDonald Bank

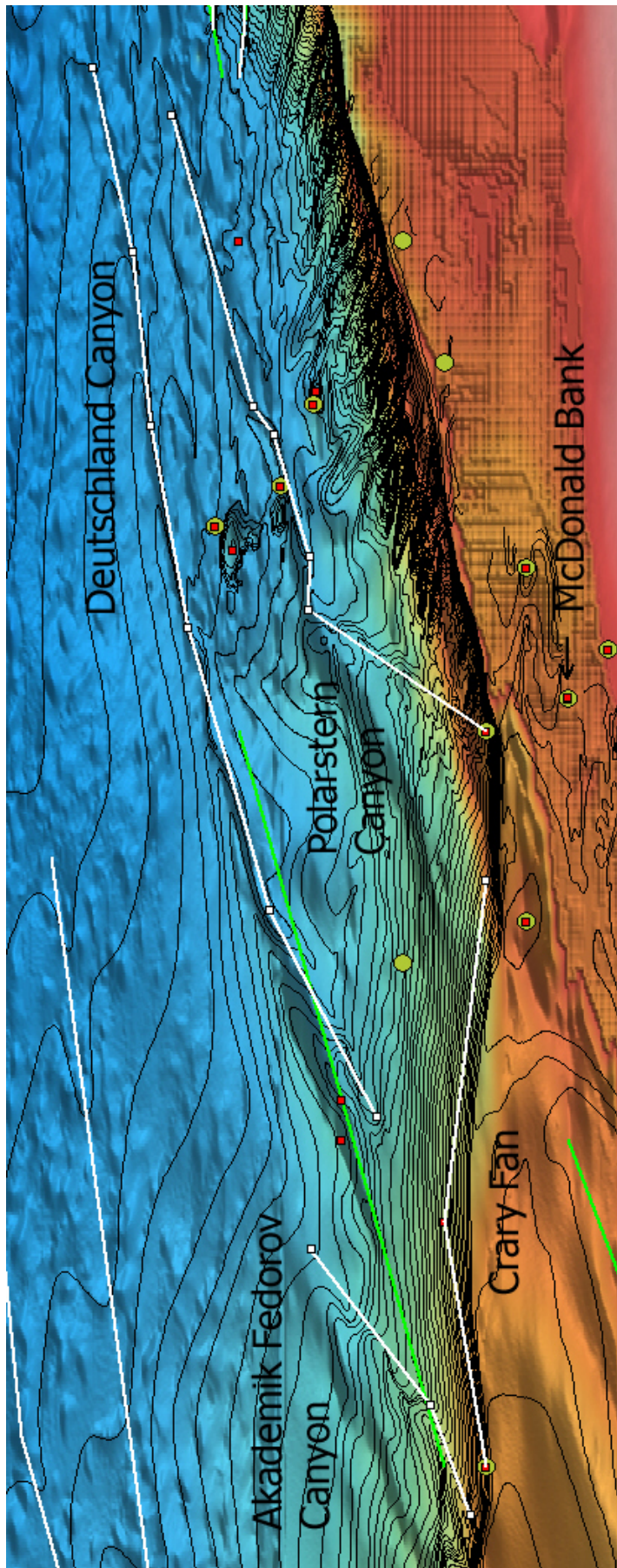
2708, Polarstern Canyon



Grid: AWI-BCWS shown in Fledermaus

-   **New feature coordinates**
(Points, lines, polygons)

-   **Feature in SCUFN**
(Points, lines, polygons)
- **Feature in CGA (only points)**



Grid: ETOPO2, Isolines: AWI-BCWS sheets 552, 553, 567, 568

Feature Name: Akademik Fedorov
Generic Term: Canyon
B-8 Feature Key: 2671
Reason: Adjust name and positions of CGA feature #144 –
GBC: Accredited by: SCUFN (Jun. 1997)
USA: Name approved 6/97 (ACUF 271);
Fedorov is written as 'Federov' in CGA feature #144 – USA.
Improper position;
Geometric description as line recommended.
Actual positions: USA 72°45'S 32°00'W
GBC 72°45'S 31°30'W

Proposal to SCUFN:

New positions in SCUFN and CGA – GBC, USA: As line feature:
74°18' S, 36°35' W |
73°50' S, 35°15' W |
72°22' S, 33°20' W

Proposal to CGA:

Change of name in CGA – USA: Akademik Fedorov Canyon

Feature Name: Crary
Generic Term: Fan
B-8 Feature Key: 2680
Reason: Adjust position of CGA feature #3091 –
GBC: Accredited by: SCUFN (Jun. 1997).
USA: Name approved 6/97 (ACUF 271).
Geometric description as line recommended.
Actual positions: USA 74°00'S 33°00'W
GBC 74°30'S 36°00'W

Proposal to SCUFN:

New positions in SCUFN and CGA – GBC, USA: As line feature:
74°30' S, 36°00' W | ← actual position in SCUFN
74°00' S, 33°00' W | ← actual position in CGA – USA
74°30' S, 28°50' W

Feature Name: Deutschland
Generic Term: Canyon
B-8 Feature Key: 426
Reason: Improper position of CGA feature #3583 – GBC: --
Geometric description as line recommended.
Actual position: 73°30'S, 29°50'W

Proposal to SCUFN:

New positions in SCUFN and CGA - GBC: As line feature:

73°10' S, 31°42' W | 71°52' S, 29°13' W |
70°52' S, 25°45' W | 70°25' S, 23°16' W |
70°12' S, 21°12' W | 69°43' S, 18°54' W

Feature Name: McDonald

Generic Term: Bank

B-8 Feature Key: 2702

Reason: Adjust name and position of CGA feature #9258 –
GBC: Accredited by: SCUFN (Jun. 1997)
USA: Name approved 6/97 (ACUF 271).
Character within feature name 'Mcdonald Bank'
of CGA feature #9258 – GBC is lower case.

Actual positions: USA 75°30'S 26°35'W
GBC 75°30'S 26°36'W

Proposal to CGA:

New position in CGA – USA: Adopt from GBC: 75°30' S, 26°36 W

Revise name in CGA – GBC: McDonald Bank

Feature Name: Polarstern

Generic Term: Canyon

B-8 Feature Key: 2708

Reason: Adjust position of CGA feature #11425 –
GBC: Accredited by: SCUFN (Jun. 1997)
USA: Name approved 6/97 (ACUF 271).
Geometric description as line recommended.

Actual positions: USA 71°30'S 21°00'W
GBC 74°30'S 27°00'W

Proposal to SCUFN:

New positions in SCUFN and CGA – GBC, USA: As line feature:

74°30' S, 27°00' W | ← actual position in SCUFN
72°20' S, 25°31' W |
72°22' S, 24°55' W |
71°55' S, 23°22' W |
71°39' S, 23°01' W |
70°41' S, 19°28' W



Proposal (10) for changes in SCUFN



Features handled in this proposal:

2672, Andenes Knoll

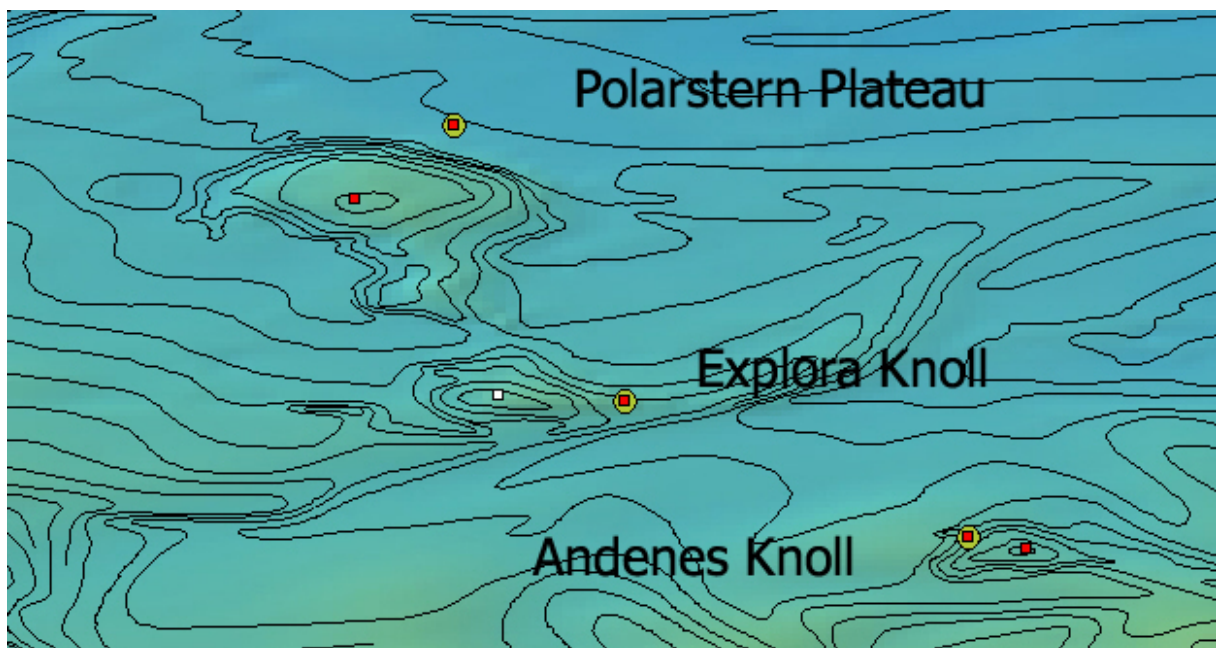
3086, Explora Knoll

2709, Polarstern Plateau

▣   **New feature coordinates**
(Points, lines, polygons)

●   **Feature in SCUFN**
(Points, lines, polygons)

■ **Feature in CGA (only points)**



Grid: ETOPO2, Isolines: AWI-BCWS sheets 553 & 568

Feature Name: Andenes
Generic Term: Knoll
B-8 Feature Key: 2672
Reason: Adjust position of CGA feature #343 –
GBC: Accredited by SCUFN (Jun. 1997)
USA: Name approved 6/97 (ACUF 271)
Actual positions: USA 72°26'S 22°50'W
GBC 72°24'S 23°00'W

Proposal to SCUFN:

New position in SCUFN and CGA - GBC: Adopt from USA:
27° 26' S, 22° 50' W

Feature Name: Explora
Generic Term: Knoll
B-8 Feature Key: 3086
Reason: Improper position of CGA feature #4412 –
GBC: Accredited by SCUFN (Jun. 1997)
USA: Name approved 6/97 (ACUF 271)
Actual position: 72°00'S, 24°00'W

Proposal to SCUFN:

New position in SCUFN and CGA – GBC, USA: As point feature:
71°59'S, 24°22'W

Feature Name: Polarstern
Generic Term: Plateau
B-8 Feature Key: 2709
Reason: Adjust generic term and position of CGA feature #11426 – GBC:
Accredited by SCUFN (Jun. 1997)
USA: Name approved 6/97 (ACUF 271)
The actual generic term 'knoll' is inadequate
and should be changed to 'plateau'
Actual position: USA 71°25'S 24°47'W
GBC 71°12'S 24°30'W

Proposal to SCUFN:

New position in SCUFN and CGA - GBC: Adopt from USA:
71° 25' S, 24° 47' W

Proposal to CGA:

New generic term in CGA – USA:
Polarstern Plateau

Discuss with ACUF the generic term 'Knoll'

Ralf Krocke
Van-Ronzelen-Straße 2
27568 Bremerhaven - Germany





Bremerhaven, March 2008

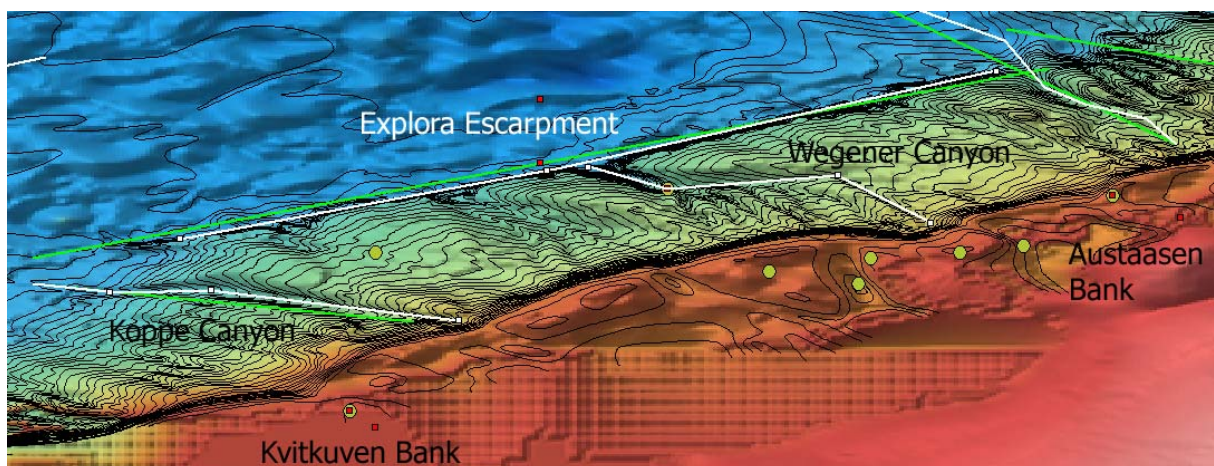
Proposal (11) for changes in SCUFN

Features handled in this proposal:

- 2676, Austaasen Bank
- 2687, Explora Escarpment
- 2697, Koppe Canyon
- 2698, Kvitkuven Bank
- 1929, Wegener Canyon

- ▣  New feature coordinates
(Points, lines, polygons)

-  Feature in SCUFN
(Points, lines, polygons)
- Feature in CGA (only points)



Grid: ETOPO2; Isolines: GEBCO

Feature Name: Austaasen
Generic Term: Bank
B-8 Feature Key: 2676
Reason: Adjust position of CGA feature #647 –
GBC: Accredited by: SCUFN (Jun. 1997)
NOR: Feature is written differently as Auståsen.
Feature has no generic term.
Features describe different structure.
Actual position: GBC: 70°48'S, 10°30'W
NOR: 70°59'S, 9°58'W

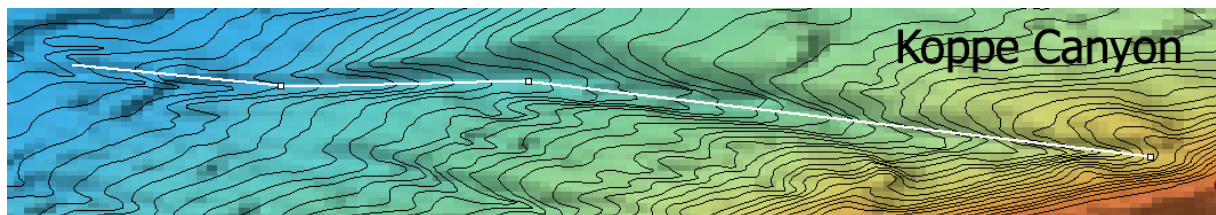
Proposal to CGA:

Examine 'Auståsen' as different and independent feature in CGA with an own discrete feature key. 'Auståsen' (proposal from NOR) is a land feature on the continent of Antarctica.

Feature Name: Explora
Generic Term: Escarpment
B-8 Feature Key: 2687
Reason: Adjust position of CGA feature #4411 –
GBC: Accredited by: SCUFN (Jun. 1997)
USA: Name approved 6/97 (ACUF 271)
Geometric description as line recommended.

Proposal to SCUFN:

New positions in SCUFN and CGA – GBC, USA: As line feature:
71°09' S, 17°50' W |
70°35' S, 14°50' W |
69°49' S, 11°25' W



Feature Name: Koppe
Generic Term: Canyon
B-8 Feature Key: 2697
Reason: Geometric description as line recommended
Comment: Change also positions of CGA feature #7754.
Accredited by: SCUFN (Jun. 1997).

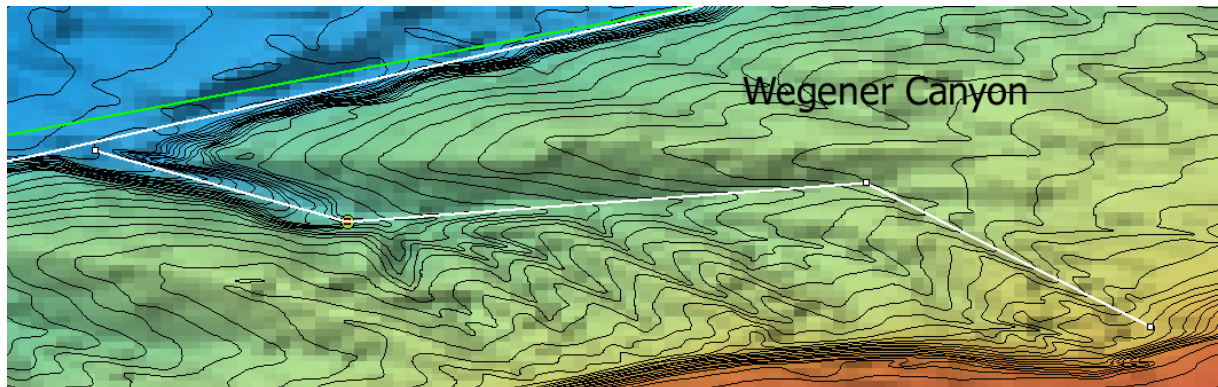
Proposal to SCUFN:

New positions in SCUFN and CGA - GBC: As line feature:
71°47' S, 15°39' W |
71°33' S, 17°36' W |
71°34' S, 18°19' W |
71°30' S, 19°00' W ← actual position in SCUFN

Feature Name: Kvitkuven
Generic Term: Bank
B-8 Feature Key: 2698
Reason: Adjust position of CGA feature #7959 –
GBC: Accredited by: SCUFN (Jun. 1997)
NOR: **Feature has no generic term**
Feature describe different structure.
Actual positions: GBC: 72°30'S, 16°30'W
NOR: 72°38'S, 16°18'W.

Proposal to CGA:

Examine 'Kvitkuven' as different and independent feature in CGA with an own discrete feature key. 'Kvitkuven' (proposal from NOR) is a land feature on the continent of Antarctica.



Feature Name: Wegener
Generic Term: Canyon
B-8 Feature Key: 1929
Reason: Geometric description as line recommended.
Comment: Change also position of CGA feature # 15845 –
GBC: Accredited by: **SCGN** (Jun. **1991**)
USA: Name approved 7/89 (ACUF 233)

Proposal to SCUFN:

New positions in SCUFN and CGA – GBC, USA: As line feature:
71°01' S, 11°56' W |
70°39' S, 12°40' W |
70°45' S, 14°00' W | ← actual position in SCUFN
70°34' S, 14°39' W

Change year of accreditation or institution (SCUFN).


Ralf Krocke
Van-Ronzelen-Straße 2
27568 Bremerhaven - Germany




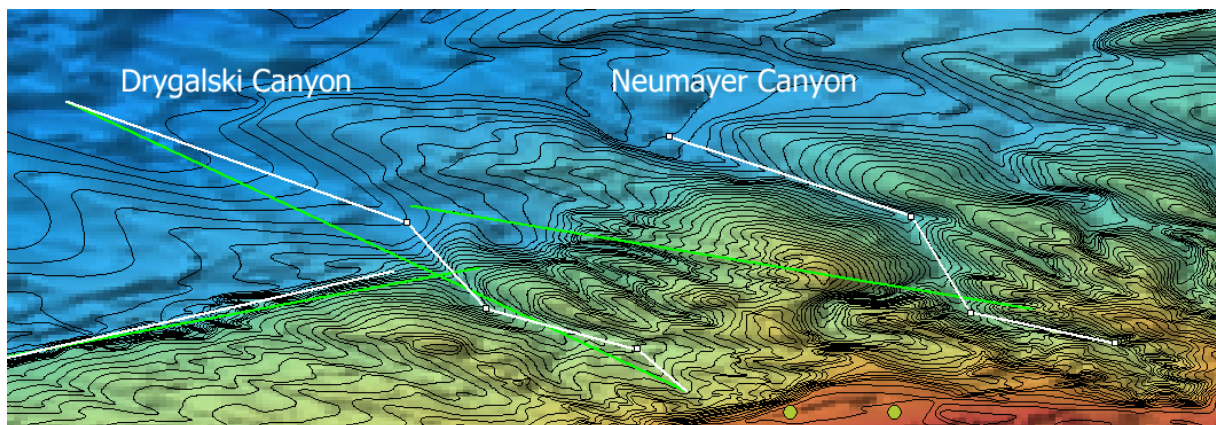
Bremerhaven, March 2008

Proposal (12) for changes in SCUFN

Features handled in this proposal:
2685, Drygalski Canyon
2705, Neumayer Canyon

-  ■ New feature coordinates
(Points, lines, polygons)

-  ■ Feature in SCUFN
(Points, lines, polygons)
- Feature in CGA (only points)



Grid: ETOPO2; Isolines: GEBCO

Feature Name: Drygalski
Generic Term: Canyon
B-8 Feature Key: 2685
Reason: More coordinates for line feature needed.
Comment: Change also position of CGA feature #3900 –
GBC: Accredited by: SCUFN (Jun. 1997)

Proposal to SCUFN:

New positions in SCUFN and CGA – GBC: As line feature:
70°24' S, 10°00' W | ← actual position in SCUFN
70°12' S, 10°14' W |
70°00' S, 10°58' W |
69°35' S, 11°21' W |
69°00' S, 13°00' W | ← actual position in SCUFN

Feature Name: Neumayer
Generic Term: Canyon
B-8 Feature Key: 2705
Reason: More coordinates for line feature needed.
Comment: Change also position of CGA feature #10185 –
GBC: Accredited by: SCUFN (Jun. 1997)


Proposal to SCUFN:


New positions in SCUFN and CGA – GBC: As line feature:
70°10' S, 7°56' W |
70°01' S, 8°38' W |
69°33' S, 8°55' W |
69°10' S, 10°05' W

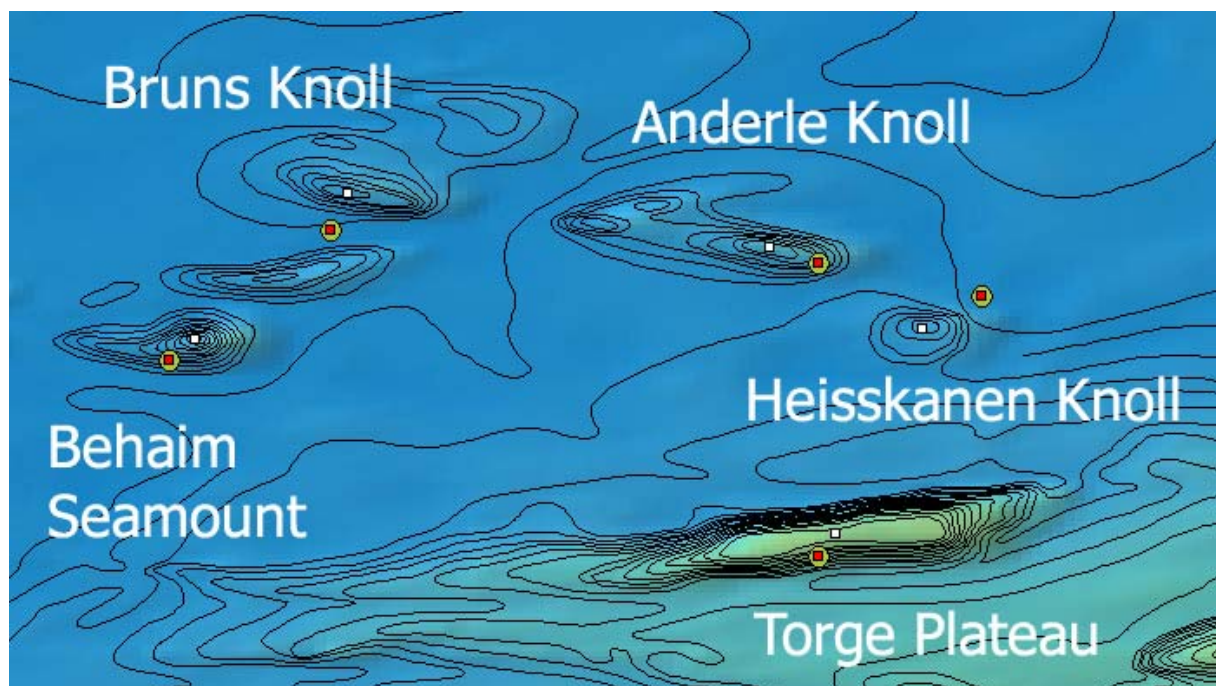
Proposal (13) for changes in SCUFN

Features handled in this proposal:

2673, Anderle Knoll
2677, Behaim Seamount
2678, Bruns Knoll
2691, Heiskanen Knoll
2717, Torge Plateau

-  ■ New feature coordinates
(Points, lines, polygons)

-  ■ Feature in SCUFN
(Points, lines, polygons)
- Feature in CGA (only points)



Grid: ETOPO2; Isolines: AWI-BCWS Sheet 553

Feature Name: Anderle
Generic Term: Knoll
B-8 Feature Key: 2673
Reason: Improper position of CGA feature #344 –
GBC: Accreditation: SCUFN (Jun. 1997)

Proposal to SCUFN:

New position in SCUFN and CGA – GBC: As point feature:
: 67°27' S, 9°09' W

Feature Name: Behaim
Generic Term: Seamount
B-8 Feature Key: 2677
Reason: Improper position of CGA feature #1096 –
GBC :Accreditation: SCUFN (Jun. 1997)

Proposal to SCUFN:

New position in SCUFN and CGA – GBC: As point feature:
67°44' S, 10°55' W

Feature Name: Bruns
Generic Term: Knoll
B-8 Feature Key: 2678
Reason: Improper position
Comment: Accreditation: SCUFN (Jun. 1997)
Change CGA feature #1952

Proposal to SCUFN:

New position in SCUFN and CGA – GBC: As point feature:
67°17' S, 10°27' W

Feature Name: Heiskanen
Generic Term: Knoll
B-8 Feature Key: 2691
Reason: Improper position of CGA feature #6200 –
GBC: Accreditation: SCUFN (Jun. 1997)

Proposal to SCUFN:

New position in SCUFN and CGA – GBC: As point feature:
67°42' S, 8°41' W

Feature Name: Torge
Generic Term: Plateau
B-8 Feature Key: 2717
Reason: Improper position of CGA feature #14822 –
GBC: Accreditation: SCUFN (Jun. 1997)

Proposal to SCUFN:

New position in SCUFN and CGA – GBC: As point feature:
68°20' S, 8°57' W

Ralf Krockner
Van-Ronzelen-Straße 2
27568 Bremerhaven - Germany







Bremerhaven, March 2008

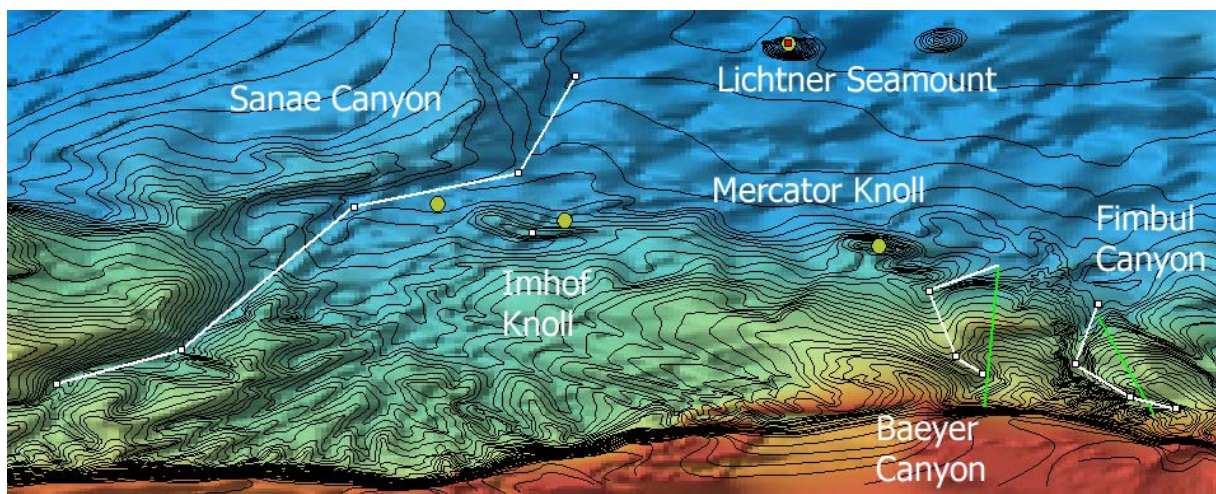
Proposal (14) for changes in SCUFN

Features handled in this proposal:

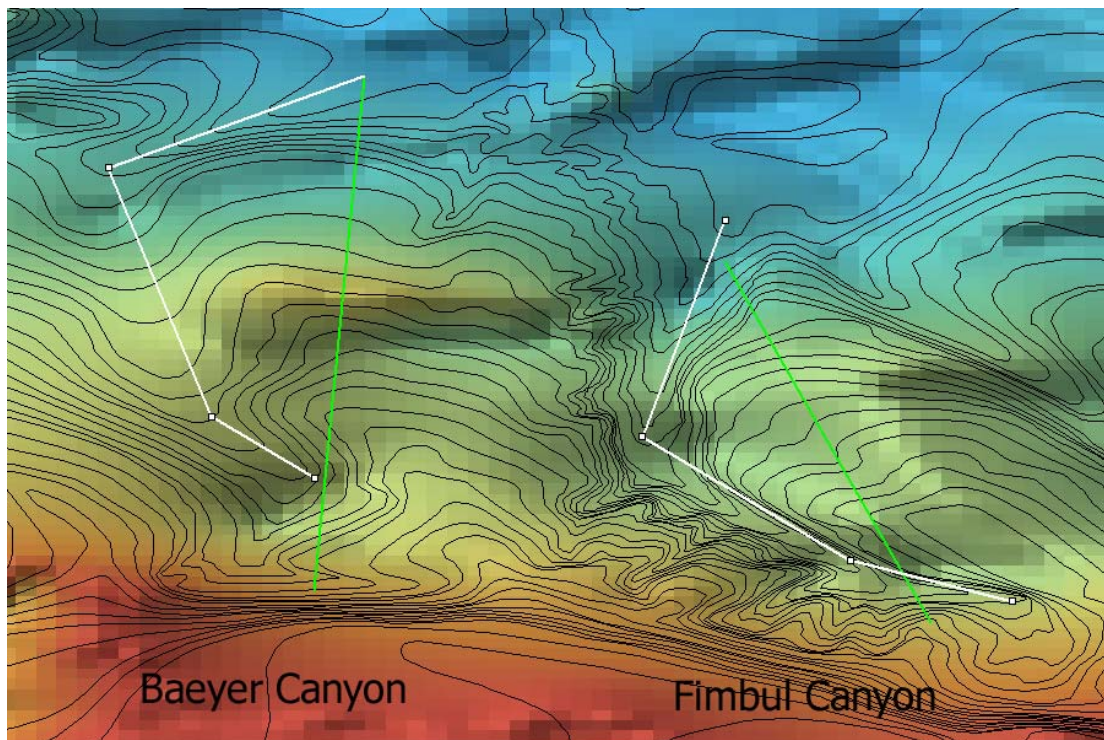
2750, Bayer Canyon
2689, Fimbul Canyon
2695, Imhof Knoll
1441, Sanae Canyon

-   New feature coordinates
(Points, lines, polygons)

-   Feature in SCUFN
(Points, lines, polygons)
- Feature in CGA (only points)



Grid: ETOPO2; Isolines: AWI-BCWS sheets 553 & 554



Grid: ETOPO2; Isolines: AWI-BCWS sheet 554

Feature Name: Baeyer
 Generic Term: Canyon
 B-8 Feature Key: 2750
 Reason: Improper position of CGA feature #747 –
 GBC: Accredited by: SCUFN (Jun. 1997).

Proposal to SCUFN:

New positions in SCUFN and CGA – GBC: As line feature:

69°31' S, 0°30' E |
 69°25' S, 0°20' E |
 69°01' S, 0°10' E |
 68°52' S, 0°35' E

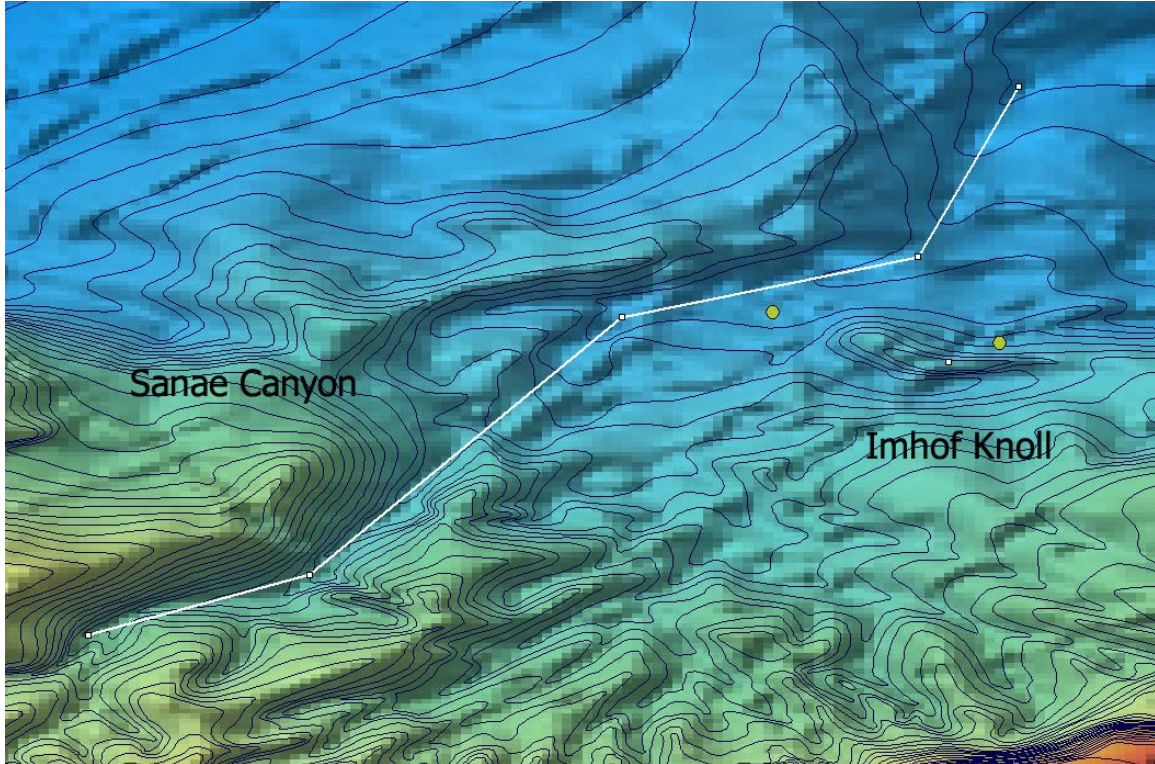
← actual position in SCUFN

Feature Name: Fimbul
 Generic Term: Canyon
 B-8 Feature Key: 2689
 Reason: Improper position of CGA feature #4596 –
 GBC: Accredited by: SCUFN (Jun. 1997)

Proposal to SCUFN:

New position in SCUFN and CGA – GBC: As line feature:

69°43' S, 1°38' E |
 69°39' S, 1°22' E |
 69°27' S, 1°02' E |
 69°06' S, 1°10' E



Grid: ETOPO2; Isolines: AWI-BCWS sheet 553

Feature Name: Imhof
 Generic Term: Knoll
 B-8 Feature Key: 2695
 Reason: Improper position of CGA feature #6866 –
 GBC: Accredited by: SCUFN (Jun. 1997).

Proposal to SCUFN:

New position in SCUFN and CGA - GBC: As point feature:
 68°40' S, 2°10' W

Feature Name: Sanae
 Generic Term: Canyon
 B-8 Feature Key: 1441
 Reason: Geometric description as line recommended
 Comment: Change position of CGA feature #12679 – GBC: (--).

Proposal to SCUFN:

New position in SCUFN and CGA - GBC: As line feature:
 69°34' S, 5°01' W |
 69°22' S, 4°17' W |
 68°31' S, 3°15' W |
 68°19' S, 2°16' W |
 67°45' S, 1°56' W

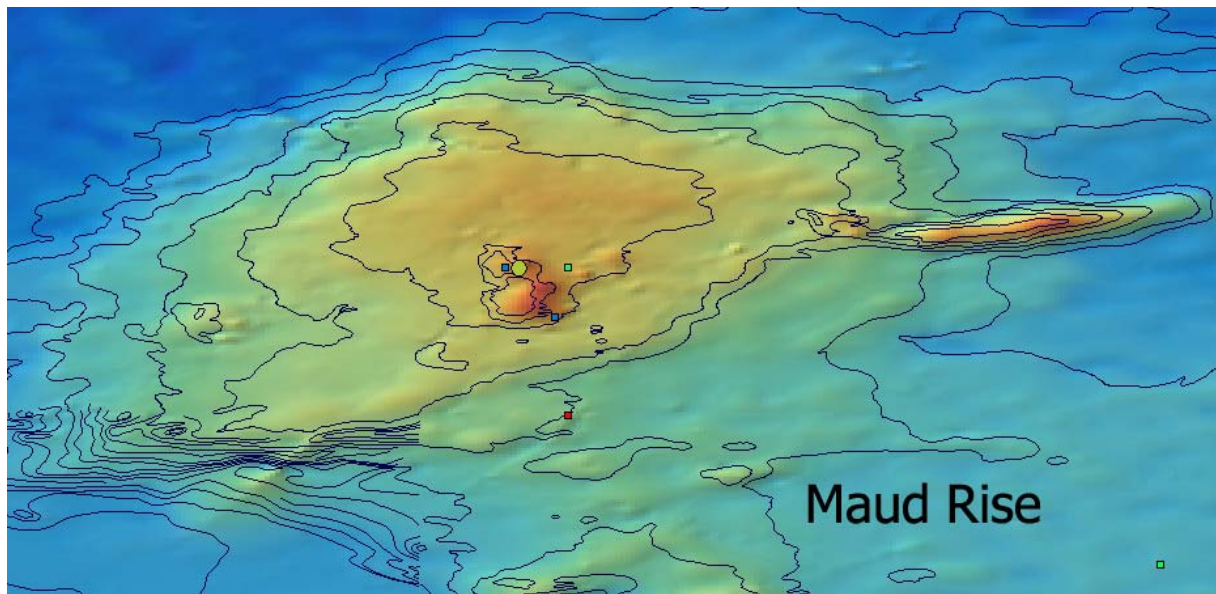
Ralf Krocke
Van-Ronzelen-Straße 2
27568 Bremerhaven - Germany



Bremerhaven, March 2008

Proposal (15) for changes in SCUFN

Features handled in this proposal:
986, Maud Rise



Grid: ETOPO2; Isolines: GEBCO

Actual Situation:

Maud Rise:

Yellow circle: GEBCO feature #986 and CGA feature #9165 –
GBC (–)

Red dot: CGA feature #9165 –
USA: approved 6/87 (ACUF 225)

Maud Seamount:

Blue dots: CGA feature #16721 –
RUS: (–)

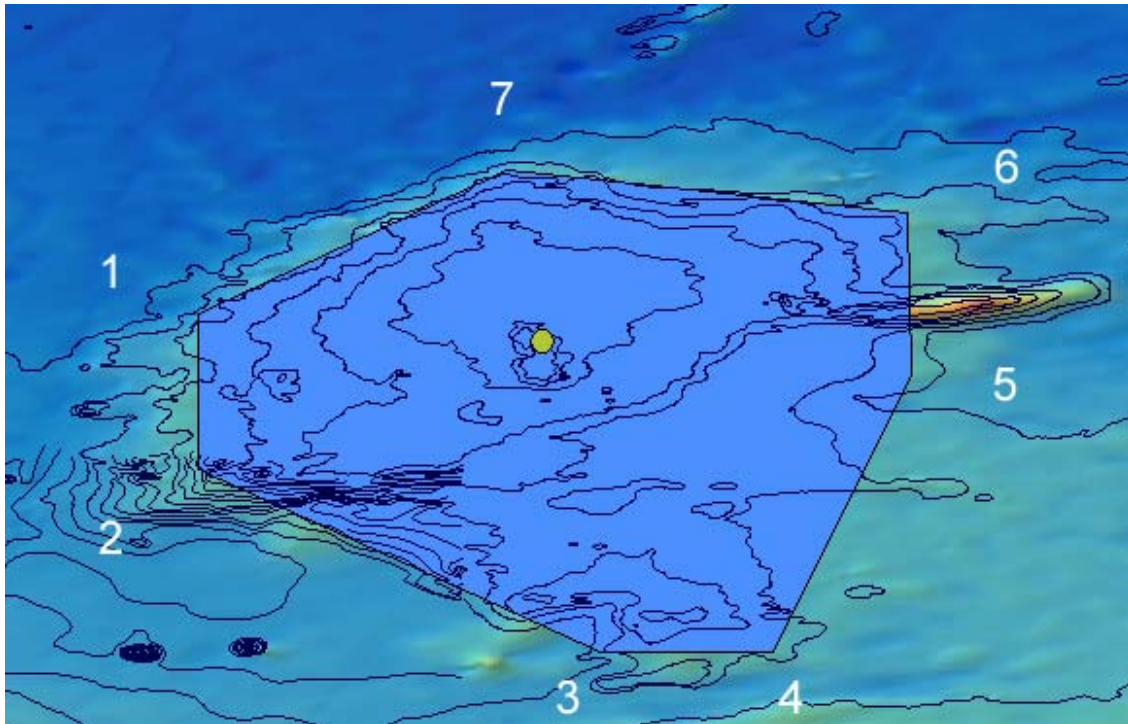
USA: A seamount name approved 2/64 (ACUF 23)

Maud Bank:

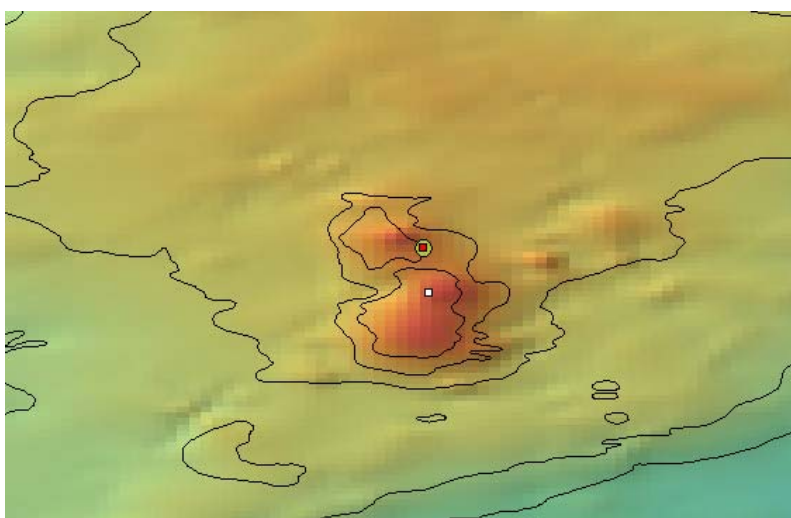
Green dot: CGA feature #9164 –
NOR: (Maudbanken)
RUS: (–)

Proposal:

Description of two features:



Maud Rise



Maud Hill

1st feature: **“Maud Rise”** (blue closed polygon)

Geometric description as closed polygon:

New positions:

1. 64°47' S, 0°11' W |
2. 66°04' S, 0°11' W |
3. 67°34' S, 3°09' E |
4. 67°34' S, 4°34' E |
5. 65°16' S, 5°43' E |
6. 63°57' S, 5°41' E |
7. 63°35' S, 2°22' E |
8. 64°47' S, 0°11' W

← list 1st position twice to indicate a closed polygon

2nd feature: Elevation with its base on top Maud Rise: **“Maud Hill”**(white dot)

New position: 65°08' S, 2°41' E

Proposal to SCUFN:

Adopt above mentioned positions (polygon coordinates) for feature 986 – Maud Rise.

Add new feature ‘Maud Hill’ with above mentioned coordinates.

Proposal to CGA:

Change of CGA feature **#9165 – GBC, USA:**

- Change positions to the above mentioned polygon.
(Retain name and generic term: “Maud Rise”).

Changes of CGA feature **#9164 – NOR, RUS:**

- Change generic term from ‘Bank’ to ‘Rise’,
 - Change feature key to #9165 (Maud Rise - see above)
- ⇒ CGA feature ID #9164 can be deleted (only two feature IDs are necessary)

Changes of CGA feature **#16721 – RUS, USA:**

- Change generic term from “Seamount” to “Hill”.
 - Change position to the above mentioned coordinates.
 - If feature will be added in SCUFN (see “*Conclusions for SCUFN*”), it has to be added in CGA – GBC as well.
-