

GEBCO SUB-COMMITTEE ON UNDERSEA FEATURE NAMES (SCUFN)
21st Meeting, Jeju Island, Rep of Korea, 19-22 May 2008

Comparison between the GEBCO Gazetteer and the SCAR Composite Gazetteer on
Antarctica (CGA) – Proposals for changes to the GEBCO Gazetteer (Part 2)

Ralf Krocke
Van-Ronzelen-Straße 2
27568 Bremerhaven - Germany





Bremerhaven, March 2008

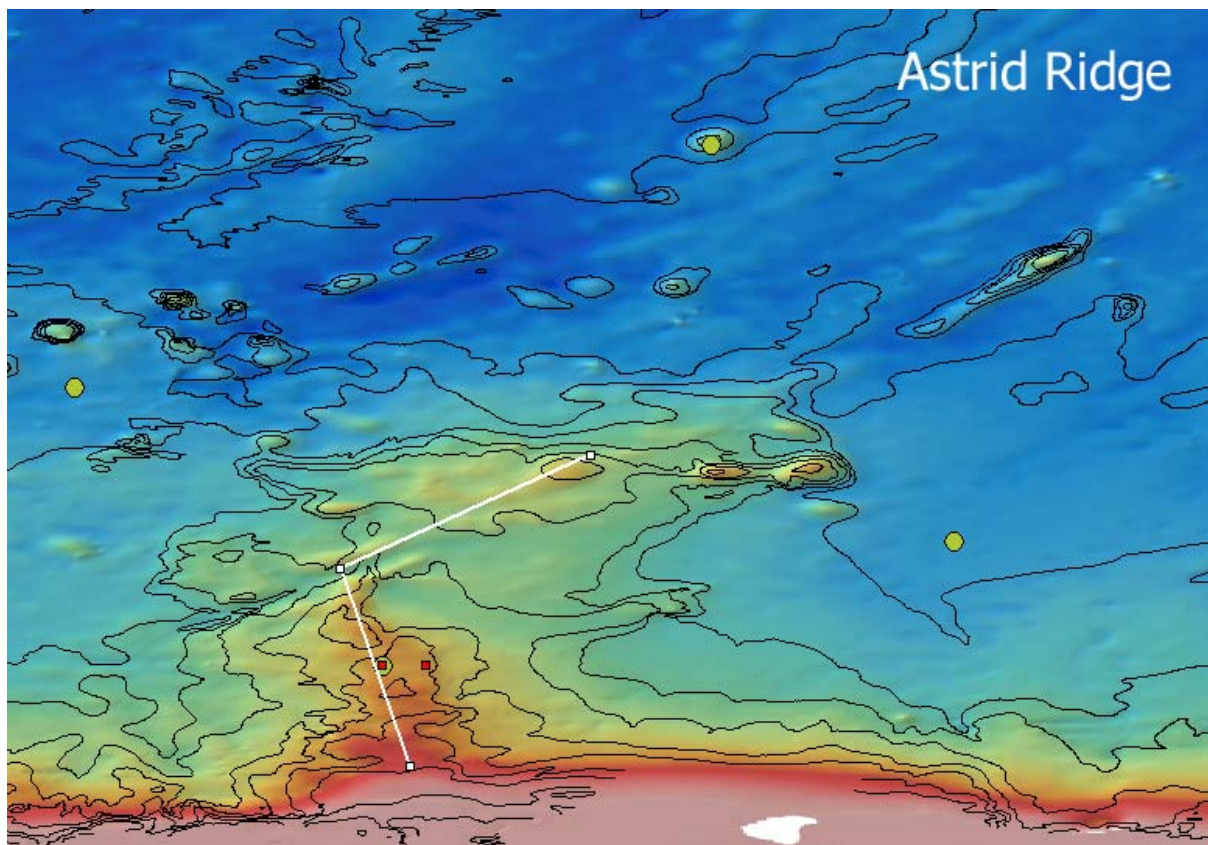
Proposal (16) for changes in SCUFN

Features handled in this proposal:

112, Astrid Ridge
501, Enderby Abyssal Plain
663, Gunnerus Bank
664, Gunnerus Ridge
804; Kainan Maru Seamounts

-  New feature coordinates
(Points, lines, polygons)

-  Feature in SCUFN
(Points, lines, polygons)
- Feature in CGA (only points)



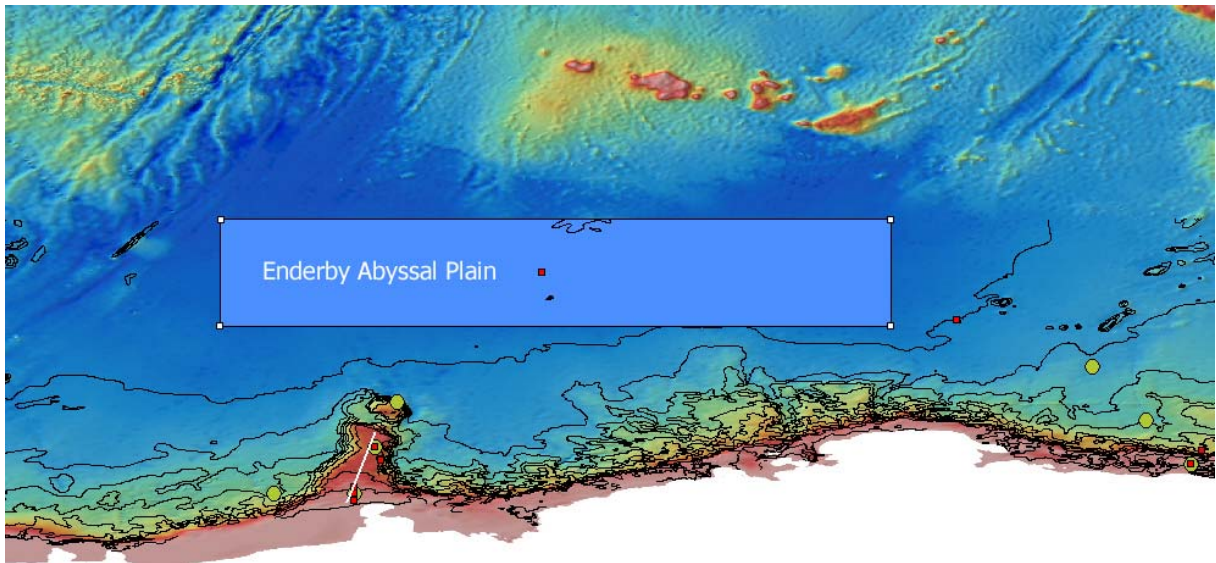
Grid: ETOPO2; Isolines: GEBCO

Feature Name: Astrid
 Generic Term: Ridge
 B-8 Feature Key: 112
 Reason: Adjust position of CGA feature #581 –
 GBC: --
 USA: approved 6/87 (ACUF 225)
 Geometric description as line recommended.
 Actual positions: USA 68°00'S 12°00'E
 GBC 68°00'S 11°30'E

Proposal to SCUFN:

New positions in SCUFN and CGA – GBC, USA: As line feature:
 69°07'S, 11°48'E |

66°53'S, 11°01'E |
65°35'S, 13°51'E



Feature Name: Enderby
Generic Term: Abyssal Plain
B-8 Feature Key: 501
Reason: Adjust generic term of CGA feature #4252 –
GBC: --
USA: Name approved 6/88 (ACUF 228)
Actual generic term 'Plain' is not valid in B-6
and should be changed to 'Abyssal Plain'

Geometric description as closed polygon recommended.

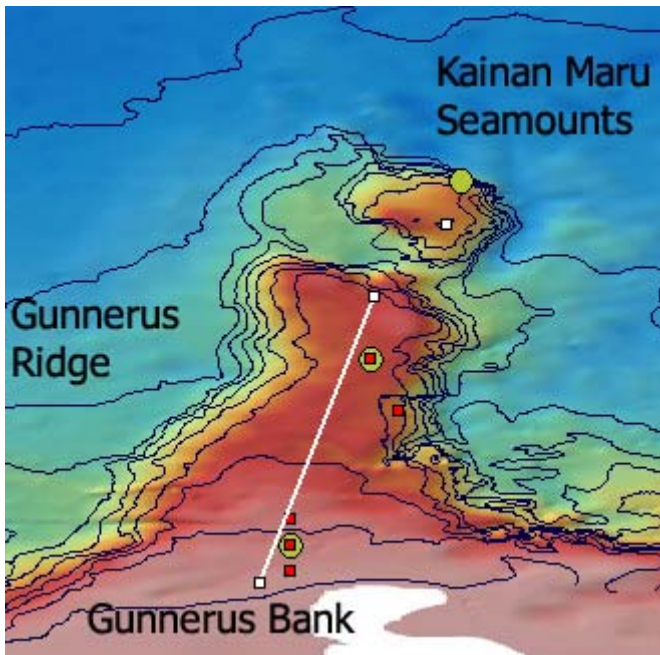
Actual positions: CGA – GBC, USA:
60°00' S, 40°00' E
SCUFN:
55°00' S, 29°00' E |
60°00' S, 40°00' E |
63°00' S, 55°00' E

Proposal to SCUFN:

New positions in SCUFN and CGA – GBC, USA: As closed polygon:
58°00' S, 28°00' E |
58°00' S, 53°00' E |

62°00' S, 53°00' E |
62°00' S, 28°00' E |
58°00' S, 28°00' E

← list 1st position twice to indicate a closed polygon



Grid: ETOPO2; Isolines: GEBCO

Feature Name: Gunnerus
Generic Term: Ridge
B-8 Feature Key: 664
Reason: Geometric description as line recommended.
(up to now: only one position: 66°30'S, 33°45'E)

Change also positions of CGA feature #5793 –
GBC: --
USA: Approved 6/88 (ACUF 228)

Proposal to SCUFN:

New positions in SCUFN and CGA – GBC, USA: As line feature:

68°34' S, 32°42' E |
65°57' S, 33°46' E

Feature Name : Gunnerus
Generic Term: Bank
B-8 Feature Key: 663
Reason: Adjust positions of CGA feature #5792 –

GBC: --
NOR: (Gunnerusbanken)
RUS: (Gunnerusbanken)
USA: reaffirmed 7/64 (ACUF 30)
Actual positions: NOR 68°30'S 33°00'E
RUS 67°00'S 34°00'E
USA 68°00'S 33°00'E
GBC 68°15'S 33°00'E
Comment: GEBCO position could retain as the centered location.

Proposal to CGA:

New position in CGA – NOR, RUS, USA: Adopt from GBC:
68°15'S, 33°00'E

Feature Name : Kainan Maru
Generic Term: Seamounts
B-8 Feature Key: 804
Reason: Position and/or generic term conspicuous.
Actual position: 64°50'S, 34°35'E
Comment: Change also position of CGA feature #7305

Proposal to SCUFN:

New position in SCUFN and CGA – GBC at the highest elevation:
65°14' S, 34°26' E

Ralf Krocker
Van-Ronzelen-Straße 2
27568 Bremerhaven - Germany







Bremerhaven, March 2008

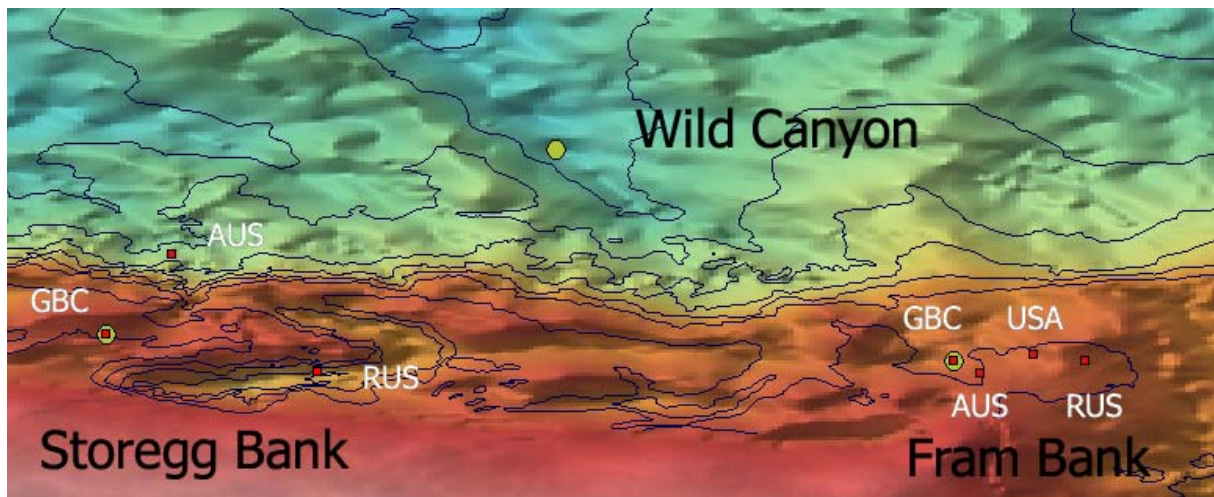
Proposal (17) for changes in SCUFN

Features handled in this proposal:

566, Fram Bank
1612, Storegg Bank
1805, Wild Canyon

-   New feature coordinates
(Points, lines, polygons)

-   Feature in SCUFN
(Points, lines, polygons)
- Feature in CGA (only points)



Grid: ETOPO2; Isolines: GEBCO

Feature Name: Fram
 Generic Term: Bank
 B-8 Feature Key: 566
 Reason: Adjust position of CGA feature #4892 –
 AUS: --
 GBC: --
 RUS: --
 USA: Name of bank reaffirmed 7/64 (ACUF 30)

Actual positions:

AUS	67°25'S	69°40'E
GBC	67°20'S	69°30'E
RUS	67°20'S	70°20'E
USA	67°18'S	70°00'E

Proposal to SCUFN:

New position in SCUFN and CGA – AUS, GBC, USA: Adopt from RUS:
 67°20'S, 70°20'E

Feature Name: Storegg
 Generic Term: Bank
 B-8 Feature Key: 1612
 Reason: Adjust generic term and position of CGA feature #14081 –
 AUS: --
 GBC: --
 RUS: -- **Actually no generic term is associated**

Actual positions:

AUS	66°40'S	64°35'E
RUS	67°24'S	65°30'E
GBC	67°10'S	64°10'E

Proposal to CGA:

New position in CGA – AUS, RUS: Adopt from GBC:
67°10'S, 64°10'E

Feature Name: Wild
Generic Term: Canyon
B-8 Feature Key: 1805
Reason: Geometric description as line recommended.
Comment: Change also position of CGA feature #16034 – GBC: (--)

Proposal to SCUFN:

New positions in SCUFN and CGA – GBC:

(Available datasets unsuitable to detect significant structures
and define coordinates)

Ralf Krocke
Van-Ronzelen-Straße 2
27568 Bremerhaven - Germany







Bremerhaven, March 2008

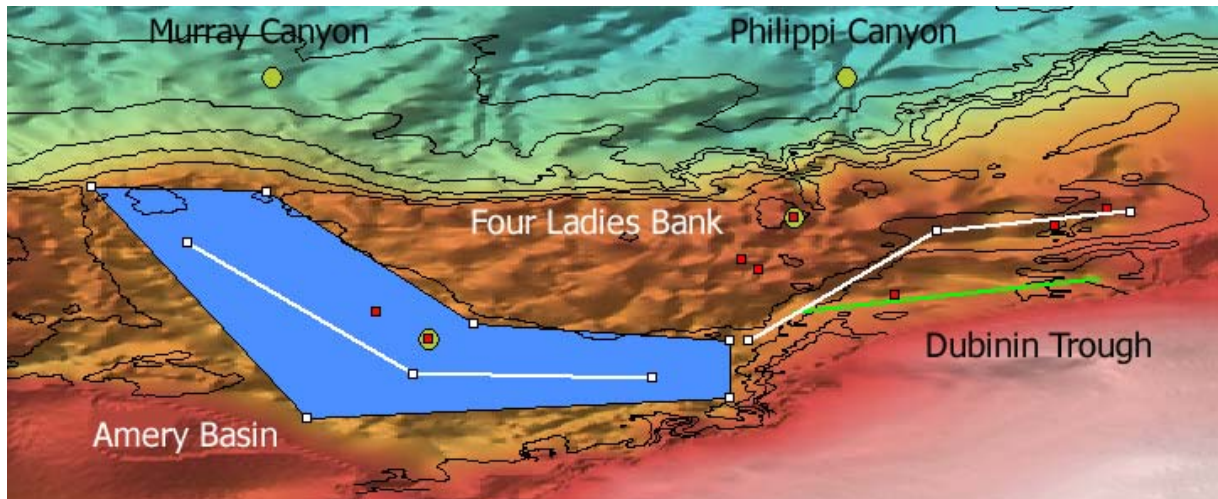
Proposal (18) for changes in SCUFN

Features handled in this proposal:

59, Amery Basin
454, Dubinin Trough
564, Four Ladies Bank

-   New feature coordinates
(Points, lines, polygons)

-   Feature in SCUFN
(Points, lines, polygons)
- Feature in CGA (only points)



Grid: ETOPO2; Isolines: GEBCO

Feature Name: Amery
 Generic Term: Basin
 B-8 Feature Key: 59
 Reason: Adjust generic term and position of CGA feature #294 –
 AUS: -- Feature is named 'Amery Depression'
 GBC: --
 USA: Name approved 6/88 (ACUF 228)
 Geometric description as line recommended.

Actual positions:

AUS	68°00'S	74°00'E
USA	68°15'S	74°30'E
GBC	68°15'S	74°30'E

**Proposal to SCUFN:
New positions in SCUFN and CGA – AUS, GBC, USA:**

Proposal 1: Definition as closed polygon:

66°48' S, 71°16' E |
 66°50' S, 72°56' E |
 68°06' S, 74°56' E |
 68°16' S, 77°23' E |
 68°49' S, 77°23' E |
 69°01' S, 73°20' E |
 66°48' S, 71°16' E

← list 1st position twice to indicate a closed polygon

Proposal 2: Alternative definition as line:

68°37' S, 76°38' E |
 68°34' S, 74°20' E |
 67°20' S, 72°11' E

Proposal to CGA – AUS: Change generic term 'depression' to 'basin'.

Feature Name: Dubinin
Generic Term: Trough
B-8 Feature Key: 454
Reason: Adjust position of CGA feature #3911 –
GBC: --
RUS: -- Name 'Dubininga' correct?
USA: Name approved 8/85 (ACUF 218)
Geometric description as line recommended.
Actual position: RUS 67°00'S 81°00'E
USA 67°10'S 80°30'E
GBC 67°50'S 78°58'E

Proposal to SCUFN:

New positions in SCUFN and CGA – GBC, RUS, USA: As line feature:
67°01' S, 81°13' E |
67°13' S, 79°21' E |
68°16' S, 77°34' E

Feature Name: Four Ladies
Generic Term: Bank
B-8 Feature Key: 564
Reason: Adjust position of CGA feature #4869 –
AUS: --
GBC: --
RUS: --
USA: Name of bank reaffirmed 7/64 (ACUF 30)
Actual position: AUS 67°30'S 77°30'E
GBC 67°05'S 78°00'E
RUS 67°35'S 77°40'E
USA 67°30'S 77°30'E

Proposal to SCUFN:

New positions in SCUFN and CGA – GBC, RUS: Adopt from AUS, USA:
67°30'S, 77°30'E

Ralf Krocke
Van-Ronzelen-Straße 2
27568 Bremerhaven - Germany



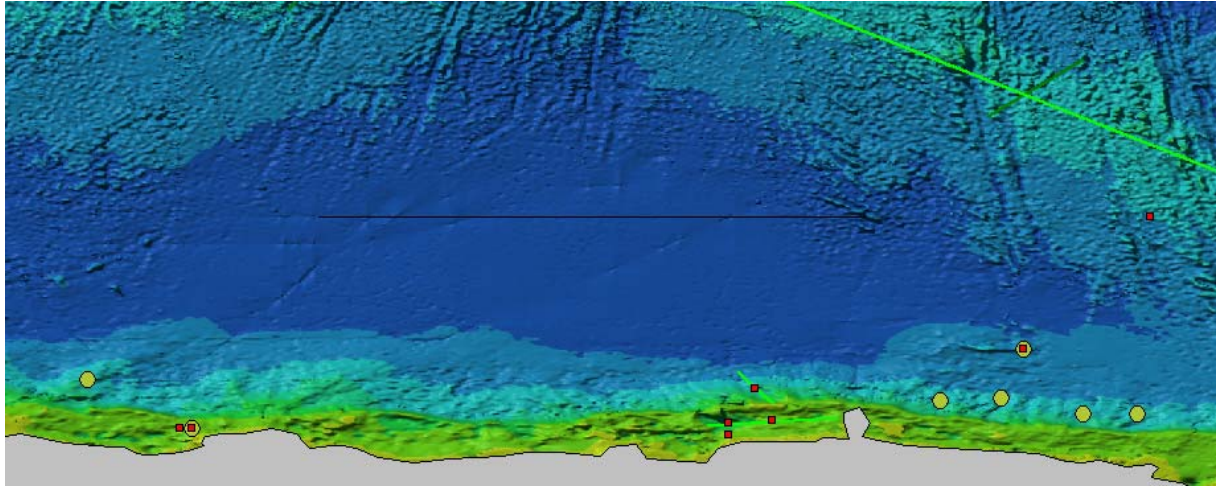
Bremerhaven, March 2008

Proposal (19) for changes in SCUFN

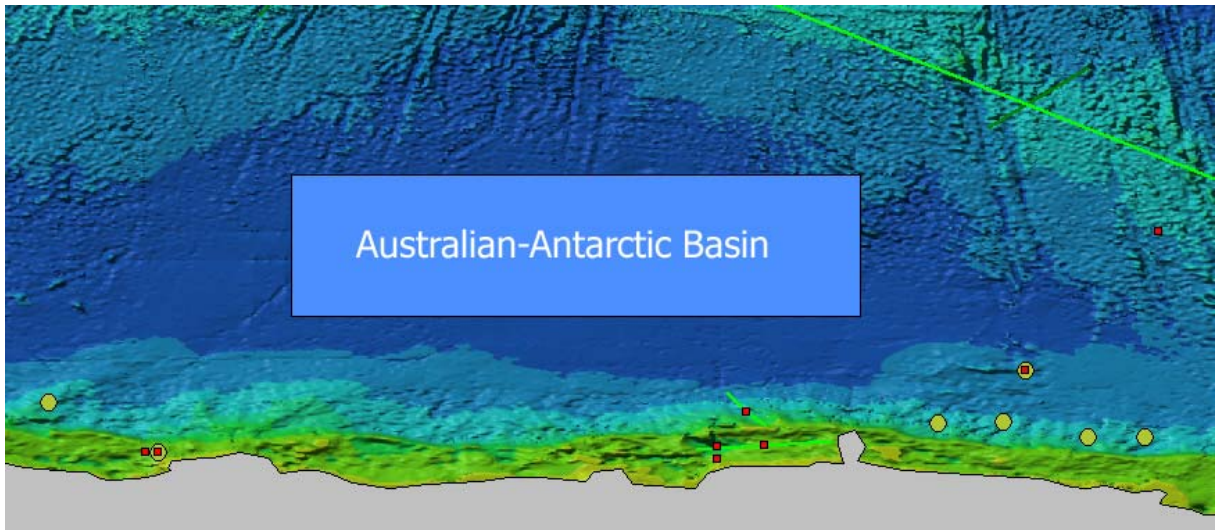
Features handled in this proposal:
123, Australian-Antarctic Basin
1285, Petersen Bank

- ✎ ■ New feature coordinates
(Points, lines, polygons)

- ✎ ■ Feature in SCUFN
(Points, lines, polygons)
- Feature in CGA (only points)



Grid: ETOPO2



Grid: ETOPO2

Feature Name:	Australian-Antarctic
Generic Term:	Basin
B-8 Feature Key:	123
Reason:	Improper generic term: Size and morphology of the feature recommends description as 'Abyssal Plain'.
	Improper positions in SCUFN: No difference in latitude coordinate.
Actual positions:	58°00' S, 115°00' E

58°00' S, 135°00' E

Proposal to SCUFN:

New position in SCUFN: As closed polygon:

56°00' S, 115°00' E |
61°00' S, 115°00' E |
61°00' S, 135°00' E |
56°00' S, 135°00' E |
56°00' S, 115°00' E

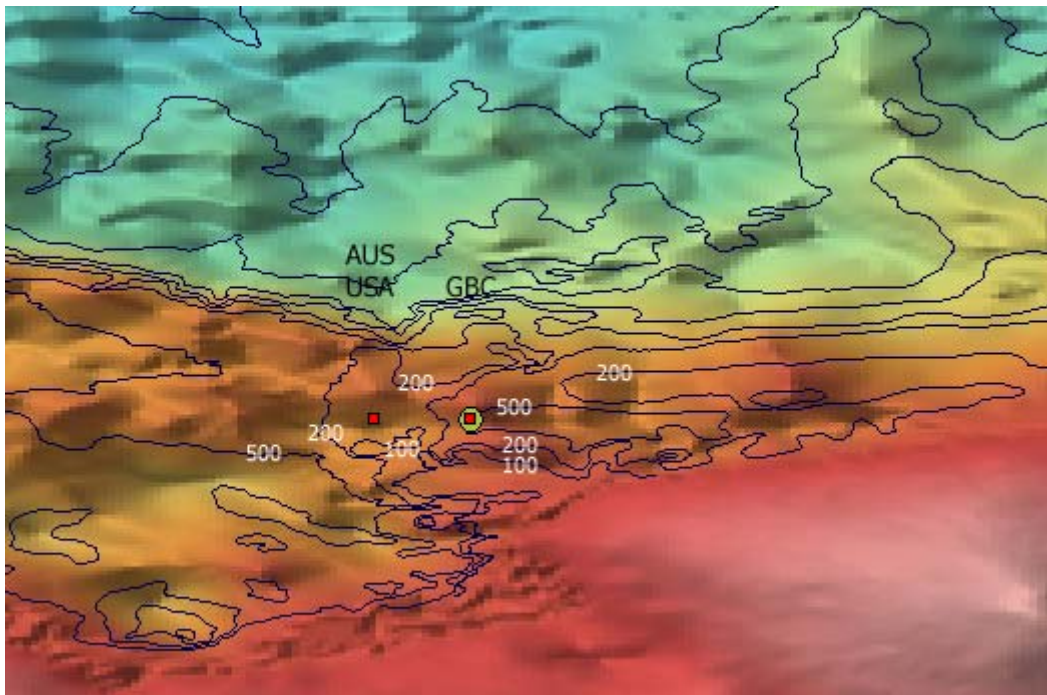
← list 1st position twice to indicate a closed polygon

Proposal to SCUFN:

Change generic term from 'Basin' to 'Abyssal Plain'.

Proposal to CGA:

Feature is not registered in CGA and should be adopted from SCUFN.



Grid: ETOPO2; Isolines: GEBCO

Feature Name: Petersen
Generic Term: Bank
B-8 Feature Key: 1285
Reason: Adjust position of CGA feature #11156 – AUS, GBC, USA
Actual positions: AUS 65°45'S 109°55'E
USA 65°45'S 109°55'E
GBC 65°45'S 110°20'E

Comment: Position given by AUS, USA (65°45'S, 109°55'E) is located on higher elevation than the one given by GBC.

Proposal to SCUFN:

New position in SCUFN and CGA - GBC: Adopt from AUS, USA:
65°45', 109°55'E

It is proposed to check original data because the position determination is difficult from ETOPO2 / GDA


Ralf Krocke
Van-Ronzelen-Straße 2
27568 Bremerhaven - Germany




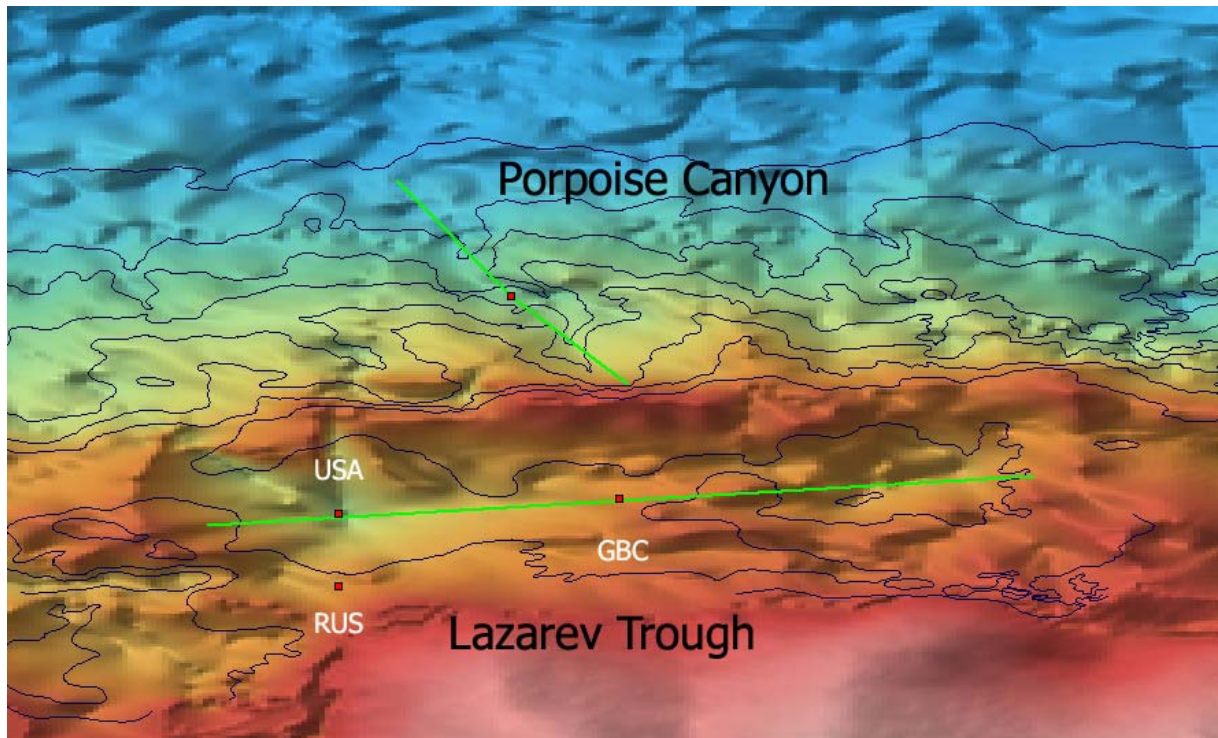
Bremerhaven, March 2008

Proposal (20) for changes in SCUFN

Features handled in this proposal:
886, Lazarev Trough

-  ■ New feature coordinates
(Points, lines, polygons)

-  ■ Feature in SCUFN
(Points, lines, polygons)
- ■ Feature in CGA (only points)



Grid: ETOPO2; Isolines: GEBCO

Feature Name: Lazarev
 Generic Term: Trough
 B-8 Feature Key: 886
 Reason: Adjust position of CGA feature #8236 –
 GBC: 04/1987
 RUS: (named “Lazareva, zhëlob (podvodnyj)”)
 USA: Name approved 8/85 (ACUF 218)
 CGA positions:

RUS	66°00'S	130°00'E
USA	65°35'S	130°00'E
GBC	65°30'S	131°37'E

Proposal to CGA:

New positions in CGA – RUS, USA: Adopt from SCUFN:
 65°39' S, 129°15' E |
 65°22' S, 134°00' E

Ralf Krocker
Van-Ronzelen-Straße 2
27568 Bremerhaven - Germany

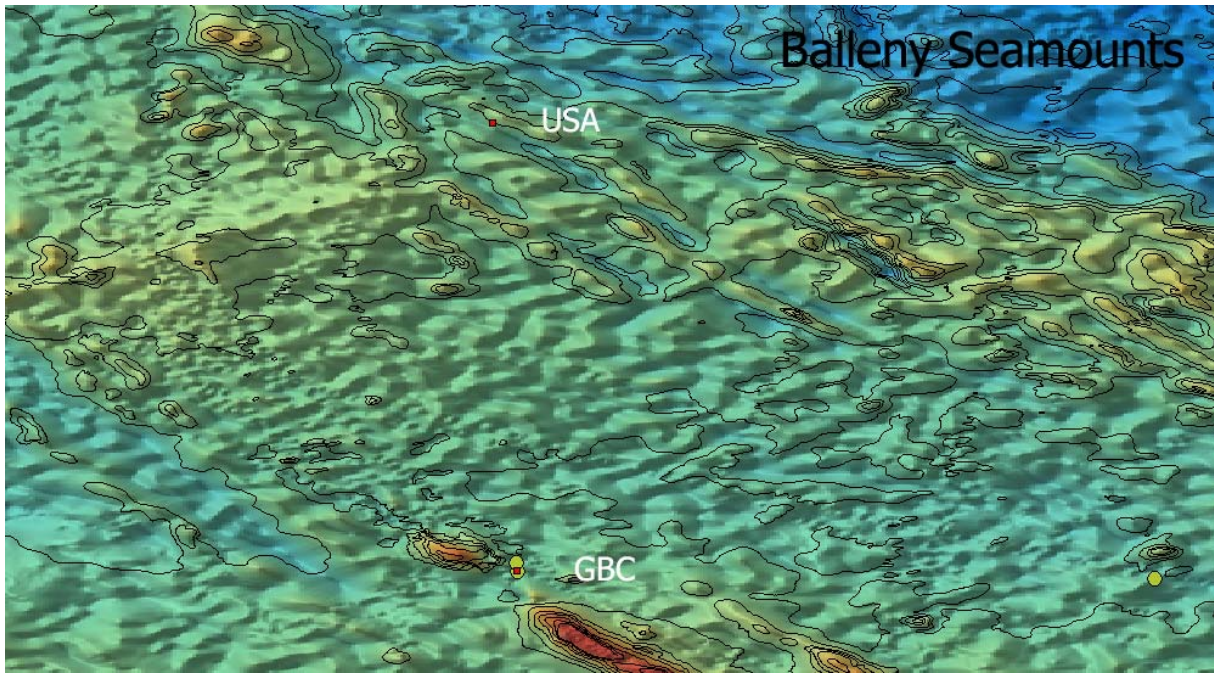


Bremerhaven, March 2008


Proposal (21) for changes in SCUFN


Features handled in this proposal:

140, Balleny Seamounts
2559, Ellsworth Bank
1365, Rennick Trough
1672, Terra Nova Canyon



Grid: ETOPO2; Isolines: GEBCO

-  New feature coordinates
(Points, lines, polygons)

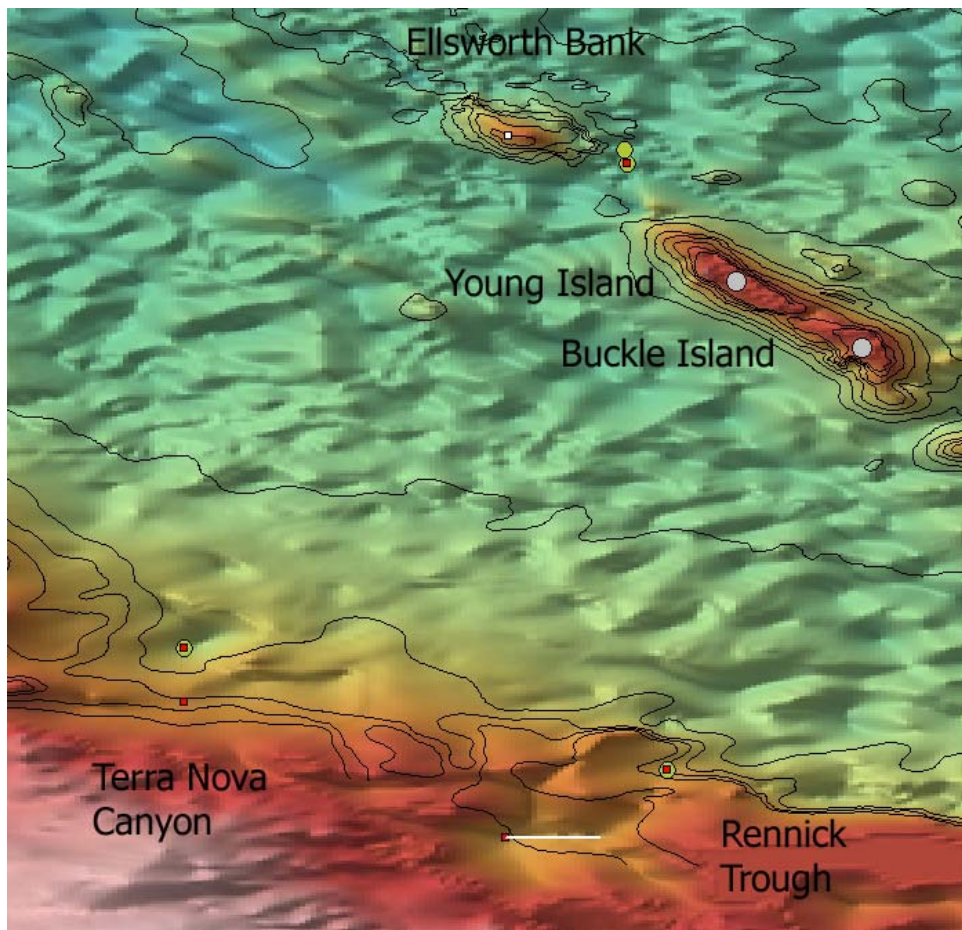
-  Feature in SCUFN
(Points, lines, polygons)
- Feature in CGA (only points)
- Island

Feature Name: Balleny
 Generic Term: Seamounts
 B-8 Feature Key: 140
 Reason: Adjust position of CGA feature #844 –
 GBC: Accredited by: SCUFN (May 1995)
 USA: Name approved 6/88 (ACUF 228).
 Positions differ by ~281 sm

Actual position: GBC: **65°40'S** **161°45'E**
 USA: **61°00'S** **161°30'E**

Proposal to SCUFN:
New position in SCUFN and CGA - GBC: Adopt from USA:
 61°00'S, 161°30'E

Check proposer of the feature



Grid: ETOPO2; Isolines: GEBCO

Feature Name: Ellsworth
 Generic Term: Bank
 B-8 Feature Key: 2559
 Reason: Improper position of CGA feature #4203 –
 GBC: Accredited by: SCUFN (May 1995)

Proposal to SCUFN:

New positions in SCUFN and CGA – GBC: As point feature:
 65°30' S, 161°01' E

Feature Name: Rennick
 Generic Term: Trough
 B-8 Feature Key: 1365
 Reason: Adjust position and generic term of CGA feature #12049 –
 GBC: --
 NZL: (15/05/2006)

The actual generic term 'basin' differ from the term 'trough' used by SCUFN

Geometric description as line recommended.

Actual position: NZL 69°50'S 161°00'E
 GBC 69°25'S 162°00'E

Proposal to SCUFN:

New positions in SCUFN and CGA – GBC, NZL: As line feature:

69°50' S, 161°00' E |

69°50' S, 161°35' E

Proposal to CGA – NZL: Change generic term 'basin' to 'trough'.

Feature Name: Terra Nova
Generic Term: Canyon
B-8 Feature Key: 1672
Reason: Adjust positions of CGA feature #14555 –
GBC: --
USA: Name approved 6/88 (ACUF 228)
Geometric description as line recommended.
Actual position: USA 69°00'S 159°00'E
GBC 68°40'S 159°00'E
Comment: Positions given by USA and GBC may indicate begin and end of the canyon?

Proposal to SCUFN:

New position in SCUFN and CGA – GBC, USA:

(Actual datasets unsuitable to detect significant structures and define coordinates)

Ralf Krockner
Van-Ronzelen-Straße 2
27568 Bremerhaven - Germany



Bremerhaven, March 2008

Proposal (22) for changes in SCUFN

Features handled in this proposal

2558, Axthelm Seamount

2557, Glacier Rise

722, Hooker Basin

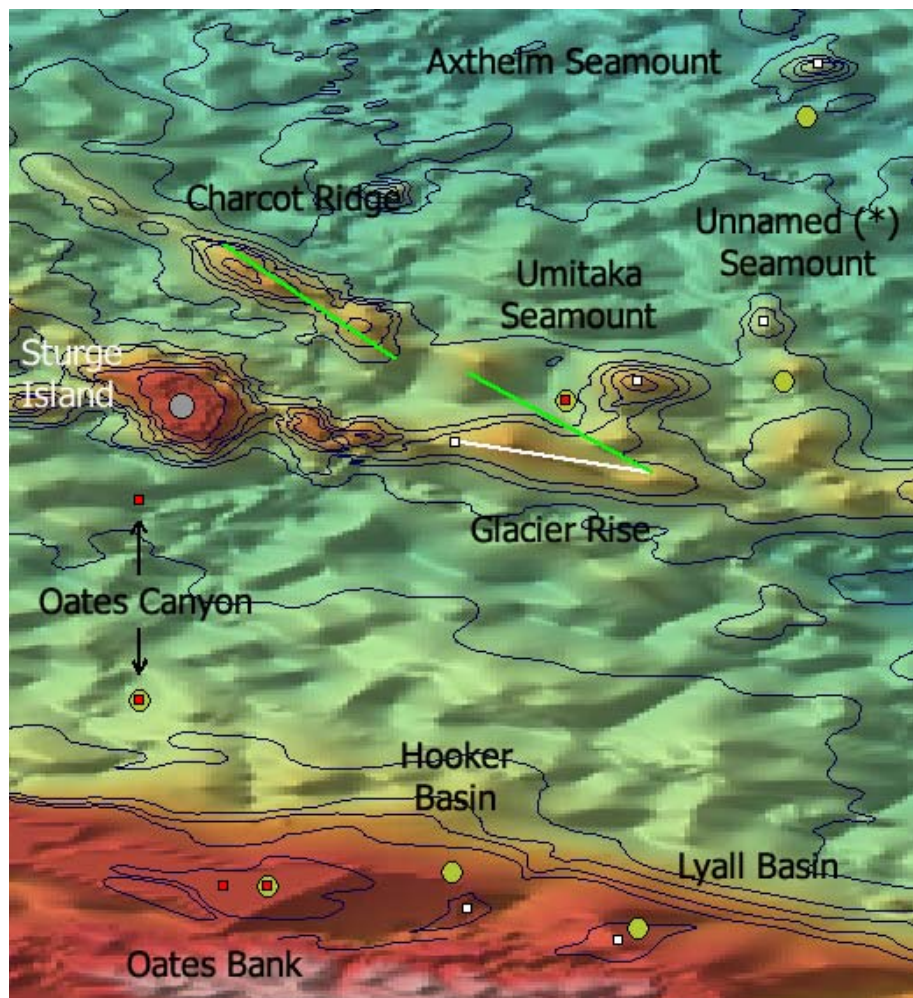
923, Lyall Basin

1192, Oates Bank

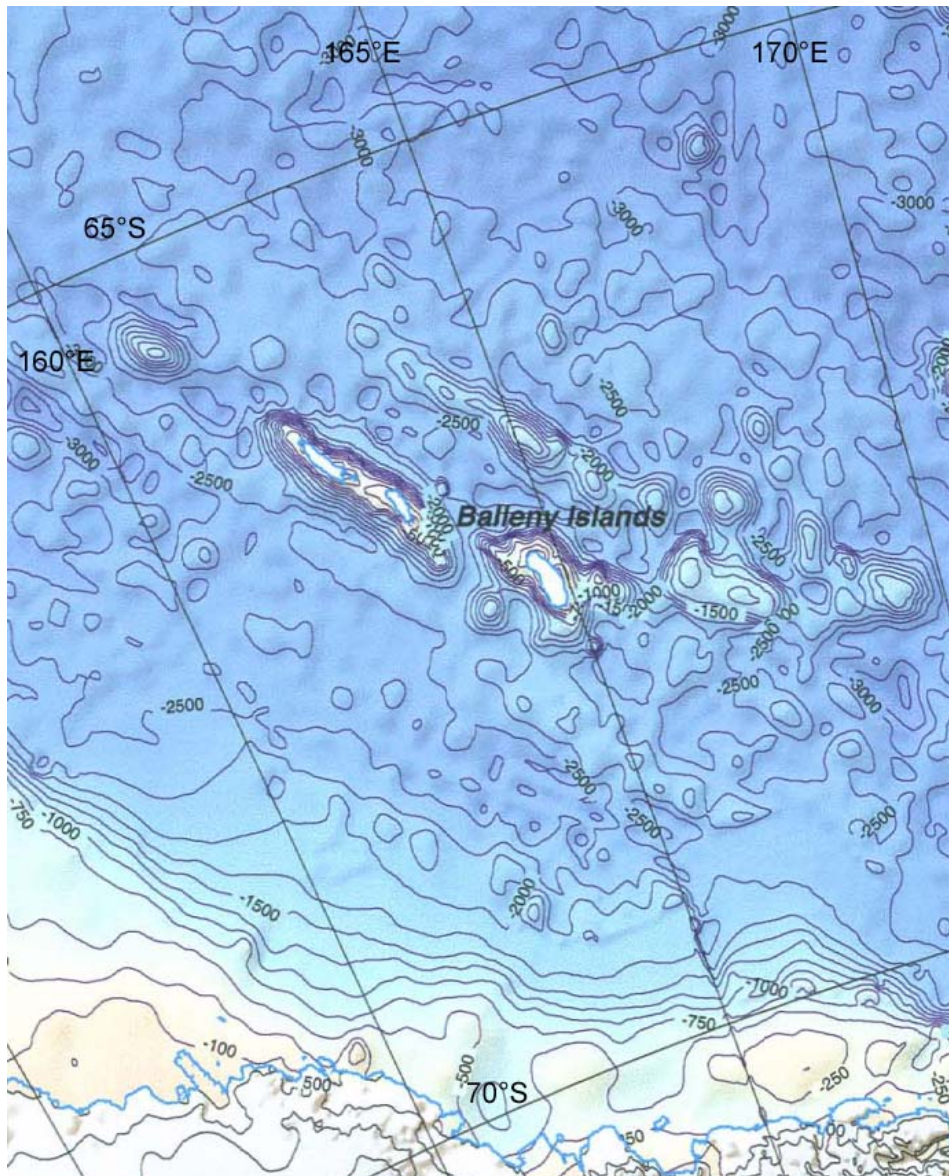
- ◻ ✍️ ■ New feature coordinates
(Points, lines, polygons)

- ◉ ✍️ ■ Feature in SCUFN
(Points, lines, polygons)
- ◻ Feature in CGA (only points)
- Island

1193, Oates Canyon
2560, Umitaka Seamount
3577, Unnamed (*) Seamount



Grid: ETOPO2, Isolines: GEBCO



Bathymetry of the Ross Dependency and Adjacent Southern Ocean, compiled by Vaughan Stagpool, Institute of Geological & Nuclear Sciences, NZL

Feature Name: Axthelm
 Generic Term: Seamount
 B-8 Feature Key: 2558
 Reason: Improper position of CGA feature #708
 GBC: Accredited by: SCUFN (May 1995)

Proposal to SCUFN:

New position in SCUFN and CGA - GBC: As point feature:
 65°27' S, 168°28' E

Feature Name: Glacier

Generic Term: Rise
B-8 Feature Key: 2557
Reason: If actual geometric description is a line, it does not fit with the morphology. (Actual positions seem not indicate upper left and lower right corner of a polygon).
⇒ Change positions of CGA feature #5361 –
GBC: Accredited by: SCUFN (May 1995)
⇒ Possibly inadequate generic term 'Rise'.

Proposal to SCUFN:

New positions in SCUFN and CGA - GBC: As line feature:
67°39' S, 166°21' E |
67°50' S, 167°30' E ← existing position in SCUFN

Feature Name: Hooker
Generic Term: Basin
B-8 Feature Key: 722
Reason: Possibly improper position of CGA feature #6570 – GBC (--)

Proposal to SCUFN:

New position in SCUFN and CGA - GBC: As point feature:
70°23' S, 166°25' E

Feature Name: Lyall
Generic Term: Basin
B-8 Feature Key: 923
Reason: Possibly improper position of CGA feature #8745 – GBC (--)

Proposal to SCUFN:

New position in SCUFN and CGA - GBC: As point feature:
70°34' S, 167°18' E

Feature Name: Oates
Generic Term: Bank
B-8 Feature Key: 1192
Reason: Adjust position of CGA feature #10493 –
GBC: --
USA: Name approved 9/97 (ACUF 272)

Proposal to SCUFN:

New position in CGA – USA: Adopt from GBC:
70°15'S, 165°15' E

Feature Name: Oates
Generic Term: Canyon
B-8 Feature Key: 1193
Reason: Adjust position of CGA feature #10494 –
GBC: --
USA: Name approved 6/88 (ACUF 228)
Geometric description as line recommended.

Proposal to SCUFN:

New position in SCUFN and CGA - GBC:

(Actual datasets unsuitable to detect significant structures)

Feature Name: Umitaka
Generic Term: Seamount
B-8 Feature Key: 2560
Reason: Adjust generic term of CGA feature #15180 –
GBC: Accredited by: SCUFN (May 1995)
USA: Name approved 4/80 (ACUF 201)
The actual generic term 'bank' is inadequate
and should be change to 'seamount'
Improper localisation of the feature.

Proposal to SCUFN:

New position in SCUFN and CGA – GBC, USA: As point feature:
67°18' S, 167°25' E

Feature Name: Unnamed (*)
Generic Term: Seamount
B-8 Feature Key: 3577
Reason: Possibly improper position of the feature
AND/OR improper generic term
Change position AND/OR change generic term to 'hill'
Comment: Feature ist not listed in CGA.
Proposed in SCUFN: 04/2001

Proposal to SCUFN:

New position in SCUFN: As point feature:
70°34' S, 167°18' E

Ralf Krocker
Van-Ronzelen-Straße 2
27568 Bremerhaven - Germany

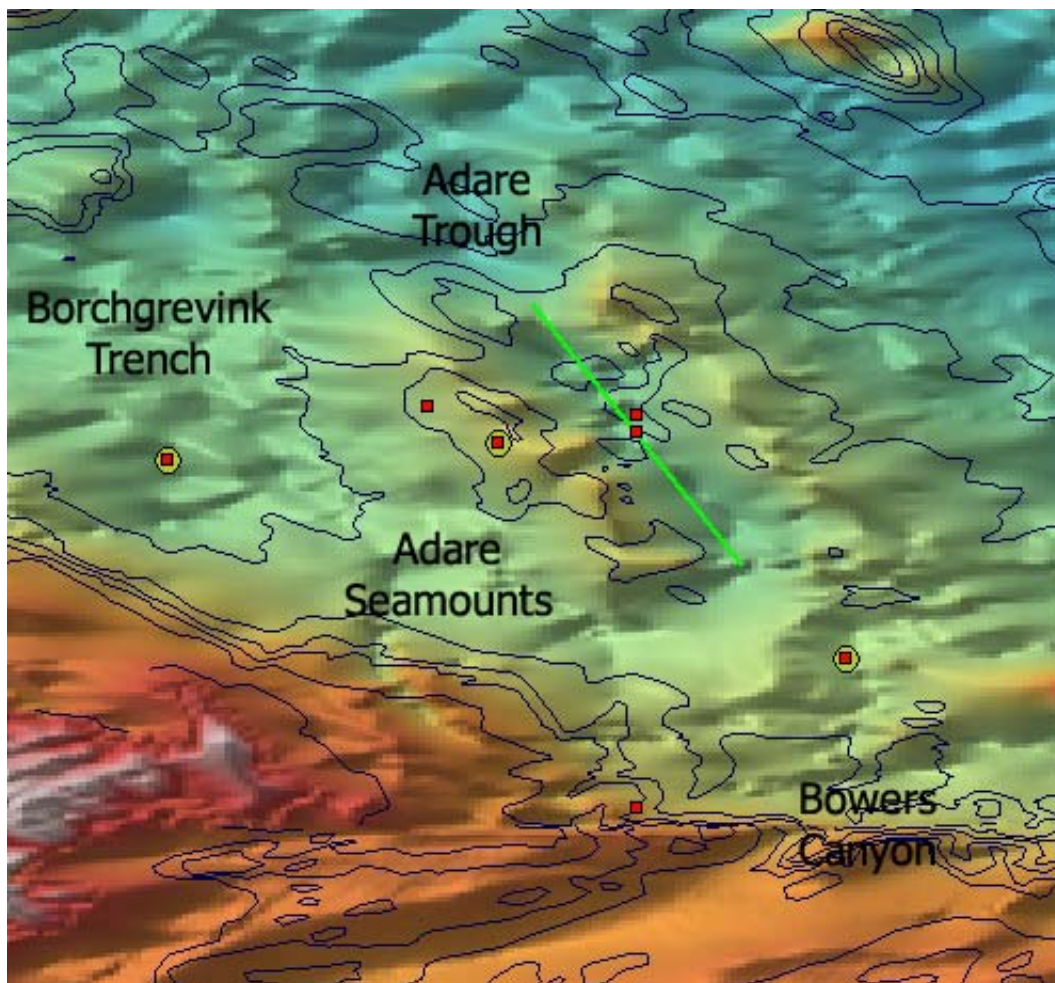


Bremerhaven, March 2008



Proposal (23) for changes in SCUFN



Features handled in this proposal

- 7, Adare Seamounts
- 2722, Adare Trough
- 1862, Borchgrevink Trench
- 203, Bowers Canyon

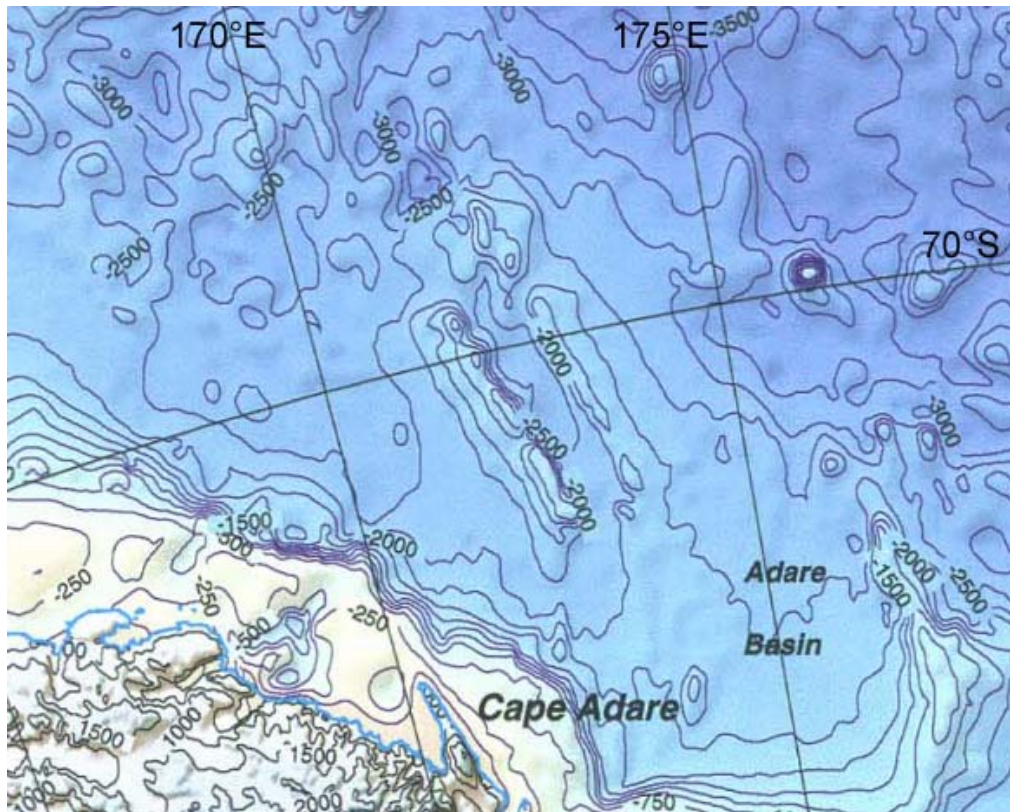


Grid: ETOPO2, Isolines: GEBCO

□   New feature coordinates
(Points, lines, polygons)

○   Feature in SCUFN
(Points, lines, polygons)

■ Feature in CGA (only points)



Bathymetry of the Ross Dependency and Adjacent Southern Ocean,
compiled by Vaughan Stagpool, Institute of Geological & Nuclear Sciences, NZL

Feature Name: Adare
Generic Term: Seamounts
B-8 Feature Key: 7
Reason: Adjust position of CGA feature #70 –
GBC: --
USA: Name approved 6/88 (ACUF 228)

Actual position: USA **70°00'S** **171°30'E**
GBC **70°10'S** **171°50'E**

Proposal to CGA:

New position in CGA - USA:

Adopt from SCUFN/GBC: 70°10'S, 171°50'E

Feature Name: Adare
Generic Term: Trough
B-8 Feature Key: 2722
Reason: Adjust position of CGA feature #71 –
GBC: Accredited by: SCUFN (Jun. 1997)
NZL: Accredited by: SCUFN (Jun. 1997)
USA: Name approved 9/97 (ACUF 272)
Geometric description as line recommended.
Actual position: NZL 70°07'S 172°30'E
USA 70°02'S 172°30'E
GBC 70°07'S 172°30'E

Proposal to CGA:

New position in CGA – GBC, NZL, USA: Adopt SCUFN positions:
69°30' S, 172°00' E |
70°45' S, 173°00' E

Feature Name: Borchgrevink
Generic Term: Trench
B-8 Feature Key: 1862
Reason: Adjust generic term of CGA feature #1599 –
GBC: Accredited by: SCGN (May 1989)
USA: approved 6/88 (ACUF 228)
The actual generic term 'canyon' is inadequate
and should be changed to 'trench'
Geometric description as line recommended.
Actual position: GBC: 70°15'S 170°15'E
USA: 70°15'S 170°15'E

Proposal to SCUFN:

Feature 'Borchgrevink Canyon' with feature key 192 should be deleted in B-8.

Proposal to CGA:

Change name in CGA – USA: Borchgrevink Trench

Feature Name: Bowers
Generic Term: Canyon
B-8 Feature Key: 203
Reason: Adjust positions of CGA feature #1682 –
GBC: --
USA: approved 4/80 (ACUF 201).
Geometric description as line recommended.

Actual positions: USA 71°55'S 172°30'E
GBC 71°12'S 173°30'E

Duplicate Feature Name in SCUFN with ID 2316:

Position of SCUFN feature 2316:

52°50'N, 179°25'W

Proposal to SCUFN: Check which feature is correct.

Proposal to SCUFN:

New position in SCUFN and CGA – GBC, USA:

(Actual datasets unsuitable to detect significant structures and define coordinates).

Ralf Krocker
Van-Ronzelen-Straße 2
27568 Bremerhaven - Germany

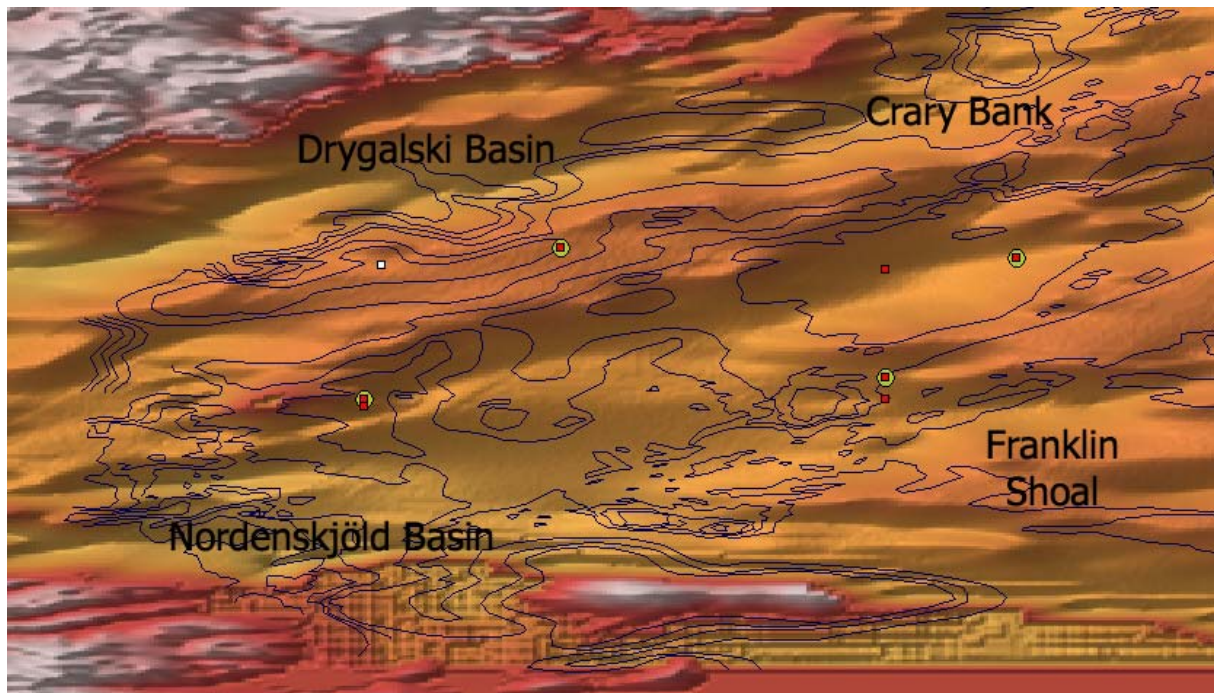


Bremerhaven, March 2008

Proposal (24) for changes in SCUFN

Features handled in this proposal:

- 367, Crary Bank
- 453, Drygalski Basin
- 568, Franklin Shoal
- 794, JOIDES Basin
- 1156, Nordenskjöld Basin



Grid: ETOPO2; Isolines: GEBCO

- ✂ ■ New feature coordinates
(Points, lines, polygons)

- ✂ ■ Feature in SCUFN
(Points, lines, polygons)
- Feature in CGA (only points)

Feature Name: Drygalski
Generic Term: Basin
B-8 Feature Key: 453
Reason: Possibly improper position of CGA feature feature #3899 –
GBC: Accredited by: SCGN (Apr. 1987)
USA: Name changed back to Drygalski Basin
6/2003 (ACUF 297)

Proposal to SCUFN:

New position in SCUFN and CGA – GBC, USA:

74°50' S, 166°30' E | ← actual position
74°58' S, 165°08' E | ← new center
75°14' S, 163°43' E

Feature Name: JOIDES
Generic Term: Basin
B-8 Feature Key: 794
Reason: Name of CGA feature #7200 is not adopted correctly from
GEBCO. It should be written in upper case because JOIDES is
the abbreviation for “Joint Oceanographic Institutions for Deep
Earth Sampling”

Proposal to CGA:

Change diction of feature name in CGA - GBC:

JOIDES Basin

Feature Name: Nordenskjöld
Generic Term: Basin
B-8 Feature Key: 1156
Reason: Adjust name and position of CGA feature #10347 –
GBC: --
USA: Name approved 4/80 (ACUF 201)

The actual name 'Nordenskjöld' of CGA feature #10347 –
GBC should be changed to 'Nordenskjöld'

Actual positions: USA 76°03'S 165°00'E
GBC 76°00'S 165°00'E

Proposal to SCUFN:

New position in SCUFN and CGA – GCB: Adopt from USA:

76°03'S, 165°00'E

Proposal to CGA:

New name in CGA – USA:

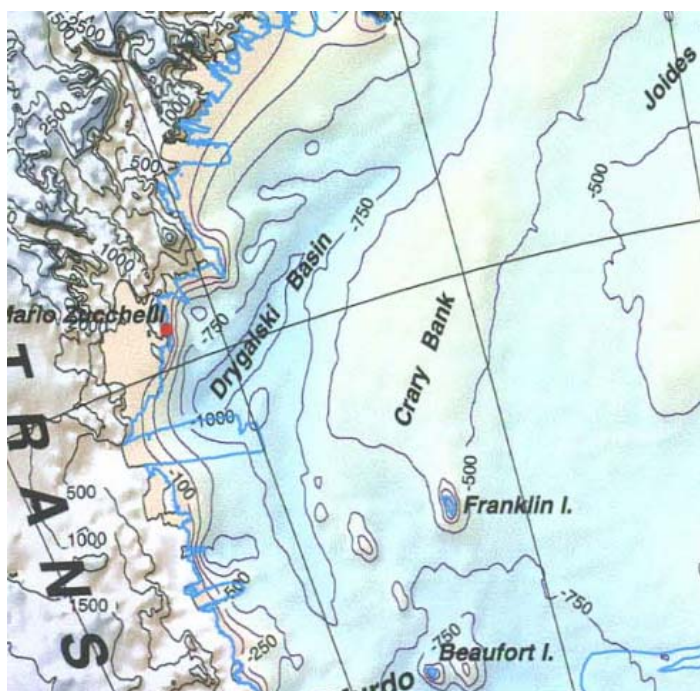
Nordenskjöld Basin

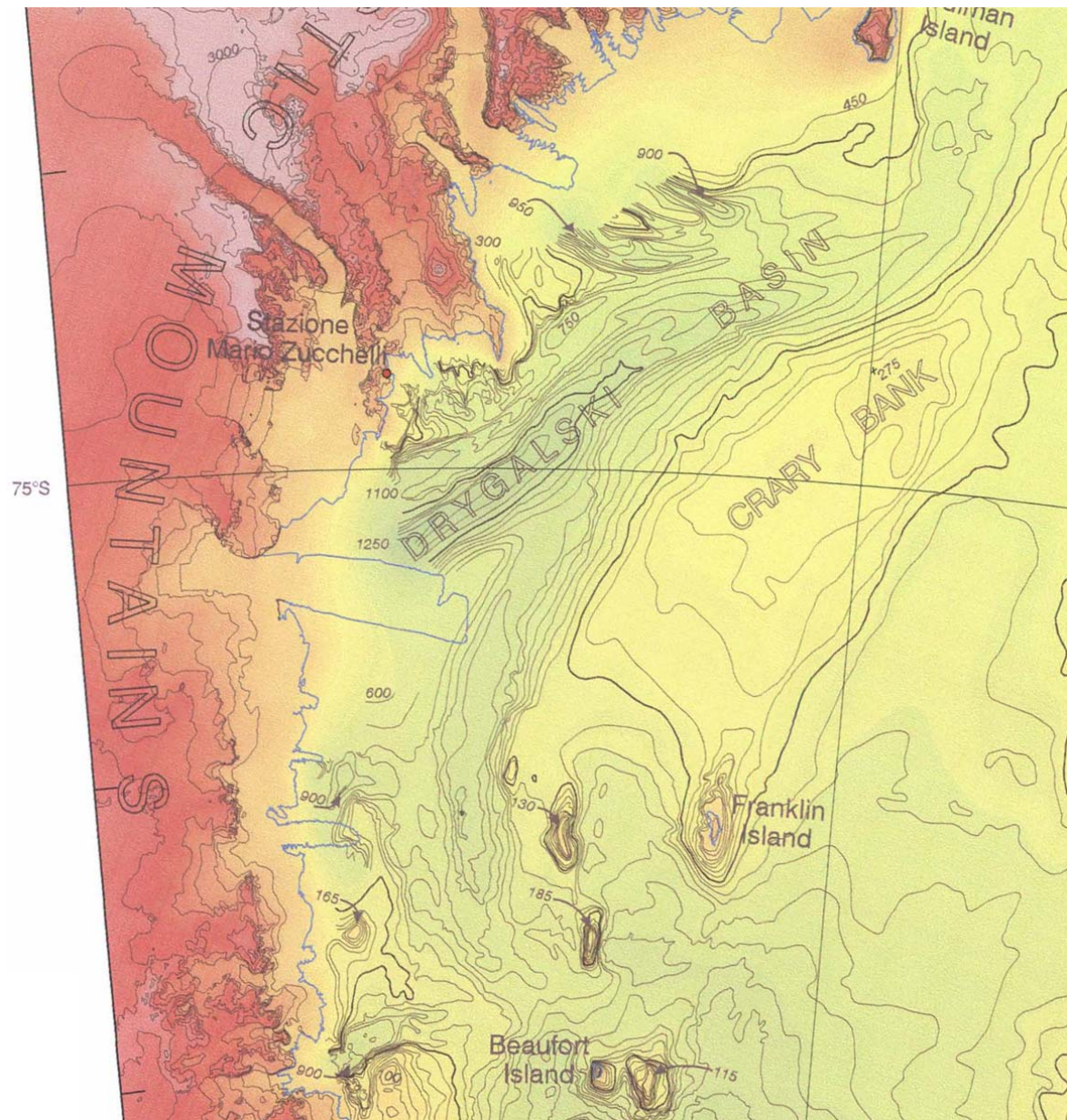
Feature Name: Franklin
Generic Term: Shoal
B-8 Feature Key: 568
Reason: Adjust generic term and position of CGA feature #4923 –
GBC: --
USA: Name approved 6/88 (ACUF 228)
The actual generic term 'shoals' is not valid following B-6
and should be changed to 'shoal'
Actual positions: USA 76°00'S 169°00'E
GBC 75°50'S 169°00'E

Proposal to SCUFN:
New position in SCUFN and CGA - GBC: Adopt from USA:
76°00'S, 169°00'E

Feature Name: Crary
Generic Term: Bank
B-8 Feature Key: 367
Reason: Adjust position of CGA feature #3090 –
GBC: --
USA: Name approved 6/88 (ACUF 228)
Actual positions: USA 75°00'S 169°00'E
GBC 74°55'S 170°00'E

Proposal to SCUFN:
New position in SCUFN and CGA - GBC: Adopt from USA:
75°00'S, 169°00'E





Proposal (25) for changes in SCUFN does not exist

Ralf Krocker
Van-Ronzelen-Straße 2
27568 Bremerhaven - Germany



Bremerhaven, March 2008



Proposal (26) for changes in SCUFN



Features handled in this proposal:

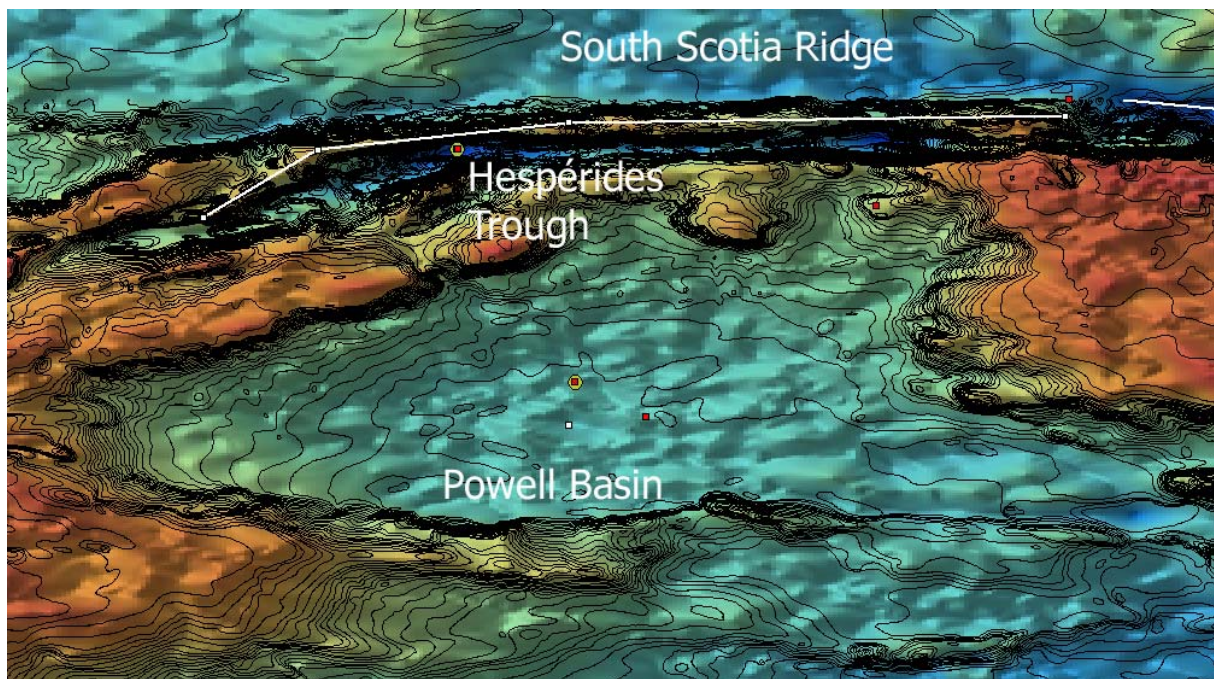
2576, Hespérides Trough

1319, Powell Basin

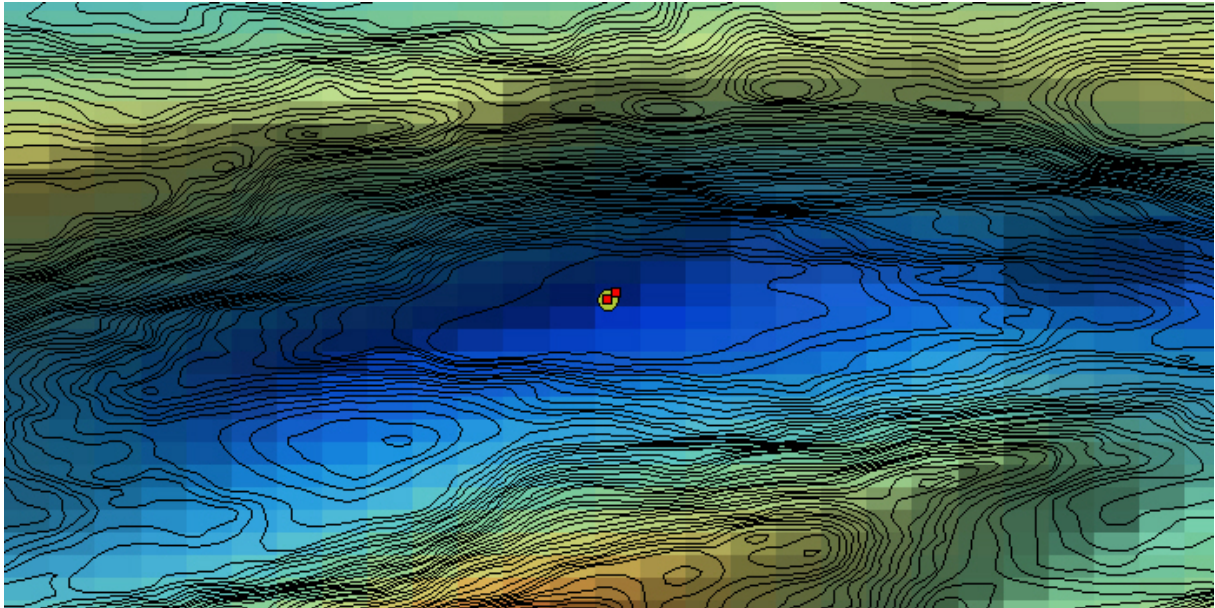
1585, South Scotia Ridge

-   New feature coordinates
(Points, lines, polygons)

-   Feature in SCUFN
(Points, lines, polygons)
- Feature in CGA (only points)



Grid: ETOPO2; Isolines: AWI-BCWS – Sheet 534



Grid: ETOPO2; Isolines: AWI-BCWS – Sheet 534

Feature Name: Hespérides
 Generic Term: Trough
 B-8 Feature Key: 2576
 Reason: Adjust position of CGA feature #6322 –
 GBC: (1994)
 USA: Name approved 11/95 (ACUF 265)
 Actual positions: USA 60°21'S 50°50'W
 GBC 60°21'18"S 50°50'24"W

Proposal to SCUFN:

New position in SCUFN and CGA - GBC:

Trunc arc seconds of positions given by SCUFN to 60°21'S, 50°50'W, what leads to positions given by USA.

Feature Name: Powell
 Generic Term: Basin
 B-8 Feature Key: 1319
 Reason: Adjust position of CGA feature #11540 –
 GBC: --
 USA: Name approved 10/77 (ACUF 177)
 Actual position: USA 62°15'S 49°30'W
 GBC 62°00'S 50°00'W

Proposal to SCUFN:

New position in SCUFN and CGA – GBC, USA: As point feature:
 62°18' S, 50°02' W



Grid: ETOPO2

Feature Name: South Scotia
Generic Term: Ridge
B-8 Feature Key: 1585
Reason: Adjust position of CGA feature #13739 –
GBC: (–)
USA: Name approved 6/87 (ACUF 225)
Actual positions: GBC 60°45'S 47°52'W
USA 60°00'S 46°30'W

Proposal to SCUFN:

New position in SCUFN and CGA - GBC: As line feature:

60°07' S, 46°32' W |
60°10' S, 50°03' W |
60°21' S, 51°50' W |
60°50' S, 52°38' W

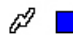
Proposal (27) for changes in SCUFN


Features handled in this proposal:

505, Endurance Ridge

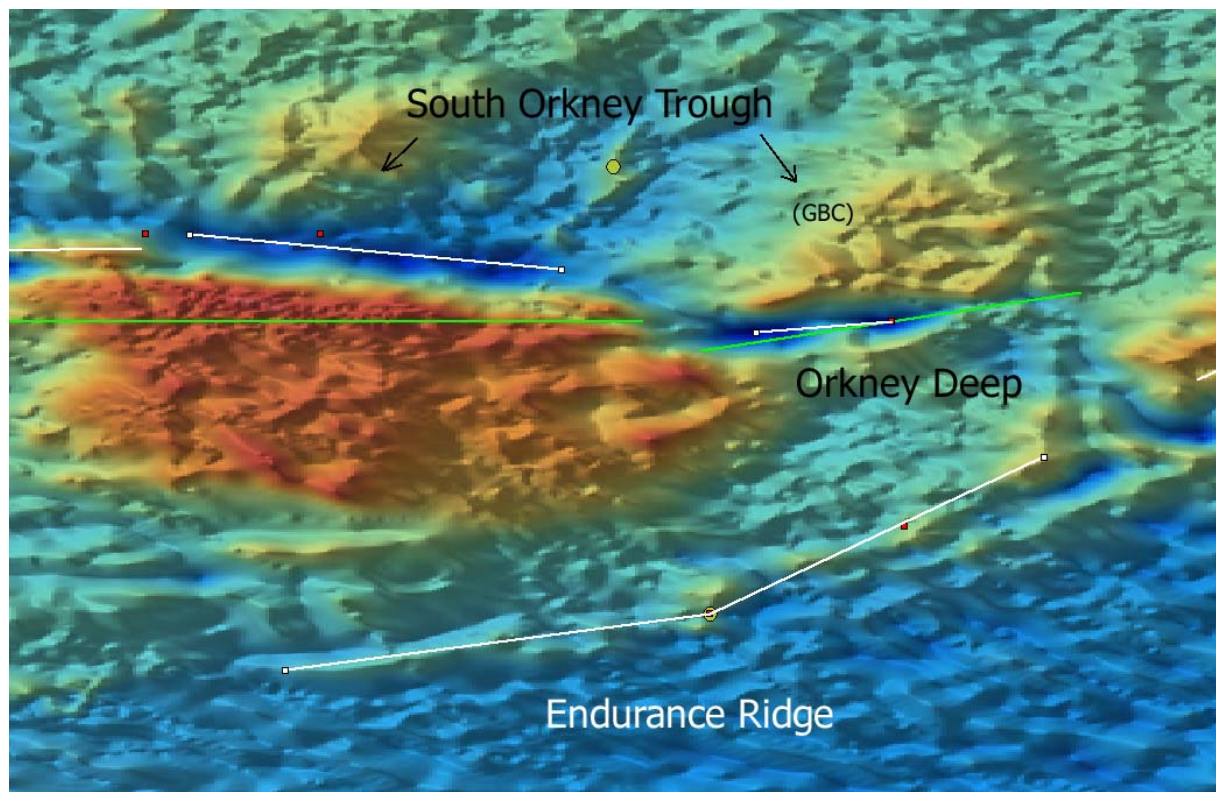
1219, Orkney Deep

1582, South Orkney Trough

▣  New feature coordinates
(Points, lines, polygons)

◊  Feature in SCUFN
(Points, lines, polygons)

■ Feature in CGA (only points)



Grid: ETOPO2; Isolines: GEBCO

Feature Name: Endurance
Generic Term: Ridge
B-8 Feature Key: 505
Reason: Adjust position of CGA feature #4260
GBC: (--)
USA: Name approved 6/87 (ACUF 225).
Actual positions: USA 62°30'S 40°00'W
GBC 63°15'S 41°40'W

Proposal to SCUFN:

New position in SCUFN and CGA – GBC, USA: As line feature:

61°54' S, 38°49' W |
63°06' S, 41°37' W |
63°44' S, 45°18' W

Feature Name: Orkney
Generic Term: Deep
B-8 Feature Key: 1219
Reason: Adjust position of CGA feature #13731
Comment: Feature has no coordinates or other attributes but cross reference to South Orkney Trough. (Feature is named in AWI-BCWS).
Actual position: (none)

Proposal to SCUFN:

New positions in SCUFN : As line feature:

60°50' S, 41°16' W |
60°45' S, 40°07' W

New positions in SCUFN : As point feature (deepest position):

60°50° S, 41°25' W

Proposal to CGA:

Adopt feature in CGA – GBC.

Feature Name: South Orkney
Generic Term: Trough
B-8 Feature Key: 1582
Reason: Adjust position of CGA feature #13731 –
USA: Approved 10/77 (ACUF 177)
GBC: Accredited by: SCUFN (Oct. 2002)
Actual positions: USA 60°00'S 45°00'W
GBC 60°45'S 40°07'W

Proposal to SCUFN:

New positions in SCUFN and CGA – GBC, USA: As line feature:

60°18' S, 42°57' W |
60°00' S, 46°07' W


Ralf Krocker
Van-Ronzelen-Straße 2
27568 Bremerhaven - Germany




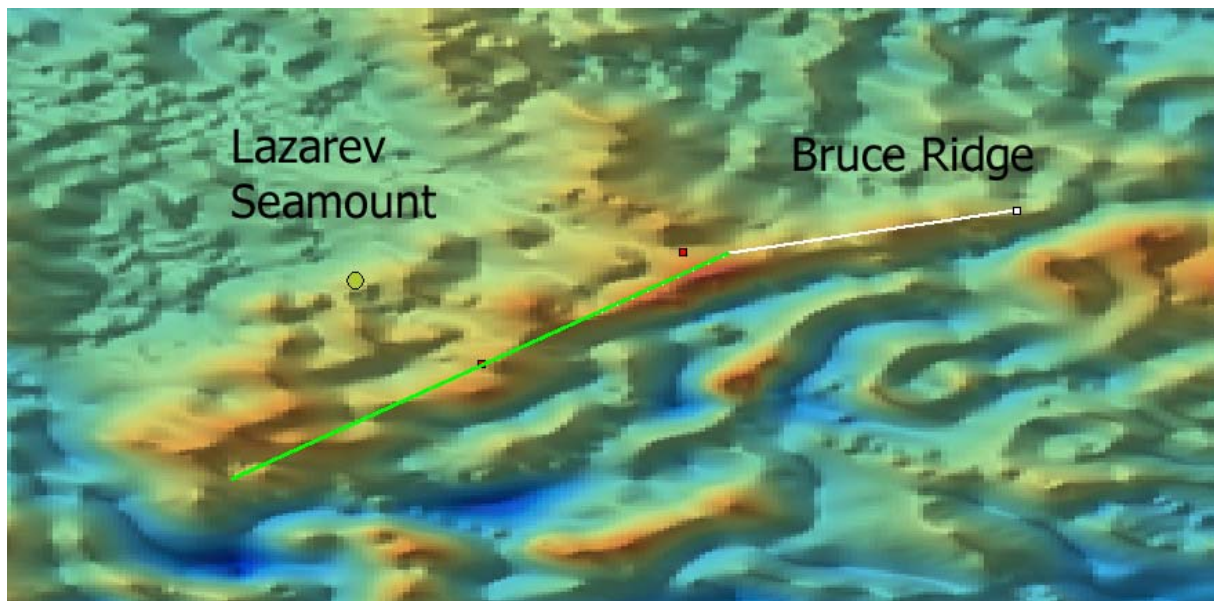
Bremerhaven, March 2008

Proposal (28) for changes in SCUFN

Features handled in this proposal:
224, Bruce Ridge
3673, Lazarev Seamount

-  ■ New feature coordinates
(Points, lines, polygons)

-  ■ Feature in SCUFN
(Points, lines, polygons)
- Feature in CGA (only points)



Grid: ETOPO2

Feature Name: Bruce
Generic Term: Ridge
B-8 Feature Key: 224
Reason: Harmonise position of CGA feature #1938 –
GBC: Accredited by: SCGN (Apr. 1987)
USA: Name approved 4/67 (ACUF 72)

Actual position: GBC: 60°37'S, 36°07'W
USA: 60°00'S, 35°00'W

SCUFN: 60°00'S, 34°45'W |
61°15'S, 37°30'W

Proposal to SCUFN:

New position in SCUFN and CGA – GBC, USA:

59°46' S, 33°10' W |

60°00' S, 34°45' W |

61°15' S, 37°30' W

← adopted from SCUFN

← adopted from SCUFN

Feature Name: Lazarev
Generic Term: Seamount
B-8 Feature Key: 3673
Reason: Possibly improper position
Comment: Change also position of CGA feature #17378 – GBC: (04/2003)

Proposal to SCUFN: Check with original data.

Ralf Krockner
Van-Ronzelen-Straße 2
27568 Bremerhaven - Germany

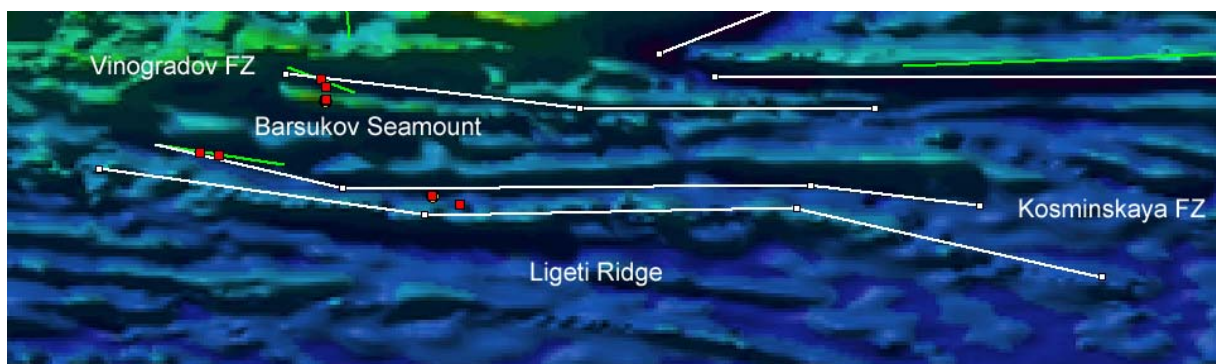
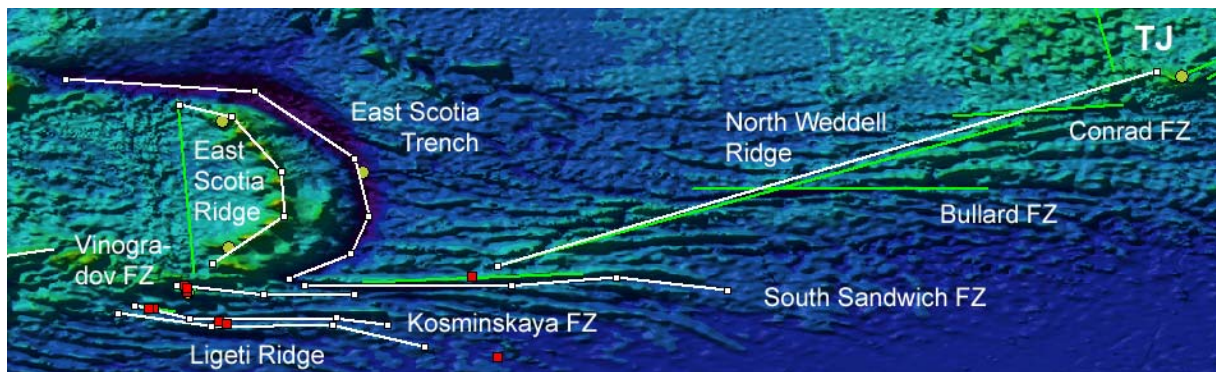


Bremerhaven, March 2008



Proposal (29) for changes in SCUFN



Features handled in this proposal:

- 2483, Barsukov Seamount
- 2787, East Scotia Ridge
- 2670, Kosminskaya Fracture Zone
- 897, Ligeti Ridge
- 1879, North Weddell Ridge
- 1583, South Sandwich Fracture Zone
- 2187, South Sandwich Trench
- 2669, Vinogradov Fracture Zone



Grid: ETOPO2

-   New feature coordinates
(Points, lines, polygons)
-

-   Feature in SCUFN
(Points, lines, polygons)

- Feature in CGA (only points)

Feature Name: Barsukov
Generic Term: Seamount
B-8 Feature Key: 2483
Reason: Adjust position of CGA feature #952
Actual positions: USA 61°03'S 29°12'W
GBC 61°03'**30**'S 29°12'**30**'W
Comment: Cut arc seconds of positions given by SCUFN
to obtain positions given by USA.

Proposal to SCUFN:

New position in SCUFN and CGA – GBC: Adopt positions given by USA:
61°03'S, 29°12'W

Feature Name: East Scotia
Generic Term: Ridge
B-8 Feature Key: 2787
Reason: More coordinates for line feature needed.
Actual positions in SCUFN : 55°20'S, 29°30'W
60°30'S, 29°00'W

Proposal to SCUFN:

New positions in SCUFN: As line feature:
55°30' S, 29°26' W |
55°51' S, 27°52' W |
57°27' S, 26°26' W |
58°48' S, 26°18' W |
60°14' S, 28°28' W

Feature Name: Kosminskaya
Generic Term: Fracture Zone
B-8 Feature Key: 2670
Reason: Adjust position of CGA feature #7773
Actual positions: USA 61°32' S, 30°20' W
GBC 61°33' S, 30°10' W
SCUFN 61°27' S, 30°45' W |
61°38' S, 29°35' W

Proposal to SCUFN:

New positions in CGA – GBC, USA: As line feature:

61°27' S, 30°45' W | ← actual position in SCUFN
61°51' S, 29°02' W |
61°49' S, 24°52' W |
62°00' S, 23°20' W

Feature Name: Ligeti
Generic Term: Ridge
B-8 Feature Key: 897
Reason: Adjust position of CGA feature #8439
Actual positions: USA 62°00'S 28°00'W
GBC 61°55'S 28°15'W

Proposal to SCUFN:

New positions in SCUFN and CGA – GBC, USA: As line feature:

61°40' S, 30°15' W |
62°05' S, 28°16' W |
62°01' S, 24°60' W |
62°39' S, 22°13' W

Feature Name: South Sandwich
Generic Term: Fracture Zone
B-8 Feature Key: 1583
Reason: Adjust position of CGA feature #13738 –
GBC: (–)
USA : Name approved 6/87 (ACUF 225)
Actual positions: USA 63°00'S 20°00'W
GBC 60°37'S 20°45'W

Proposal to SCUFN:

New positions in SCUFN and CGA – GBC, USA: As line feature:

60°51' S, 25°42' W |
60°51' S, 19°47' W |
60°37' S, 16°30' W |
60°59' S, 13°12' W

Proposal to SCUFN: Discuss with ACUF to check US position, which differs by ~3°

Feature Name: South Sandwich
Generic Term: Trench
B-8 Feature Key: 2187
Reason: Geometric description as line recommended.

Proposal to SCUFN:

New positions in SCUFN: As line feature:

54°45' S, 32°46' W |
55°07' S, 27°11' W |
57°04' S, 24°14' W |
58°45' S, 23°48' W |
59°55' S, 24°21' W |
60°38' S, 26°12' W

Feature Name: Vinogradov
Generic Term: Fracture Zone
B-8 Feature Key: 2669
Reason: Adjust position of CGA feature #15530 –
GBC: (06/1997)
USA : Name approved 9/97 (ACUF 272)
Actual positions: USA 60°56'S 29°12'W
GBC 60°52'15"S 29°15'06"W

Proposal to SCUFN:

New positions in SCUFN and CGA – GBC, USA: As line feature:

60°49' S, 29°34' W |
61°08' S, 26°50' W |
61°08' S, 24°16' W

Feature Name: North Weddell
Generic Term: Ridge
B-8 Feature Key: 1879
Reason: Improper localisation of the feature.
GBC: SCGN (May 1989)
Comment: In GEBCO Digital Atlas “WorldMap2007” this feature is labeled as “American Antarctic Ridge”

Proposal to SCUFN:


New positions in SCUFN and CGA – GBC: As line feature:


60°15' S, 20°00' W | ← actual position in SCUFN
54°30' S, 0°30' W | ← Triple Junction (ref.1)

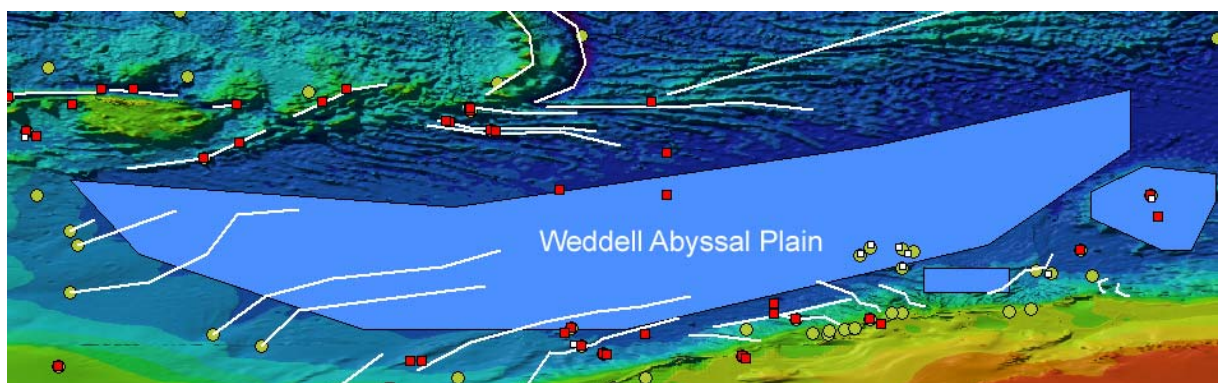
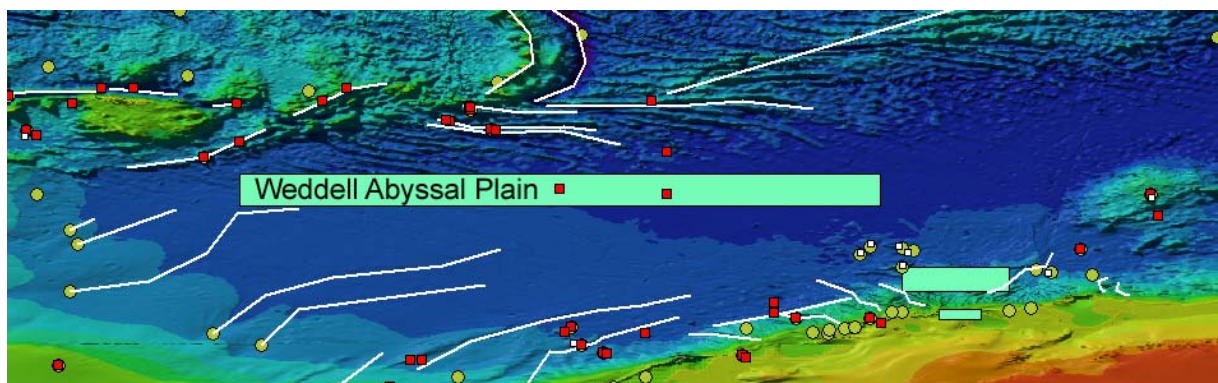
ref.1: Triple Junction of South American, African and Antarctic Plate.
See SCUFN feature ‘Southwest Indian Ridge’ (key 1590: see proposal 33) and
‘Mid-Atlantic Ridge’ (key 1035).

Proposal (30) for changes in SCUFN

Features handled in this proposal:
1787, Weddell Abyssal Plain

-  New feature coordinates
(Points, lines, polygons)

-  Feature in SCUFN
(Points, lines, polygons)
- Feature in CGA (only points)



Grid: ETOPO2

Feature Name: Weddell
Generic Term: Abyssal Plain
B-8 Feature Key: 1787
Reason: Adjust generic term and position of CGA feature #15829 –
GBC: --
USA: Name approved 6/87 (ACUF 225)

The actual generic term 'plain' is not valid following B-6 and should be changed to 'abyssal plain'

Geometric description as closed polygon recommended.

Actual positions in SCUFN:

Two positions ⇒ line feature
or lower-left and upper-right corner of a rectangle?

65°30' S, 40°00' W |

64°00' S, 10°00' W

Actual positions in CGA: USA 65°00'S 20°00'W
GBC 64°45'S 25°00'W

Proposal to SCUFN:

New positions in SCUFN and CGA – GBC, USA: As closed polygon:

64°15' S, 48°00' W |

67°45' S, 44°45' W |

71°15' S, 34°15' W |

71°15' S, 22°00' W |

67°20' S, 5°00' W |

62°50' S, 1°40' E |

60°00' S, 1°40' E |

62°40' S, 10°15' W |

65°30' S, 30°00' W |

64°15' S, 48°00' W |

64°15' S, 48°00' W

← list 1st position twice to indicate a closed polygon

Proposal to CGA:

New Name in CGA – USA: Weddell Abyssal Plain

Ralf Krocke
Van-Ronzelen-Straße 2
27568 Bremerhaven - Germany





Bremerhaven, March 2008

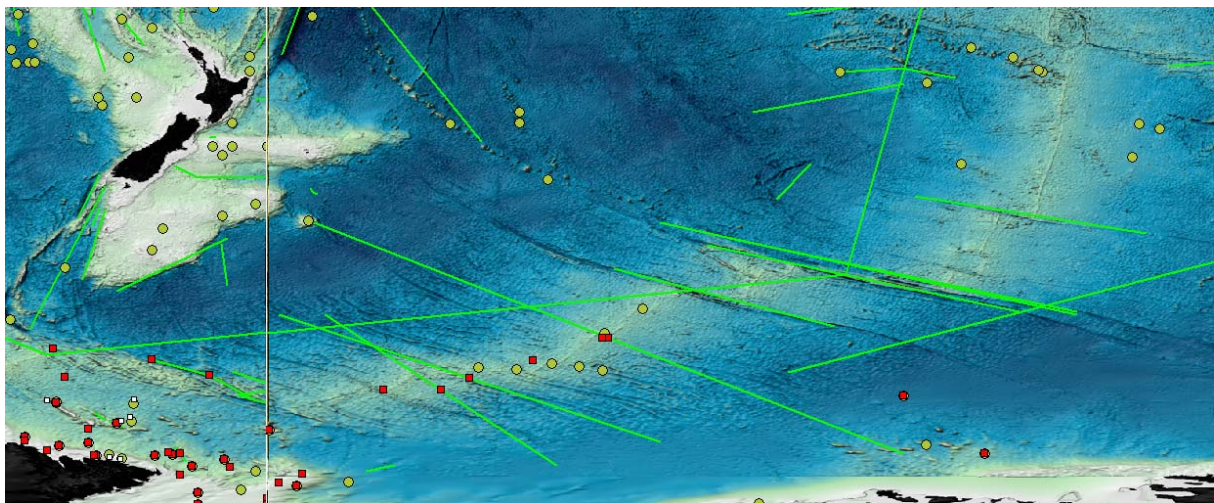
Proposal (31) for changes in SCUFN

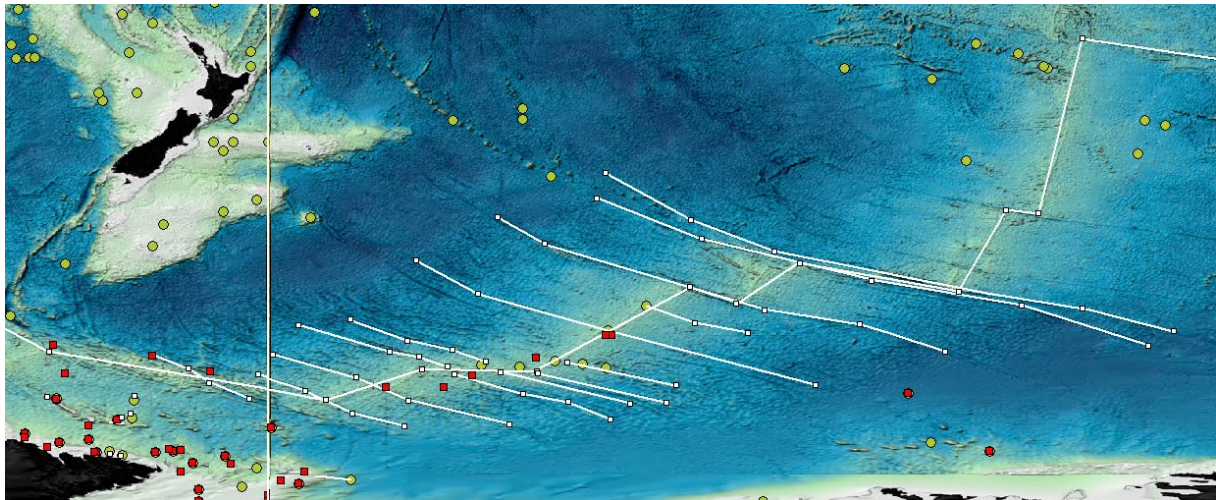
Features handled in this proposal:

2719, Antipodes Fracture Zone
2481, Emerald Fracture Zone
2781, Erebus Fracture Zone
2370, Heitzler Fracture Zone
2917, La Rose Fracture Zone
2913, Le Petit Prince Fracture Zone
2916, Le Renard Fracture Zone
1234, Pacific Antarctic Ridge
2371, Pitman Fracture Zone
2912, Saint-Exupéry Fracture Zone

-  New feature coordinates
(Points, lines, polygons)

-  Feature in SCUFN
(Points, lines, polygons)
- Feature in CGA (only points)





Grid: ETOPO2

Feature Name: Pacific-Antarctic
 Generic Term: Ridge
 B-8 Feature Key: 1234
 Reason: Adjust position of CGA feature #10806 –
 GBC: Accredited by: SCGN (May 1993)
 USA: Name approved 11/71 (ACUF 130)
 More coordinates for line feature needed.
 Actual positions: USA **62°00'S** **157°00'W**
 GBC **58°00'S** **145°30'E**

Proposal to SCUFN:

New positions in SCUFN and CGA – GBC, USA: As line feature:

34°30' S, 110°00' W | ← Triple Junction (ref. 1)
 49°45' S, 113°48' W | 49°09' S, 116°34' W |
 56°11' S, 120°39' W | 53°44' S, 134°26' W |
 57°12' S, 139°38' W | 55°53' S, 143°46' W |
 63°10' S, 157°19' W | 62°54' S, 166°46' W |
 65°36' S, 175°13' W | 64°41' S, 180°00' W |
 64°41' S, 180°00' E |
 61°30' S, 161°00' E ← actual position in SCUFN,
 Triple Junction (ref. 2)

ref.1: Triple Junction of Pacific, Nazca and Antarctic Plate. Plates are separated by SCUFN feature 'Chile Ridge' (key 310: see proposal 35) and 'East Pacific Rise' (key 469).

ref.2: Triple Junction of Indian-Australian Plate, Antarctic Plate and Pacific Plate. Plates are separated by 'Southeast Indian Ridge' (key 1575: see proposal 34)

Feature Name: Antipodes
Generic Term: Fracture Zone
B-8 Feature Key: 2719
Reason: Adjust position of CGA feature #16641 –
GBC: SCUFN (Jun. 1997)
USA: Name approved 9/97 (ACUF 272).
More coordinates for line feature needed.
Comment: Also named: l'Astronome Fracture Zone

Proposal to SCUFN:

New positions in SCUFN and CGA – GBC, USA: As line feature:

64°15' S, 133°00' W |
59°35' S, 150°50' W |
56°30' S, 162°00' W |
53°30' S, 167°30' W

Feature Name: Emerald
Generic Term: Fracture Zone
B-8 Feature Key: 2481
Reason: Adjust positions of CGA feature: #4225 –
GBC: Accredited by: SCUFN (May 1995)
USA: Name approved 6/97 (ACUF 270).
Possibly improper localisation of the feature.
More coordinates for line feature needed.
Actual positions: USA 62°00'S 170°00'E
GBC 63°18'S 175°00'E

Proposal to SCUFN:

New positions in SCUFN and CGA – GBC, USA: As line feature:

61°44' S, 169°44' E |
63°10' S, 173°20' E |
64°04' S, 174°39' E |
65°34' S, 178°21' E

Feature Name: Erebus (*) – (only proposed)
Generic Term: Fracture Zone
B-8 Feature Key: 2781
Reason: More coordinates for line feature needed.
Accreditation: SCUFN (Jun. 2001)

Proposal to SCUFN:

New positions in SCUFN: As line feature:

67°47' S, 168°22' W |
66°41' S, 172°49' W |
64°40' S, 177°16' W |
63°28' S, 180°55' W

Feature Name: Heirtzler
Generic Term: Fracture Zone
B-8 Feature Key: 2370
Reason: Adjust position of CGA feature #16689 –
GBC: Accredited by: SCGN (May 1993)
USA: Name approved 3/93 (ACUF 256)
More coordinates for line feature needed.
Actual positions: USA 63°30'S 162°30'E
GBC 63°30'S 162°30'W
SCUFN 58°00'S, 179°00'W |
69°00'S, 146°00'W

Proposal to SCUFN:

New positions in CGA – GBC, USA: As line feature:

63°20' S, 164°15' W |
64°54' S, 158°45' W |
65°47' S, 154°22' W |
67°10' S, 150°40' W

Feature Name: La Rose (*) – (only proposed)
Generic Term: Fracture Zone
B-8 Feature Key: 2917
Reason: Improper localisation of the feature.
Geometric description as line recommended.
Comment: After correction the feature can be adopted in CGA.

Proposal to SCUFN:

New positions in SCUFN: As line feature:

63°05' S, 160°27' W |
65°52' S, 148°55' W

Feature Name: Le Géographe (*) – (only proposed)
Generic Term: Fracture Zone
B-8 Feature Key: 2915
Reason: Geometric description as line recommended.
Comment: After correction the feature can be adopted in CGA.

Proposal to SCUFN:

New positions in SCUFN: As line feature:

57°30' S, 147°35' W | ← actual position in SCUFN
58°53' S, 143°18' W |
59°44' S, 138°46' W

Feature Name: Le Petit Prince (*) – (only proposed)
Generic Term: Fracture Zone
B-8 Feature Key: 2913
Reason: Improper localisation of the feature.
Geometric description as line recommended.
Comment: After correction the feature can be adopted in CGA.

Proposal to SCUFN:

New positions in SCUFN: As line feature:
62°17' S, 154°28' W |
64°20' S, 145°03' W

Feature Name: Le Renard (*) – (only proposed)
Generic Term: Fracture Zone
B-8 Feature Key: 2916
Reason: Improper localisation of the feature.
Geometric description as line recommended.
Comment: After correction the feature can be adopted in CGA.

Proposal to SCUFN:

New positions in SCUFN: As line feature:
63°13' S, 157°11' W |
65°46' S, 145°58' W

Feature Name: Saint-Exupéry (*) – (only proposed)
Generic Term: Fracture Zone
B-8 Feature Key: 2912
Reason: Improper localisation of the feature.
Geometric description as line recommended.
Comment: After correction the feature can be adopted in CGA.

Proposal to SCUFN:

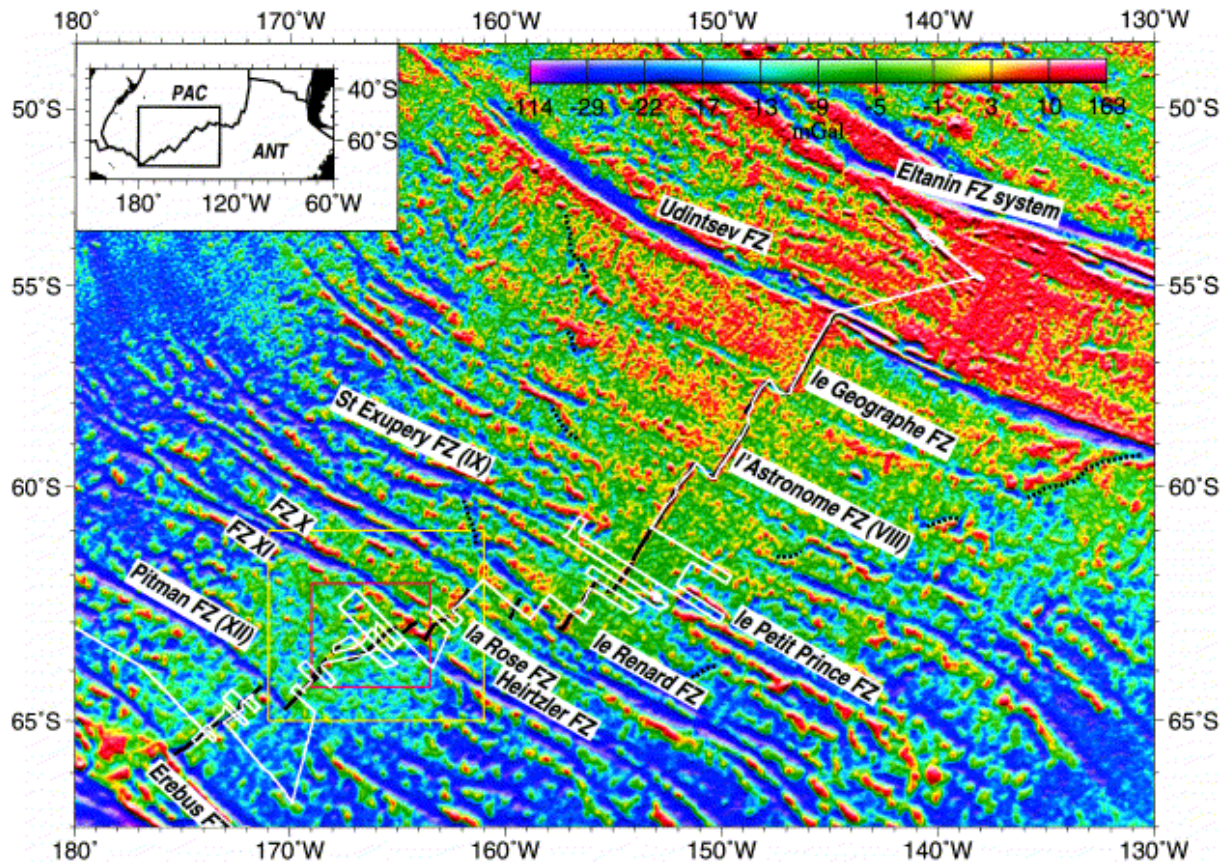
New positions in SCUFN: As line feature:
62°00' S, 155°41' W |
58°33' S, 166°56' W

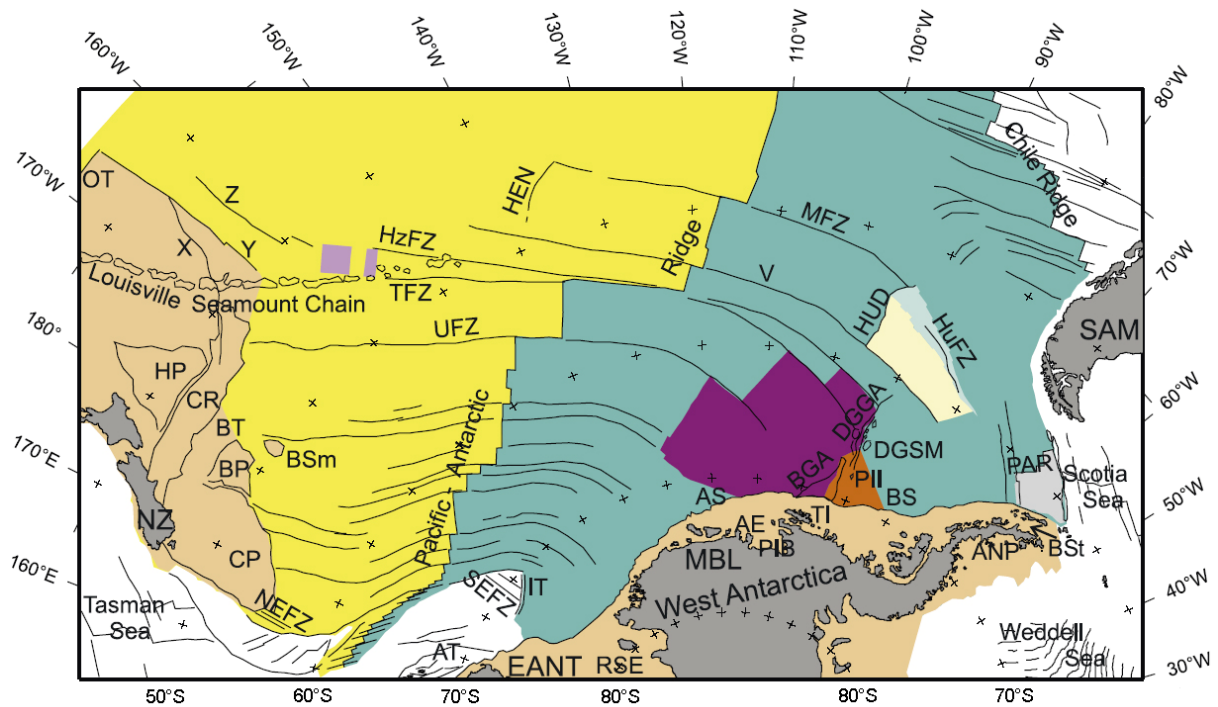
Feature Name: Pitman
Generic Term: Fracture Zone
B-8 Feature Key: 2371
Reason: Adjust position of CGA feature # 16741 –
GBC: Accredited by: SCGN (May 1993)
USA: Name approved 3/93 (ACUF 256)
More coordinates for line feature needed.

Proposal to SCUFN:

New positions in SCUFN and CGA – GBC, USA: As line feature:

- 67°39' S, 159°20' W |
- 65°32' S, 168°14' W |
- 63°42' S, 172°19' W |
- 61°36' S, 179°47' W





AE, Amundsen Embayment; ANP, Antarktische Halbinsel; AS, Amundsenmeer; AT, Adare-Trog; BGA, Bellingshausen-Schwereanomalie; BS, Bellingshausenmeer; BSt, Bransfield Straße; DGGA, De Gerlache Schwereanomalie; DGSM, De Gerlache Seamounts; EANT, Ostantarktis; HEN, Henry-Trog; HUD, Hudson-Trog; HuFZ, Humboldt-FZ; HzFZ, Heezen-FZ; IT, Iselin-Trog; MBL, Marie Byrd Land; MFZ, Menard-FZ; PAR, Phoenix-Antarktis-Rücken; PIB, Pine Island Bucht; RSE, Ross Sea Embayment; SAM, Südamerika; SEFZ, südlicher Teil der Emerald FZs; TI, Thurston Island; TFZ, Tharp-FZ; UFZ, Udintsev-FZ; V, FZ 'V'. Schiefe Mercator-Projektion in 137,5° W, 65° S zentriert und mit Projektionsäquator in 74° W, 60° S.

Proposal (32) for changes in SCUFN does not exist

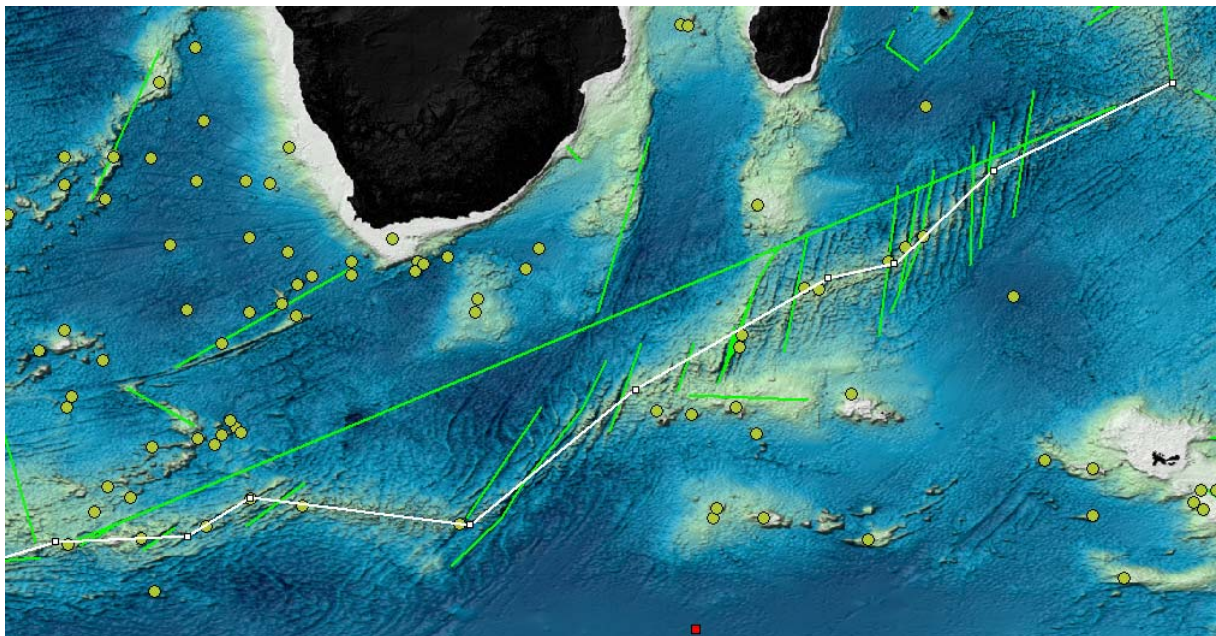
Ralf Krocke
Van-Ronzelen-Straße 2
27568 Bremerhaven - Germany



Bremerhaven, March 2008

Proposal (33) for changes in SCUFN

Features handled in this proposal:
1590, Southwest Indian Ridge



Grid: ETOPO2

- ↗ ■ New feature coordinates
(Points, lines, polygons)

- ↗ ■ Feature in SCUFN
(Points, lines, polygons)
- Feature in CGA (only points)

Feature Name: Southwest Indian
Generic Term: Ridge
B-8 Feature Key: 1590
Reason: Improper localisation of the feature

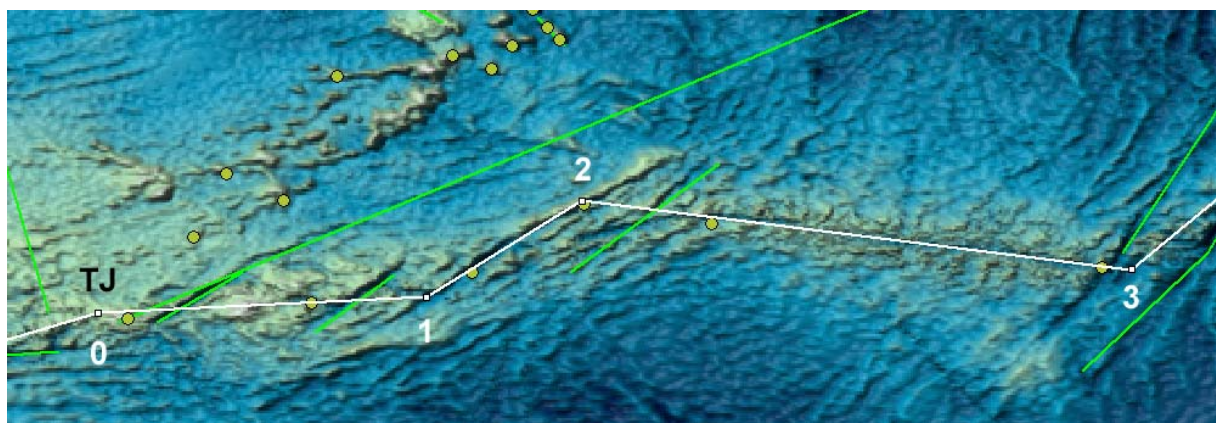
Proposal to SCUFN:

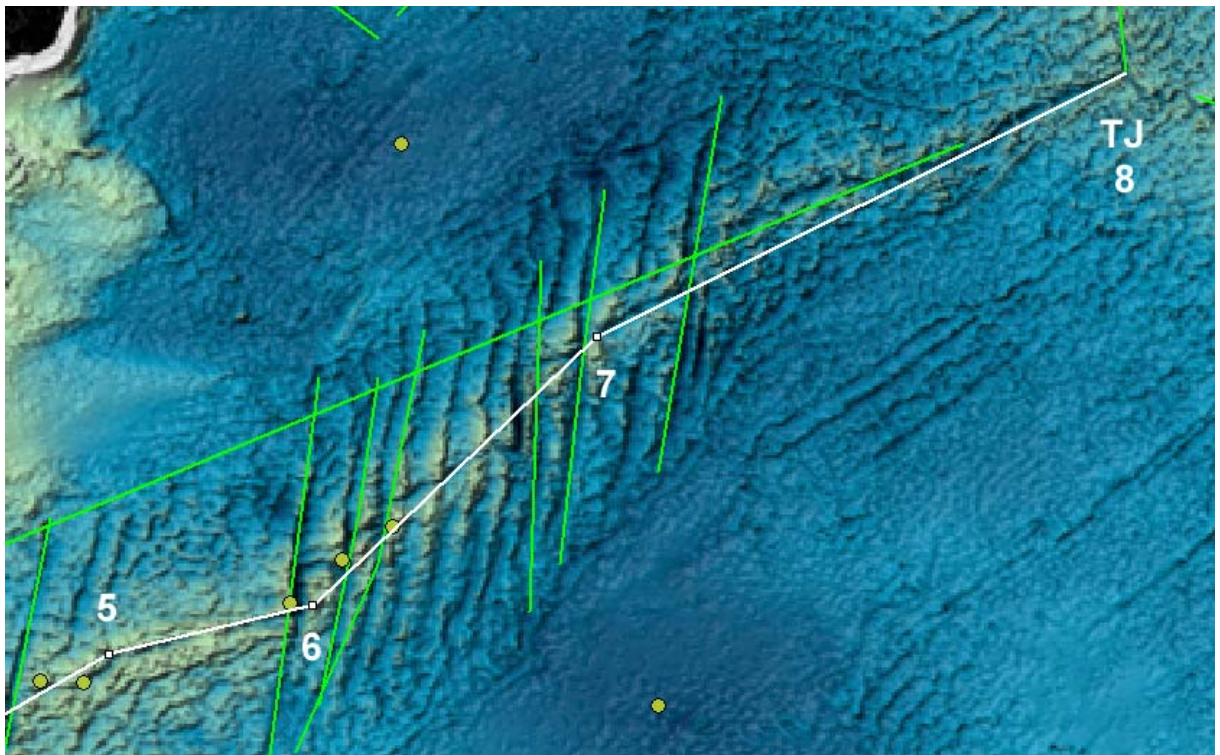
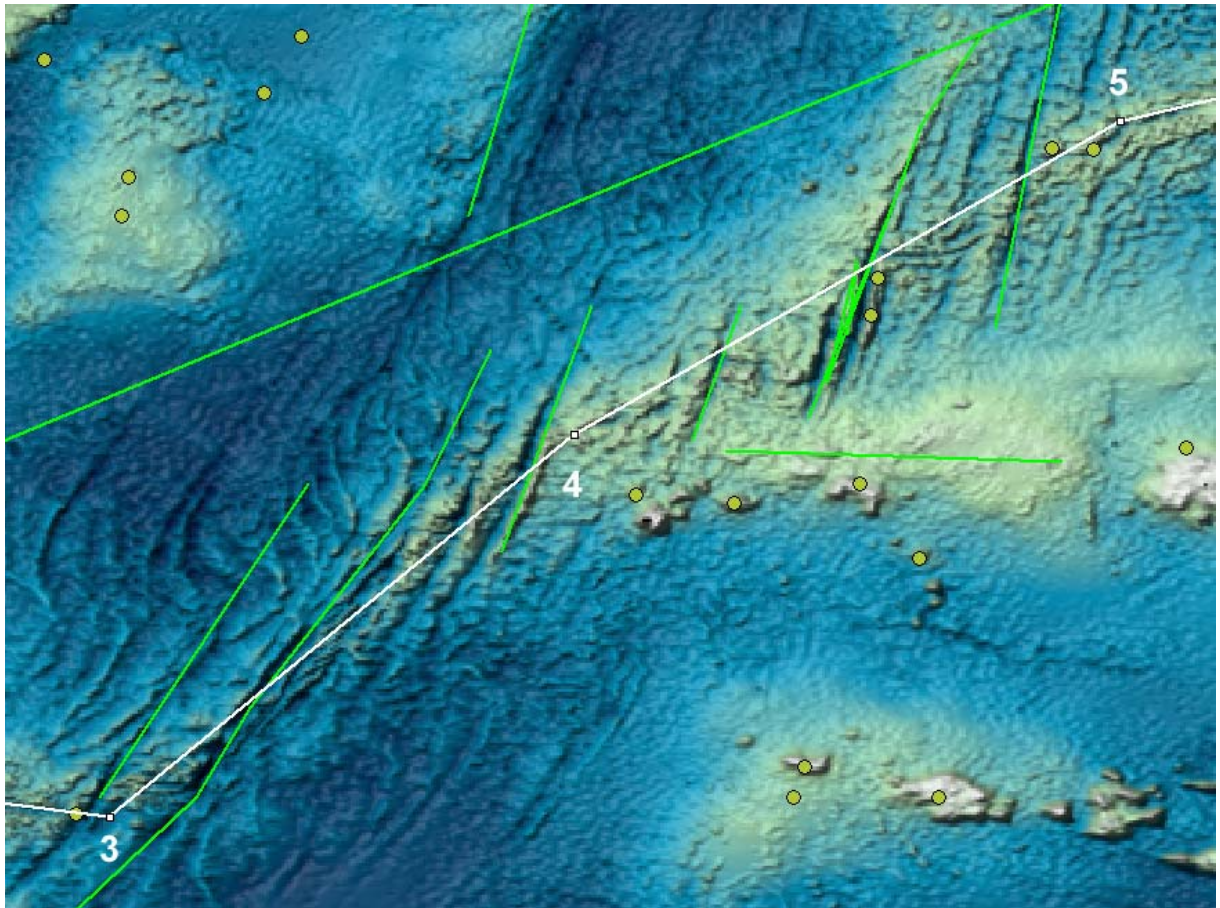
New position in SCUFN: As line feature:

0	54°30' S, 0°30' W	← Triple Junction (ref.1)
1	54°06' S, 7°51' E	
2	51°41' S, 11°46' E	
3	53°26' S, 25°43' E	
4	44°55' S, 36°03' E	
5	37°54' S, 48°16' E	
6	36°51' S, 52°39' E	
7	31°08' S, 58°39' E	
8	25°30' S, 70°00' E	← Triple Junction (ref.2) (existing position in SCUFN)

ref.1: Triple Junction of south american, african and antarctic plate.
See SCUFN feature 'Northweddell Ridge' (key 1879: see proposal 29) and
'Mid-Atlantic Ridge' (key 1035).

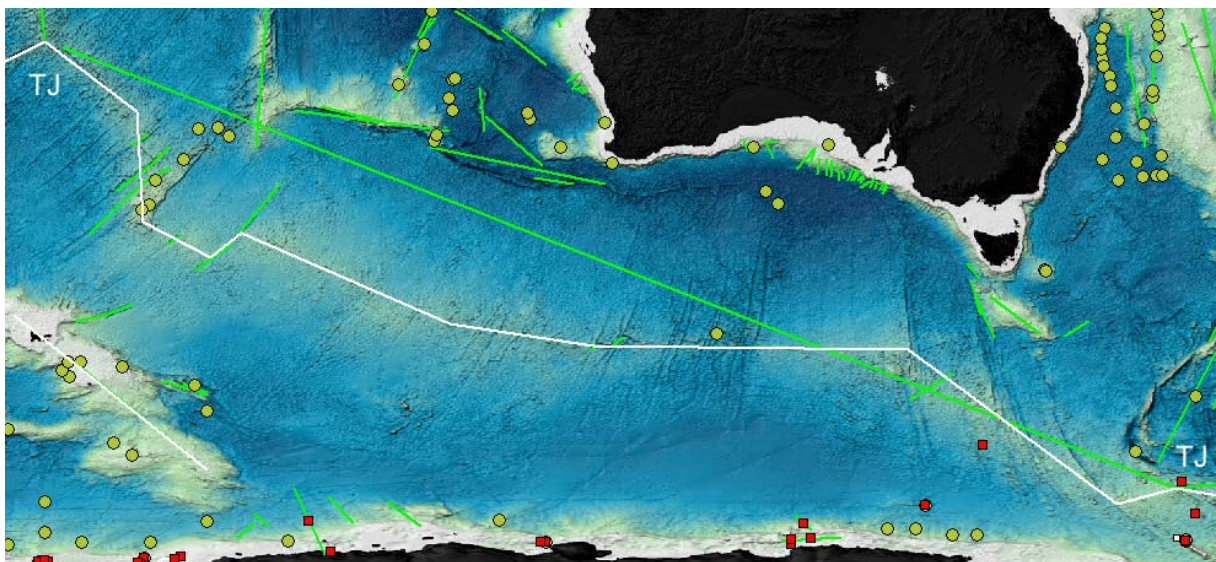
ref.2: Triple Junction
See SCUFN feature 'Southeast Indian Ridge' (key 1575: see proposal 34) and
'Central Indian Ridge' (key 285) .







Proposal (34) for changes in SCUFN

Features handled in this proposal:
1575, Southeast Indian Ridge



Grid: ETOPO2

-  ■ New feature coordinates
(Points, lines, polygons)

-  ■ Feature in SCUFN
(Points, lines, polygons)
- Feature in CGA (only points)

Feature Name: Southeast Indian
 Generic Term: Ridge
 B-8 Feature Key: 1575
 Reason: Improper localisation of the feature
 GBC: SCGN (May 1993)

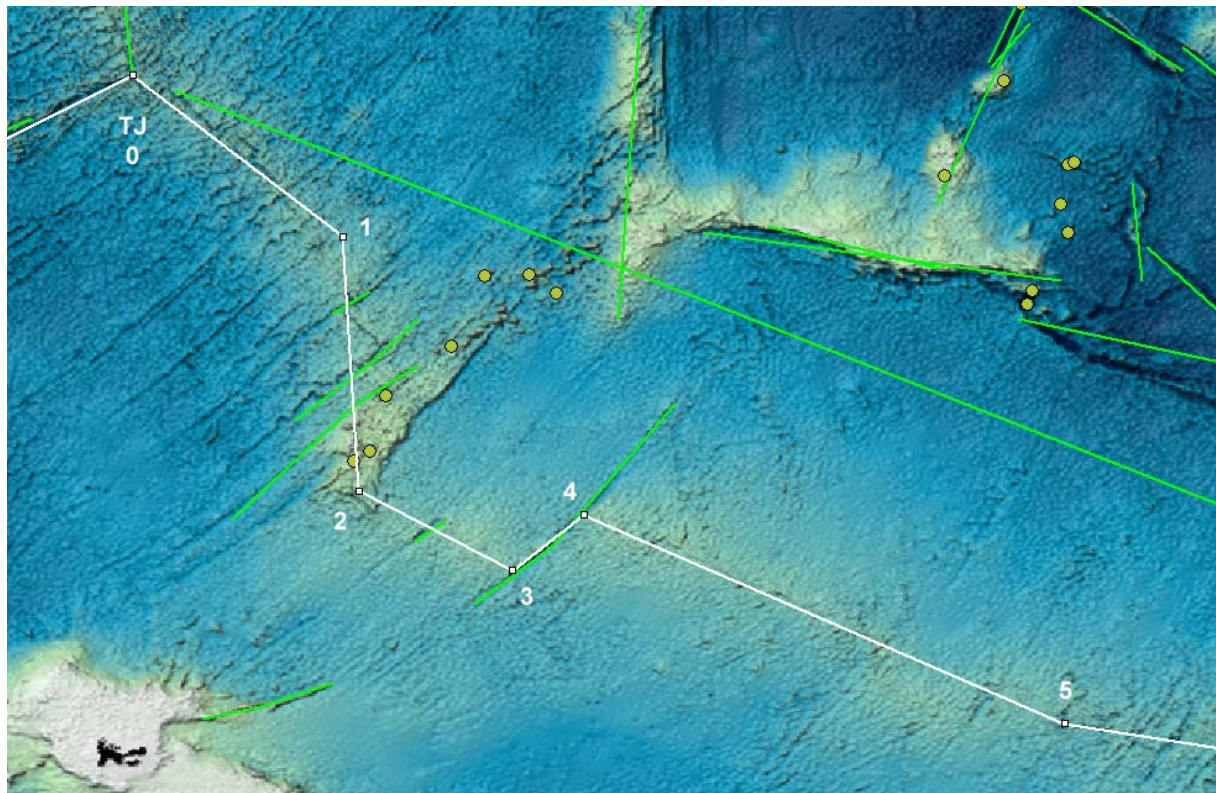
Proposal to SCUFN:

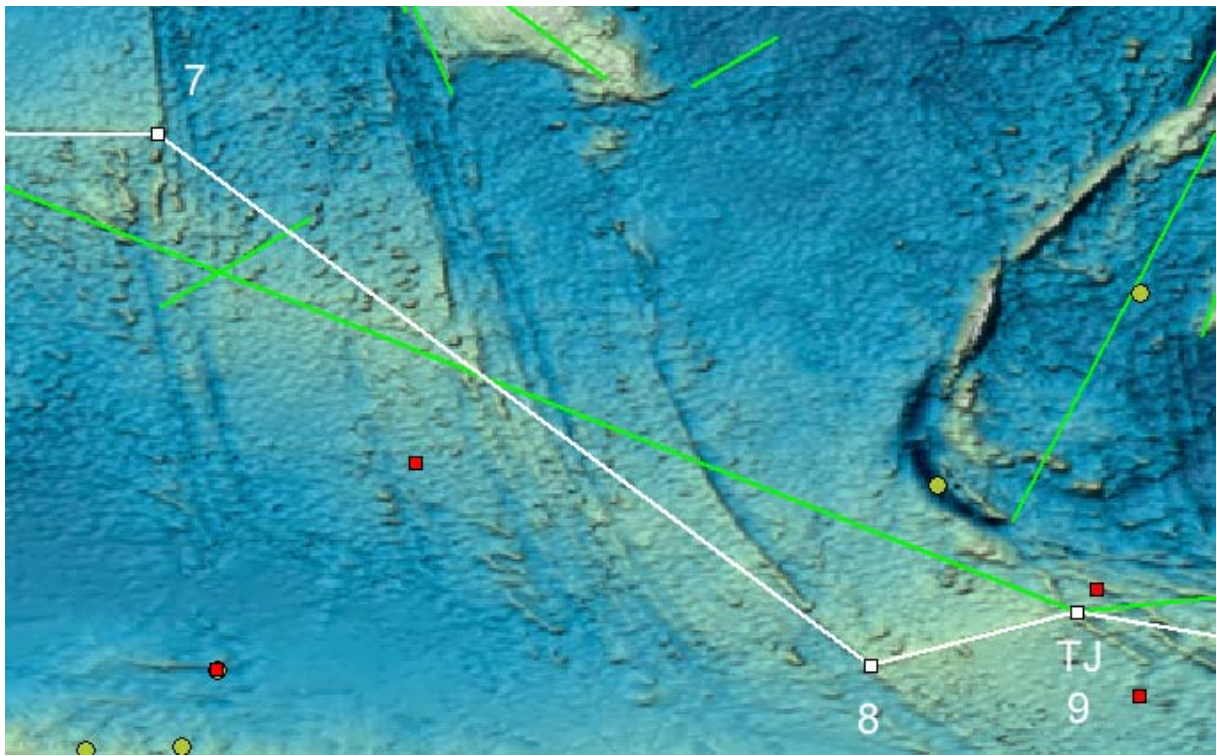
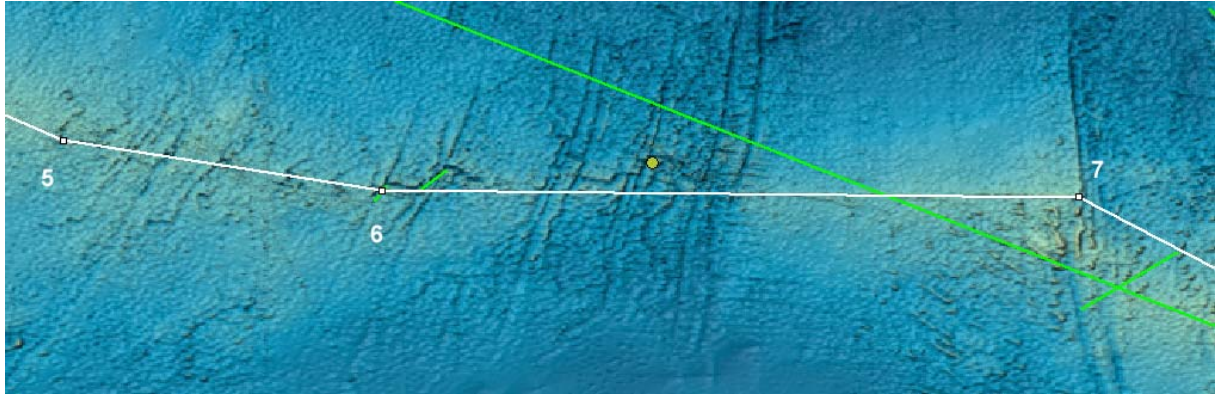
New position in SCUFN:

0	25°30' S, 70°00' E	← Triple Junction (ref.1)
1	31°06' S, 77°23' E	(existing position in SCUFN)
2	40°02' S, 77°56' E	
3	42°50' S, 83°19' E	
4	40°53' S, 85°47' E	
5	48°12' S, 102°36' E	
6	50°00' S, 114°09' E	
7	50°17' S, 139°28' E	
8	62°45' S, 156°11' E	
9	61°30' S, 161°00' E	← Triple Junction (ref.2)
		(existing position in SCUFN)

ref.1: Triple Junction of antarctic, somalia and indian-australian plate. Plates are separated by 'Southwest Indian Ridge' (SCUFN feature key 1590: proposal 33) and 'Central Indian Ridge' (SCUFN feature key 285).

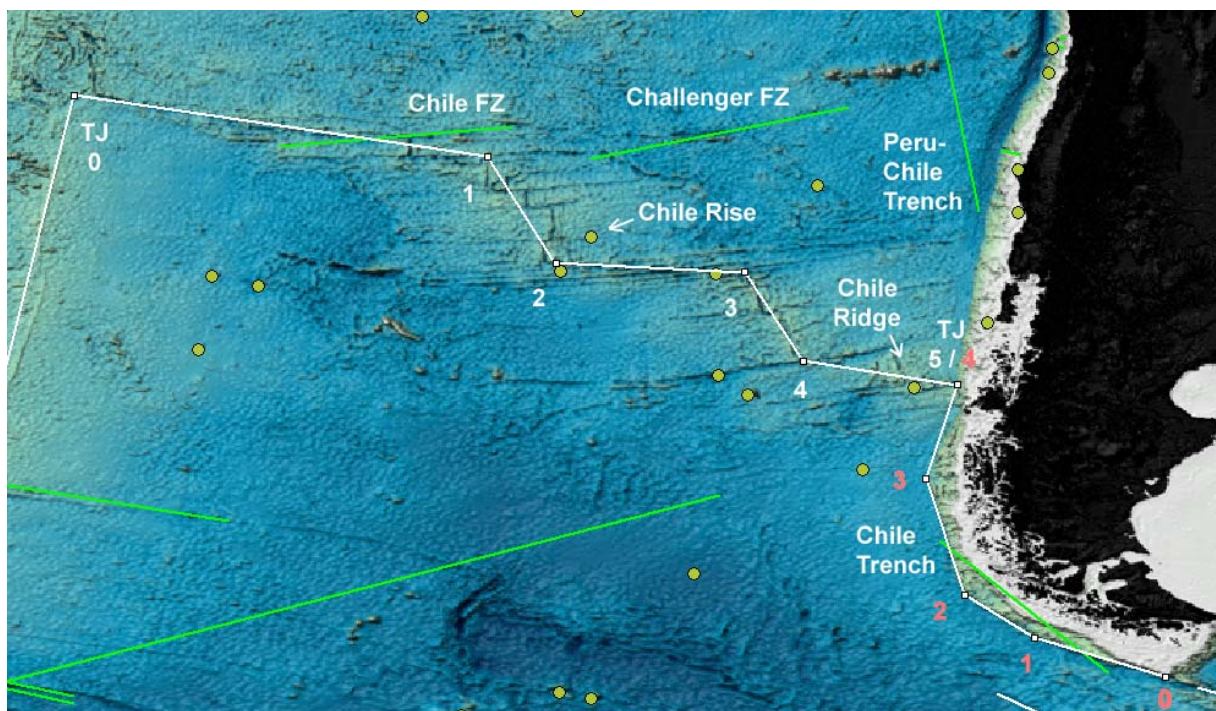
ref.2: Triple Junction of indian-australian plate, antarctic plate and pacific plate. Plates are separated by 'Pacific-Antarctic Ridge' (SCUFN feature key 1234: see proposal 32) and 'East Pacific Rise' (SCUFN feature key 469) .









Proposal (35) for changes in SCUFN

Features handled in this proposal:
310, Chile Ridge
312, Chile Trench



Grid: ETOPO2

-   **New feature coordinates**
(Points, lines, polygons)

-   **Feature in SCUFN**
(Points, lines, polygons)
- **Feature in CGA (only points)**

Feature Name: Chile
Generic Term: Ridge
B-8 Feature Key: 310
Reason: Geometric description as line recommended;
Actual only one position: 45°50', 77°30' W

Proposal to SCUFN:

New position in SCUFN:

0	34°30' S, 110°00' W	← Triple Junction (ref.1)
1	36°52' S, 94°01' W	
2	41°00' S, 91°25' W	
3	41°22' S, 84°01' W	
4	44°47' S, 81°47' W	
5	45°45' S, 75°52' W	← Triple Junction (ref.2)

ref.1: Triple Junction of Pacific, Nazca and Antarctic Plate. Plates are separated by SCUFN feature 'Pacific-Antarctic Ridge' (key 1234: see proposal 32) and 'East Pacific Rise' (key 469).

ref.2: Triple Junction of South American, Antarctic and Nazca Plate. Plates are separated by SCUFN feature 'Chile Trench' (key 312) and 'Peru-Chile Trench' (key 1280) .

Feature Name: Chile
Generic Term: Trench
B-8 Feature Key: 312
Reason: More coordinates for line feature needed.

Proposal to SCUFN:

New position in SCUFN:

0	56°59' S, 67°47' W	
1	55°28' S, 72°51' W	
2	53°50' S, 75°33' W	
3	49°04' S, 76°52' W	
4	45°45' S, 75°52' W	← Triple Junction (see ref.2 above)

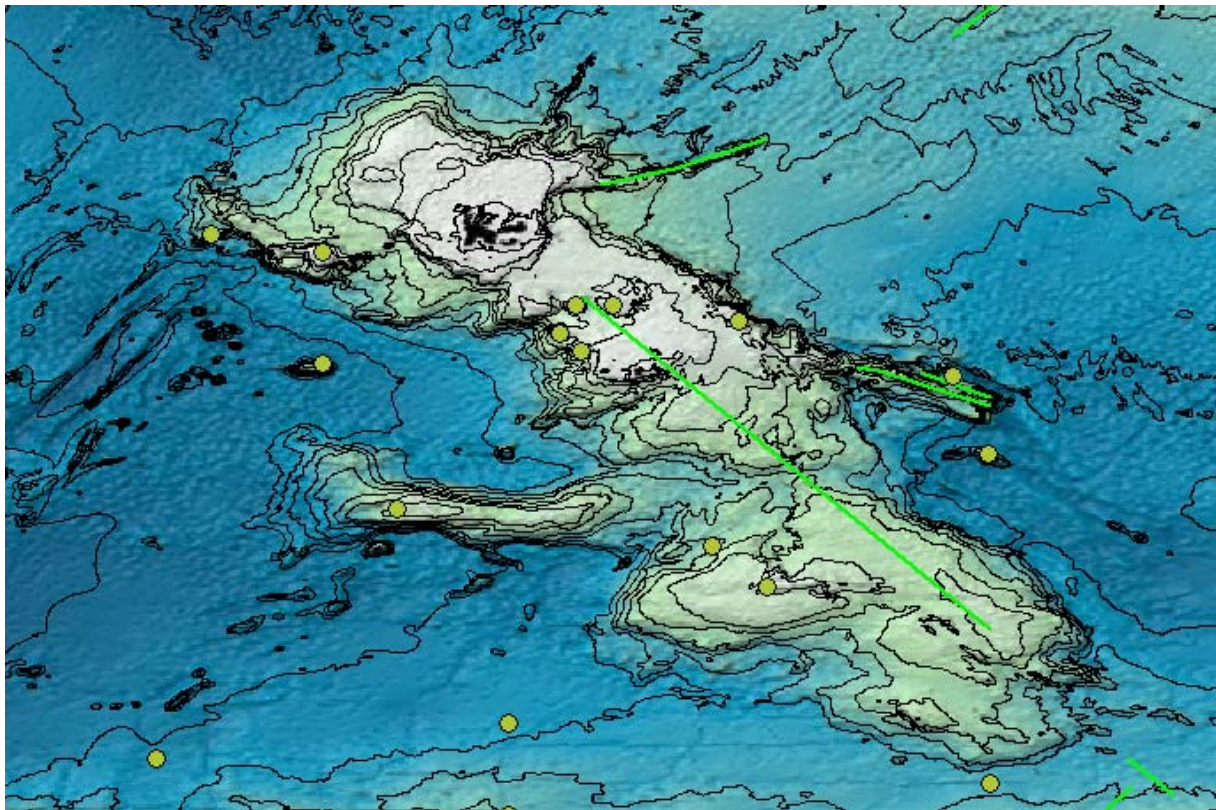
Ralf Krocke
Van-Ronzelen-Straße 2
27568 Bremerhaven - Germany



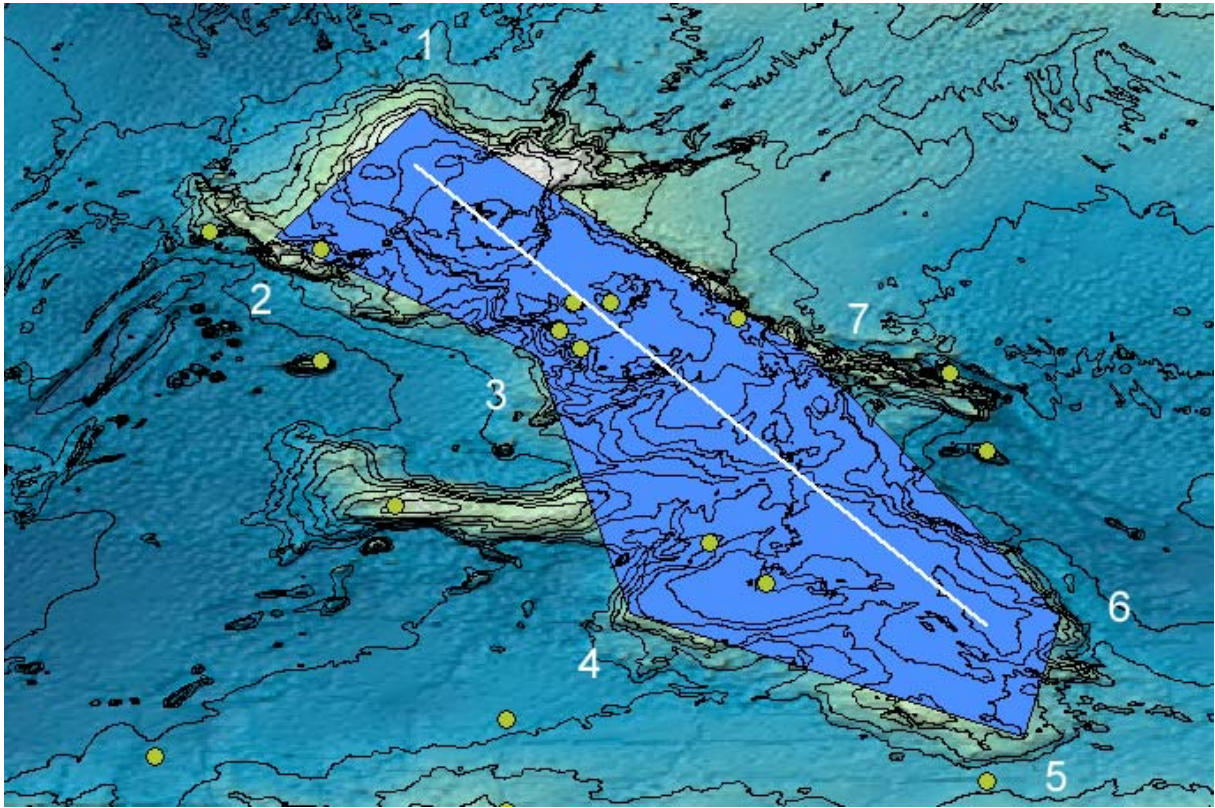
Bremerhaven, March 2008

Proposal (36) for changes in SCUFN

Features handled in this proposal:
827, Kerguelen Plateau



Grid: ETOPO2; Isolines: GEBCO



Grid: ETOPO2; Isolines: GEBCO

Feature Name: Kerguelen
 Generic Term: Plateau
 B-8 Feature Key: 827
 Reason: Geometric description as closed polygon recommended

Proposal to SCUFN:

New positions in SCUFN: As closed polygon:

46°00' S, 67°40' E |
 49°30' S, 63°45' E |
 52°40' S, 70°50' E |
 59°40' S, 73°20' E |
 63°00' S, 84°00' E |
 59°45' S, 85°00' E |
 52°40' S, 78°15' E |
 46°00' S, 67°40' E

← list 1st position twice
 to indicate a closed polygon



Ralf Krocker
Van-Ronzelen-Straße 2
27568 Bremerhaven - Germany



Bremerhaven, March 2008

Additional proposals for changes in SCUFN

Additions and comments to “September 2007 version of the Undersea Feature Names Gazetteer file” (received from Pauline Weatherall):

1. Missing hemisphere information

18. Kaula Seamount Lat - 15°14.8' - hemisphere information is missing for latitude values.

19. Kaula Seamount Lon - 50°24'.2 – East/West information is missing for longitude values.

⇒ Comment: Hemisphere information is part of SCUFN (but may be not in export files).

2. Additional duplicate feature names in B-8:

Ewing Seamount (521), (522)

Kaula Seamount (1), (3841)

Wenzel Seamount (3353), (3849)

3. Miscellaneous

Neumayer Canyon are the co-ordinates correct?

⇒ Comment: Coordinates have been corrected: see proposal (12)

Pegas Guyot (3835) ⇒ Comment: wrong latitude: 150° 35' N

4. The following features appear to have their co-ordinates in the wrong order for plotting (these are additions to the list produced previously):

Aleutian Trench (35)

Bob Fisher Ridge (2923)

John Harrison Ridge (623)

5. The following features may need additional points to define their shape when plotted (these are additions to the list produced previously):

Following features have been corrected:

Baeyer Canyon	← proposal 14
Emerald Fracture Zone	← proposal 25
Fimbul Canyon	← proposal 14
Koppe Canyon	← proposal 11
Pacific-Antarctic Ridge	← proposal 32
South Scotia Ridge	← proposal 26
South Shetland Trough	← proposal 06

ADDITIONAL COMMENTS

SCUFN features which are not adopted in CGA:

(*) := submitted but not finally adopted

Akopov (*) Seamounts	
Bellinghausen (*) Basin	
Erebus (*) Fracture Zone	← proposal 32
Kort Seamount	
La Rose (*) Fracture Zone	← proposal 32
Le Géographe (*) Fracture Zone	← proposal 32
Le Petit Prince (*) Fracture Zone	← proposal 32
Le Renard (*) Fracture Zone	← proposal 32
Saint-Exupéry (*) Fracture Zone	← proposal 32
Terror (*) Fracture Zone	
Unnamed (*) Seamount	← proposal 22

Following generic terms of features registered in B-8 global wide are not valid following B-6:

Three features (proposals 02, 04, 32) south of 60°S are subject for changes.

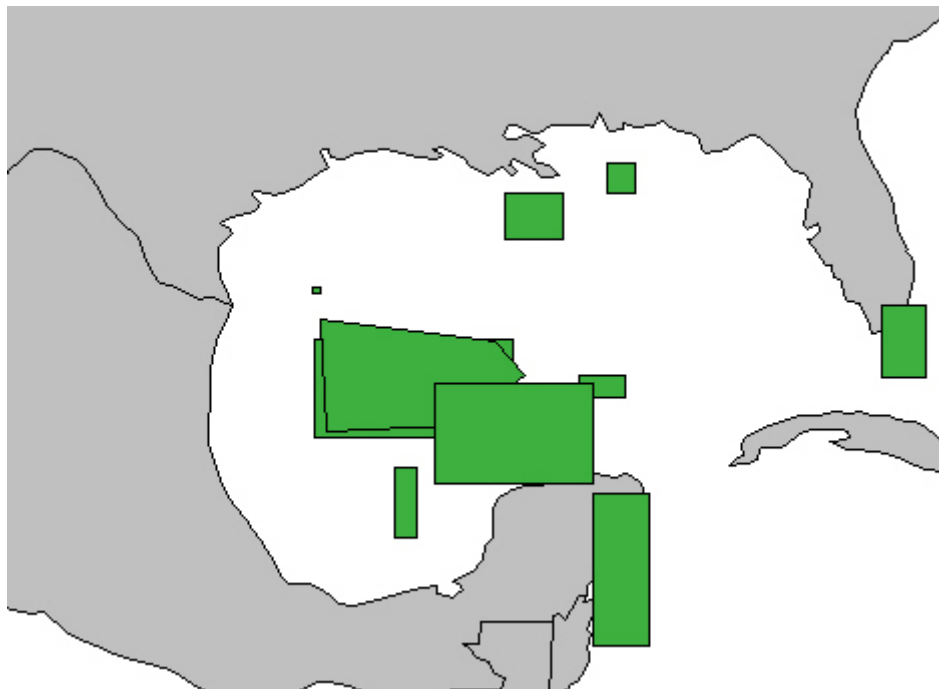
Aktivneset Continental Slope	
Alaska Plain	
Alger Canyons	
Amazon Canyons	
Amirante Banks	
Amundsen Ridges	← proposal 04
Animal Banks	
Annaba Canyons	
Australian-Antarctic Discordance	
Baja California Seamount Province	

Bejaia Canyons
Britannia Guyots
Brooks Banks
Challenger Deep
Dellwood Knolls
Diamantina (East) Zone
Eltanin Fracture Zone System ← proposal 31
Emden Deep
Fairweather Ground
Faroe-Shetland Channel
Flemish Cap
Flemish Pass
Frederick Reefs
French Frigate Shoals
Galite Channel
Gascoyne Plain
Geisha Guyots
Genova Canyons
Gorda Ridges
Grand Banks of Newfoundland Banks
Guadalupe (*) Arrugado
Guilcher
Gulf of Alaska Seamount Province
Horizon Channel
Horizon Deep
Hunter Channel
Hydrate Knolls
Imarssuak Channel
Independence Knolls
Indispensable Reefs
Japanese (*) Guyots
Kenn Reefs
Kocebu Guyots
Laurentian Channel
Les Sorelles Reefs
Mallorca Channel
Malta Channel
Marcus-Wake Seamount Group
Mascarene Plain
Maury Channel
Meloria Shoals
Minerva Reefs
Monaco Deep
Mornington Channel
Mukluk Channel
Northwest Atlantic Mid-Ocean Channel
NP-28 (*) Channel
Porcupine Seabight
Portlock Reefs
Raukumara Plain
Revere Channel

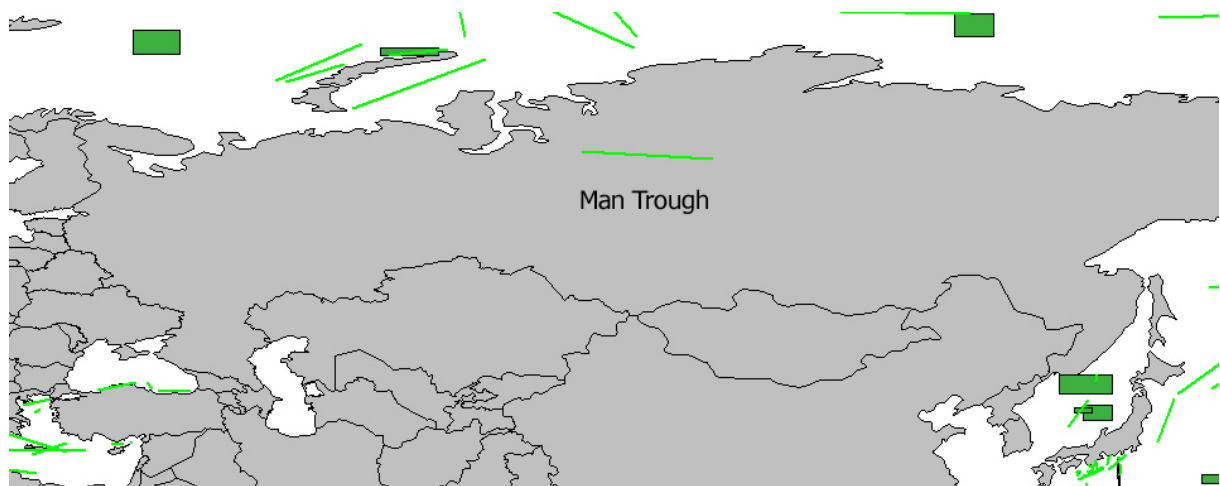
Rowley Reefs
Sahul Banks
São Paulo Channel
Sardino-Balearic Plain
Scholl Deep
Seamap Channel
Sedna Ridges
Sermilik Deep
Sigsbee Deep
Skerki Channel
Skikda Canyons
Spartivento Canyons
Storfjord Deep
Surveyor Channel
Taiwan Banks
Thomas Guyots
Tregrosse Reefs
Træna Deep
Vada Shoals
Victor Hensen Knolls
Whales Bay Deeps
Wrecks Reefs

← proposal 02

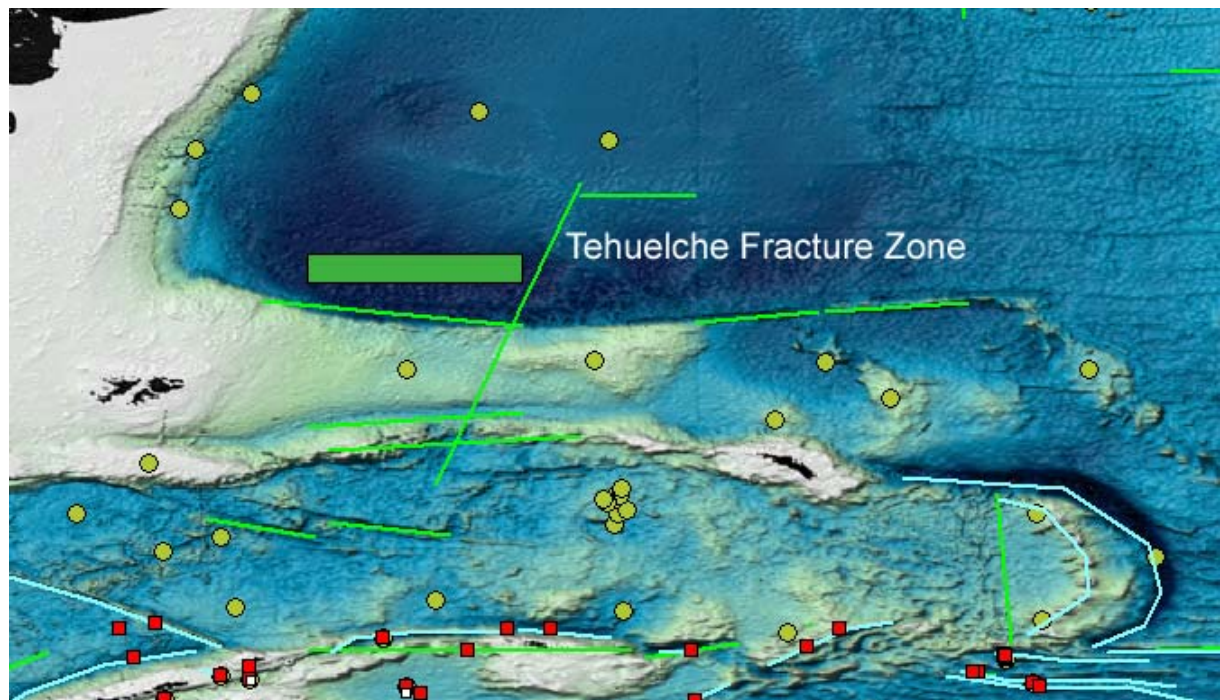
Features with inconsistencies in topology as examples:



Mexico Basin (1032) and Sigsbee Abyssal Plain (3700) covers the same area.



Man Trough (3760) is located in terrestrial area



Tehuelche Fracture Zone (1669) is located improperly (crosses other structures).
(red squares are CGA features, the others SCUFN features)

Nansen Basin (1111) has no extension:

84°N, 20°E |
84°N, 90°E

Agulhas Basin (21) has no extension:

46°S, 10°E |
46°S, 30°E