

**UNDERSEA FEATURE NAME PROPOSAL**

**Ocean or Sea:** **West Pacific Ocean**

**Name proposed:** **Gaori Tablemount**

**Coordinates:** A - of midpoint or summit: Lat. **12°50'N**, Long. **156°50'E**

**106** kilometres in **W (272°)** direction from **Zantonsky Smt**

**Description** (kind of feature): **Tablemount**

**Identifying or categorizing characteristics** (shape, dimensions, total relief, least depth, steepness, etc.):

**Gaori Tablemount has a flat summit at a minimum depth of 1,400 m, with an overall relief of approximately 4,600 m when the base of this feature is defined by the 6,000 m isobath. The diameter of the base is about 100 km by 90 km, with an average slope angle of about 10°.**

**Associated features:** **an unnamed seamount province in the west-central Pacific Ocean**

**Chart reference:**

**Not shown but within area covered by chart No. UKHO 4506 (scale 1:3.5mln).**

**Reason for choice of name** (if a person, state how associated with the feature to be named):

**The feature has a shape similar to that of a ray, which is called “gaori” in Korean language. Ray is popular as a Korean traditional food ingredient with various recipes.**

**Discovery facts:**

**Date** **June 14-26, 2000** by (individuals or ship): **R/V Onnuri**

**By means of (equipment):** **Multibeam Echosounder (SeaBeam2000)**

**Navigation used:** **DGPS with KonMap system**

**Estimated positional accuracy in nautical miles:**  **$\pm 0.001$  miles**

**Description of survey** (track spacing, line crossing, grid network, etc.):

**Line-spacing of the survey tracks was adjusted to ensure 100% multibeam coverage.**

**Nature and repository of other survey activities** (dredge samples, cores, magnetics, gravity, photographs, etc.):

**Seismic, magnetic, and gravity data were also collected**

**Supporting material** (enclose, if possible, a sketch map of the survey area, profiles of the features, etc., with reference to prior publication, if any):

**See attached bathymetric map, survey track chart, and 2-D/3-D image maps**

**Submitted by:** **Korea Committee on Marine Geographical Names, Republic of Korea**

**Date:** **August 24, 2009**

**Address:** **195 Seohaero, Jung-gu, Incheon 400-800, Republic of Korea**

**Concurred in by** (if applicable):

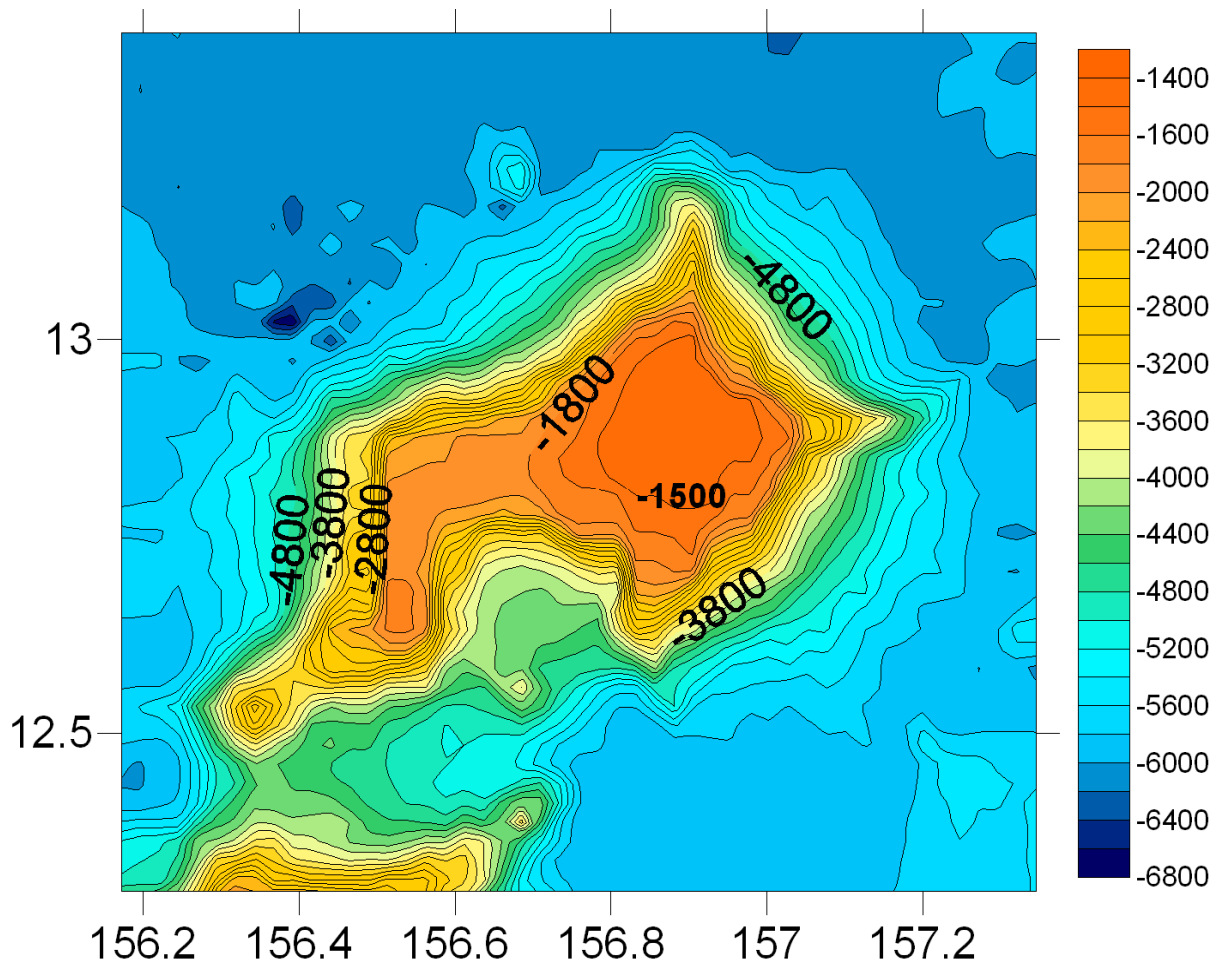
**National Authority** (if any): **Korea Hydrographic and Oceanographic Administration**

**Address:** **195 Seohaero, Jung-gu, Incheon 400-800, Republic of Korea**

**Tel:** **+82-32-885-3825**

**Fax:** **+82-32-885-3088**

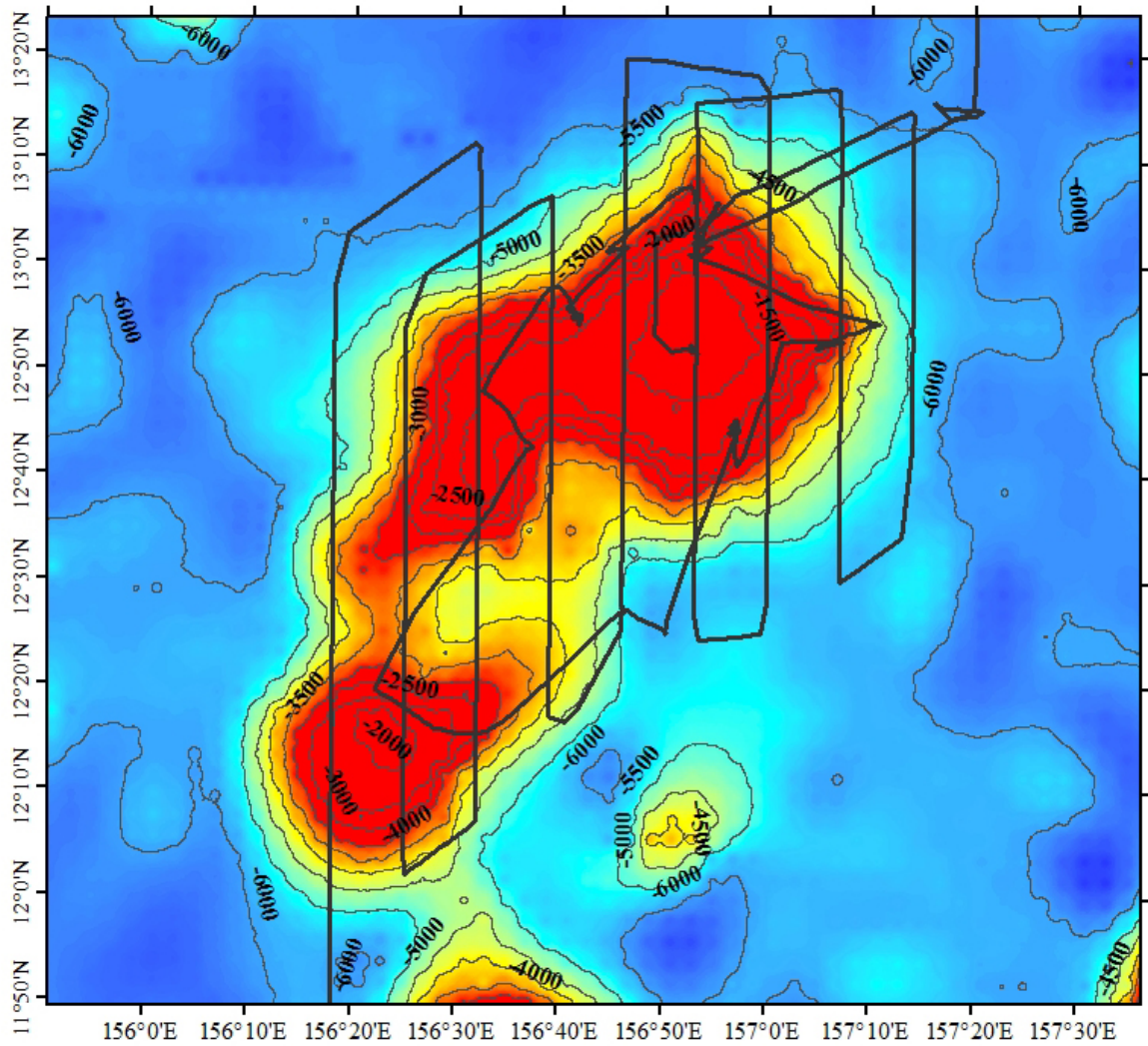
# Gaori Tablemount



2-D Bathymetric Contour Map of Gaori Tablemount

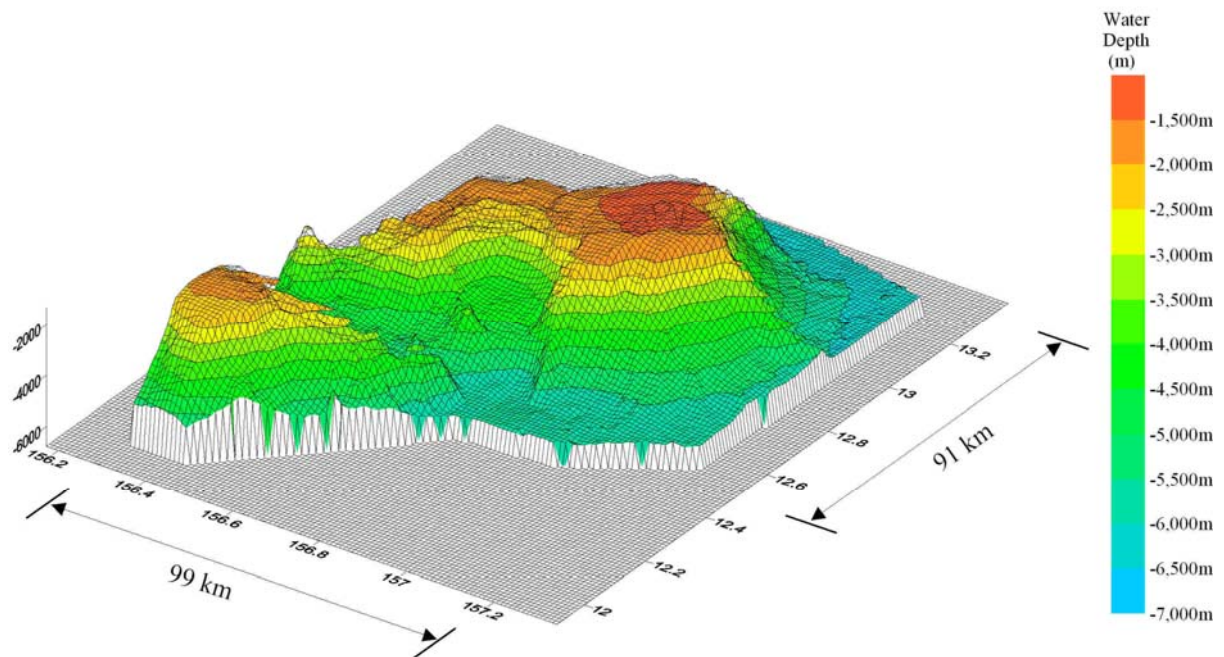
Contour Interval = 200 meters

## Gaori Tablemount



Multibeam survey tracklines for Gaori Tablemount

## Gaori Tablemount



3-D topographic map of Gaori Tablemount