

**UNDERSEA FEATURE NAME PROPOSAL**

Ocean or Sea: **West Pacific Ocean**

Name proposed: **Geobukseon Tablemount**

Coordinates: A - of midpoint or summit: Lat. **13°55'N**, Long. **157°35'E**

**125** kilometres in **NNW (347°)** direction from **Zantonsky Smt**

Description (kind of feature): **Tablemount**

Identifying or categorizing characteristics (shape, dimensions, total relief, least depth, steepness, etc.):

**Geobukseon Tablemount has a flat summit at a depth of approximately 1,200 m and an overall vertical relief of about 3,600 m using the defined base as 5,800 m. The diameter of the base is about 75 km by 65 km. The overall slope angle averages about 10°**

Associated features: **an unnamed seamount province in the west-central Pacific Ocean**

Chart reference:

**Not shown but within area covered by chart No. UKHO 4506 (scale 1:3.5mln).**

Reason for choice of name (if a person, state how associated with the feature to be named):

**The feature has a shape similar to that of a turtle, which is called “geobuk” in the Korean language. Geobukseon is the Korean word for "turtle ship." GEObUKSEON was the first iron ship produced Korea by General Lee Sun-Shin (1545-1598) in 1592, during the Joseon Dynasty. Recognized for its scientific and functional excellence, scale models of GEObUKSEON are exhibited in maritime history museums throughout the world , in countries such as China, Germany, France, Canada, and the UK’s Maritime Naval Academy Museum, in addition to Korean national and local museums.**

**Discovery facts:**

**Date** **June 14-26, 2000** by (individuals or ship): **R/V Onnuri**

**By means of (equipment):** **Multibeam Echosounder (SeaBeam2000)**

**Navigation used:** **DGPS with KonMap system**

**Estimated positional accuracy in nautical miles:**  **$\pm 0.001$  miles**

**Description of survey** (track spacing, line crossing, grid network, etc.):

**The line spacing of survey tracks was adjusted to ensure 100% multibeam coverage.**

**Nature and repository of other survey activities** (dredge samples, cores, magnetics, gravity, photographs, etc.):

**Seismic, magnetic, and gravity data were also collected**

**Supporting material** (enclose, if possible, a sketch map of the survey area, profiles of the features, etc., with reference to prior publication, if any):

**See attached bathymetric map, survey track chart, and 2-D/3-D image maps**

**Submitted by:** **Korea Committee on Marine Geographical Names, Republic of Korea**

**Date:** **August 24, 2009**

**Address:** **195 Seohaero, Jung-gu, Incheon 400-800, Republic of Korea**

**Concurred in by** (if applicable):

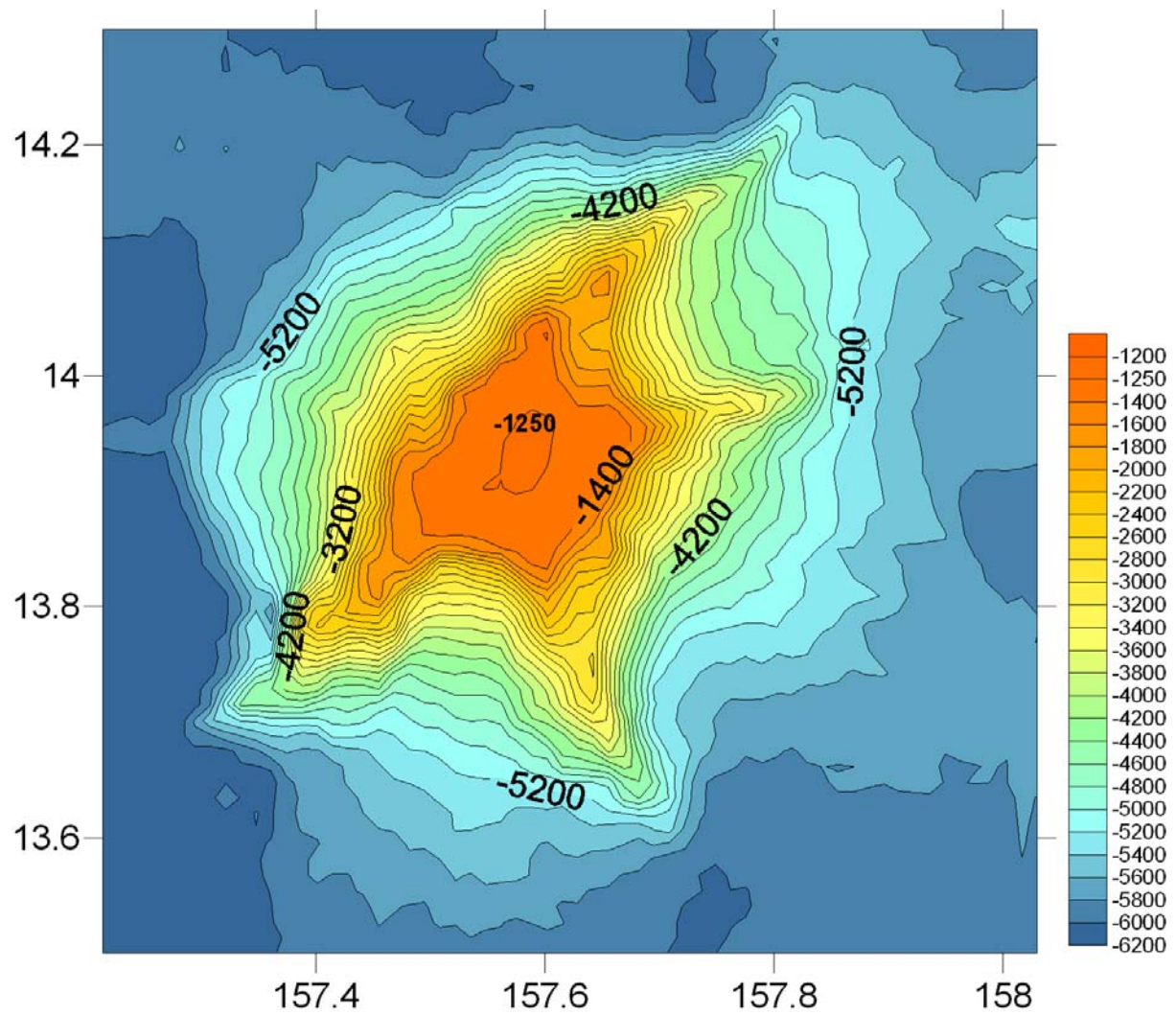
**National Authority** (if any): **Korea Hydrographic and Oceanographic Administration**

**Address:** **195 Seohaero, Jung-gu, Incheon 400-800, Republic of Korea**

**Tel:** **+82-32-885-3825**

**Fax:** **+82-32-885-3088**

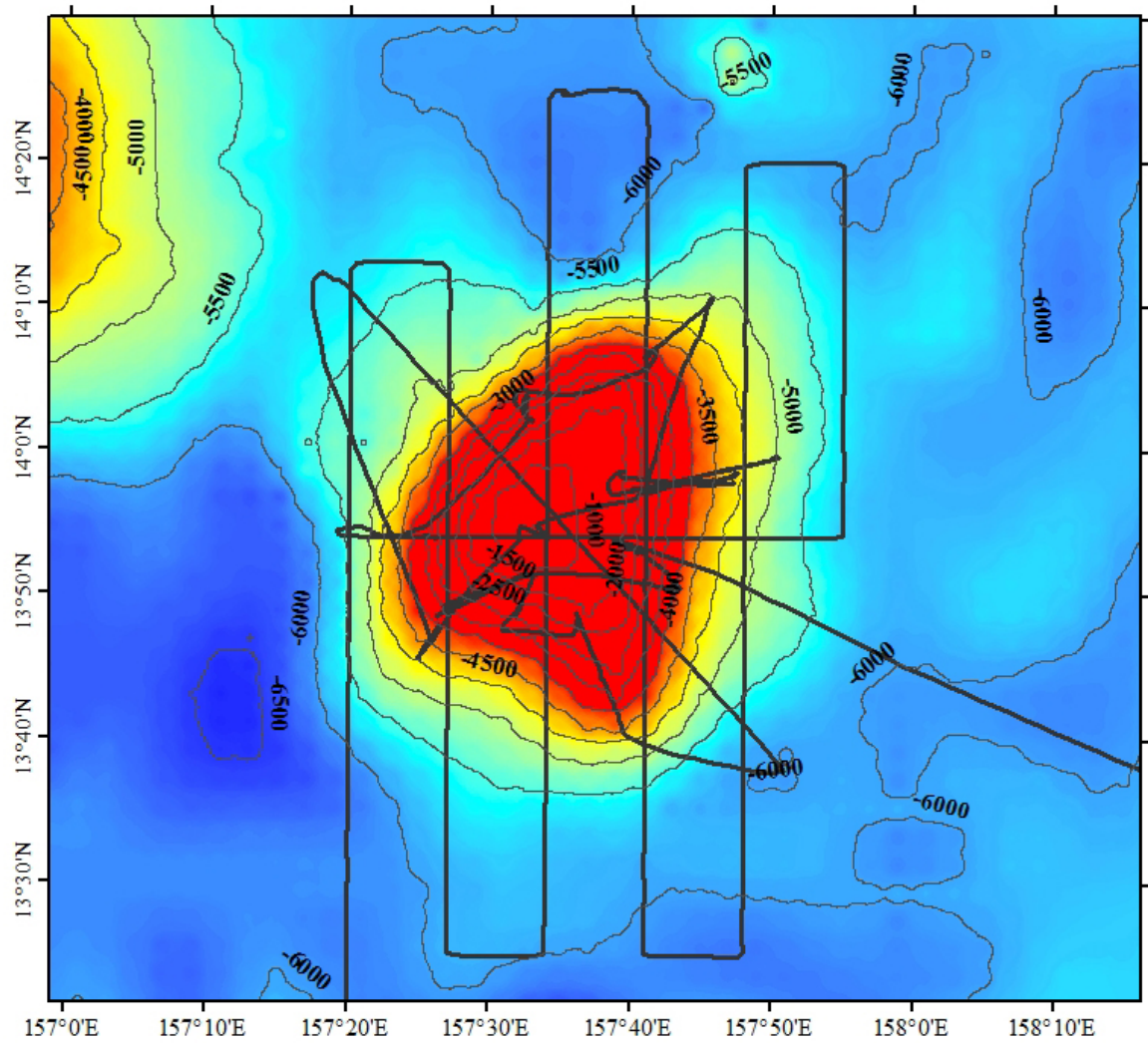
### Geobukseon Tablemount



**2-D Bathymetric Contour Map of Geobukseon Tablemount**

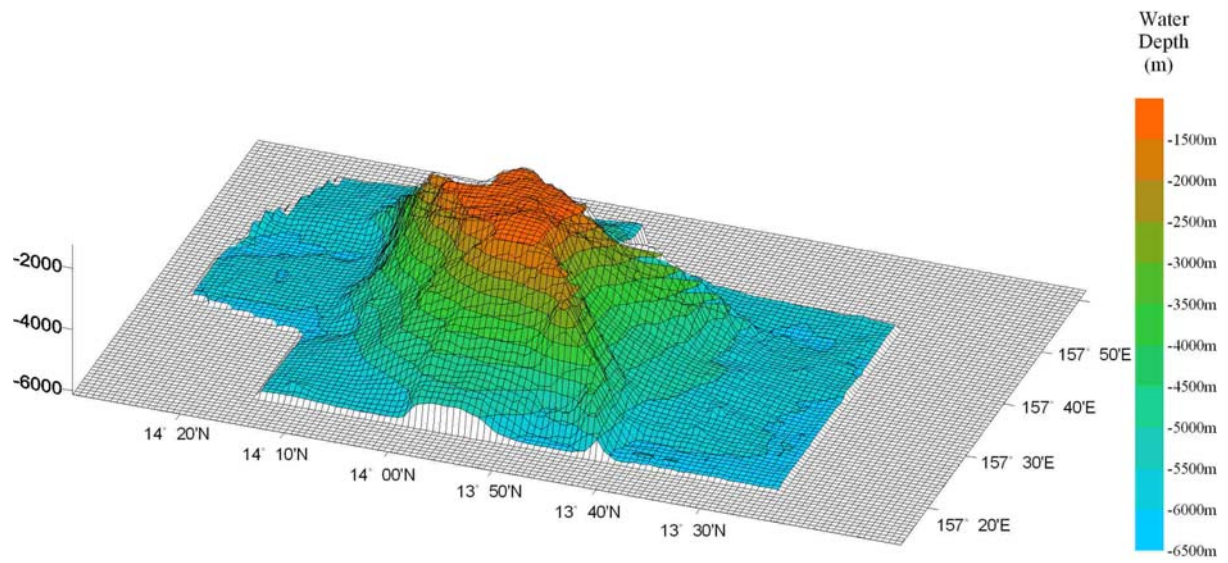
**Contour Interval = 200 meters**

## Geobukseon Tablemount



Multibeam survey tracklines for Geobukseon Tablemount

## Geobukseon Tablemount



**3-D topographic map of Geobukseon Tablemount**