

UNDERSEA FEATURE NAME PROPOSAL

Ocean or Sea: **West Pacific Ocean**

Name proposed: **Arirang Tablemount**

Coordinates: A - of midpoint or summit: Lat. **11°50'N**, Long. **157°40'E**

110 kilometres in **S (189°)** direction from **Zantonsky Seamount**

Description (kind of feature): **Tablemount**

Identifying or categorizing characteristics (shape, dimensions, total relief, least depth, steepness, etc.):

Arirang Tablemount has a flat summit with a minimum depth of approximately 1,300 m and a relief of about 4,200 m using the 5,500 m isobath as its base. The dimensions of the base are about 40km by 35 km, and the slope angle averages about 10°.

Associated features: **an unnamed seamount province in the west-central Pacific Ocean**

Chart reference:

Not shown but within area covered by chart No. UKHO 4506 (scale 1:3.5mln).

Reason for choice of name (if a person, state how associated with the feature to be named):

ARIRANG is the name of the first Korean Multipurpose Satellite (KOMSAT), launched in 1999. The Ocean Scanning Multispectral Imaging system is aboard the satellite, which has made significant contributions to the ocean observation technology field.

Discovery facts:

Date **June 14-28, 2001** by (individuals or ship): **R/V Onnuri**

By means of (equipment): **Multibeam Echosounder (SeaBeam2000)**

Navigation used: **DGPS with KonMap system**

Estimated positional accuracy in nautical miles: **± 0.001 miles**

Description of survey (track spacing, line crossing, grid network, etc.):

Line-spacing of the survey tracks was adjusted to ensure 100% multibeam coverage.

Nature and repository of other survey activities (dredge samples, cores, magnetics, gravity, photographs, etc.):

Seismic, magnetic, and gravity data were also collected

Supporting material (enclose, if possible, a sketch map of the survey area, profiles of the features, etc., with reference to prior publication, if any):

See attached bathymetric map, survey track chart, and 2-D/3-D image maps

Submitted by: **Korea Committee on Marine Geographical Names, Republic of Korea**

Date: **August 24, 2009**

Address: **195 Seohaero, Jung-gu, Incheon 400-800, Republic of Korea**

Concurred in by (if applicable):

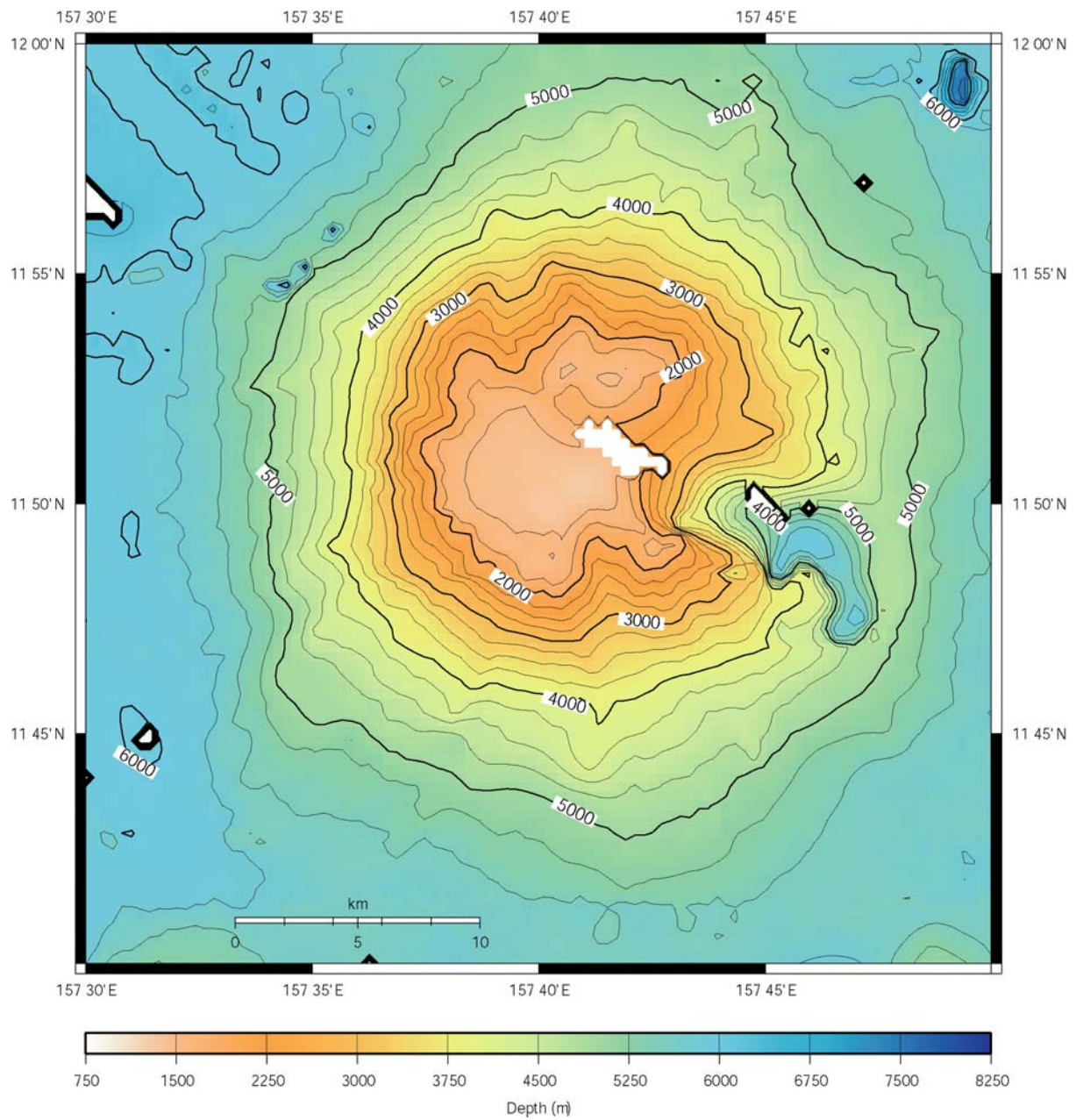
National Authority (if any): **Korea Hydrographic and Oceanographic Administration**

Address: **195 Seohaero, Jung-gu, Incheon 400-800, Republic of Korea**

Tel: **+82-32-885-3825**

Fax: **+82-32-885-3088**

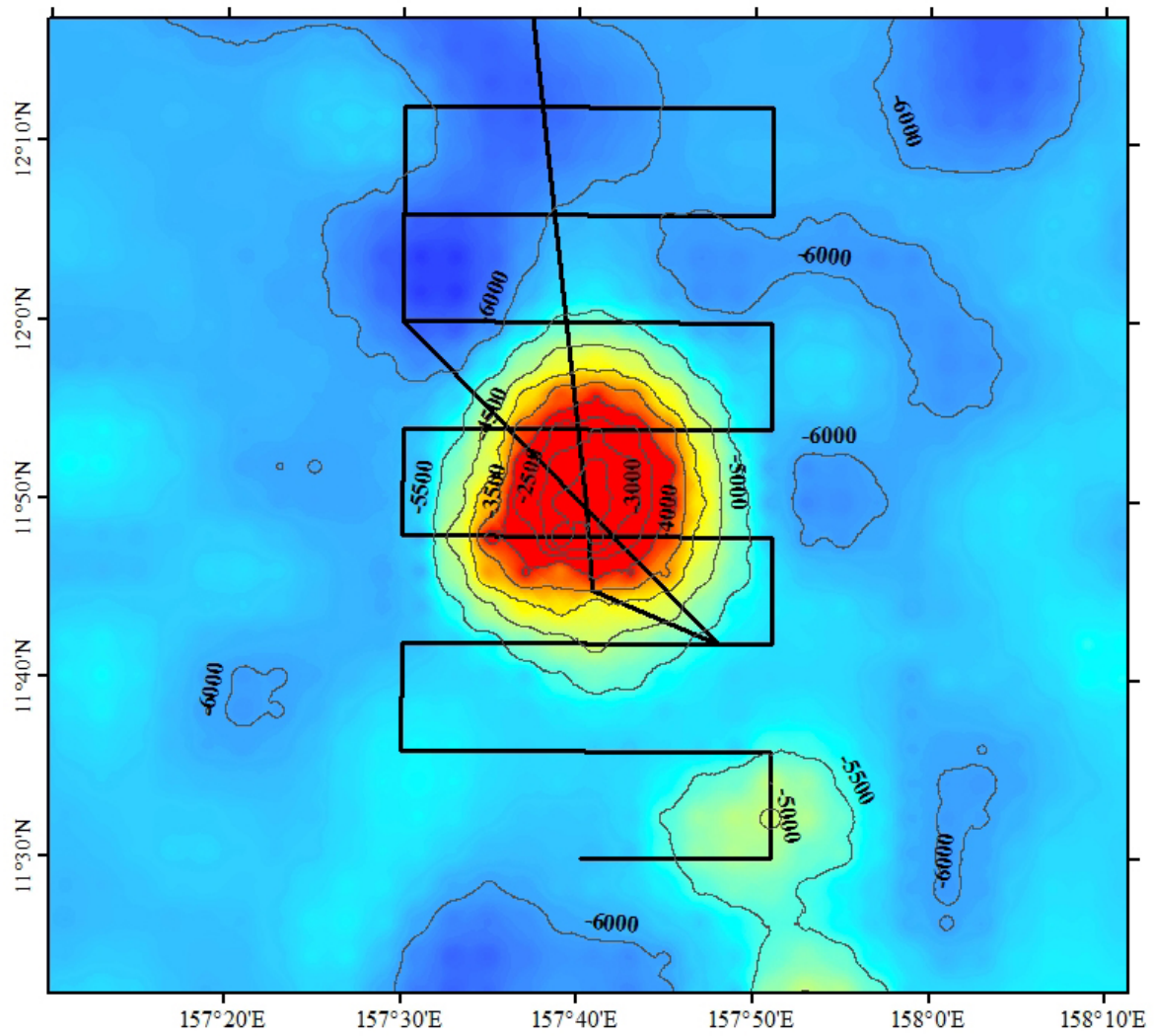
Arirang Tablemount



2-D Bathymetric Contour Map of Arirang Tablemount

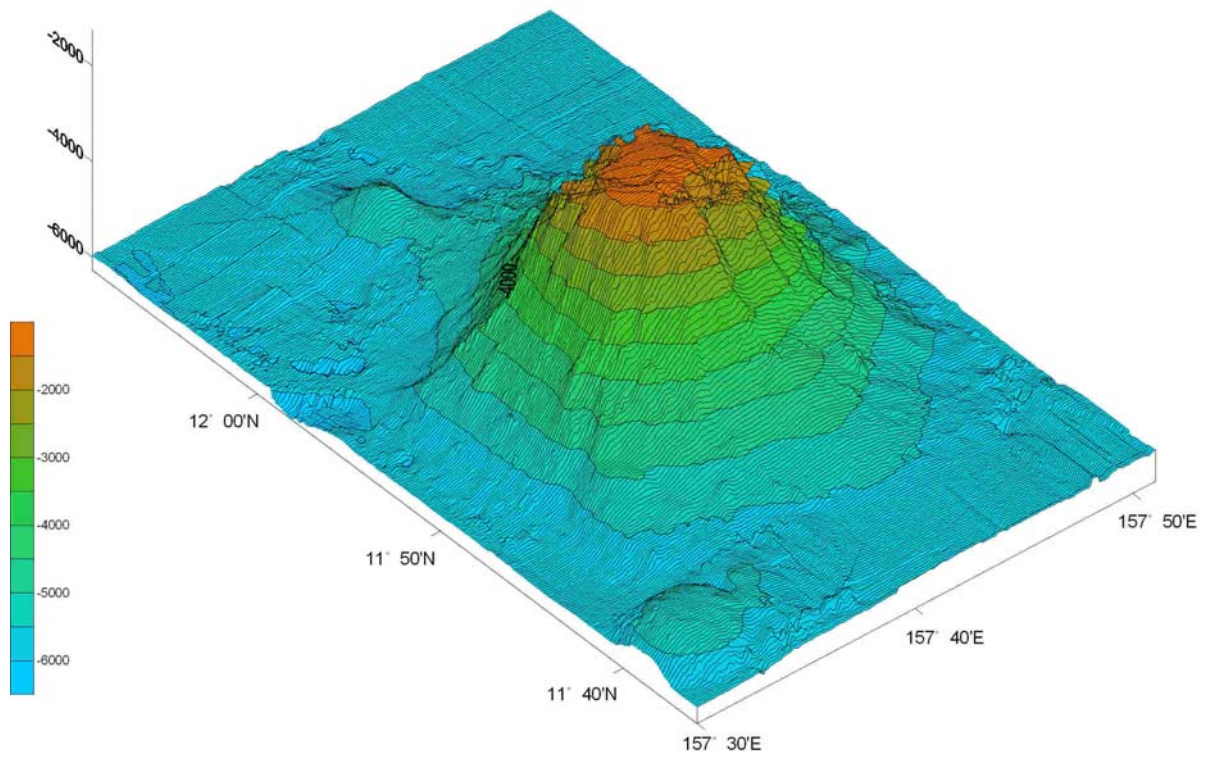
Contour interval = 250 m

Arirang Tablemount



Multibeam survey tracklines for Arirang Tablemount

Arirang Tablemount



3-D Bathymetric Contour Map of Arirang Tablemount