

UNDERSEA FEATURE NAME PROPOSAL

(See NOTE overleaf)

Ocean or Sea: **West Pacific Ocean**

Name proposed: **Changpogo Seamount**

Coordinates: A - of midpoint or summit: Lat. **15°20'N**, Long. **158°45'E**

172 kilometres in **WWS (258°)** direction from **Zubov Smt**

Description (kind of feature): **Seamount**

Identifying or categorizing characteristics (shape, dimensions, total relief, least depth, steepness, etc.):

Changpogo Seamount has a peak with a minimum depth of 1,205m, and a total relief of about 4,295m when measured from the base which is defined as the 5,500 m isobath. The diameter of the base is about 40km and the slope angle is about 11°

Associated features: **An unnamed seamount province in the western Pacific Ocean**

Chart reference:

Not shown but within area covered by chart No. UKHO 4506 (scale 1:3.5mln).

Reason for choice of name (if a person, state how associated with the feature to be named):

Changpogo, an important person during the Shilla dynasty (8th and 9th centuries C.E.), was a Korean that established the first maritime trading enterprise to Northeast Asia, an area encompassing Korea, China and Japan. Specifically, he established an East-West maritime trade route, connecting East Asia with India, along a route through Southeast Asia where Persian Arabian traders sailed, greatly expanding the international market for East Asian products. Changpogo is known as "king of the sea" in Korea. In addition, Changpogo also significantly contributed to marine science technology in enterprises such as shipbuilding and navigation techniques etc. through his prolific maritime activities.

Discovery facts:

Date **June 14-28, 2001** by (individuals or ship): **R/V Onnuri**
By means of (equipment): **Multibeam Echosounder (SeaBeam2000)**
Navigation used: **DGPS with KonMap system**
Estimated positional accuracy in nautical miles: **±0.001 miles**

Description of survey (track spacing, line crossing, grid network, etc.):
The line spacing of survey tracks was adjusted to ensure 100% multibeam coverage.

Nature and repository of other survey activities (dredge samples, cores, magnetics, gravity, photographs, etc.):
Seismic, magnetic, and gravity data were also collected

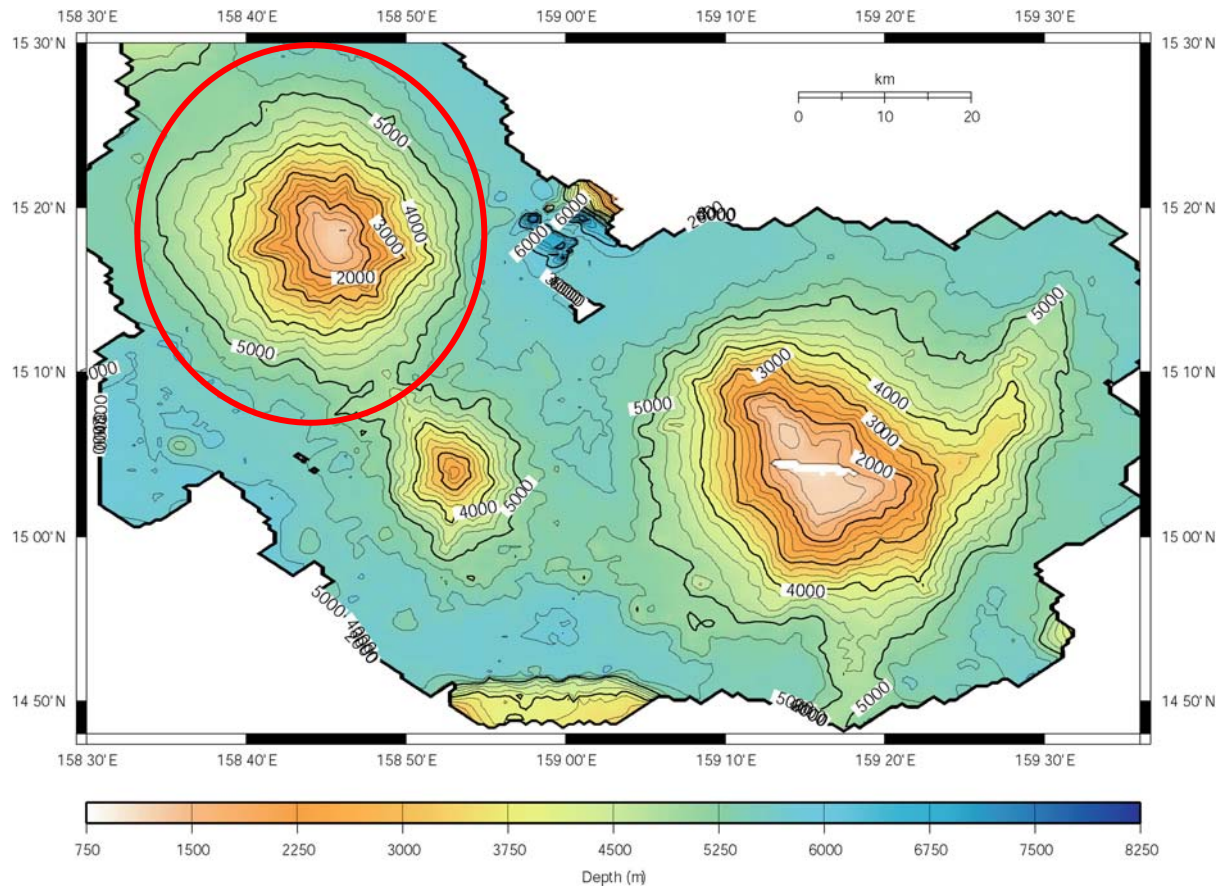
Supporting material (enclose, if possible, a sketch map of the survey area, profiles of the features, etc., with reference to prior publication, if any):
See attached bathymetric map, survey track chart, and 2-D/3-D image maps

Submitted by: **Korea Committee on Marine Geographical Names, Republic of Korea**
Date: **August 24, 2009**
Address: **195 Seohaero, Jung-gu, Incheon 400-800, Republic of Korea**

Concurred in by (if applicable):

National Authority (if any): **Korea Hydrographic and Oceanographic Administration**
Address: **195 Seohaero, Jung-gu, Incheon 400-800, Republic of Korea**
Tel: **+82-32-885-3825**
Fax: **+82-32-885-3088**

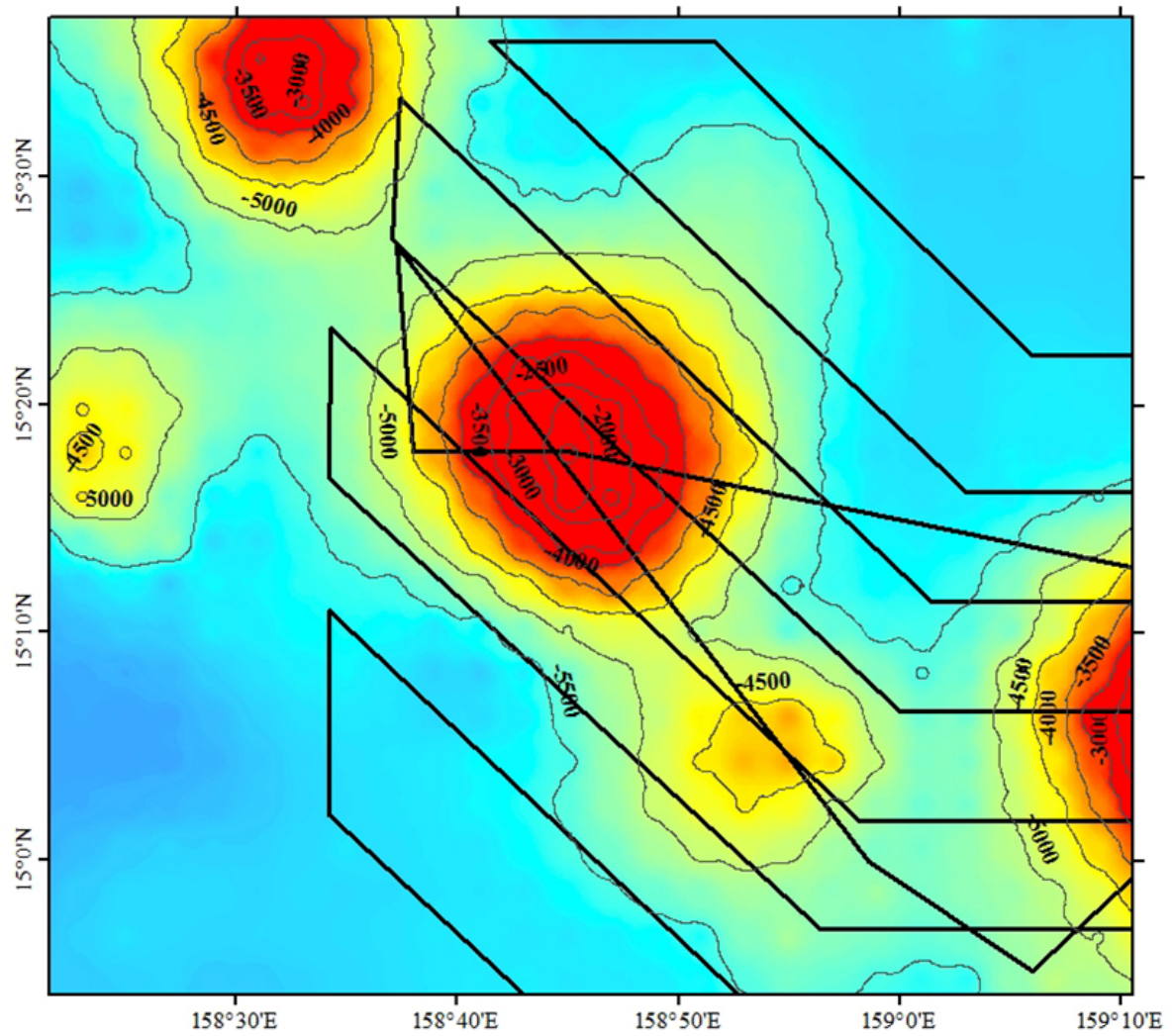
Changpogo Seamount



2-D Bathymetric Contour Map of Changpogo Seamount

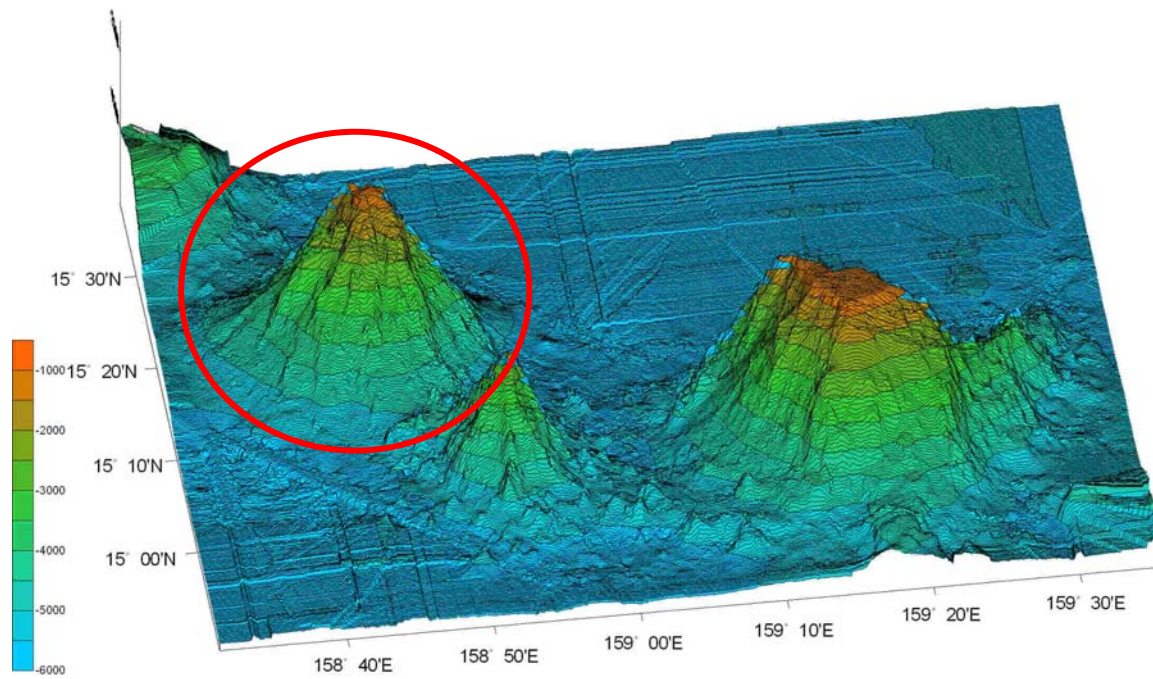
Contour Interval = 250 meters

Changpogo Seamount



Multibeam survey tracklines for Changpogo Seamount

Changpogo Seamount



3-D Bathymetric Contour Map of Changpogo Seamount