

INTERNATIONAL HYDROGRAPHIC ORGANIZATION	INTERGOVERNMENTAL OCEANOGRAPHIC COMMISSION (of UNESCO)
--	---

UNDERSEA FEATURE NAME PROPOSAL

(Sea NOTE overleaf)

Note: The boxes will expand as you fill the form.

Name Proposed:	Ogasawara Plateau	Ocean or Sea:	Northwest Pacific Ocean
-----------------------	-------------------	----------------------	-------------------------

Geometry that best defines the feature (Yes/No) :						
Point	Line	Polygon	Multiple points	Multiple lines*	Multiple polygons*	Combination of geometries*
		Yes				

* Geometry should be clearly distinguished when providing the coordinates below.

	Lat. (e.g. 63°32.6'N)	Long. (e.g. 046°21.3'W)
Coordinates:	26°00.0'N	143°11.0'E
	26°40.0'N	143°21.0'E
	27°00.0'N	143°47.0'E
	27°00.0'N	144°07.0'E
	26°48.0'N	144°25.0'E
	26°39.0'N	145°04.0'E
	26°30.0'N	145°40.0'E
	26°15.0'N	145°45.0'E
	26°07.0'N	146°00.0'E
	25°54.0'N	146°25.0'E
	26°22.0'N	147°05.0'E
	26°30.0'N	148°00.0'E
	26°30.0'N	148°10.0'E
	26°15.0'N	148°25.0'E
	26°05.0'N	148°20.0'E
	25°53.0'N	149°20.0'E
	25°42.0'N	149°10.0'E
	25°35.0'N	148°20.0'E
	25°25.0'N	147°50.0'E
	24°25.0'N	147°17.0'E
	24°25.0'N	147°13.0'E
	24°37.0'N	147°07.0'E
	24°38.0'N	147°00.0'E
	24°50.0'N	146°53.0'E
	25°15.0'N	147°02.0'E
	25°30.0'N	147°05.0'E
	25°37.0'N	146°25.0'E
	25°33.0'N	145°59.0'E
	25°25.0'N	145°22.0'E
	25°06.0'N	145°25.0'E
24°43.0'N	146°04.0'E	
24°23.0'N	146°07.0'E	
23°46.0'N	145°34.0'E	
23°40.0'N	145°20.0'E	
23°55.0'N	145°00.0'E	
23°25.0'N	145°15.0'E	
23°20.0'N	145°05.0'E	
23°48.0'N	144°35.0'E	
23°45.0'N	144°12.0'E	
24°46.0'N	143°17.0'E	
25°00.0'N	143°14.0'E	

Feature Description:	Maximum Depth:	8500 m	Steepness :	
	Minimum Depth :	380 m	Shape :	
	Total Relief :	8120 m	Dimension/Size :	620 km × 375 km

Associated Features:	The Ogasawara Plateau consists of the Ogasawara Rise, Yabe Seamount, Hanzawa Seamount, Katayama Seamount and Uda Spur.
-----------------------------	--

Chart/Map References:	Shown Named on Map/Chart:	6302,6726,1009,1004B
	Shown Unnamed on Map/Chart:	
	Within Area of Map/Chart:	

Reason for Choice of Name (if a person, state how associated with the feature to be named):	Named after the nearby archipelago of Ogasawara Islands.
--	--

Discovery Facts:	Discovery Date:	
	Discoverer (Individual, Ship):	

Supporting Survey Data, including Track Controls:	Date of Survey:	Apr., May., Sep., Nov. and Dec. 2001 Jan., Sep. and Dec. 2002 Oct. – Dec. 2003 Jan. 2004 Feb. 2005 Mar. and Apr. 2006
	Survey Ship:	The Japanese Survey Vessel "Takuyo" (2001, 2002, 2003, 2004, 2005 and 2006) The Japanese Survey Vessel "Shoyo" (2001, 2002 and 2006)
	Sounding Equipment:	Multibeam echo sounder SeaBeam 2112
	Type of Navigation:	GPS without Selective Availability
	Estimated Horizontal Accuracy (nm):	0.014 nm (26 m)
	Survey Track Spacing:	Less than 8 miles (3 miles on summit area)
	Supporting material can be submitted as Annex in analog or digital form.	

Proposer(s):	Name(s):	JCUFN
	Date:	08/09/10
	E-mail:	ohara@jodc.go.jp
	Organization and Address:	Hydrographic and Oceanographic Department, Japan Coast Guard Tsukiji 5-3-1, Chuo-ku, Tokyo, Japan
	Concurrer (name, e-mail, organization and address):	

Remarks:	<p>In the GEBCO gazetteer, the Ogasawara Rise, Yabe Seamount ("Plateau" in the gazetteer), Hanzawa Seamount, Katayama Seamount, and Uda Spur are used to designate the each distinct bathymetric feature in the region. However, a single name, the Ogasawara Plateau, has long been used to designate the features all together in the scientific literature. This issue was dealt with by SCUFN 19 in 2006, and SCUFN 20 in 2007.</p> <p>This proposal is therefore a by-product of the reviewing work on the reserve section. JCUFN is proposing redefinition of the coordinates of the Ogasawara</p>
-----------------	--

	Plateau, not proposing a new name.
--	------------------------------------

NOTE : This form should be forwarded, when completed :

- a) **If the undersea feature is located inside the external limit of the territorial sea :-**
to your "National Authority for Approval of Undersea Feature Names" (see page 2-9) or, if this does not exist or is not known, either to the IHB or to the IOC (see addresses below);
- b) **If at least 50 % of the undersea feature is located outside the external limits of the territorial sea :-**
to the IHB or to the IOC, at the following addresses :

International Hydrographic Bureau (IHB) 4, Quai Antoine 1er B.P. 445 MC 98011 MONACO CEDEX <u>Principality of MONACO</u> Fax: +377 93 10 81 40 E-mail: info@ihb.mc	Intergovernmental Oceanographic Commission (IOC) UNESCO Place de Fontenoy 75700 PARIS <u>France</u> Fax: +33 1 45 68 58 12 E-mail: info@unesco.org
---	---

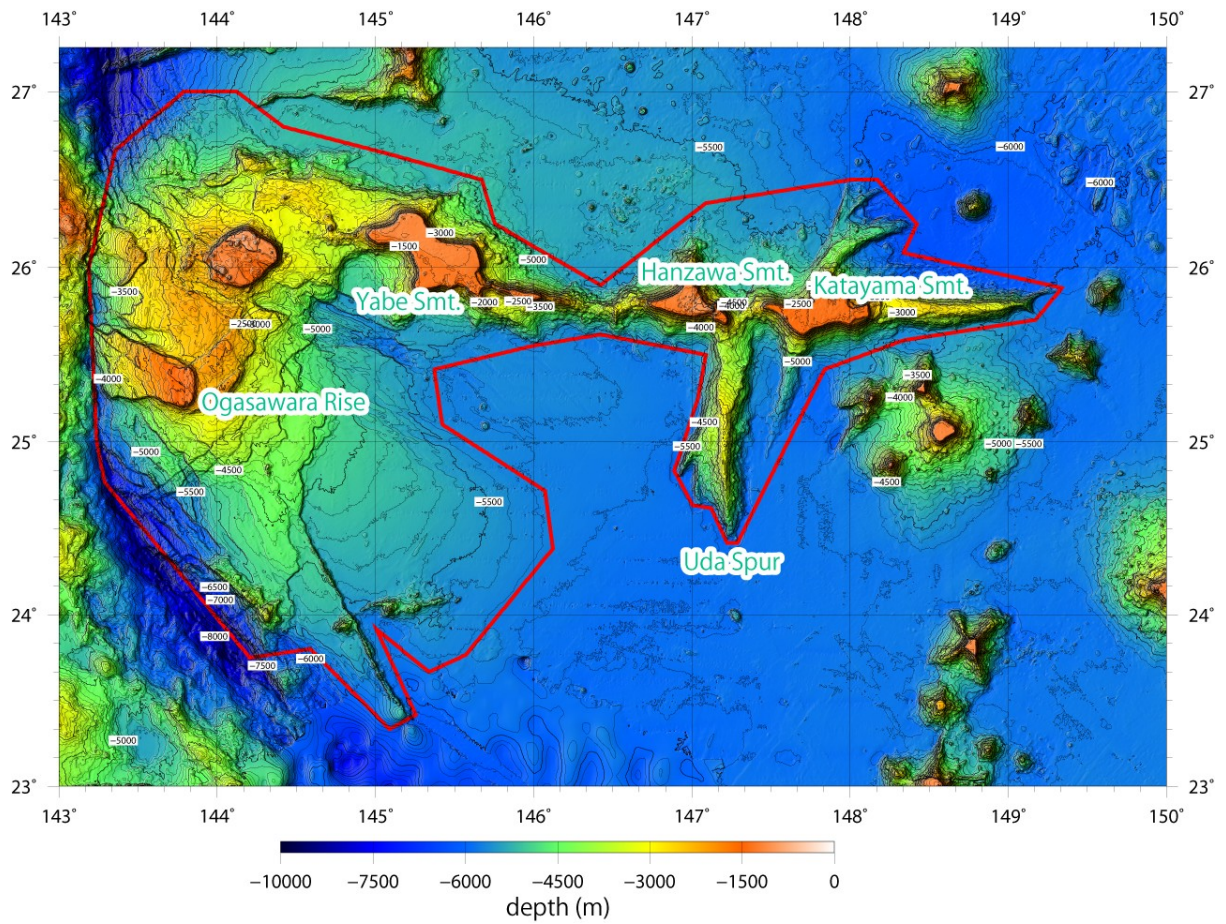


Fig. 1. Bathymetric map of the Ogasawara Plateau. Contours are in 100 m.

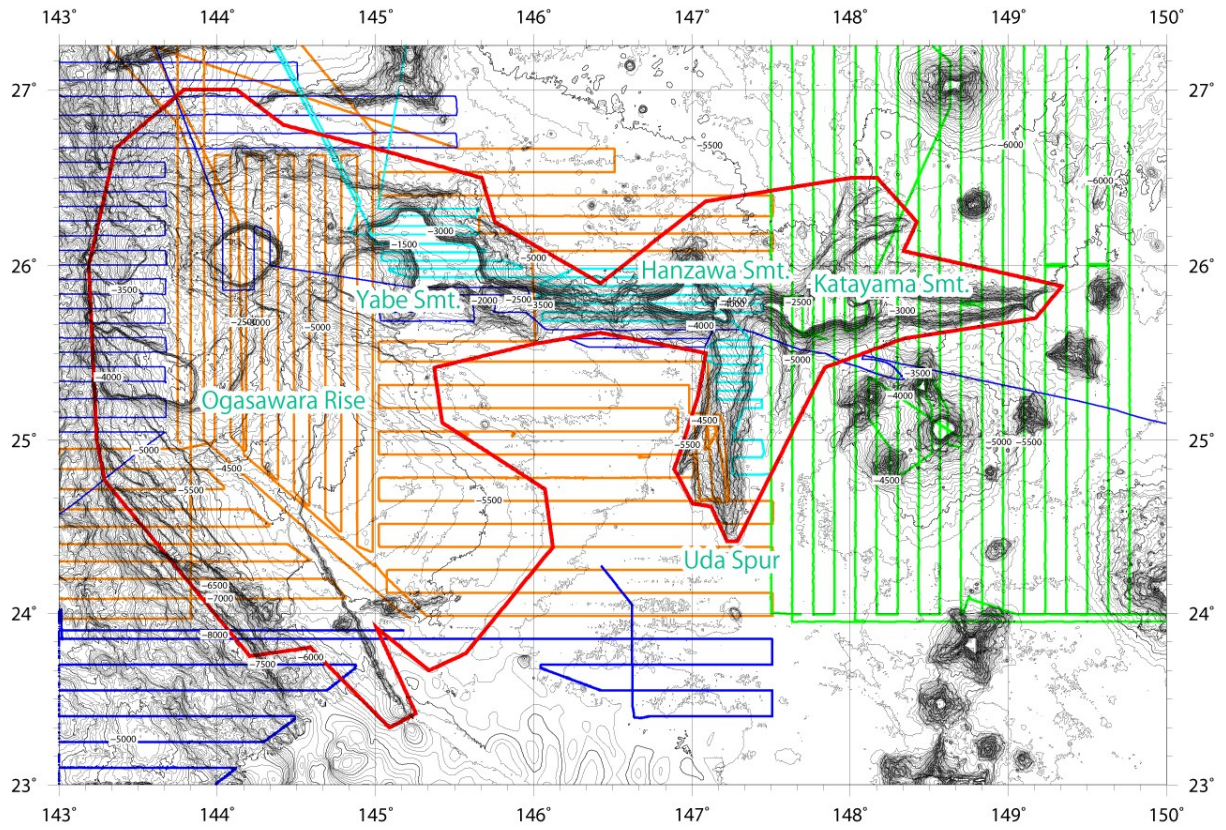


Fig. 2. Bathymetric map of the Ogasawara Plateau, showing track lines. Tracklines in dark blue are surveys in 2001, in orange are in 2002, in green are surveys in 2003 and 2004, in purple are surveys in 2005, in light blue are surveys in 2006. Contours are in 100 m.