

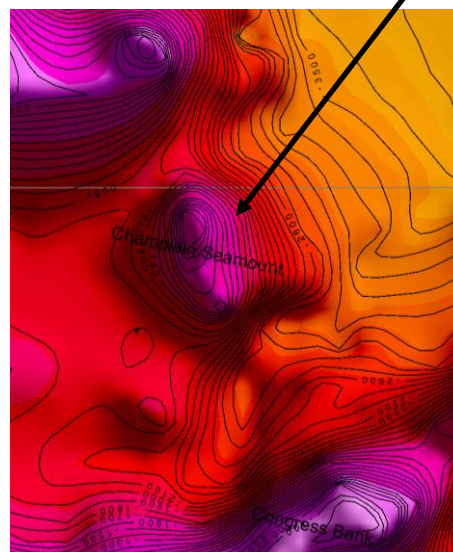
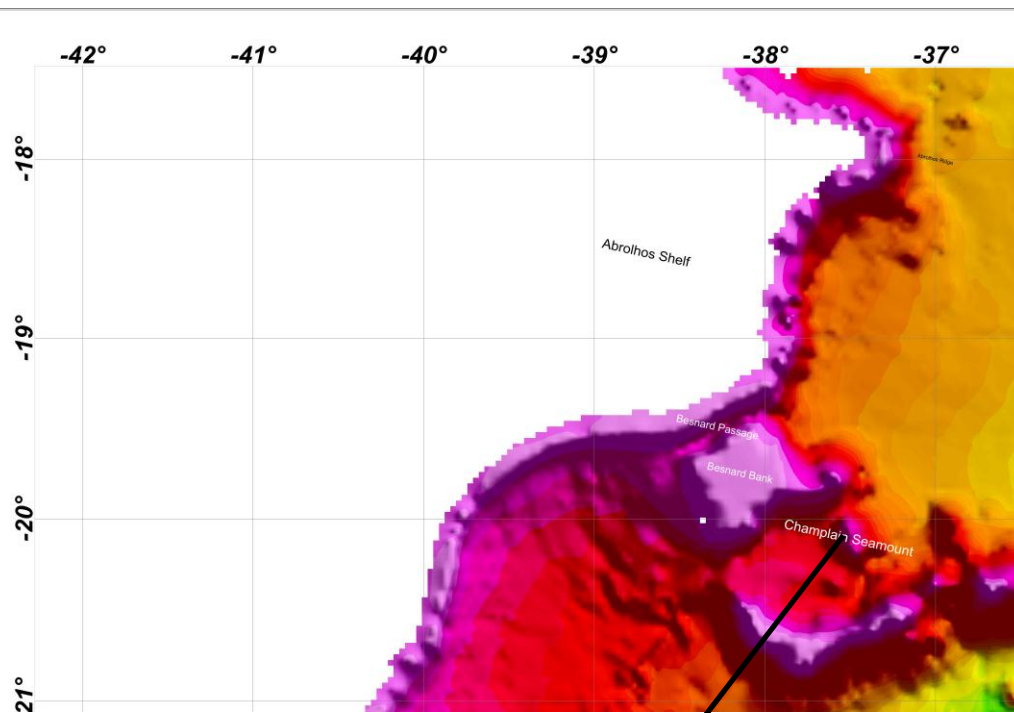
Report to 24th SCUFN meeting.

Ana Angélica Ligiéro Alberoni, 9 August 2011.

A review of many undersea features in the Brazilian continental margin listed in the GEBCO Gazetteer shown that are some features with uncorrected coordinates, probably due the navigation system at that time.

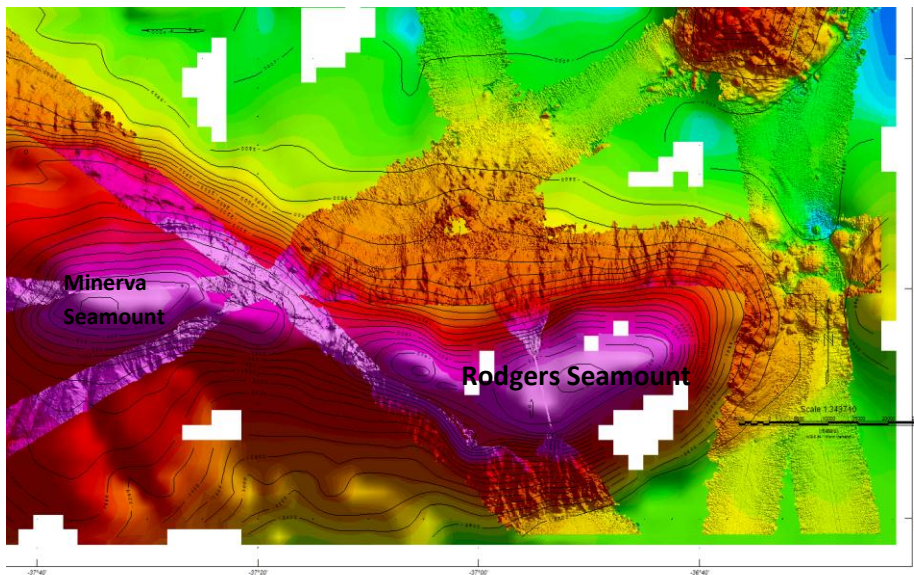
1. Champlain Seamount: 20° 15' S, 37° 20' W

A multibeam survey in 2010 revealed that the correct located is 20° 07' S, 37° 30' W, so that it is necessary reform the location.



2. Rodgers Seamount: 17°00' S 37°00' W

A multibeam survey in 2010 revealed that the correct location is 17° 06' 40''S, 36° 51' 00''W, so that it is necessary reform the location.



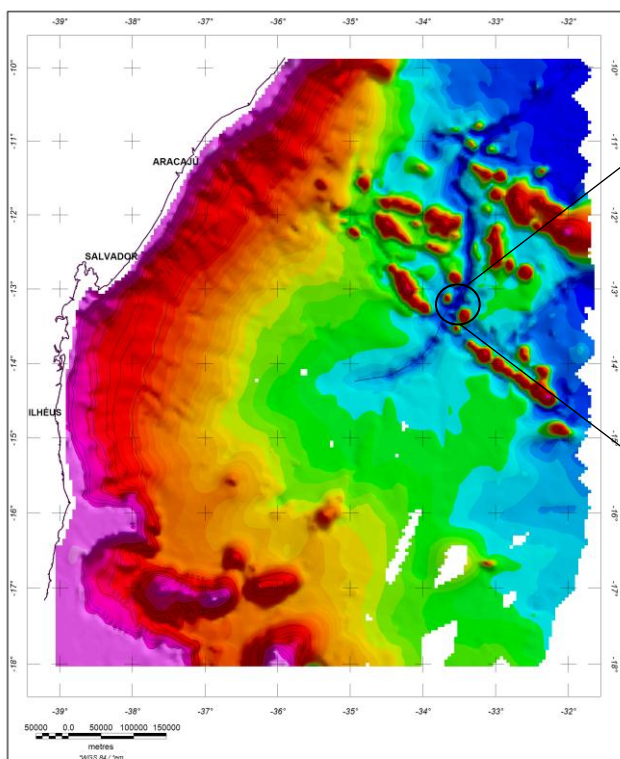
3. Pernambuco Seachannel: 12°00' S 33°15' W

The coordinate of this channel listed in the GEBCO gazetteer is one point only. It is a huge channel, approximately 500 km long and 10-20 km wide as shown in the figure below. So it is necessary include a point line in order to better define the seachannel feature.

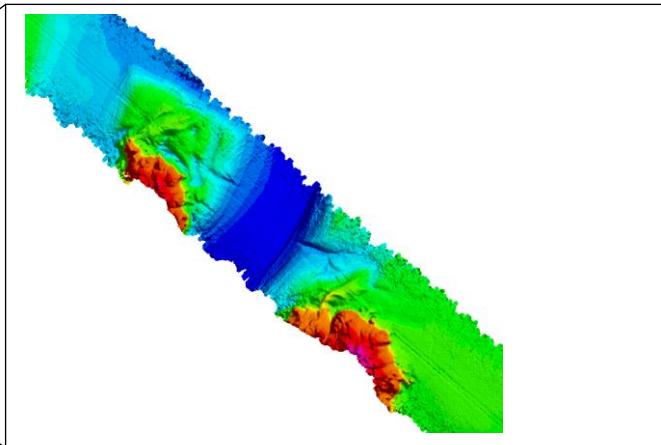
	Lat.	Long.
Coordinates:	(Central Point) 11°53.33'S	(Central Point) 33°20.98'W
	10°08.45'S	32°03.50'W
	10°40.92'S	32°42.03'W
	11°14.13'S	33°27.96'W
	11°41.22'S	33°30.00'W
	11°53.33'S	33°20.98'W
	12°52.57'S	33°23.43'W
	13°16.68'S	33°39.02'W
	13°40.75'S	33°49.27'W
	14°06.78'S	34°22.47'W

14°14.78'S

34°55.67'W



Multibeam Data - 2010



Bathymetric grid

