

UNDERSEA FEATURE NAME PROPOSAL
(Sea NOTE overleaf)

Note: The boxes will expand as you fill the form.

Name Proposed:	Yoro, Isen and Sakibaru Holes	Ocean or Sea:	Philippine Sea, Northwestern Pacific
-----------------------	-------------------------------	----------------------	--------------------------------------

Geometry that best defines the feature (Yes/No) :						
Point	Line	Polygon	Multiple points	Multiple lines*	Multiple polygons*	Combination of geometries*
		Yes				

* Geometry should be clearly distinguished when providing the coordinates below.

	Lat. (e.g. 63°32.6'N)	Long. (e.g. 046°21.3'W)
Coordinates:	Yoro Hole	Yoro Hole
	27°50'N	130°24'E
	27°57'N	130°27'E
	27°60'N	130°34'E
	27°53'N	130°48'E
	27°44'N	130°54'E
	27°42'N	130°52'E
	27°42'N	130°41'E
	27°45'N	130°36'E
	27°45'N	130°30'E
	27°50'N	130°24'E
	Isen Hole	Isen Hole
	27°16'N	130°47'E
	27°16'N	130°42'E
	27°19'N	130°38'E
	27°22'N	130°37'E
	27°28'N	130°41'E
	27°27'N	130°45'E
	27°23'N	130°50'E
	27°21'N	130°50'E
	27°16'N	130°47'E
	Sakibaru Hole	Sakibaru Hole
	27°14'N	130°48'E
	27°14'N	130°53'E
	27°16'N	131°08'E
	27°14'N	131°10'E
	27°08'N	131°06'E
	27°02'N	130°54'E
	27°00'N	130°43'E
	27°04'N	130°40'E
	27°14'N	130°48'E

Feature Description for Yoro Hole:	Maximum Depth:	6700 m	Steepness :	
	Minimum Depth :		Shape :	
	Total Relief :		Dimension/Size :	

Feature Description for	Maximum Depth:	6700 m	Steepness :	
	Minimum Depth :		Shape :	

Isen Hole:	Total Relief :		Dimension/Size :	
-------------------	----------------	--	------------------	--

Feature Description for Sakibaru Hole:	Maximum Depth :	6550 m	Steepness :	
	Minimum Depth :		Shape :	
	Total Relief :		Dimension/Size :	

Associated Features:	Kita-Daito Basin
-----------------------------	------------------

Chart/Map References:	Shown Named on Map/Chart:	6315
	Shown Unnamed on Map/Chart:	
	Within Area of Map/Chart:	

Reason for Choice of Name (if a person, state how associated with the feature to be named):	<p>During its review work, JCUFN rejected the tentative Matsushima, Hashidate, and Miyajima Holes. These rejected three specific names are known as the “Japan’s top three must-see scenery”. Since there are three holes in the concerned area, SCUFN-14 (2001, Tokyo) gave these three names to the three holes ad hoc. During its review work, JCUFN considered these three specific names were not appropriate, and chose new three specific names taken from the name of towns on the nearby Tokuno Shima Island.</p> <p>Please note that “Hasidate Hole” is correctively called “Amanohashidate Hole”, which is the current situation of the Gazetteer. Furthermore, “Sakibaru Seamount” is wrongly registered as “Sakibara Seamount” in the Gazetteer.</p>
--	---

Discovery Facts:	Discovery Date:	
	Discoverer (Individual, Ship):	

Supporting Survey Data, including Track Controls:	Date of Survey:	Oct., Nov. 1995 June 2001 Dec. 2007
	Survey Ship:	S/V Meiyō (1995) S/V Shoyo (2001, 2007)
	Sounding Equipment:	SeaBeam 2000 (1995) SeaBeam 2112 (2007)
	Type of Navigation:	GPS with Selective Availability (1995) GPS without Selective Availability (after 2001)
	Estimated Horizontal Accuracy (nm):	0.054 nm (1995) 0.014 nm (2001, 2007)
	Survey Track Spacing:	See Fig. 2
	Supporting material can be submitted as Annex in analog or digital form.	

Proposer(s):	Name(s):	JCUFN
	Date:	August 11, 2011
	E-mail:	ohara@jodc.go.jp
	Organization and Address:	Hydrographic and Oceanographic Department of Japan 5-3-1 Tsukiji, Chuo-ku, Tokyo 104-0045, Japan
	Concurrer (name, e-mail, organization and address):	

Remarks:	This is to revise a tentative decision at SCUFN-14 (2001, Tokyo).
-----------------	---

NOTE : This form should be forwarded, when completed :

- a) **If the undersea feature is located inside the external limit of the territorial sea :-**
to your "National Authority for Approval of Undersea Feature Names" (see page 2-9) or, if this does not exist or is not known, either to the IHB or to the IOC (see addresses below);
- b) **If at least 50 % of the undersea feature is located outside the external limits of the territorial sea :-**
to the IHB or to the IOC, at the following addresses :

International Hydrographic Bureau (IHB) 4, Quai Antoine 1er B.P. 445 MC 98011 MONACO CEDEX Principality of MONACO Fax: +377 93 10 81 40 E-mail: info@ihb.mc	Intergovernmental Oceanographic Commission (IOC) UNESCO Place de Fontenoy 75700 PARIS France Fax: +33 1 45 68 58 12 E-mail: info@unesco.org
--	--

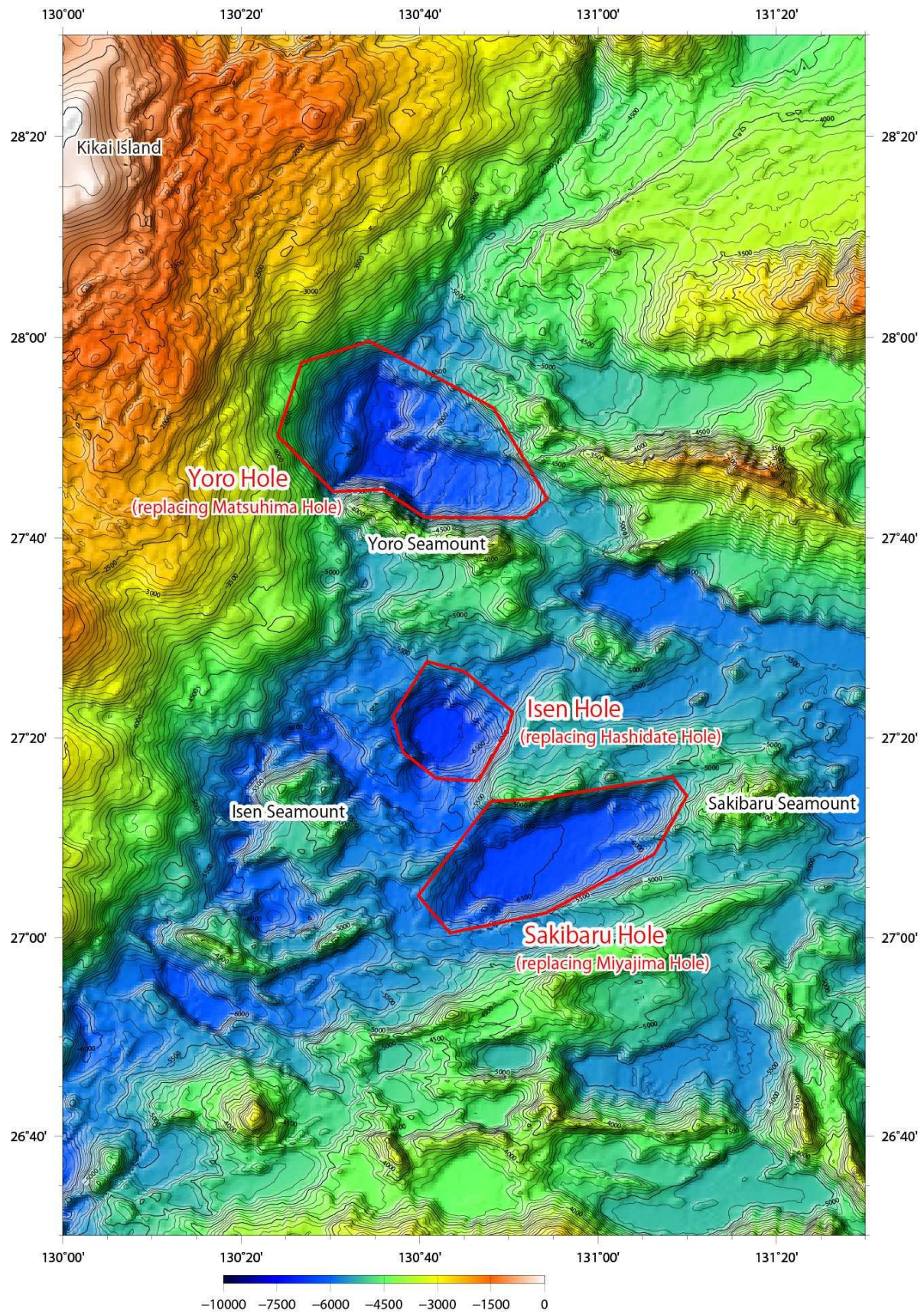


Fig 1. Bathymetric map of the Yoro, Isen and Sakibaru Holes. Contours are in 100 m. The poligons delineating the feature are shown in red line.

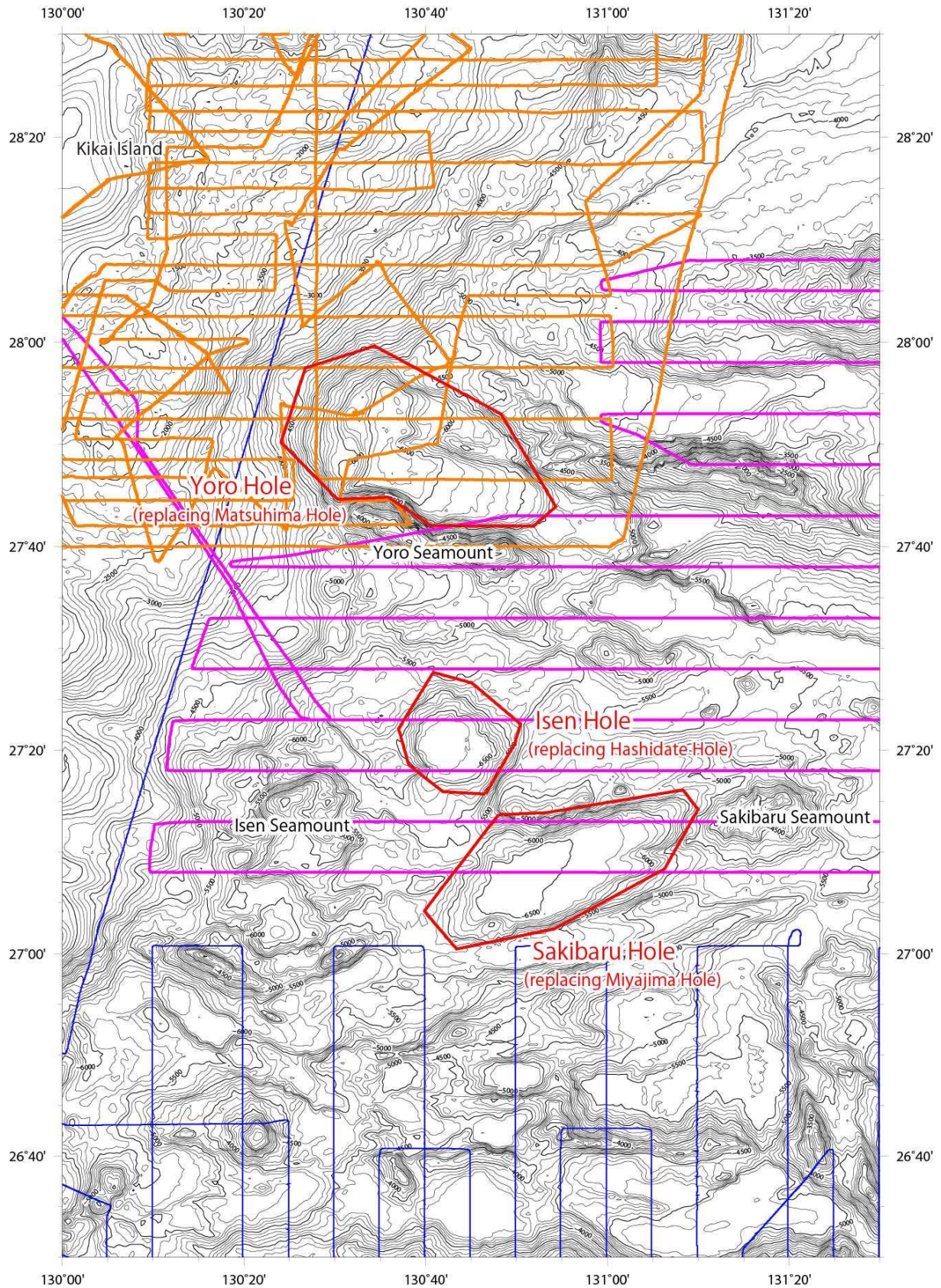


Fig 2. Bathymetric map of the Yoro, Isen and Sakibaru Holes. Contours are in 100 m. The polygons delineating the feature are shown in red line. The ship track are shown in orange (for surveys in 1995), blue (for surveys in 2001) and purple (for surveys in 2007) line.