

UNDERSEA FEATURE NAME PROPOSAL
(Sea NOTE overleaf)

Note: The boxes will expand as you fill the form.

Name Proposed:	Koho Ridge and Koho Hole	Ocean or Sea:	Philippine Sea, Northwestern Pacific
-----------------------	--------------------------	----------------------	--------------------------------------

Geometry that best defines the feature (Yes/No) :						
Point	Line	Polygon	Multiple points	Multiple lines*	Multiple polygons*	Combination of geometries*
		Yes				

* Geometry should be clearly distinguished when providing the coordinates below.

	Lat. (e.g. 63°32.6'N)	Long. (e.g. 046°21.3'W)
Coordinates:	Koho Ridge	Koho Ridge
	26°40'N	134°23'E
	26°47'N	134°29'E
	26°60'N	135°17'E
	26°54'N	135°41'E
	26°42'N	135°47'E
	26°37'N	135°45'E
	26°30'N	134°53'E
	26°29'N	134°33'E
	26°33'N	134°24'E
	26°40'N	134°23'E
	Koho Hole	Koho Hole
	26°32'N	135°23'E
	26°41'N	135°23'E
26°44'N	135°25'E	
26°44'N	135°36'E	
26°21'N	135°44'E	
26°16'N	135°44'E	
26°20'N	135°28'E	
26°32'N	135°23'E	

Feature Description for Koho Ridge:	Maximum Depth:	5200 m	Steepness :	
	Minimum Depth :	270 m	Shape :	
	Total Relief :	4930 m	Dimension/Size :	

Feature Description for Koho Hole:	Maximum Depth:	5150 m	Steepness :	
	Minimum Depth :		Shape :	
	Total Relief :		Dimension/Size :	

Associated Features:	Kyushu-Palau Ridge
-----------------------------	--------------------

Chart/Map References:	Shown Named on Map/Chart:	
	Shown Unnamed on Map/Chart:	
	Within Area of Map/Chart:	

Reason for Choice of Name (if a person, state how associated with the feature to be named):	During its review work, JCUFN approved these two names. These names are relevant to Japan's survey vessel "Koho".
--	---

Discovery Facts:	Discovery Date:	
	Discoverer (Individual, Ship):	

Supporting Survey Data, including Track Controls:	Date of Survey:	Oct., Nov. 1984 June 1994 June 2001 April, May. 2003
	Survey Ship:	S/V Takuyo (1984, 2001, 2003) S/V Meiyo (1994)
	Sounding Equipment:	SeaBeam 2000 (1995) SeaBeam 2112 (2007)
	Type of Navigation:	Loran C (1984) GPS with Selective Availability (1994) GPS without Selective Availability (after 2001)
	Estimated Horizontal Accuracy (nm):	Less than 0.108 nm (1984) 0.054 nm (1995) 0.014 nm (2001, 2007)
	Survey Track Spacing:	See Fig. 2
	Supporting material can be submitted as Annex in analog or digital form.	

Proposer(s):	Name(s):	JCUFN
	Date:	August 11, 2011
	E-mail:	ohara@jodc.go.jp
	Organization and Address:	Hydrographic and Oceanographic Department of Japan 5-3-1 Tsukiji, Chuo-ku, Tokyo 104- 0045, Japan
	Concurrer (name, e-mail, organization and address):	

Remarks:	This is to approve a tentative decision at SCUFN-14 (2001, Tokyo).
-----------------	--

NOTE : This form should be forwarded, when completed :

- a) **If the undersea feature is located inside the external limit of the territorial sea** :-
to your "National Authority for Approval of Undersea Feature Names" (see page 2-9) or, if this does not exist or is not known, either to the IHB or to the IOC (see addresses below);
- b) **If at least 50 % of the undersea feature is located outside the external limits of the territorial sea** :-
to the IHB or to the IOC, at the following addresses :

International Hydrographic Bureau (IHB) 4, Quai Antoine 1er B.P. 445 MC 98011 MONACO CEDEX Principality of MONACO Fax: +377 93 10 81 40 E-mail: info@ihb.mc	Intergovernmental Oceanographic Commission (IOC) UNESCO Place de Fontenoy 75700 PARIS France Fax: +33 1 45 68 58 12 E-mail: info@unesco.org
--	--

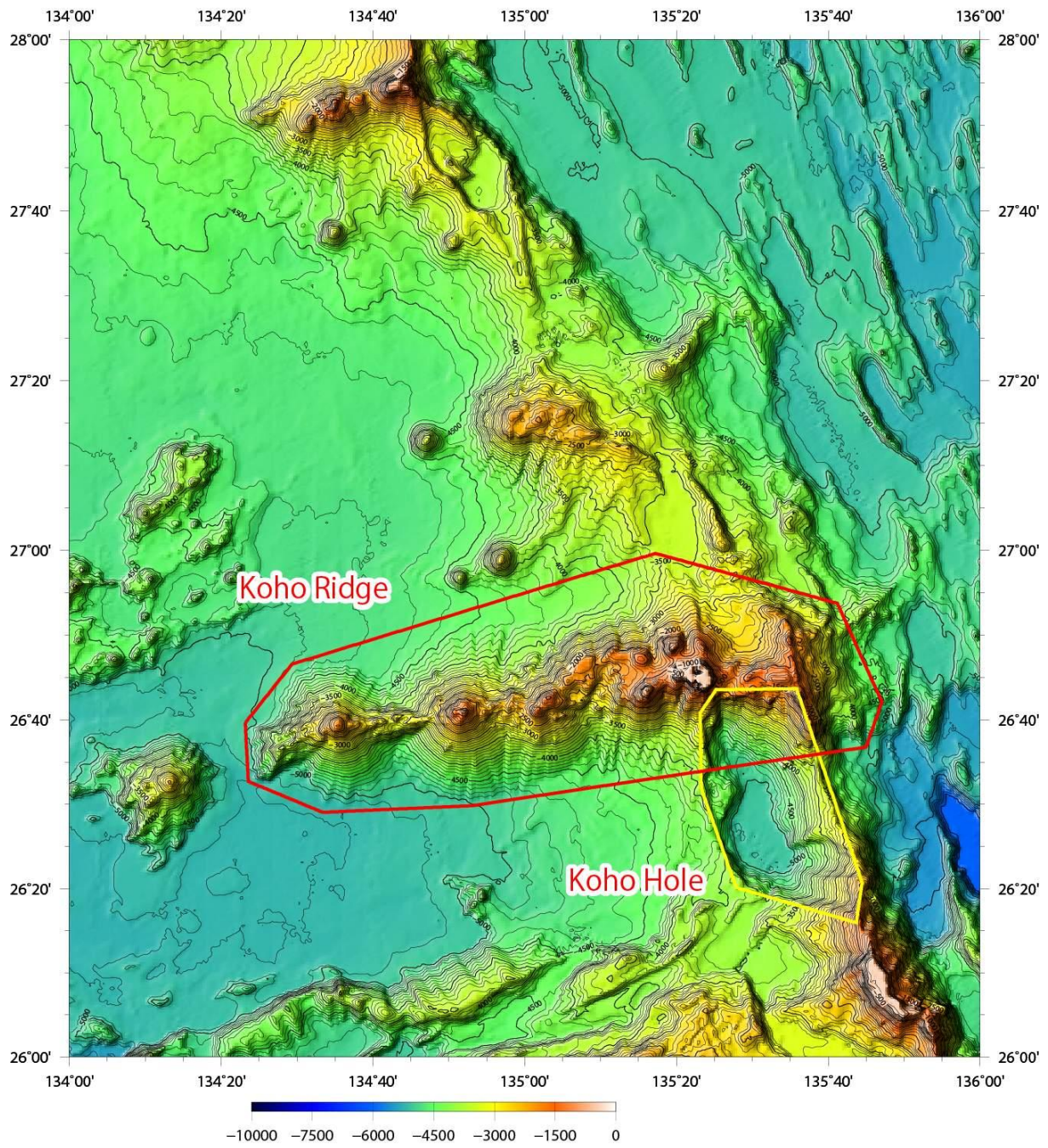


Fig 1. Bathymetric map of the Koho Ridge and Koho Hole. Contours are in 100 m. The polygons delineating the feature are shown in red and yellow lines.

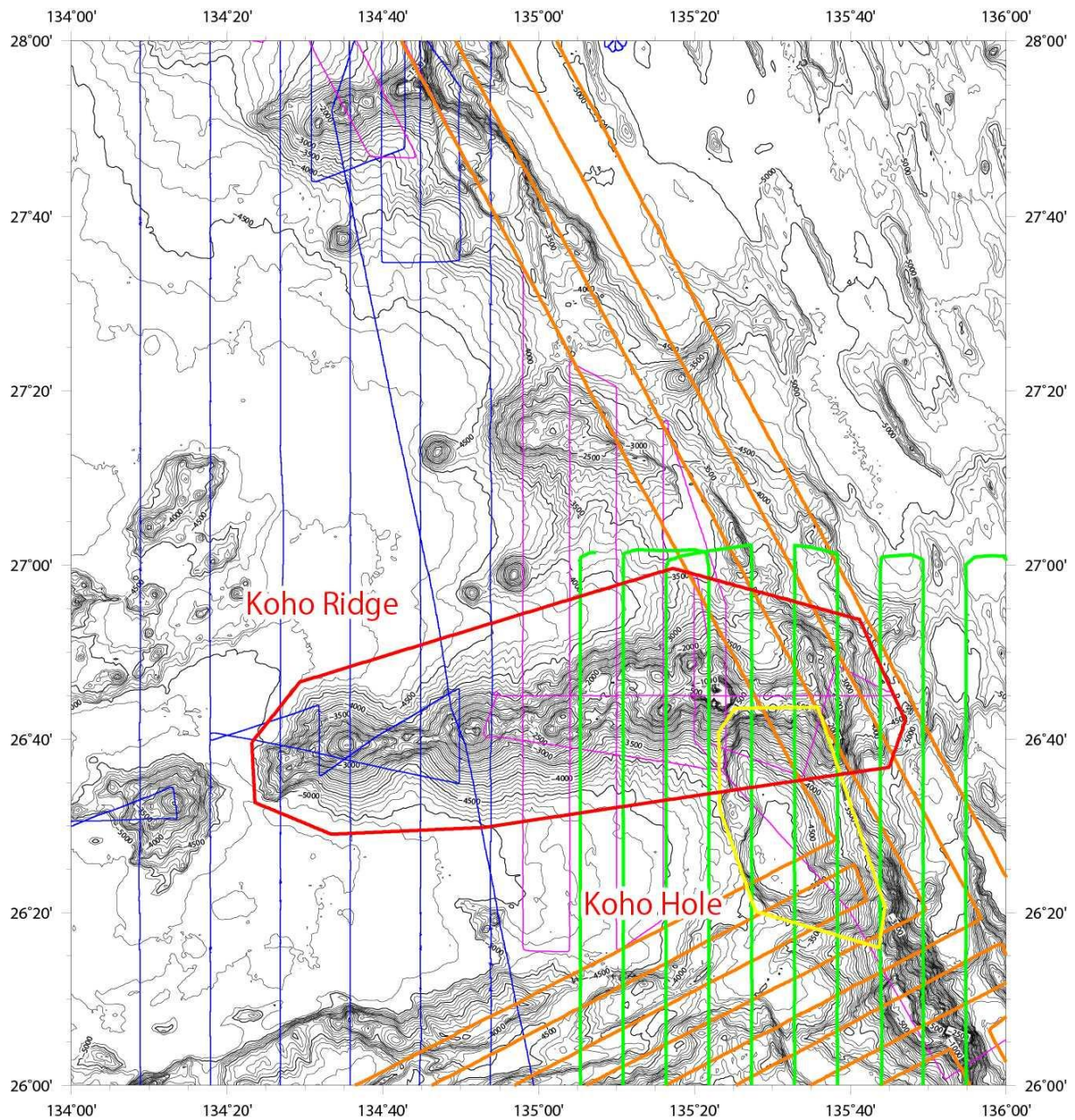


Fig 2. Bathymetric map of the Koko Ridge and Koko Hole. Contours are in 100 m. The polygons delineating the feature are shown in red and yellow lines. The ship track are shown in green (for surveys in 1984), orange (for surveys in 1994) and blue (for surveys in 2001), and pink (for surveys in 2003) lines.