

Re: Action SCUFN 23/10 (on the Japanese Guyots)

Yasuhiko Ohara

August 11, 2011

Following the SCUFN-23's suggestion, JCFUN is willing to accept the Russian proposal for revising the extent of the Japanese Guyots (Table 1, Figure 1). Figure 2 is the schematic magnetic anomalies identification, showing the tectonic background of the new Japanese Guyots.

However, the definition of the new Japanese Guyots raises a new problem: there are no features with a name "guyot" within the new Japanese Guyots extent. This issue can be discussed within SCUFN-24.

Table 1. Coordinates for the revised extent of the Japanese Guyots

| | |
|---------|----------|
| 34°33'N | 143°40'E |
| 34°27'N | 144°23'E |
| 34°11'N | 146°04'E |
| 33°53'N | 146°08'E |
| 32°21'N | 145°03'E |
| 32°41'N | 142°52'E |
| 34°33'N | 143°40'E |

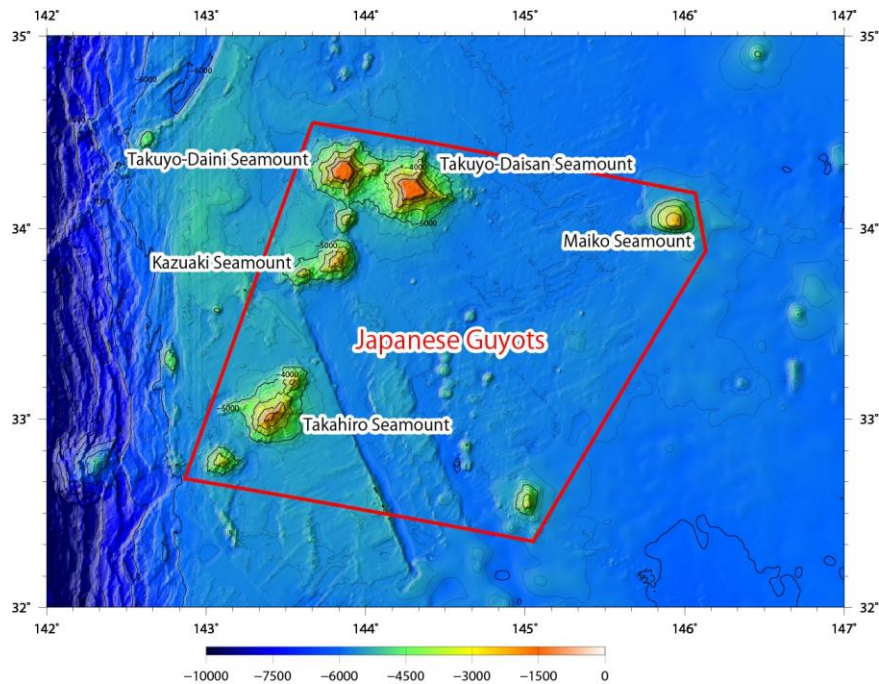


Fig 1. Bathymetric map of the Japanese Guyots. Contours are in 200 m. The polygon delineating the feature are shown in red line.

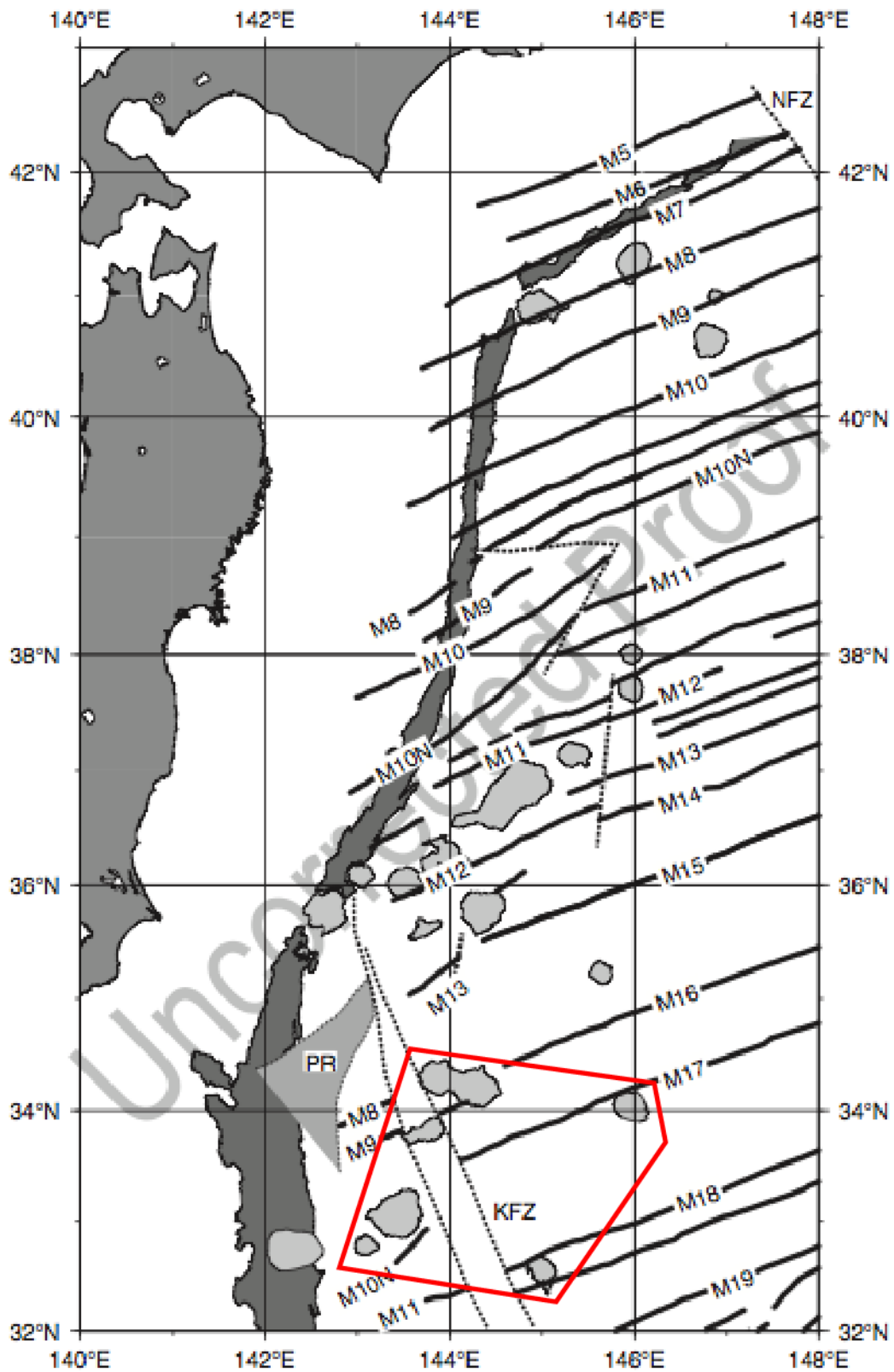


Fig 2. Magnetic anomalies identification after Nakanishi (2001). The polygon delineating the feature are shown in red line.