

**Re: Action SCUFN 23/49 (on the Urahara and Somachi Seamounts)**

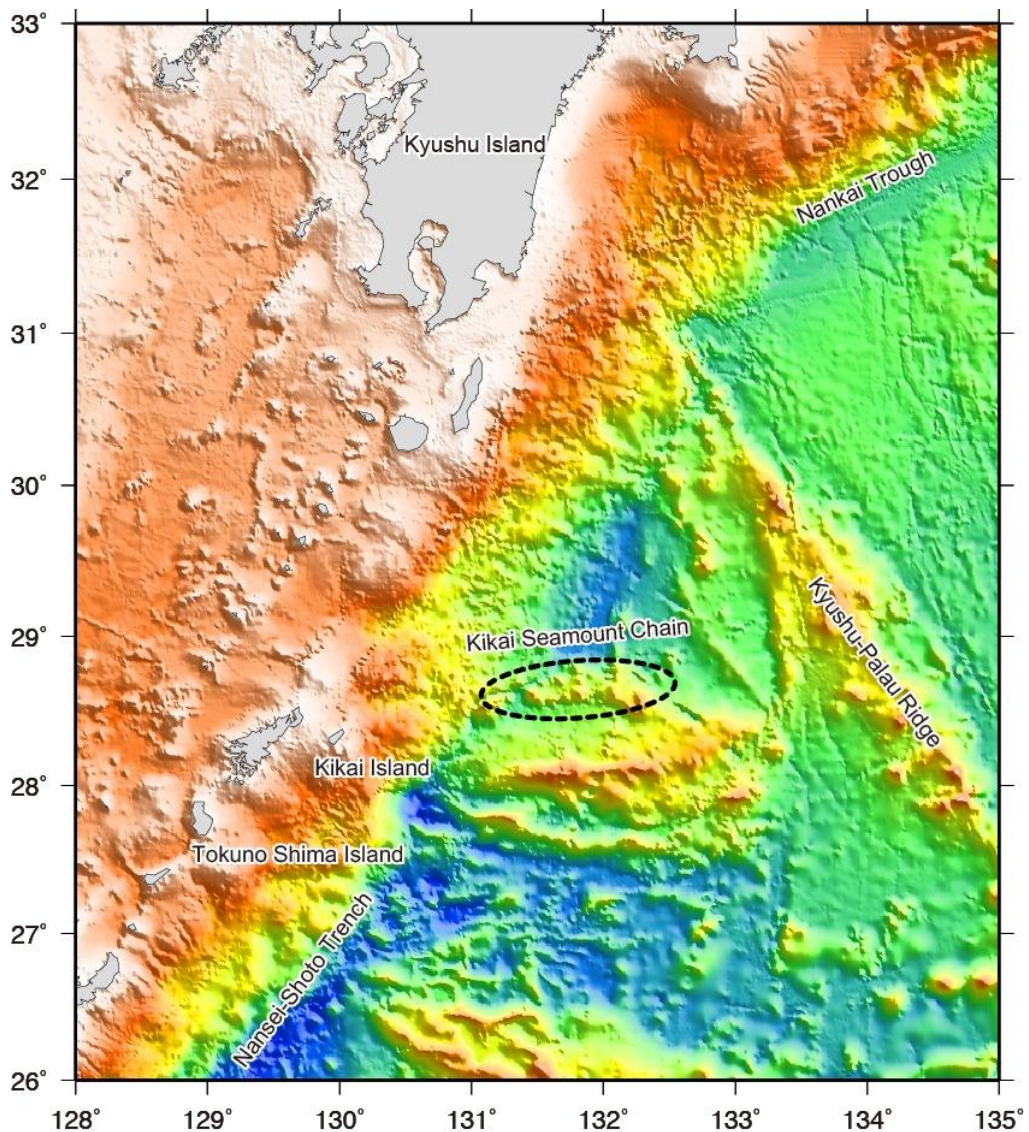
**Yasuhiko Ohara**

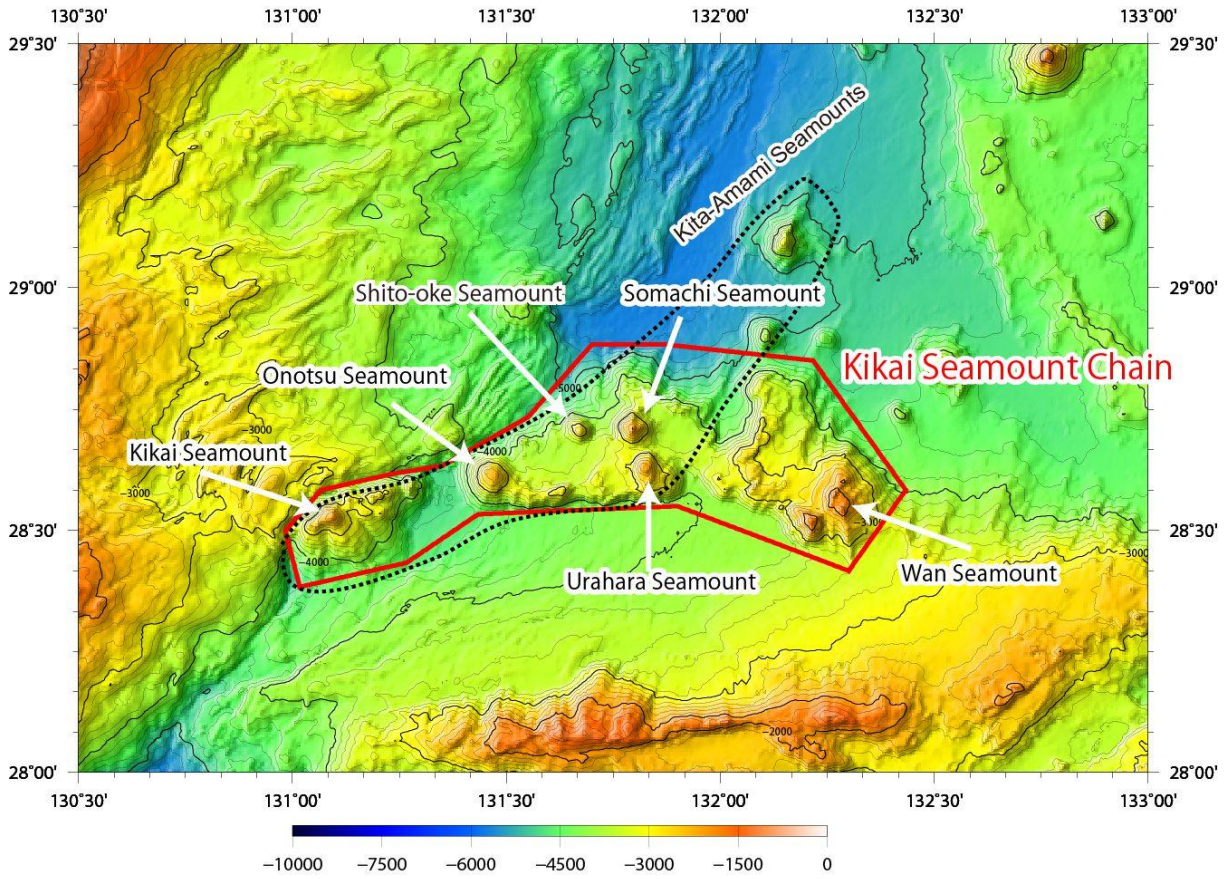
**August 11, 2011**

Following the SCUFN-23's suggestion, JCFUN examined the bathymetry of the region around the "Urahara Seamount" and re-defined the coordinates of the seamount.

This examination resulted in (1) re-definition of Somachi Seamount, and new naming of (2) Shito-oke Seamount, (3) Onotsu Seamount, and (5) Kikai Seamount Chain. Proposals for each seamount are presented on the separate documents.

Please note that proposing the Kikai Seamount Chain will result in removal of "Kita-Amami Seamounts" from the GEBCO Gazetteer, which was tentatively accredited in SCUFN-14 (2001, Tokyo). (Re: SCUFN-14 Page 64).





53	KITA-AMAMI Seamounts	28°32'N 131°06'E	28°40'N 131°48'E	29°05'N 132°09'E	GEBCO 5.06
----	-------------------------	---------------------	---------------------	---------------------	------------

**Accepted.**

*Named after the nearby Amami Island (Kita = North, in Japanese).*

**Note:** The Kita-Amami Seamounts encompass all features numbered 54 to 60 below.