

## UNDERSEA FEATURE NAME PROPOSAL

(Sea NOTE overleaf)

Note: The boxes will expand as you fill the form.

<b>Name Proposed:</b>	<a href="#">Kamchatka Hill</a>	<b>Ocean or Sea:</b>	<a href="#">Pacific Ocean</a>
-----------------------	--------------------------------	----------------------	-------------------------------

**Geometry** that best defines the feature (Yes/No) :

Point	Line	Polygon	Multiple points	Multiple lines*	Multiple polygons*	Combination of geometries*
<a href="#">Yes</a>						

\* Lines / polygons / geometries should be clearly distinguished when providing the coordinates below.

<b>Coordinates:</b>	Lat. (e.g. 63°32.6'N) <a href="#">14°26'24.36"N</a>	Long. (e.g. 046°21.3'W) <a href="#">131°48'3.96"W</a>
---------------------	--	--

<b>Feature Description:</b>	Maximum Depth: <a href="#">5250</a>	Steepness : <a href="#">Up to 32°</a>	Shape : <a href="#">Double top 8-shape</a>
	Minimum Depth : <a href="#">4275</a>	Dimension/Size : <a href="#">3.5x6.5 miles</a>	
	Total Relief : <a href="#">975</a>		

<b>Associated Features:</b>	<a href="#">The hill is located to the South from Clarion fracture zone and to the East from Golovnin seamount</a>
-----------------------------	--

<b>Chart/Map References:</b>	Shown Named on Map/Chart:	GEBCO sheet <a href="#">5.07</a>
	Shown Unnamed on Map/Chart:	
	Within Area of Map/Chart:	

<b>Reason for Choice of Name</b> (if a person, state how associated with the feature to be named):	In honor of RV “Kamchatka”. Famous Russian navigator, traveler V.M. Golovnin made a global cruise on this vessel in 1817 – 1819. The Pacific Ocean was crossed near the Clarion-Klipperton zone and the considered hill.
--	--

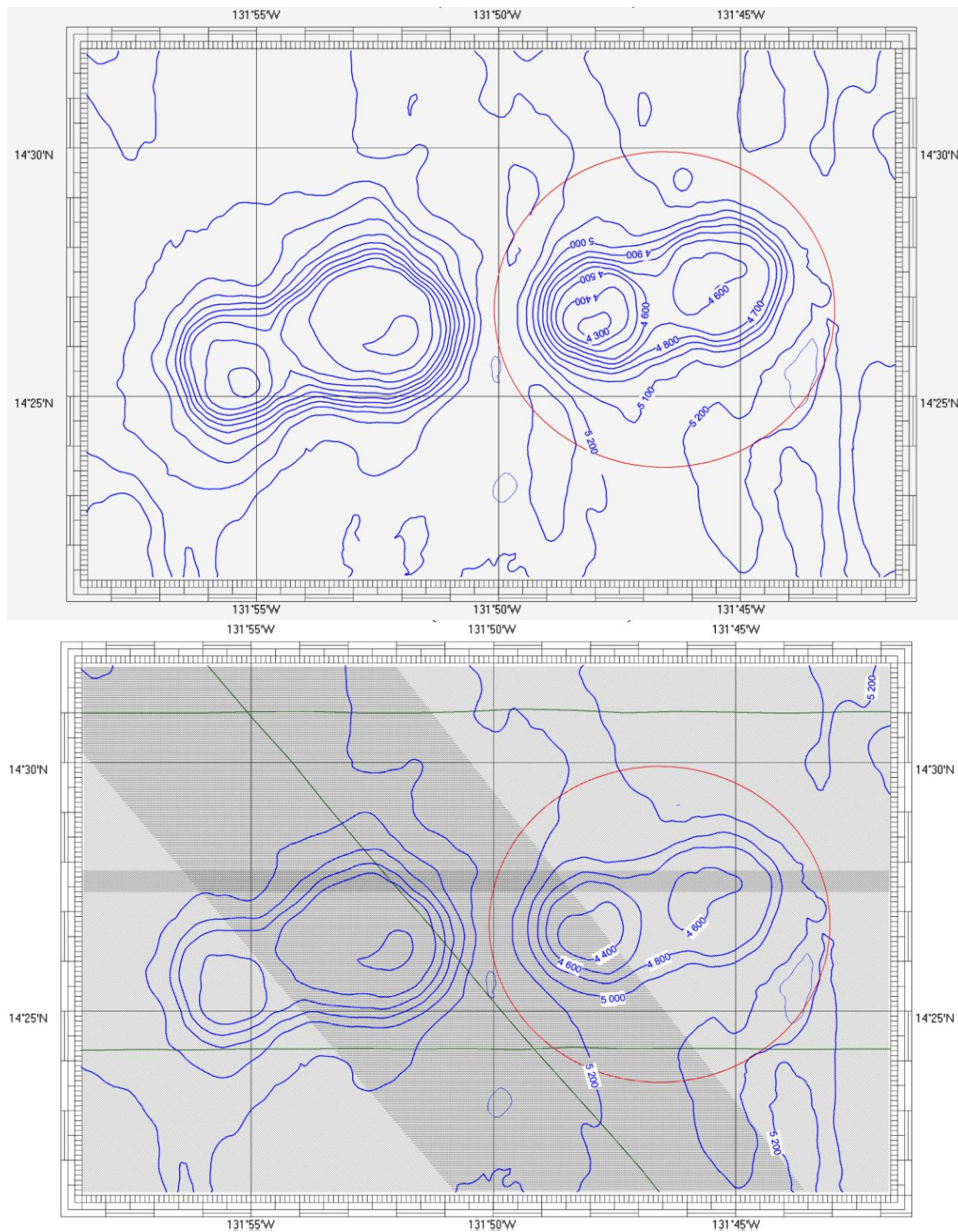
<b>Discovery Facts:</b>	Discovery Date:	<a href="#">1999</a>
	Discoverer (Individual, Ship):	<a href="#">RV “Gelendzhik”</a>

<b>Supporting Survey Data, including Track Controls:</b>	Date of Survey:	<a href="#">1999</a>
	Survey Ship:	<a href="#">RV “Gelendzhik”</a>
	Sounding Equipment:	<a href="#">EM 12 S 120 (Simrad)</a>
	Type of Navigation:	<a href="#">GPS</a>
	Estimated Horizontal Accuracy (nm):	<a href="#">22 meters</a>
	Survey Track Spacing:	<a href="#">3D</a>

<b>Proposer(s):</b>	Name(s):	<a href="#">V.V. Kruglyakov, M.E. Melnikov</a>
	Date:	<a href="#">2011</a>
	E-mail:	<a href="mailto:ocean@ymg.ru">ocean@ymg.ru</a>
	Organization and Address:	<a href="#">State Scientific Centre YUZHMERGEOLOGIYA</a>
	Concurrer (name, e-mail, organization and address):	

**. UNDERSEA FEATURE NAME *Kamchatka hill***

*Bathymetric map (contour interval 100 m.)*



The measurement scheme of the Kamchatka hill. Sounding lines of Simrad EM 12 S 120 are shown by green straight lines. The coverage area of the multibeam echosounder is shown by shading. Sections of composite shading are overlapping zones.