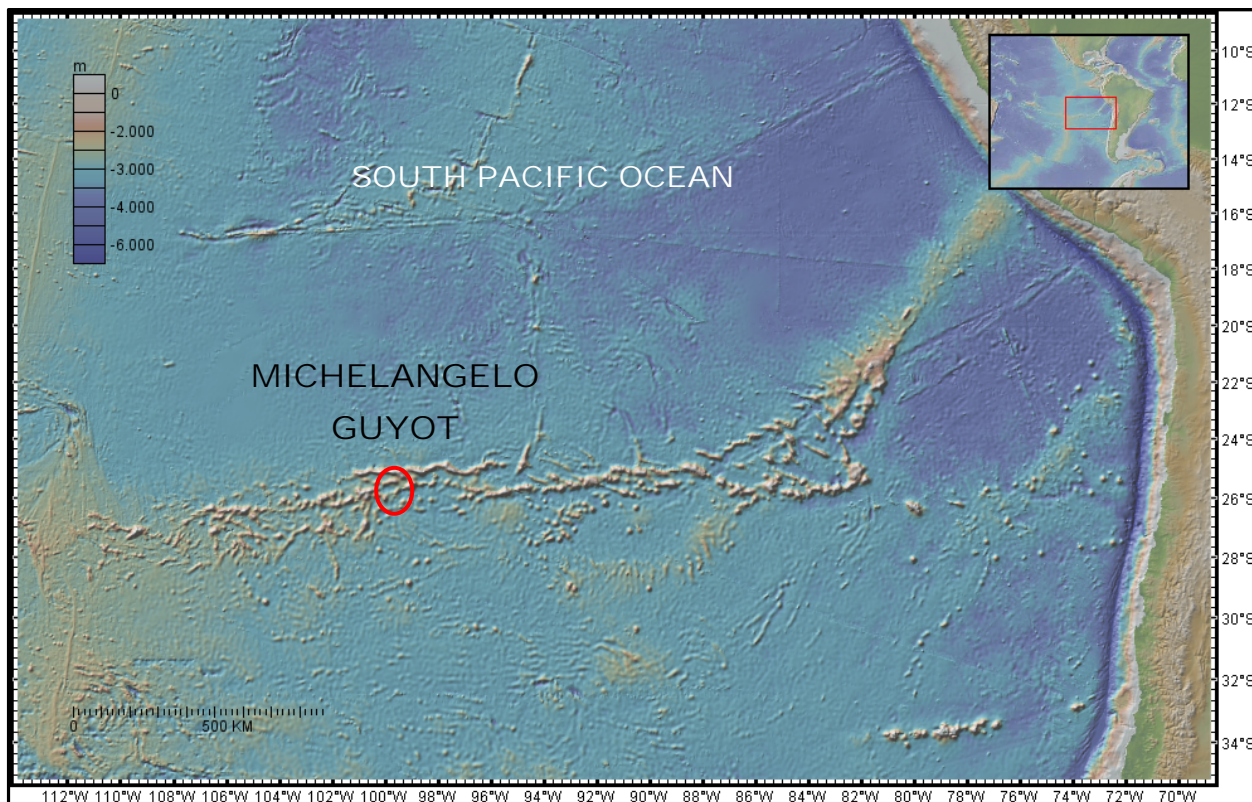
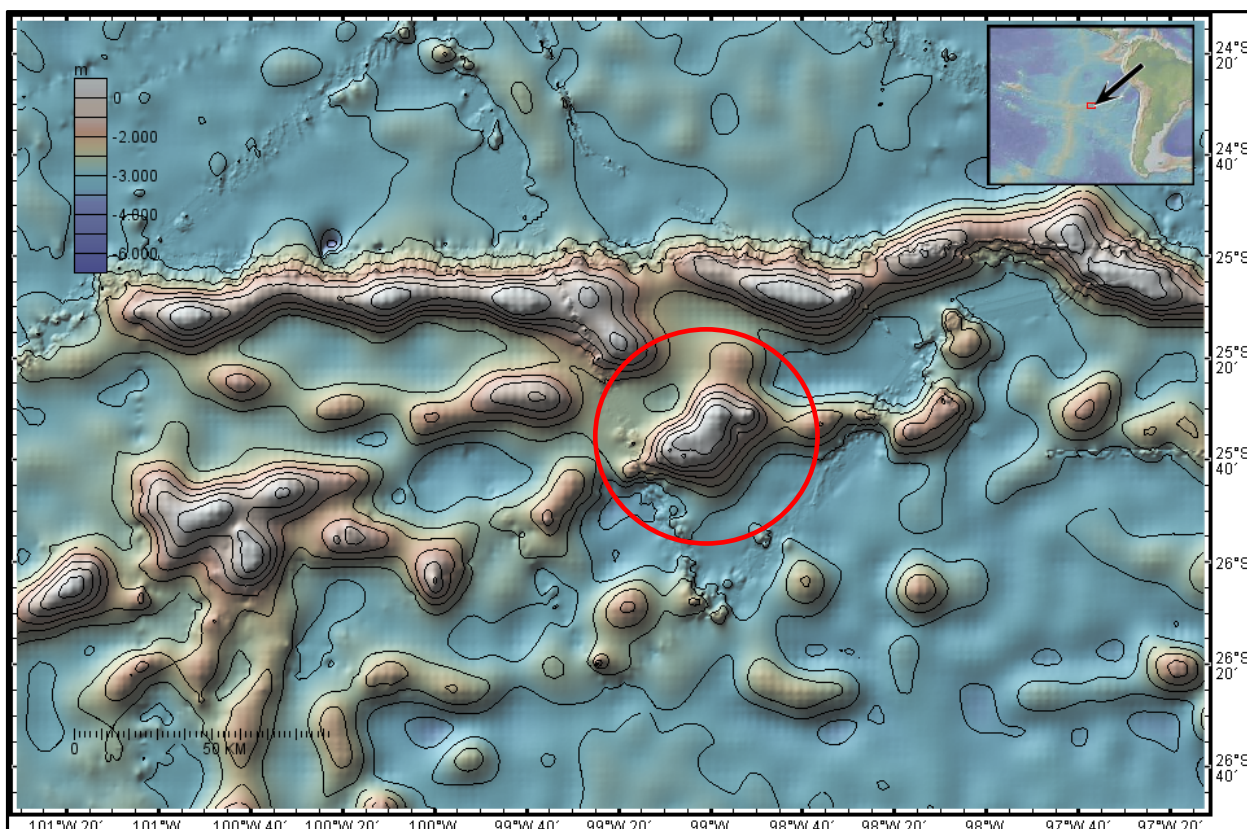


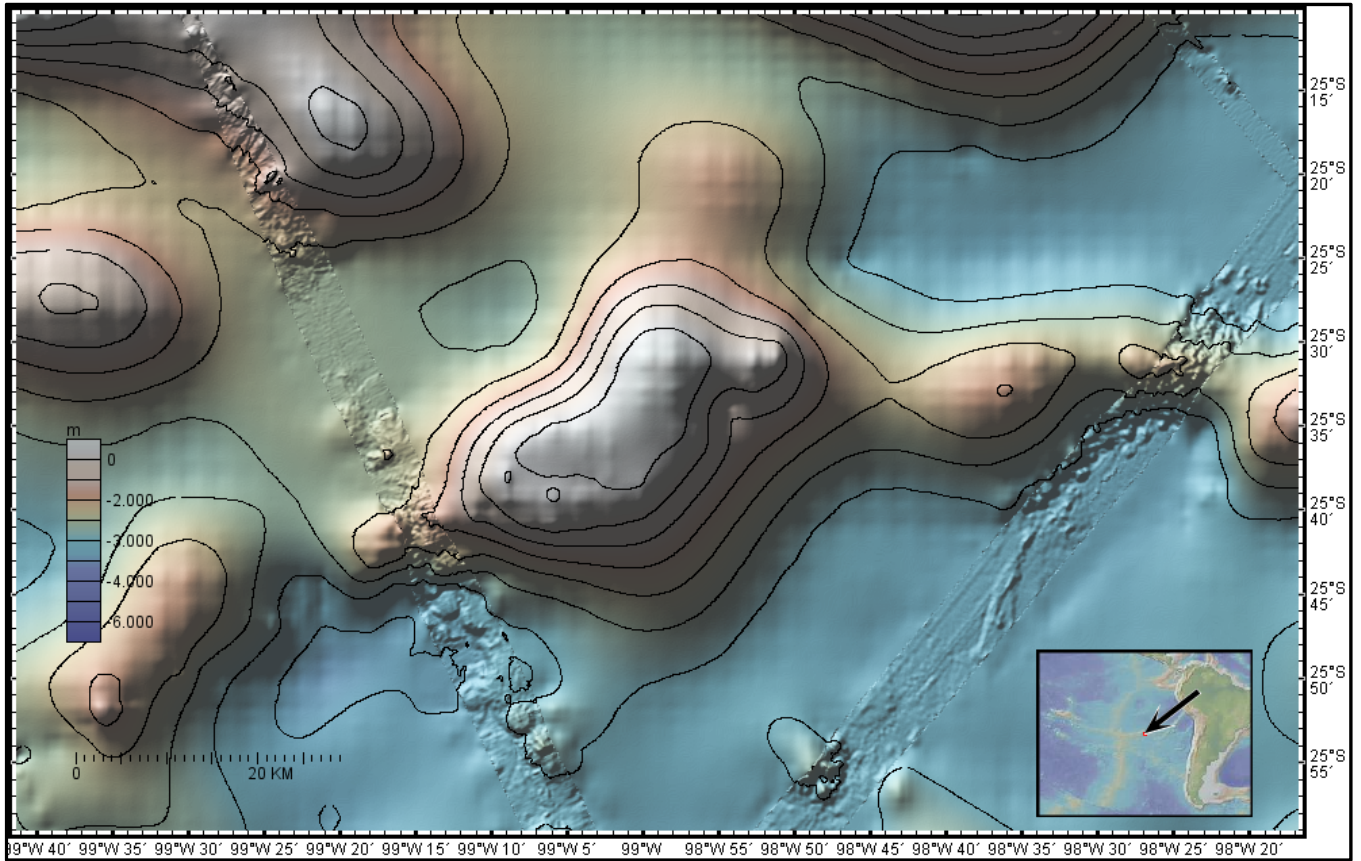
ANNEX 1 to MICHELANGELO GUYOT proposal form.

1. Location map.

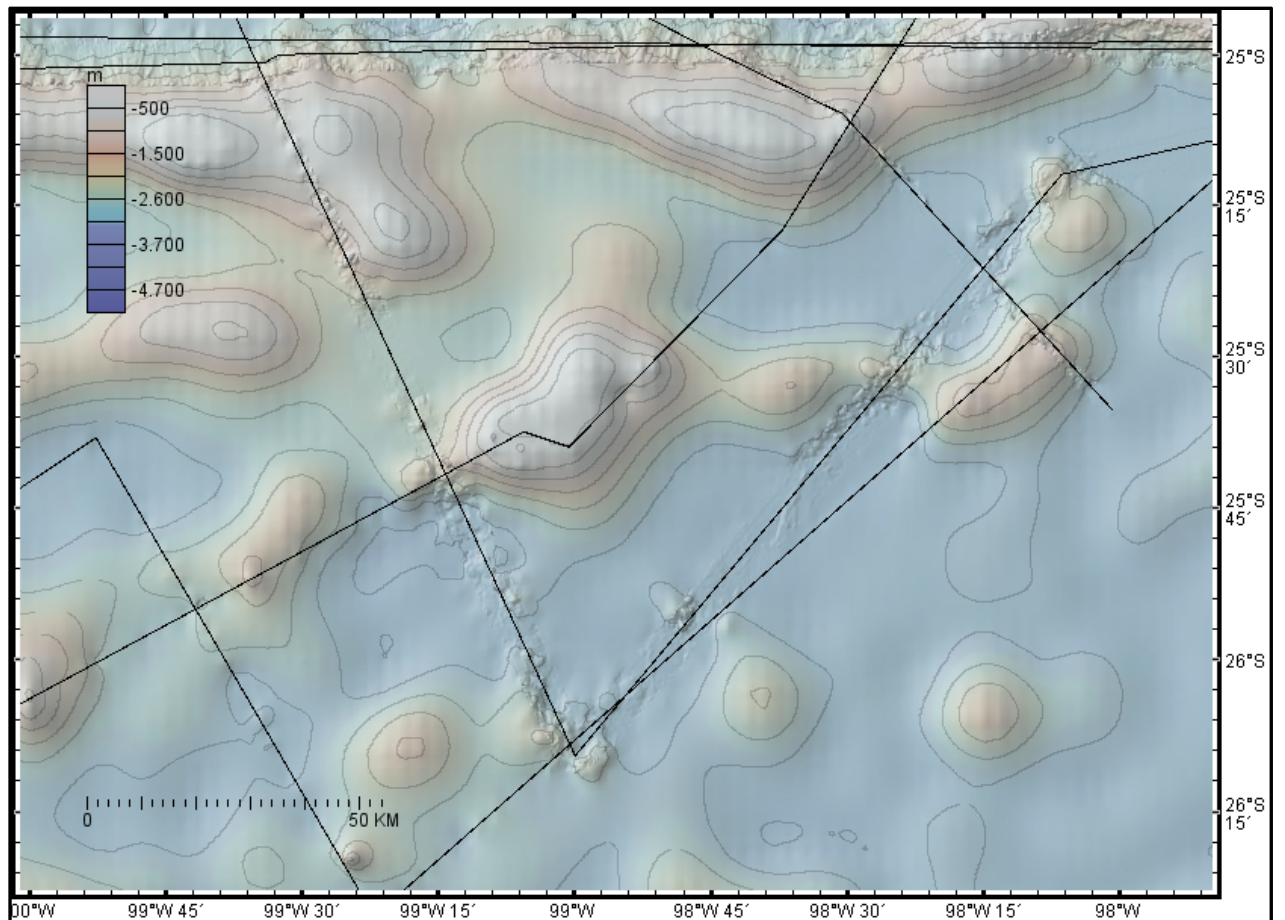


2. Bathymetric map. Contour lines every 500 m.

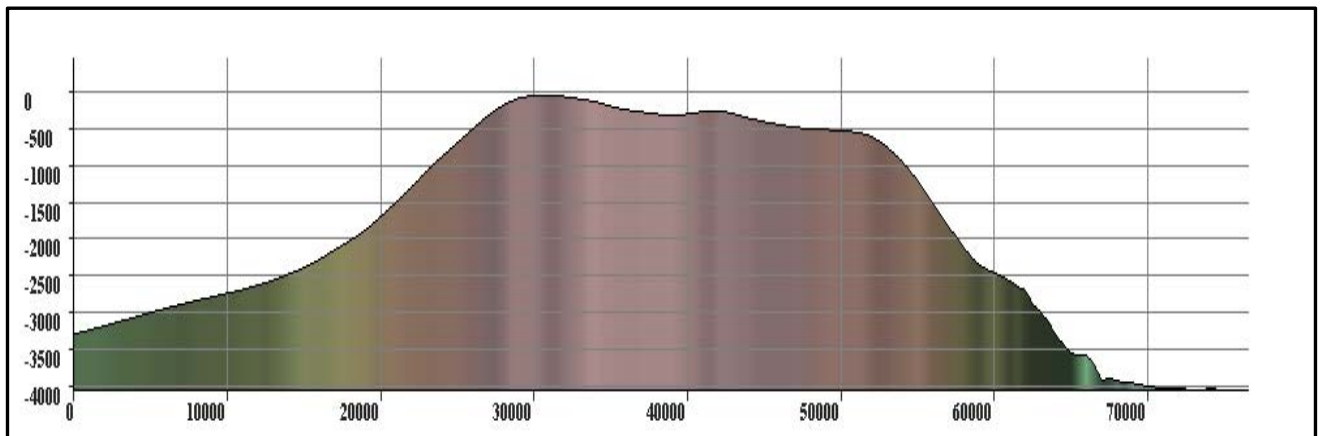
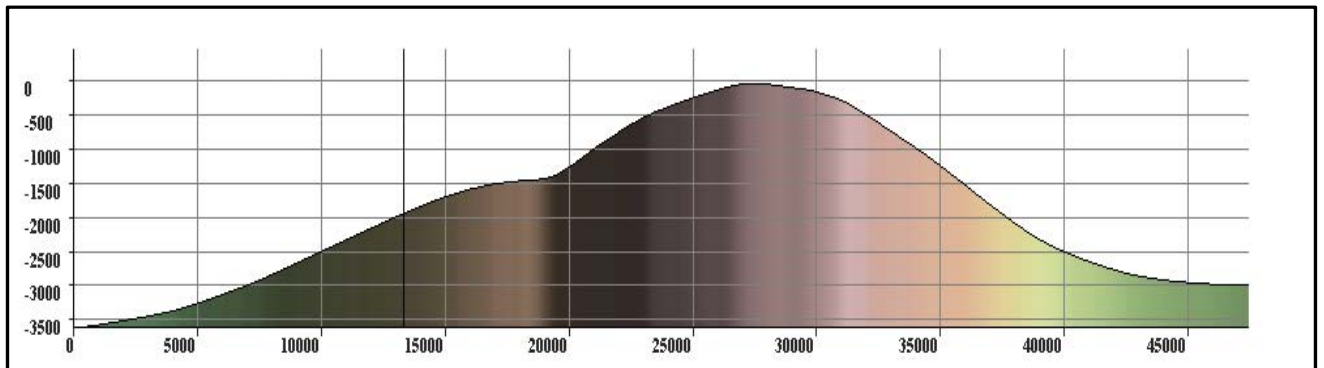
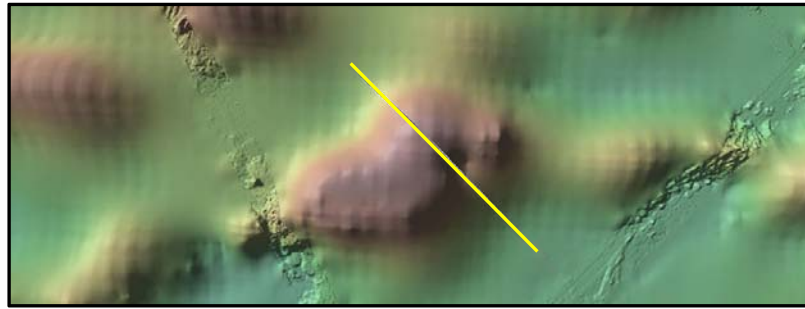




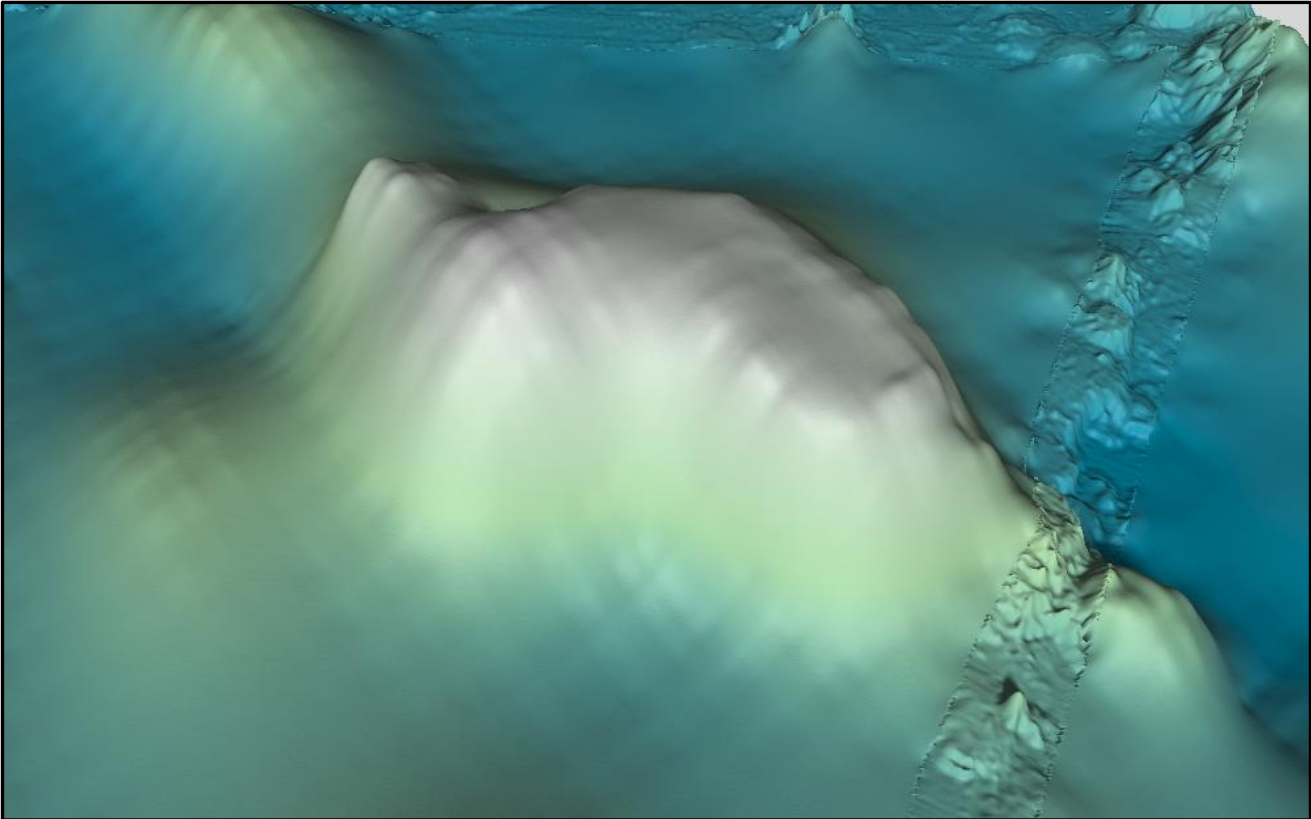
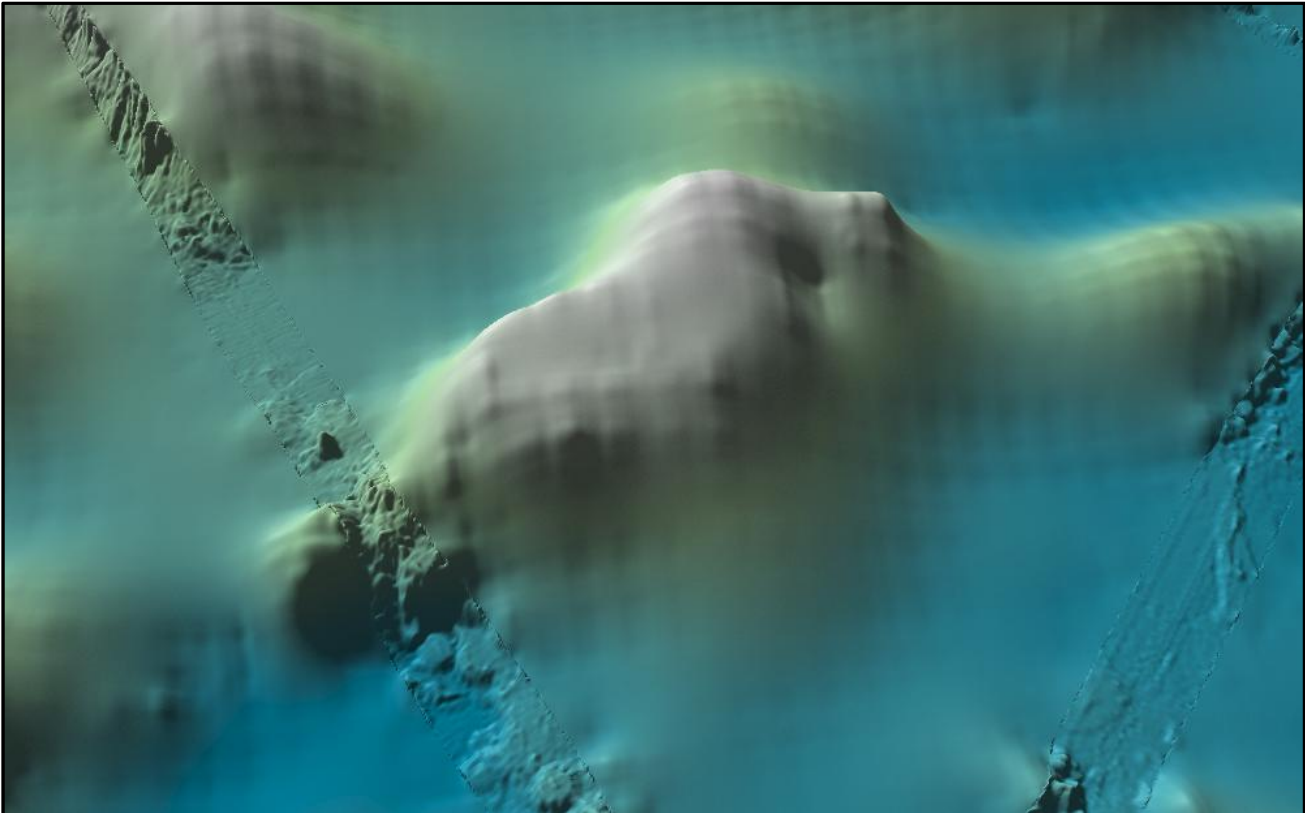
3. Track lines control map.

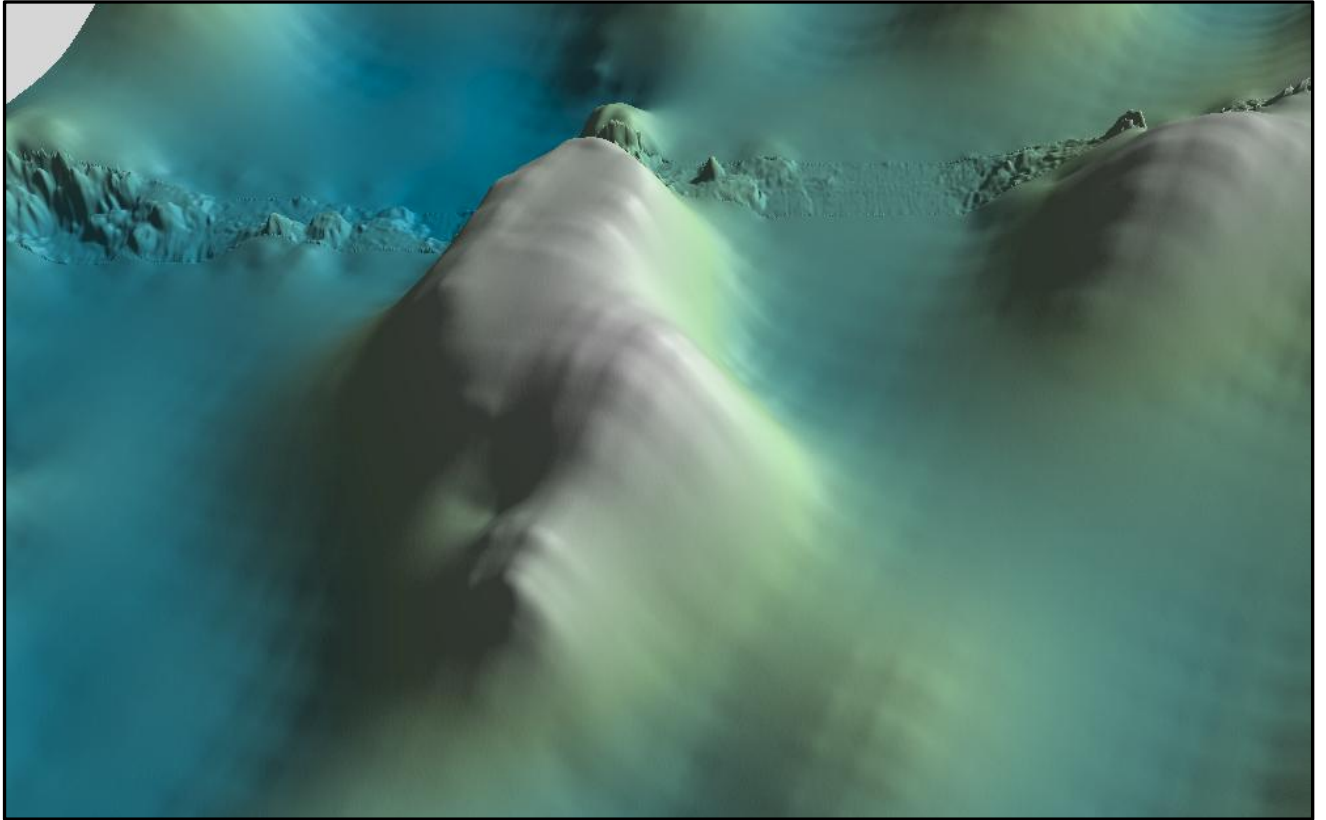


4. Bathymetric profiles.



5. MICHELANGELO SEAMOUNT 3D views.





Credits:

Basemap images and GMRT30 grid were downloaded from www.geomapapp.org

GMTR30 - Ryan, W. B. F., et al. (2009), Global Multi-Resolution Topography synthesis, *Geochem. Geophys. Geosyst.*, 10, Q03014, doi:10.1029/2008GC002332.