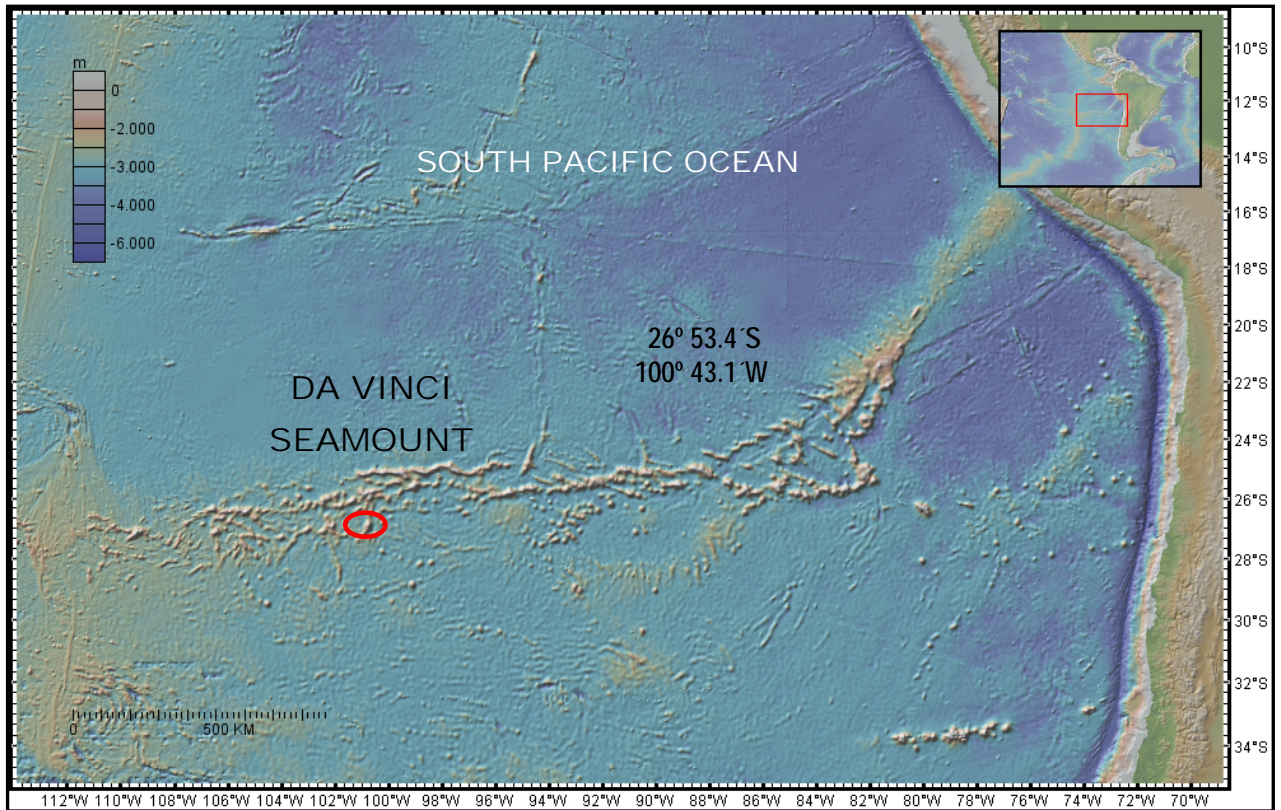
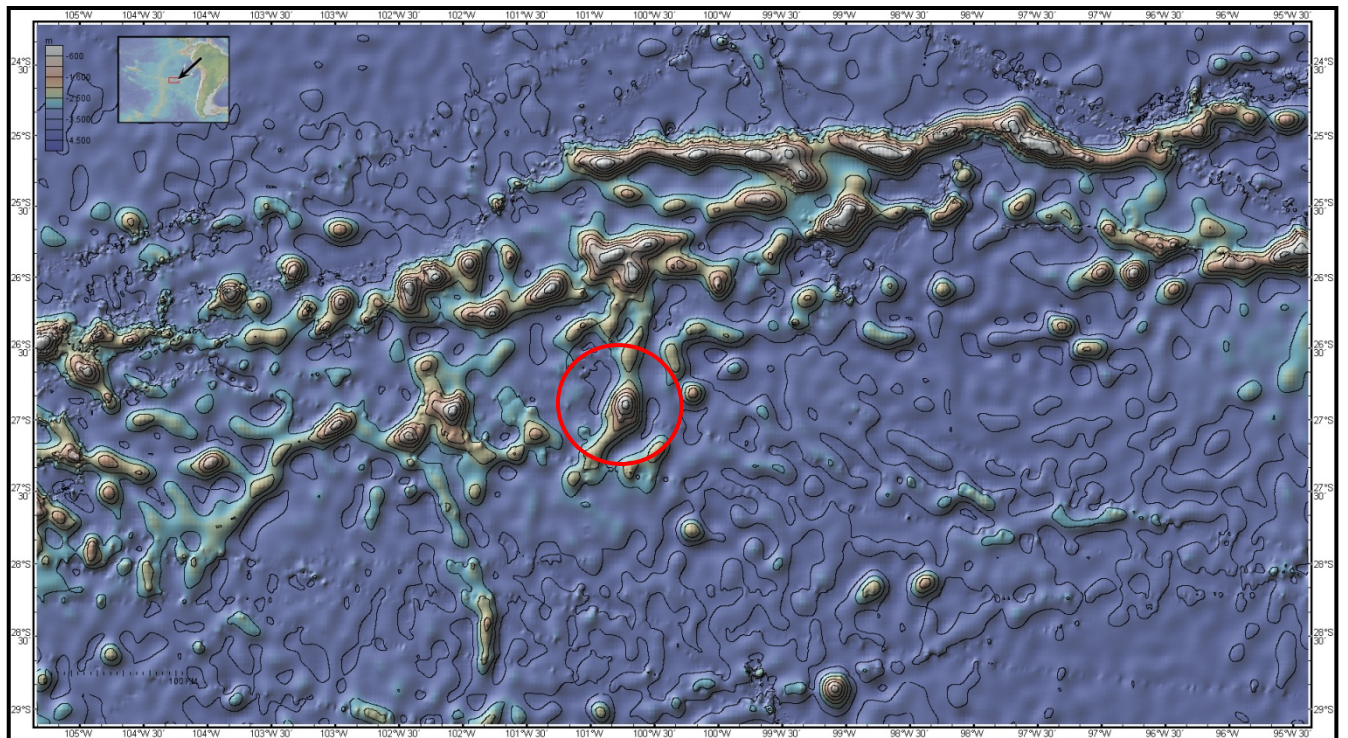


ANNEX 1 to DA VINCI SEAMOUNT proposal form.

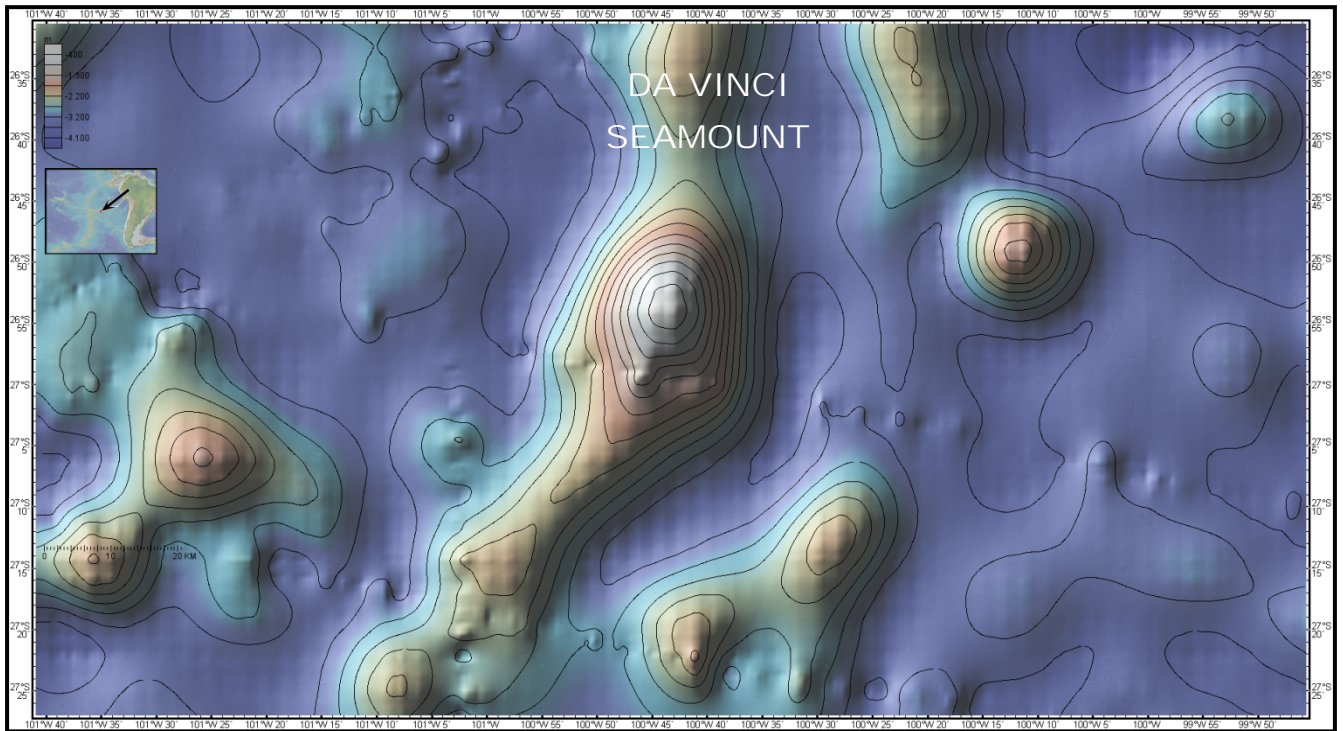
1. Location map.



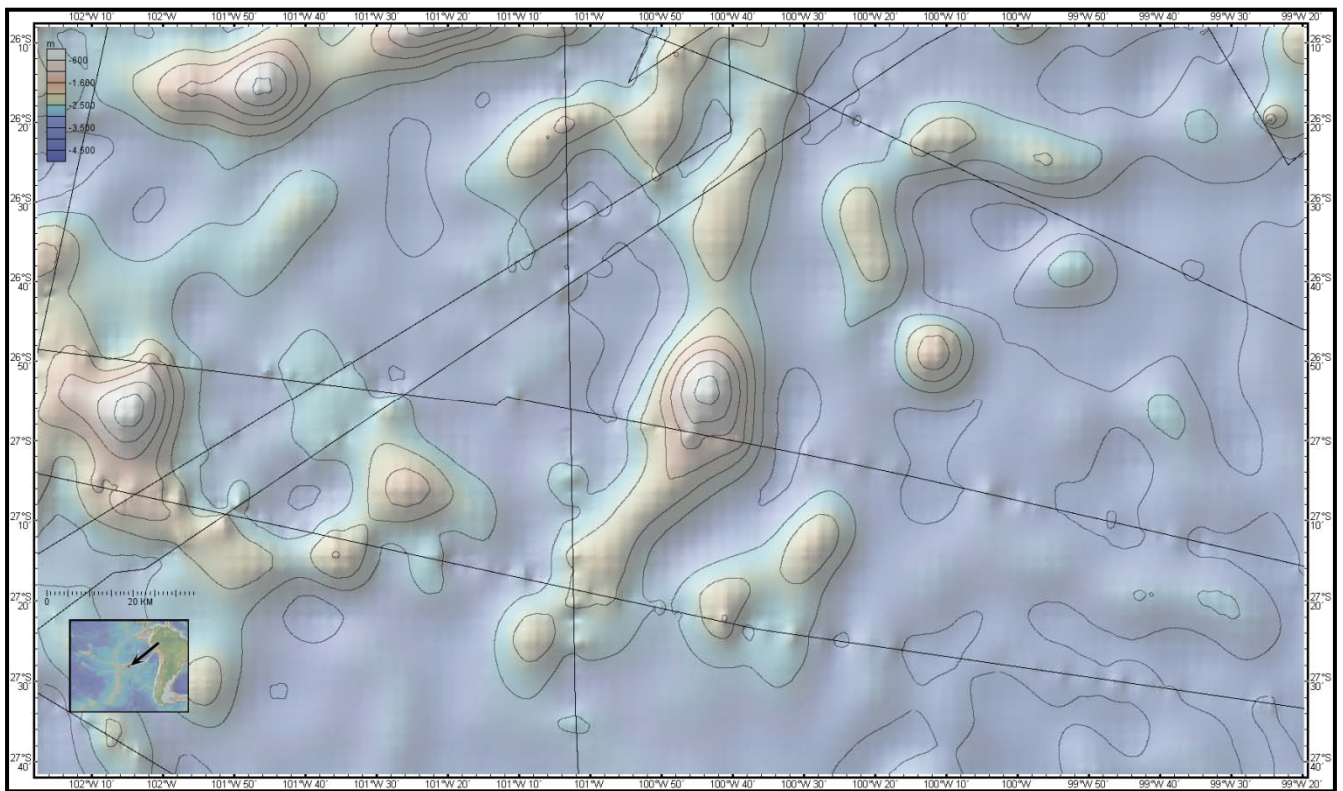
2. Bathymetric map. Contour lines every 500 m.



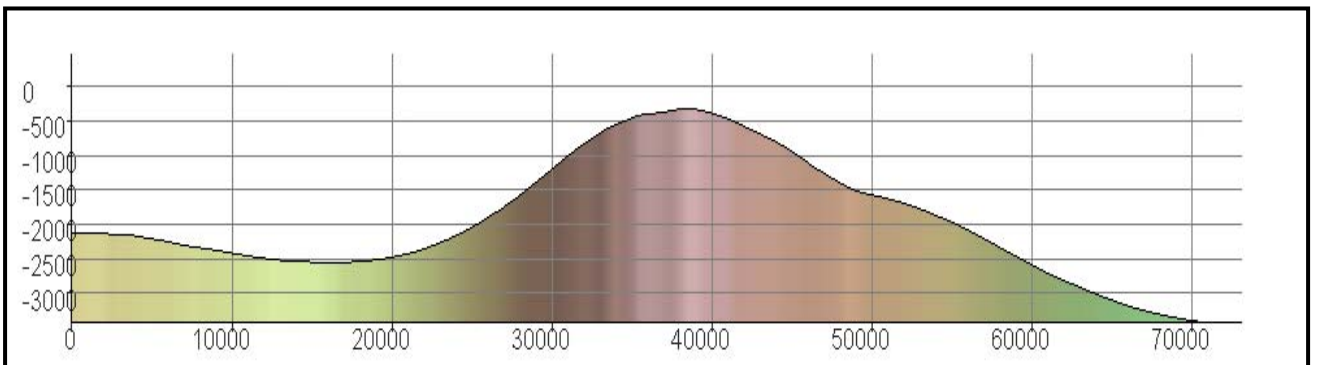
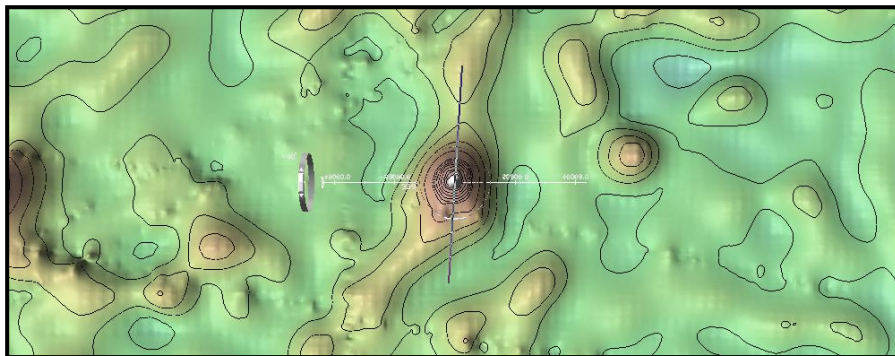
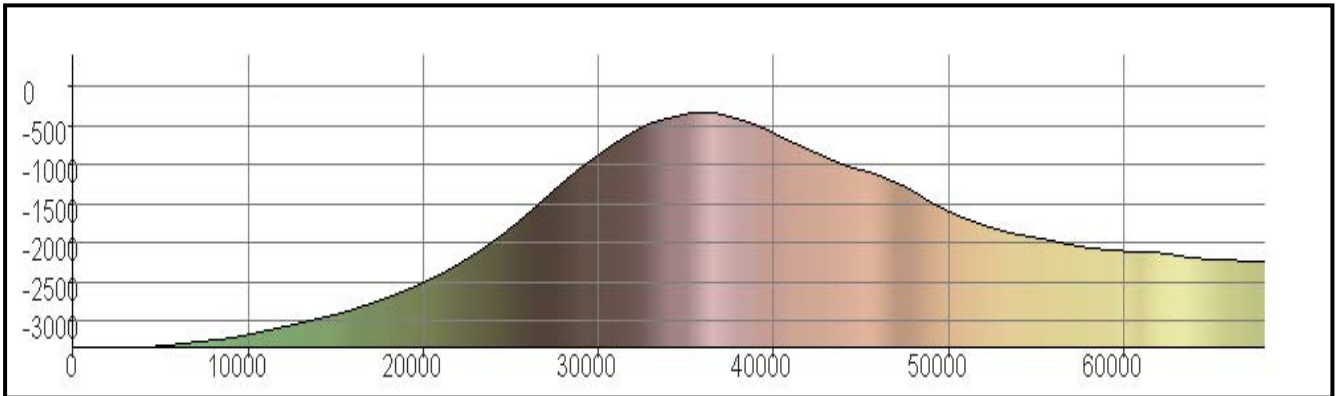
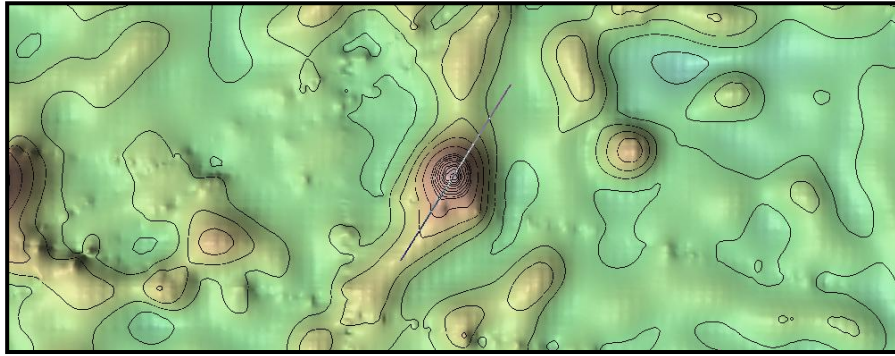
Contour lines every 250 m.

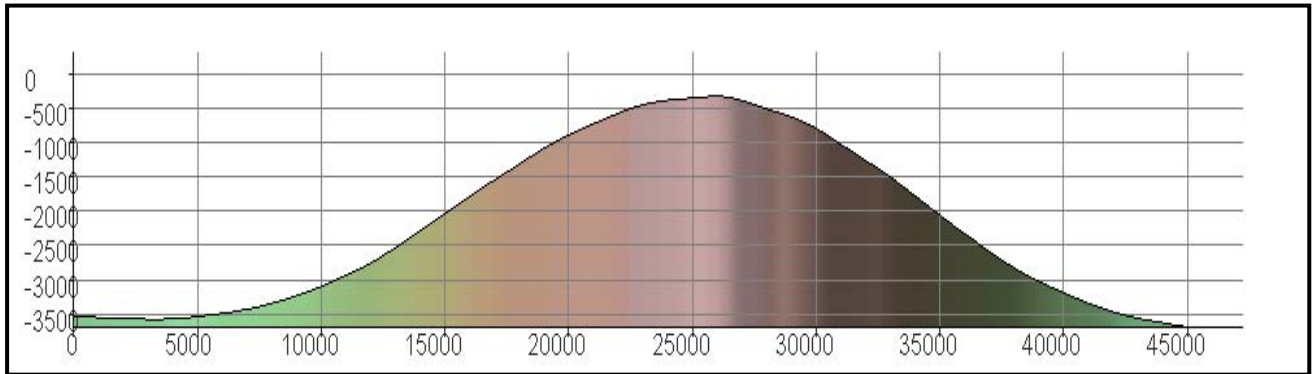
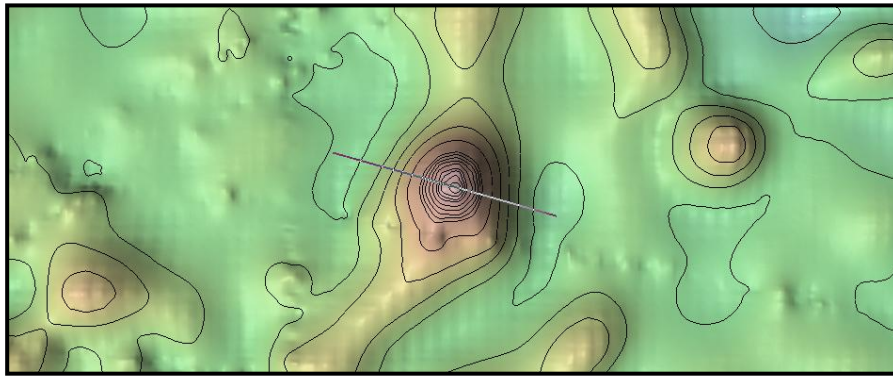


3. Track line control map.

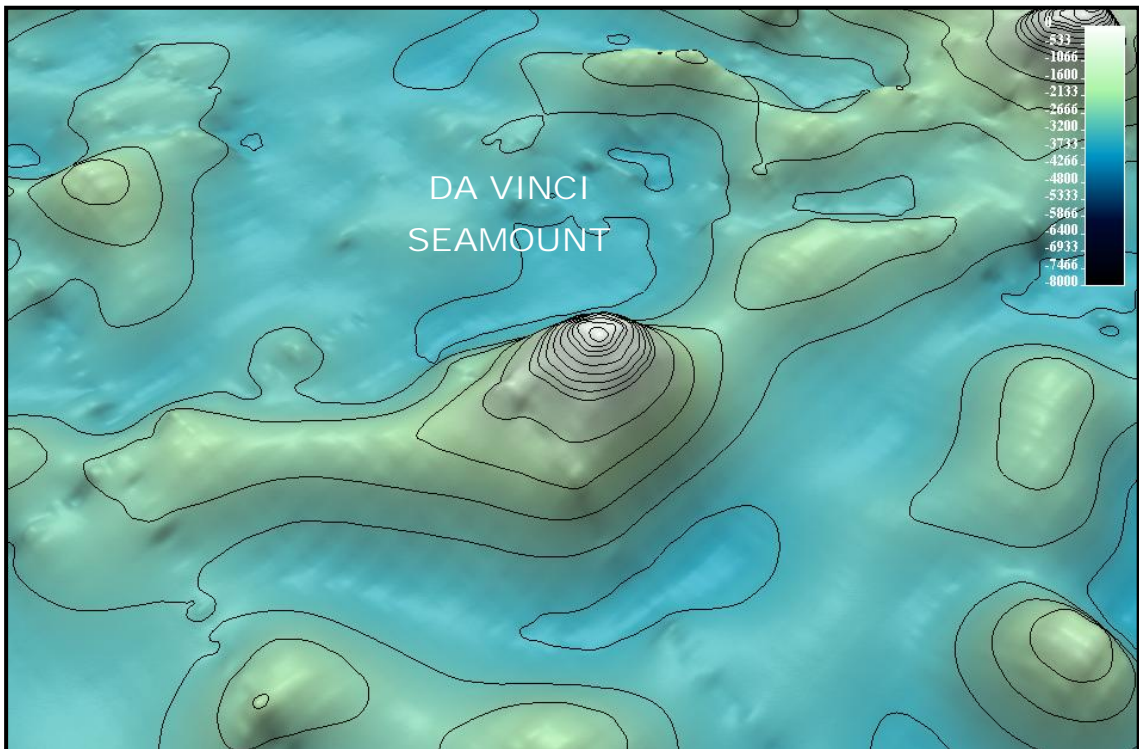


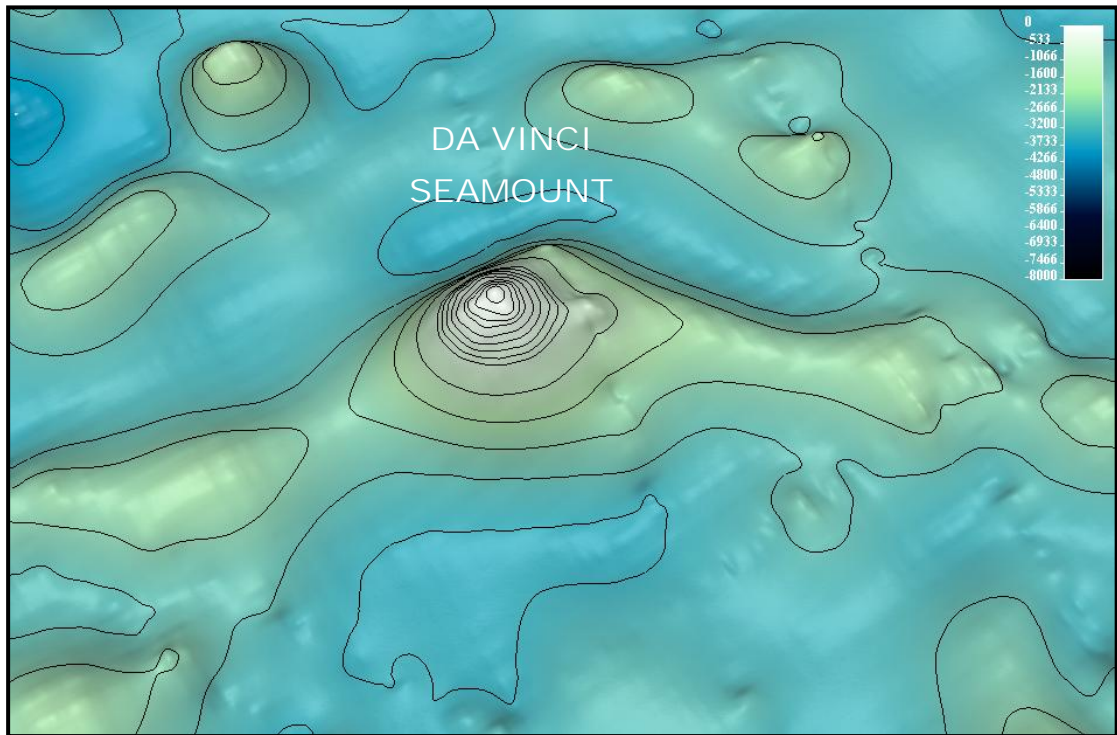
4. Bathymetric profiles.





5. DA VINCI Seamount 3D views.





Credits:

Basemap images and GMRT30 grid were downloaded from www.geomapapp.org

GMTR30 - Ryan, W. B. F., et al. (2009), Global Multi-Resolution Topography synthesis, *Geochem. Geophys. Geosyst.*, 10, Q03014, doi:10.1029/2008GC002332.