

UNDERSEA FEATURE NAME PROPOSAL

Name Proposed:	Tagore Seamount	Ocean or Sea: Atlantic Ocean
-----------------------	-----------------	-------------------------------------

Geometry that best defines the feature (Yes/No):						
Point	Line	Polygon	Multiple points	Multiple lines*	Multiple polygons*	Combination of geometries*
Yes		Yes				

* Geometry should be clearly distinguished when providing the coordinates below.

	Lat.	Long.
Coordinates:	(Central Point) 01°20.05' N	(Central Point) 40°48.32' W
	1°19.67' N	40°56.97' W
	1°15.85' N	40°55.65' W
	1°13.08' N	40°52.90' W
	1°15.08' N	40°49.47' W
	1°14.72' N	40°44.53' W
	1°13.40' N	40°43.45' W
	1°15.08' N	40°40.88' W
	1°16.72' N	40°40.78' W
	1°19.03' N	40°39.35' W
	1°21.50' N	40°37.72' W
	1°24.90' N	40°38.22' W
	1°24.32' N	40°42.85' W
	1°25.90' N	40°45.95' W
	1°24.00' N	40°52.18' W
	1°24.00' N	40°52.40' W

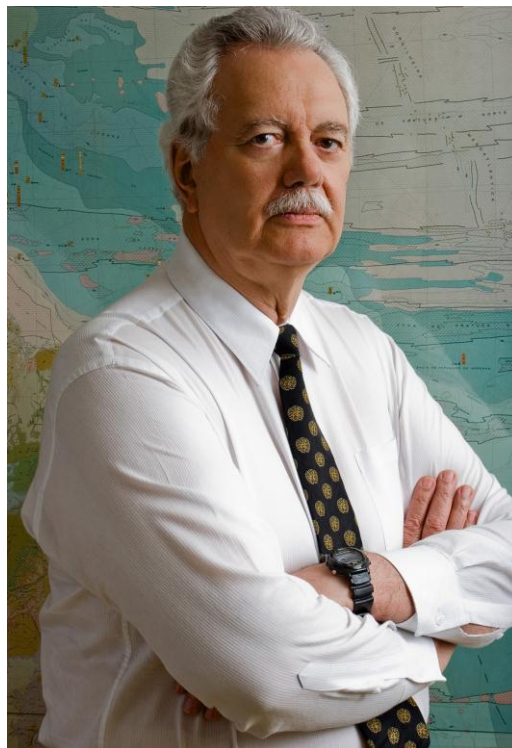
Feature Description:	Maximum Depth: 4200 m	Steepness: 14°
	Minimum Depth : 2251 m	Shape: Conical
	Total Relief:1949 m	Dimension/Size: 37 km x 29 km

Associated Features: Norte Brasileira Ridge

Chart/Map References:	Shown Named on Map/Chart:
	Shown Unnamed on Map/Chart: 1, 19002 (INT22)
	Within Area of Map/Chart:

Reason for Choice of Name: Alexandre Tagore Medeiros de Albuquerque was born in Rio de Janeiro, Brazil in 25th November, 1940 and passed away in 29th March, 2012. In 1964 he degreed in Marine Science at the Brazilian Naval School and since 1975 he began working in technical activities in the Brazilian Hydrographic Service (Directorate of Hydrography and Navigation). During 1986-1989 he was Under-Secretary of the Inter-Ministerial Commission in Brazil for Marine Resources. During 1991-1997 he participated in many groups of experts invited by the United Nations concerning the implementation of the Article 76 of the UNCLOS. Member

of the Commission on the Limits of the Continental Shelf since 1997 he participated in many work group in order to elaborate the Scientific and Technical Guidelines of the Commission on the Limits of the Continental Shelf. He was member of the Sub-commission which examined the Russian Federation submission; Vice-Chairman of the Sub-commission in charge of the examination of the Australian submission; Vice-Chairman of the Sub-commission in charge of the examination of the New Zealand submission; Technical adviser of the Sub-commission in charge of the examination of the submission made by Norway; Member of the Sub-commission in charge of the examination of the submission made by Barbados; Member of the Sub-commission in charge of the examination of the joint submission made by Mauritius and Seychelles; Chairman of the Commission on the Limits of the Continental Shelf (2007 – 2012). He had been working in the Brazilian Continental Shelf Project as a coordinator of the Executive Committee since 1988 until his death.



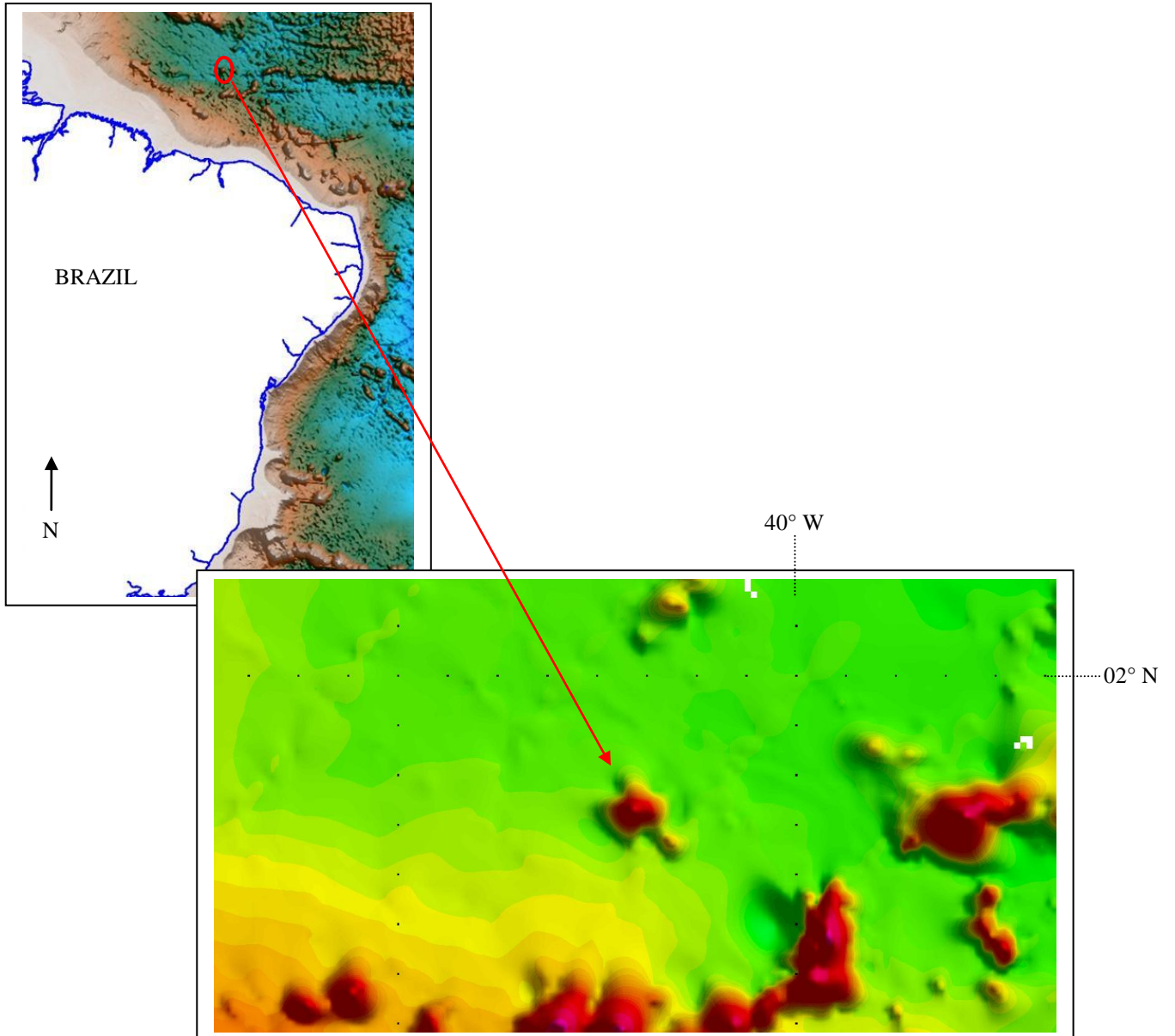
Discovery Facts:

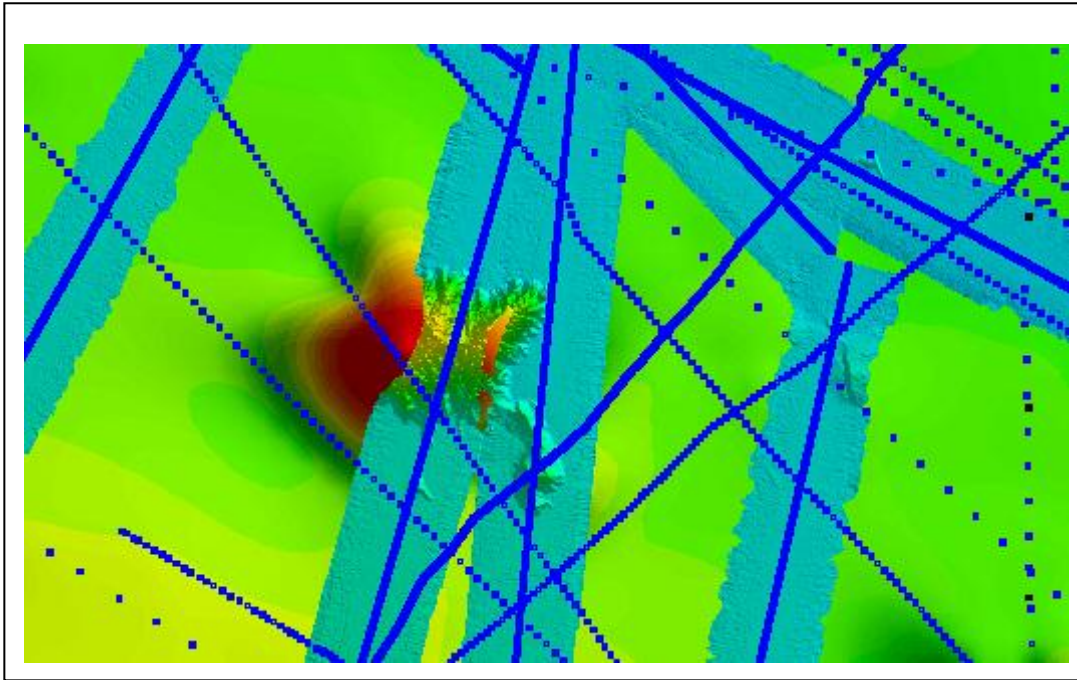
Discovery Date:
Discoverer (Individual, Ship):

**Supporting Survey Data,
including Track Controls:**

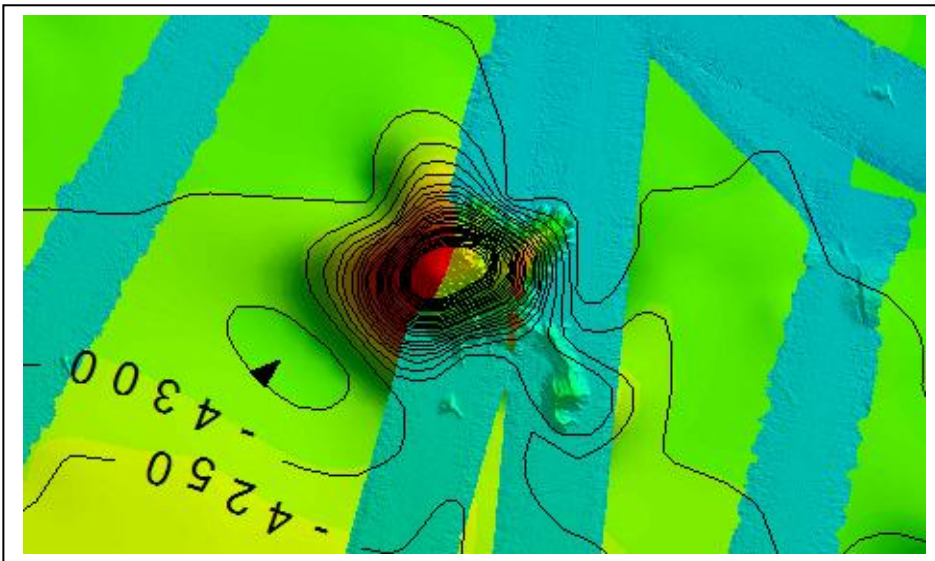
Date of Survey: 2009/2010
Survey Ship: Sea Surveyor
Sounding Equipment: Multibeam -Kongsberg– Simrad EM 122
Type of Navigation: GPS
Estimated Horizontal Accuracy (nm):
Survey Track Spacing:

Location of Tagore Seamount

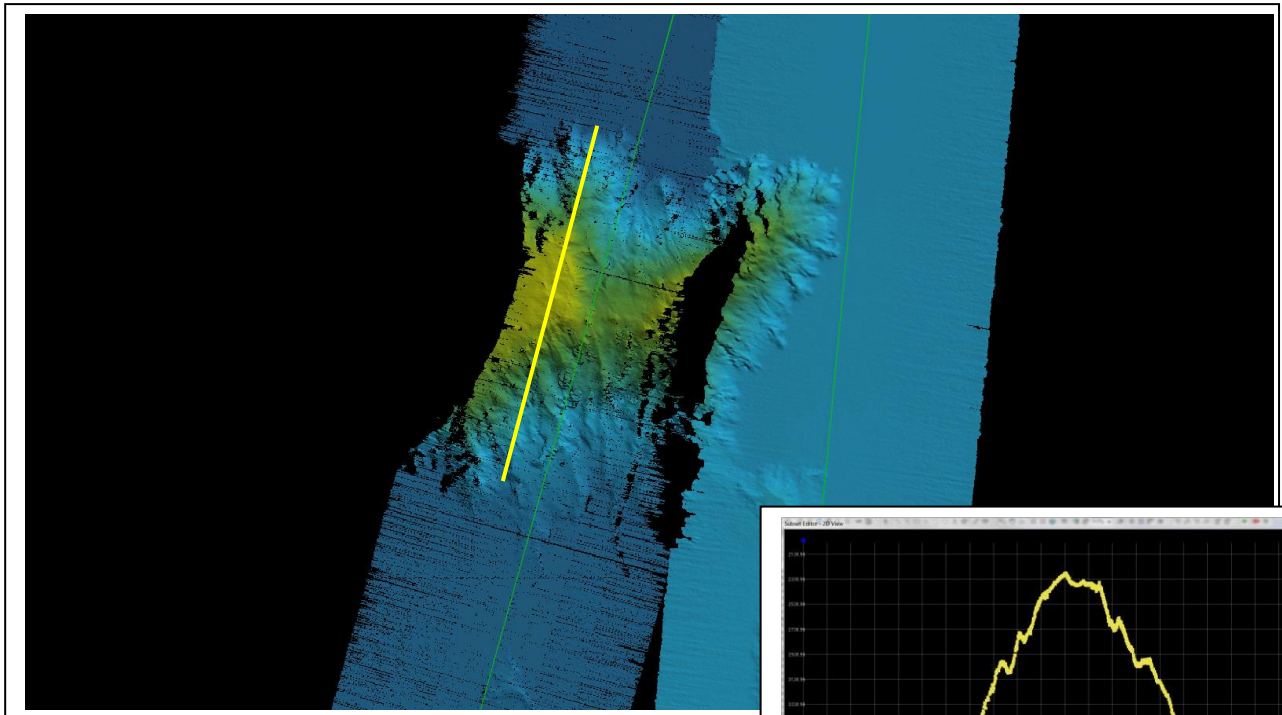




Track line of Multibeam and Singlebeam data



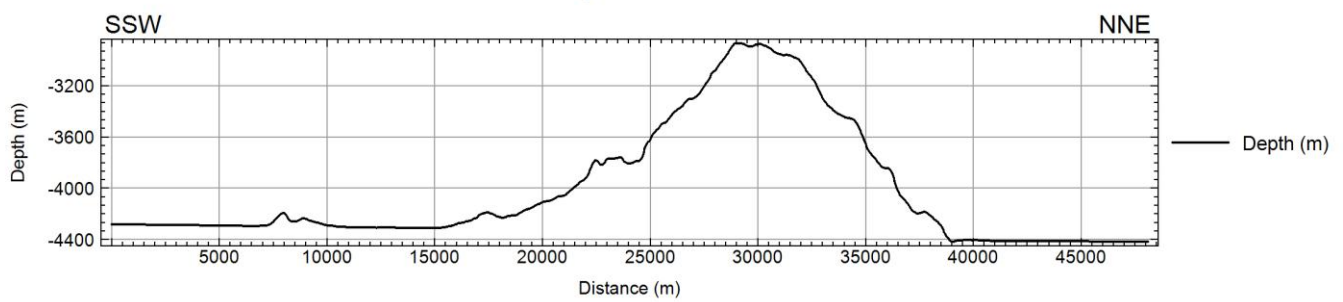
Bathymetric map: interval contour 50m



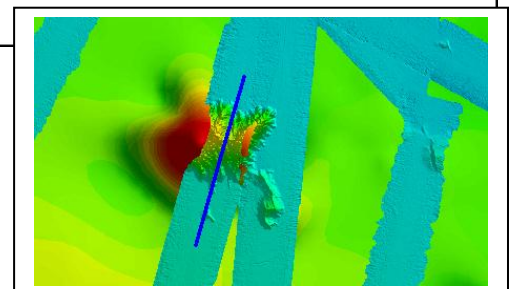
Multibeam data



Bathymetric Profile



LB11



Remarks:

Proposer(s):

Name(s): Directorate of Hydrography and Navigation

Date: August 2012

E-mail: ana.angelica@chm.mar.mil.br

Organization and Address: Barão de Jaceguay Street – Ponta da Armação – Niterói – Rio de Janeiro – Brazil - ZIP code: 24.048-900

Concurrer (name, e-mail, organization and address):