

UNDERSEA FEATURE NAME PROPOSAL
(Sea NOTE overleaf)

Note: The boxes will expand as you fill the form.

Name Proposed:	Weihan Seamount	Ocean or Sea:	Central East Pacific Ocean
-----------------------	------------------------	----------------------	-----------------------------------

Geometry that best defines the feature (Yes/No) :						
Point	Line	Polygon	Multiple points	Multiple lines*	Multiple polygons*	Combination of geometries*
		Yes				

* Geometry should be clearly distinguished when providing the coordinates below.

	Lat. (e.g. 63°32.6'N)	Long. (e.g. 046°21.3'W)
Coordinates:	00° 05.2' S (summit)	101° 24.2' W (summit)
	00° 03.1' S (bottom)	101° 25.0' W (bottom)
	00° 03.3' S	101° 23.7' W
	00° 04.2' S	101° 22.6' W
	00° 05.2' S	101° 22.2' W
	00° 06.0' S	101° 22.4' W
	00° 06.7' S	101° 23.1' W
	00° 07.2' S	101° 24.1' W
	00° 07.1' S	101° 25.4' W
	00° 06.4' S	101° 26.0' W
	00° 05.6' S	101° 26.6' W
	00° 04.6' S	101° 26.5' W
	00° 03.6' S	101° 25.8' W
	00° 03.1' S	101° 25.0' W

Feature Description:	Maximum Depth:	3200m	Steepness :	
	Minimum Depth :	2200m	Shape :	
	Total Relief :	1000m	Dimension/Size :	8km×8km

Associated Features:	
-----------------------------	--

Chart/Map References:	Shown Named on Map/Chart:	
	Shown Unnamed on Map/Chart:	GEBCO 5.07
	Within Area of Map/Chart:	

Reason for Choice of Name (if a person, state how associated with the feature to be named):	The word "Weihan" is quoted from a poem in <i>the Book of Songs</i> (a collection of poems in ancient Chinese literature). It means backbone of the country.
--	--

Discovery Facts:	Discovery Date:	Oct.2009
	Discoverer (Individual, Ship):	R/V Dayang Yihao

Supporting Survey Data, including Track Controls:	Date of Survey:	Oct.2009
	Survey Ship:	R/V Dayang Yihao
	Sounding Equipment:	Multi-beam sounding system (SeaBeam 2112.360)
	Type of Navigation:	StarFire-2050M WAD DGPS
	Estimated Horizontal Accuracy (nm):	<=0.0054nm

	Survey Track Spacing:	1.2nm
Supporting material can be submitted as Annex in analog or digital form.		

Proposer(s):	Name(s):	Zhanhai ZHANG
	Date:	22 Sept. 2012
	E-mail:	heyunxu@hotmail.com
	Organization and Address:	State Oceanic Administration, China No.1 Fuxingmenwai Ave. Beijing

Remarks:	
-----------------	--

Attachments:

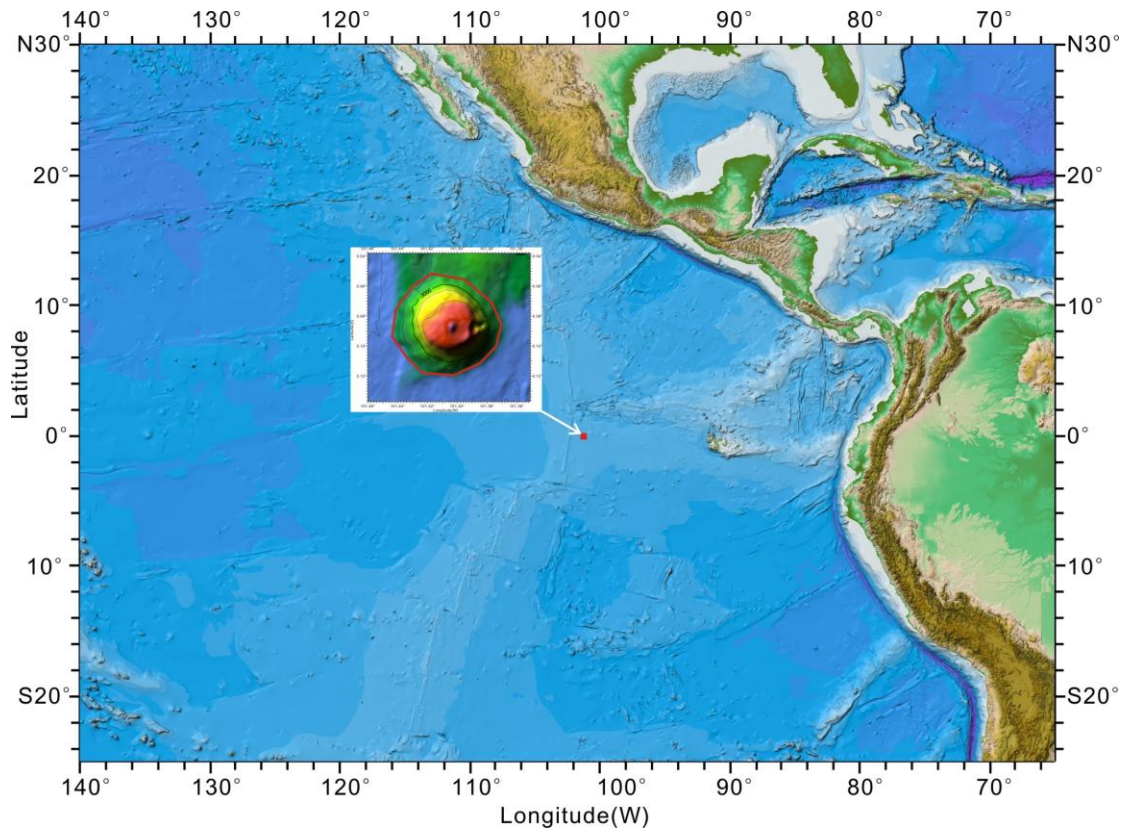


Fig.1 Index map showing the location of the Weihan Seamount

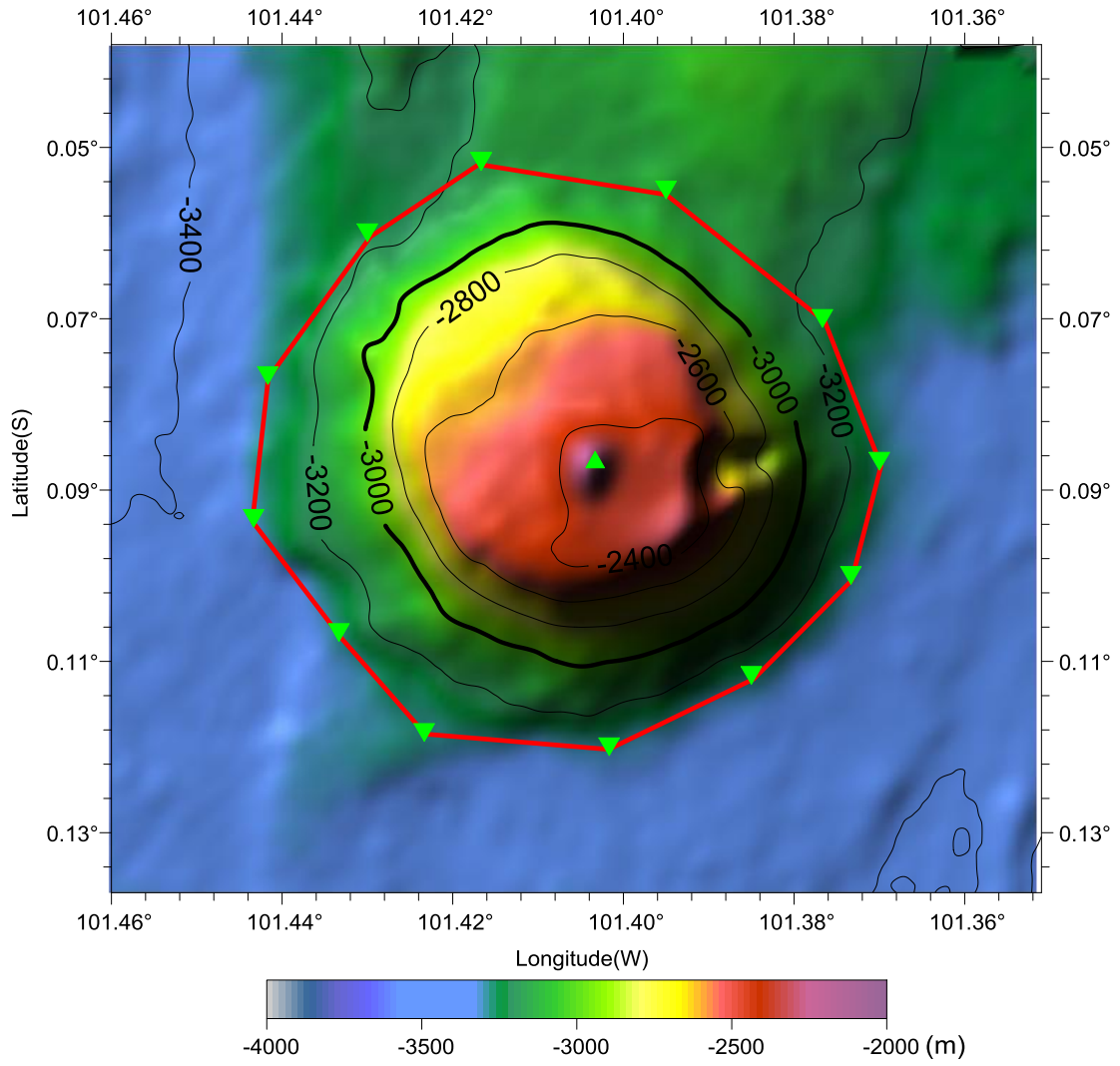


Fig.2 Bathymetric map of the Weihan Seamount. (Contours are in 200 m)

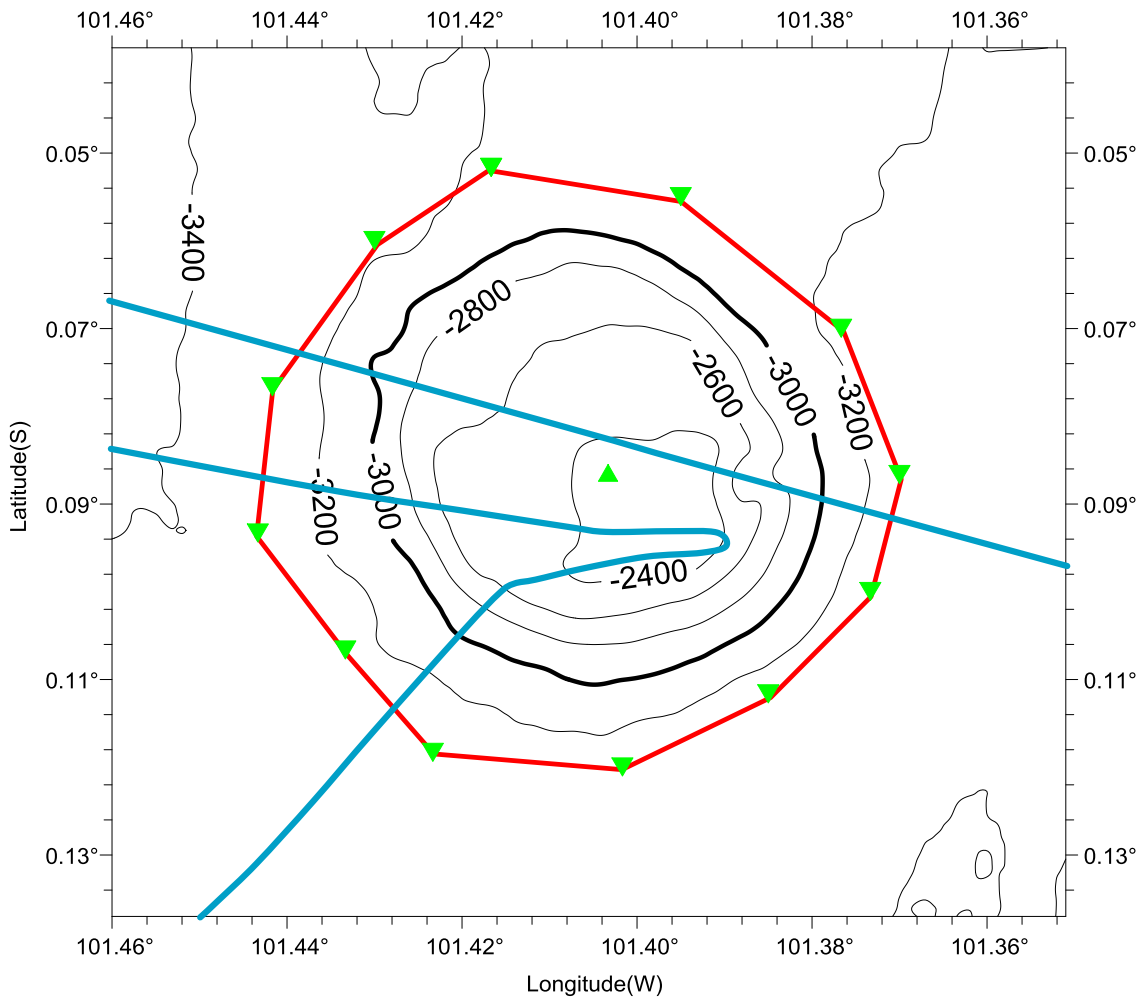


Fig.3 Bathymetric map of the Weihan Seamount, showing track lines. (Contours are in 200 m)

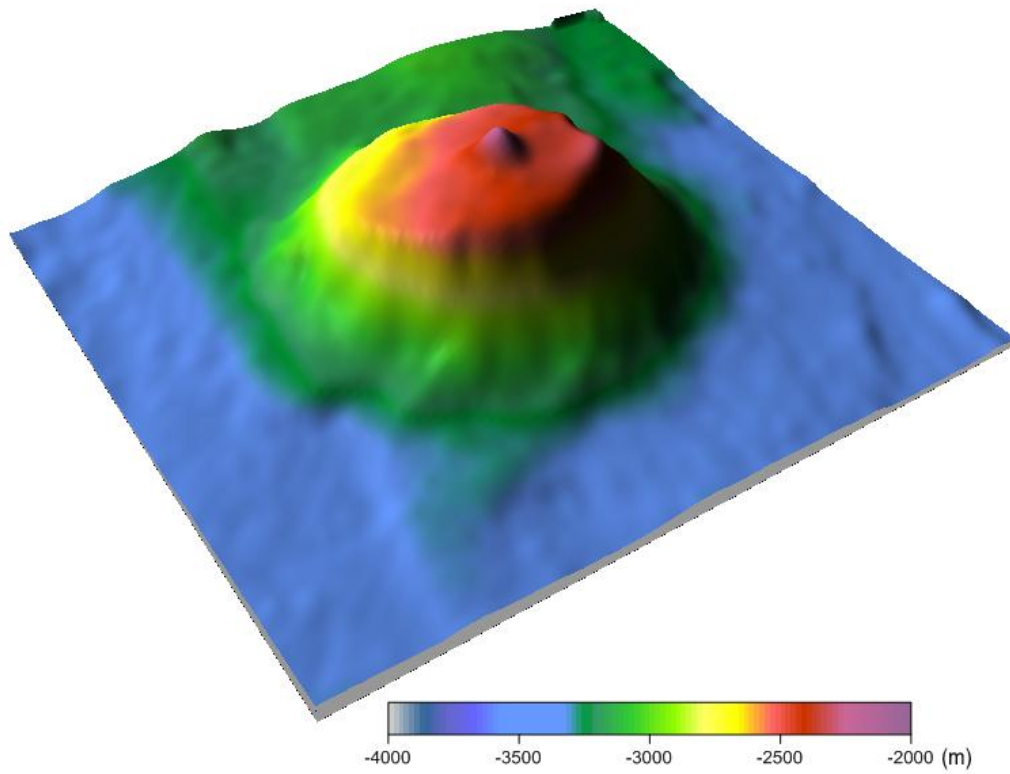


Fig.4 3-D bathymetric map of the Weihai Seamount

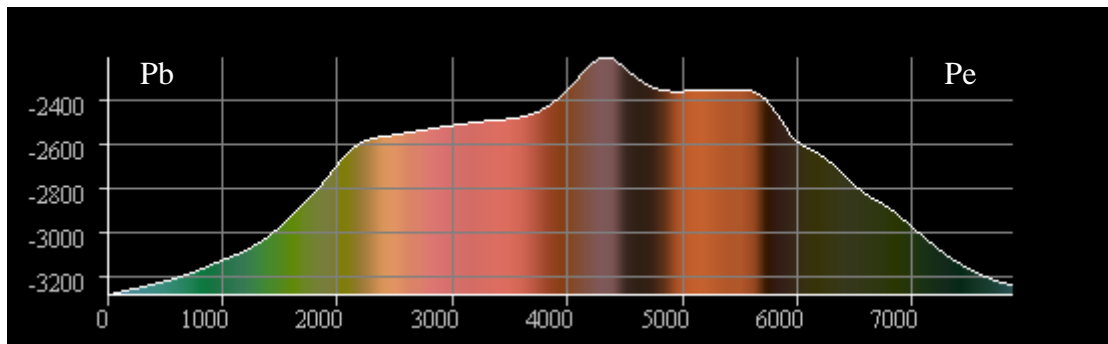
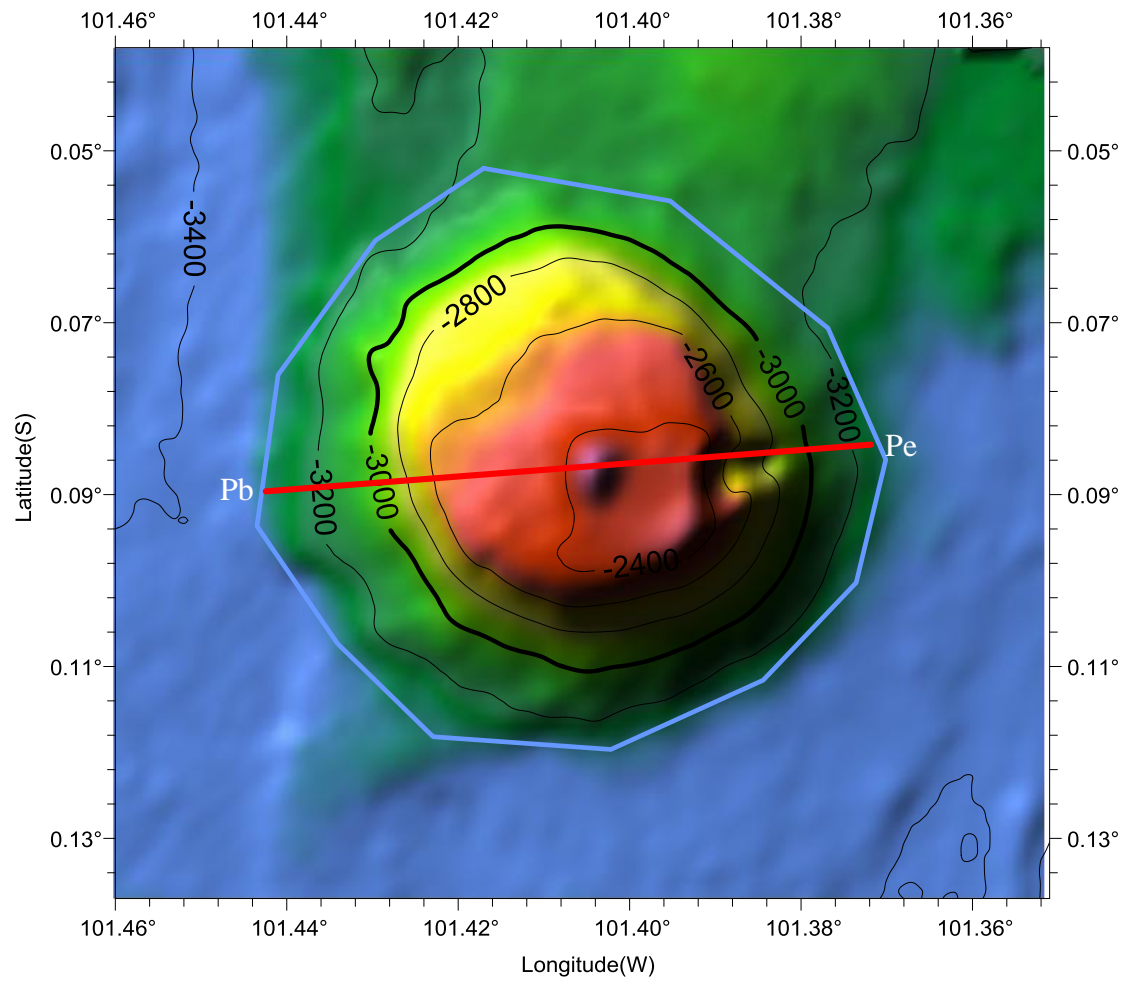


Fig.5 Profiles bathymetric map of the Weihan Seamount