

**UNDERSEA FEATURE NAME PROPOSAL**  
(Sea NOTE overleaf)

Note: The boxes will expand as you fill the form.

<b>Name Proposed:</b>	<b>Qiaoyue Seamount</b>	<b>Ocean or Sea:</b>	<b>South Indian Ocean</b>
-----------------------	-------------------------	----------------------	---------------------------

<b>Geometry</b> that best defines the feature (Yes/No) :						
Point	Line	Polygon	Multiple points	Multiple lines*	Multiple polygons*	Combination of geometries*
		Yes				

\* Geometry should be clearly distinguished when providing the coordinates below.

	Lat. (e.g. 63°32.6'N)	Long. (e.g. 046°21.3'W)
<b>Coordinates:</b>	37° 20.0' S (summit)	052° 07.0' E (summit)
	37° 12.2' S (bottom)	052° 12.2' E (bottom)
	37° 13.6' S	052° 06.0' E
	37° 16.0' S	052° 00.5' E
	37° 16.0' S	051° 54.3' E
	37° 16.5' S	051° 51.7' E
	37° 18.8' S	051° 51.4' E
	37° 21.4' S	051° 54.4' E
	37° 24.3' S	052° 00.0' E
	37° 24.3' S	052° 07.2' E
	37° 25.1' S	052° 13.6' E
	37° 23.1' S	052° 17.1' E
	37° 20.6' S	052° 18.5' E
	37° 17.1' S	052° 18.4' E
	37° 14.2' S	052° 17.2' E
37° 12.0' S	052° 12.1' E	

<b>Feature Description:</b>	Maximum Depth:	4200m	Steepness :	
	Minimum Depth :	1400m	Shape :	
	Total Relief :	2800m	Dimension/Size :	43km×24km

**Associated Features:**

<b>Chart/Map References:</b>	Shown Named on Map/Chart:	
	Shown Unnamed on Map/Chart:	GEBCO 5.09
	Within Area of Map/Chart:	

<b>Reason for Choice of Name</b> (if a person, state how associated with the feature to be named):	The word “Qiaoyue” is from a poem in “the Book of Songs” (a collection of poems in ancient Chinese Literature), which means high mountains. Qiaoyue Seamount is named for its height.
--	---

<b>Discovery Facts:</b>	Discovery Date:	Feb. 2009
	Discoverer (Individual, Ship):	R/V Dayang Yihao

<b>Supporting Survey Data, including Track Controls:</b>	Date of Survey:	Feb. 2009
	Survey Ship:	R/V Dayang Yihao
	Sounding Equipment:	Multi-beam sounding system (EM120)
	Type of Navigation:	StarFire-2050M WAD DGPS

	Estimated Horizontal Accuracy (nm):	<=0.0054nm
	Survey Track Spacing:	2.4nm
	Supporting material can be submitted as Annex in analog or digital form.	

<b>Proposer(s):</b>	Name(s):	Zhanhai ZHANG
	Date:	22 Sept. 2012
	E-mail:	heyunxu@hotmail.com
	Organization and Address:	State Oceanic Administration, China No.1 Fuxingmenwai Ave. Beijing

<b>Remarks:</b>	
-----------------	--

Attachments:

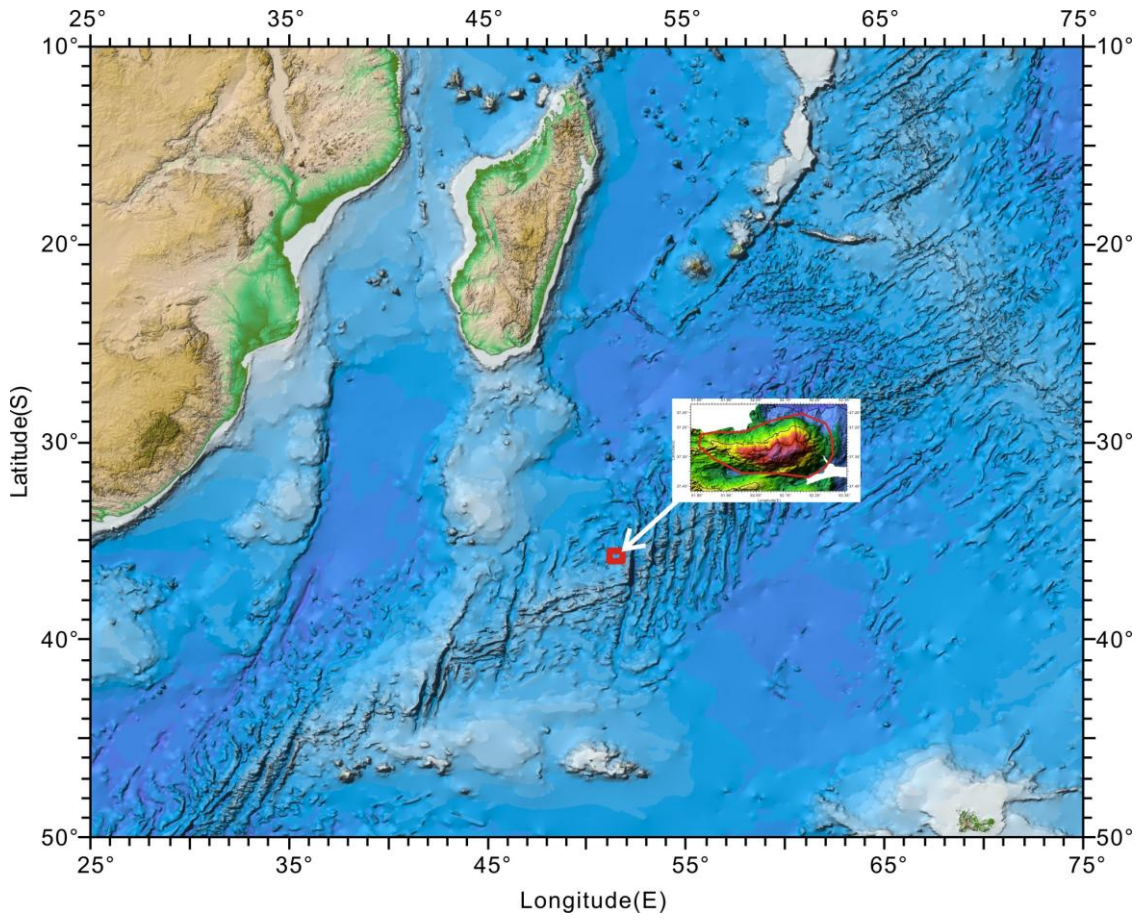


Fig.1 Index map showing the location of the Qiaoyue Seamount.

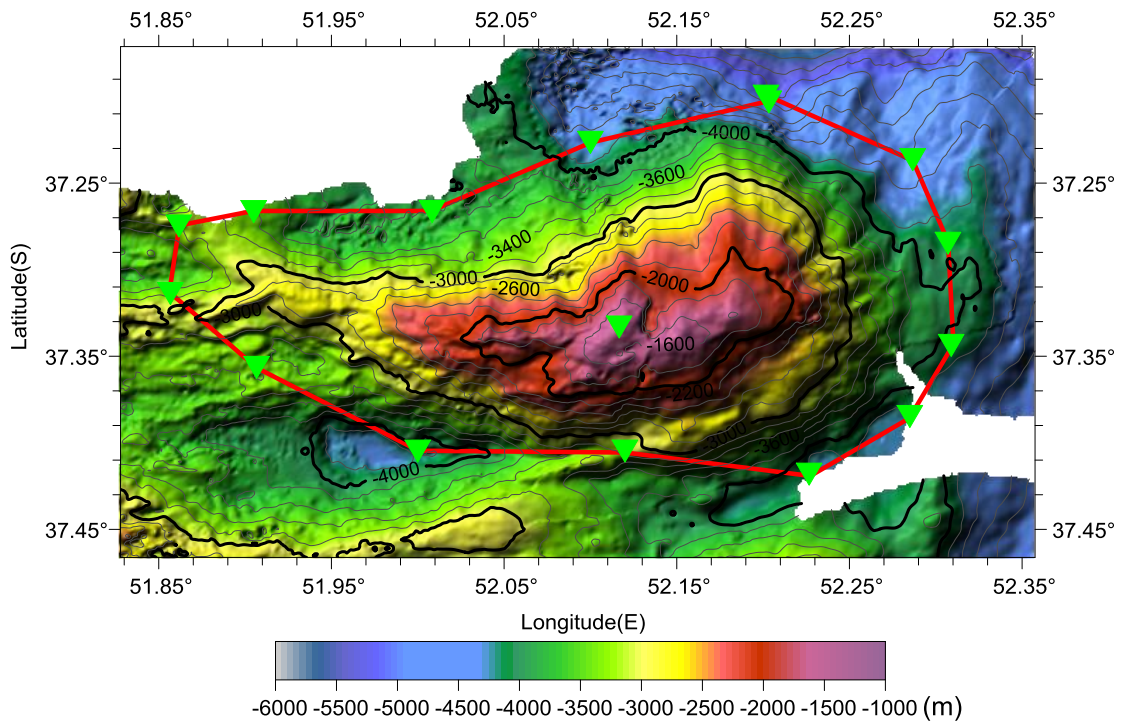


Fig.2 Bathymetric map of the Qiaoyue Seamount. (Contours are in 200 m)

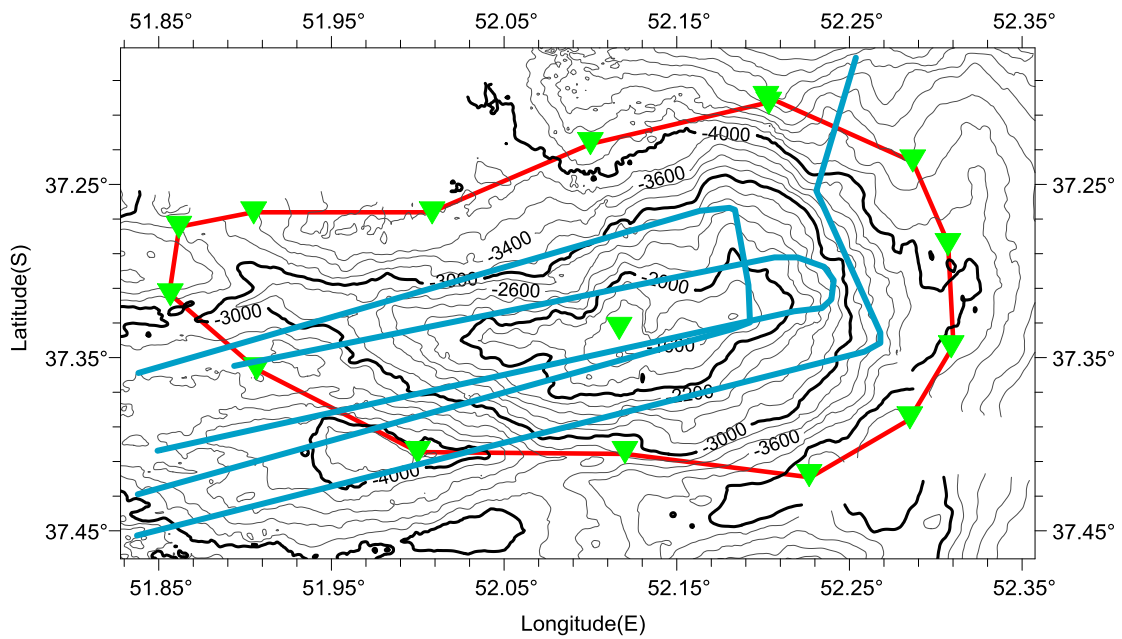


Fig.3 Bathymetric map of the Qiaoyue Seamount, showing track lines. (Contours are in 200 m)

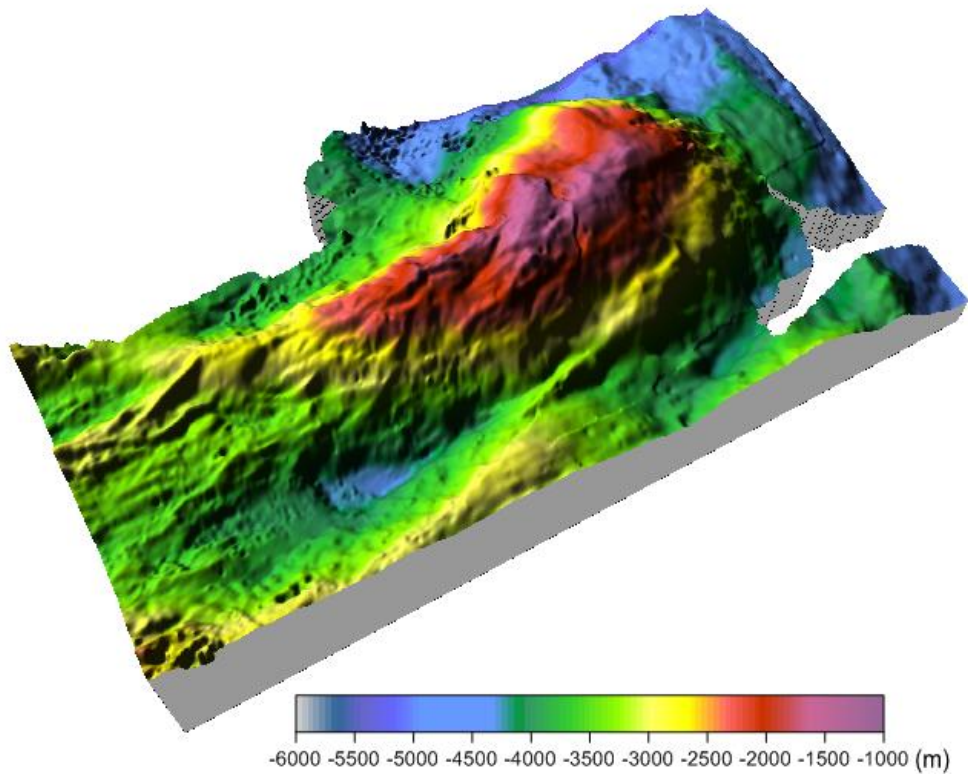


Fig.4 3-D bathymetric map of the Qiaoyue Seamount



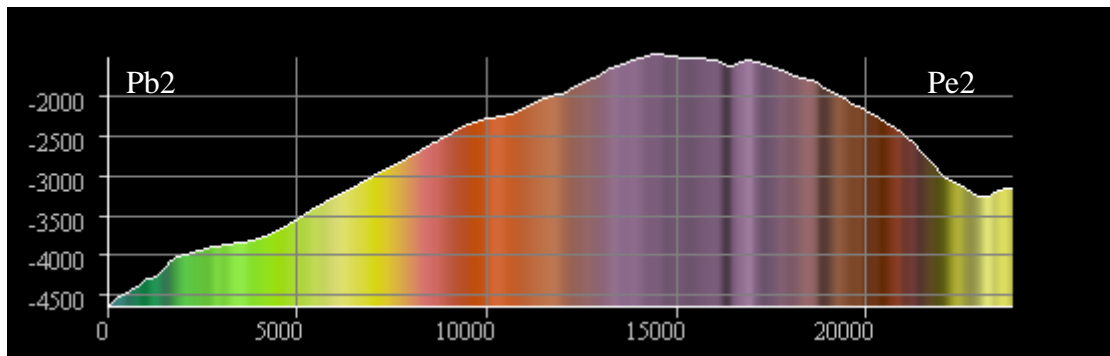
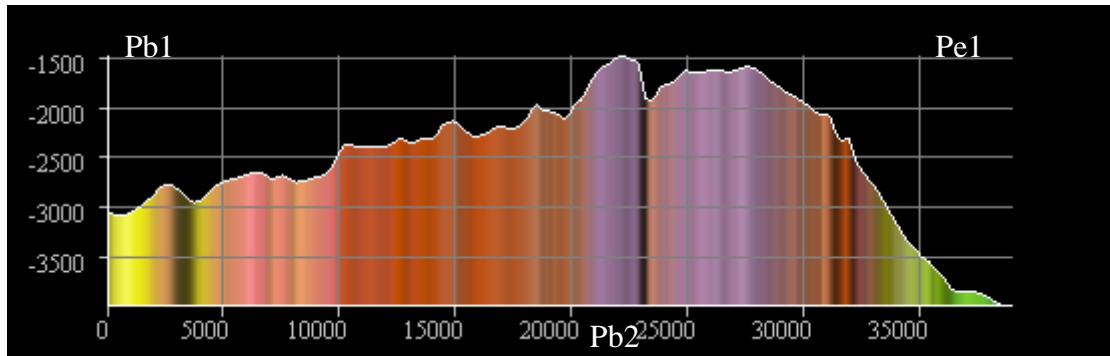
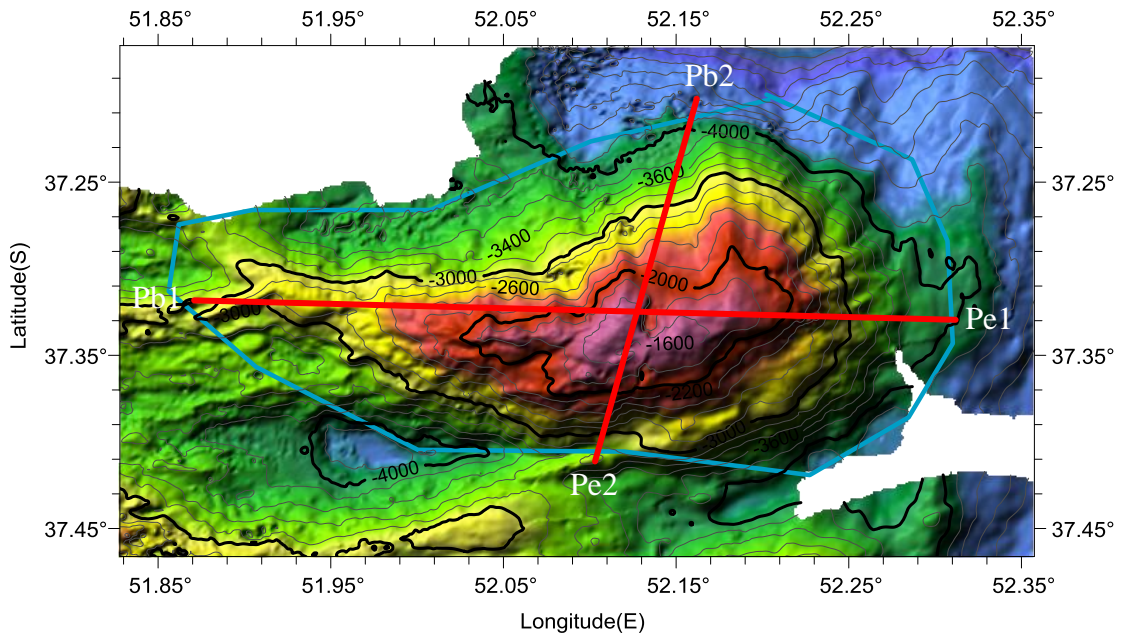


Fig.5 Profiles bathymetric map of the Qiaoyue Seamount