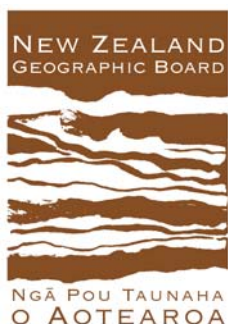


# The 25th International Symposium of the SCUFN, Wellington, New Zealand Symposium Handbook and Programme

22 - 27 October 2012



Land Information  
New Zealand  
*Toitū te whenua*

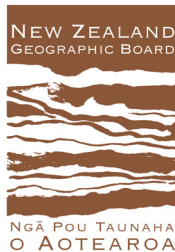


### **BIBLIOGRAPHIC REFERENCE**

The 25<sup>th</sup> International Symposium of the SCUFN, Wellington, New Zealand.  
Symposium Handbook and Programme, 22-27 October 2012, *GNS Science  
Miscellaneous Series* 49. 17 p.

Hammond, K. A. T.; Stagpoole, V. M. (compilers)

## Organisers and Sponsors



### Steering Committee

[Hans-Werner Schenke](#) (chair) Alfred Wegener Institute, Bremerhaven, Germany

[Lisa Taylor](#) (vice chair) NOAA National Geophysical Data Center, Boulder, Colorado, USA

[Michel Huet](#) (secretary) International Hydrographic Bureau, Monaco

[Adam Greenland](#) (local host) LINZ, Wellington, New Zealand

[Vaughan Stagpoole](#) (local host) GNS Science, Lower Hutt, New Zealand

### Additional Organising Committee

[Kat Hammond](#) (event organisation) GNS Science, Lower Hutt, New Zealand

[Jill Remnant](#) (LINZ coordinator) NZGB, Wellington, New Zealand

## CONTENTS

<b>1.0</b>	<b>INTRODUCTION AND PURPOSE .....</b>	<b>1</b>
1.1	Programme Overview .....	1
<b>2.0</b>	<b>MAP OF WELLINGTON .....</b>	<b>2</b>
<b>3.0</b>	<b>GENERAL INFORMATION .....</b>	<b>4</b>
3.1	Transport .....	4
3.1.1	Travel to and from the Airport.....	4
3.1.2	Parking .....	4
3.2	Wellington Weather .....	4
3.3	Currency .....	4
3.4	Dining out in Wellington.....	5
3.5	Time.....	6
3.6	Electrical Devices .....	6
<b>4.0</b>	<b>SYMPOSIUM.....</b>	<b>7</b>
4.1	Ice Breaker .....	7
4.2	Symposium Format .....	8
4.3	Symposium Venue .....	8
4.3.1	LINZ Entrance .....	8
4.3.2	LINZ Floor Plan .....	9
4.3.3	Internet Access.....	9
4.3.4	Refreshments .....	10
4.4	Partners Programme .....	11
4.5	Symposium Dinner .....	12
<b>5.0</b>	<b>SYMPOSIUM PROGRAMME .....</b>	<b>13</b>
<b>6.0</b>	<b>PARTICIPANTS .....</b>	<b>14</b>

## FIGURES

Figure 2.1	Wellington CBD Map.....	2
Figure 2.2	Guide to Wellington.....	3
Figure 3.1	Wellington café and restaurant hotspots. ....	5
Figure 4.1	Te Wharewaka o Pōneke, view from across the lagoon. ....	7
Figure 4.2	Radio New Zealand House, view from The Terrace.....	8
Figure 4.3	Floor plan of LINZ Level 7, showing lift, reception and meeting room locations. ....	9
Figure 4.4	Te Wharewaka o Pōneke, illuminated in the evening.....	12

## 1.0 INTRODUCTION AND PURPOSE

The undersea feature names shown on sheets and products of GEBCO and Regional International Bathymetric Charts (IBC) projects, and on international (INT) nautical charts are selected by the GEBCO Sub-Committee on Undersea Feature Names (SCUFN).

The role of SCUFN is to maintain and make available undersea feature names information in the form of a digital gazetteer. SCUFN meets once a year to define the nomenclature used for undersea features, review naming guidelines and to consider and decide on names which have been submitted to the Sub-Committee. The Secretariat of SCUFN is at the International Hydrographic Bureau, Monaco, where the gazetteer database is maintained.

The meeting in Wellington is the 25<sup>th</sup> SCUFN meeting and is jointly hosted by the New Zealand Geographic Board Ngā Pou Taunaha o Aotearoa (NZGB, <http://www.linz.govt.nz/placenames>), Land Information New Zealand (LINZ, [www.linz.govt.nz](http://www.linz.govt.nz)) and GNS Science ([www.gns.cri.nz](http://www.gns.cri.nz)) in Wellington, New Zealand. The meeting will be held at the LINZ office in central Wellington. The address of the meeting place is:

### Physical Address

LINZ  
Level 7, Radio New Zealand House  
155 The Terrace  
Wellington  
New Zealand

### Postal Address

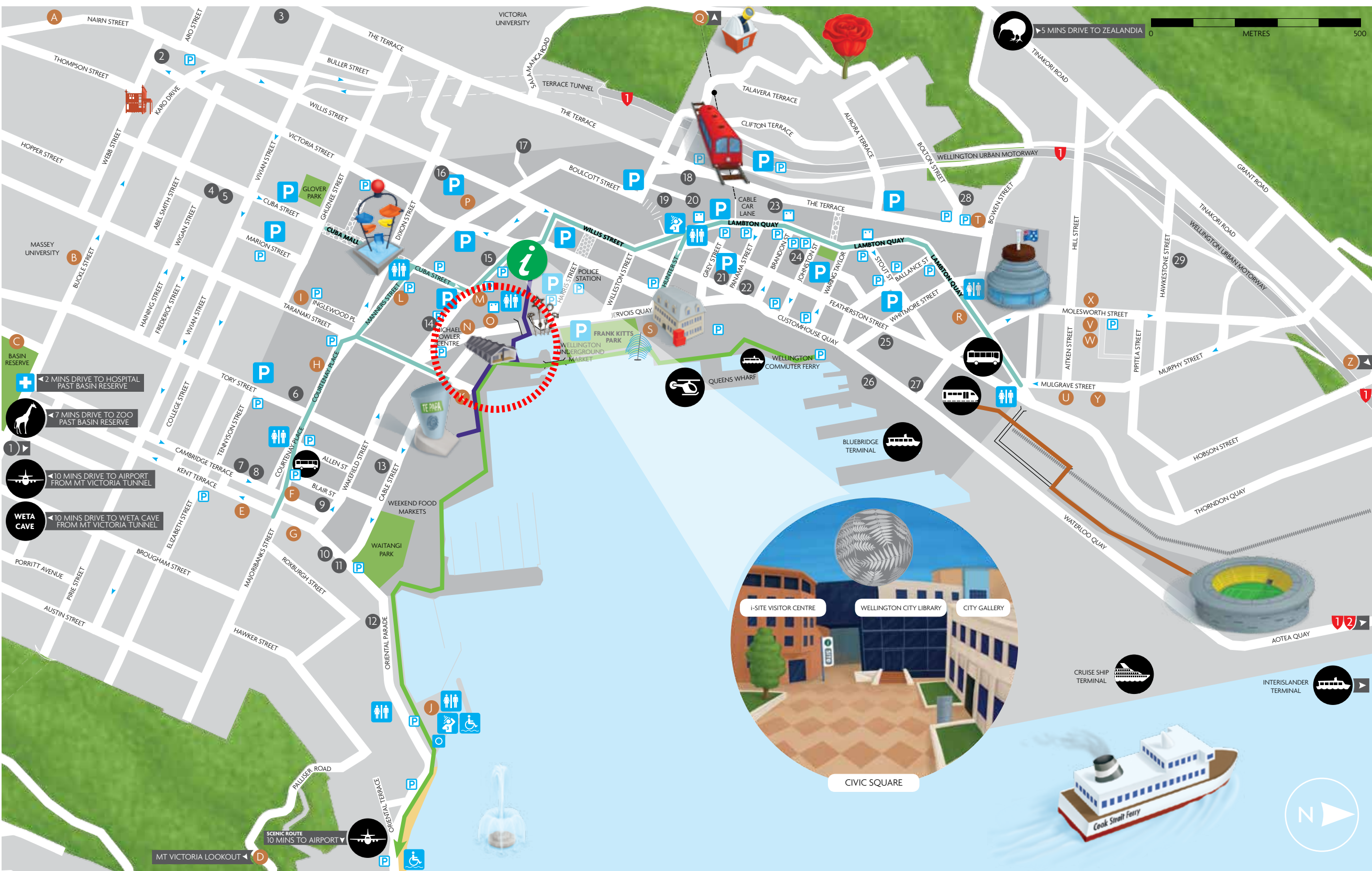
LINZ  
PO Box 5501  
Wellington 6145  
New Zealand

The meeting is from Tuesday the 23<sup>rd</sup> to Saturday the 27<sup>th</sup> of October 2012. It will begin with a traditional Māori welcome in the LINZ office on Tuesday morning at 9.00AM. An Ice Breaker event will be held at the Karaka Café on the Wellington water front on Monday evening and the symposium dinner is at the same location on Thursday evening.

## 1.1 PROGRAMME OVERVIEW

<b>Mon, 22<sup>nd</sup> Oct</b>			<b>Ice Breaker – Karaka Café</b> 6:00PM - 8:00PM
<b>Tues, 23<sup>rd</sup> Oct</b>	<b>Traditional Māori Welcome</b> 9:00AM <b>Symposium – LINZ Office</b> 10:00AM - 5:00PM		
<b>Wed, 24<sup>th</sup> Oct</b>	<b>Symposium – LINZ Office</b> 9:00AM - 5:00PM		
<b>Thurs, 25<sup>th</sup> Oct</b>	<b>Symposium – LINZ Office</b> 9:00AM - 5:00PM		<b>Dinner – Karaka Café</b> 6:30PM - TBC
<b>Fri, 26<sup>th</sup> Oct</b>	<b>Symposium – LINZ Office</b> 9:00AM - 1:00PM	<b>Fieldtrip</b> 1:00PM - 5:00PM	
<b>Sat, 27<sup>th</sup> Oct</b>	<b>Symposium – LINZ Office</b> 9:00AM - 12:00PM		





- KEY ATTRACTIONS**

  - Beehive and Parliament Buildings
  - Museum of New Zealand Te Papa Tongarewa
  - Wellington Cable Car
  - Wellington Botanic Garden
  - Westpac Stadium
  - Museum of Wellington City & Sea
  - Te Wharewaka o Poneke**
  - Carter Observatory
  - Wellington Zoo
  - ZEALANDIA: The Karori Sanctuary Experience
  - Weta Cave
- TRANSPORT**

  - Wellington Airport
  - Railway Station & national bus services
  - Inter-island Ferries
  - Local Bus Terminal
  - Cruise Ship Terminal
  - Queens Wharf Helipad
  - State Highways
  - One way streets
  - Pedestrian streets
- AMENITIES**

  - Wellington Hospital
  - Public Toilets
  - Public Showers
  - Accessible Playground
  - Car Parking
  - Mobility Car Parks
  - Wheelchair Beach Access
  - Lifts
- ROUTES**

  - Civic Square to Te Papa
  - Accessible Walkway & Writers Walk
  - Railway Station to Westpac Stadium
  - Accessible City Route

DRIVING DISTANCES		
Wellington to Makara	25 mins	11 km
Wellington to Porirua	20 mins	21 km
Wellington to Petone	15 mins	13 km
Wellington to Lower Hutt	20 mins	16 km
Wellington to Upper Hutt	35 mins	33 km
Wellington to Greytown	1 hr 10 mins	76 km
Wellington to Martinborough	1 hr 15 mins	81 km
Wellington to Masterton	1 hr 35 mins	100 km

**FOR MORE INFORMATION**

on Wellington visit the i-SITE Visitor Centre, in Civic Square. They can assist you with all your enquiries and bookings for Wellington and around New Zealand. Phone +64 4 802 4860 or visit our website, WellingtonNZ.com

ATTRACTIONS	
A Colonial Cottage Museum	N Michael Fowler Centre
B National War Memorial & Carillon	O Capital E
C New Zealand Cricket Museum	P Department of Conservation
D Mount Victoria Lookout	Q Wellington Cable Car Museum
E Embassy Theatre	R Old Government Buildings
F Downstage Theatre	S TSB Bank Arena
G BATS Theatre	T Reserve Bank Museum
H St James Theatre	U Archives New Zealand
I The Film Archive	V National Library
J Freyberg Pool	W Alexander Turnbull Library
K Circa Theatre	X Wellington Cathedral
L The Opera House	Y Old St Paul's
M Wellington Town Hall & Wellington Convention Centre	Z Katherine Mansfield Birthplace

ACCOMMODATION		
1 Brentwood Hotel (Kilbirnie)	13 Museum Art Hotel	25 Rydges Hotel Wellington
2 Mercure Wellington Willis Street	14 Amora Hotel Wellington	26 Wellington Waterfront Motorhome Park
3 Mercure Wellington	15 West Plaza Hotel	27 Downtown Backpackers
4 CQ Quality Hotel Wellington	16 Abel Tasman Hotel	28 Bolton Hotel
5 CQ Comfort Hotel Wellington	17 Trek Global Backpackers	29 Kingsgate Hotel Wellington
6 Wellywood Backpackers	18 James Cook Hotel	
7 Cambridge Hotel	19 Grand Chancellor	
8 Base Backpackers Wellington	20 Travelodge Wellington	
9 YHA Wellington City	21 CityLife Wellington	
10 Bay Plaza Hotel	22 InterContinental Wellington	
11 Ohtel	23 Ibis Wellington	
12 Copthorne Hotel Oriental Bay	24 Novotel Wellington	
		24 Quest on Johnston



# YOUR GUIDE TO WELLINGTON

## > Coolest little capital in the world

*Wellington*  
WellingtonNZ.com New Zealand

Must do's	Top five photo spots	Dining	Shopping tips	Accessible city
<b>Experience Te Papa</b> New Zealand's national museum on the waterfront. It's free to visit and open every day.	<b>New Zealand's Parliament Buildings</b> Known to locals as 'The Beehive' located on the corner of Lambton Quay and Molesworth Street. You can take free tours inside as well!	<b>Enjoy Wellington's Café Culture</b> Locally roasted coffee is found in dozens of inner-city cafes.	<b>Cuba Street</b> Filled with trendy local fashion and urban design stores.	<p>Wellington has a compact, reasonably flat city centre and a City Council committed to providing services and facilities that are accessible to everyone. Most attractions and public buildings can be easily accessed. Routes marked on this map show streets that have accessible ATMs and plenty of seating.</p> <p><b>Mobility scooters</b> are available from various city locations. They can be booked by people aged 18+ for up to four hours free of charge. Pick up a brochure or phone Wellington City Council on +64 4 499 4444 for more information.</p> <p><b>Accessible transport</b> Bus: Metlink +64 4 801 7000 or <a href="http://www.metlink.org.nz">www.metlink.org.nz</a> Train: +64 4 801 7000 or visit <a href="http://www.tranzmetro.co.nz">www.tranzmetro.co.nz</a> Taxi services: Wellington Combined Taxis +64 4 384 4444 or Hutt and City Taxis +64 4 570 0059 Airport shuttle: Can be booked ahead of time with Wellington Co-operative Shuttles +64 4 387 8787</p> <p><b>Mobility parking permits</b> are issued by CCS Disability Action to people who use a wheelchair or mobility device and/or are unable to walk 200 metres unaided. Permit holders are allowed to park in designated mobility parking spaces for the time indicated on the parking meter. For more information, contact CCS Disability Action on +64 4 568 9000.</p> <p><b>For more information</b> phone Wellington City Council on +64 4 499 4444 and ask to speak to the Accessibility Advisor, email <a href="mailto:info@wcc.govt.nz">info@wcc.govt.nz</a> or visit <a href="http://www.Wellington.govt.nz">www.Wellington.govt.nz</a></p>
<b>Ride the Wellington Cable Car</b> A scenic journey with amazing views of Wellington. Access off Lambton Quay.	<b>The Botanic Garden</b> Take the Cable Car up for expansive views of Wellington.	<b>Ethnic Flavours</b> The Courtenay Place precinct has dozens of tasty options.	<b>Lambton Quay</b> Great high street and department store shopping.	
<b>Visit ZEALANDIA: The Karori Sanctuary Experience</b> A world-first conservation attraction just 10 minutes' drive from Wellington city.	<b>Mount Victoria Lookout</b> For panoramic views of Wellington city and the surrounding bays.	<b>Meals With a View</b> The waterfront is the perfect place for an evening meal and relaxing stroll.	<b>Local Designs</b> Check out Willis Street, Featherston Street and Victoria Street.	
<b>New Zealand's Place for Space!</b> Maori mythology meets Big Bang science at Carter Observatory.	<b>Civic Square</b> Iconic Fern Ball and City to Sea Bridge.	<b>Best Neighbourhood Restaurant of 2010</b> Head to The Ambeli on Majoribanks Street.	<b>Souvenirs and Gifts</b> Te Papa museum and Allen Street have fantastic homeware and NZ souvenirs.	
<b>Meet the Locals</b> Take a half or full-day tour, escorted by passionate Wellingtonians.	<b>Wellington Waterfront</b> Where Wellingtonians come to play.	<b>Local Flavours</b> Pick up fresh produce and fish straight from the boat at the Sunday morning Harbourside Market, next to Te Papa.	<b>Markets</b> City Market Sundays 8.30am - 12.30pm and Frank Kitts Market Saturdays 10am - 4pm. Both located on the waterfront.	

### WELLINGTON MOBILE GUIDE

USE IT TO FIND OUT :

- What's on
- Top restaurants & bars
- Best places to visit & shop
- Accommodation
- Weather & other useful information

HOW DO YOU GET ONTO IT?

Go to [m.WellingtonNZ.com](http://m.WellingtonNZ.com) from your mobile phone

Or text\* WELLINGTON to 315 and get the link sent to you



### WELLY WALKS APPLICATION

Explore some of Wellington's walkways with our free Welly Walks application. It'll help you discover all the best tourist spots, nature reserves and hidden gems in Wellington.

> **DOWNLOAD FROM ITUNES.**



### KIRKCALDIE & STAINS TRAVEL PRICE

Kirkcaldie & Stains offers all international travellers **15% off** the normal price on all merchandise store wide. To receive the Kirkcaldie & Stains travel price customers must show proof (e.g.: tickets) that they are travelling within the next two weeks and must spend a minimum of \$50. This offer is only available to the person who is travelling and named on the travel documents. The Travel Price is unavailable on purchases in Crabtree & Evelyn, Dermalogica, K&S Café, Mecca Cosmetics, Mimco, Rodd & Gunn, Scent Floral Boutique, Te Papa Store and Witchery and not in conjunction with any other offer.



Est. 1863  
**KIRKCALDIE & STAINS Ltd.**  
LAMBTON QUAY • (04) 472 5899  
[www.kirkcaldies.co.nz](http://www.kirkcaldies.co.nz)

\* Standard text charges apply. While the mobile guide is provided free, charges from your mobile provider for data usage may apply.

## 3.0 GENERAL INFORMATION

### 3.1 TRANSPORT

#### 3.1.1 Travel to and from the Airport

Wellington Airport offers many modes of transportation:

	Company	Approx. Cost to Wellington CBD
<b>Bus</b>	Airport Flyer	\$8 per person
<b>Shuttle</b>	Super Shuttle	\$20 for 1 person, and then \$5 per extra
<b>Taxi</b>	Wellington Combined Taxis, Green Cabs, Corporate Cabs	\$35 per trip
<b>Rental</b>	Avis, Budget, Europcar, Hertz, Thrifty	From \$65 a day

Airport Transport Information: <http://www.wellingtonairport.co.nz/parking-and-transport/>

#### 3.1.2 Parking

There are various parking buildings located throughout the Wellington Central Business District. The hotel you book accommodation with will either have their own parking building or will be able to advise you on parking locations and costs. Average fees range from \$6 per half hour in buildings to \$35 for all day parking.

Council Parking: <http://www.wellington.govt.nz/services/parking/index.html>

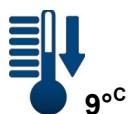
Wilson Parking Buildings: <https://www.wilsonparking.co.nz/go/regions/wellington-cbd>

## 3.2 WELLINGTON WEATHER

Wellington is situated at 41° south and has a temperate maritime climate, but can be very changeable. Funnelling of wind through the nearby Cook Strait is the cause of the city's legendary wind. Weather is rarely still or the same from one hour to the next. October is the middle of spring and days will be long (sunrise 6:20AM – sunset 7:50PM). Daytime maximum temperatures can range from 9°C (48F) to 16°C (61F). The wind chill can make these temperatures feel much cooler. Be prepared for both rain and some bright and beautiful days. A warm windproof jacket and a good sun hat are recommended.

3 to 5 day forecast: <http://www.metservice.com/towns-cities/wellington>

Av. Daily  
Minimum Temp.  
(OC)



9°C

Av. Daily  
Maximum Temp.  
(OC)



15°C

Av. hours Sunshine  
(per day)



6.2

Av. No. Days with  
at least 0.25 mm  
Rainfall



14

Average  
Afternoon  
Humidity



75

## 3.3 CURRENCY

New Zealand currency is the New Zealand Dollar (NZD). Costs mentioned within the programme are in NZ dollars.



### 3.4 DINING OUT IN WELLINGTON

Wellington has the highest concentration of cafés and restaurants of any city in New Zealand. The downtown area can cater for just about any taste. There are a number of restaurants on and around Courtney Place. There are also many restaurants on Cuba Street. Expect to pay around \$20-\$40 for a main dish (there is no gratuity).

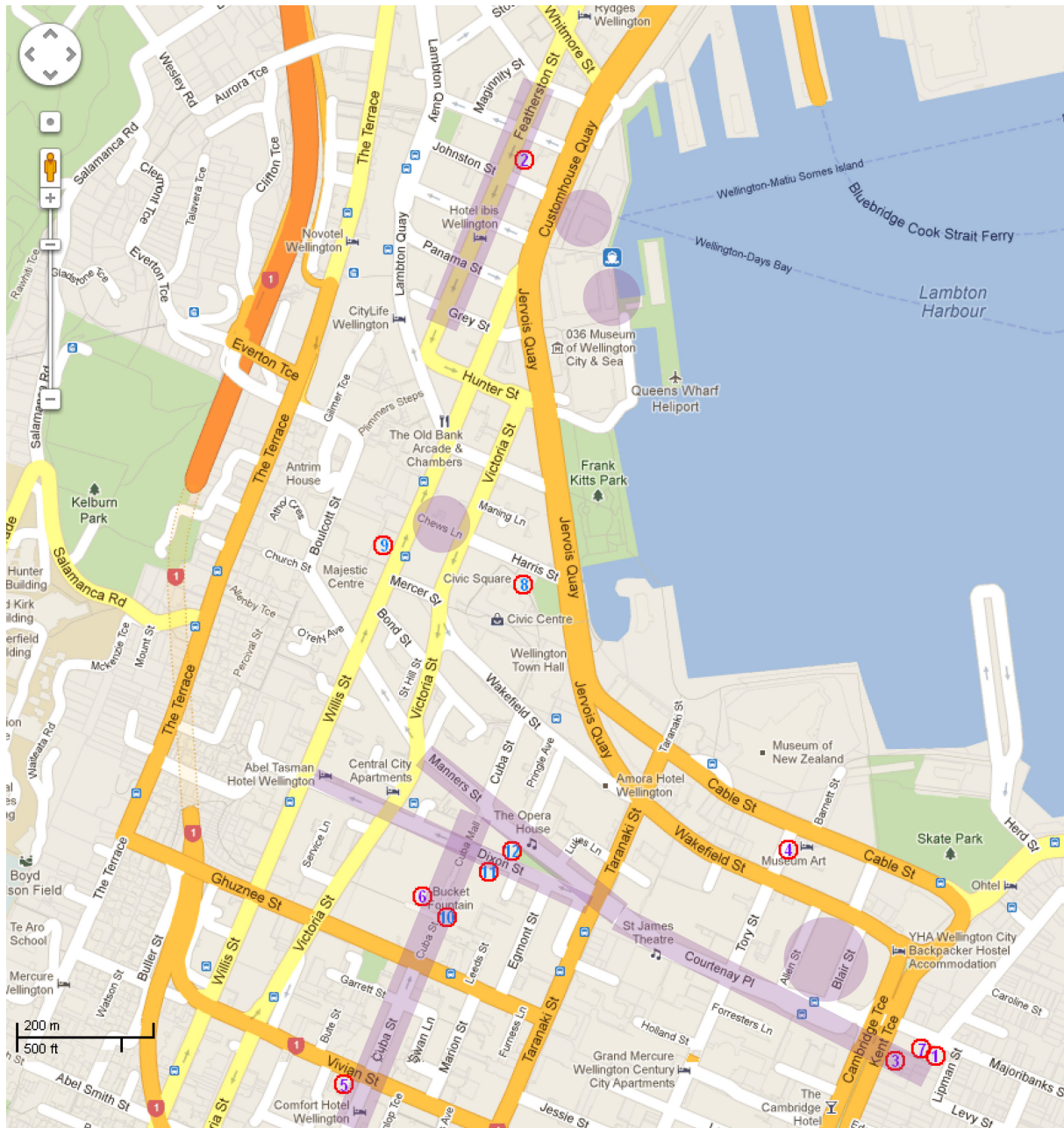


Figure 3.1 Wellington café and restaurant hotspots.

#### Wellington's Top Restaurants:

- 1 Ambeli
- 2 Arbitrageur
- 3 Capitol
- 4 Hippopotamus
- 5 Logan Brown
- 6 Matterhorn
- 7 Ortega Fish Shack & Bar

#### Wellington's Top Cafés:

- 8 Nikau
- 9 Ti Kouka Café
- 10 Plum Café
- 11 Simply Paris
- 12 Memphis Belle Coffee House

Purple highlighting shows concentrated restaurant/café zones.

### **3.5      TIME**

In October the time zone is New Zealand Daylight Time (NZDT), which is:

GMT/UTC + 13 hours

### **3.6      ELECTRICAL DEVICES**

New Zealand runs a 230 V 50 Hz electricity supply. You will need an Australasian 3-pin (pins in Y-shape) adapter for any electrical devices.

## 4.0 SYMPOSIUM

### 4.1 ICE BREAKER

On Monday the 22<sup>nd</sup> of October from 6:00PM until 8:00PM a casual Ice Breaker event will be held at Karaka Café, Te Wharewaka o Poneke, Taranaki Street Wharf on the Wellington Waterfront (Page 2). Canapés and refreshments will be served.

Here you will be able to catch up with fellow participants and partners before commencement of the symposium and collect your name badge, printed copy of the programme and any additional information for the week.

#### Canapé Selection

Wafer thin prosciutto on mini toast with goat cheese and fig marmalade

Peppered lamb fillet on green tomato chutney and balsamic glaze

Seared scallop wrapped in bacon (gf)

Little margherita pizza with tomato, onion, oregano, cheddar and mozzarella (v)

Mini caramel and pecan chocolate cups (gf) (v)

Cocktail pavlova topped with whipped cream and seasonal fruit garnish (v)



Figure 4.1 Te Wharewaka o Poneke, view from across the lagoon.



## 4.2 SYMPOSIUM FORMAT

The symposium is at the same venue each day and will begin at 9.00AM and finish at around 5.00PM. Lunch is provided at the venue, although if participants wish, they can visit one of the numerous cafes close to the venue for an alternative lunch. There are also tea and coffee breaks during the morning and afternoon sessions. On Friday after lunch, half day outings are planned where participants can visit one of the following:

1. LINZ Hydro ([www.linz.govt.nz](http://www.linz.govt.nz)). LINZ is the New Zealand government department responsible for charts and nautical information, place names, land titles, geodetic and cadastral survey systems and other related services.
2. NIWA ([www.niwa.co.nz](http://www.niwa.co.nz)). NIWA is a Crown Research Institute that focusses on atmospheric, ocean and freshwater science. NIWA operates the *RV Tanagroa*.
3. GNS Science ([www.gns.cri.nz](http://www.gns.cri.nz)). GNS Science is a Crown Research Institute that focusses on geoscience and isotope research.

Minibus taxis will take participants from the meeting venue to the NIWA or GNS offices directly after lunch. The minibus taxi will deliver participants back to the symposium venue at about 5.00PM. LINZ Hydro is located in the same building as the symposium venue.

## 4.3 SYMPOSIUM VENUE

The symposium will be hosted by Land Information New Zealand (LINZ) in Radio New Zealand House on level 7. We will be located in the Meeting Rooms Huia and Karaka (see Figure 4.3).

At the level 7 reception all visitors are required to sign in at the beginning of each day. Please wear your name badges at all times so that our hosts will know you are with the SCUFN symposium.

### 4.3.1 LINZ Entrance

Access to LINZ is via Radio New Zealand House, 155 The Terrace, Wellington.

[Google Map Physical Address](#)



Figure 4.2 Radio New Zealand House, view from The Terrace.



### 4.3.2 LINZ Floor Plan

On entering the building take the lift to Level 7, there you will see a reception area, advise the receptionist you are with the SCUFN symposium, after signing in you'll be guided to the meeting rooms.

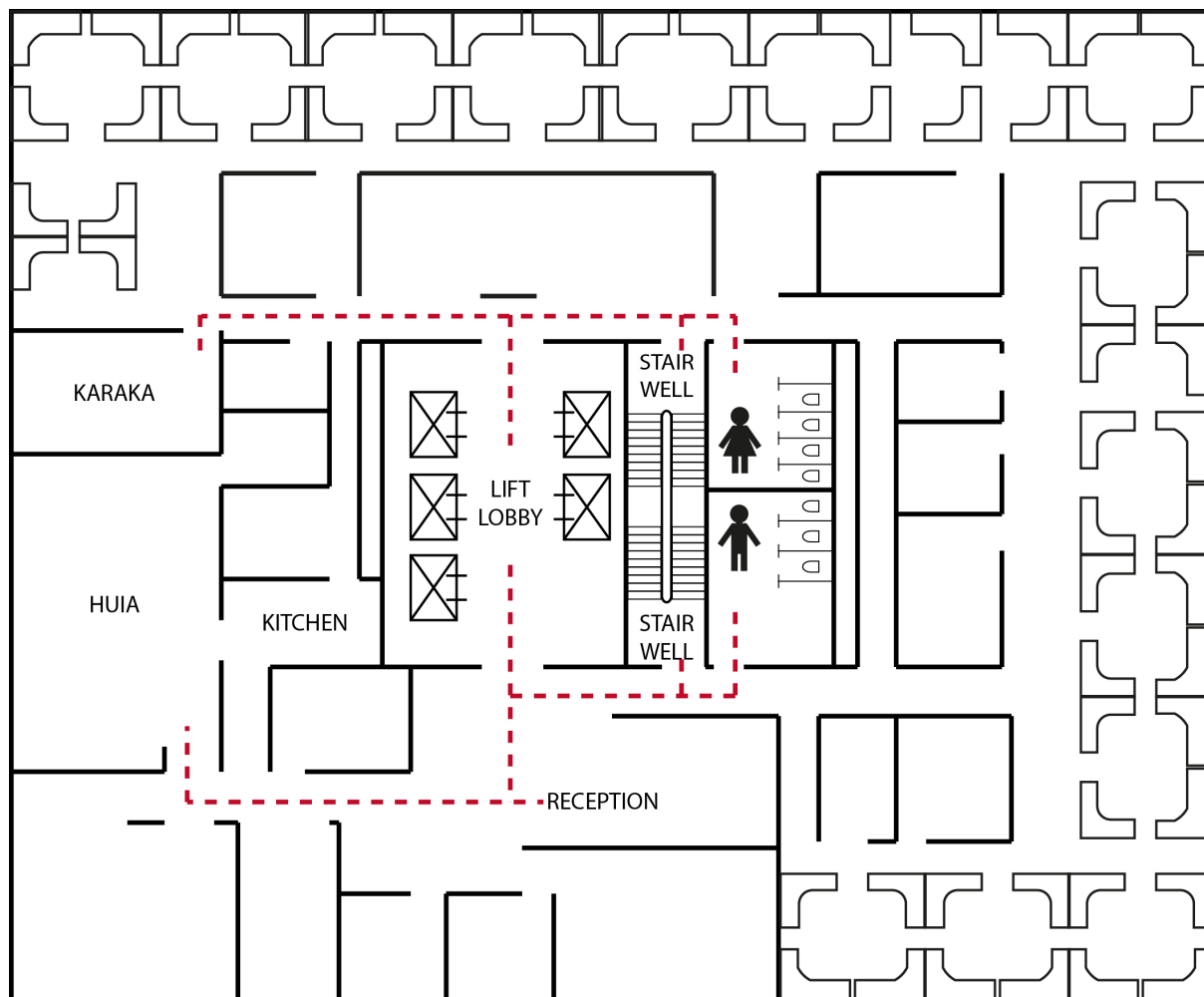


Figure 4.3 Floor plan of LINZ Level 7, showing lift, reception and meeting room locations.

### 4.3.3 Internet Access

During our symposium at LINZ free wireless internet access will be available. Further details on accessing this network will be provided at the venue on Tuesday the 23<sup>rd</sup> of October.

For internet access during your own time please see your hotel reception or check out the city's services:

- Wellington's CBD offers a free Wi-Fi service. If you have a Wi-Fi smart device it should be able to pick up available networks, just select 'cbdfree' and you will be able to connect. For more information see: <http://cbdfree.co.nz/>
- In addition a comprehensive wireless internet network is available for use through [www.cafenet.co.nz](http://www.cafenet.co.nz) from \$10 for 24 hours access.

#### 4.3.4 Refreshments

Morning and afternoon refreshments along with lunches are provided. These will be served onsite at LINZ. The caterer has been advised of any special dietary requirements. If you requested a special diet in advance this will be available for you.

##### *Morning and Afternoon Tea*

###### **Refreshments**

Coffee, tea, juice and water

Selection of biscuits

##### *Lunch*

To be served each day with orange and apple juice and a fresh seasonal sliced fruit platter.

###### **Day 1**

Roast beetroot, orange segments, caramelised walnuts, feta, with a raspberry vinaigrette (V)

Ficelles of honey glazed Ham, dijon mustard and cheddar

Chicken, asparagus and brie quiche

Rice paper rolls with soy and ginger julienne of vegetables (V/GF)

White chocolate caramel crumble

###### **Day 2**

Marinated chicken with crisp bacon lardons mixed seasonal salad, pear and pecan dressing

Selection of club sandwiches Including Vegetarian

Vegetarian frittata of peppers, mushroom, rocket and roasted red onion (V/GF)

Yorkshire puddings filled with mint encrusted lamb and grilled cherry tomato

Orange lemon & lime slice

###### **Day 3**

Pasta salad with grilled Portobello mushrooms, roast capsicum, basil leaf, balsamic & aged parmesan (V)

Salmon Gravlax Mescaline salad Dill cream cheese bagel

Chorizo, bacon and red pepper frittata (GF)

Char grilled vegetable and halloumi skewer with thyme & lemon baste (V/GF)

Chef's special of the day

###### **Day 4**

Japanese soba noodle salad with spiced beef, coriander, baby bok choy and Vietnamese dressing

Grilled eggplant, courgette, tomato, on rosemary focaccia with cream cheese and black olive tapenade (V)

Red onion spinach and blue cheese pie (V)

Toasted macadamia chicken strips with roasted garlic aioli (GF)

Cakes & sponges

## 4.4 PARTNERS PROGRAMME

The partners programme will be hosted by Vaughan Stagpoole's wife, Leoni Hawkins.

Any partners interested in participating should meet at the LINZ office on Tuesday at 9:00AM, Leoni will be there to greet you and discuss the plans for the week.

Possible attraction venues for the partners programme include:

Opening hours	Attraction	Approx. Cost
	Wellington Zoo: <a href="http://www.wellingtonzoo.com/">http://www.wellingtonzoo.com/</a>	\$20 per adult
	Museum of New Zealand, Te Papa Tongarewa: <a href="http://www.tepapa.govt.nz">http://www.tepapa.govt.nz</a>	Free entry, though charges apply to some short-term exhibitions and activities.
	Zealandia, The Karori Sanctuary Experience: <a href="http://www.visitzealandia.com">http://www.visitzealandia.com</a>	\$30 per adult
	The Weta Cave: <a href="http://www.wetanz.com/cave/">http://www.wetanz.com/cave/</a>	Free entry
	Southward Car Museum: <a href="http://www.southwardcarmuseum.co.nz/">http://www.southwardcarmuseum.co.nz/</a>	\$12 per adult
	Lindale: <a href="http://www.lindale.co.nz/">http://www.lindale.co.nz/</a>	Free entry
	Lindale Farm: <a href="http://www.lindalefarmyard.com/">http://www.lindalefarmyard.com/</a>	\$8 per adult, \$2 per bag of feed
	Nga Manu Nature Reserve: <a href="http://www.ngamanu.co.nz/">http://www.ngamanu.co.nz/</a>	\$15 per adult, \$2 per bag of feed
	Staglands Wildlife Reserve: <a href="http://www.staglands.co.nz/">http://www.staglands.co.nz/</a>	\$20 per adult, \$2 per bag of feed
	Carter Observatory: <a href="http://www.carterobservatory.org/">http://www.carterobservatory.org/</a>	\$20 per adult
	The Dowse Art Museum: <a href="http://www.dowse.org.nz/">http://www.dowse.org.nz/</a>	Free entry
Wed - Sun	Stonehenge Aotearoa: <a href="http://www.astronomynz.org.nz/stonehenge/">http://www.astronomynz.org.nz/stonehenge/</a>	\$16 per adult
Fri	Gladstone Vineyard: <a href="http://www.gladstonevineyard.co.nz/">http://www.gladstonevineyard.co.nz/</a>	Free entry
	Wairarapa Wine Trail: <a href="http://www.wairarapanz.com/files/WaiWineTrail2011.pdf">http://www.wairarapanz.com/files/WaiWineTrail2011.pdf</a>	Free entry

Participants should bring:

- Money for site entry and lunch
- A bottle of water
- Any personal medications, including those for allergic reactions (e.g. insect stings, pollen, etc.)
- Sturdy walking shoes
- A windproof coat and warm clothing
- Sunhat and sunscreen

## 4.5 SYMPOSIUM DINNER

The symposium dinner will be held on Thursday the 25<sup>th</sup> of October from 6:30PM at Karaka Café, Te Wharewaka o Poneke, Taranaki Street Wharf on the Wellington Waterfront (Map on Page 2 showing location of restaurant).

Participants and partners are welcome. A three course New Zealand style meal will be served and some refreshments provided.

### Canapé Starter Selection

Marinated haloumi with peppadew & pimento stuffed green olives (v)

Marinated zesty mussels on citrus kumara salad

Mini beef mignons drizzled with a mousseline sauce

### Main

Lamb Rump marinated in feijoa juice accompanied by kumara cake and manuka honey-roasted root vegetables;  
or

Grilled salmon steak dusted with lemon-kelp pepper served with crushed minted peas accompanied by champagne risotto croquettes and parsley cream sauce

### Dessert

Lemon citron tart with berry compote topped by a butterfly tuile and accompanied by a Cream-Chantilly filled brandy snap



Figure 4.4 Te Wharewaka o Poneke, illuminated in the evening. View from across the lagoon.



## 5.0 SYMPOSIUM PROGRAMME

Start	Activity	Location
<b>DAY 1: TUESDAY 23<sup>rd</sup> OCTOBER</b>		
09:00	Whakatau – Traditional Māori Welcome	LINZ
10:30	Beginning of Day 1 proceedings	Huia
10:30	Meeting	
12:30	LUNCH	
13.30	Meeting	
17:00	End of Day 1 proceedings	

Start	Activity	Location
<b>DAY 2: WEDNESDAY 24<sup>th</sup> OCTOBER</b>		
09:00	Beginning of Day 2 proceedings	LINZ
09:00	Meeting	Huia
12:30	LUNCH	
13.30	Meeting	
17:00	End of Day 2 proceedings	

Start	Activity	Location
<b>DAY 3: THURSDAY 25<sup>th</sup> OCTOBER</b>		
09:00	Beginning of Day 3 proceedings	LINZ
09.00	Meeting	Huia
12:30	LUNCH	
13.30	Meeting	
17:00	End of Day 3 proceedings	
18:30	DINNER at Te Wharewaka o Poneke	

Start	Activity	Location
<b>DAY 4: FRIDAY 26<sup>th</sup> OCTOBER</b>		
09:00	Beginning of Day 4 proceedings	LINZ
09.00	Meeting	Huia
12:30	LUNCH	
13:00	SITE TOUR – GNS Science, LINZ or NIWA	
17:00	End of Day 4 proceedings	

Start	Activity	Location
<b>DAY 5: SATURDAY 27<sup>th</sup> OCTOBER</b>		
09:00	Beginning of Day 5 proceedings	LINZ
09.00	Meeting	Huia
13:00	End of Day 5 proceedings	

## 6.0 PARTICIPANTS

Name	E-mail	Affiliation
<b>Members</b>		
Dr Hans Werner SCHENKE (Chair)	<a href="mailto:hans-werner.schenke@awi.de">hans-werner.schenke@awi.de</a>	Alfred-Wegener-Institut für Polar-und Meeresforschung (Germany)
Ms Lisa A. TAYLOR (Vice Chair)	<a href="mailto:Lisa.A.Taylor@noaa.gov">Lisa.A.Taylor@noaa.gov</a>	National Geophysical Data Center (USA)
Dr Yasuhiko OHARA	<a href="mailto:ohara@jodc.go.jp">ohara@jodc.go.jp</a>	Japan Hydrographic and Oceanographic Department
LtCdr. Lic. Walter REYNOSO-PERALTA	<a href="mailto:wreynoso@hidro.gov.ar">wreynoso@hidro.gov.ar</a>	Servicio de Hidrografia Naval (Argentina)
Prof LIN Shaohua	<a href="mailto:shlin@mail.nmdis.gov.cn">shlin@mail.nmdis.gov.cn</a>	National Marine Data & Information Service (China)
Ms Ana Angelica ALBERONI	<a href="mailto:ana.angelica@chm.mar.mil.br">ana.angelica@chm.mar.mil.br</a>	Directorate of Hydrography and Navigation (Brazil)
Dr Hyun-Chul HAN	<a href="mailto:han@kigam.re.kr">han@kigam.re.kr</a>	Korea Institute of Geoscience & Mineral Resources
Dr. Ksenia DOBROLYUBOVA	<a href="mailto:marine@ginras.ru">marine@ginras.ru</a>	Geological Institute of the Russian Academy of Sciences
Dr Vaughan STAGPOOLE	<a href="mailto:v.stagpoole@gns.cri.nz">v.stagpoole@gns.cri.nz</a>	Institute of Geological & Nuclear Sciences (New Zealand)
Mr Felipe BARRIOS BURNETT	<a href="mailto:fbarrrios@shoa.cl">fbarrrios@shoa.cl</a>	Hydrographic and Oceanographic Service of the Chilean Navy
Name	E-mail	Affiliation
<b>Secretary</b>		
Ing. en Chef Michel HUET	<a href="mailto:michel.huet@iho.int">michel.huet@iho.int</a>	International Hydrographic Bureau
Name	E-mail	Affiliation
<b>Observers</b>		
Dr Robin FALCONER	<a href="mailto:robinfalconerassociates@paradise.net.nz">robinfalconerassociates@paradise.net.nz</a>	GEBCO (New Zealand)
Mr Jimmy NERANTZIS	<a href="mailto:Jimmy.Nerantzis@nga.mil">Jimmy.Nerantzis@nga.mil</a>	National Geospatial-intelligence Agency (USA)
Dr Yellepeddy Venkata RAMAKRISHNA	<a href="mailto:ia-inho-navy@nic.in">ia-inho-navy@nic.in</a>	National Hydrographic Office (India)
Dr Kunio YASHIMA	<a href="mailto:yashima@jha.jp">yashima@jha.jp</a>	Japan Hydrographic Association (Japan)
Mr LI Sihai	<a href="mailto:lsh@mail.nmdis.gov.cn">lsh@mail.nmdis.gov.cn</a>	National Marine Data & Information Service (China)
Dr GAO Jinyao	<a href="mailto:jygaoster@gmail.com">jygaoster@gmail.com</a>	Second Institute of Oceanography (China)
Ms XU Heyun	<a href="mailto:heyunxu@hotmail.com">heyunxu@hotmail.com</a>	State Oceanic Administration, People's Republic of China (China)
Mr XING Zhe	<a href="mailto:xz_nmdis@163.com">xz_nmdis@163.com</a>	National Marine Data & Information Service (China)
Mr HU Wei	<a href="mailto:denhaag.nederland@gmail.com">denhaag.nederland@gmail.com</a>	National Committee for Standardization of Geographical Names (China)
Mr Vladimir BOGINSKIY	<a href="mailto:vlboginskij@yandex.ru">vlboginskij@yandex.ru</a>	State Central Scientific and Research Institute of Geodesy, Air Survey and Cartography (Russia)
Ms Marina MOROZOVA	<a href="mailto:inter-dep@rosreestr.ru">inter-dep@rosreestr.ru</a>	Federal Agency for State Registration, Cadastre and Cartography (Russia)
Mr Adam GREENLAND	<a href="mailto:agreenland@linz.govt.nz">agreenland@linz.govt.nz</a>	LINZ (New Zealand)
Mr Kevin MACKAY	<a href="mailto:Kevin.Mackay@niwa.co.nz">Kevin.Mackay@niwa.co.nz</a>	NIWA (New Zealand)







