

INTERNATIONAL HYDROGRAPHIC ORGANIZATION	INTERGOVERNMENTAL OCEANOGRAPHIC COMMISSION (of UNESCO)
--	---

UNDERSEA FEATURE NAME PROPOSAL

Name Proposed:	Zhuying Seamount	Ocean or Sea:	Central East Pacific
-----------------------	------------------	----------------------	----------------------

Geometry that best defines the feature (Yes/No):						
Point	Line	Polygon	Multiple Points	Multiple Lines	Multiple Polygons	Combination of geometries
		Yes				

* Geometry should be clearly distinguished when providing the coordinates below.

	Lat. (e.g. 63°32.6'N)	Long. (e.g. 046°21.3'W)
Coordinates:	08°41.0'N (summit)	144°12.6'W (summit)
	08°44.9'N (bottom)	144°15.4'W (bottom)
	08°43.3'N	144°16.7'W
	08°40.3'N	144°17.0'W
	08°36.9'N	144°14.2'W
	08°37.0'N	144°10.1'W
	08°40.1'N	144°09.2'W
	08°41.8'N	144°09.6'W
	08°44.0'N	144°12.0'W
	08°44.9'N	144°15.4'W

Feature Description:	Maximum Depth:	5350 m	Steepness :	
	Minimum Depth :	3882 m	Shape :	
	Total Relief :	1468 m	Dimension/Size :	16.4 km × 14.3 km

Associated Features:	This seamount is located in abyssal plain and its shape is like a cone. The height difference from its top to its bottom is about 1468 m with its base area extending to 230 km ² .
-----------------------------	--

Chart/Map References:	Shown Named on Map/Chart:	
	Shown Unnamed on Map/Chart:	GEBCO 5.07
	Within Area of Map/Chart:	

Reason for Choice of Name (if a person, state how associated with the feature to be named) :	Zhu Ying (220 A.D. to 280 A.D.) was a traveler from the state of Wu during the three kingdoms period in Chinese history. He had ever led the fleet to visit countries around the South China Sea and was the first traveler sailing to Southeast Asia throughout Chinese history. Zhu Ying had written two books recording his sailing and visiting to those countries. This seamount is named Zhuying to commemorate his contribution in maritime history.
--	---

Discovery Facts:	Discovery Date:	Aug. 1995
	Discoverer (Individual, Ship):	R/V Dayang Yihao

Supporting	Date of Survey:	Aug. 1995
-------------------	-----------------	-----------

Survey Data, including Track Controls:	Survey Ship:	R/V Dayang Yihao
	Sounding Equipment:	Multi-beam sounding system (SeaBeam 2112.360)
	Type of Navigation:	Sercel NR51 DGPS
	Estimated Horizontal Accuracy (nm):	
	Survey Track Spacing:	5 nm
	Supporting material can be submitted as Annex in analog or digital form. See Attachments	

Remarks:	Name(s):	Zhanhai ZHANG
	Data:	22 Aug. 2013
Proposer(s):	E-mail:	heyunxu@hotmail.com
	Organization and address:	Sub Committee on Undersea Feature Names of China Committee on Geographical Names No.1 Fuxingmenwai Ave. Beijing

Attachments:

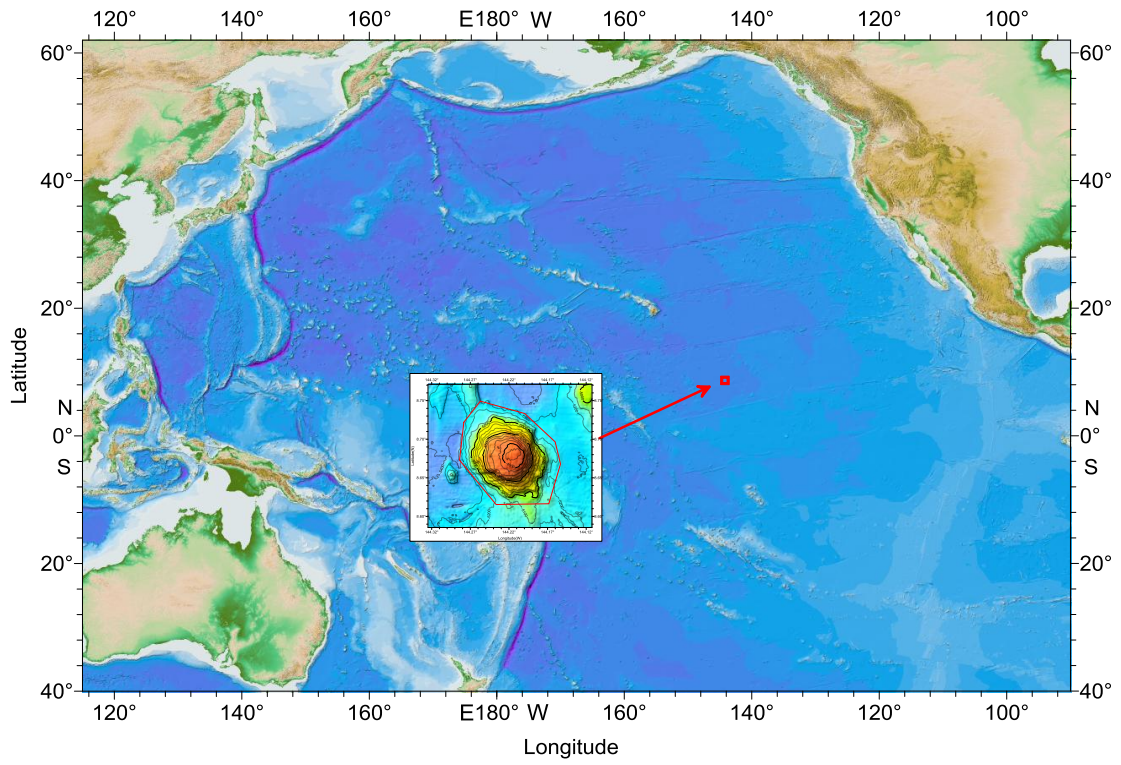


Fig.1 Index map showing the location of the Zhuying Seamount

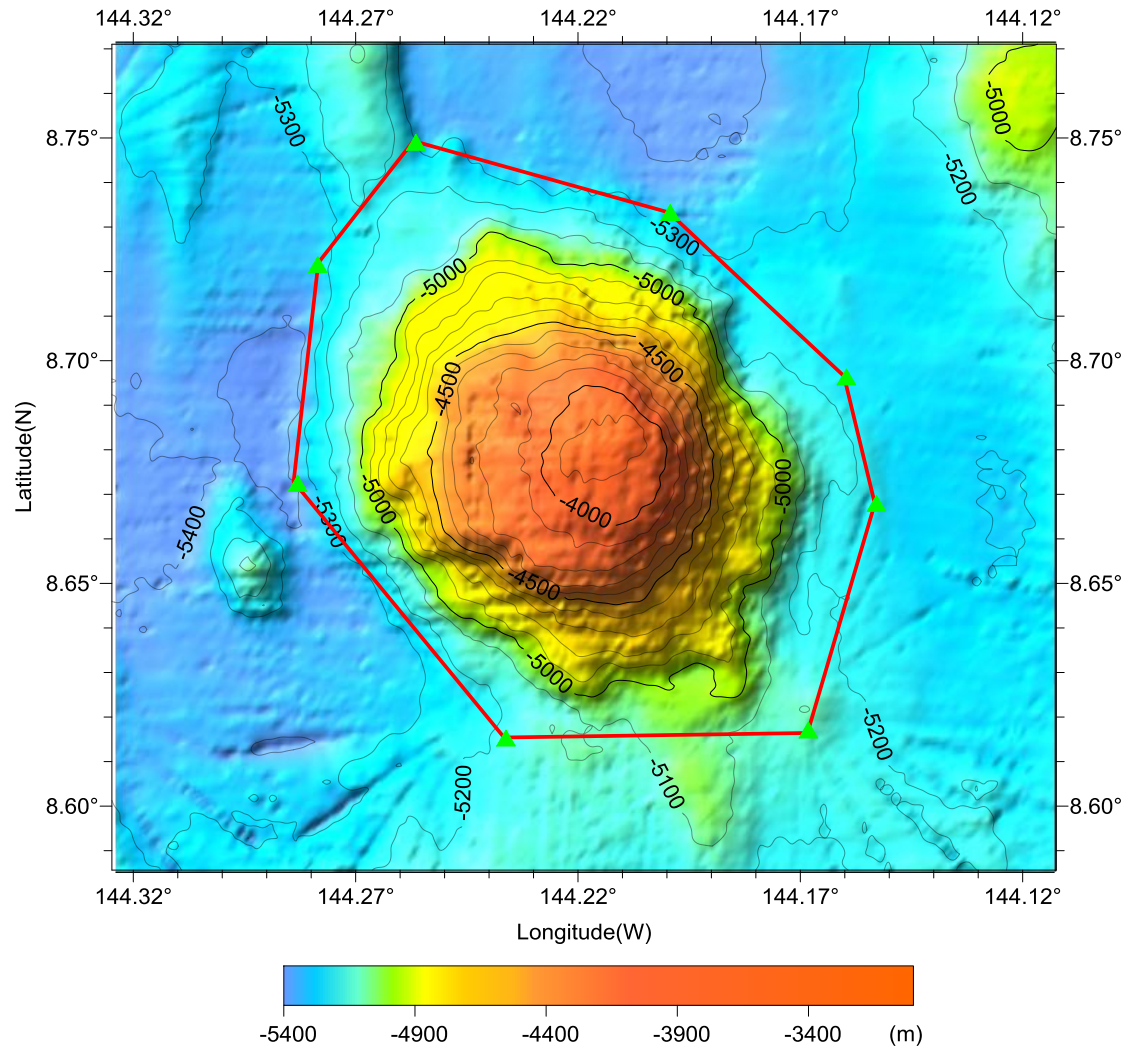


Fig.2 Bathymetric map of the Zhuying Seamount (Contours are in 100 m).

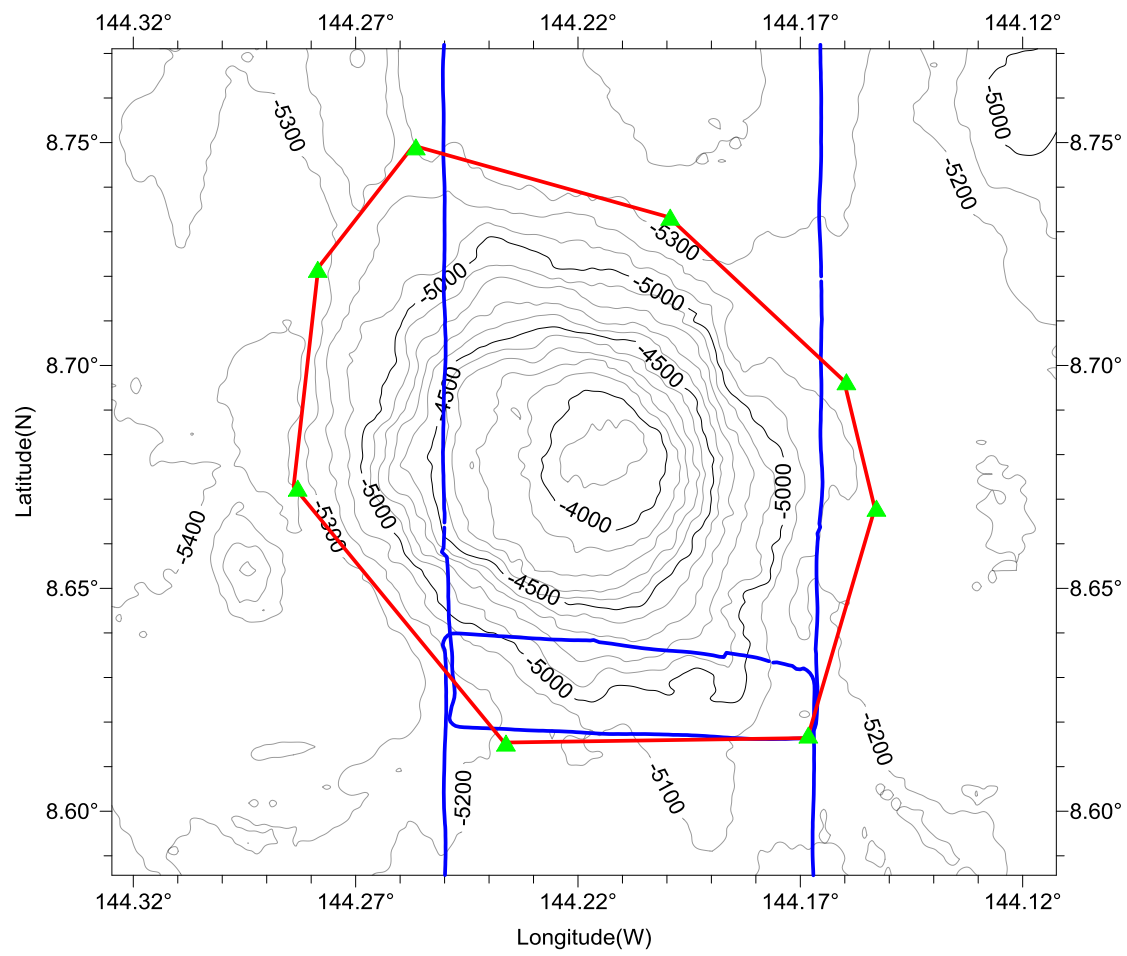


Fig.3 Bathymetric map of the Zhuying Seamount, showing track lines.
(Contours are in 100 m)

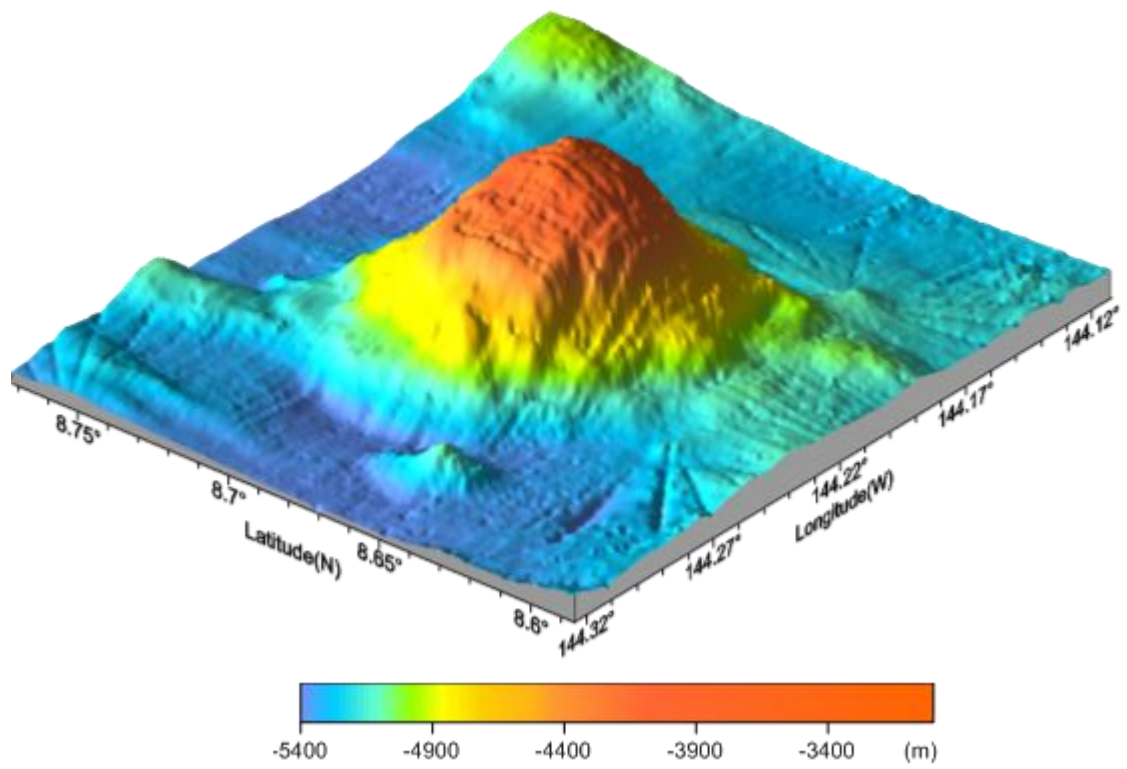


Fig.4 3-D bathymetric map of the Zhuying Seamount

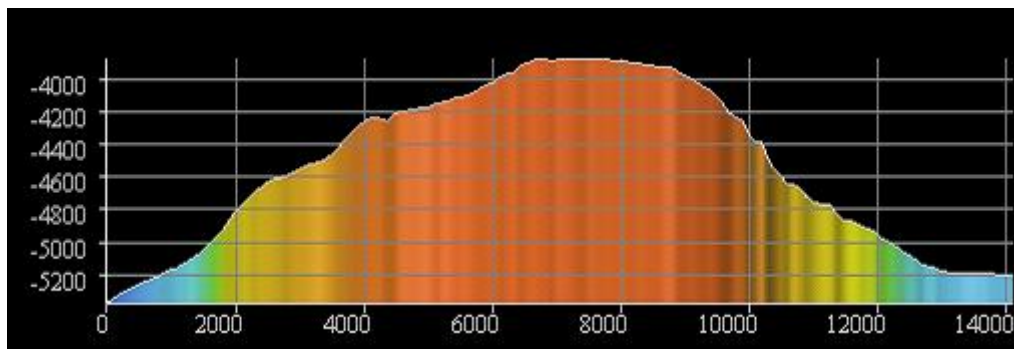
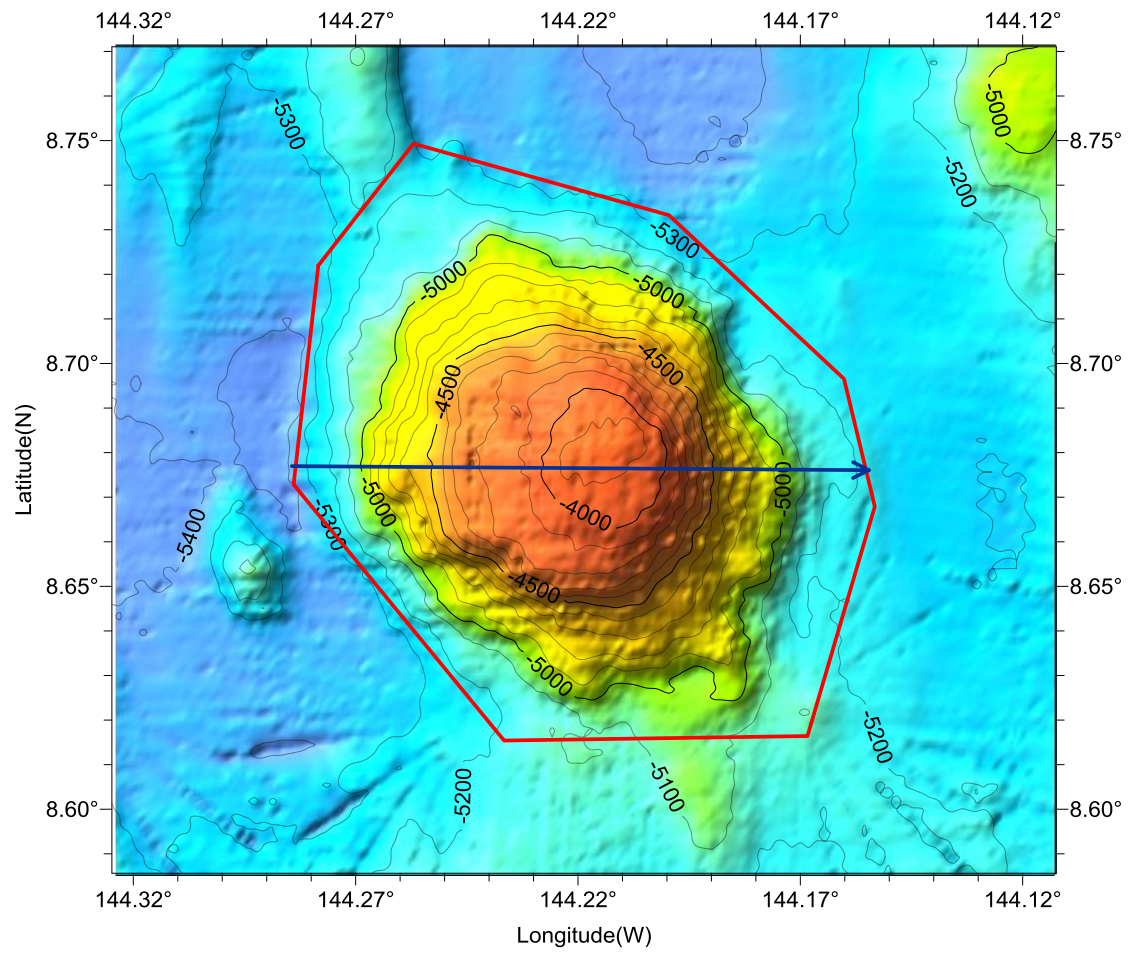


Fig.5 Profile of the Zhuying Seamount