

<b>INTERNATIONAL HYDROGRAPHIC ORGANIZATION</b>	<b>INTERGOVERNMENTAL OCEANOGRAPHIC COMMISSION (of UNESCO)</b>
--	---

UNDERSEA FEATURE NAME PROPOSAL

<b>Name Proposed:</b>	Dacheng Guyot	<b>Ocean or Sea:</b>	Pacific Ocean
-----------------------	---------------	----------------------	---------------

Geometry that best defines the feature (Yes/No):						
Point	Line	Polygon	Multiple Points	Multiple Lines	Multiple Polygons	Combination of geometries
		Yes				

\* Geometry should be clearly distinguished when providing the coordinates below.

	Lat. (e.g. 63°32.6'N)	Long. (e.g. 046°21.3'W)
<b>Coordinates:</b>	21°41.8'N (summit)	160°40.3'E (summit)
	21°52.4'N (bottom)	160°41.5'E (bottom)
	21°52.2'N	160°46.7'E
	21°51.5'N	160°51.3'E
	21°47.7'N	160°52.8'E
	21°43.0'N	160°53.1'E
	21°37.9'N	160°51.5'E
	21°33.1'N	160°49.1'E
	21°28.4'N	160°44.9'E
	21°24.7'N	160°40.3'E
	21°25.2'N	160°34.5'E
	21°28.8'N	160°27.3'E
	21°33.1'N	160°22.0'E
	21°39.6'N	160°18.9'E
	21°43.0'N	160°19.2'E
	21°46.7'N	160°22.2'E
21°50.9'N	160°31.4'E	
21°52.0'N	160°36.6'E	

<b>Feature Description:</b>	Maximum Depth:	4600 m	Steepness :	
	Minimum Depth :	1330 m	Shape :	
	Total Relief :	3270 m	Dimension/Size :	57.3 km × 39.2km

<b>Associated Features:</b>	This seamount belongs to Marcus-Wake Ridge, Northeast to Lamont Seamount, and is a flat-top seamount.
-----------------------------	---

<b>Chart/Map References:</b>	Shown Named on Map/Chart:	
	Shown Unnamed on Map/Chart:	GEBCO 5.06
	Within Area of Map/Chart:	

<b>Reason for Choice of Name</b> (if a person, state how associated with the feature to be named) :	Dacheng comes from <i>SHIJING-XIAOYA</i> ( <i>SHIJING</i> is a collection of ancient Chinese poems from 11 B.C. to 6 B.C.). This poem is written to eulogize King Zhou Xuan for his valiancy, resolution and strength. This seamount is named Dacheng to praise the China ocean expedition team for their spirit to overcome difficulties and courage to explore the sea.
--	---

<b>Discovery Facts:</b>	Discovery Date:	Jul. 2001
	Discoverer (Individual, Ship):	R/V Dayang Yihao

<b>Supporting Survey Data, including Track Controls:</b>	Date of Survey:	Jul. 2001
	Survey Ship:	R/V Dayang Yihao
	Sounding Equipment:	Multi-beam sounding system (SeaBeam2112.360)
	Type of Navigation:	Oministar DGPS
	Estimated Horizontal Accuracy (nm):	<=0.0054nm
	Survey Track Spacing:	6 nm
	Supporting material can be submitted as Annex in analog or digital form. See Attachments	

<b>Proposer(s):</b>	Name(s):	Zhanhai ZHANG
	Date:	22 Aug. 2013
	E-mail:	heyunxu@sina.com
	Organization and address:	Sub Committee on Undersea Feature Names of China Committee on Geographical Names No.1 Fuxingmenwai Ave. Beijing

<b>Remarks:</b>	
-----------------	--

Attachment:

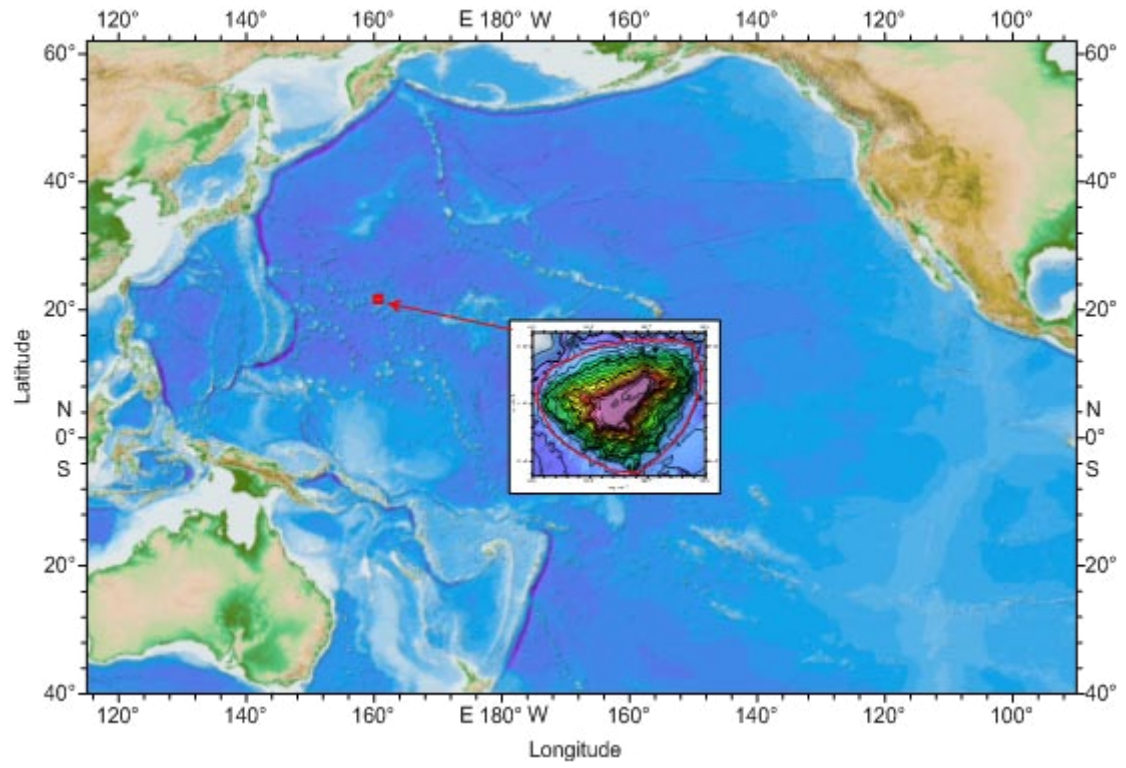


Fig.1 Index map showing the location of the Dacheng Guyot

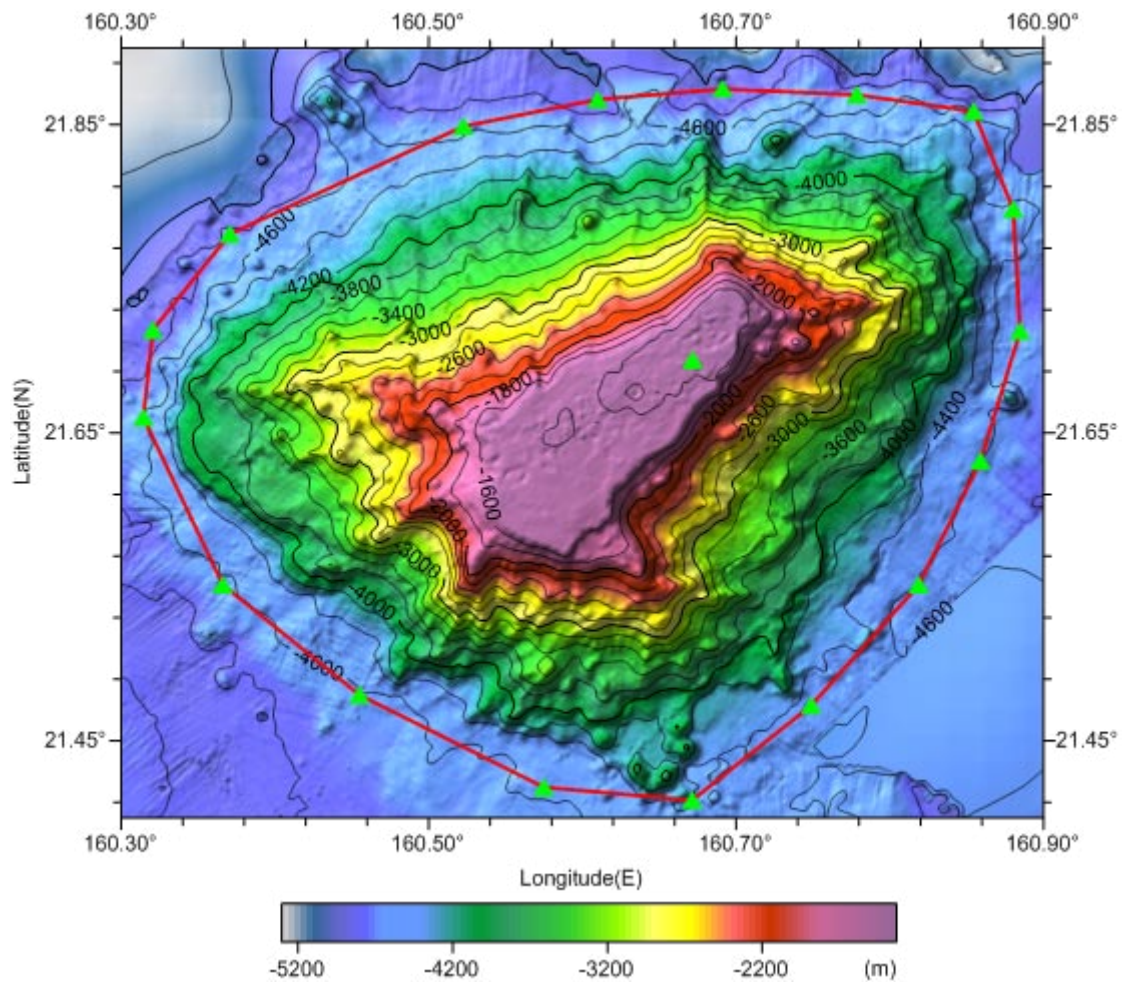


Fig.2 Bathymetric map of the Dacheng Guyot. (Contours are in 200m)

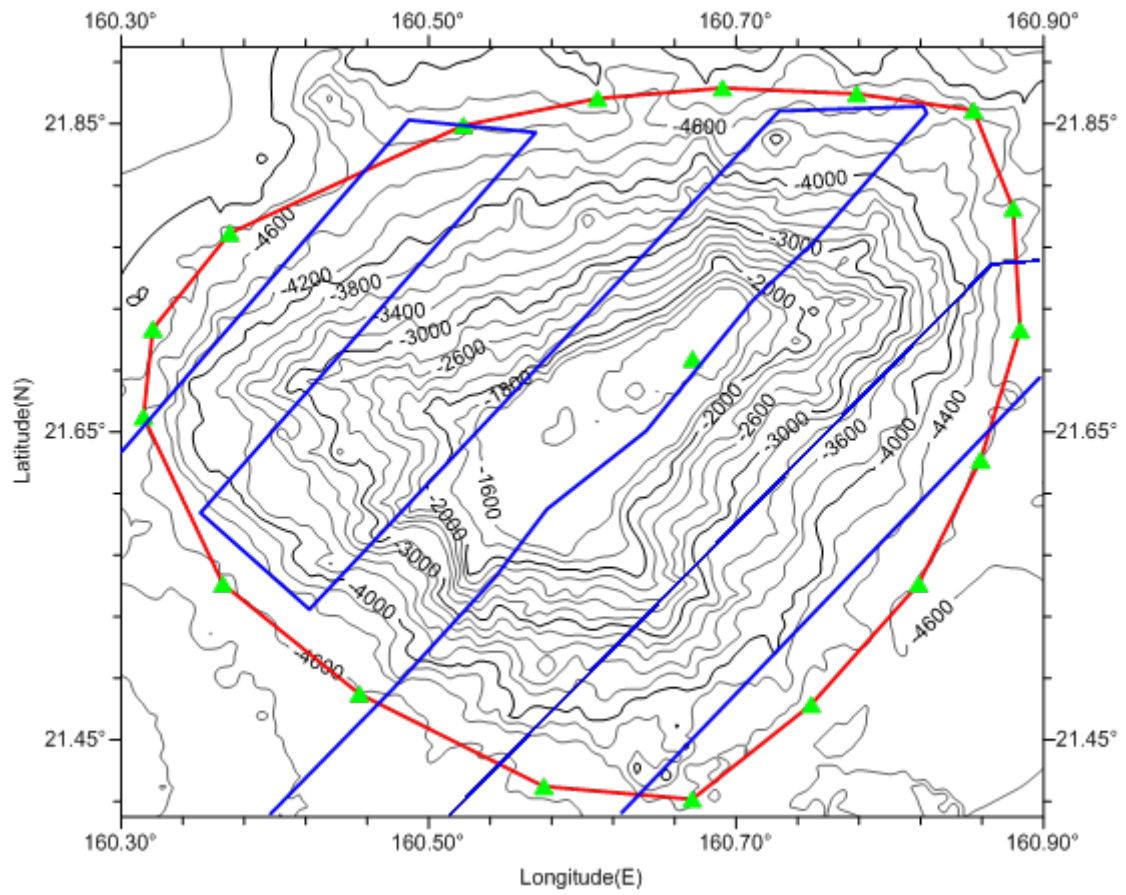


Fig.3 Bathymetric map of the Dacheng Guyot, showing track lines.  
(Contours are in 200m)



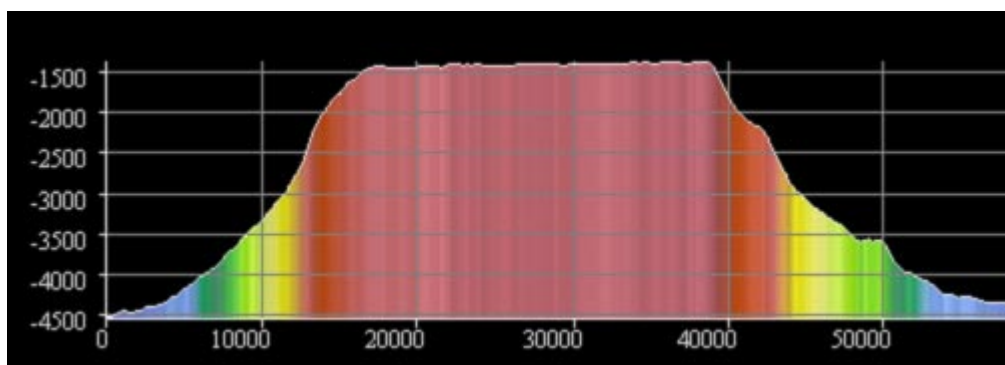
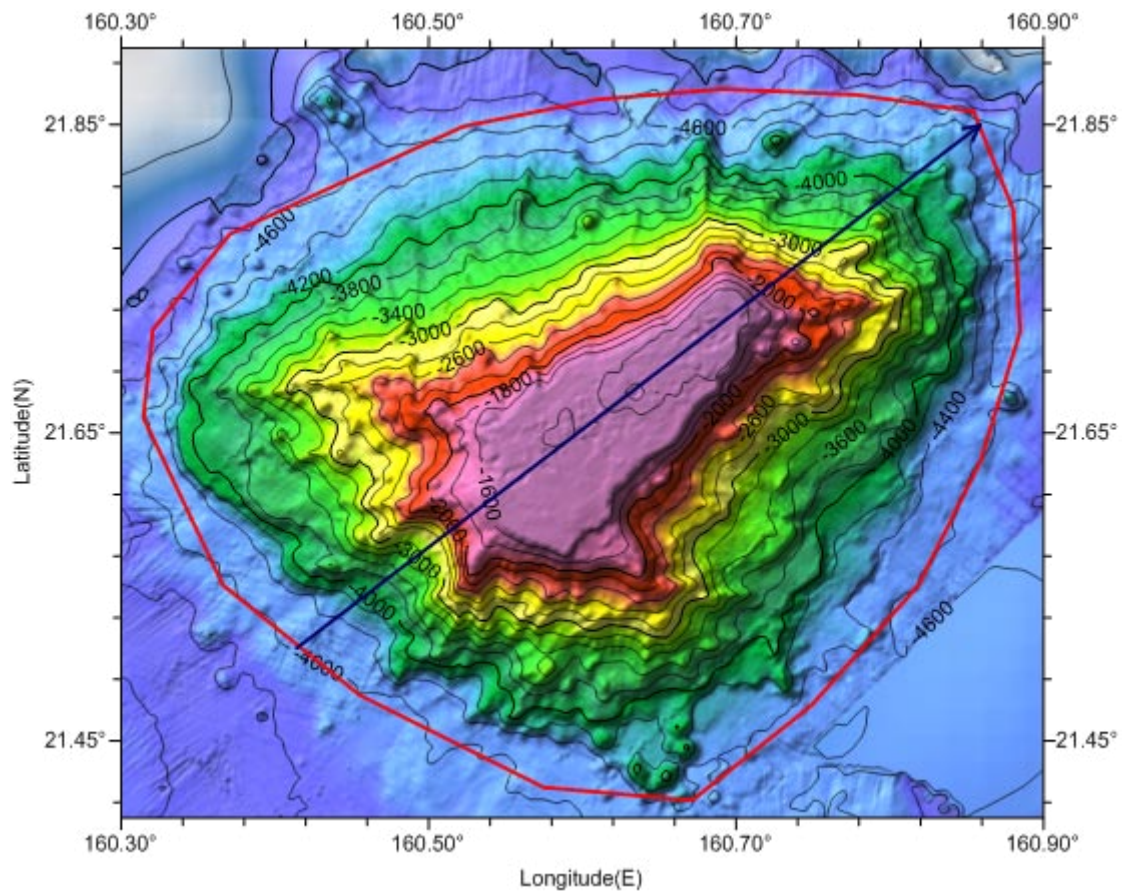


Fig.5 Profile of the Dacheng Guyot