

| | |
|--|---|
| INTERNATIONAL HYDROGRAPHIC ORGANIZATION | INTERGOVERNMENTAL OCEANOGRAPHIC COMMISSION (of UNESCO) |
|--|---|

UNDERSEA FEATURE NAME PROPOSAL

| | | | |
|-----------------------|------------------|----------------------|--------------|
| Name Proposed: | Tianzuo Seamount | Ocean or Sea: | Indian Ocean |
|-----------------------|------------------|----------------------|--------------|

| | | | | | | |
|--|------|---------|-----------------|----------------|-------------------|---------------------------|
| Geometry that best defines the feature (Yes/No): | | | | | | |
| Point | Line | Polygon | Multiple Points | Multiple Lines | Multiple Polygons | Combination of geometries |
| | | Yes | | | | |

* Geometry should be clearly distinguished when providing the coordinates below.

| | | |
|---------------------|-----------------------|-------------------------|
| | Lat. (e.g. 63°32.6'N) | Long. (e.g. 046°21.3'W) |
| Coordinates: | 27°53.2'S (summit) | 063°27.8'E (summit) |
| | 27°59.9'S (bottom) | 063°12.7'E (bottom) |
| | 27°57.2'S | 063°12.7'E |
| | 27°50.3'S | 063°20.8'E |
| | 27°47.0'S | 063°37.5'E |
| | 27°47.9'S | 063°41.0'E |
| | 27°48.4'S | 063°41.2'E |
| | 27°51.0'S | 063°39.7'E |
| | 27°51.7'S | 063°38.4'E |
| | 27°52.8'S | 063°37.2'E |
| | 27°55.2'S | 063°37.3'E |
| | 27°59.0'S | 063°35.3'E |
| | 28°02.2'S | 063°29.4'E |
| | 28°03.4'S | 063°23.2'E |
| 28°02.9'S | 063°21.0'E | |
| 27°59.9'S | 063°12.7'E | |

| | | | | |
|-----------------------------|-----------------|--------|------------------|---------------|
| Feature Description: | Maximum Depth: | 5200 m | Steepness : | |
| | Minimum Depth : | 2550 m | Shape : | |
| | Total Relief : | 2650 m | Dimension/Size : | 48 km × 28 km |

| | |
|-----------------------------|---|
| Associated Features: | This seamount lies in the southwest mid ocean ridge of the Indian Ocean which is oval in shape and extends from west to east. |
|-----------------------------|---|

| | | |
|------------------------------|-----------------------------|------------|
| Chart/Map References: | Shown Named on Map/Chart: | |
| | Shown Unnamed on Map/Chart: | GEBCO 5.09 |
| | Within Area of Map/Chart: | |

| | |
|---|---|
| Reason for Choice of Name (if a person, state how associated with the feature to be named) : | Tianzuo comes from a verse of <i>SHIJING-ZHOUSONG</i> (<i>SHIJING</i> is a collection of ancient Chinese poems from 11 B.C. to 6 B.C.). The verse means that high Mount Qi was built by nature and the king led the nation to explore the mountain. In 2009, Chinese scientists first found polymetallic sulfides associated with ultrabasic rocks at this seamount, which is a great breakthrough in Chinese ocean exploration. This seamount is named Tianzuo to commemorate this discovery. |
|---|---|

| | | |
|-------------------------|-----------------|-----------|
| Discovery Facts: | Discovery Date: | Feb. 2009 |
|-------------------------|-----------------|-----------|

| | | |
|--|--------------------------------|------------------|
| | Discoverer (Individual, Ship): | R/V Dayang Yihao |
|--|--------------------------------|------------------|

| | | |
|--|--|------------------------------------|
| Supporting Survey Data, including Track Controls: | Date of Survey: | Feb. 2009 |
| | Survey Ship: | R/V Dayang Yihao |
| | Sounding Equipment: | Multi-beam sounding system (EM120) |
| | Type of Navigation: | StarFire-2050M WAD DGPS |
| | Estimated Horizontal Accuracy (nm): | <=0.0054 nm |
| | Survey Track Spacing: | 5 nm |
| | Supporting material can be submitted as Annex in analog or digital form. See Attachments | |

| | | |
|---------------------|---------------------------|--|
| Proposer(s): | Name(s): | Zhanhai ZHANG |
| | Date: | 22 Aug. 2013 |
| | E-mail: | heyunxu@sina.com |
| | Organization and address: | Sub Committee on Undersea Feature Names of China Committee on Geographical Names No.1 Fuxingmenwai Ave. Beijing |

| | |
|-----------------|--|
| Remarks: | |
|-----------------|--|

Attachments:

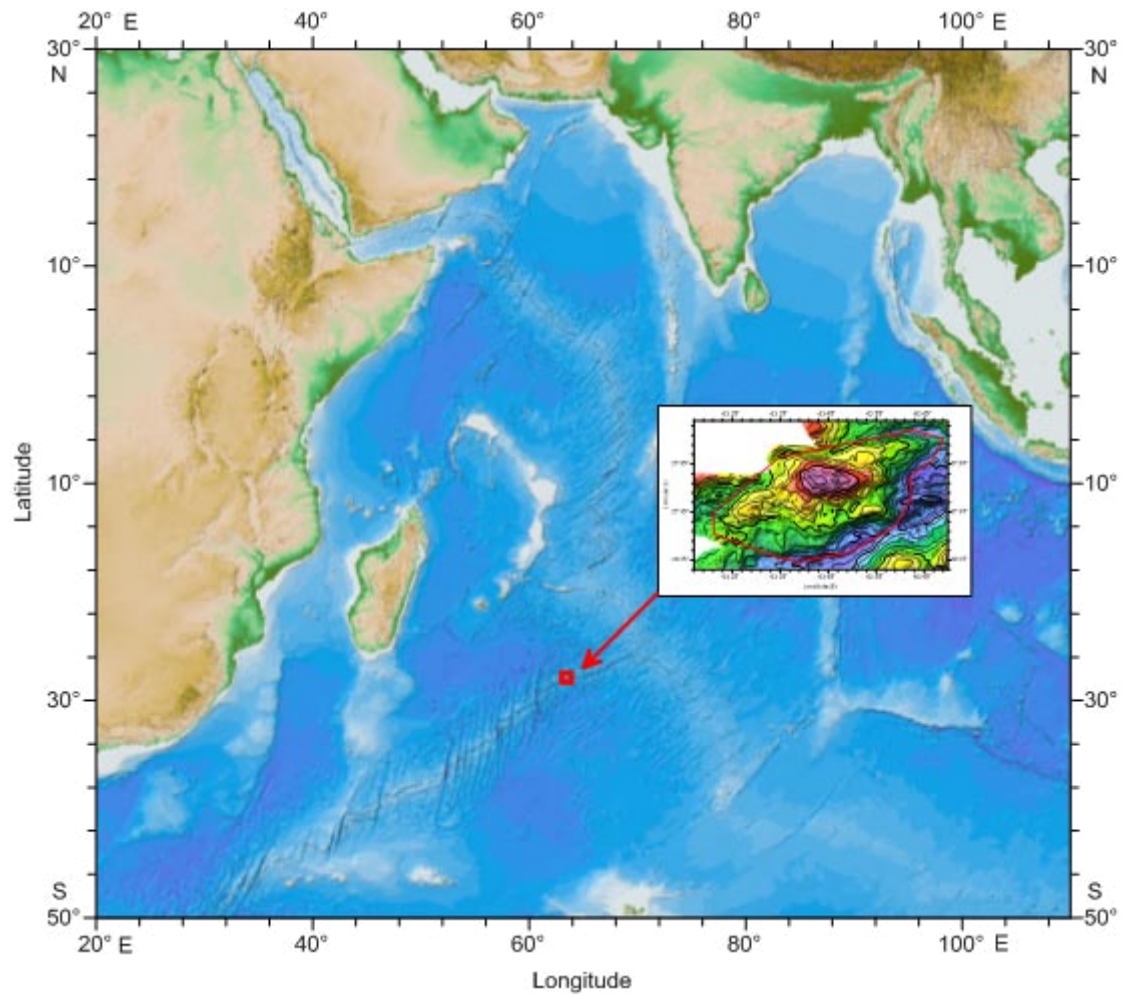


Fig.1 Index map showing the location of the Tianzuo Seamount

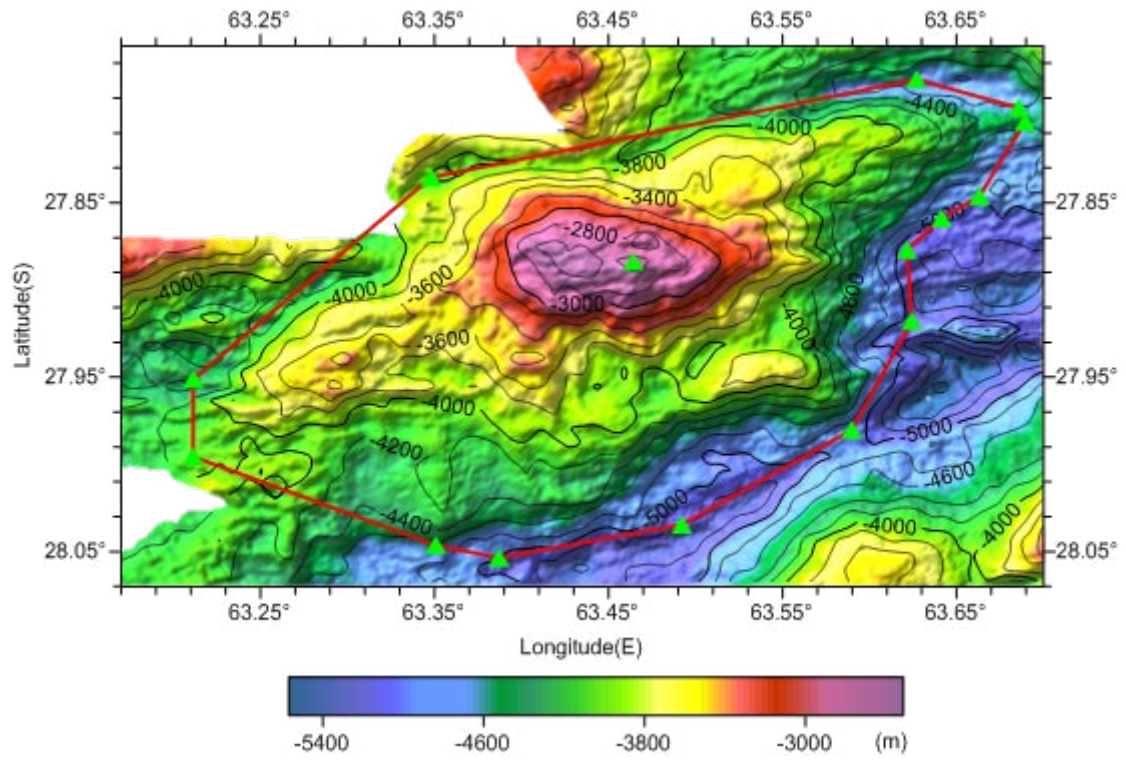


Fig.2 Bathymetric map of the Tianzuo Seamount (Contours are in 200 m)

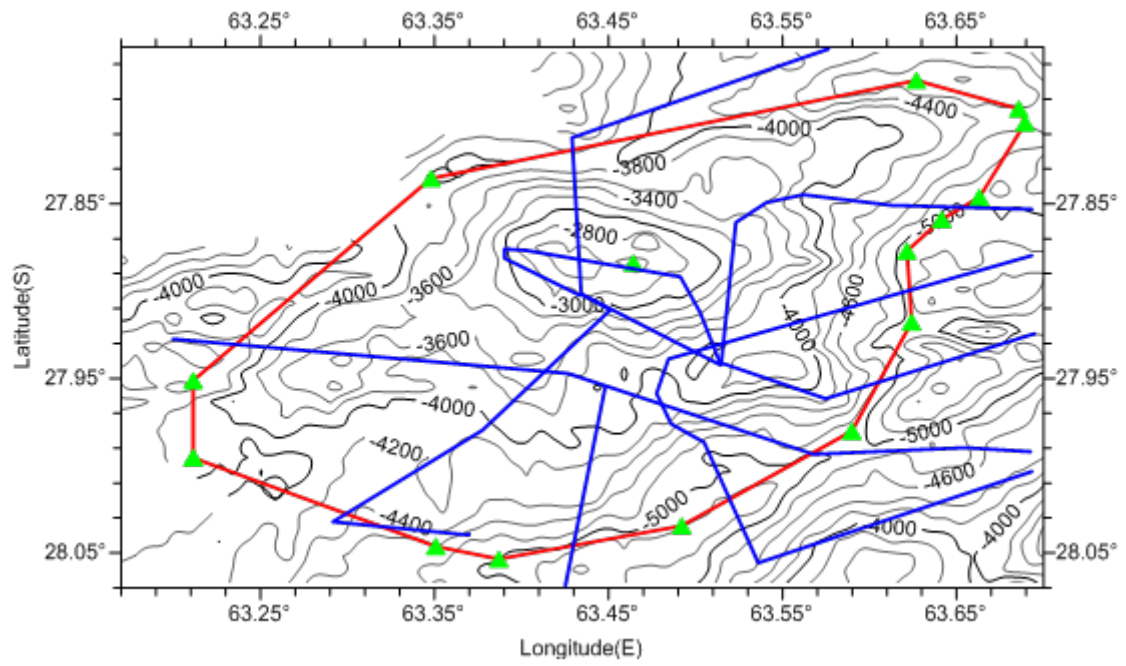


Fig.3 Bathymetric map of the Tianzuo Seamount, showing track lines.
(Contours are in 200 m)

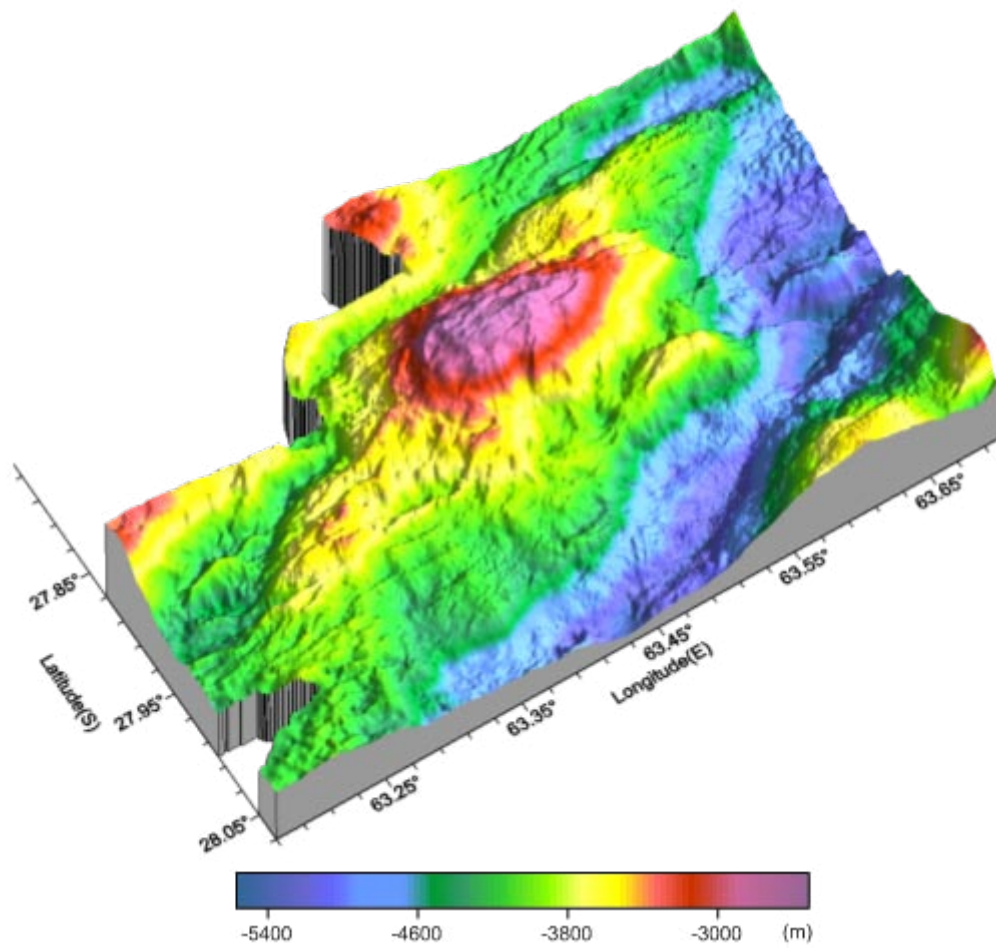


Fig.4 3-D bathymetric map of the Tianzuo Seamount

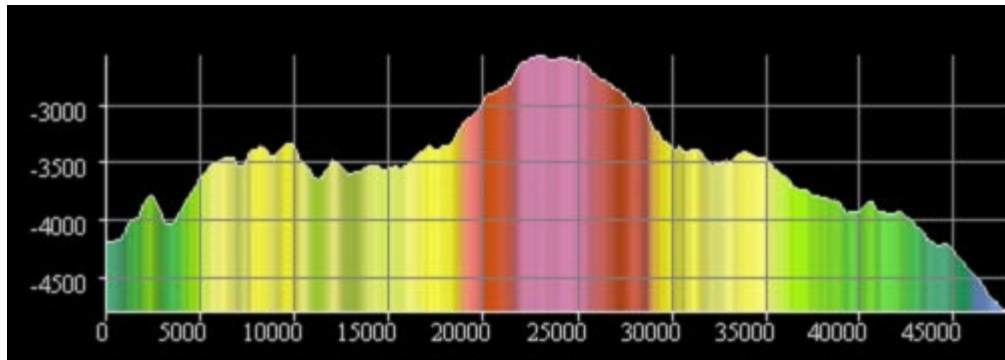
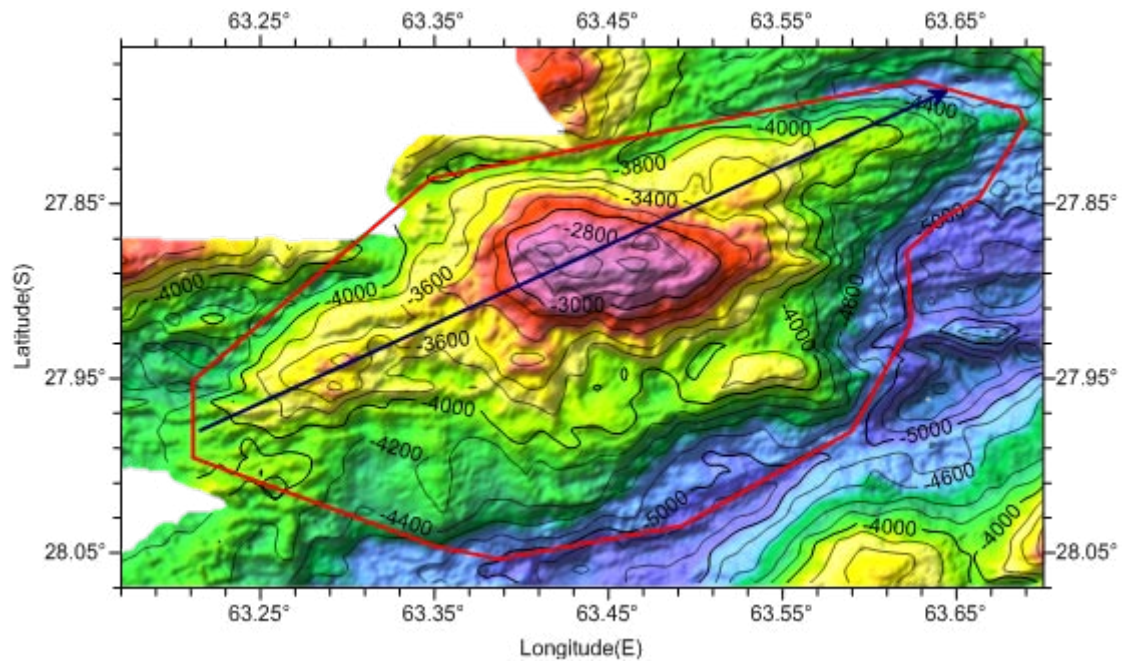


Fig.5 Profile of the Tianzuo Seamount