

**UNDERSEA FEATURE NAME PROPOSAL**

(Sea NOTE overleaf)

Note: The boxes will expand as you fill the form.

<b>Name Proposed:</b>	<b>Dolgorae Hills</b>	<b>Ocean or Sea:</b>	<b>Southern Ocean(Antarctic)</b>
-----------------------	-----------------------	----------------------	----------------------------------

<b>Geometry</b> that best defines the feature (Yes/No) :						
Point	Line	Polygon	Multiple points	Multiple lines*	Multiple polygons*	Combination of geometries*
<b>Yes (primary)</b>		<b>Yes (secondary)</b>				

\* Geometry should be clearly distinguished when providing the coordinates below.

		<b>Lat.</b>	<b>Long.</b>
<b>Centroid Coordinates:</b>	(A)	<b>70°37.3'S</b>	<b>173°6.0'E</b>
	(B)	<b>70°38.6'S</b>	<b>173°5.7'E</b>
<b>Polygon Coordinates: (Range)</b>		<b>70°36.6'S</b>	<b>173°5.9'E</b>
		<b>70°37.1'S</b>	<b>173°7.0'E</b>
		<b>70°37.8'S</b>	<b>173°7.0'E</b>
		<b>70°38.2'S</b>	<b>173°6.5'E</b>
		<b>70°38.5'S</b>	<b>173°7.1'E</b>
		<b>70°38.8'S</b>	<b>173°6.8'E</b>
		<b>70°39.3'S</b>	<b>173°6.6'E</b>
		<b>70°39.0'S</b>	<b>173°5.2'E</b>
		<b>70°38.6'S</b>	<b>173°4.7'E</b>
		<b>70°38.0'S</b>	<b>173°5.4'E</b>
		<b>70°37.9'S</b>	<b>173°5.6'E</b>
		<b>70°37.5'S</b>	<b>173°5.5'E</b>
		<b>70°37.4'S</b>	<b>173°4.5'E</b>
	<b>70°37.0'S</b>	<b>173°5.6'E</b>	
	<b>70°36.6'S</b>	<b>173°5.9'E</b>	

<b>Feature Description:</b>	Maximum Depth:	<b>2,450 m</b>	Steepness :	<b>17.4°~28.1°</b>
	Minimum Depth :	<b>2,150 m</b>	Shape :	<b>Dolphin shape with 2 peaks</b>
	Total Relief :	<b>300 m</b>	Dimension/Size :	<b>4.2 km x 1.5 km</b>

<b>Associated Features:</b>	<b>Jang Bogo Antarctic Research Station &amp; East Adare Ridge</b>
-----------------------------	--

<b>Chart/Map References:</b>	Shown Named on Map/Chart:	
	Shown Unnamed on Map/Chart:	
	Within Area of Map/Chart:	

<b>Reason for Choice of Name</b> (if a person, state how associated with the feature to be named):	<b>Dolgorae is the Korean word for “dolphin”. The shape of Dolgorae Hills is similar to that of a dolphin.</b>
--	--

<b>Discovery Facts:</b>	Discovery Date:	<b>February 15, 2011</b>
	Discoverer (Individual, Ship):	<b>R/V Araon</b>

<b>Supporting Survey Data, including Track Controls:</b>	Date of Survey:	<b>February 15, 2011</b>
	Survey Ship:	<b>R/V Araon</b>
	Sounding Equipment:	<b>MBES Simrad EM 122</b>
	Type of Navigation:	<b>DGPS (C-NAV 3050)</b>
	Estimated Horizontal Accuracy (nm):	<b>+/-0.000054 nm</b>
	Survey Track Spacing:	<b>-</b>
	Supporting material can be submitted as Annex in analog or digital form.	

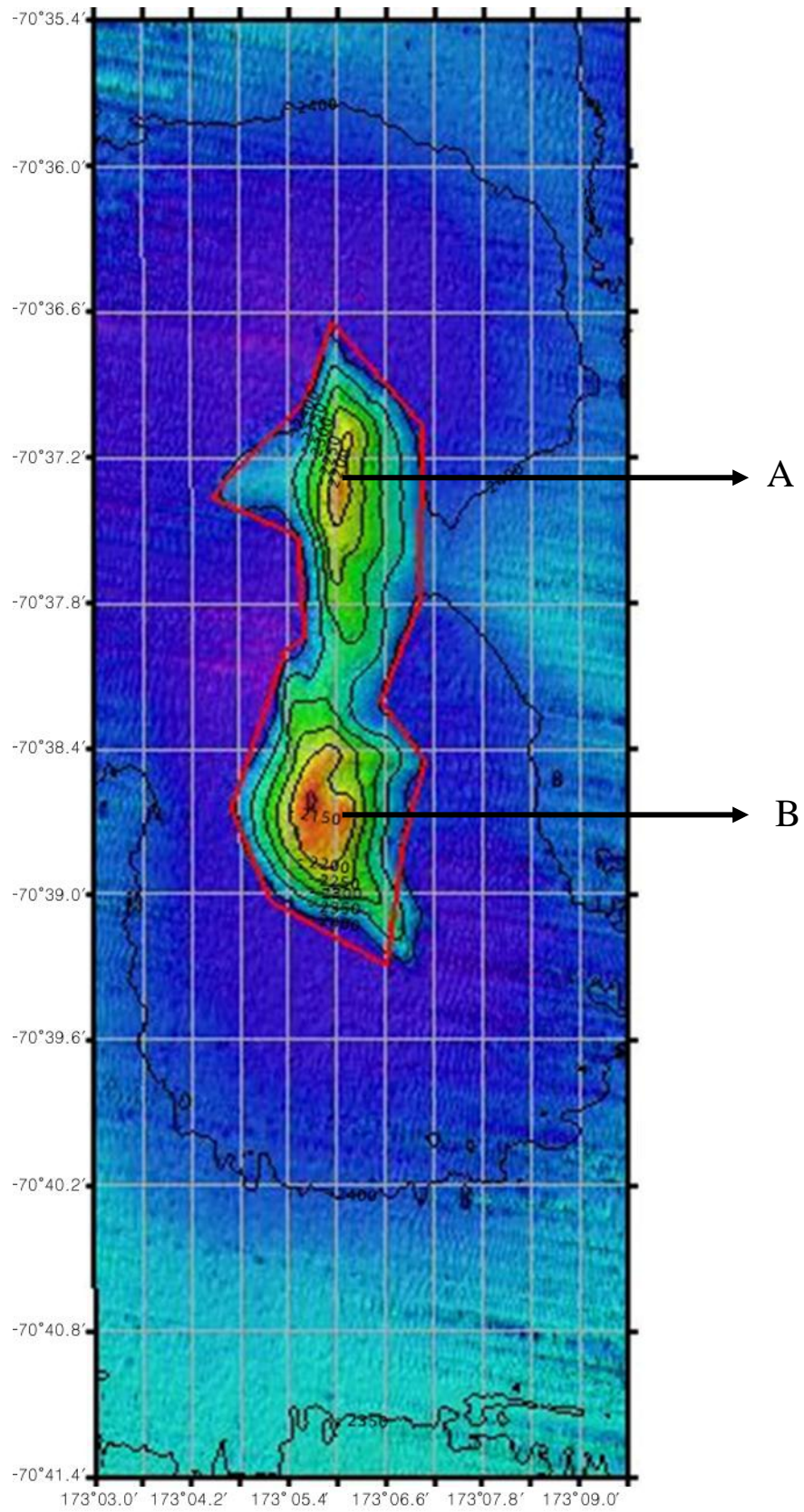
<b>Proposer(s):</b>	Name(s):	<b>Korea Committee on Geographical Names (KCGN), Republic of Korea</b>
	Date:	<b>August 22, 2013</b>
	E-mail:	<b>infokhoa@korea.kr</b>
	Organization and Address:	<b>351, Haeyang-ro, Yeongdo-gu, Busan, Republic of Korea</b>
	Concurrer (name, e-mail, organization and address):	

<b>Remarks:</b>	
-----------------	--

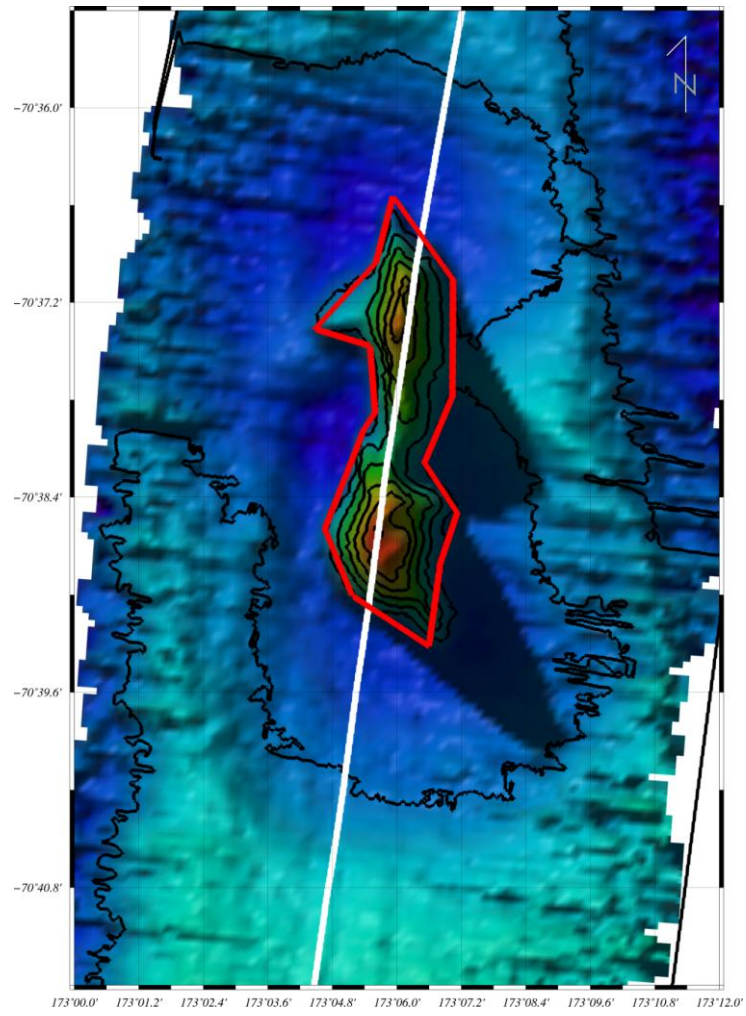
**NOTE :** This form should be forwarded, when completed :

- a) **If the undersea feature is located inside the external limit of the territorial sea:-**  
to your "National Authority for Approval of Undersea Feature Names" (see page 2-9) or, if this does not exist or is not known, either to the IHB or to the IOC (see addresses below);
- b) **If at least 50 % of the undersea feature is located outside the external limits of the territorial sea :-**  
to the IHB or to the IOC, at the following addresses :

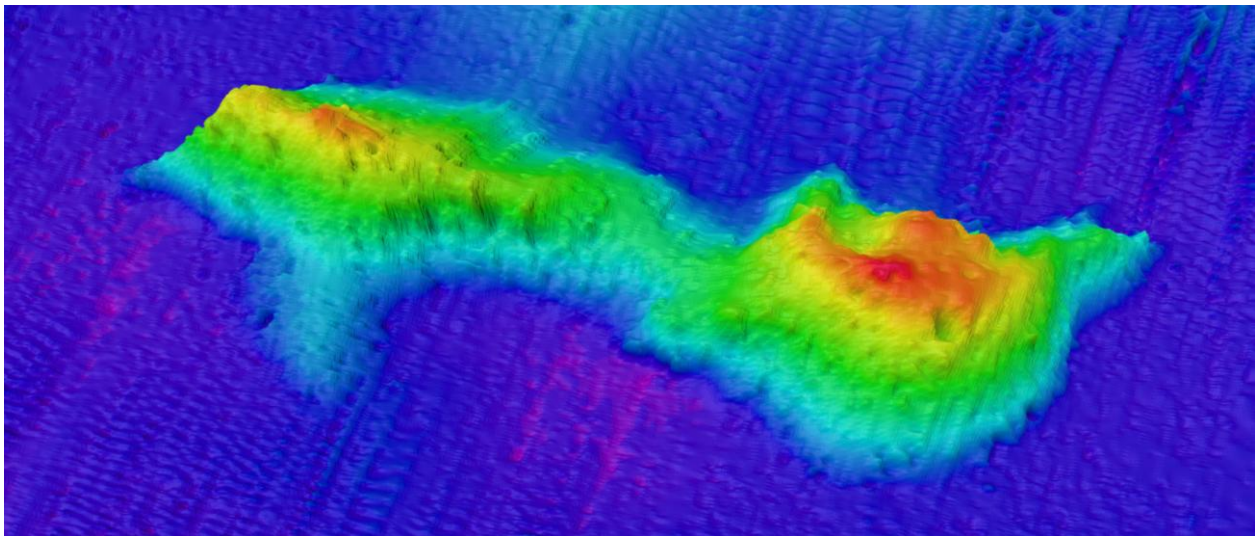
International Hydrographic Bureau (IHB) 4, Quai Antoine 1er B.P. 445 MC 98011 MONACO CEDEX Principality of MONACO Fax: +377 93 10 81 40 E-mail: <a href="mailto:info@ihb.mc">info@ihb.mc</a>	Intergovernmental Oceanographic Commission (IOC) UNESCO Place de Fontenoy 75700 PARIS France Fax: +33 1 45 68 58 12 E-mail: <a href="mailto:info@unesco.org">info@unesco.org</a>
--	--



**Fig. 1. 2-D Bathymetric contour map.**



**Fig. 2.** Track lines in the survey area.



**Fig. 3.** 3-D Topographic map of Dolgorae Hills

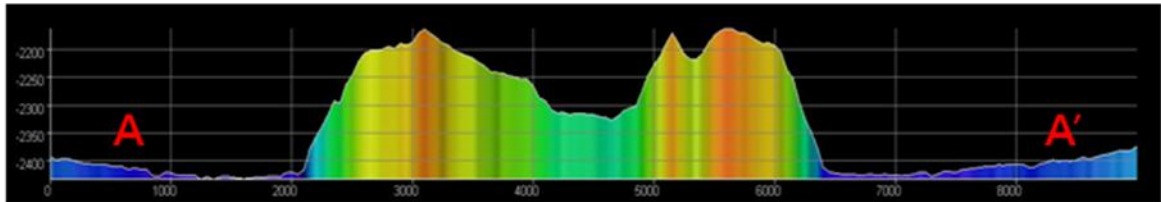
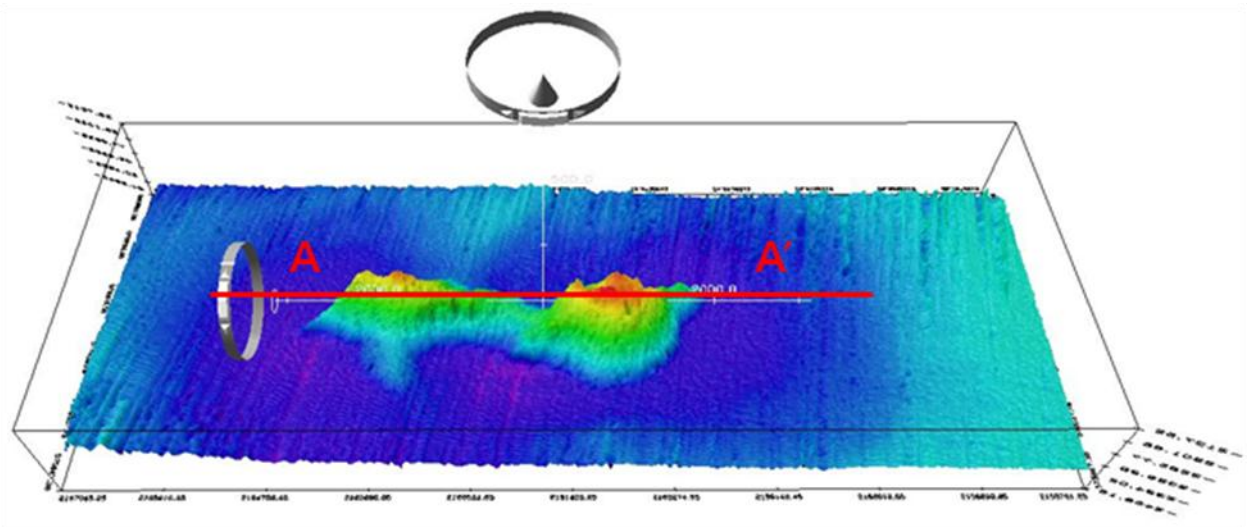


Fig.4. Profile across the center of Dolgorae Hills