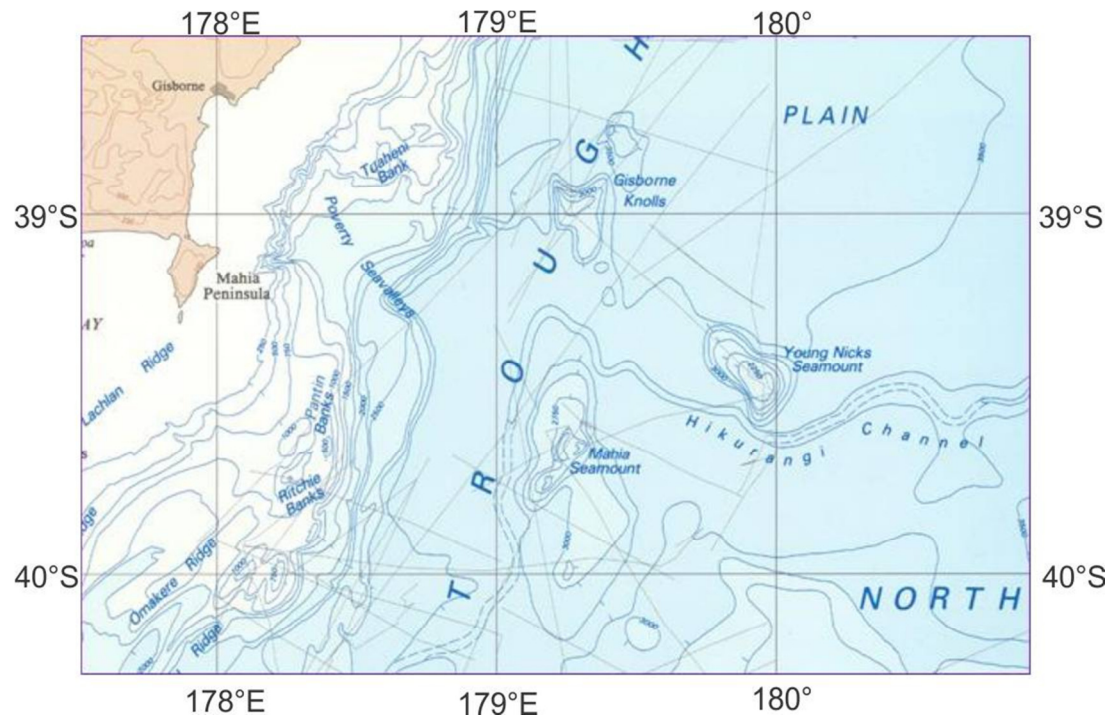


**Māhia Seamount** altered from Mahia Seamount

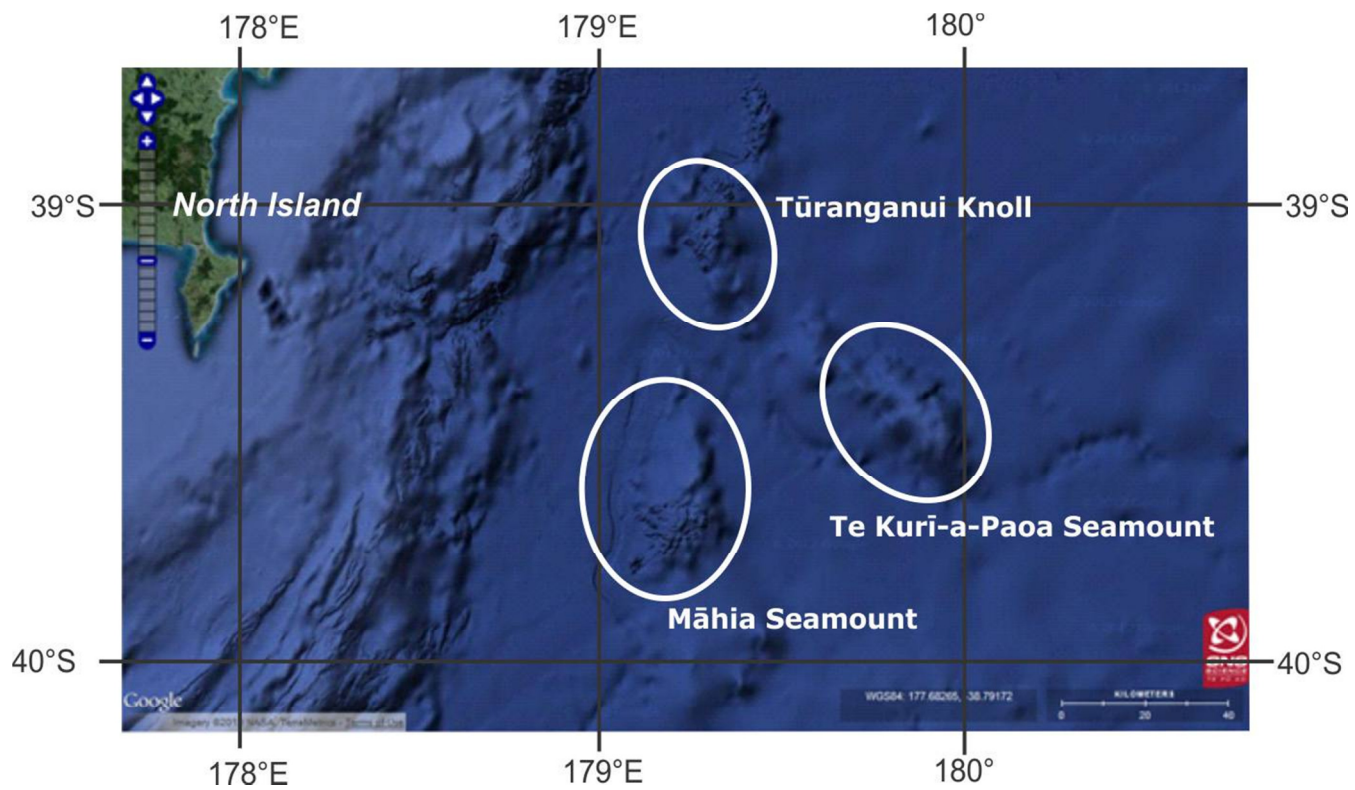
**Tūranganui Knoll** altered from Gisborne Knoll

**Te Kuri-a-Paoa Seamount** altered from Young Nicks Seamount

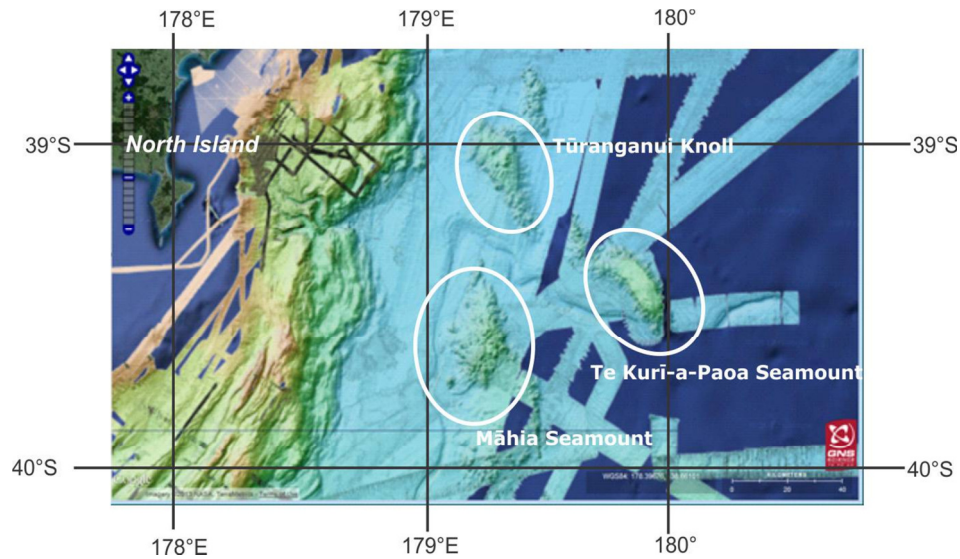


**Cook Chart**© (Baldwin & Lewis, 1991) - **insert**

**Google Earth view**



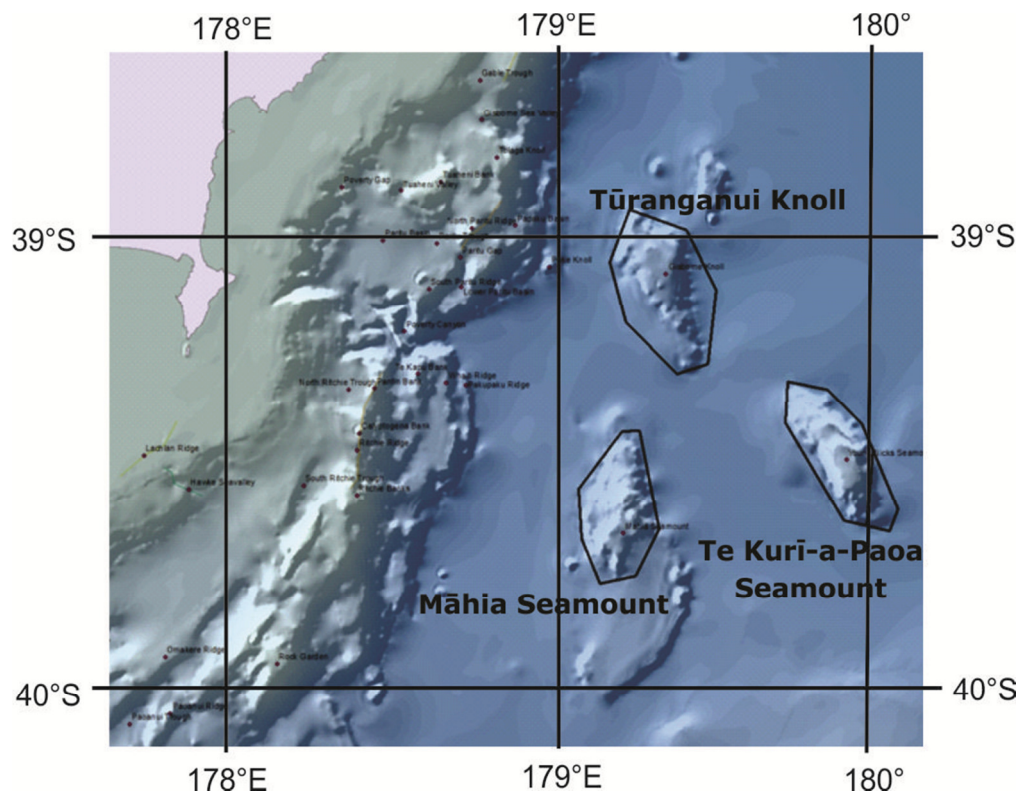
## Full swath coverage EM302



## Research swath coverage

Survey	Alternative survey name	Research program	Vessel	Principle scientist	Institution	Start Date	End Date	Bathymetry instrumentation	Navigation instrumentation	Port start-end	URL Link	Report	Data Custodian
TAN1114	Northern Hikurangi Margin Geohazards	OS2020	R/V Tangaroa	Philip Barnes	NIWA, GNS Science	2011-10-03T11:00:00.029Z	2011-10-18T11:00:00.029Z	Simrad EM302	D-GPS	Wellington New Zealand, Wellington New Zealand		I:\Section_530\Cruise reports\TAN1114\Tan1114_voyage_Report_2011.pdf	GNS Science
TAN0413		Bay of Plenty and Hikurangi Plateau Seamounts	R/V Tangaroa	M Clark	NIWA	2004-11-05T11:00:00.045Z	2004-11-21T11:00:00.045Z	Simrad EM300 30kHz multibeam	FURUNO GP 50 DGPS	Napier to Wellington			NIWA
TAN0106		Poverty Bay Seamount Re-	R/V Tangaroa	K Lewis	NIWA	2001-05-03T12:00:00.247Z	2001-05-16T12:00:00.247Z	Simrad EM300	FURUNO GP 50 DGPS	Wellington to Tauranga			NIWA
TAN0207		UNCLOS Eastern Region	R/V Tangaroa	J Mitchell	NIWA, GNS	2002-05-18T12:00:00.263Z	2002-06-17T12:00:00.263Z	Simrad EM300	DUAL RACAL SKYFIX DGPS	Wellington to Wellington			NIWA
GEODYNZ	GEODYNZ SUD legs 1 & 2	UNCLOS	R/V L'Atalante	Jean Collet, Jean Delteil, Ray Wood, Rick Herzer, Bryan Davy,	Universite de Nice, GeoAzur, GNS Science	1993-11-20T11:00:00.450Z	1993-11-17T11:00:00.450Z	Simrad EM12Dual		Auckland New Zealand to Wellington New Zealand to Wellington New Zealand	<a href="http://www.ifremer.fr/sism/er/UK/catalogue/campagne/campagne.html?cno=9300">http://www.ifremer.fr/sism/er/UK/catalogue/campagne/campagne.html?cno=9300</a>		GNS Science
NBP9704	NBP97-4		Nathaniel B. Palmer	Dave Leger	RPSC	1997-05-14T12:00:00.450Z	1997-05-19T12:00:00.450Z	SeaBeam 2112	GPS	Lyttelton New Zealand to Auckland New Zealand	<a href="http://www.marine-geo.org/tools/search/entry.php?id=NBP9704">http://www.marine-geo.org/tools/search/entry.php?id=NBP9704</a>	\sp\prj\mb_data\NBP9704\reports	GNS Science
NBP9806A	NBP98-6A		Nathaniel B. Palmer	Dave Leger	RPSC	1998-10-02T12:00:00.466Z	1998-10-12T11:00:00.466Z	SeaBeam 2112	P-code GPS	Honolulu Hawaii to Apia Western Samoa	<a href="http://www.marine-geo.org/tools/search/entry.php?id=NBP9806A">http://www.marine-geo.org/tools/search/entry.php?id=NBP9806A</a>	\sp\prj\mb_data\NBP9806A\reports	GNS Science
COOK18MV			R/V Melville	Woody Sutherland	SIO	2002-01-03T11:00:00.466Z	2002-01-12T11:00:00.466Z	SeaBeam 2000	Tasman GPS	Papeete Tahiti to Lyttelton New Zealand	<a href="http://www.marine-geo.org/tools/search/entry.php?id=COOK18MV">http://www.marine-geo.org/tools/search/entry.php?id=COOK18MV</a>	\sp\prj\mb_data\Scripps\Cook18MV\reports	GNS Science
SO169	CAMP		R/V Sonne	Karsten Gohl	Alfred Wegener Institute	2003-01-17T11:00:00.497Z	2003-02-22T11:00:00.497Z	Simrad EM120	Ashtech D-GPS	Lyttelton New Zealand to Auckland New Zealand	<a href="http://doi.pangaea.de/10.1594/PANGAEA.770019">http://doi.pangaea.de/10.1594/PANGAEA.770019</a>	\sp\prj\mb_data\SO169\reports	GNS Science
SO168	ZEALANDIA		R/V Sonne	Kaj Hoernle	Geomar	2002-12-01T11:00:00.528Z	2003-01-15T11:00:00.528Z	Simrad EM120	Ashtech D-GPS	Wellington New Zealand to Sydney Australia to Christchurch New Zealand	<a href="http://www.pangaea.de/PHP/CruiseReports.php?b=Sonne">http://www.pangaea.de/PHP/CruiseReports.php?b=Sonne</a>	\sp\prj\mb_data\SO168\reports	GNS Science

### Extent of polygons



### Profiles



