

**UNDERSEA FEATURE NAME PROPOSAL**

(Sea NOTE overleaf)

Note: The boxes will expand as you fill the form.

<b>Name Proposed:</b>	Chuci Seamount	<b>Ocean or Sea:</b>	East Pacific Ocean
-----------------------	----------------	----------------------	--------------------

<b>Geometry</b> that best defines the feature (Yes/No) :						
Point	Line	Polygon	Multiple points	Multiple lines*	Multiple polygons*	Combination of geometries*
		Yes				

\* Geometry should be clearly distinguished when providing the coordinates below.

	Lat. (e.g. 63°32.6'N)	Long. (e.g. 046°21.3'W)
<b>Coordinates:</b>	07°49.2'N (summit)	144°31.7'W (summit)
	07°49.0'N (bottom)	144°35.1'W (bottom)
	07°51.7'N	144°33.0'W
	07°52.2'N	144°29.7'W
	07°51.0'N	144°26.4'W
	07°49.1'N	144°26.6'W
	07°48.0'N	144°28.5'W
	07°46.2'N	144°29.9'W
	07°46.5'N	144°33.2'W
	07°49.0'N	144°35.1'W

<b>Feature Description:</b>	Maximum Depth:	5500m	Steepness :	
	Minimum Depth :	3783m	Shape :	
	Total Relief :	1717m	Dimension/Size :	16km × 10km

<b>Associated Features:</b>	This seamount lies in the abyssal plain, its shape is roughly cylindrical and its top is relatively flat.
-----------------------------	-----------------------------------------------------------------------------------------------------------

<b>Chart/Map References:</b>	Shown Named on Map/Chart:	
	Shown Unnamed on Map/Chart:	GEBCO 5.07
	Within Area of Map/Chart:	

<b>Reason for Choice of Name</b> (if a person, state how associated with the feature to be named):	Chuci is from a poem in “Shi Jing Xiao Ya” (an ancient book of poems). “Where in clusters grew the thorn, By the roots they’ve all been torn.” Chuci Seamount is named to praise the hard-working ancient Chinese people.
----------------------------------------------------------------------------------------------------	---------------------------------------------------------------------------------------------------------------------------------------------------------------------------------------------------------------------------

<b>Discovery Facts:</b>	Discovery Date:	Aug. 1995
-------------------------	-----------------	-----------

	Discoverer (Individual, Ship):	R/V Dayang Yihao
--	--------------------------------	------------------

<b>Supporting Survey Data, including Track Controls:</b>	Date of Survey:	Aug. 1995
	Survey Ship:	R/V Dayang Yihao
	Sounding Equipment:	Multi-beam sounding system (Seabeam2112.360)
	Type of Navigation:	Sercel NR51 DGPS
	Estimated Horizontal Accuracy (nm):	<=0.08nm
	Survey Track Spacing:	5nm
Supporting material can be submitted as Annex in analog or digital form.		

<b>Proposer(s):</b>	Name(s):	Haiwen Zhang
	Date:	14 May 2014
	E-mail:	heyunxu@sina.com
	Organization and Address:	Sub Committee on Undersea Feature Names of China Committee on Geographical Names No.1 Fuxingmenwai Ave. Beijing

<b>Remarks:</b>	
-----------------	--



**Attachment**

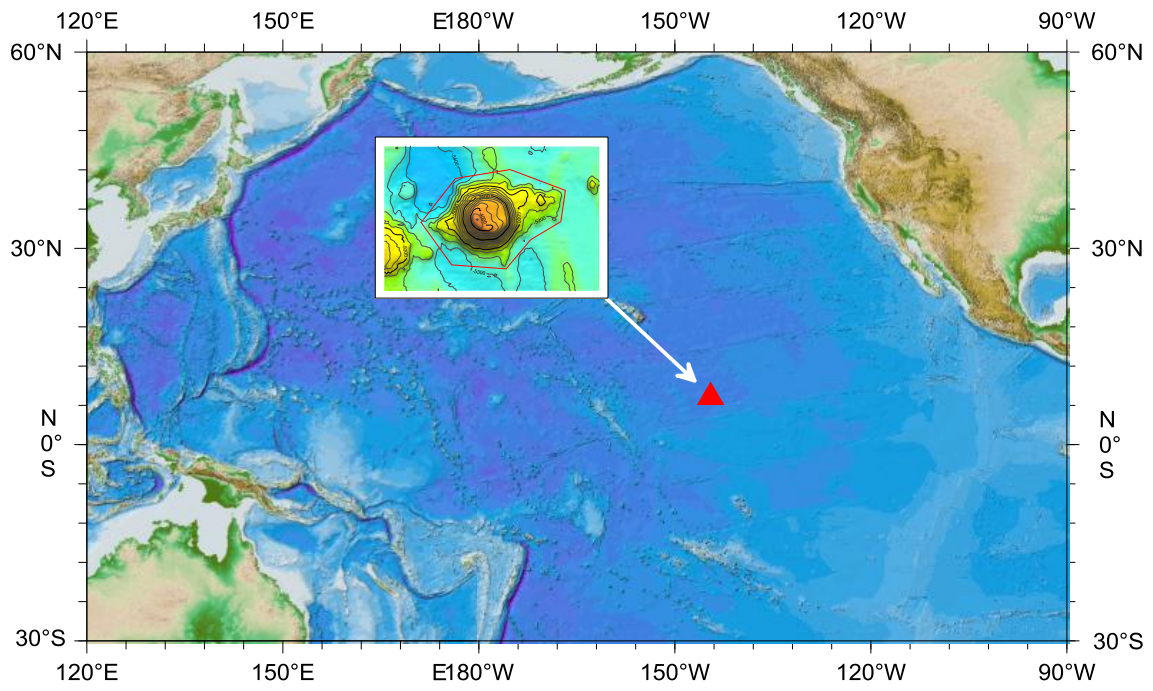


Fig.1 Index map showing the location of the Chuci Seamount.

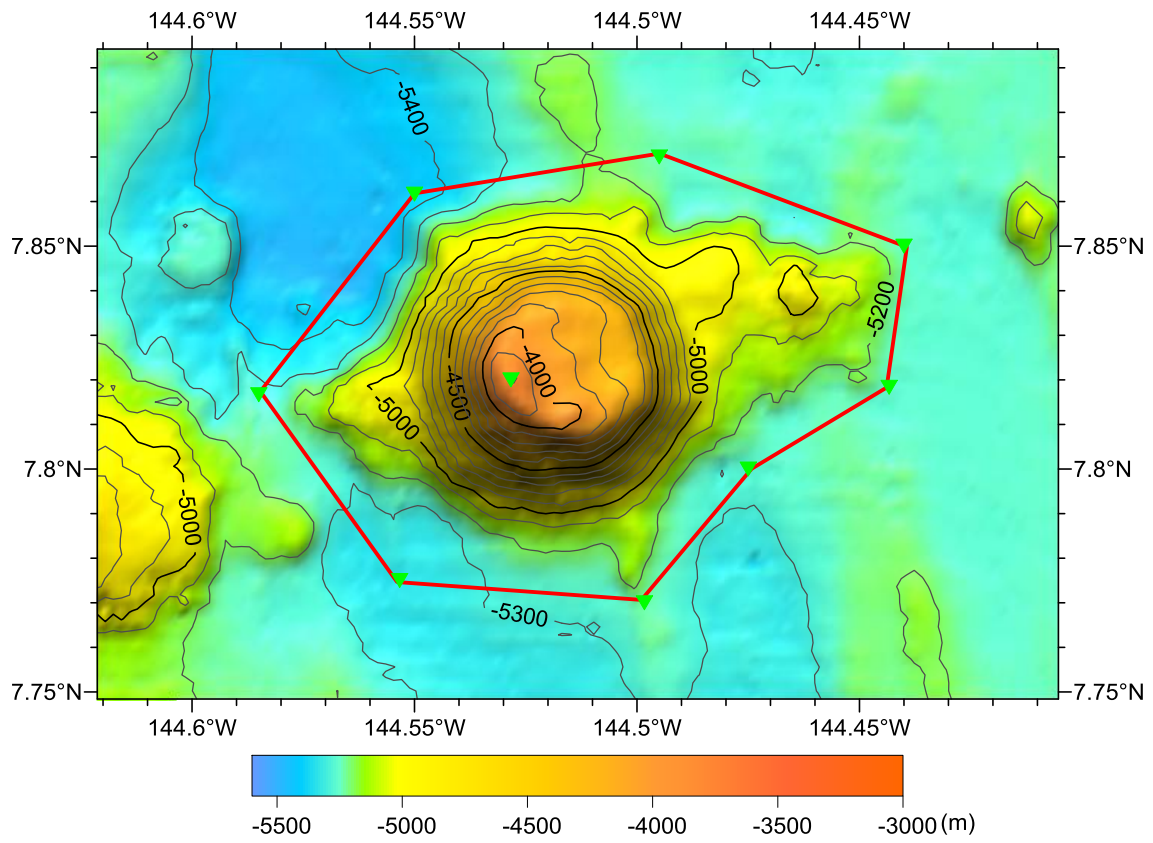


Fig.2 Bathymetric map of the Chuci Seamount. (Contours are in 100 m)

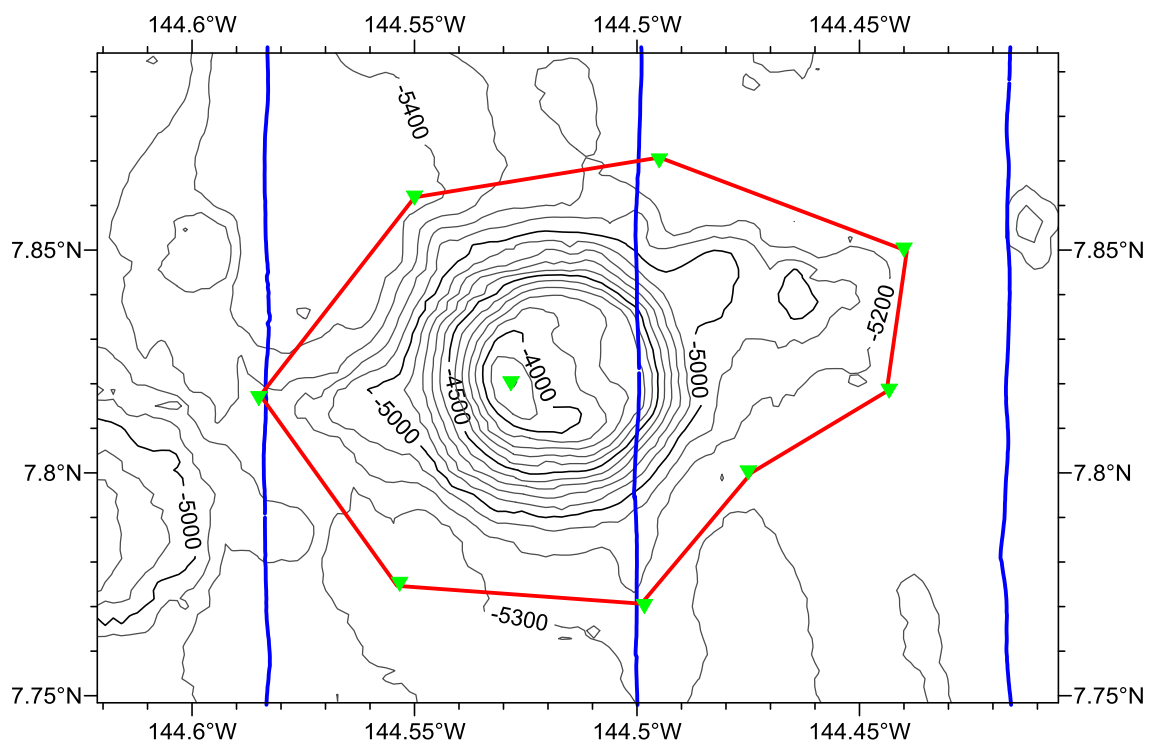


Fig.3 Bathymetric map of the Chuci Seamount, showing track lines.  
(Contours are in 100 m, blue lines for the track lines)

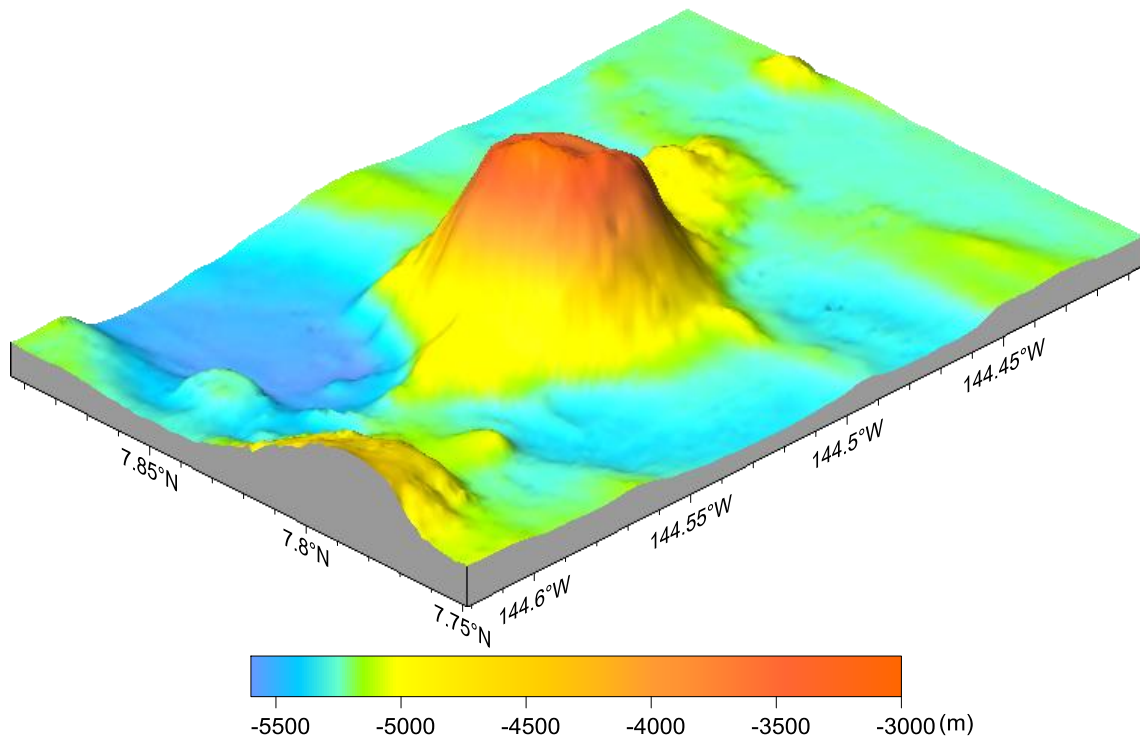


Fig.4 3-D bathymetric map of the Chuci Seamount.

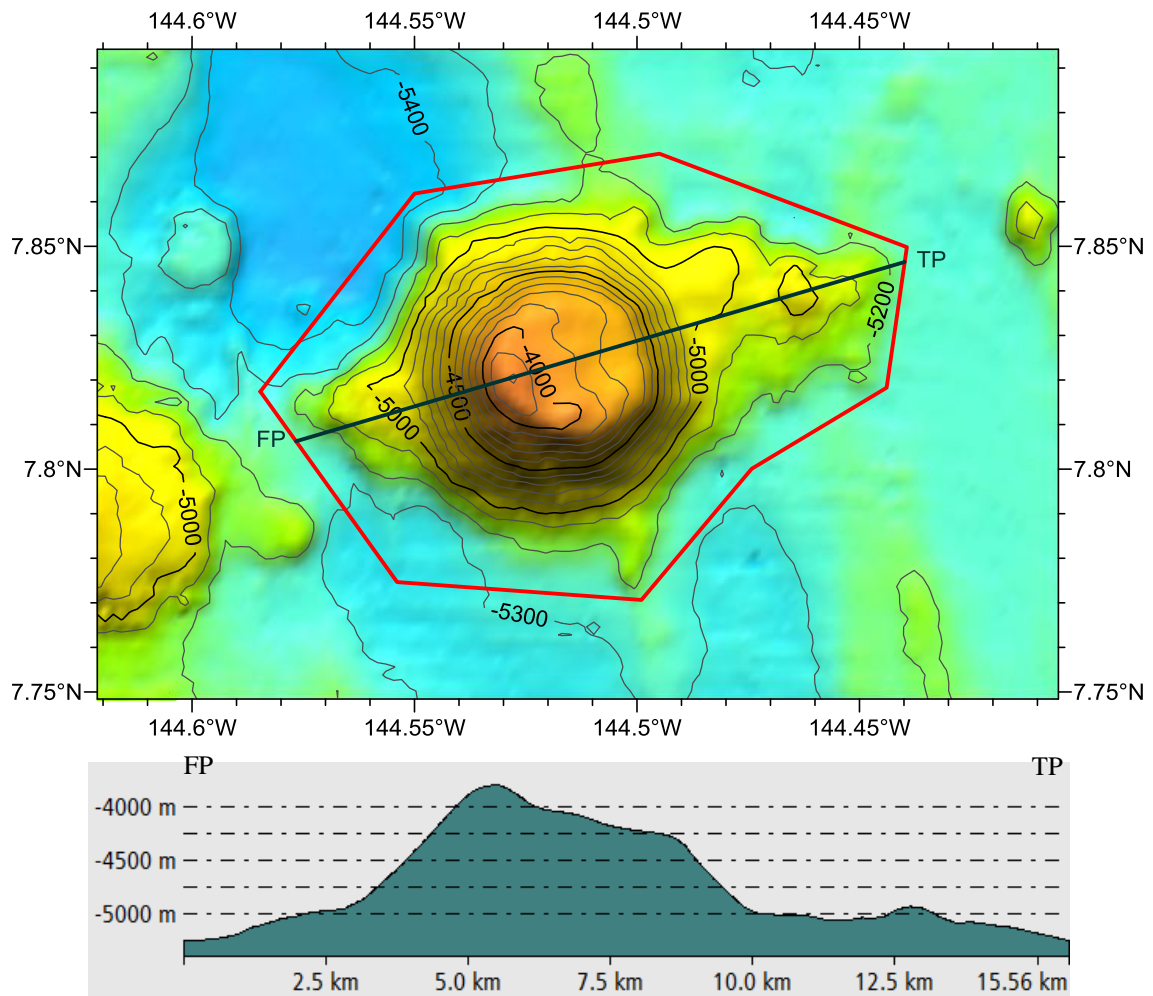


Fig.5 Profile map of the Chuci Seamount.